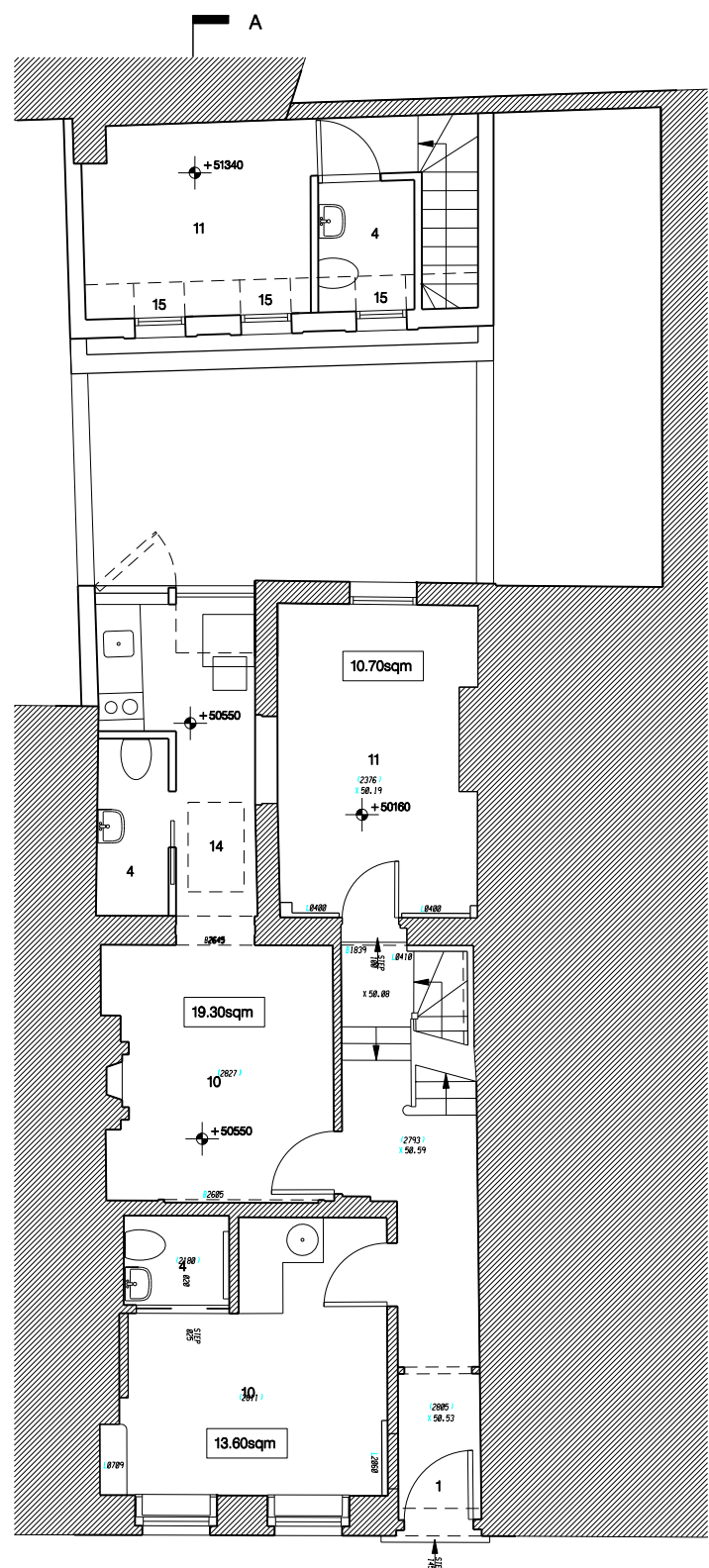

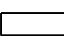


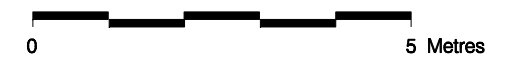
01 PROPOSED LOWER GROUND FLOOR PLAN  
PL110



02 PROPOSED GROUND FLOOR PLAN  
PL110

Notes

-  EXISTING BUILDING FABRIC RETAINED
-  NEW FABRIC



LEGEND

1. Residential Entrance
2. Kitchen
3. Garden / Patio
4. Shower room
5. Utility
6. Bathroom
7. Kitchen-Dinig-Living room
8. Boiler cupboard
9. Street light well
10. Studio
11. Bedroom
12. Storage
13. Underground Drainage to Mains Sewer
14. Skylight
15. Dormer window
16. Corridor
17. Double Sealed Manhole Cover

Revision	Date	Reason	Initial
/	28.03.14	PLANNING	GM

PLANNING

All dimensions must be checked on site and not scaled from this drawing. © Mark Fairhurst Limited

**mark fairhurst ARCHITECTS**  
16 Winchester Walk, London, SE1 9AQ. T 020 7407 7070, E info@mark-fairhurst.co.uk

Project: 9 Leigh Street, London, WC1H Client: Rainbow Properties

Drawing title: PROPOSED LOWER GROUND & GROUND FLOOR PLANS

Scale: 1:100@A3, 1:50@A1 Date: FEB.14 Drawn by: GM

Project number: 1314 Drawing number: PL110

Status: PLANNING

