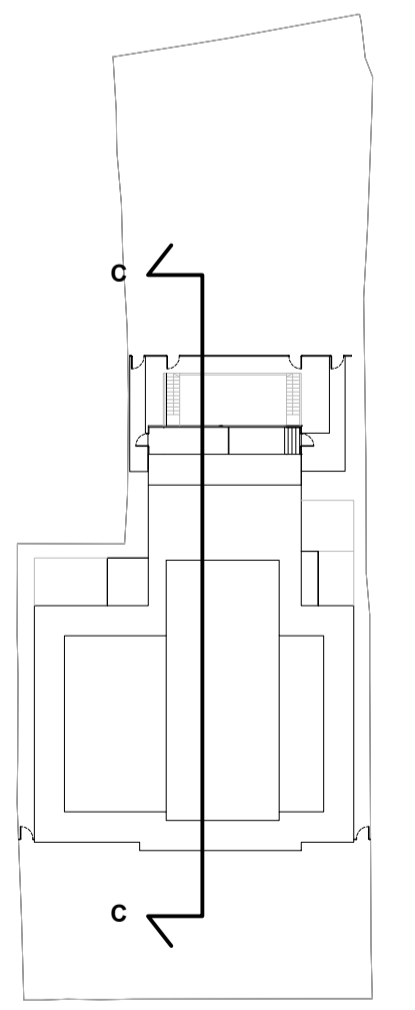
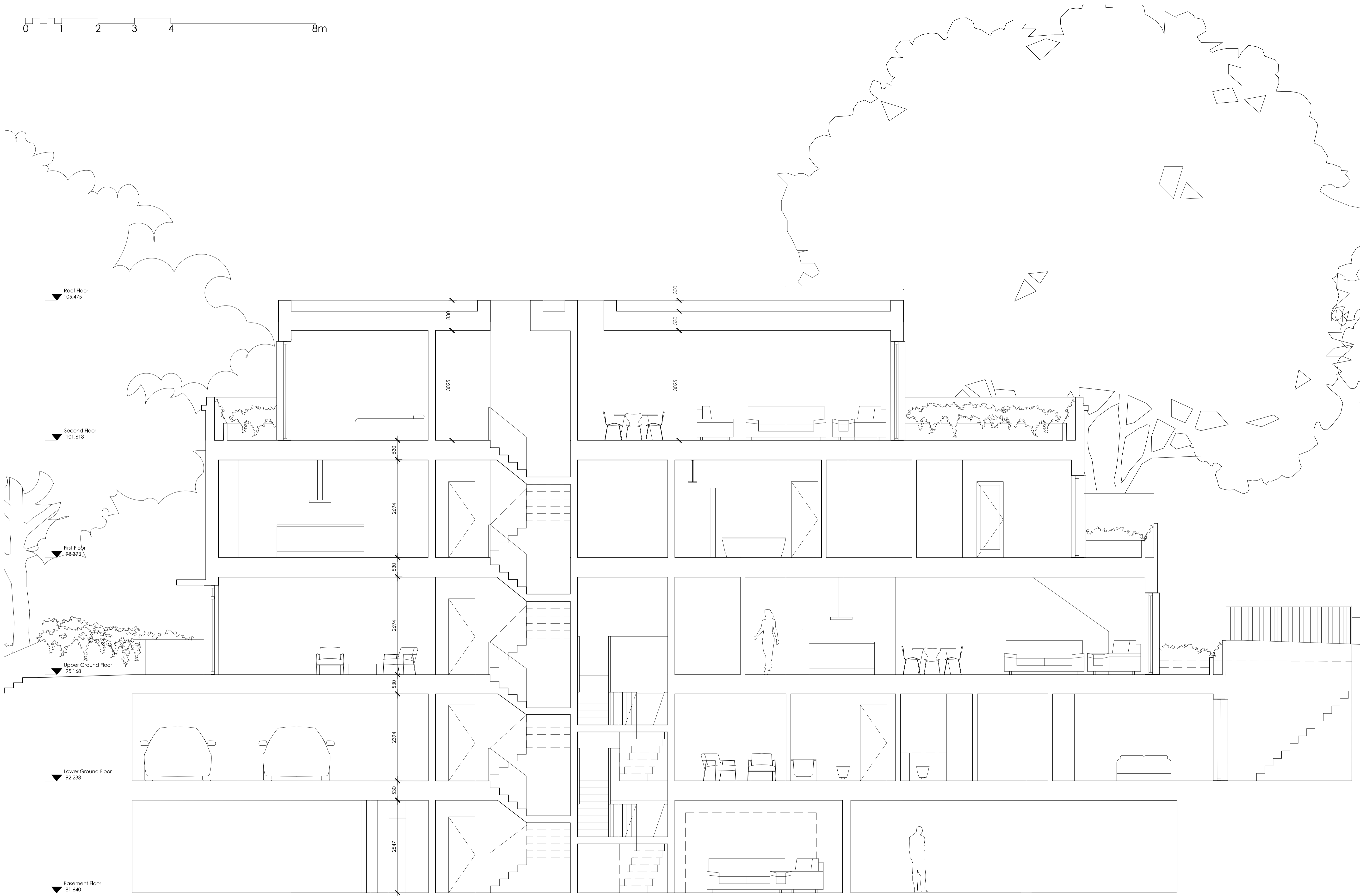


NOTES

PLANNING

REV C 24.02.14. Reduction of window and roof in second floor

REV D 24.03.14. Removal of the swimming-pool in the basement.



Martin Evans Architects
 18 Charlotte Road
 London EC2A 3PB
 tel 020 7729 2474

JOB
 OAKHILL AVENUE
 LONDON
 NW3 7RE

TITLE
 PROPOSED SECTION C-C

DATE	06.02.2014
SCALE	1:50 @ A1
DRAWN	B.A
DRAWING NO.	OHA-PL-PR-12 D