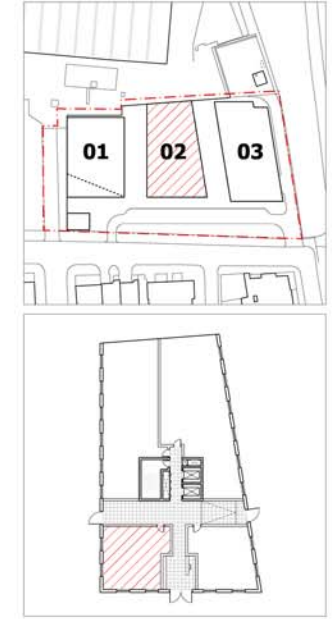
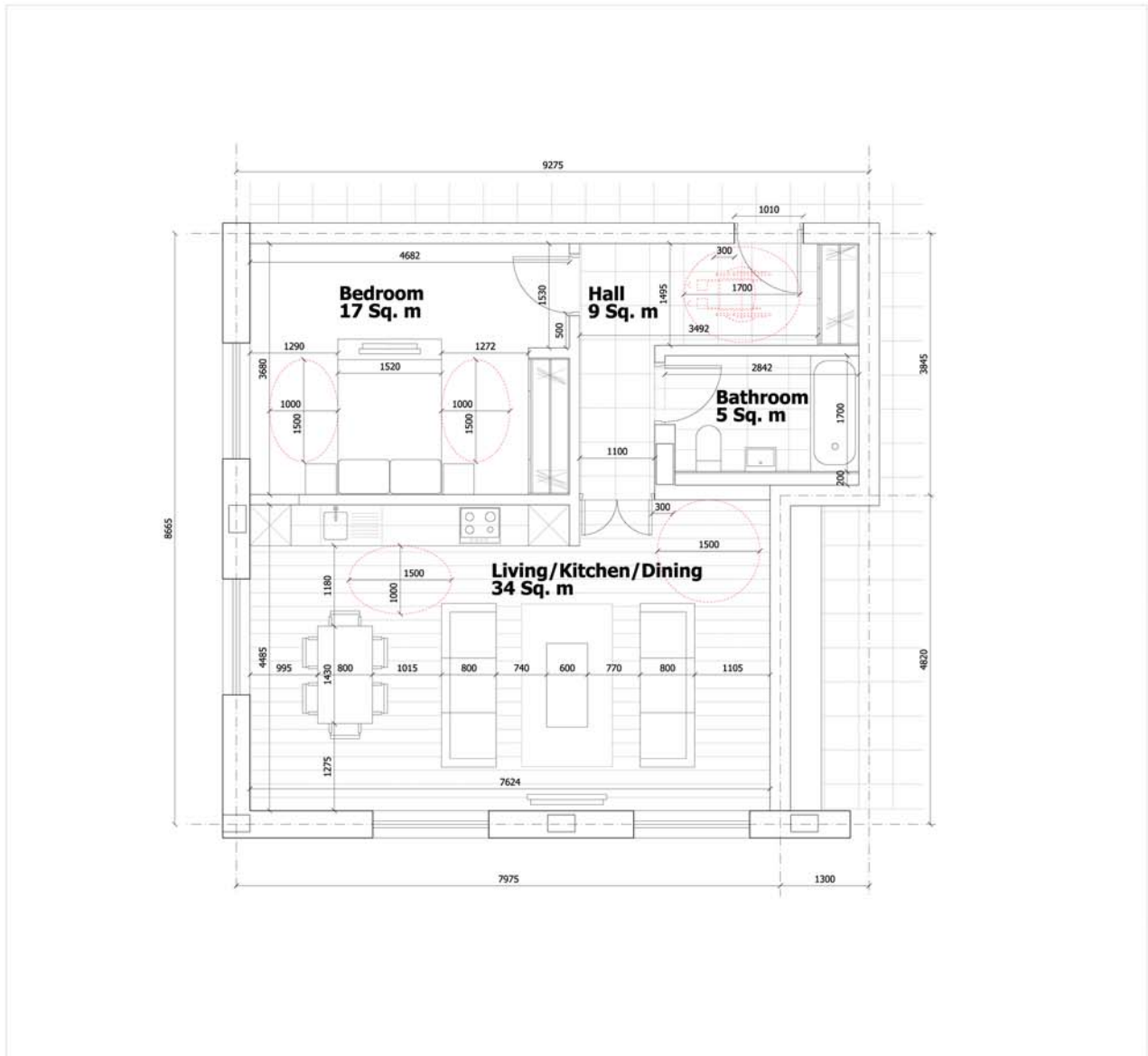


NOTES:
 DO NOT SCALE FROM THIS DRAWING.
 ALL DIMENSIONS TO BE CHECKED ON SITE.
 ALL OMISSIONS AND DISCREPANCIES TO BE REPORTED TO THE ARCHITECT IMMEDIATELY.

ALL RIGHTS RESERVED. THIS WORK IS COPYRIGHT AND CANNOT BE REPRODUCED OR COPIED OR MODIFIED IN ANY FORM OR BY ANY MEANS, GRAPHIC ELECTRONIC OR MECHANICAL, INCLUDING PHOTOCOPYING WITHOUT THE WRITTEN PERMISSION OF SQUIRE AND PARTNERS ARCHITECTS.



B2

Apartment G1
 1 Bed
 2 Person
 2 Hab Rooms
 NIA: 68 Sq. m

01 GROUND LEVEL, 1 BED APARTMENT
 10004_P_00_D811_1

Wheelchair Accessible Flats

- Lifetime Homes Compliance
- Clear opening width of front door 1010 mm
 - All passageways meet required minimum widths
 - Wheelchair manoeuvre space in all rooms

- Wheelchair Housing Design Guide Compliance
- Manoeuvrability space as required for wheelchair accessible rooms
 - Entry hall 1500mm wide
 - 300mm to both sides of each door leading edge
 - 800mm minimum passage between all furniture
 - Bathroom adapted for full accessibility
 - 1000mm clear for side transfer to armchairs and beds

Revision description	Date	Check	Rev
Issued for Planning	07/02/11	SG	A

Squire and Partners

77 Wicklow Street London WC1X 9JY
 T: 020 7278 5555 F: 020 7239 0495

info@squireandpartners.com
 www.squireandpartners.com

Project
 St Edmunds Terrace,
 London, NW8

Drawing
 1 Bed Apartment
 Flat Type G1
 Block 2

Drawn	Date	Scale
SG	17/05/2010	1: 50@A1 1: 100@A3
Job number	Drawing number	Revision
10004	B2_P_00_D811_01_001	A