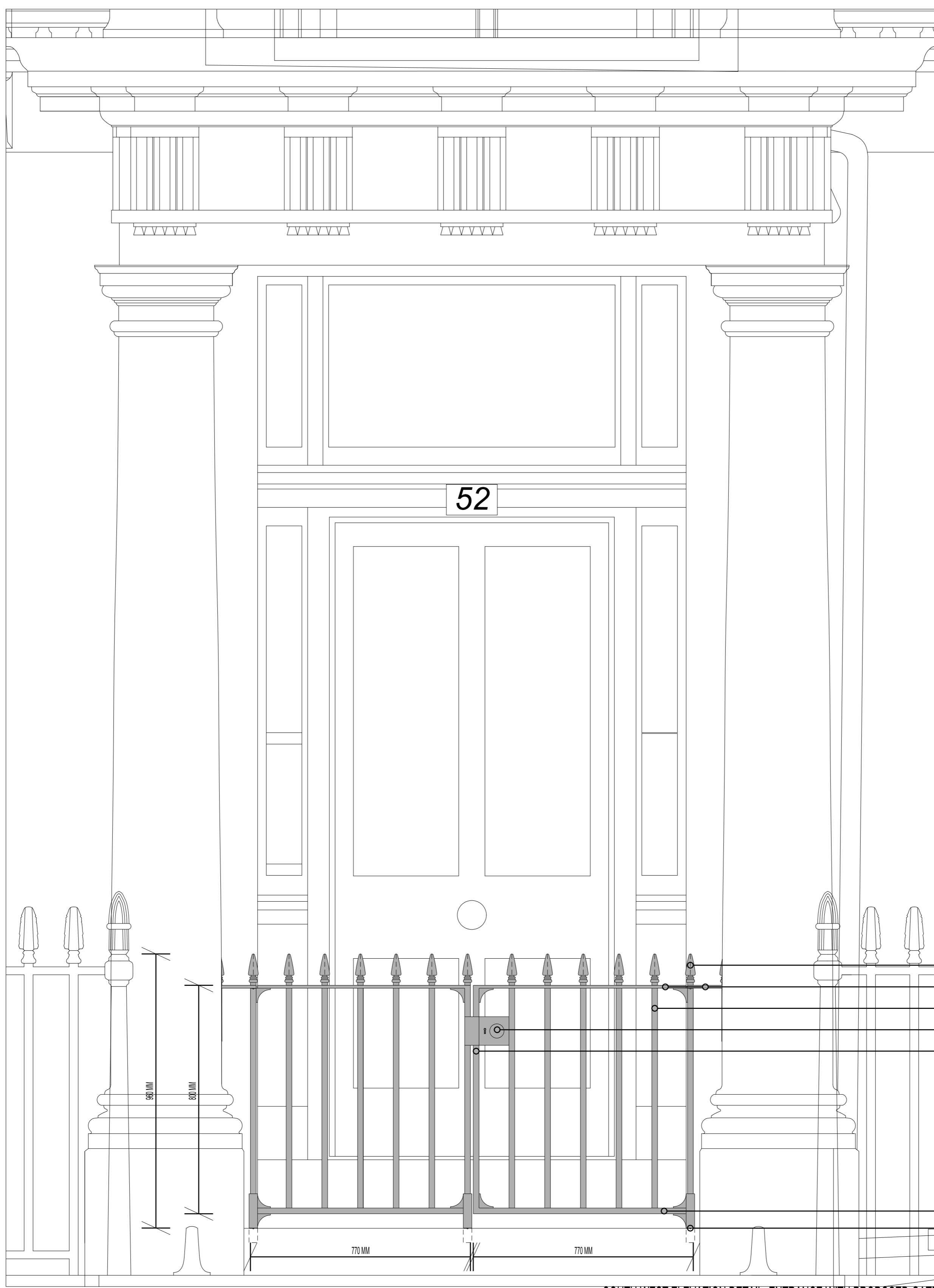


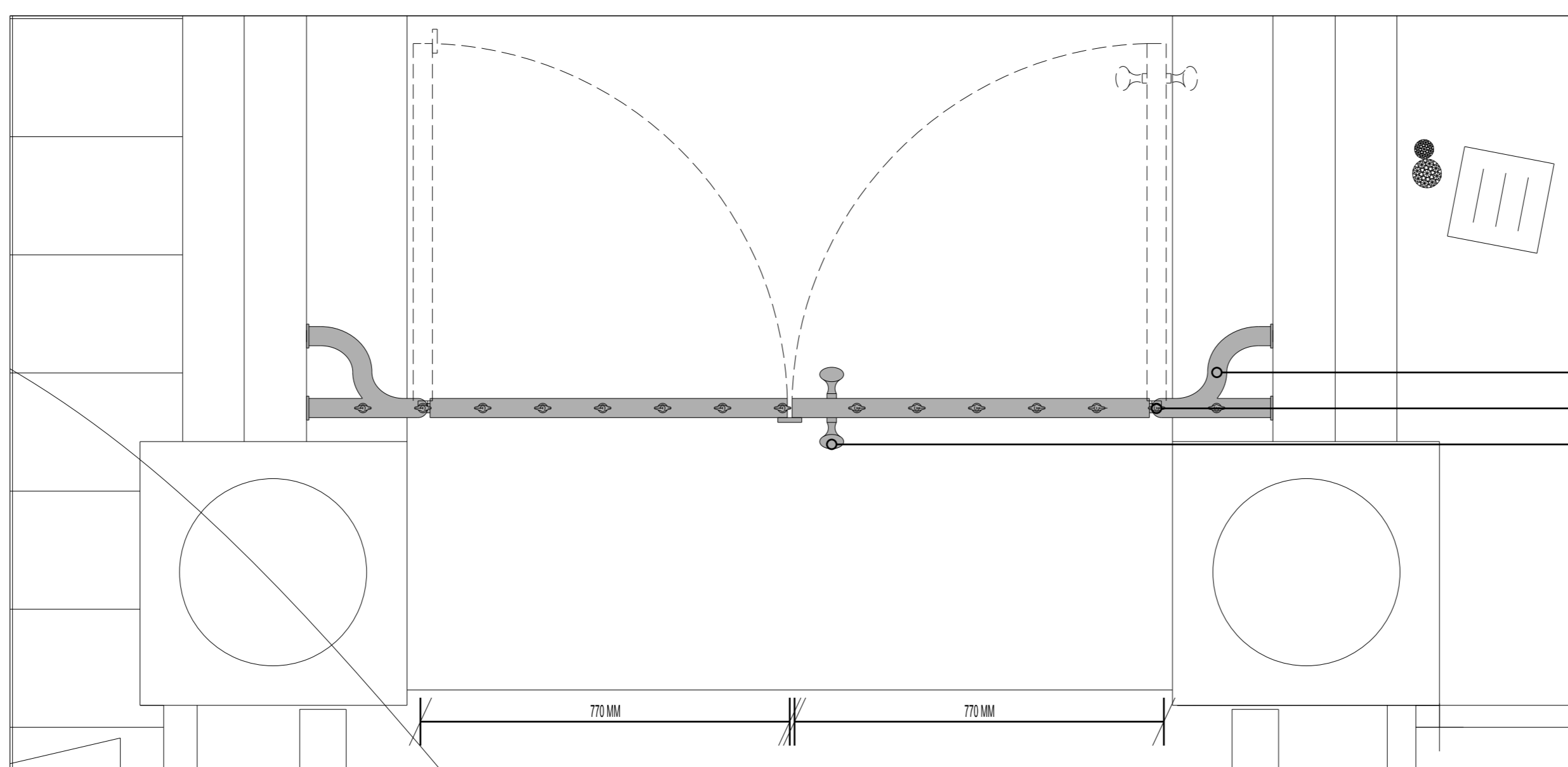
This drawing is for design purposes only. Do not scale from this drawing other than via scale bar. All dimensions are to be checked on site and any discrepancies noted in writing to PA. All dimensions are in millimetres unless noted otherwise. If in doubt ask the contract administrator.

Rev	Date	Description



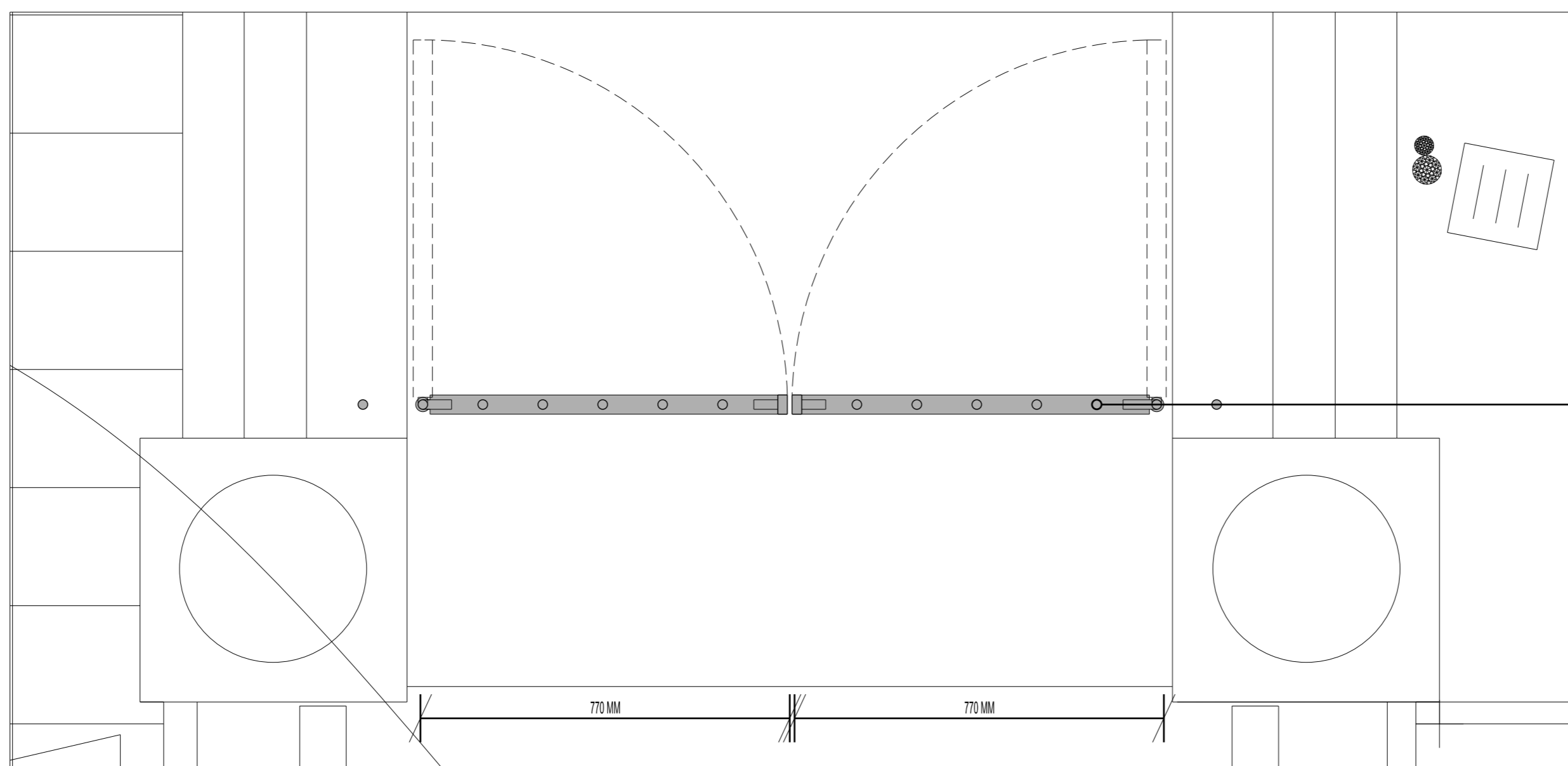
- BLACK, POWDER COATED ENTRANCE GATE IN WELDABLE CAST IRON AND MILD STEEL
- FINIAL TO MATCH EXISTING, HEIGHT 100MM, WELDABLE CAST IRON
- HORIZONTAL RAILING BAR, RECTANGULAR PROFILE, 10MM X 40MM, MILD STEEL
- VERTICAL RAILING BAR, CIRCULAR PROFILE, 20MM DIAMETER, 125MM CENTRES, MILD STEEL
- LOCK WITH CIRCULAR DOOR KNOB
- VERTICAL RAILING BAR, RECTANGULAR PROFILE, 20MM X 40MM DIAMETER, MILD STEEL
- HORIZONTAL RAILING BAR, RECTANGULAR PROFILE, 20MM X 40MM, MILD STEEL
- PIVOT PIN IN COUNTERSUNK HOLE

SOUTH WEST ELEVATION DETAIL, ENTRANCE WITH PROPOSED GATE



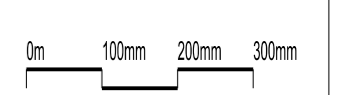
- SUPPORT RAIL, RECTANGULAR PROFILE, 20MM X 40MM, COUNTERSUNK IN WALL
- PIVOT HINGE
- LOCK WITH CIRCULAR DOOR KNOB

GROUND FLOOR PLAN DETAIL, POSITION OF PROPOSED GATE



- VERTICAL RAILING BAR, CIRCULAR PROFILE, 20MM DIAMETER, MILD STEEL AT 125MM CENTRES, WELDED TO HORIZONTAL RAILING BAR, RECTANGULAR PROFILE, 20MM X 40MM, MILD STEEL

GROUND FLOOR SECTION DETAIL, POSITION OF PROPOSED GATE



**petroschka architects**  
54-56 New Gate, London EC1A 3EE

52 GORDON SQUARE LONDON W1H 0PH PROPOSED ENTRANCE GATE	
Scale:	1:10 @ A1
Date:	01.04.2014
Job No:	038
Dwg No:	AL-038-111-10
Dwg Status:	Discharge of Condition 4b
Revision:	00
Dwg by:	JMP
Checked by:	JMP