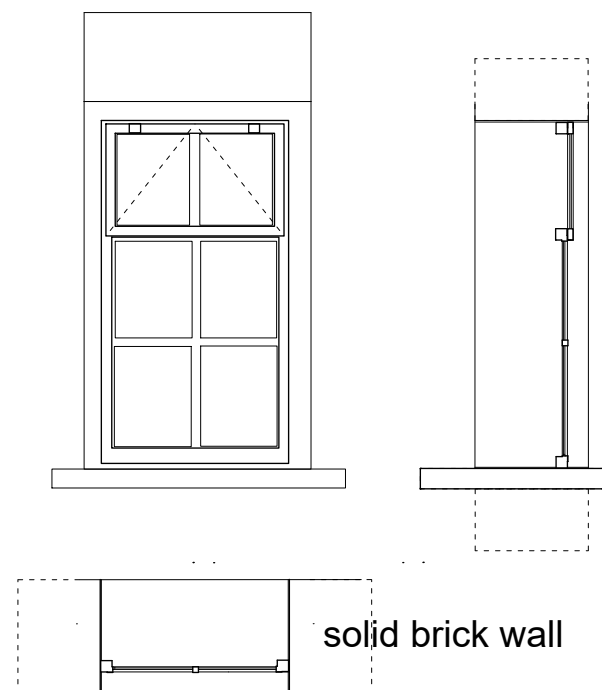
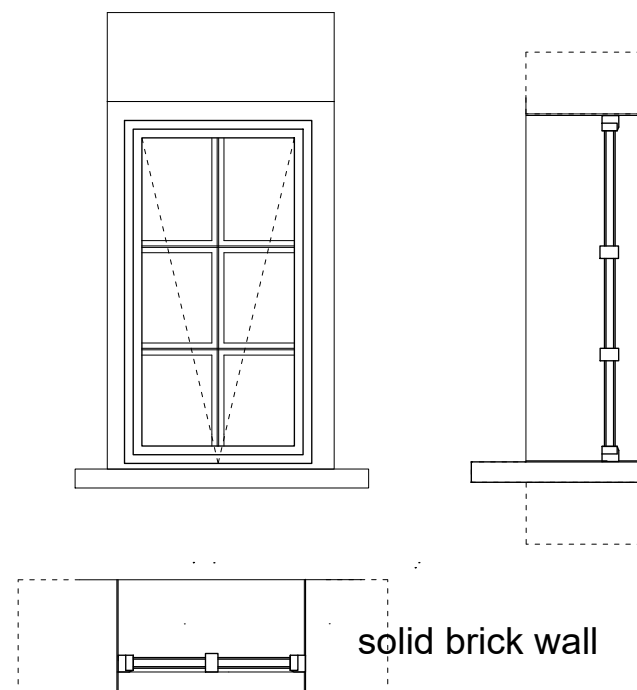


EXISTING METAL WINDOW  
(SINGLE-GLAZED)



PROPOSED METAL WINDOW  
(DOUBLE-GLAZED)



39 Highgate West Hill  
London N6 6LS

Window Details  
DRG no: 36HWH Window Details Rev A

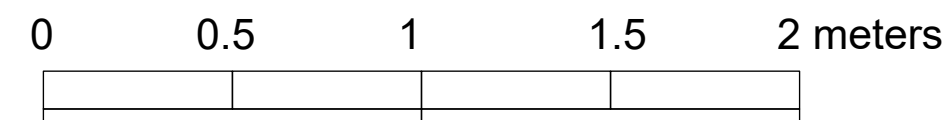
Drawn 2 June 2025

Scale 1:20 when printed on A3

New windows to match in materials,  
proportions and colour of the existing.

Window position is retained to match existing  
in relation to window reveal and cill.

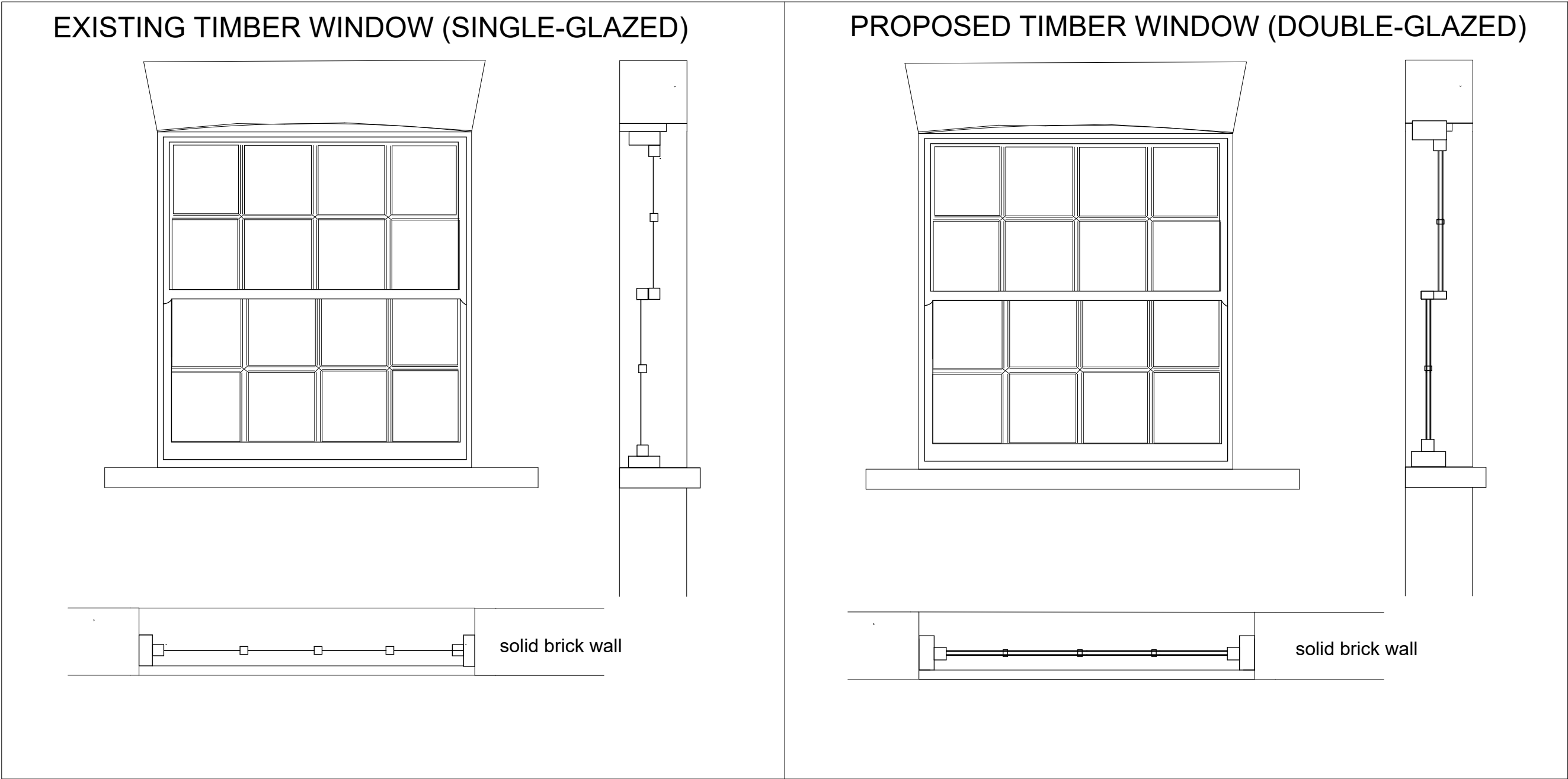
Please refer to the submitted window details to see the details  
(glazing bars, frame, details, bottom rails).



New window to match in materials, proportions and colour of the existing.

Window position is retained to match existing in relation to window reveal and cill.

Please refer to the submitted window details of top rail, sash box, glazing bars, meeting bars, bottom rails.

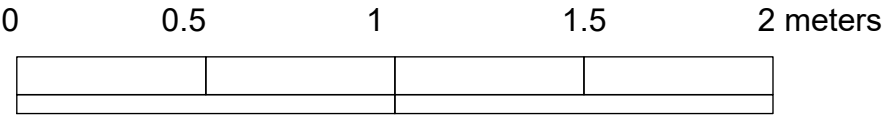


39 Highgate West Hill  
London N6 6LS

Window Details  
DRG no: 36HWH Window Details 2 Rev A

Drawn 2 June 2025

Scale 1:20 when printed on A3



PERMITTED USE: These drawings have been prepared solely for the purpose of obtaining planning permission for 39 Highgate West Hill N6 6LS and are intended exclusively for submission to the relevant planning authority.