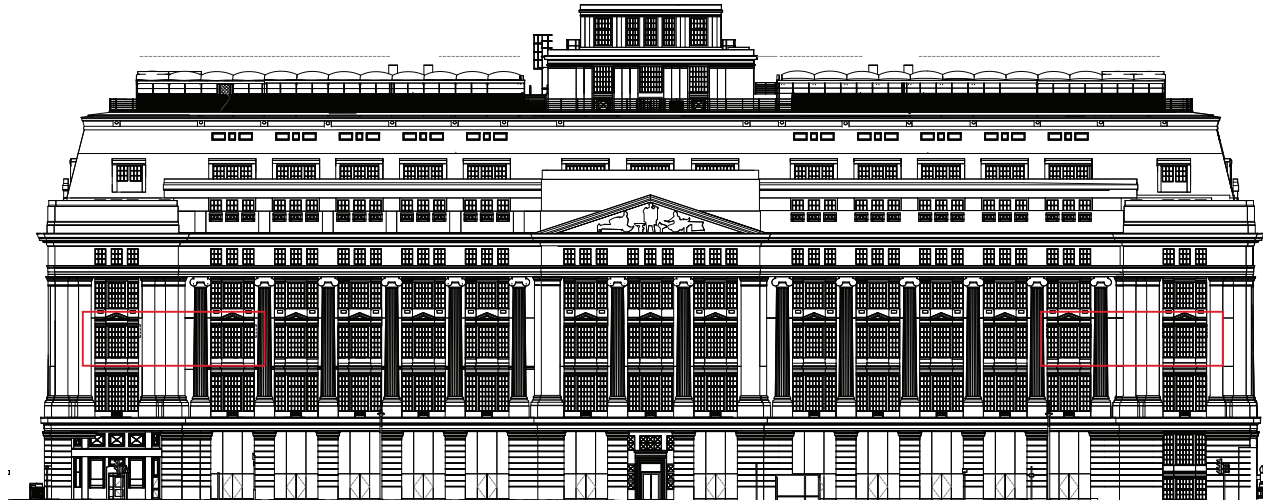
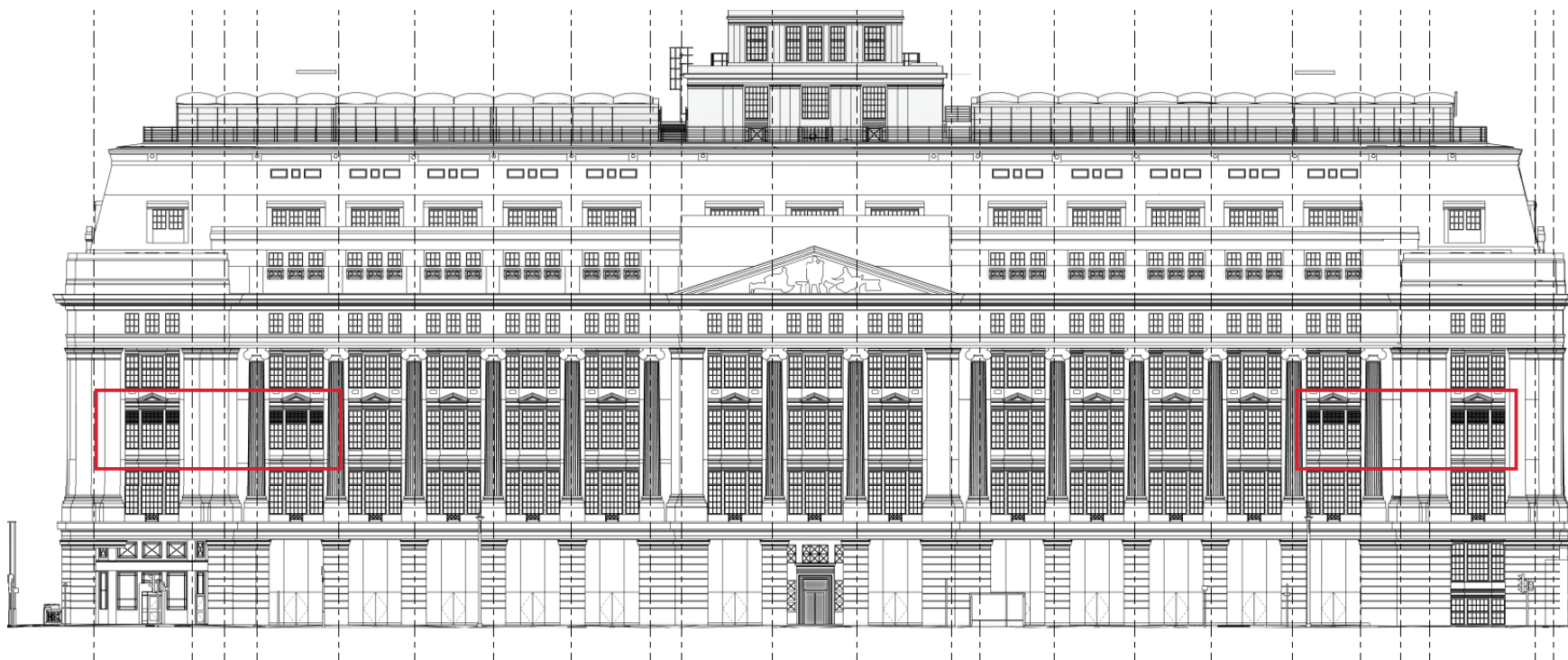


VICTORIA HOUSE - Second Floor Louvre Replacement / Reglazing



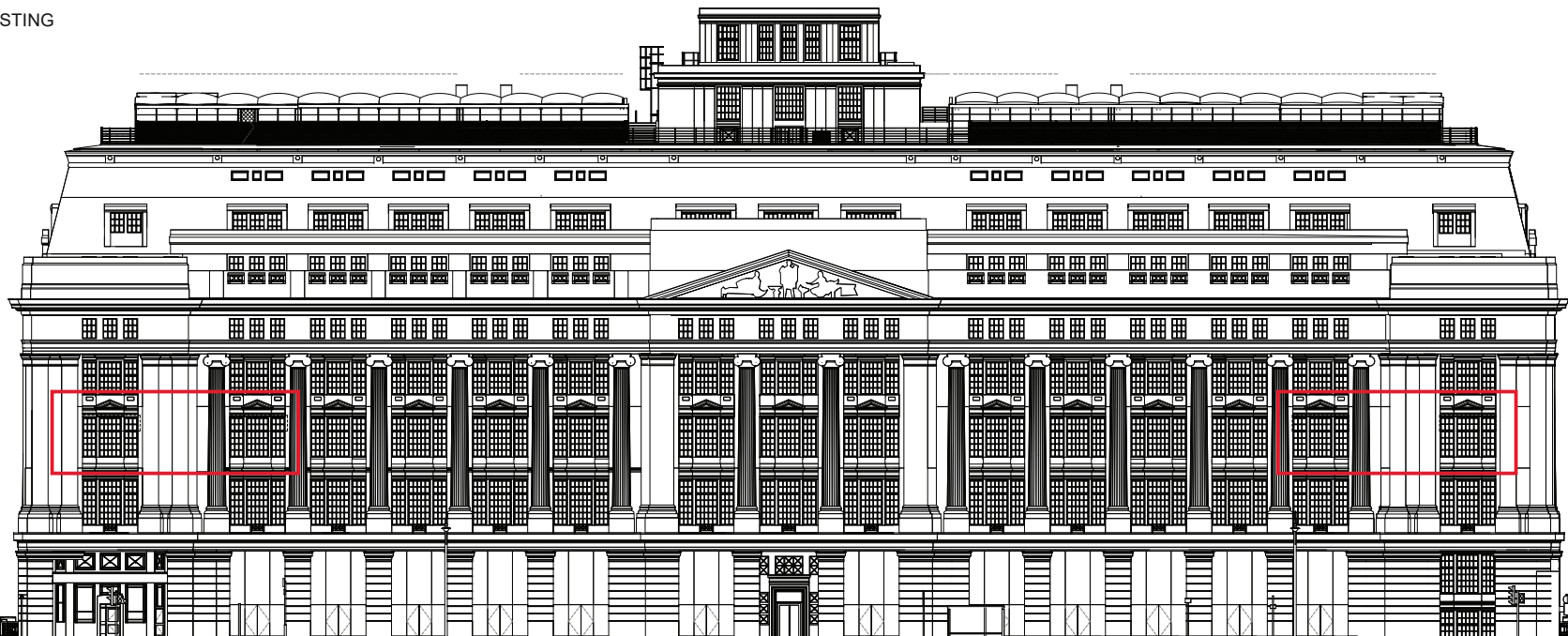
Louvre removal and re-glazing principles



Location of existing louvers.

These are installed internally behind the existing window frames where the adjacent areas of glazing within the top two panes were removed to allow through air.

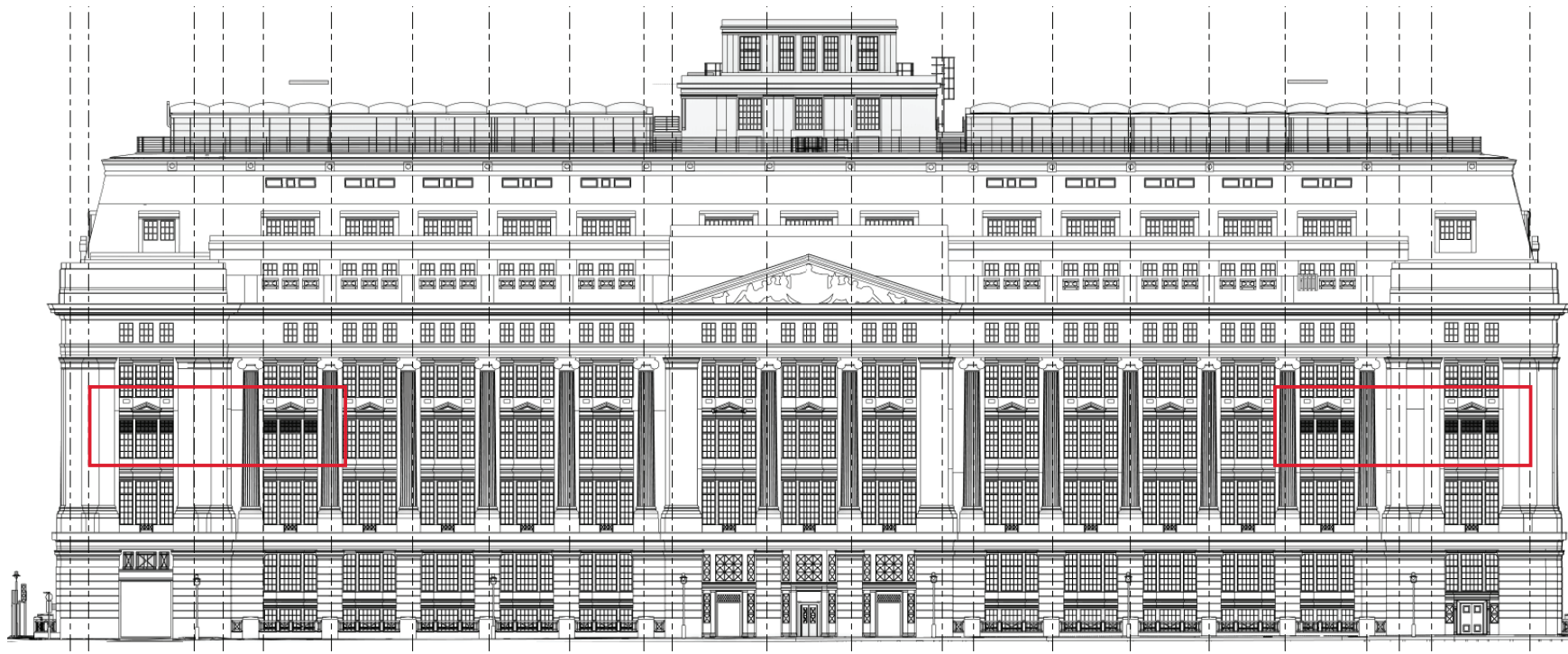
EXISTING



Louvers removed / Windows Reglazed

External louvers removed - existing window frames re-exposed. Those panes that had glazing removed have been re-instated / re-glazed.

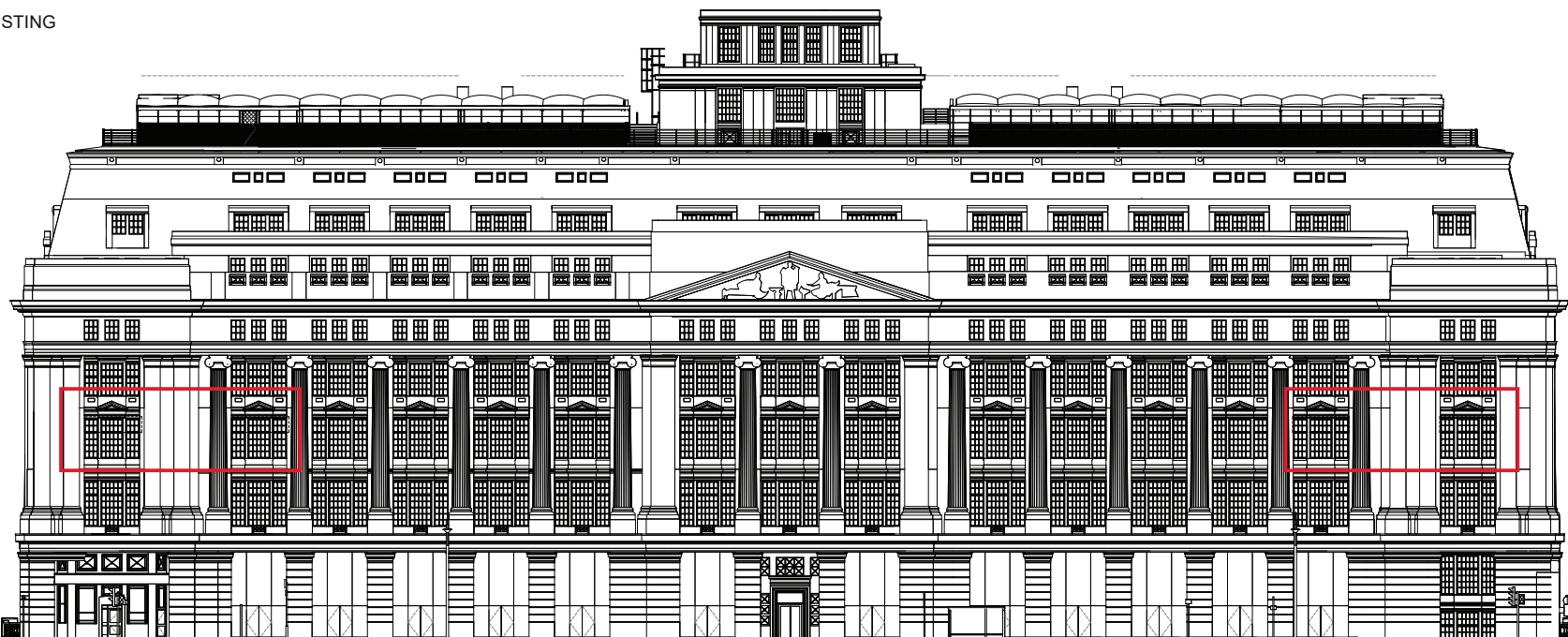
PROPOSED



Location of existing louvers.

These are installed internally behind the existing window frames where the adjacent areas of glazing within the top two panes were removed to allow through air.

EXISTING



Louvers removed / Windows Reglazed

External louvers removed - existing window frames re-exposed. Those panes that had glazing removed have been re-instated / re-glazed.

PROPOSED

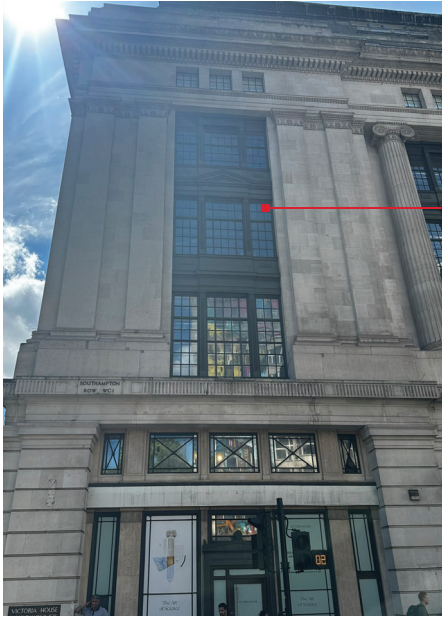


Existing metal louvres sat internal to the original existing window frames.
Historically glazing had been removed from corresponding window panes to allow air passage through.



Non - glazed areas that require re-glazing.

Historic louvre elements carefully removed to reveal existing window behind.



Reinstated glazing in existing window frames
(External Southampton Row)



Reinstated glazing in existing window frames
(upper 2 panes). Limited amounts of existing
glazing were located on site and where possible
these were used in the re-glazing exercise.
Frames redecorated

Bottom 4 panes are existing and remain as is.



Reinstated glazing in existing window frames
(External Bloomsbury Square)



Reinstated glazing in existing window frames
(upper 2 panes). Limited amounts of existing
glazing were located on site and where possible
these were used in the re-glazing exercise.
Frames redecorated

Bottom 4 panes are existing and remain as is.