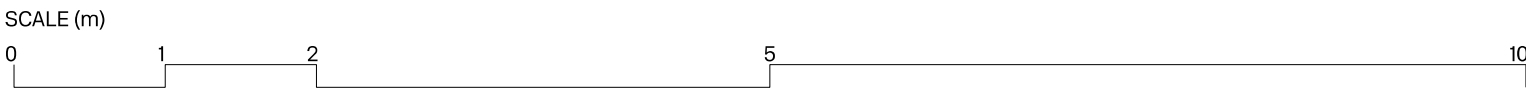


01 Plan



Drawing Notes

Rev	Date	Status	Note
01	09.02.2024	Planning	Planning Issue
02	11.04.2025	Planning	Planning Issue

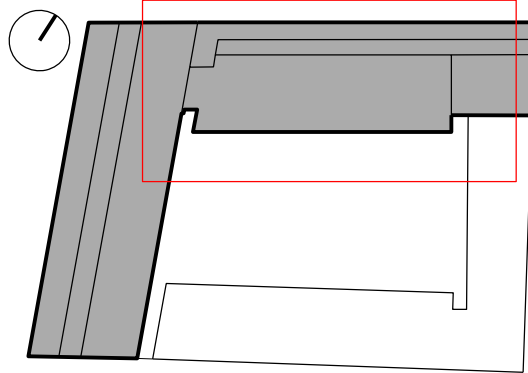
Team

Client	Lazari Investments Ltd
Architect	Gibson Thornley Architects
Landscape Architect	Studio ONB
Graphic Designer	BOB Design
Structural Engineer	Quadrant Harmon
Civil Engineer	GLP
MEP Engineer	GLP
Fire Consultant	Jenson Hughes
Sustainability Consultant	GLP
Cost Consultant	C N Associates
Lighting Consultant	Pritchard Themis
Planning Consultant	CBRE
Approved Inspector	Salus
Project Manager	C N Associates

General Notes

01. Do not scale from this drawing.
02. All dimensions to be checked on site by the contractor and such dimensions to be his responsibility.
03. Report all drawing errors, omissions and discrepancies to the architect.
04. This document may be used in an uncontrolled CAD format to enable others to use it as background information to make alterations and/or additions. In that instance the file will be accompanied by a PDF version. It is for those making such alterations and additions to ensure that they make use of current background information.
05. Gibson Thornley Architects accepts no liability for any such alterations or additions to the background information or arising out of changes to background information which occur prior to alterations or additions being made.

Location



Gibson Thornley

Job Title	Maple House
Drawing Title	Proposed Block B Roof Plan
Drawn by	FOS
Checked by	BG
Scale	1:100 @ A1 / 1:200 @ A3
Status	Planning

Project	Zone	Type	Classification	Drawing No	Revision
20024B	-	AL	[00]	137	02

Architects

Gibson Thornley Architects Limited  
No. 4 The Hangar, Perseverance Works  
25-27 Hackney Road  
London E2 7NX

+44 (0)20 7729 7064  
www.gibsonthornley.com