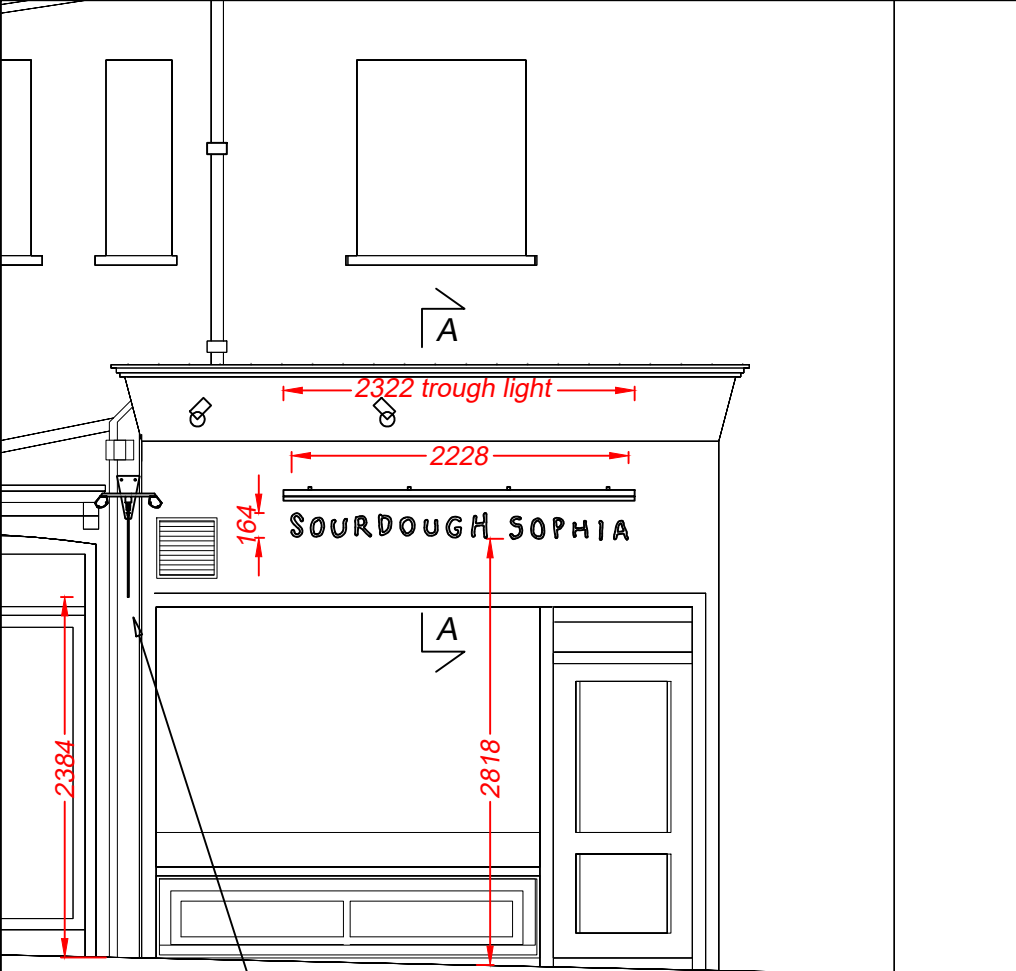
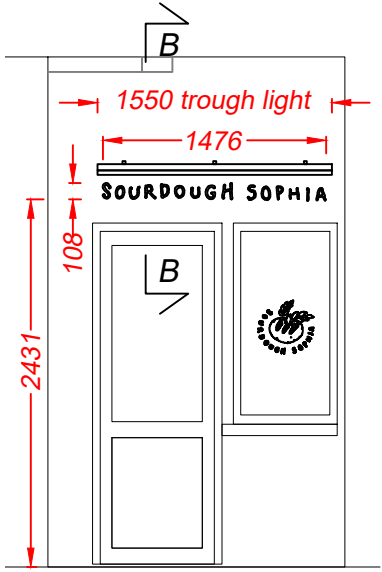


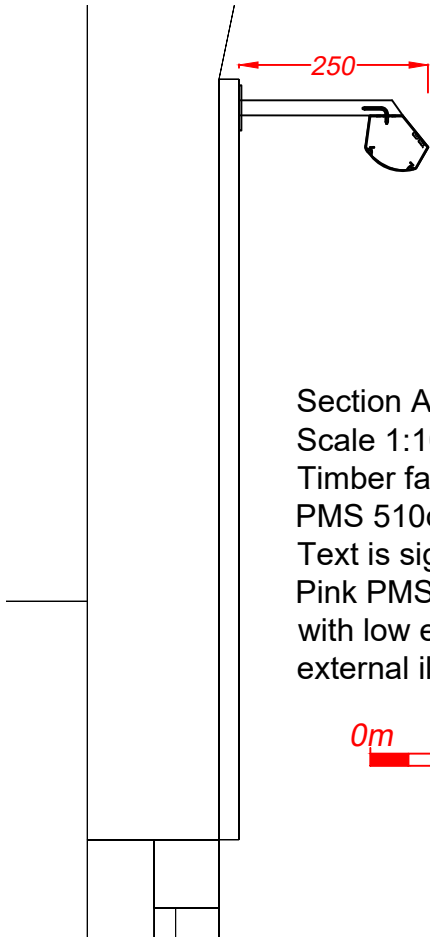
PROPOSED



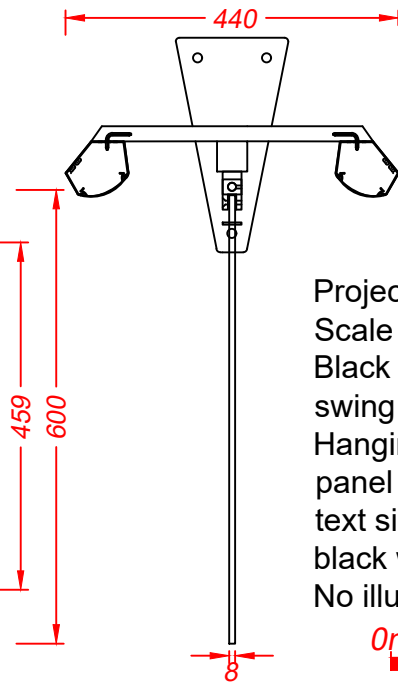
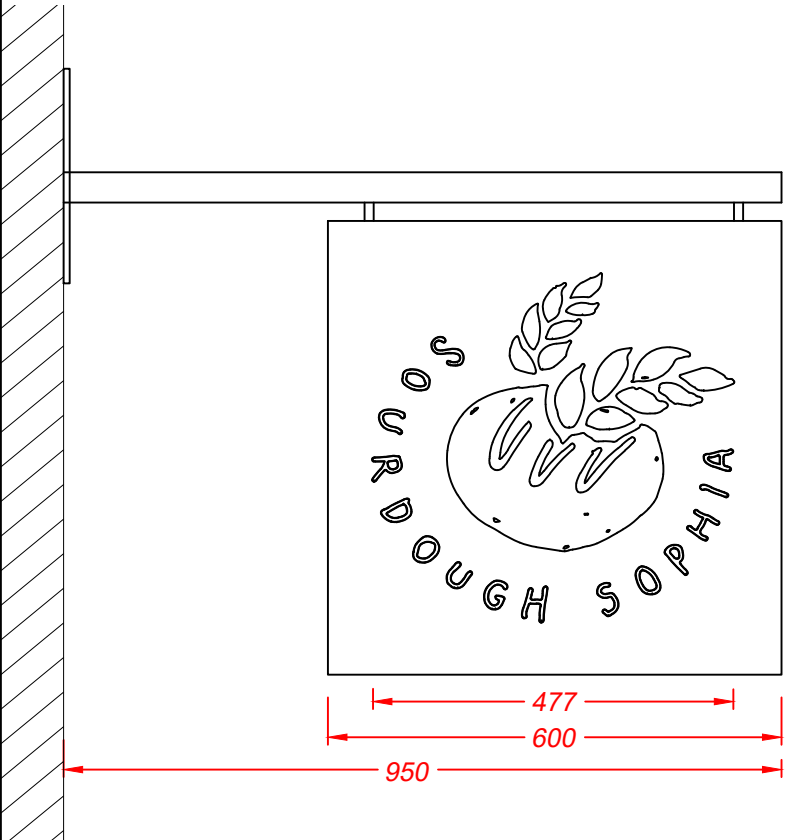
projected sign position
Perrins Court Elevation
Scale 1:50



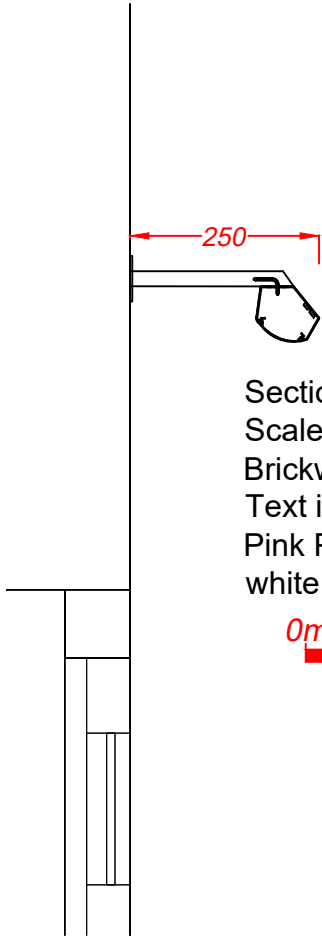
Rear Entrance
Scale 1:50



Section A-A through the text
Scale 1:10
Timber fascia panel is painted pink PMS 510c.
Text is signwritten in black.
Pink PMS 510c steel trough is fitted with low energy warm white LEDs for external illumination.



Projected sign - 1 off
Scale 1:10
Black steel projecting arm with welded swing blocks for a hanging sign.
Hanging sign is an 8mm aluminium panel finished pink PMS 510c with the text signwritten onto the panel faces in black with a black and darker pink logo.
No illumination.



Section B-B through the text
Scale 1:10
Brickwork is painted pink PMS 510c.
Text is signwritten onto the painted brick in black.
Pink PMS 510c steel trough is fitted with low energy warm white LEDs for external illumination.



		Client Sourdough Sophia	
		Address/Job details 14 Perrins Court Hampstead NW3 1QS	
		Proposed Signage	
		Job No -	
		Drawn by DN	Date 14/05/25
		Scale As specified (A3)	Drawing No 597049-2
		Rev	