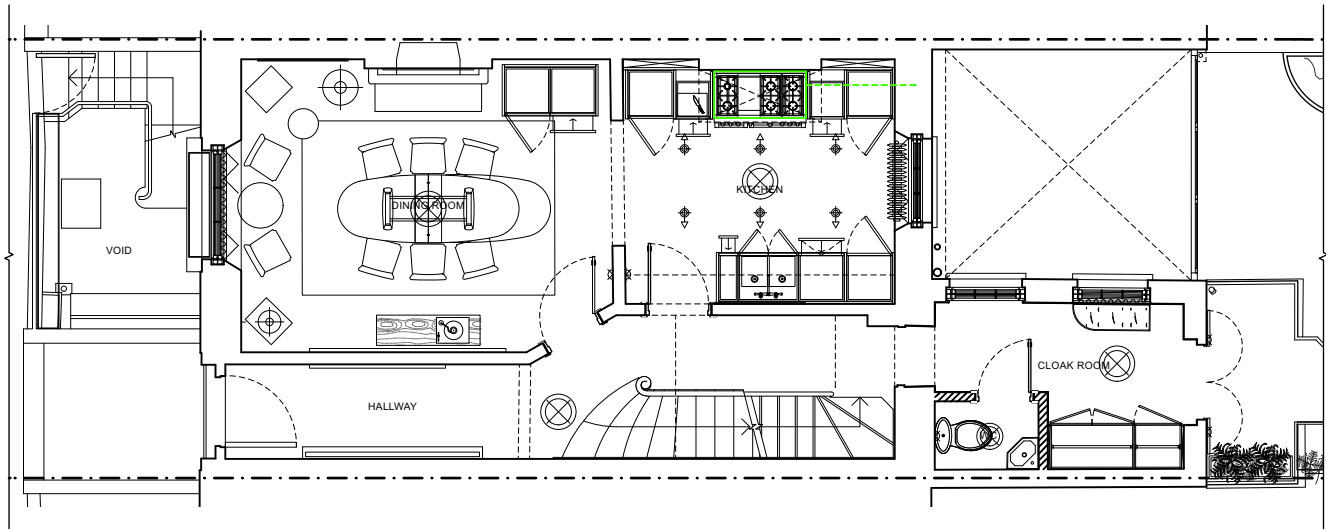


KEY

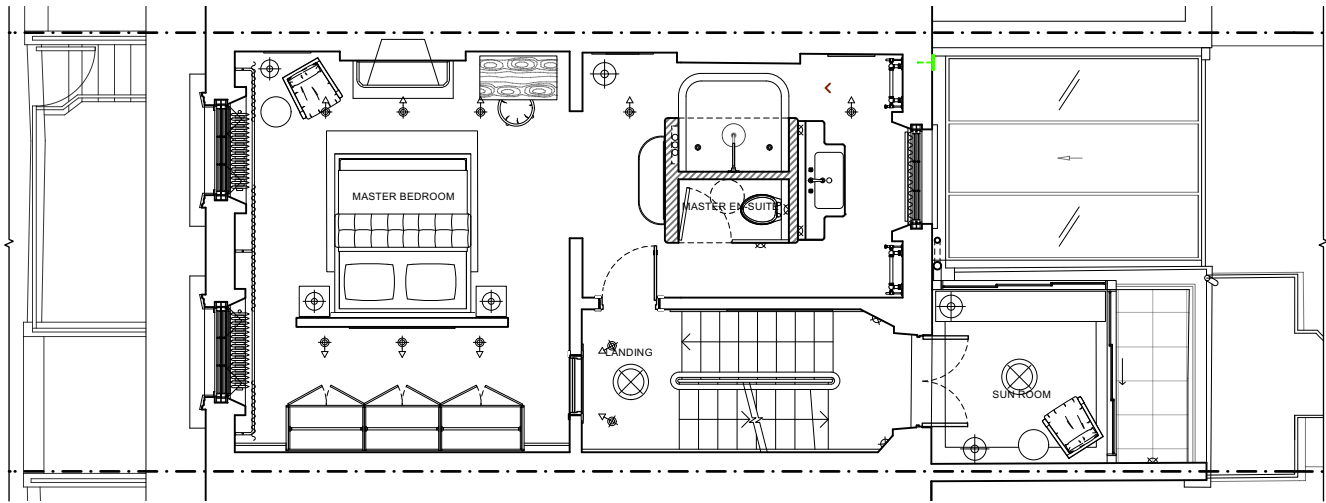
----- Proposed Mechanical



PROPOSED MECHANICAL - UPPER GROUND FLOOR (1:100)



PLANNING



PROPOSED MECHANICAL - FIRST FLOOR (1:100)

No	Date	By	Revision
----	------	----	----------

Project
10 Regents Park Terrace, NW1 7EE

Drawing
Proposed Mechanical

Job 1487	Dwg No. 352
--------------------	-----------------------

Scale @ A3 1:100	By TK	First Issue 09/05/25
----------------------------	-----------------	--------------------------------

DPA

Dunthorne Parker Architects

Call us 0207 258 0411
Email contact@dunthorneparker.co.uk
Look www.dunthorneparkerarchitects.co.uk
Find us Suite 61-62 | The Hop Exchange |
24 Southwark Street | London | SE1 1TY