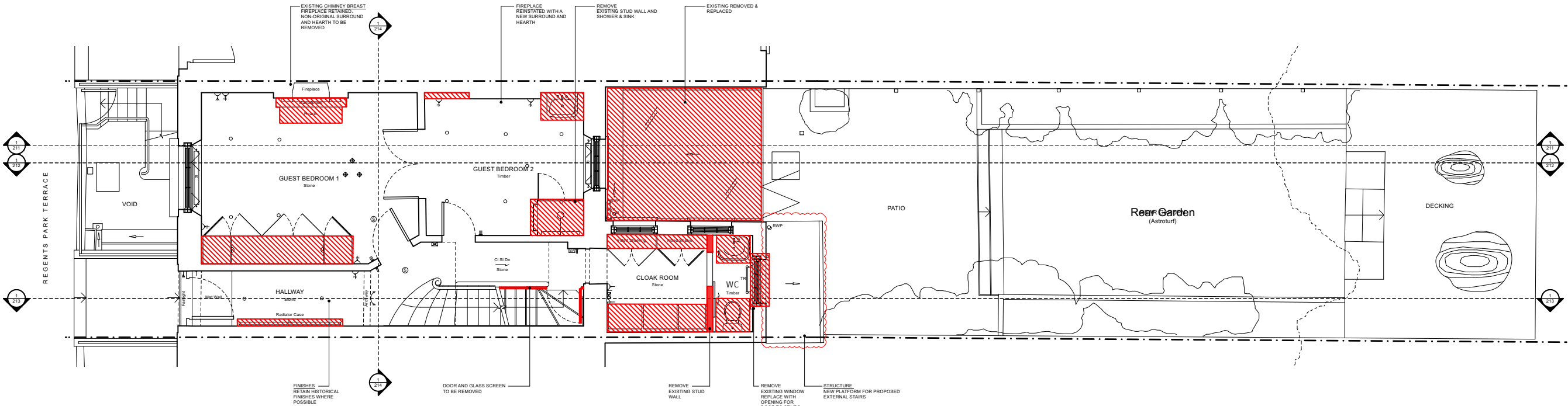


KEY

- Party Wall Line
- To be altered
- To be demolished

NOTE:

All existing floor, wall and ceiling finishes to be repainted or removed and replaced with like-for-like finishes.



PLANNING

No	Date	By	Revision
Project 10 Regents Park Terrace, NW1 7EE			
Drawing Demolition Upper Ground Floor Plan			
Job 1487	Dwg No. 251		
Scale @ A3 1:100	By TK	First Issue 09/05/25	