

Dear Miriam

I did a more accurate comparison between the scale of the Gardeners building and the Colonnade in the West cemetery.

Please see attached. Worryingly, the scale is even larger than I had originally portrayed in my marked up photos,

Whilst writing, I had a conversation with Claire Brady (Historic England) this afternoon. It came up in conversation that someone should put an alternative forward to the current proposals.

In our final objection letter we had suggested some options worth pursuing, and one of them was a Hybrid scheme.

The area identified to the south of the cemetery adjacent to Stonleigh Terrace is accessible by foot and is private and remote. The applicants plans themselves depict this.

We suggest that all of the gardeners facilities other than the storage of the heavy machinery can be accommodated in this strip.

Facilities for volunteers can also be housed here, where facilities like showers and wc's can be shared.

The facilities can be build as a number of separate diminutive buildings. One for staff, one for volunteers, one for plant, one as a workshop etc.

These buildings do not need to compete architecturally or impact the setting of the grade 1 listed landscape and monuments. They can be recessive in both scale and architectural language.

The gardening vehicles can be incorporated into the rear of the proposed 'Building 2' at the heart of the Cemetery and the Operations Building in a more central position. The cafe could be smaller as could the offices.

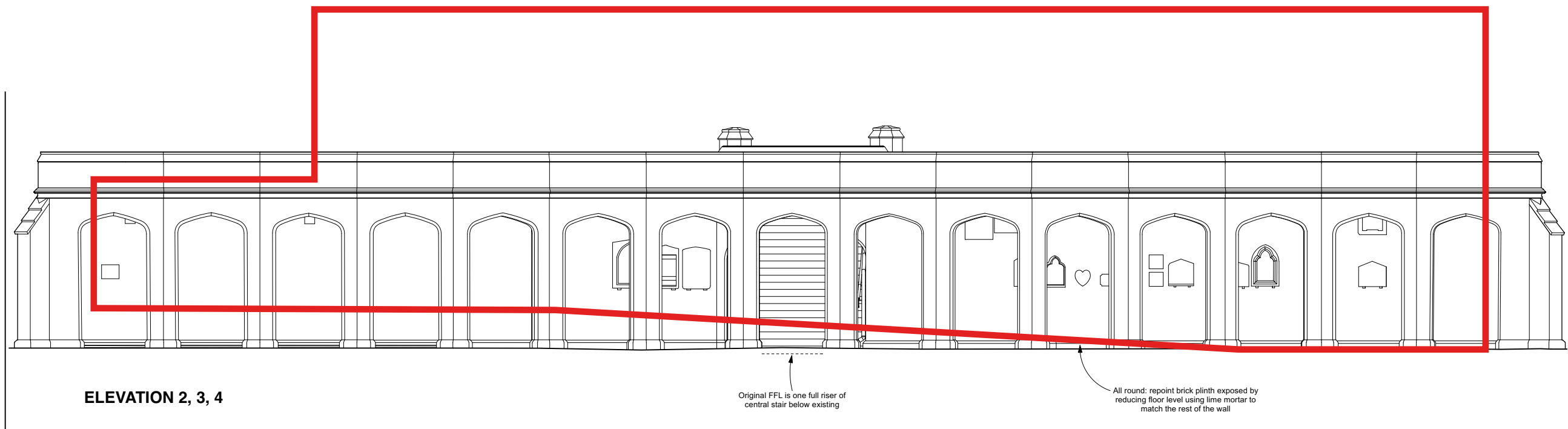
Please let me know your thoughts?

Kind regards

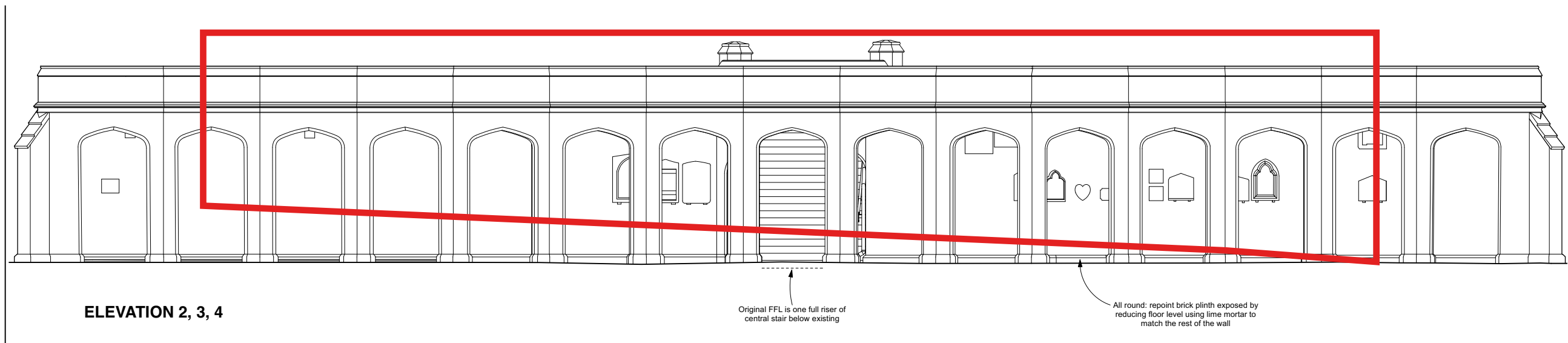
Amir Sanei

HIGHGATE CEMETERY

Scale Comparison Gardeners Building & The West Colonnade



SCALE OF TWO STOREY ELEVATION COMPARED WITH THE WEST COLLONADE



SCALE OF SINGLE STOREY ELEVATION COMPARED WITH THE WEST COLLONADE

