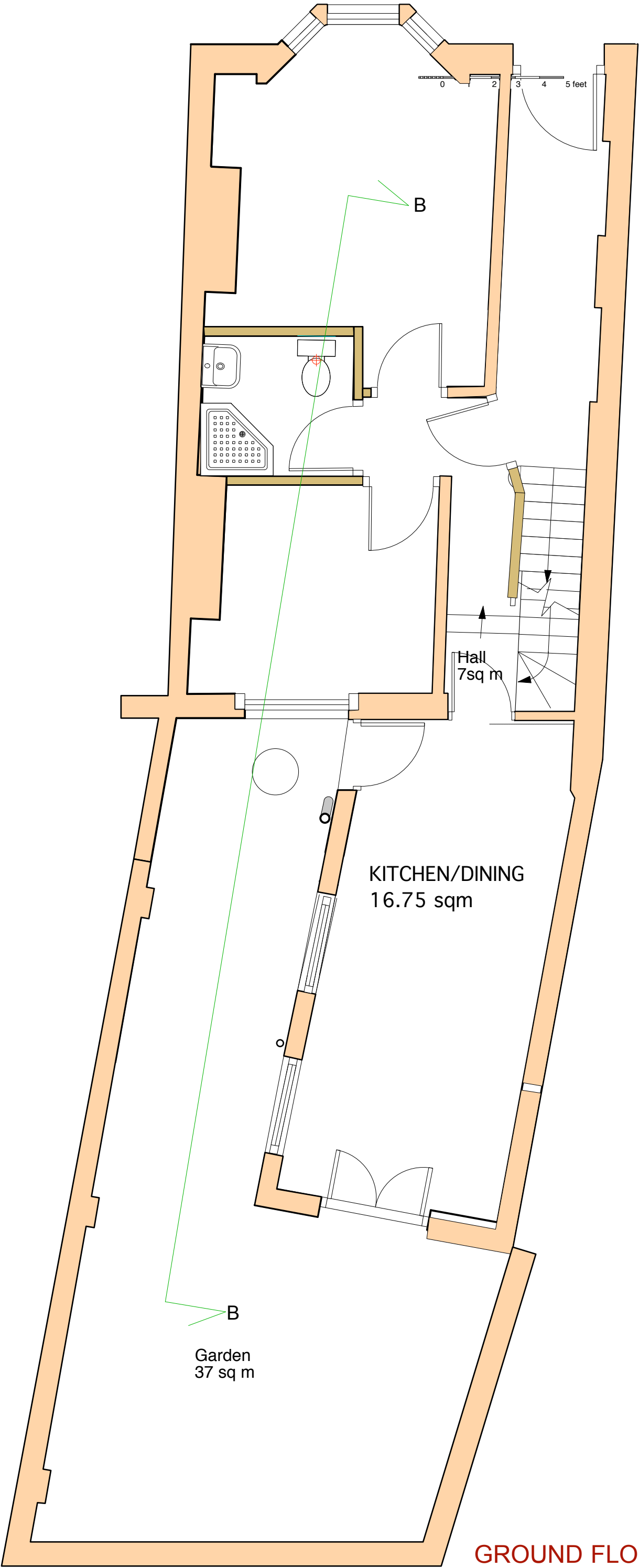
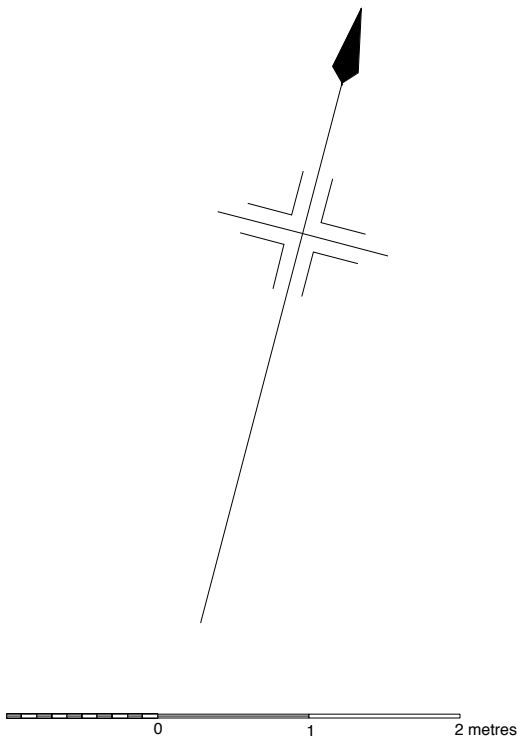


POW 1F - 47 PRINCE OF WALES ROAD, LONDON, NW5 3LJ
House remodelling for Mark Williams
EXISTING GROUND FLOOR PLAN
Scale 1:50@A3

27th April 2008
8th September 2008
5th July 2012
10th July 2012
17th May 2023
23rd April 2025
2nd May 2025

Mark Prizeman AADipl RIBA, chartered architect
Tudor House, 111 High Street, Needham Market, Ipswich, IP6 8DQ
MOB: 07990 525 869
E-MAIL: markprizeman@hotmail.com
WEB: www.prizeman.co.uk



GROUND FLOOR PLAN