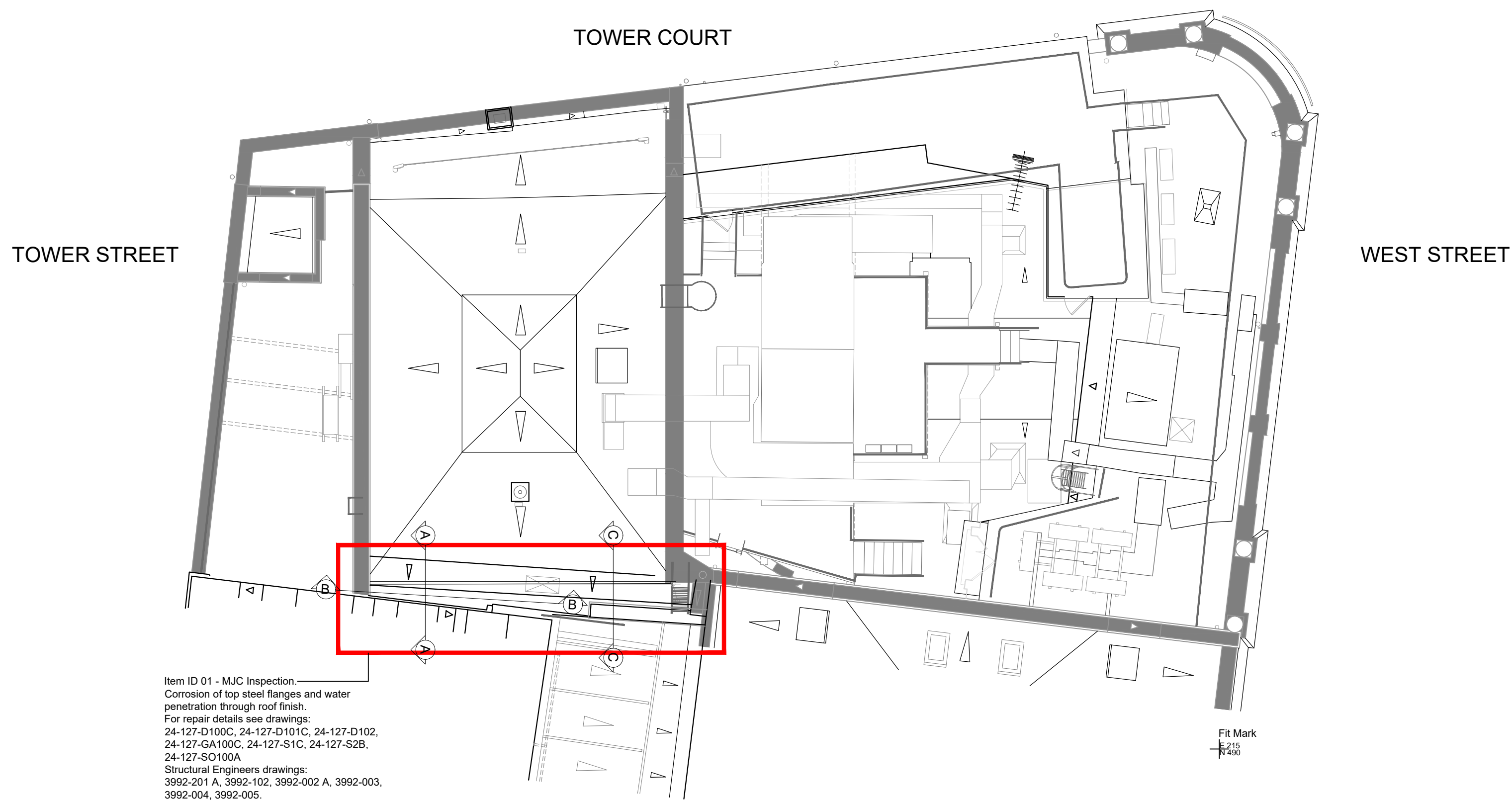


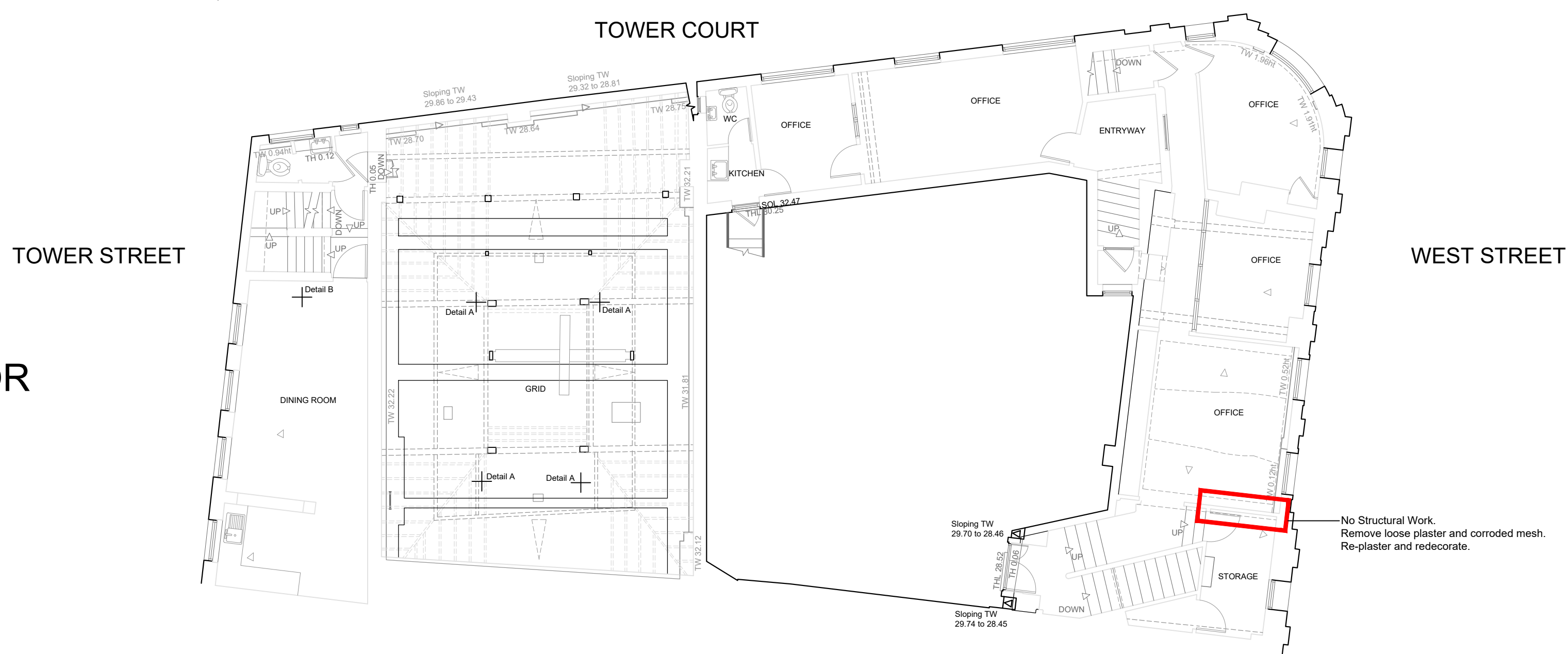
ROOF



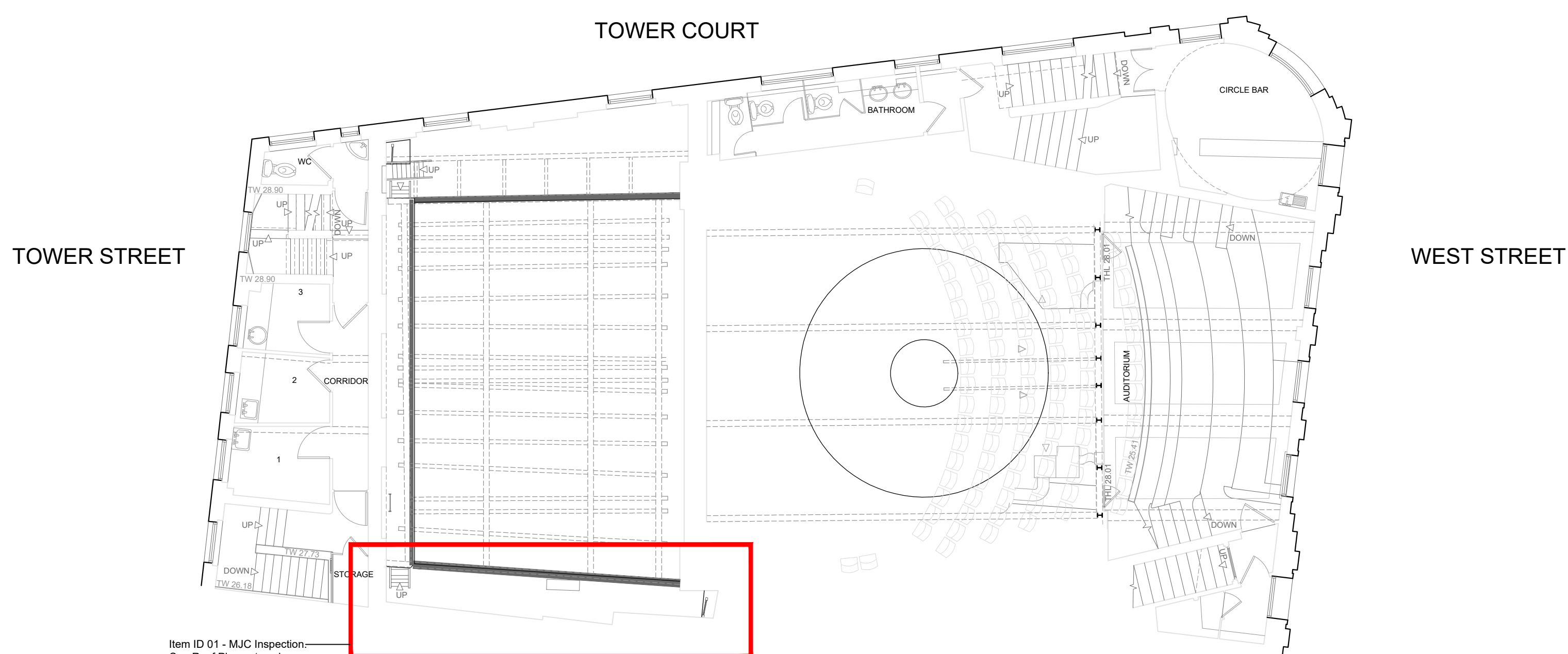
**GENERAL NOTES**

1. Do not scale from this print or use as a template.
2. All dimensions must be verified on site before any work is put in hand and any discrepancies must be reported to the Architect. Where any variations occur between the drawings and detailed drawings, detailed drawings should be worked from.
3. Copyright of this drawing is reserved by Osborne and is issued on condition that it is not copied or disclosed to any third party either wholly or in part without the consent of Osborne in writing.
4. This drawing is to be read in conjunction with all relevant specifications and drawings issued by the Architect, Engineer and other specialists.

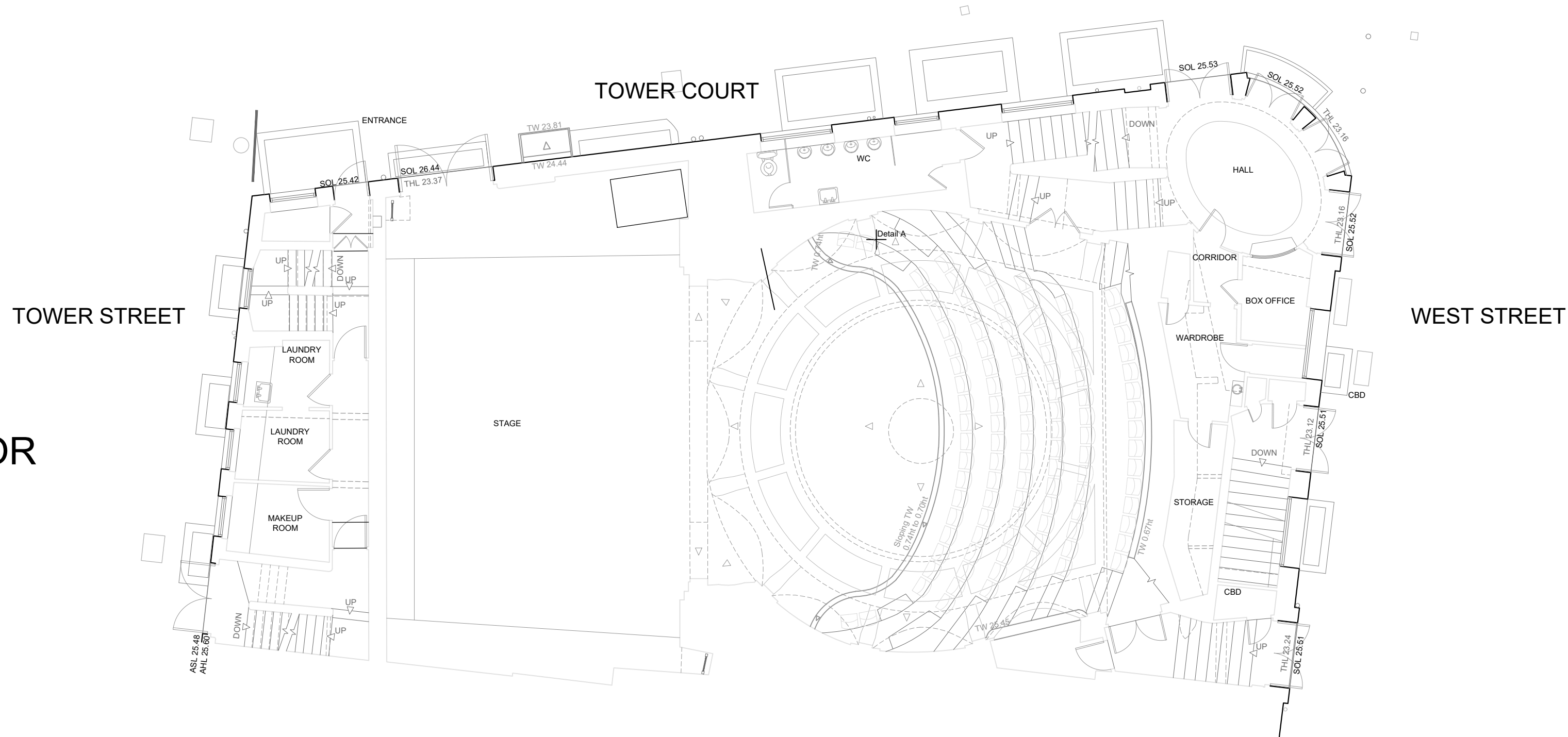
## SECOND FLOOR



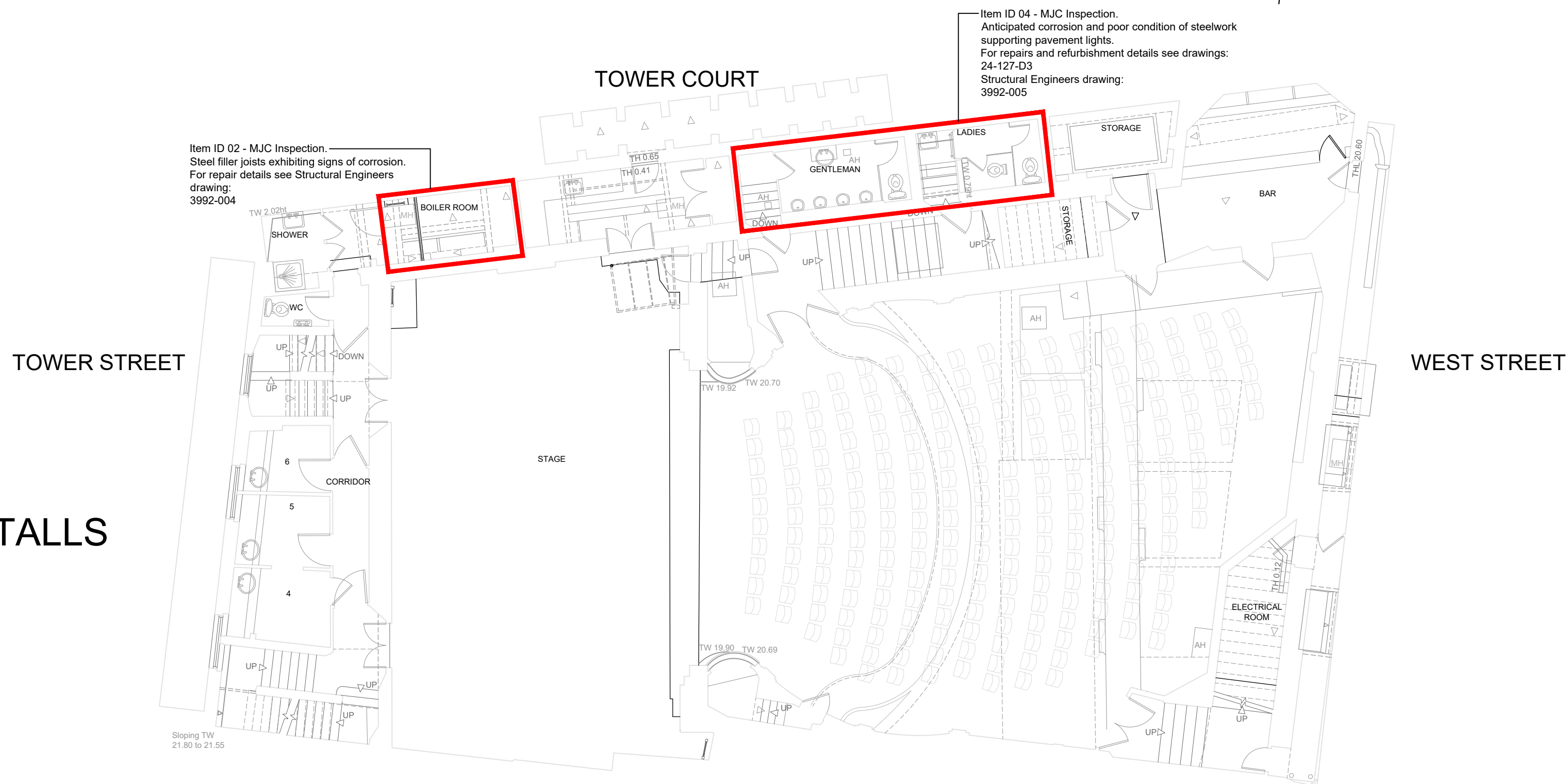
## FIRST FLOOR



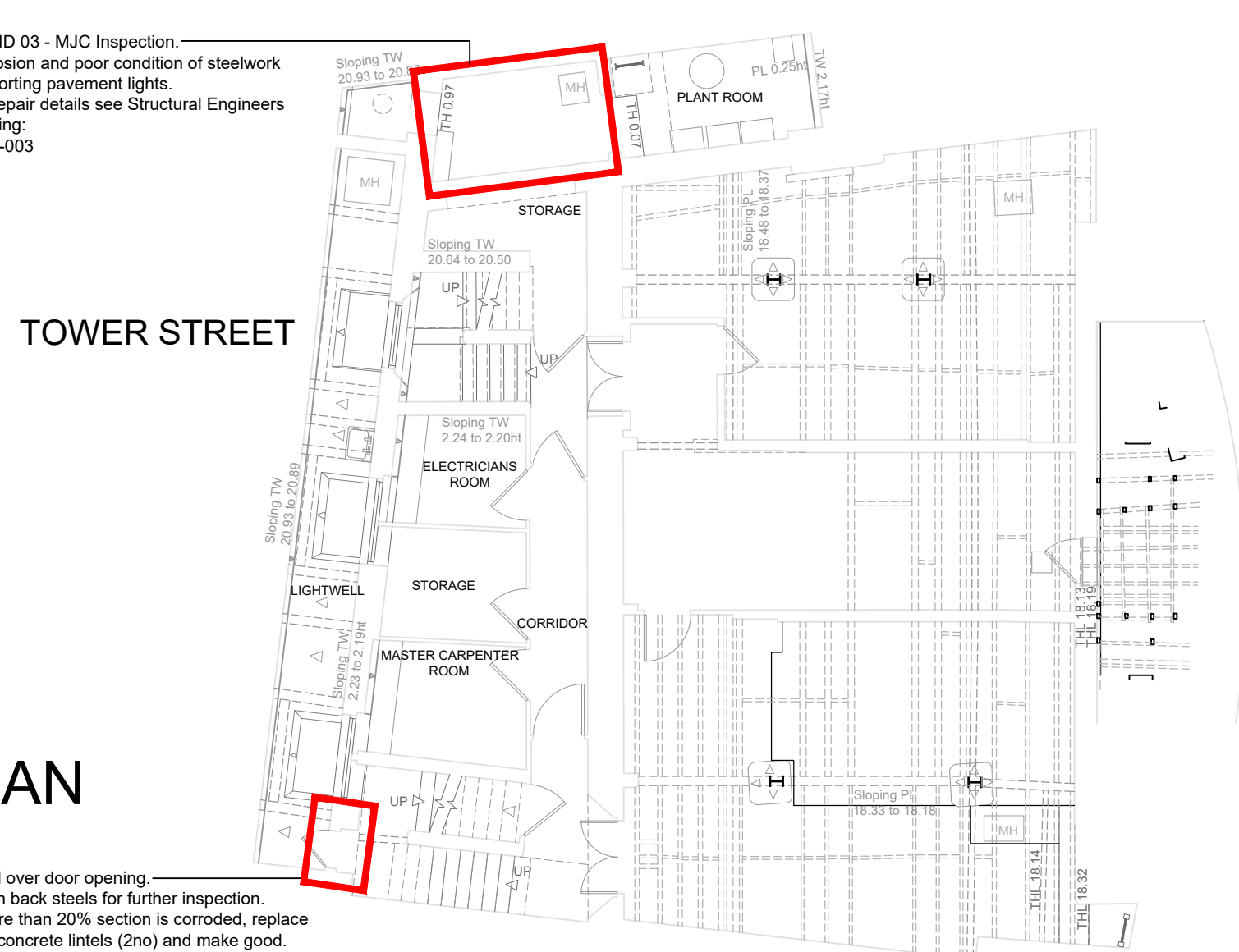
## GROUND FLOOR



## BASEMENT / STALLS



## SUB STAGE PLAN



## KEY

Red outlines indicate location of proposed works at each level.

REV B: 07/05/2025 Key added.  
REV A: 30/04/2025 Notes updated



OSBORNES CHARTERED ARCHITECTS

PO Box 395 • Malvern • Worcestershire • WR14 9LL  
T: 01684 311303 E: [architecture@osbornearchitects.com](mailto:architecture@osbornearchitects.com) W: [osbornearchitects.com](http://osbornearchitects.com)

DRAFT ☐ ISSUE ☒ TENDER ☐ CONTRACT ☐ RECORD ☐

PROJECT: AMBASSADOR THEATRE  
TITLE: GENERAL ARRANGEMENT - SUB STAGE TO ROOF

DRAWN AML DRAWING NUMBER 24-127 - GA2B