

RADA

16 Chenies Street.

Existing Doors Summary of Works.

Door 1.

Remove and dispose old door, repair and make good frame, replace door stops with new and measure existing opening in preparation for new made to measure fire door. Fit a new fire door with new hardware, Remove architrave to one side and fill gap between lining and structure with suitable fire stopping material. Reinstall architrave and decorate all frame, linings, stops and architraves on completion.



Door 2.

Remove and dispose old door, repair and make good frame, replace door stops with new and measure existing opening in preparation for new made to measure fire door. Fit a new fire door with new hardware, Remove architrave to one side and fill gap between lining and structure with suitable fire stopping material. Reinstall architrave and decorate all frame, linings, stops and architraves on completion.



Door 3.

Remove and dispose old door, repair and make good frame, replace door stops with new and measure existing opening in preparation for new made to measure fire door. Fit a new fire door with new hardware, Remove architrave to one side and fill gap between lining and structure with suitable fire stopping material. Reinstall architrave and decorate all frame, linings, stops and architraves on completion.



Door 4.

Remove and dispose old door, repair and make good frame, replace doorstops with new and measure existing opening in preparation for new made to measure fire door. Fit a new fire door with new hardware, remove architrave to one side and fill gap between lining and structure with suitable fire stopping material. Reinstall architrave and decorate all frame, linings, stops and architraves on completion.



Door 5.

Remove and dispose old door, repair and make good frame, replace doorstops with new and measure existing opening in preparation for new made to measure fire door. Fit a new fire door with new hardware, remove architrave to one side and fill gap between lining and structure with suitable fire stopping material. Reinstall architrave and decorate all frame, linings, stops and architraves on completion.



Door 6.

Remove and dispose old door, repair and make good frame, replace doorstops with new and measure existing opening in preparation for new made to measure fire door. Fit a new fire door with new hardware, remove architrave to one side and fill gap between lining and structure with suitable fire stopping material. Reinstall architrave and decorate all frame, linings, stops and architraves on completion.



Door 7.

Remove and dispose old door, repair and make good frame, replace doorstops with new and measure existing opening in preparation for new made to measure fire door. Fit a new fire door with new hardware, remove architrave to one side and fill gap between lining and structure with suitable fire stopping material. Reinstall architrave and decorate all frame, linings, stops and architraves on completion.



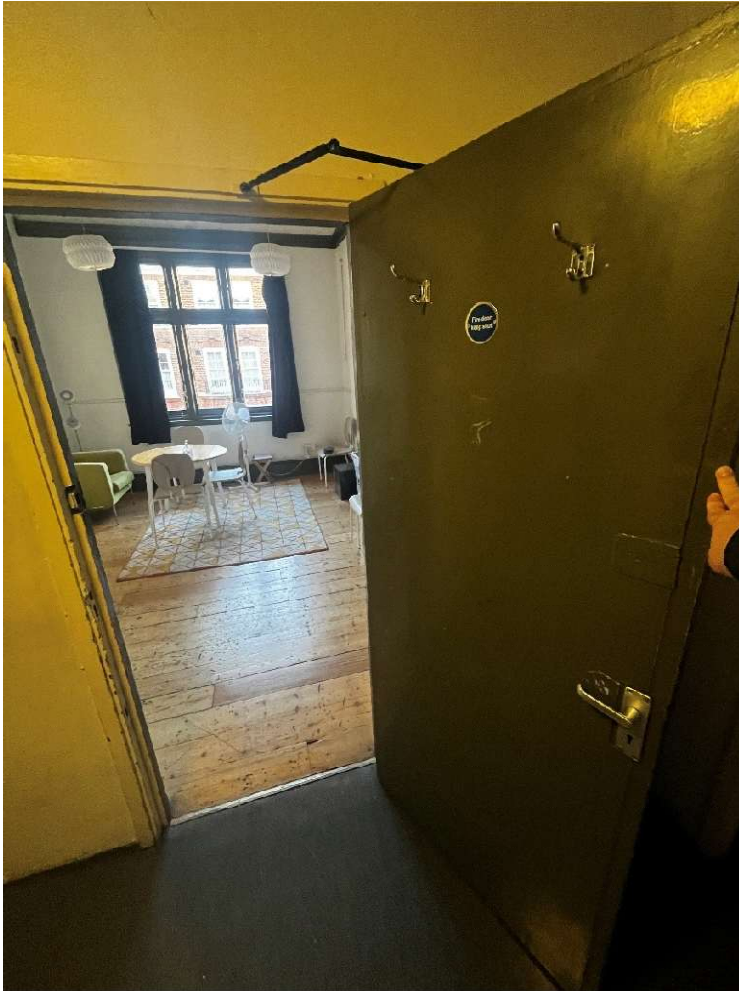
Door 8.

Remove and dispose old door, repair and make good frame, replace doorstops with new and measure existing opening in preparation for new made to measure fire door. Fit a new fire door with new hardware, remove architrave to one side and fill gap between lining and structure with suitable fire stopping material. Reinstall architrave and decorate all frame, linings, stops and architraves on completion.



Door 9.

Remove and dispose old door, repair and make good frame, replace doorstops with new and measure existing opening in preparation for new made to measure fire door. Fit a new fire door with new hardware, remove architrave to one side and fill gap between lining and structure with suitable fire stopping material. Reinstall architrave and decorate all frame, linings, stops and architraves on completion.



Door 10.

Remove and dispose old door, repair and make good frame, replace doorstops with new and measure existing opening in preparation for new made to measure fire door. Fit a new fire door with new hardware, remove architrave to one side and fill gap between lining and structure with suitable fire stopping material. Reinstall architrave and decorate all frame, linings, stops and architraves on completion.



Door 11.

Remove and dispose old door, repair and make good frame, replace doorstops with new and measure existing opening in preparation for new made to measure fire door. Fit a new fire door with new hardware, remove architrave to one side and fill gap between lining and structure with suitable fire stopping material. Reinstall architrave and decorate all frame, linings, stops and architraves on completion.



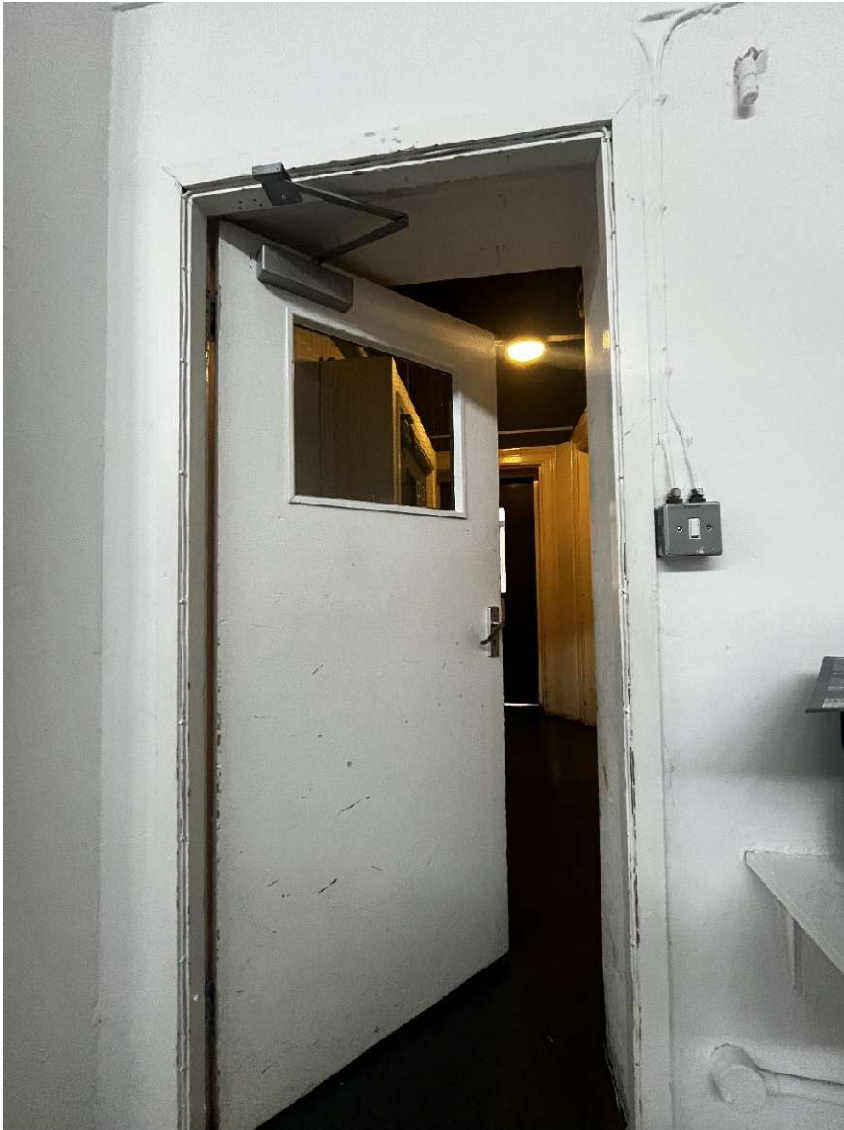
Door 12.

Remove and dispose old door, repair and make good frame, replace doorstops with new and measure existing opening in preparation for new made to measure fire door. Fit a new fire door with new hardware, remove architrave to one side and fill gap between lining and structure with suitable fire stopping material. Reinstall architrave and decorate all frame, linings, stops and architraves on completion.



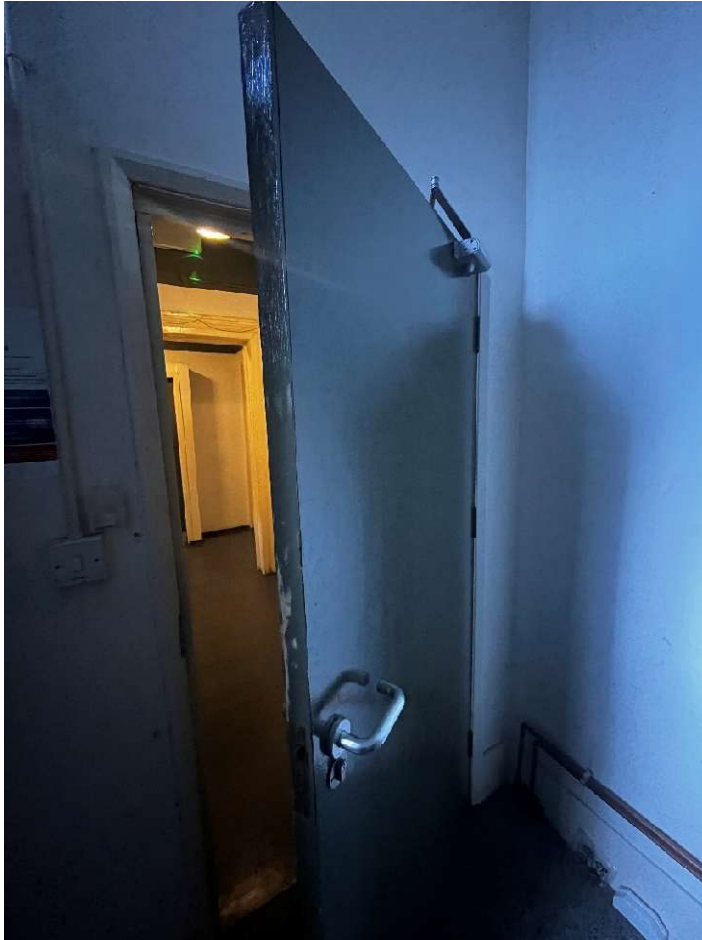
Door 13.

Remove and dispose old door, repair and make good frame, replace doorstops with new and measure existing opening in preparation for new made to measure fire door. Fit a new fire door with new hardware, remove architrave to one side and fill gap between lining and structure with suitable fire stopping material. Reinstall architrave and decorate all frame, linings, stops and architraves on completion.



Door 14.

Remove and dispose old door, repair and make good frame, replace doorstops with new and measure existing opening in preparation for new made to measure fire door. Fit a new fire door with new hardware, remove architrave to one side and fill gap between lining and structure with suitable fire stopping material. Reinstall architrave and decorate all frame, linings, stops and architraves on completion.



Door 15.

Carry out intumescent paint/paper upgrade works to door in accordance with English Heritage Guidance, allow for rubbing back paint finish applying hardwood fillet to sides of door to square up and fit frame correctly. All works to satisfy the fire engineer to be consultant on the works, repair and make good frame.



Door 16.

Remove and dispose old door, repair and make good frame, replace doorstops with new and measure existing opening in preparation for new made to measure fire door. Fit a new fire door with new hardware, remove architrave to one side and fill gap between lining and structure with suitable fire stopping material. Reinstall architrave and decorate all frame, linings, stops and architraves on completion.



Door 17.

Remove and dispose old door, repair and make good frame, replace door stops with new and measure existing opening in preparation for new made to measure fire door. Fit a new fire door with new hardware, Remove architrave to one side and fill gap between lining and structure with suitable fire stopping material. Reinstall architrave and decorate all frame, linings, stops and architraves on completion.



Door 18.

Remove and dispose old door, repair and make good frame, replace doorstops with new and measure existing opening in preparation for new made to measure fire door. Fit a new fire door with new hardware, remove architrave to one side and fill gap between lining and structure with suitable fire stopping material. Reinstall architrave and decorate all frame, linings, stops and architraves on completion.



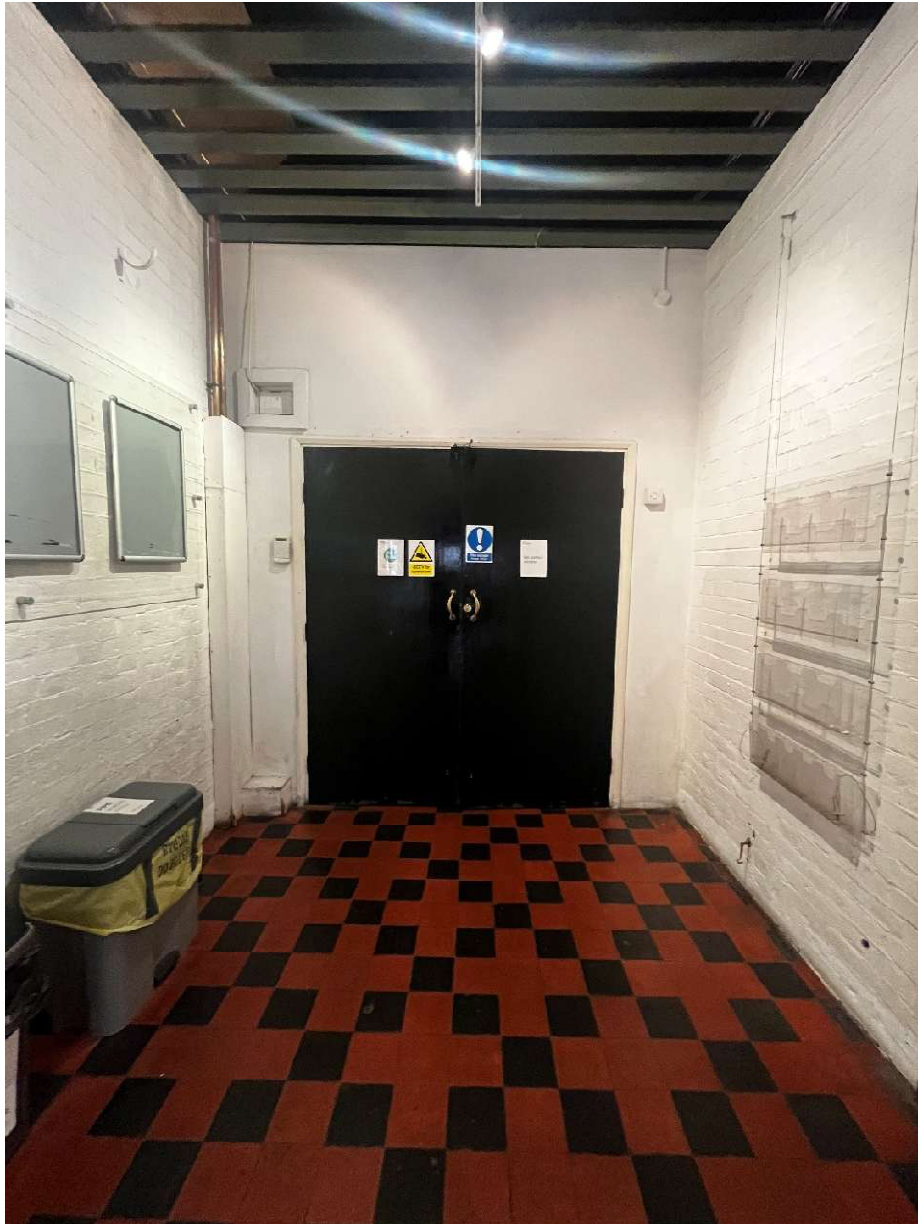
Door 19.

Remove and dispose old door, repair and make good frame, replace doorstops with new and measure existing opening in preparation for new made to measure fire door. Fit a new fire door with new hardware, remove architrave to one side and fill gap between lining and structure with suitable fire stopping material. Reinstall architrave and decorate all frame, linings, stops and architraves on completion.



Door 20.

Remove and dispose old doors, repair and make good frame, replace doorstops with new and measure existing opening in preparation for new made to measure fire door. Fit a new fire door with new hardware, remove architrave to one side and fill gap between lining and structure with suitable fire stopping material. Reinstall architrave and decorate all frame, linings, stops and architraves on completion.



Door 21.

Remove and dispose old door, repair and make good frame, replace doorstops with new and measure existing opening in preparation for new made to measure fire door. Fit a new fire door with new hardware, remove architrave to one side and fill gap between lining and structure with suitable fire stopping material. Reinstall architrave and decorate all frame, linings, stops and architraves on completion.



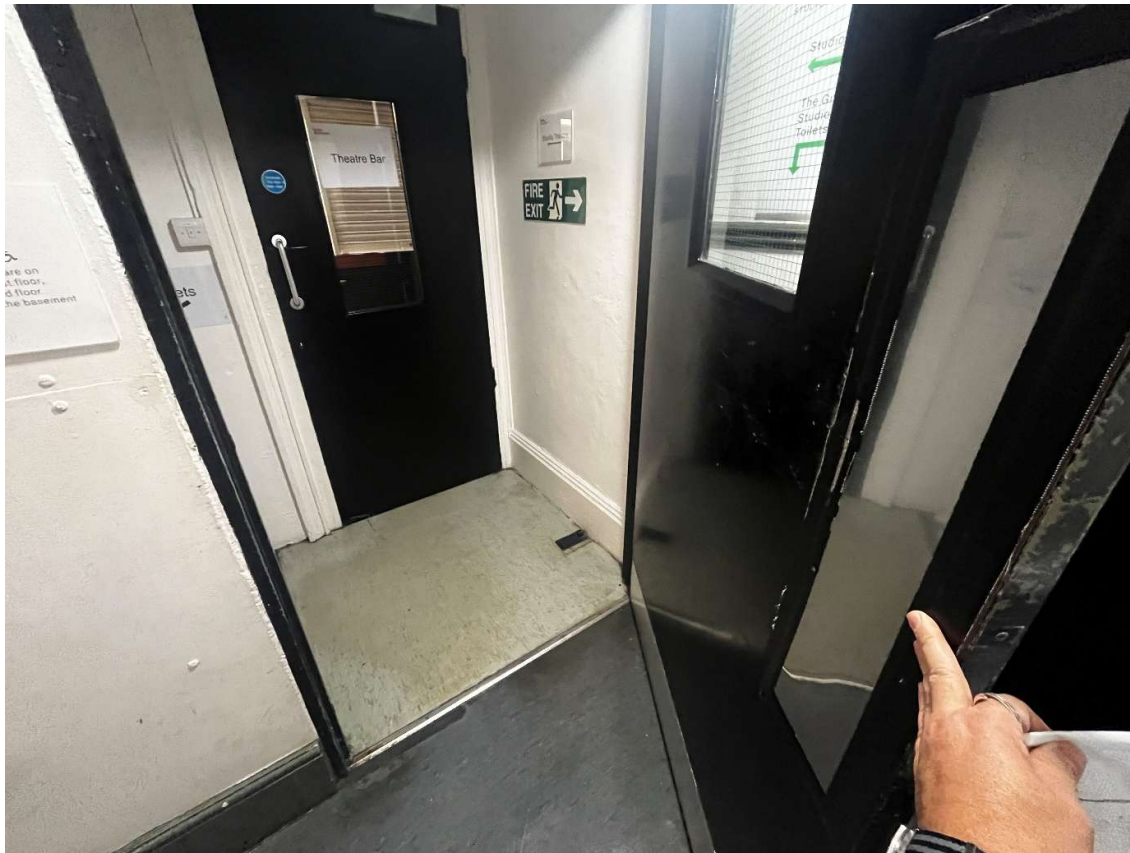
Door 22.

Remove and dispose old door, repair and make good frame, replace doorstops with new and measure existing opening in preparation for new made to measure fire door. Fit a new fire door with new hardware, remove architrave to one side and fill gap between lining and structure with suitable fire stopping material. Reinstall architrave and decorate all frame, linings, stops and architraves on completion.



Door 23.

Remove and dispose old door, repair and make good frame, replace doorstops with new and measure existing opening in preparation for new made to measure fire door. Fit a new fire door with new hardware, remove architrave to one side and fill gap between lining and structure with suitable fire stopping material. Reinstall architrave and decorate all frame, linings, stops and architraves on completion.



Door 24.

Remove and dispose old door, repair and make good frame, replace doorstops with new and measure existing opening in preparation for new made to measure fire door. Fit a new fire door with new hardware, remove architrave to one side and fill gap between lining and structure with suitable fire stopping material. Reinstall architrave and decorate all frame, linings, stops and architraves on completion.



Door 25.

New Doorset - Supply and fit new emergency escape push bar assembly



Door 26.

New Doorset - Supply and fit new emergency escape push bar assembly



Door 27.

Remove and dispose old door, repair and make good frame, replace doorstops with new and measure existing opening in preparation for new made to measure fire door. Fit a new arch top fire door with new hardware, remove architrave to one side and fill gap between lining and structure with suitable fire stopping material. Decorate all frame, linings, stops and architraves on completion.



Door 28.

Remove and dispose old door, repair and make good frame, replace doorstops with new and measure existing opening in preparation for new made to measure fire door. Fit a new arch top fire door with new hardware, remove architrave to one side and fill gap between lining and structure with suitable fire stopping material. Decorate all frame, linings, stops and architraves on completion.



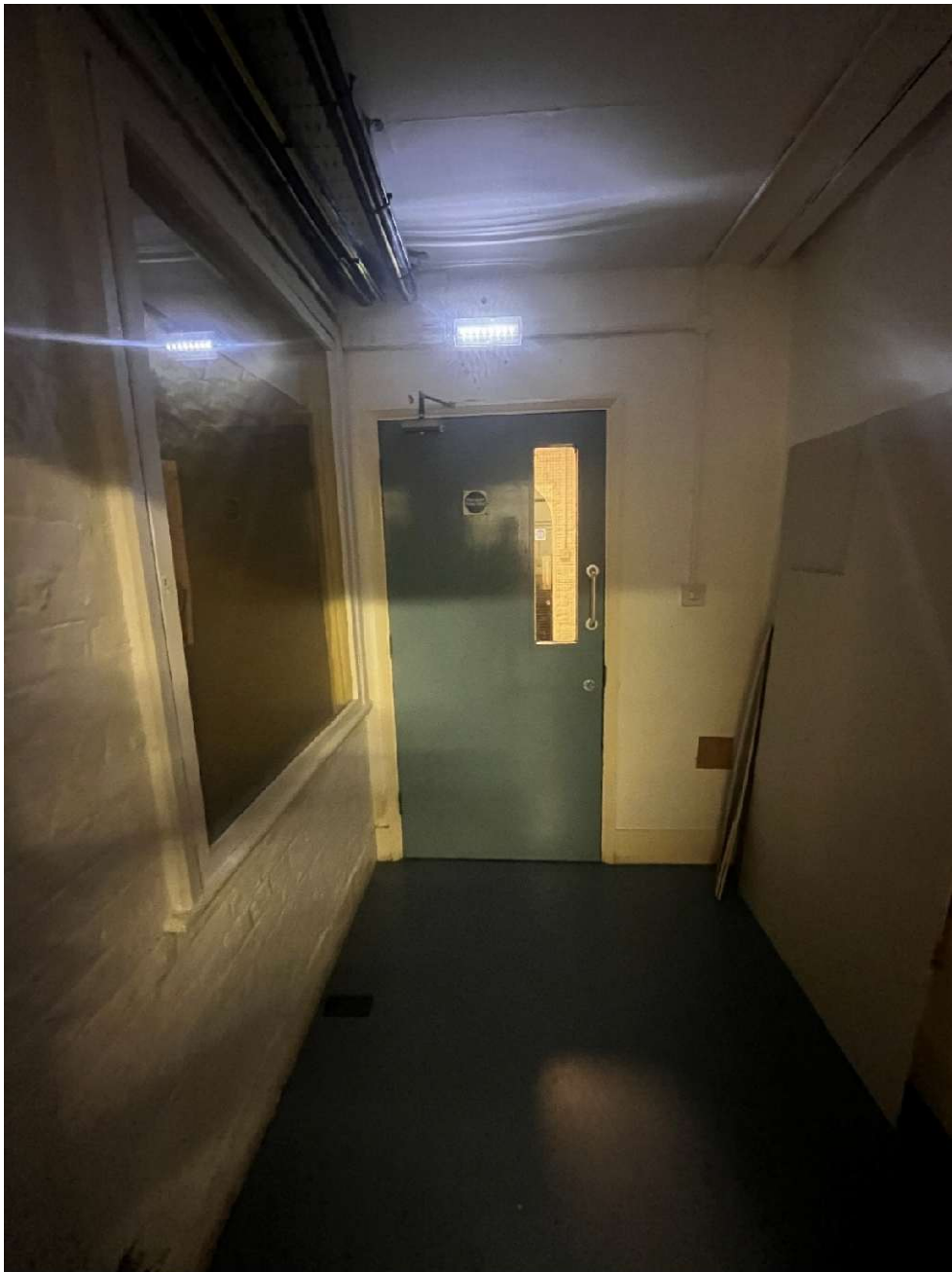
Door 29.

Remove and dispose old door, repair and make good frame, replace doorstops with new and measure existing opening in preparation for new made to measure fire door. Fit a new arch top fire door with new hardware, remove architrave to one side and fill gap between lining and structure with suitable fire stopping material. Decorate all frame, linings, stops and architraves on completion.



Door 30.

Remove and dispose old door and frame, Fit a new fire doorset with new hardware and architraves, All factory paint finished



Door 31.

Remove and dispose old door and frame, Fit a new fire doorset with new hardware and architraves, All factory paint finished



Door 32.

Remove and dispose old door and frame, Fit a new fire doorset with new hardware and architraves, All factory paint finished



Door 33.

Decorate existing fire door. Check and report on compliance



Door 34.

Remove and dispose old door and frame, Fit a new fire doorset with new hardware and architraves, All factory paint finished



Door 35.

Remove and dispose old door and frame, Fit a new fire doorset with new hardware and architraves, All factory paint finished



Door 36.

Remove and dispose old door and frame, Fit a new fire doorset with new hardware and architraves, All factory paint finished



Door 37.

Remove and dispose old door and frame, Fit a new fire doorset with new hardware and architraves, All factory paint finished



Door 38.

Decorate existing flush fire door. Check and report on compliance.



Door 39.

Remove and dispose old door and frame, Fit a new fire doorset with new hardware and architraves, All factory paint finished



Door 40.

Remove and dispose old door and frame, Fit a new fire doorset with new hardware and architraves, All factory paint finished



Door 41.

Remove and dispose old door and frame, Fit a new fire doorset with new hardware and architraves, All factory paint finished



Door 42.

Remove and dispose old door and frame, Fit a new fire doorset with new hardware and architraves, All factory paint finished



Door 43.

Remove and dispose old door and frame, Fit a new fire doorset with new hardware and architraves, All factory paint finished



Door 53.

Remove and dispose old door and frame, Fit a new fire doorset with new hardware and architraves, All factory paint finished.

