



www.MEGAPLAN.co.uk +44 (0) 2037303151 12 Old Bond Street London W1S 4PW

28th March, 2025
London, UK

Camden Planning Department
London Borough of Camden 2nd Floor,
5 Pancras Square c/o Town Hall, Judd Street
London
WC1H 9JE

5 LEVERTON STREET, LONDON, NW5 2PH

Photographic Evidence: Site Photographs.

1. Front and rear elevations.





www.MEGAPLAN.co.uk +44 (0) 2037303151 12 Old Bond Street London W1S 4PW

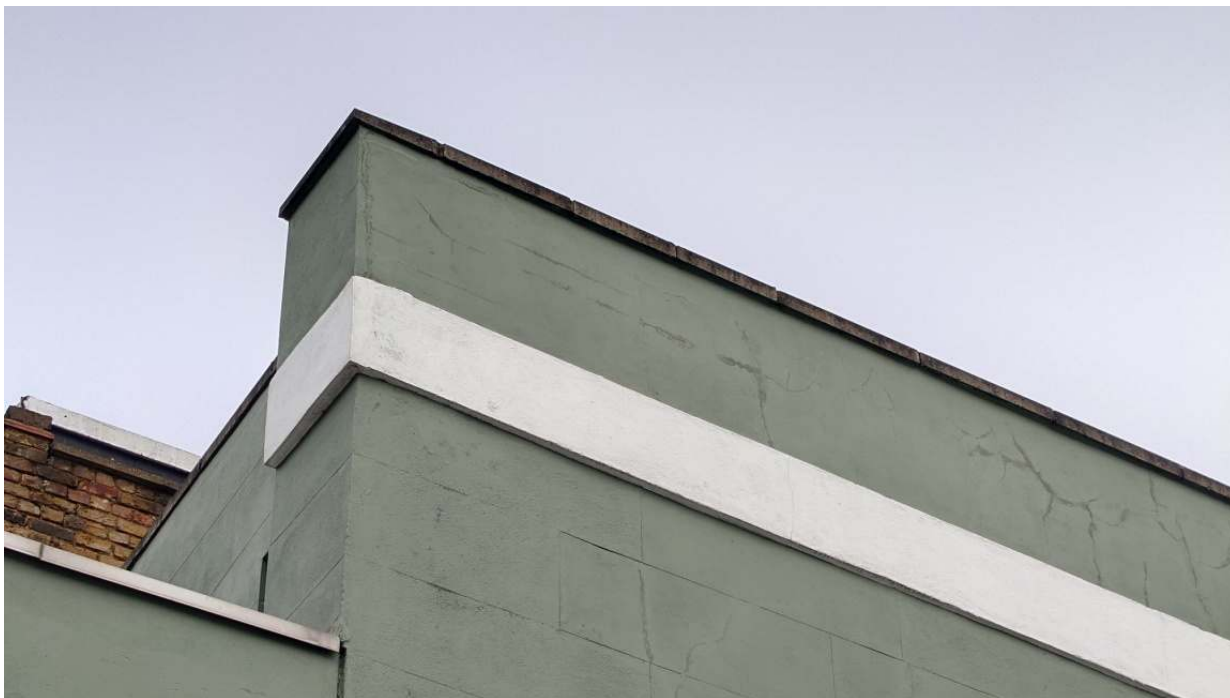
2. Side elevation





www.MEGAPLAN.co.uk +44 (0) 2037303151 12 Old Bond Street London W1S 4PW

3. Plaster issues:





4. Internal damp and moisture affecting plaster.



5. Roof party wall : Bricks crack due to leakage and dampness

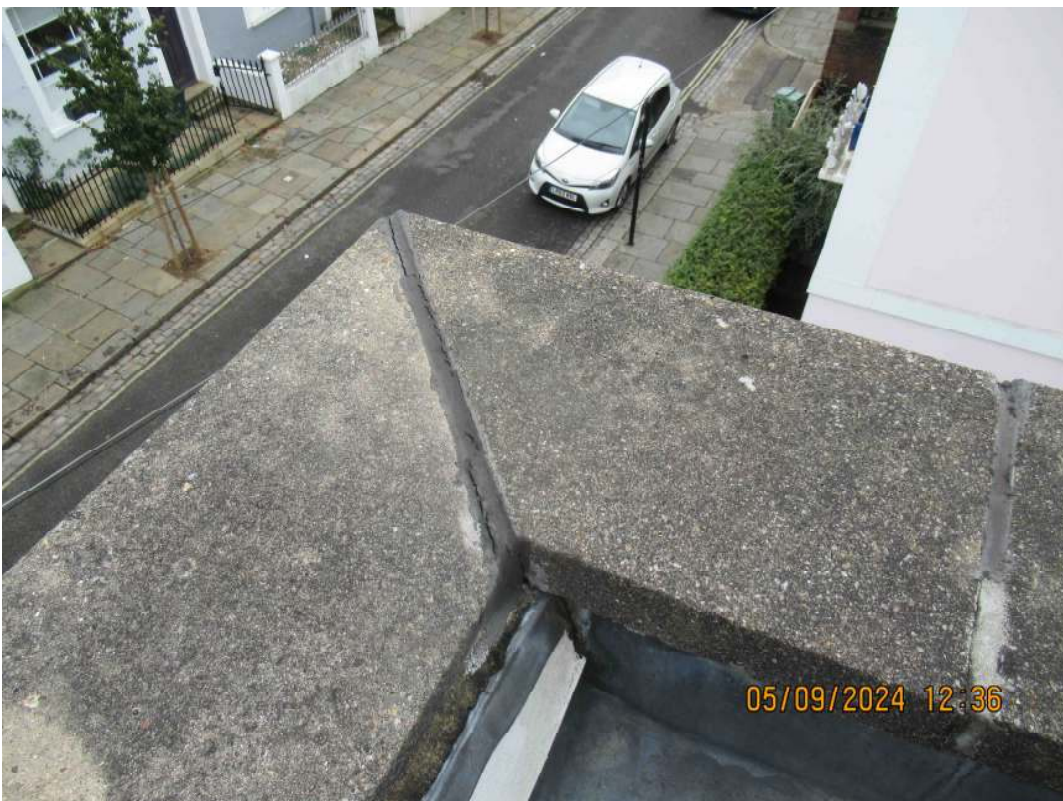




6. Rotted rafters, caused by dampness and leaks,



7. Coping stones' cracks





8. Coping stone under view: no DPC installed causing moisture and damp penetration.



9. Exterior cracks/ water ingress in structure and foundations.



Megaplan, 2025.