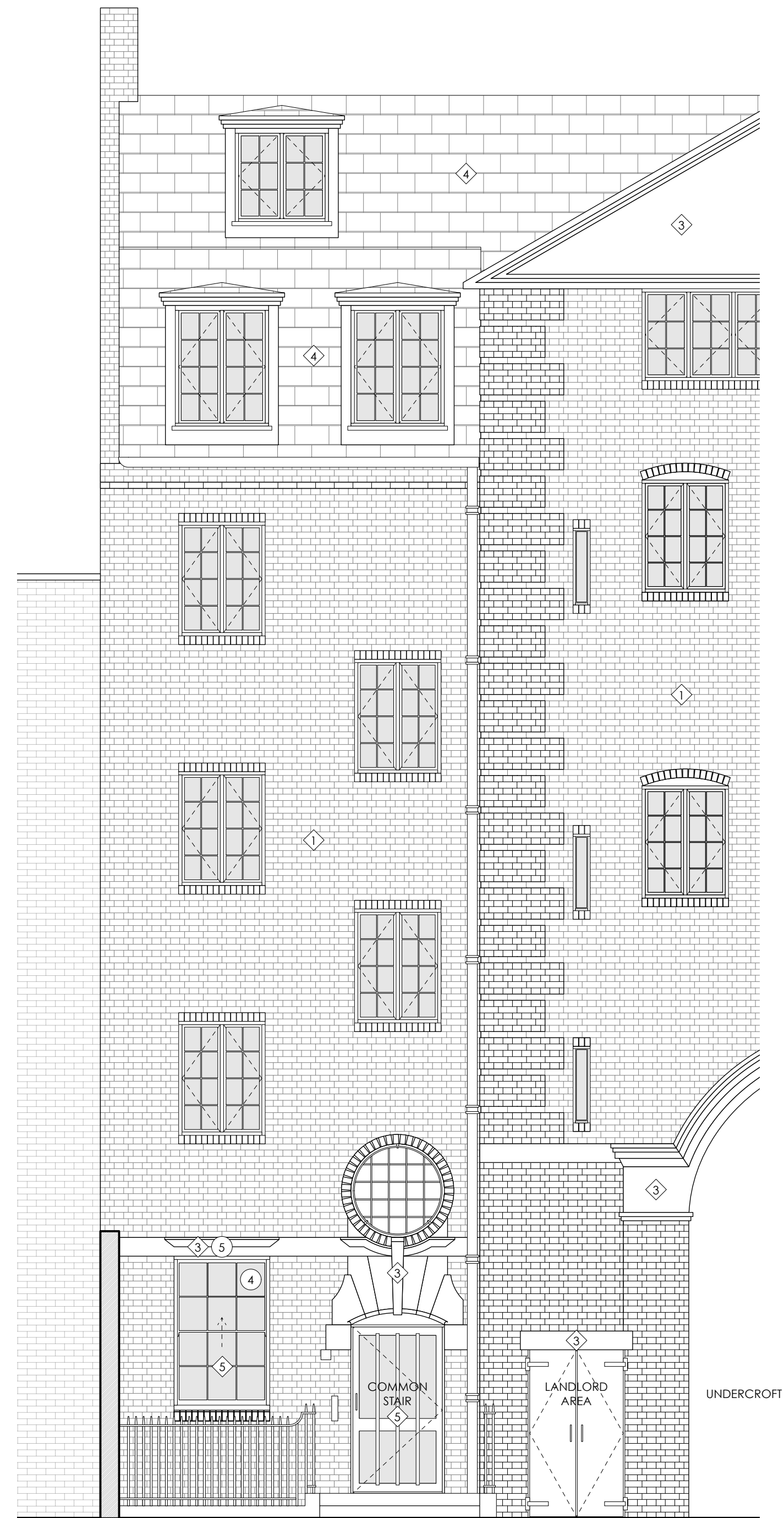


1 PROPOSED ELEVATION - CLERKENWELL ROAD  
1:50

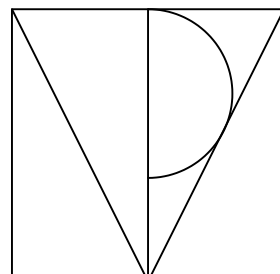


2 PROPOSED ELEVATION - REAR  
1:50

SCOPE OF WORKS - PROPOSED

- 1 REPAIR, REFURBISH & REGLAZE EXISTING TIMBER WINDOW & FANLIGHT
- 2 REPLACE EXISTING ALUMINIUM DOOR WITH ALUMINIUM FRAMED DOOR
- 3 REMOVE FLOORING TO ENABLE NEW CIRCULATION STAIR.
- 4 INSTALL NEW TIMBER STAIR.
- 5 REPLACE DAMAGED PANES OF GLASS.
- 6 REPAIRS TO WINDOW LINTEL (INTERNAL). REF. SHEETS P401 & P402. FOLLOW INSTRUCTIONS FROM SPECIALIST.

0 1 3 5 M



TPM Studio  
Canonbury Yard  
New North Road  
London N1 7BJ  
  
+44 (0) 20 3773 3374  
info@tpm-studio.co.uk  
www.tpm-studio.co.uk

MATERIAL LEGEND	
1	BRICK
2	GLAZED BRICK
3	STUCCO RENDER
4	SLATE TILES
5	TIMBER FRAMED WINDOWS/DOORS
6	ALUMINIUM FRAMED WINDOWS/DOORS

REVISION NOTES:	
0	29/01/2025 ISSUED FOR PLANNING
1	22/04/2025 MATERIALS UPDATED AS BUBBLED

GENERAL NOTES:	
1.	ALL DIMENSIONS IN MM UNLESS OTHERWISE STATED
2.	ALL DIMENSIONS TO BE CHECKED ON SITE BY THE CONTRACTOR
3.	DO NOT SCALE FROM THIS DRAWING
4.	TO BE READ IN CONJUNCTION WITH RELEVANT CONTRACT DRAWINGS
5.	TO BE READ IN CONJUNCTION WITH RELEVANT ENGINEERS DRAWINGS
6.	REPORT ANY ERRORS, OMISSIONS AND DISCREPANCIES TO THE ARCHITECT

Project Title:	123 CLERKENWELL ROAD
Project Ref:	1207
Status:	PLANNING
Scale:	AS NOTED / A1
Sheet Title:	ELEVATIONS - PROPOSED
Sheet Ref:	P303 / 1