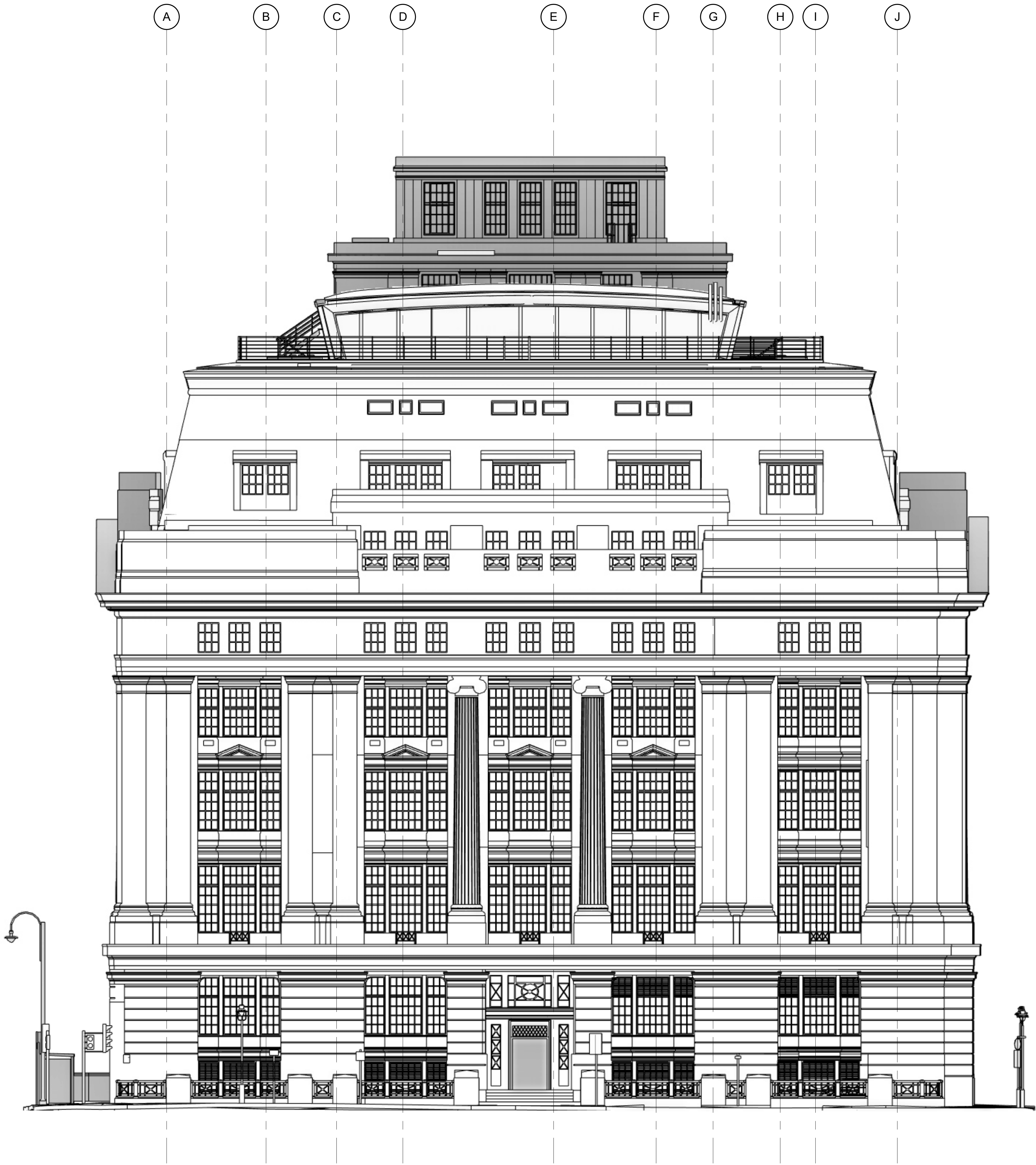


- EXISTING NOTES
- ALL SERVICES SHOWN ON THIS DRAWING ARE INCLUDED FOR SCALE. SPATIAL CONTEXT & COORDINATION ONLY. PLEASE REFER TO INDIVIDUAL CONSULTANTS INFORMATION FOR DETAILS.
 - THE PURPOSE OF THIS DRAWING AND IT'S RELEVANT PACKAGE IS FOR STAGE 4 INFORMATION ONLY.
 - DO NOT SCALE DRAWING. USE FIGURED DIMENSIONS ONLY.
 - ALL DIMENSIONS ARE IN MILLIMETERS.
 - EXISTING DRAWINGS ARE BASED ON A DIGITAL SURVEY, ANY DESCREPANCIES IDENTIED ON SITE TO BE REPORTED TO THE ARCHITECT.



0263 - Existing Elevation - Bloomsbury Place

1:100



The copyright of this drawing is vested with Corstorphine & Wright Ltd and must not be copied or reproduced without the consent of the company.

001 Issue for Construction 20.10.2023 MN LD
Rev. Description Date Dwg. CHK.

Client:
Oxford Victoria House Ltd.

Project:
Victoria House

Drawing Title:
Elevation - Existing - (Bloomsbury Place)

Suitability:
CONSTRUCTION

Corstorphine & Wright

London Studio
21/27 Lamb's Conduit Street, Holborn, London, WC1N 3NL
020 7464 9500

corstorphine-wright.com

Drawing No.

VTH-CWA-ZZ-ZZ-DR-A-0263

Drawn

DL

Checked

ML

Paper Size

A0

Scale

As Indicated

Status

S4

Revision

C01

Date

21/12/2022