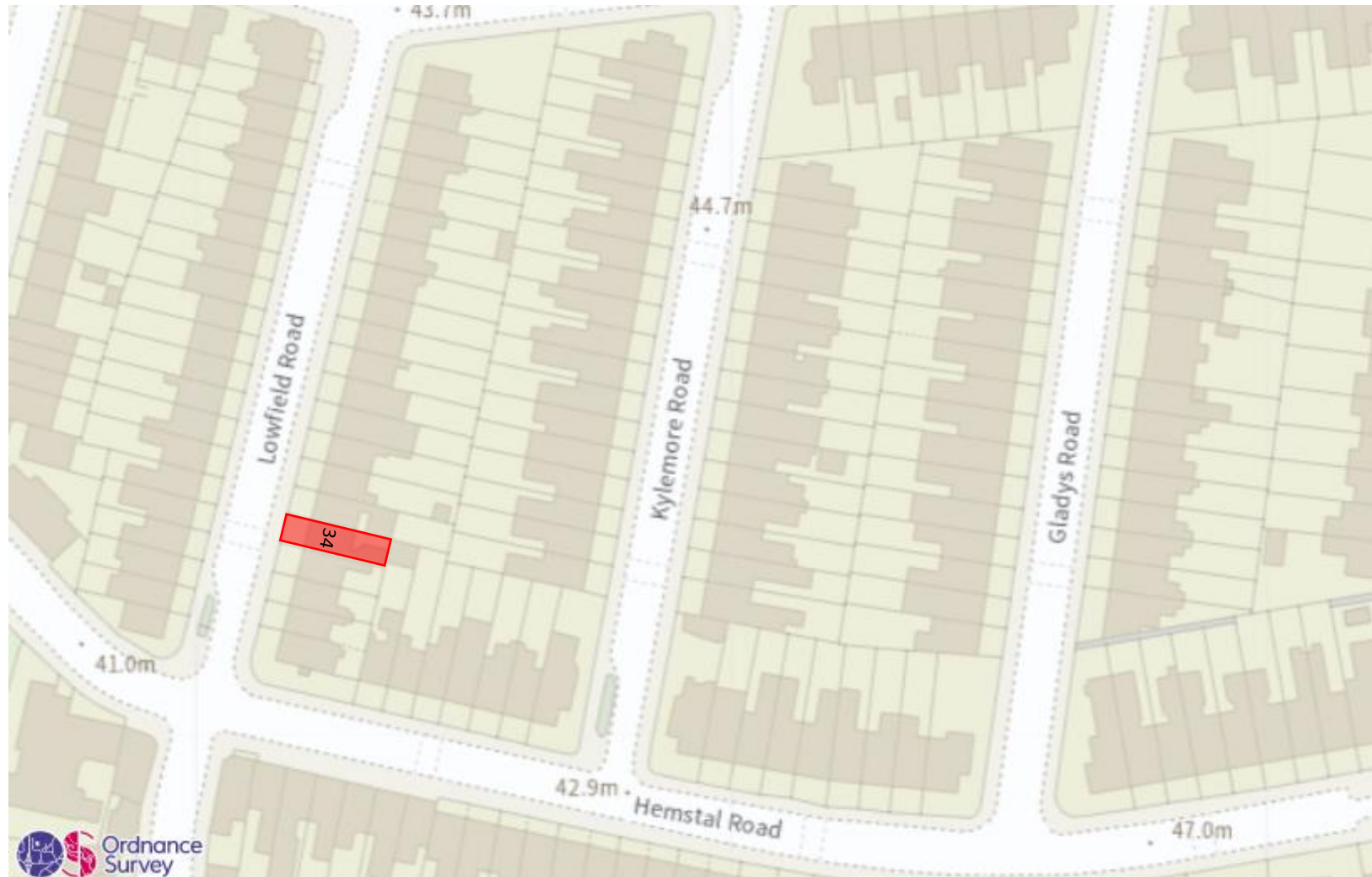


DRAFT



Rear elevation from Kylemore Road



No. 34 rear elevation



View north towards Kylemore Road



**No. 34 closet wings**  
The original two storey closet wing still remains, with an extension at lower ground floor level constructed in the 1970s when the house was converted into 2 flats.



**Flat A garden**  
The Flat A garden space has been adversely impacted by the construction of a 3.1m high wall to the north (No.32 extension, planning ref. 2015/3567/P) and the c.2m high wall to the east- the garden room at No. 50 Hemstal Road (permitted development?). As a result, Flat A's amenity space is very poor quality, with a subterranean feel due to extent of enclosure on all sides. It is also almost permanently in the shade.





Irregular / piecemeal development of closet wings over time.

No overriding pattern- varying depths and widths over one to three storeys in height.

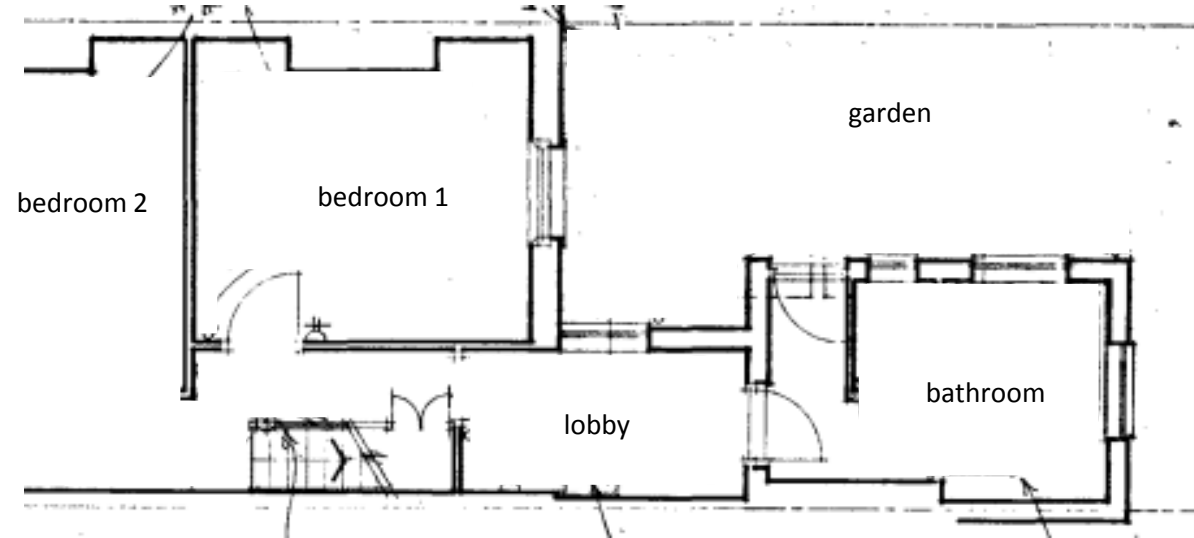
The largest extensions, at nos. 26 & 28 Lowfield Road, rise to three stories and measure approximately 3.7m deep and 2.1m wide.

1m

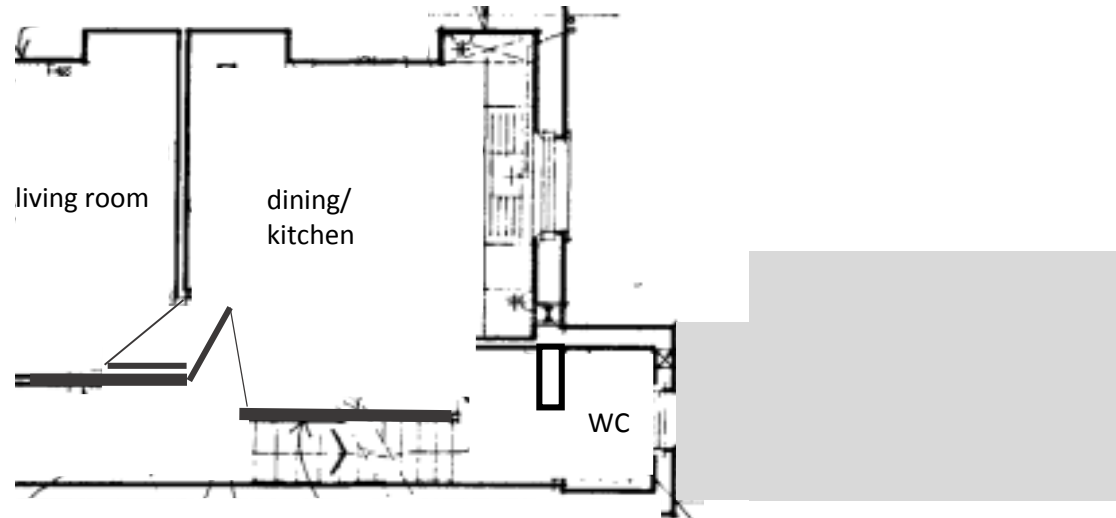
10m



Lower  
ground



Upper  
ground

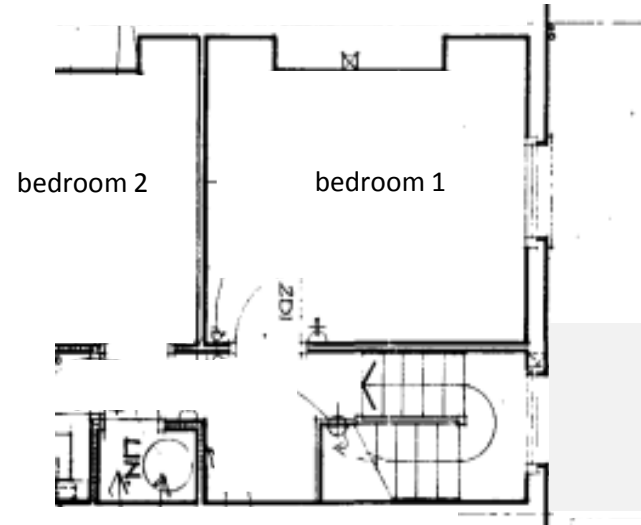


1m

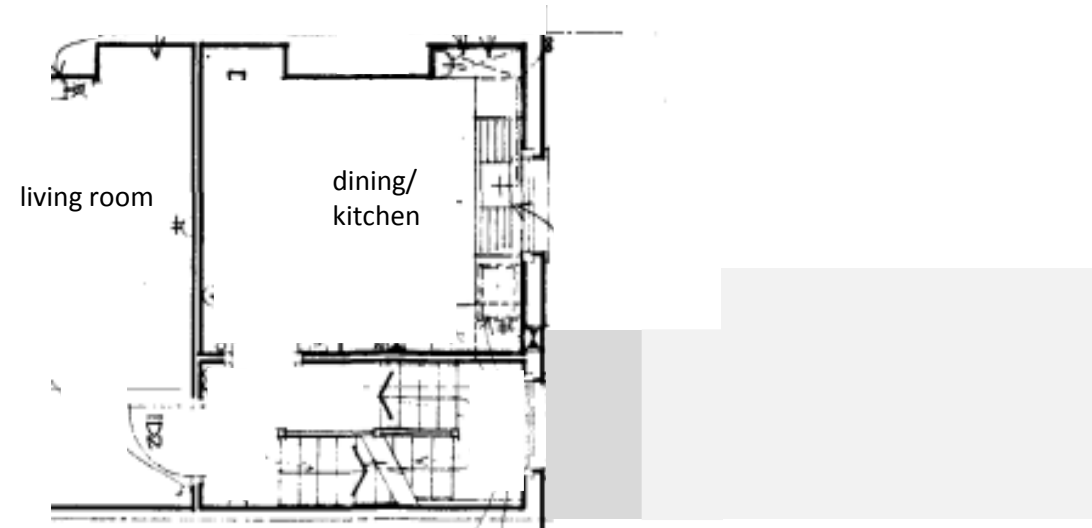
10m



Second  
floor



First  
floor

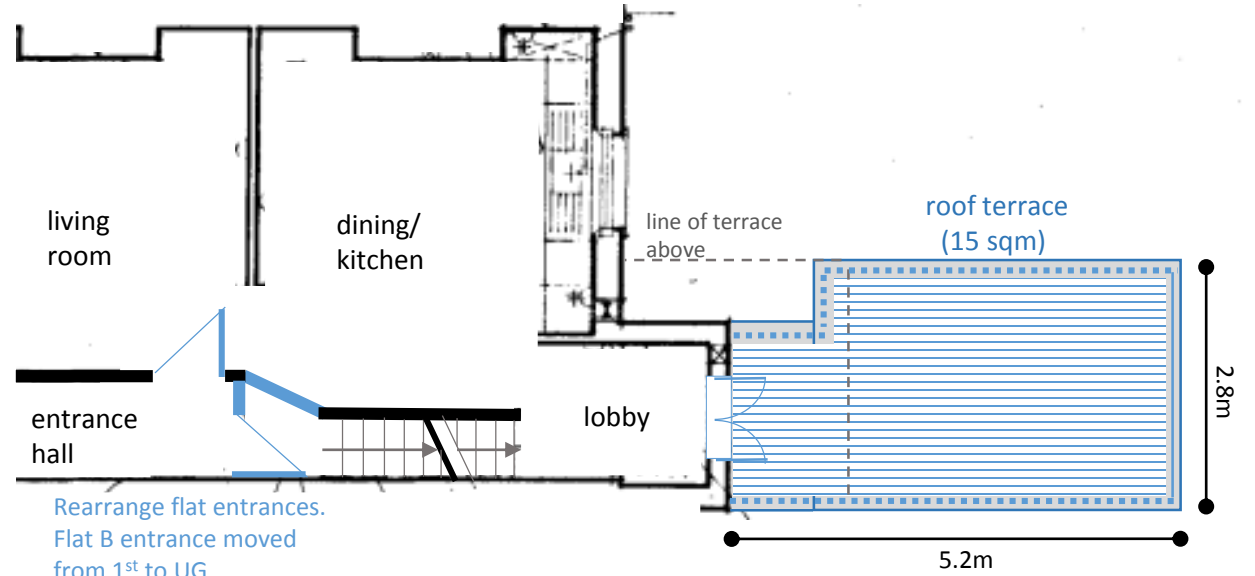


1m

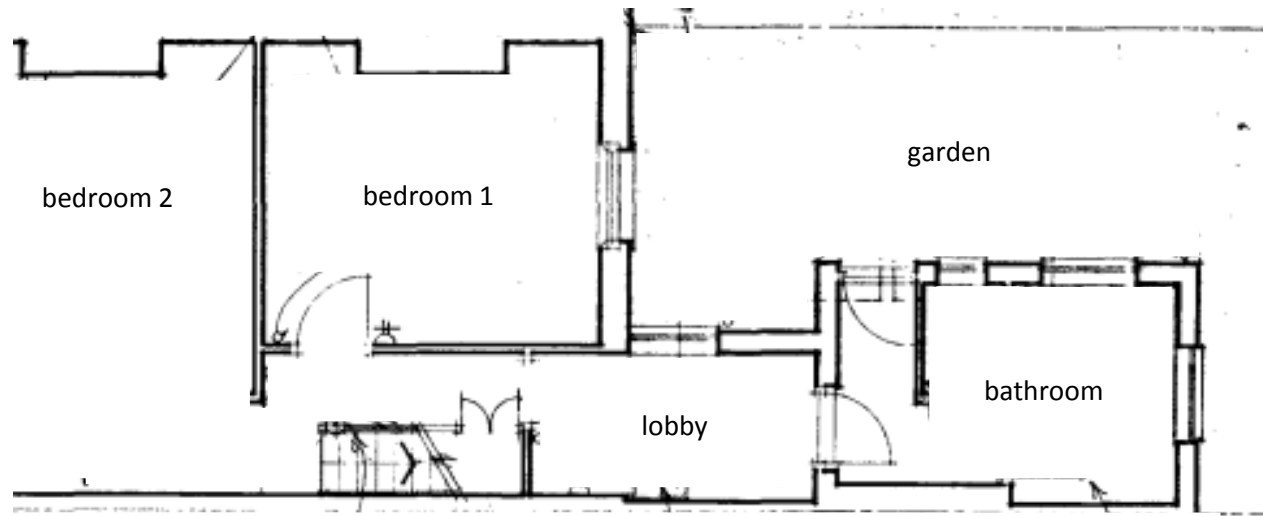
10m



Upper  
ground



Lower  
ground

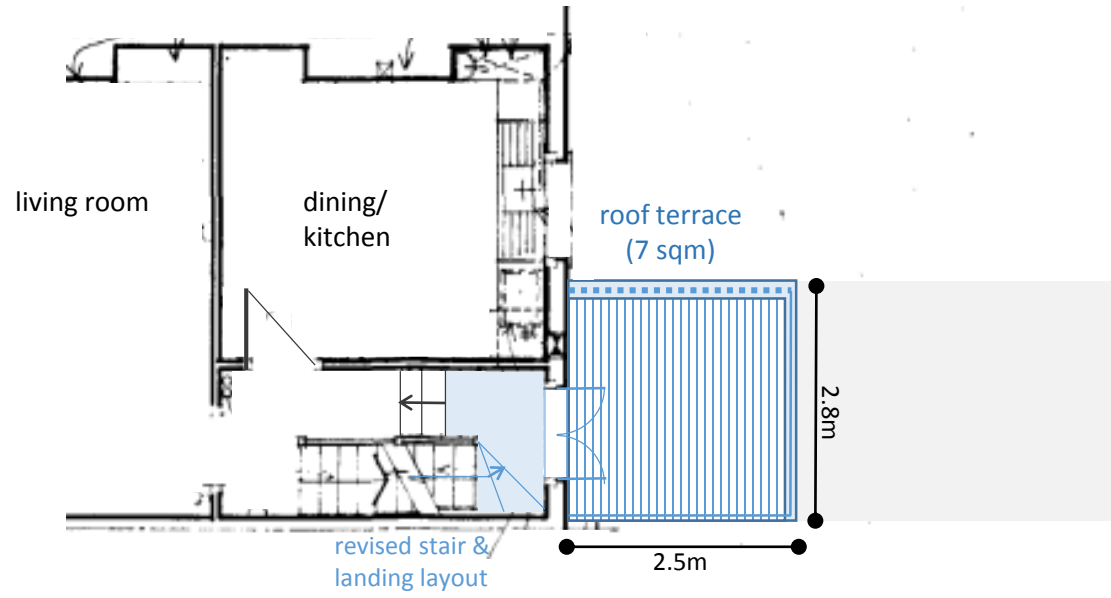


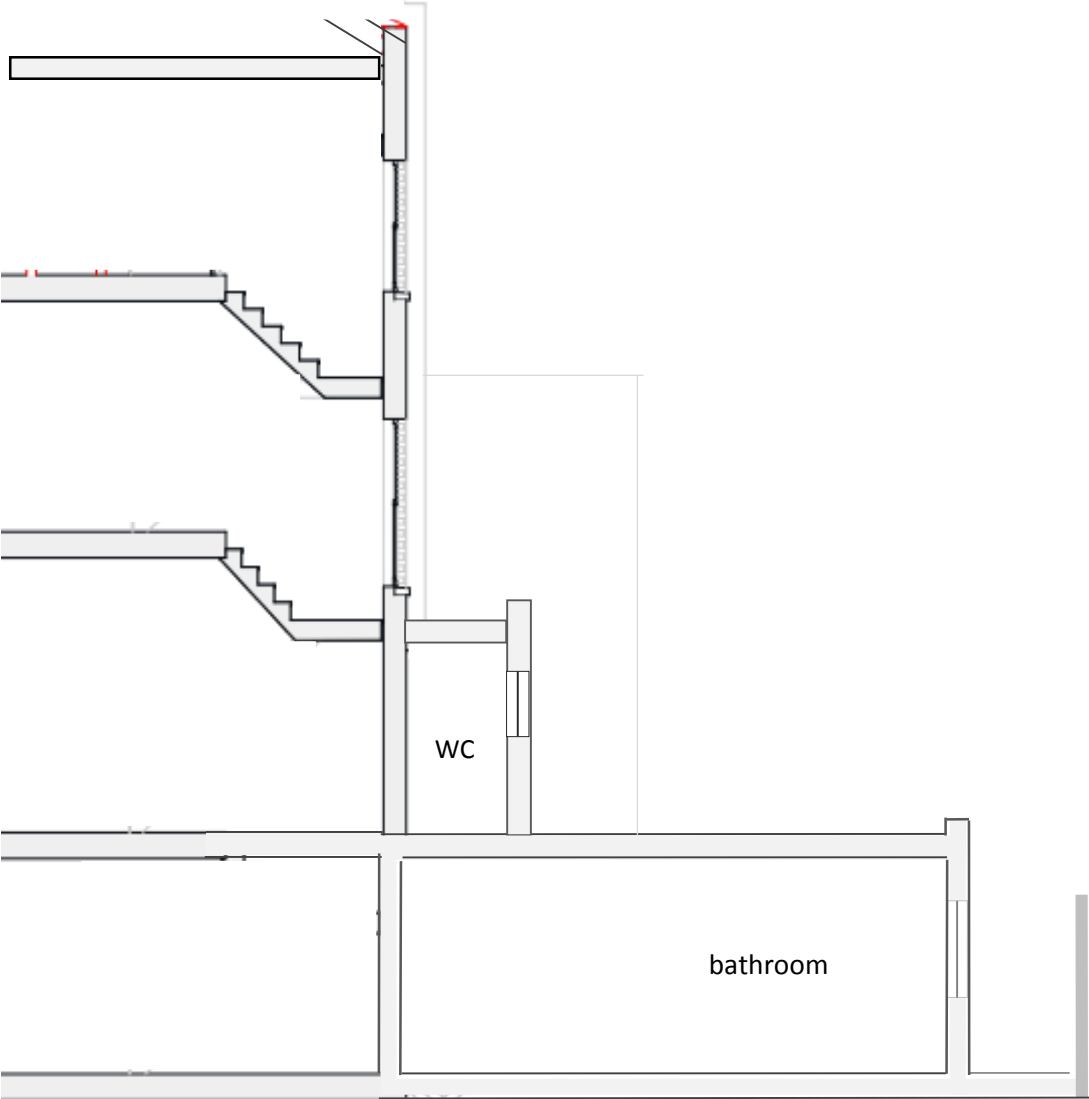


Second  
floor

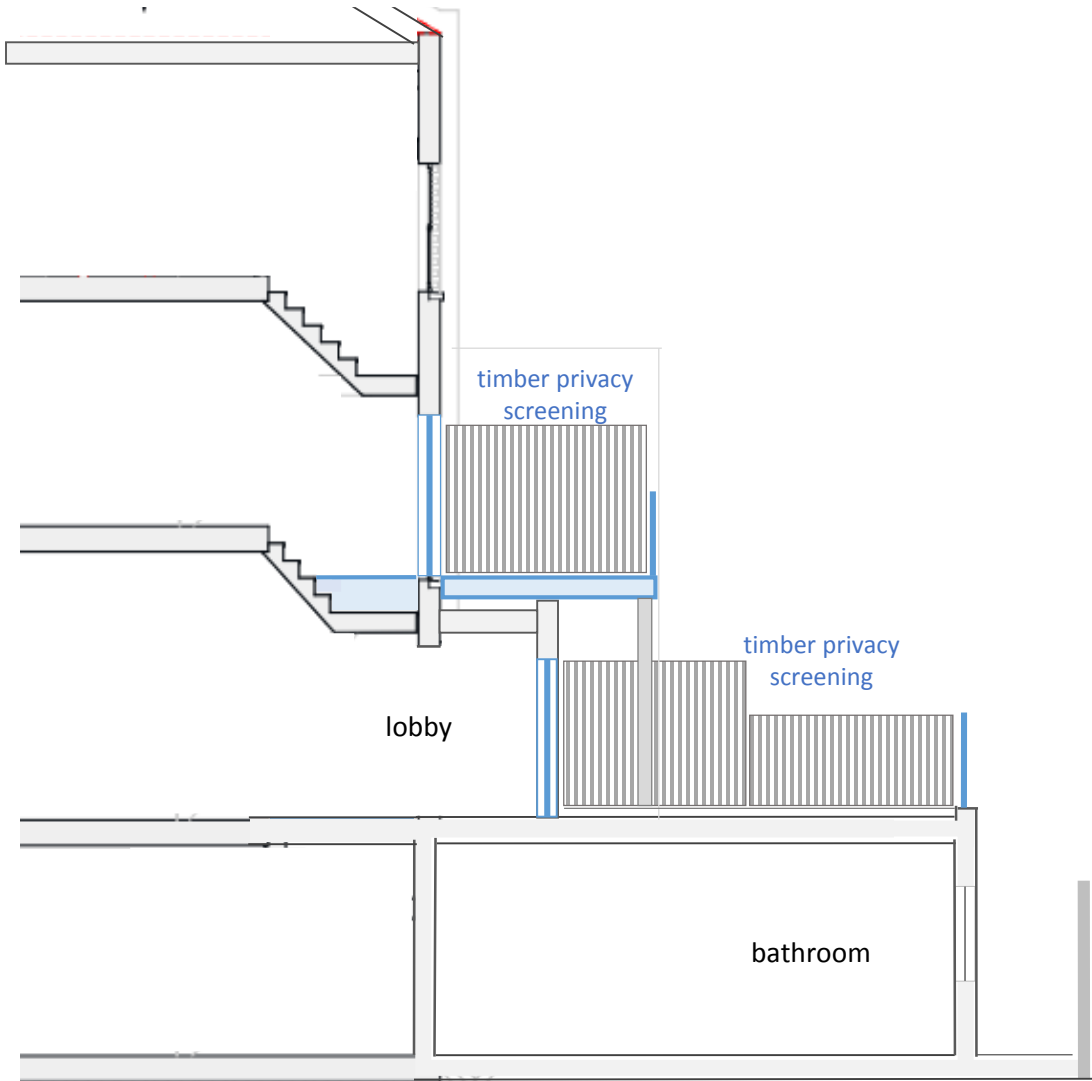


First  
floor





Existing

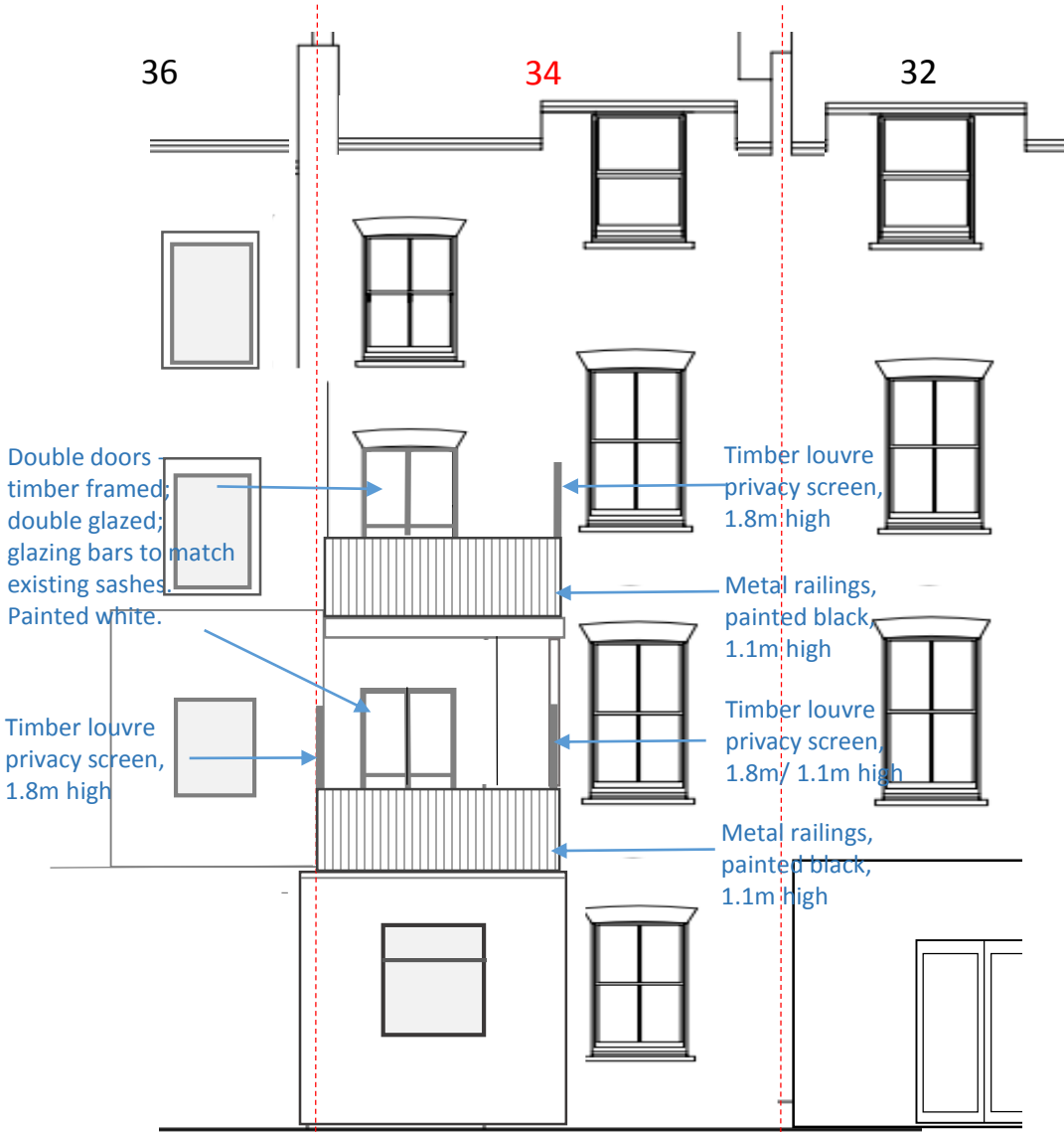


Proposed

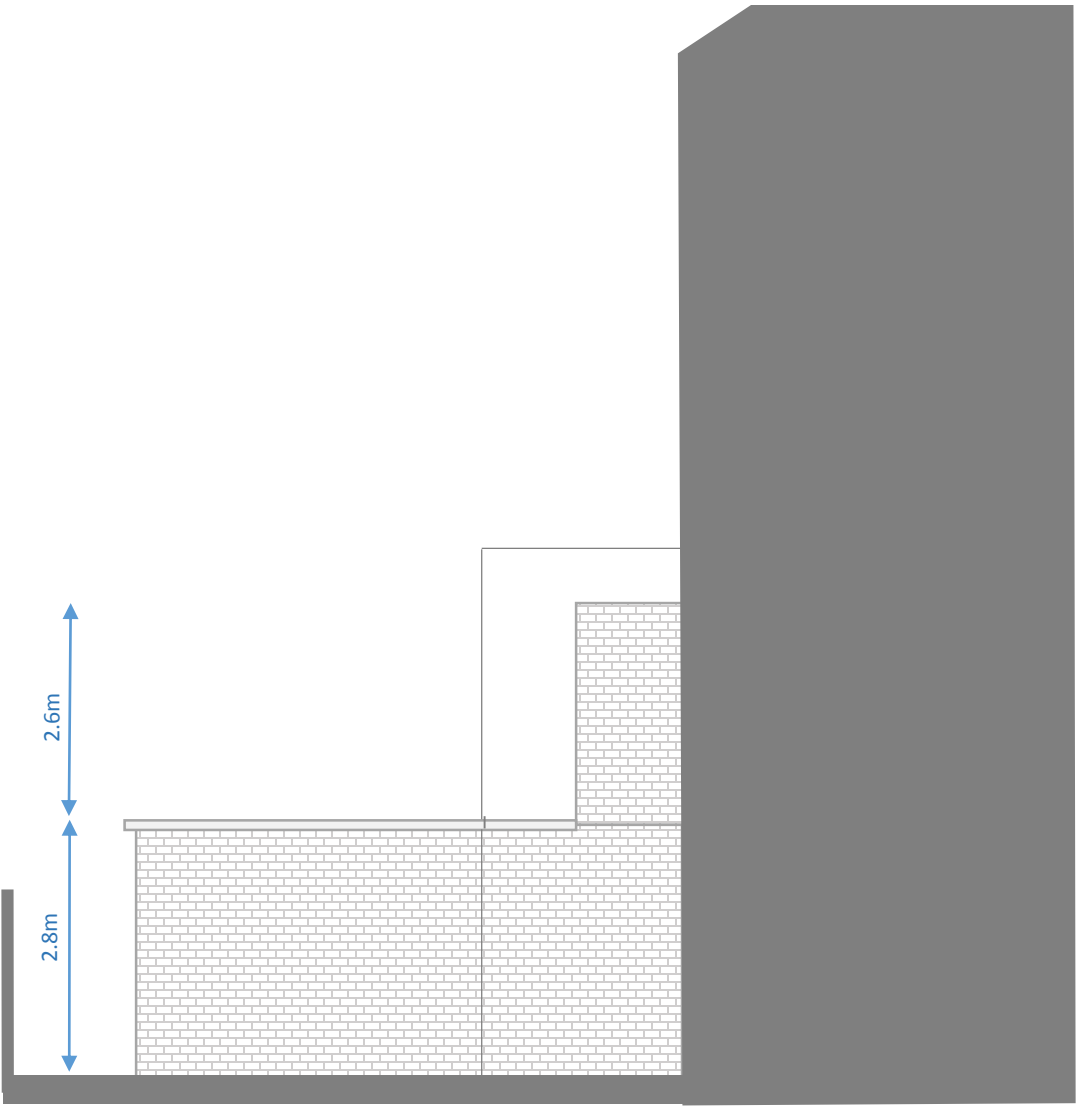




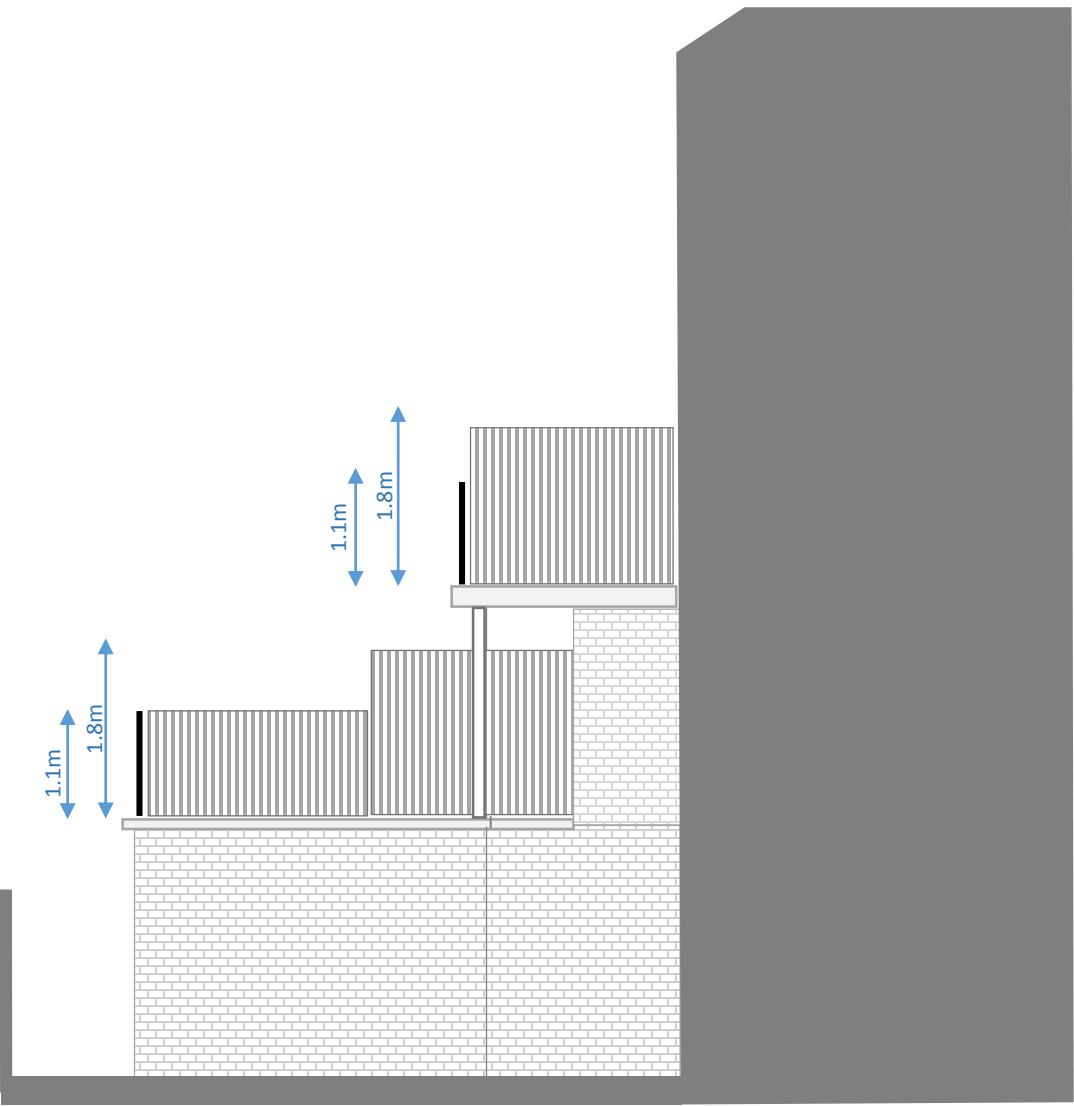
Existing



Proposed



Existing



Proposed

