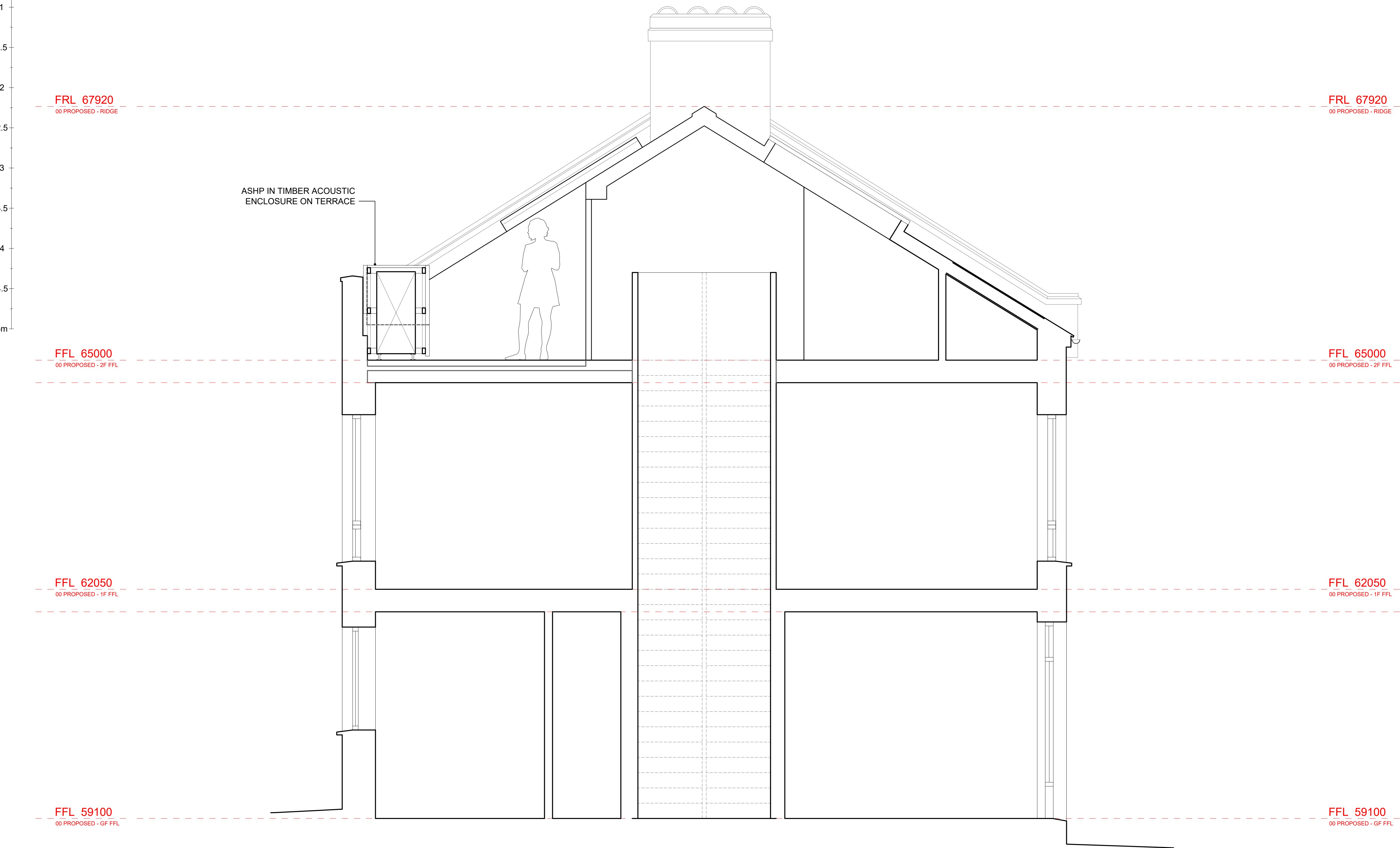


Architectural drawing showing a cross-section of a terrace enclosure. The drawing includes a horizontal axis labeled from 0 to 5m and a vertical axis labeled from 0 to 5m. A dashed red line indicates the ridge of the roof, labeled "FRL 67920" and "00 PROPOSED - RIDGE". A label "ASHP IN TIMBER ACOUSTIC ENCLOSURE ON TERRACE" points to a unit on the terrace. The drawing shows a building structure with a roof and a terrace area.



		Revision	Date	Comments	Revision	Date	Comments	Drawing Title	Project	Scale	Stage	Revision
		P01	10/04/25	Planning Application				PROPOSED SECTION BB	253	1:25 1:50	@ A1 @ A3	P01
This drawing is copyright. This drawing is the property of Gianni Botsford Architects Ltd. It may not be copied or disclosed to any third party without the permission of Gianni Botsford Architects Ltd.	The contractor shall submit full-size setting out drawings based on information provided in the drawings and specifications to the architect for comment without which manufacture shall not commence.							Client	Date	Drawn By	Drawing Number	
								N. BAYLIN	12/03/25	IP	253 216	
All dimensions are to be checked on site before any work proceeds. Do not scale this drawing but use only figured dimensions. Any errors or omissions are to be reported to the architect immediately.	This drawing is to be read in conjunction with all the relevant consultants' and/or specialists' drawings/documents and any discrepancies or variations are to be notified to the Architect before work commences.							Project				
								13 ETON GARAGES, NW3 4PE				
									GIANNI BOTSFORD ARCHITECTS		+44 (0)20 7434 2277 info@giannibotsford.com 8 Pembridge Villas, London W11 2SU	

Scale 1:25 at A1

00.51.52.2533.544.55m

0.5

1

1.5

2

2.5

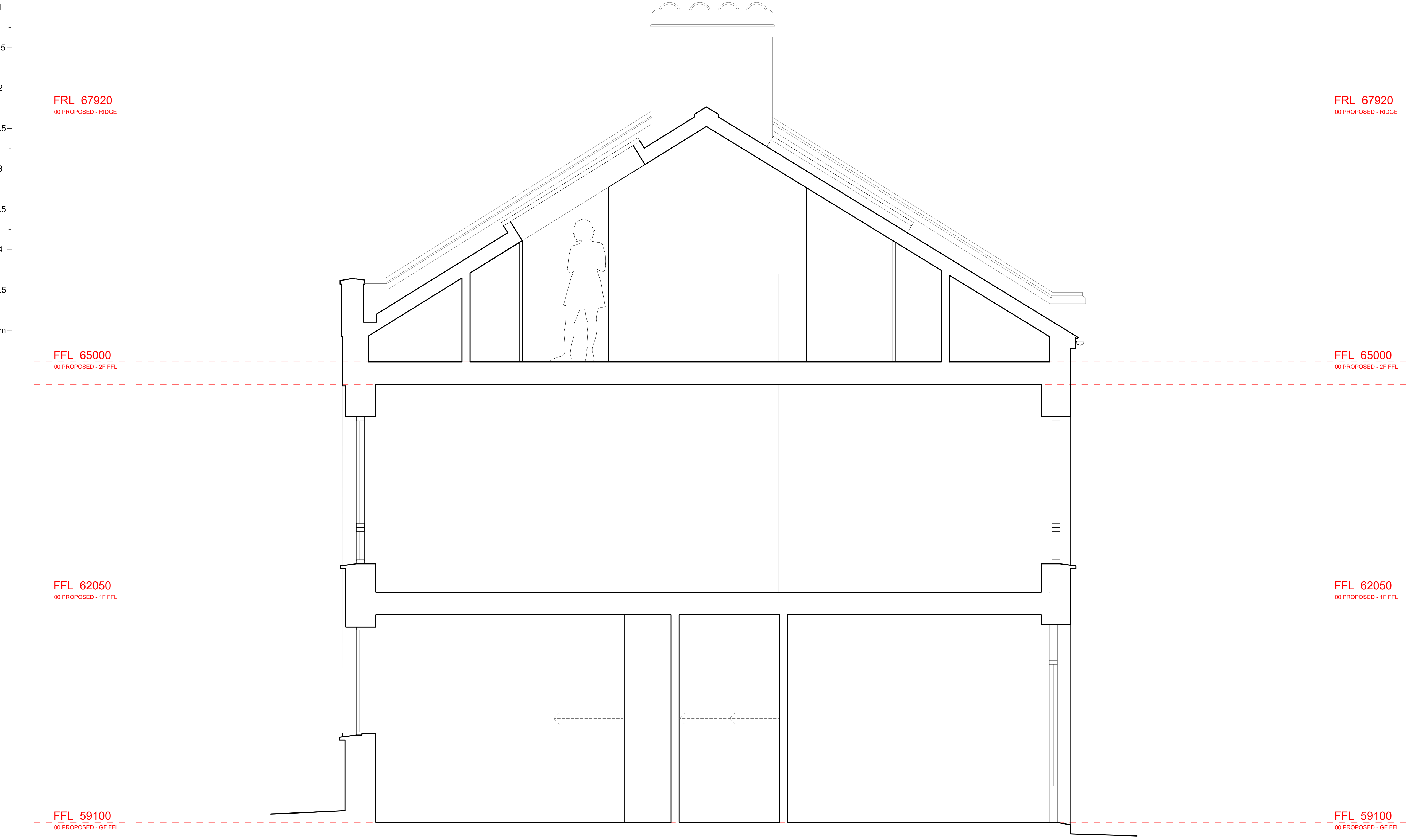
3

3.5

4

4.5

5m



		Revision	Date	Comments	Revision	Date	Comments	Drawing Title	Project	Scale	Stage	Revision	
		P01	10/04/25	Planning Application				PROPOSED SECTION AA	253	1:25 @ A1 1:50 @ A3	PLANNING	P01	
This drawing is copyright. This drawing is the property of Gianni Botsford Architects Ltd. It may not be copied or disclosed to any third party without the permission of Gianni Botsford Architects Ltd.	The contractor shall submit full-size setting out drawings based on information provided in the drawings and specifications to the architect for comment without which manufacture shall not commence.							Client	Date	Drawn By	Drawing Number		
								N. BAYLIN	21/03/25	IP	253 215		
All dimensions are to be checked on site before any work proceeds. Do not scale this drawing but use only figured dimensions. Any errors or omissions are to be reported to the architect immediately.	This drawing is to be read in conjunction with all the relevant consultants' and/or specialists' drawings/documents and any discrepancies or variations are to be notified to the Architect before work commences.							Project	GIANNI BOTSFORD ARCHITECTS				+44 (0)20 7434 2277 info@giannibotsford.com 8 Pembridge Villas, London W11 2SU
								13 ETON GARAGES, NW3 4PE					

Scale 1:25 at A1

0 0.5 1 1.5 2 2.5 3 3.5 4 4.5 5m

0.5

1

1.5

2

2.5

3

3.5

4

4.5

5m

GA SECTION A

GA SECTION B

01

02

03

04

04

05

06

07

04

FRL 67920
00 PROPOSED - RIDGE

FFL 65000
00 PROPOSED - 2F FFL

FFL 62050
00 PROPOSED - 1F FFL

FFL 59100
00 PROPOSED - GF FFL

FRL 67920
00 PROPOSED - RIDGE

FFL 65000
00 PROPOSED - 2F FFL

FFL 62050
00 PROPOSED - 1F FFL

FFL 59100
00 PROPOSED - GF FFL

DRAWING KEY

- 01 Slate roof rebuilt to match existing
- 02 Proposed top hung conservation rooflight
- 03 Existing brick wall altered to accomodate new window openings
- 04 New double-glazed painted timber arched window with brick soldier course to head
- 05 New metal rainwater goods
- 06 New double-glazed painted timber sliding-folding doors with brick soldier course to head
- 07 New double-glazed painted timber entrance door with toplight and brick soldier course to head

This drawing is copyright. This drawing is the property of Gianni Botsford Architects Ltd. It may not be copied or disclosed to any third party without the permission of Gianni Botsford Architects Ltd.	The contractor shall submit full-size setting out drawings based on information provided in the drawings and specifications to the architect for comment without which manufacture shall not commence.	Revision	Date	Comments	Revision	Date	Comments	Drawing Title	Project	Scale	Stage	Revision
		P01	10/04/25	Planning Application				PROPOSED FRONT (EAST) ELEVATION	253	1:25 @ A1 1:50 @ A3	PLANNING	P01
								Client	Date	Drawn By	Drawing Number	
								N. BAYLIN	21/03/25	IP	253 210	
All dimensions are to be checked on site before any work proceeds. Do not scale this drawing but use only figured dimensions. Any errors or omissions are to be reported to the architect immediately.	This drawing is to be read in conjunction with all the relevant consultants' and/or specialists' drawings/documents and any discrepancies or variations are to be notified to the Architect before work commences.							Project	GIANNI BOTSFORD ARCHITECTS			
								13 ETON GARAGES, NW3 4PE	+44 (0)20 7434 2277 info@giannibotsford.com 8 Pembridge Villas, London W11 2SU			

Scale 1:25 at A1

00.51.52.33.54.5

0.5

1

1.5

2

2.5

3

3.5

4

4.5

5m

GA SECTION B

GA SECTION A

FRL 67920
00 PROPOSED - RIDGE

FRL 67920
00 PROPOSED - RIDGE

FFL 65000
00 PROPOSED - 2F FFL

FFL 65000
00 PROPOSED - 2F FFL

FFL 62050
00 PROPOSED - 1F FFL

FFL 62050
00 PROPOSED - 1F FFL

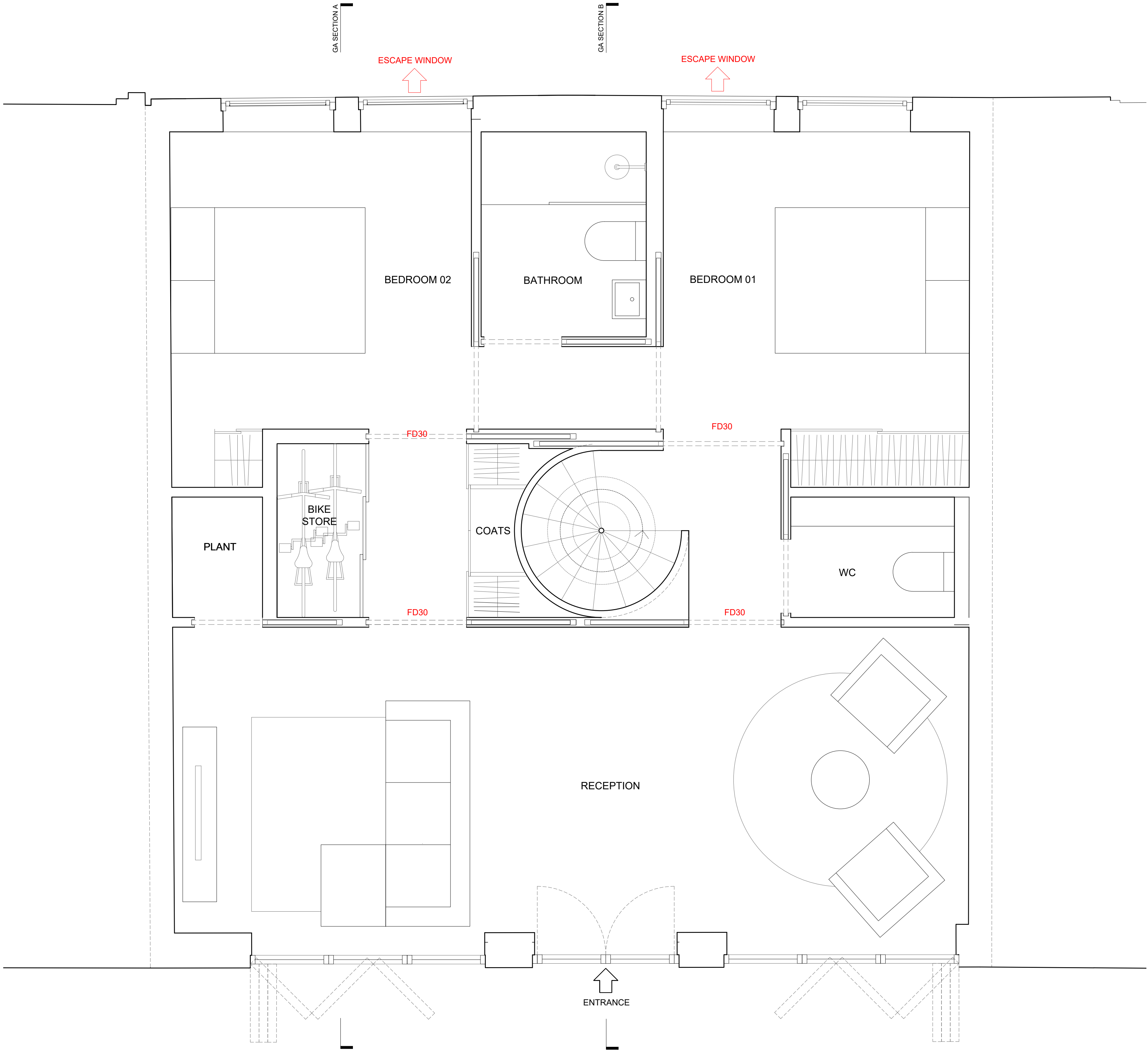
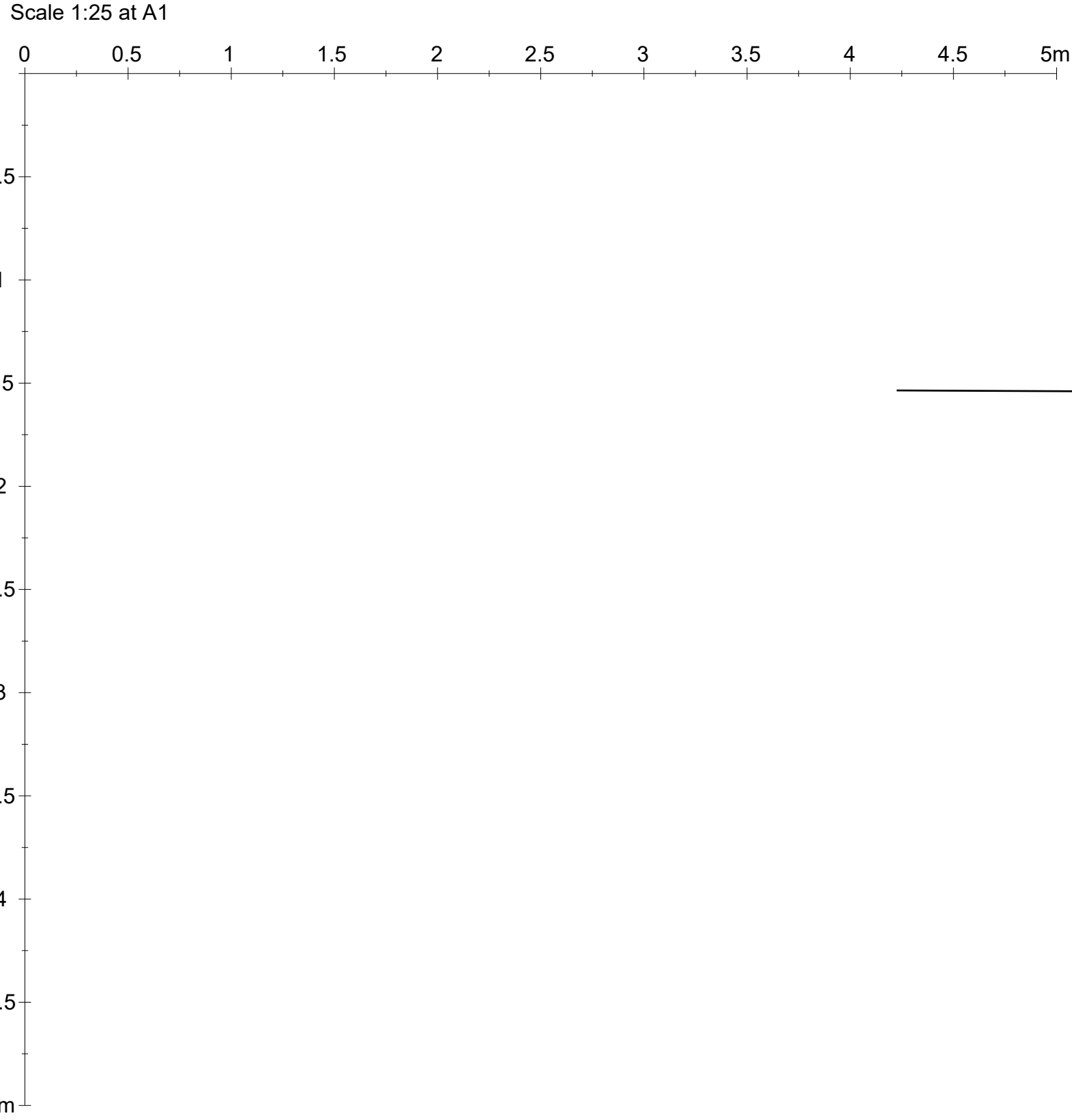
FFL 59100
00 PROPOSED - GF FFL

FFL 59100
00 PROPOSED - GF FFL

DRAWING KEY

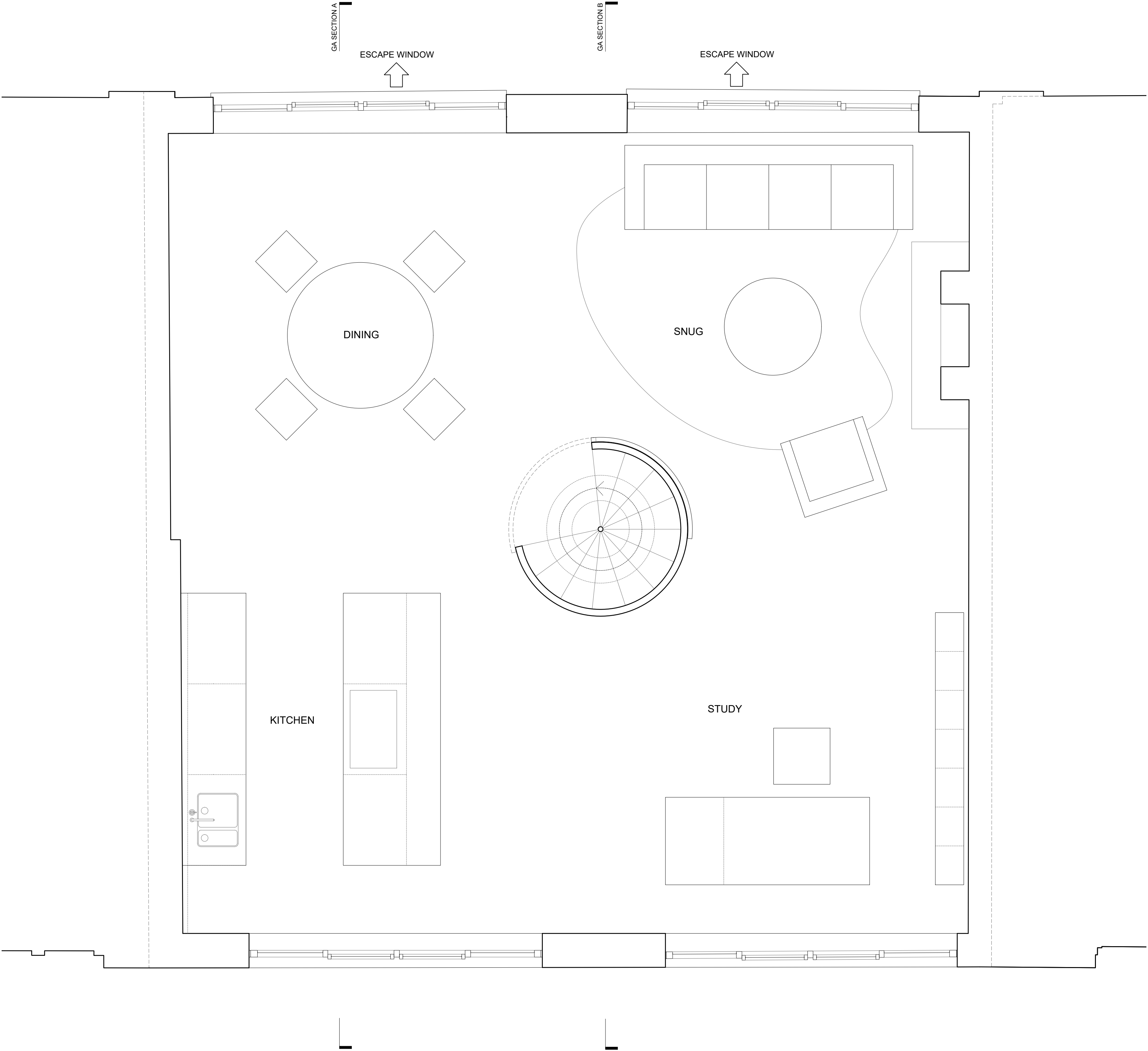
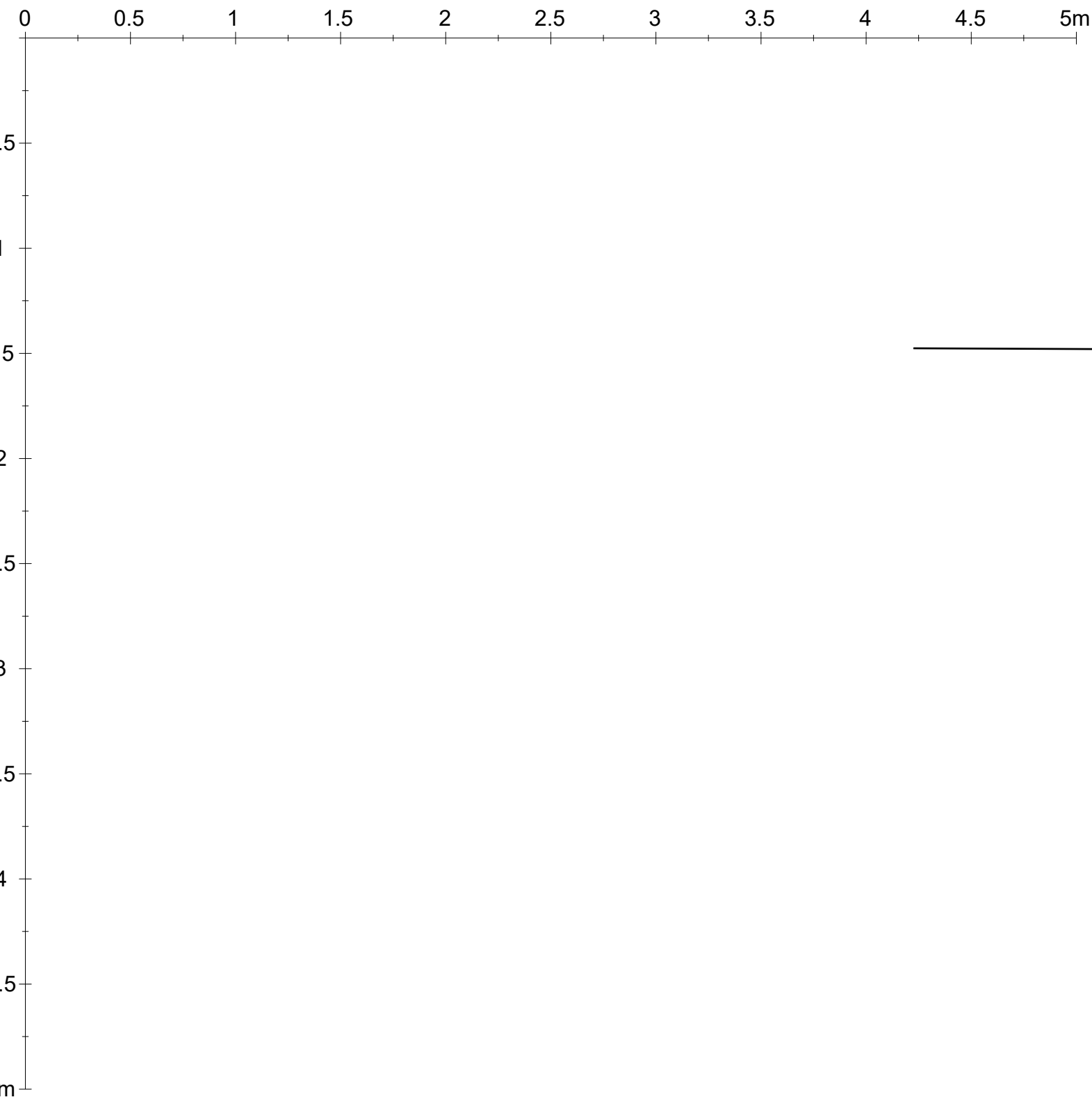
- 01Slate roof rebuilt to match existing
- 02Terrace moved to central location
- 03Existing brick wall altered to accommodate new window openings
- 04New double-glazed painted timber arched window in existing opening with lowered sill to match neighbour
- 05New double-glazed painted timber window in existing opening with lowered sill to provide means of escape
- 06Existing render band lowered in line with new sill height to windows
- 07Proposed ASHP in timber acoustic enclosure installed on terrace
- 08Proposed top-hung rooflight. Falls under permitted development rules and Article 4 exemptions for rooflights on rear elevations.

		<div>Revision</div> <div>P01</div>	<div>Date</div> <div>10/04/25</div>	<div>Comments</div> <div>Planning Application</div>		<div>Revision</div>	<div>Date</div>	<div>Comments</div>	<div>Drawing Title</div> <div>PROPOSED REAR (WEST) ELEVATION</div>	<div>Project</div> <div>253</div>	<div>Scale</div> <div>1:25 @ A1</div> <div>1:50 @ A3</div>	<div>Stage</div> <div>PLANNING</div>	<div>Revision</div> <div>P01</div>
<div>This drawing is copyright. This drawing is the property of Gianni Botsford Architects Ltd. It may not be copied or disclosed to any third party without the permission of Gianni Botsford Architects Ltd.</div>	<div>The contractor shall submit full-size setting out drawings based on information provided in the drawings and specifications to the architect for comment without which manufacture shall not commence.</div>								<div>Client</div> <div>N. BAYLIN</div>	<div>Date</div> <div>21/03/25</div>	<div>Drawn By</div> <div>IP</div>	<div>Drawing Number</div> <div>253 211</div>	
<div>All dimensions are to be checked on site before any work proceeds. Do not scale this drawing but use only figured dimensions. Any errors or omissions are to be reported to the architect immediately.</div>	<div>This drawing is to be read in conjunction with all the relevant consultants' and/or specialists' drawings/documents and any discrepancies or variations are to be notified to the Architect before work commences.</div>								<div>Project</div> <div>13 ETON GARAGES, NW3 4PE</div>	<div>GIANNI BOTSFORD ARCHITECTS</div> <div>+44 (0)20 7434 2277 info@giannibotsford.com 8 Pembridge Villas, London W11 2SU</div>			

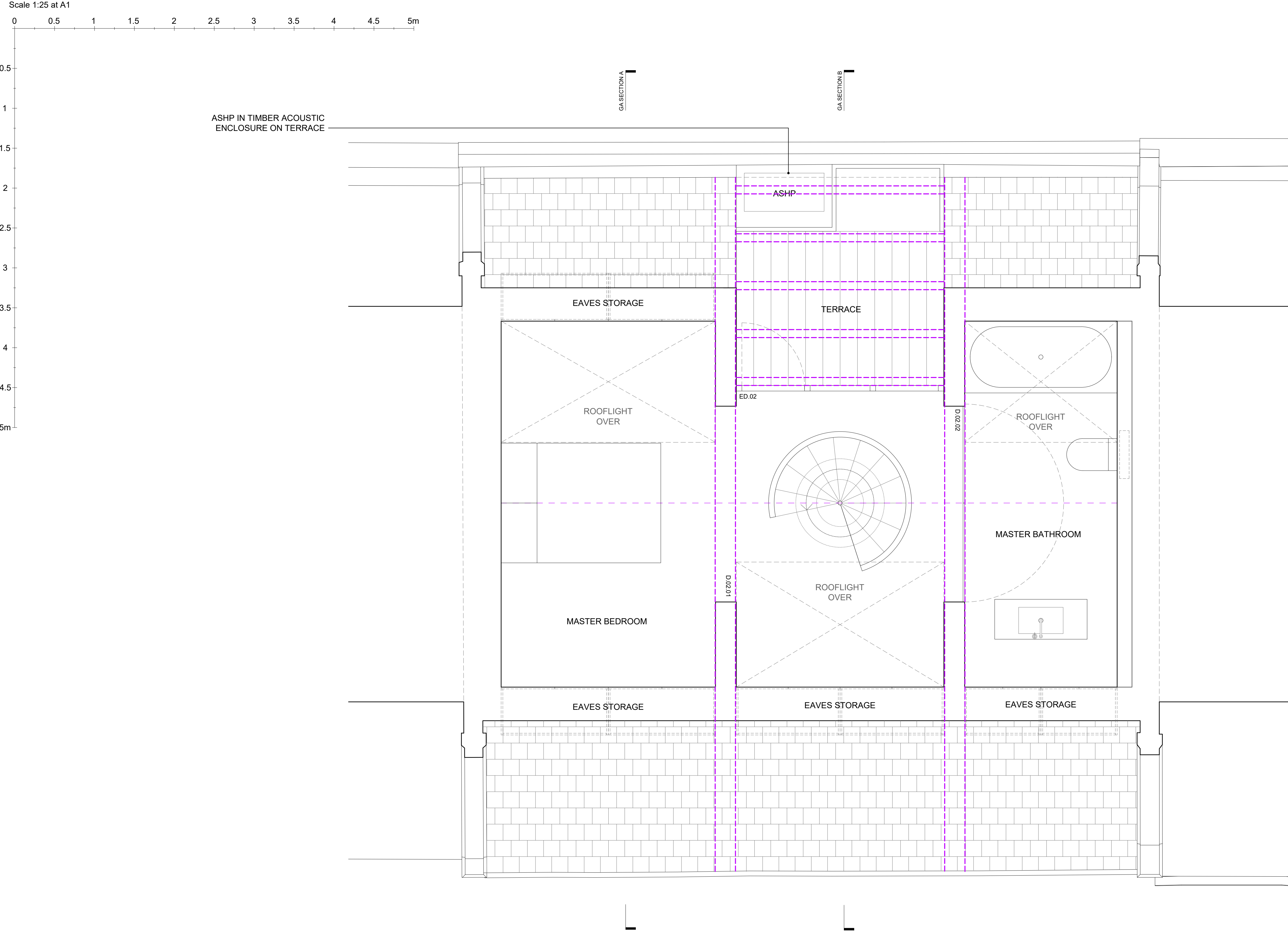


--	--	--	--	--	--	--	--	--	--	--	--	--	--	--	--	--	--	--	--	--	--	--	--	--	--	--	--	--	--	--	--	--	--	--	--	--	--	--	--	--	--	--	--	--	--	--	--	--	--	--	--	--	--	--	--	--	--	--	--	--	--	--	--	--	--	--	--	--	--	--	--	--	--	--	--	--	--	--	--	--	--	--	--	--	--	--	--	--	--	--	--	--	--	--	--	--	--	--	--	--	--	--	--	--	--	--	--	--	--	--	--	--	--	--	--	--	--	--	--	--	--	--	--	--	--	--	--	--	--	--	--	--	--	--	--	--	--	--	--	--	--	--	--	--	--	--	--	--	--	--	--	--	--	--	--	--	--	--	--	--	--	--	--	--	--	--	--	--	--	--	--	--	--	--	--	--	--	--	--	--	--	--	--	--	--	--	--	--	--	--	--	--	--	--	--	--	--	--	--	--	--	--	--	--	--	--	--	--	--	--	--	--	--	--	--	--	--	--	--	--	--	--	--	--	--	--	--	--	--	--	--	--	--	--	--	--	--	--	--	--	--	--	--	--	--	--	--	--	--	--	--	--	--	--	--	--	--	--	--	--	--	--	--	--	--	--	--	--	--	--	--	--	--	--	--	--	--	--	--	--	--	--	--	--	--	--	--	--	--	--	--	--	--	--	--	--	--	--	--	--	--	--	--	--	--	--	--	--	--	--	--	--	--	--	--	--	--	--	--	--	--	--	--	--	--	--	--	--	--	--	--	--	--	--	--	--	--	--	--	--	--	--	--	--	--	--	--	--	--	--	--	--	--	--	--	--	--	--	--	--	--	--	--	--	--	--	--	--	--	--	--	--	--	--	--	--	--	--	--	--	--	--	--	--	--	--	--	--	--	--	--	--	--	--	--	--	--	--	--	--	--	--	--	--	--	--	--	--	--	--	--	--	--	--	--	--	--	--	--	--	--	--	--	--	--	--	--	--	--	--	--	--	--	--	--	--	--	--	--	--	--	--	--	--	--	--	--	--	--	--	--	--	--	--	--	--	--	--	--	--	--	--	--	--	--	--	--	--	--	--	--	--	--	--	--	--	--	--	--	--	--	--	--	--	--	--	--	--	--	--	--	--	--	--	--	--	--	--	--	--	--	--	--	--	--	--	--	--	--	--	--	--	--	--	--	--	--	--	--	--	--	--	--	--	--	--	--	--	--	--	--	--	--	--	--	--	--	--	--	--	--	--	--	--	--	--	--	--	--	--	--	--	--	--	--	--	--	--	--	--	--	--	--	--	--	--	--	--	--	--	--	--	--	--	--	--	--	--	--	--	--	--	--	--	--	--	--	--	--	--	--	--	--	--	--	--	--	--	--	--	--	--	--	--	--	--	--	--	--	--	--	--	--	--	--	--	--	--	--	--	--	--	--	--	--	--	--	--	--	--	--	--	--	--	--	--	--	--	--	--	--	--	--	--	--	--	--	--	--	--	--	--	--	--	--	--	--	--	--	--	--	--	--	--	--	--	--	--	--	--	--	--	--	--	--	--	--	--	--	--	--	--	--	--	--	--	--	--	--	--	--	--	--	--	--	--	--	--	--	--	--	--	--	--	--	--	--	--	--	--	--	--	--	--	--	--	--	--	--	--	--	--	--	--	--	--	--	--	--	--	--	--	--	--	--	--	--	--	--	--	--	--	--	--	--	--	--	--	--	--	--	--	--	--	--	--	--	--	--	--	--	--	--	--	--	--	--	--	--	--	--	--	--	--	--	--	--	--	--	--	--	--	--	--	--	--	--	--	--	--	--	--	--	--	--	--	--	--	--	--	--	--	--	--	--	--	--	--	--	--	--	--	--	--	--	--	--	--	--	--	--	--	--	--	--	--	--	--	--	--	--	--	--	--	--	--	--	--	--	--	--	--	--	--	--	--	--	--	--	--	--	--	--	--	--	--	--	--	--	--	--	--	--	--	--	--	--	--	--	--	--	--	--	--	--	--	--	--	--	--	--	--	--	--	--	--	--	--	--	--	--	--	--	--	--	--	--	--	--	--	--	--	--	--	--	--	--	--	--	--	--	--	--	--	--	--	--	--	--	--	--	--	--	--	--	--	--	--	--	--	--	--	--	--	--	--	--	--	--	--	--	--	--	--	--	--	--	--	--	--	--	--	--	--	--	--	--	--	--	--	--	--	--	--	--	--	--	--	--	--	--	--	--	--	--	--	--	--	--	--	--	--	--	--	--	--	--	--	--	--	--	--	--	--	--	--	--	--	--	--	--	--	--	--	--	--	--	--	--	--	--	--	--	--	--	--	--	--	--	--	--	--	--	--	--	--	--	--	--	--	--	--	--	--	--	--	--	--	--	--	--	--	--	--	--	--	--	--	--	--	--	--	--	--	--	--	--	--	--	--	--	--	--	--	--	--	--	--	--	--	--	--	--	--	--	--	--	--	--	--	--	--	--	--	--	--	--	--	--	--	--	--	--	--	--	--	--	--	--	--	--	--	--	--	--	--	--	--	--	--	--	--	--	--	--	--	--	--	--	--	--	--	--	--	--	--	--	--	--	--	--	--	--	--	--	--	--	--	--	--	--	--	--	--	--	--	--	--	--	--	--	--	--	--	--	--	--	--	--	--	--	--	--	--	--	--	--	--	--	--	--	--	--	--	--	--	--	--	--	--	--	--	--	--	--	--	--	--	--	--	--	--	--	--	--	--	--	--	--	--	--	--	--	--	--	--	--	--	--	--	--	--	--	--	--	--	--	--	--	--	--	--	--	--	--	--	--	--	--	--	--	--	--	--	--	--	--	--	--	--	--	--	--	--	--	--	--	--	--	--	--	--	--	--	--	--	--	--	--	--	--	--	--	--	--	--	--	--	--	--	--	--	--	--	--	--	--	--	--	--	--	--	--	--	--	--	--	--	--	--	--	--	--	--	--	--	--	--	--	--	--	--	--	--	--	--	--	--	--	--	--	--	--	--	--	--	--	--	--	--	--	--	--	--	--	--	--	--	--	--	--	--	--	--	--	--	--	--	--	--	--	--	--	--	--	--	--	--	--	--	--	--	--	--	--	--	--	--	--	--	--	--	--	--	--	--	--	--	--	--	--	--	--	--	--	--	--	--	--	--	--	--	--	--	--	--	--	--	--	--	--	--	--	--	--	--	--	--	--	--	--	--	--	--	--	--	--	--	--	--	--	--	--	--	--	--	--	--	--	--	--	--	--	--	--	--	--	--	--	--	--	--	--	--	--	--	--	--	--	--	--	--	--	--	--	--	--	--	--	--	--	--	--	--	--	--	--	--	--	--	--	--	--	--	--	--	--	--	--	--	--	--	--	--	--	--	--	--	--	--	--	--	--	--	--	--	--	--	--	--	--	--	--	--	--	--	--	--	--	--	--	--	--	--	--	--	--	--	--	--	--	--	--	--	--	--	--	--	--	--	--	--	--	--	--	--	--	--	--	--	--	--	--	--	--	--	--	--	--	--	--	--	--	--	--	--	--	--	--	--	--	--	--	--	--	--	--	--	--	--	--	--	--	--	--	--	--	--	--	--	--	--	--	--	--	--	--	--	--	--	--	--	--	--	--	--	--	--	--	--	--	--	--	--	--	--	--	--	--	--	--	--	--	--	--	--	--	--	--	--	--	--	--	--	--	--	--	--	--	--	--	--	--	--	--	--	--	--	--	--	--	--	--	--	--	--	--	--	--	--	--	--	--	--	--	--	--	--	--	--	--

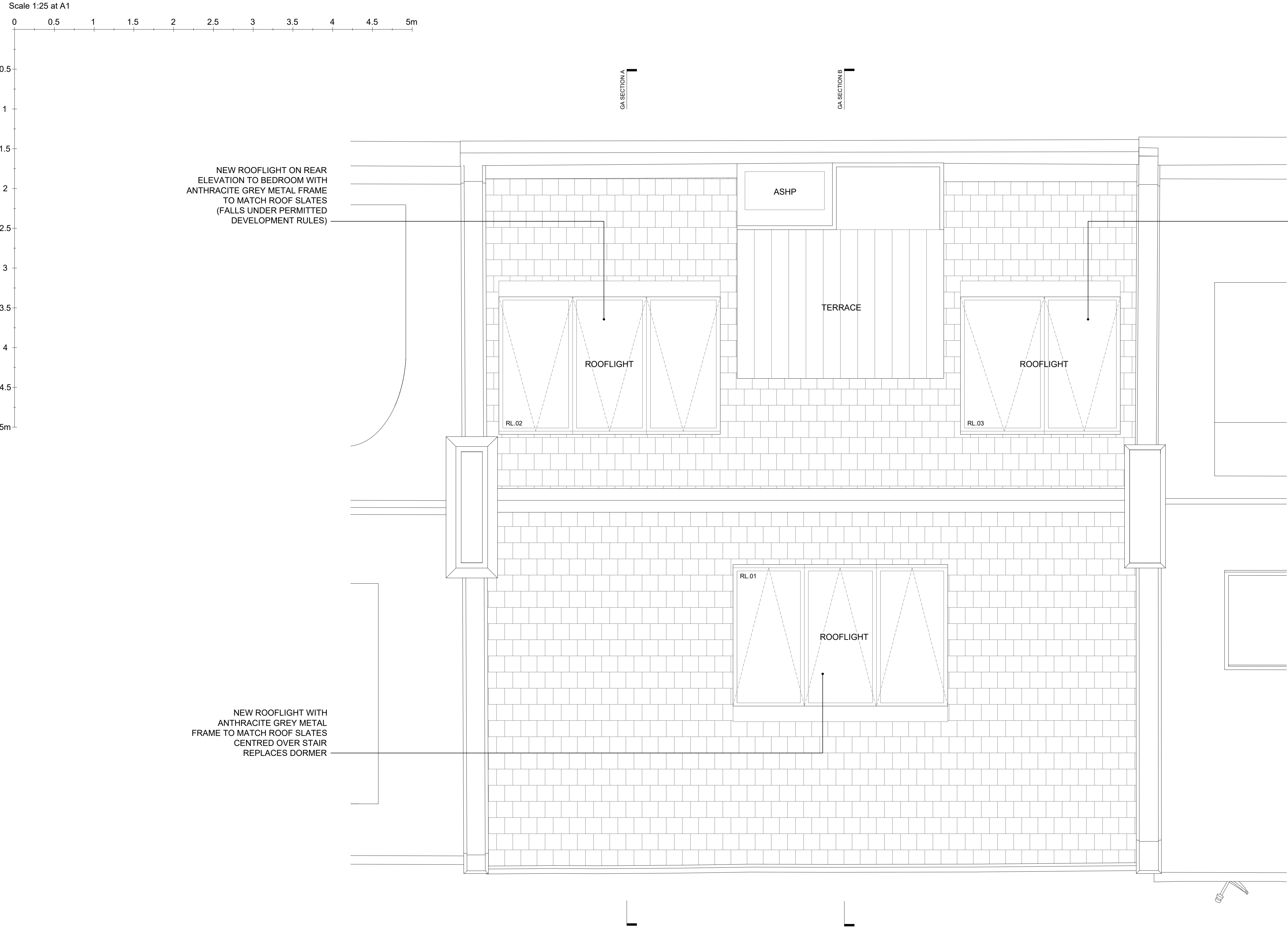
Scale 1:25 at A1



		Revision	Date	Comments	Revision	Date	Comments	Drawing Title	Project	Scale	Stage	Revision
		P01	10/04/25	Planning Application				PROPOSED FIRST FLOOR PLAN	253	1:25 @ A1 1:50 @ A3	PLANNING	P01
This drawing is copyright. This drawing is the property of Gianni Botsford Architects Ltd. It may not be copied or disclosed to any third party without the permission of Gianni Botsford Architects Ltd.	The contractor shall submit full-size setting out drawings based on information provided in the drawings and specifications to the architect for comment without which manufacture shall not commence.							Client	Date	Drawn By	Drawing Number	
								N. BAYLIN	12/03/25	IP	253 202	
								Project				
All dimensions are to be checked on site before any work proceeds. Do not scale this drawing but use only figured dimensions. Any errors or omissions are to be reported to the architect immediately.	This drawing is to be read in conjunction with all the relevant consultants' and/or specialists' drawings/documents and any discrepancies or variations are to be notified to the Architect before work commences.							13 ETON GARAGES, NW3 4PE	GIANNI BOTSFORD ARCHITECTS <div>+44 (0)20 7434 2277 info@giannibotsford.com 8 Pembridge Villas, London W11 2SU</div>			



		Revision	Date	Comments	Revision	Date	Comments	Drawing Title	Project	Scale	Stage	Revision
		P01	10/04/25	Planning Application				PROPOSED SECOND FLOOR PLAN	253	1:25 @ A1 1:50 @ A3	PLANNING	P01
This drawing is copyright. This drawing is the property of Gianni Botsford Architects Ltd. It may not be copied or disclosed to any third party without the permission of Gianni Botsford Architects Ltd.	The contractor shall submit full-size setting out drawings based on information provided in the drawings and specifications to the architect for comment without which manufacture shall not commence.							Client	Date	Drawn By	Drawing Number	
								N. BAYLIN	12/03/25	IP	253 203	
All dimensions are to be checked on site before any work proceeds. Do not scale this drawing but use only figured dimensions. Any errors or omissions are to be reported to the architect immediately.	This drawing is to be read in conjunction with all the relevant consultants' and/or specialists' drawings/documents and any discrepancies or variations are to be notified to the Architect before work commences.							Project	GIANNI BOTSFORD ARCHITECTS			
								13 ETON GARAGES, NW3 4PE	+44 (0)20 7434 2277 info@giannibotsford.com 8 Pembridge Villas, London W11 2SU			



		Revision	Date	Comments	Revision	Date	Comments	Drawing Title	Project	Scale	Stage	Revision
		P01	10/04/25	Planning Application				PROPOSED ROOF PLAN	253	1:25 @ A1 1:50 @ A3	PLANNING	P01
This drawing is copyright. This drawing is the property of Gianni Botsford Architects Ltd. It may not be copied or disclosed to any third party without the permission of Gianni Botsford Architects Ltd.	The contractor shall submit full-size setting out drawings based on information provided in the drawings and specifications to the architect for comment without which manufacture shall not commence.							Client	Date	Drawn By	Drawing Number	
								N. BAYLIN	12/03/25	IP	253 204	
All dimensions are to be checked on site before any work proceeds. Do not scale this drawing but use only figured dimensions. Any errors or omissions are to be reported to the architect immediately.	This drawing is to be read in conjunction with all the relevant consultants' and/or specialists' drawings/documents and any discrepancies or variations are to be notified to the Architect before work commences.							Project	GIANNI BOTSFORD ARCHITECTS			
								13 ETON GARAGES, NW3 4PE	+44 (0)20 7434 2277 info@giannibotsford.com 8 Pembridge Villas, London W11 2SU			