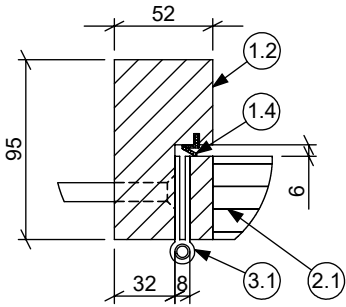
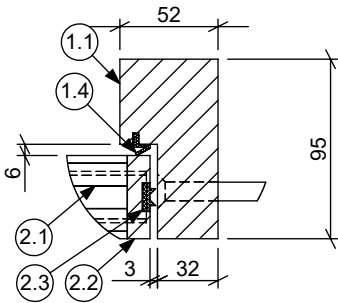


All / Any electrical equipment to be disconnected and connected by others

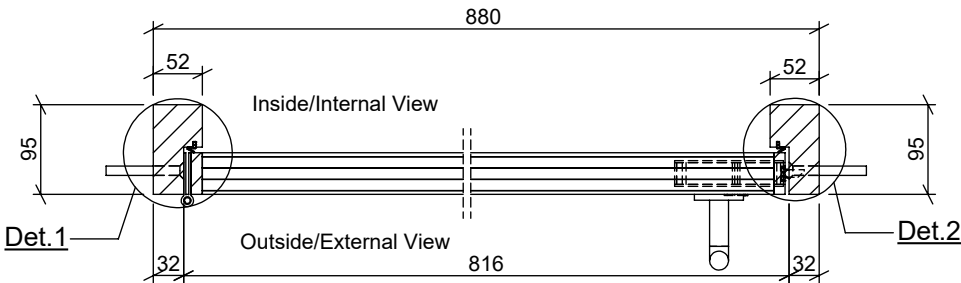
7 ST GEORGES TERRACE
STORE BETWEEN 1ST AND 2ND FLOOR
TOTAL QTY. 1 DOOR



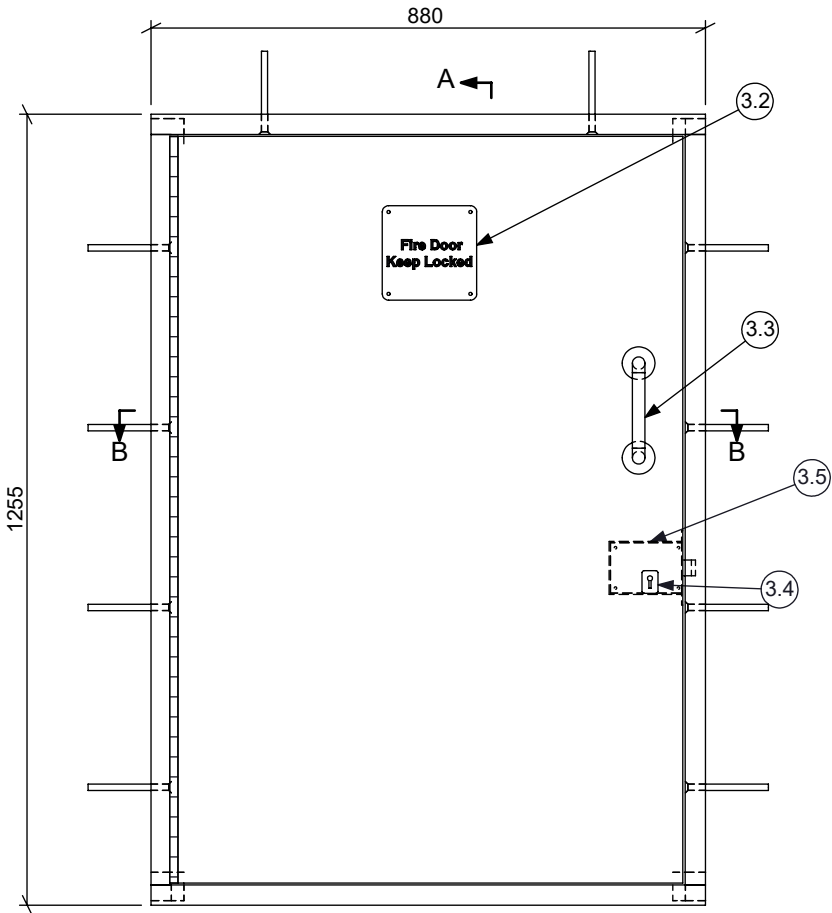
Det.1



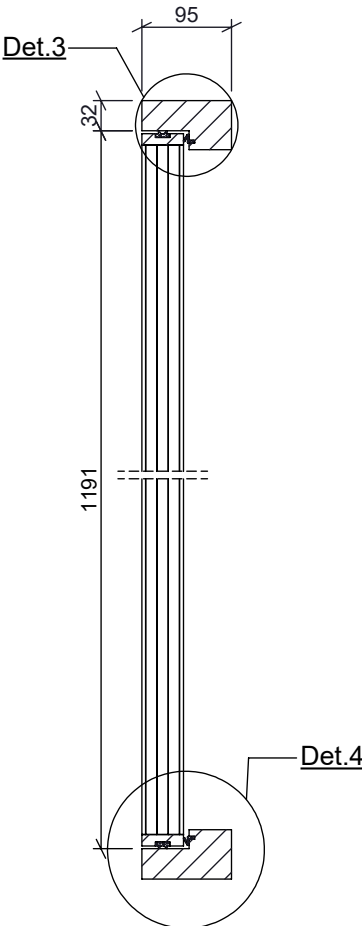
Det.2



SECTION B-B



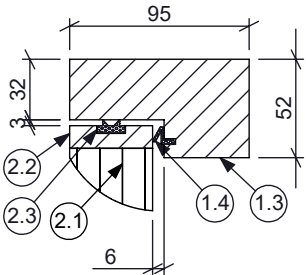
From External View
Hang Left Open Out
ELEVATION



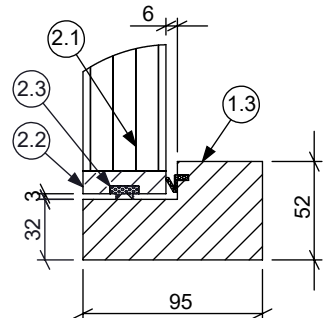
SECTION A-A

1. FD30S Doorset.
2. Door clear opening 744mm when 90° open


REPORTS	
ITEM 1	Test Report Number : WYC412017 / 03 Testing Standard BS EN 1634-3:2004
Positive	25Pa - 0.429 m ³ /hr/m (86% under allowable capacity)
Negative	25Pa - 0.405 m ³ /hr/m (87% under allowable capacity)
Percentage of seal for Intumescent Fire Seal	61% (interruption at shoot bolts and Lock positions)
Percentage of seal for Draft Seal	85% (interruption at bottom)
ITEM 2	Primary Burn Test Report No. WF 420594 Chilt/RF13251
ITEM 3	Field Application Report No. Chilt/A12038 RevD / WF 407952
ITEM 4	Q-Mark Fire Door Manufacturing 006 Scheme Certificate No. 1244
ITEM 5	FSC Certificate No. TT-COC-002470



Det.3



Det.4

PD NO. 0000 APPROVED				
ITEM NO.	DESCRIPTION	MATERIAL / PROFILE	SIZES	QTY.
1	FRAME ASSEMBLY			
1.1	Jamb	Meranti Rebated Hardwood Density : 640 Kg/m^3,±20%	52 X 95 X 32 - 1241mm	1
1.2	Jamb	Meranti Rebated Hardwood Density : 640 Kg/m^3,±20%	52 X 95 X 32 - 1241mm	1
1.3	Header & Footer	Meranti Rebated Hardwood Density : 640 Kg/m^3,±20%	52 X 95 X 32 - 880mm	2
1.4	Draught Excluder	Aquamac - 21	9mm X 3.91m	1
1.5	S/Sleeve Anchor Fixing	-	10 X 132mm	10
2	DOOR ASSEMBLY			
2.1	Door Leaf(W/O Lipping)	Flamebreak - Solid Core	44mm(Thk)	1
2.2	Door Lipping	Meranti Rebated Hardwood Density : 640 Kg/m^3,±20%	12 X 44mm - 3.95m	1
2.3	Intumescent Strip - Around Door	LP1504TS	15mm X 2.77m	1
3	IRONMONGERY			
3.1	Hinge	8mm Continuous Mild Steel	1185mm	1
3.2	Door Signage	Fire Door Keep Locked	-	1
3.3	Pull Handle	D Shaped	20 (Dia.) X 150mm	1
3.4	Door Lock	FB2 Lock	80 X 110	1
3.5	Intumescent Protection Around Lock	Tenmat Firefly 104E	2.1mm THK	1
COLOUR				
Door		As Per Survey Sheet		
Frame		As Per Survey Sheet		
FIXING DETAIL			THIS DRAWING IS THE PROPERTY OF MULTIINSTALLATIONS LIMITED AND MUST NOT BE COPIED OR DISCLOSED TO A THIRD PARTY WITHOUT THE WRITTEN PERMISSION OF MULTI-INSTALLATIONS LIMITED.	
= Fixing Positions				
= 10 X 132 S/Sleeve Anchor Fixing On Masonary				
= M 10 Machine Screw (for Steel)				
= M 10 Machine Screw (for Wood)				
A		Issued For Approval	15-03-2025	
REV		DETAIL	DATE	
PROJECT : 7 St Georges Terrace				
NW1 8XH Store between 1st and 2nd floor Clarion Housing				
DRAWN BY: Drawn By			DATE: 15-03-2025	
CHECKED BY: Checked By			SCALE: NTS	
<div><div>MULTI-INSTALLATIONS Manufacturers of High Security Doors And Lock - Architectural Steel Work</div></div>				
JOB NO.: 63.0001		DRG. NO.: 001		REV NO.: A

