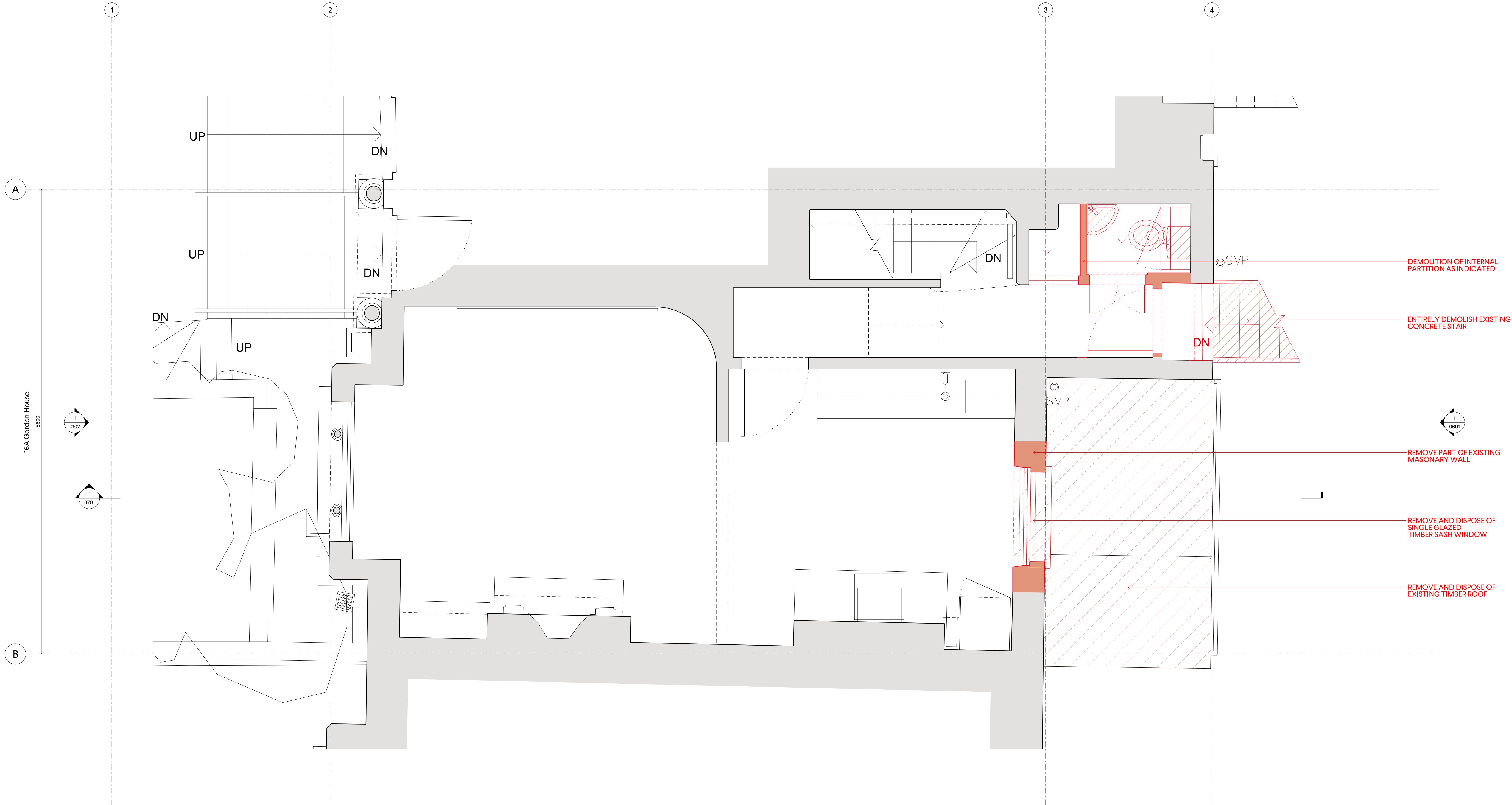


- DEMOLITION KEY
- DEMOLITION CUT THROUGH
 - MASONRY AND STRUCTURE TO BE DEMOLISHED
 - FIXTURES AND FITTINGS TO BE REMOVED
 - FINISHES TO BE REMOVED

DO NOT SCALE OFF THIS DRAWING. DIMENSIONS, AREA AND LEVELS ARE ONLY APPROXIMATE AND SUBJECT TO SITE SURVEY. ALL DIMENSIONS TO BE CHECKED ON SITE. ANY DISCREPANCIES OR VARIATIONS TO BE REPORTED TO THE ARCHITECT BEFORE WORK COMMENCES.

THIS DRAWING TO BE READ IN CONJUNCTION WITH THE SPECIFICATION, WHERE PROVIDED, AND ALL RELEVANT CONSULTANTS' DRAWINGS AND / OR SPECIALISTS' DRAWINGS. DOCUMENTS AND ANY DISCREPANCIES OR VARIATIONS ARE TO BE REPORTED TO THE ARCHITECT BEFORE THE AFFECTED WORK COMMENCES.

THIS DRAWING IS PROTECTED BY COPYRIGHT, AND MUST NOT BE COPIED OR REPRODUCED WITHOUT THE WRITTEN CONSENT OF HOD ARCHITECTS LTD. NORTH POINTS SHOWN ARE INDICATIVE. ©



PLANNING

DEMOLITION OF INTERNAL PARTITION AS INDICATED

ENTIRELY DEMOLISH EXISTING CONCRETE STAIR

REMOVE PART OF EXISTING MASONRY WALL

REMOVE AND DISPOSE OF SINGLE GLAZED TIMBER SASH WINDOW

REMOVE AND DISPOSE OF EXISTING TIMBER ROOF

1 1:25 DEMOLITION UPPER GROUND FLOOR PLAN



23.04.25 PLANNING APPLICATION MH

REV DATE NOTES INIT.

PROJECT
16a Gordon House NW5 1LN

DRAWING TITLE
DEMOLITION UPPER GROUND FLOOR PLAN

STATUS			
PLANNING			
SCALE	SIZE	DRAWN	CHECKED
1:25	A1	M80	GP
DRAWING NO.		ISSUE	REV
0142-A-P-0502		P1	-

0207 937 0007
INFO@HODARCHITECTS.CO.UK
13 PRINCE OF WALES TERRACE
KENSINGTON
LONDON W8 5PG

House of Design
Architects