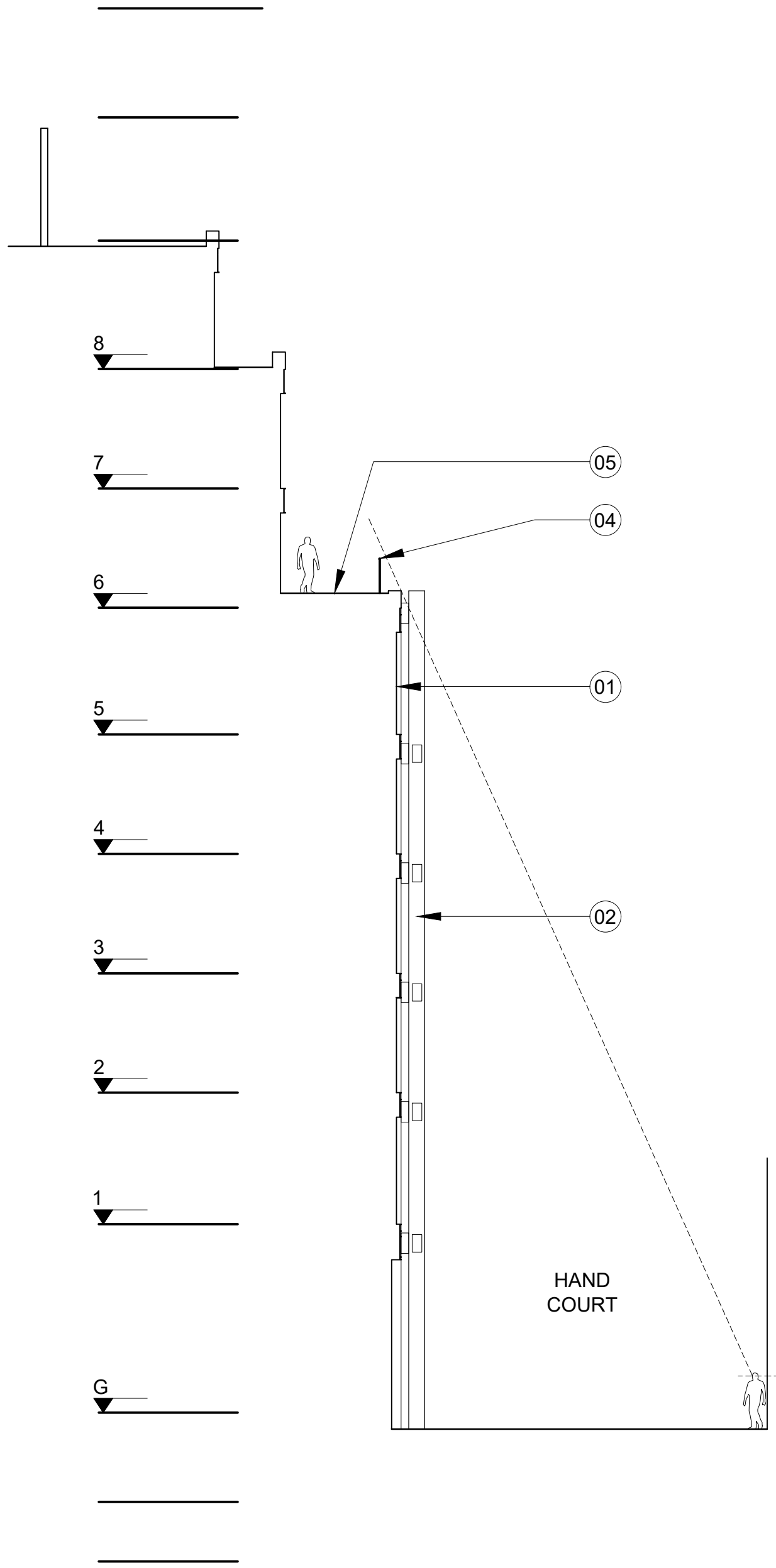


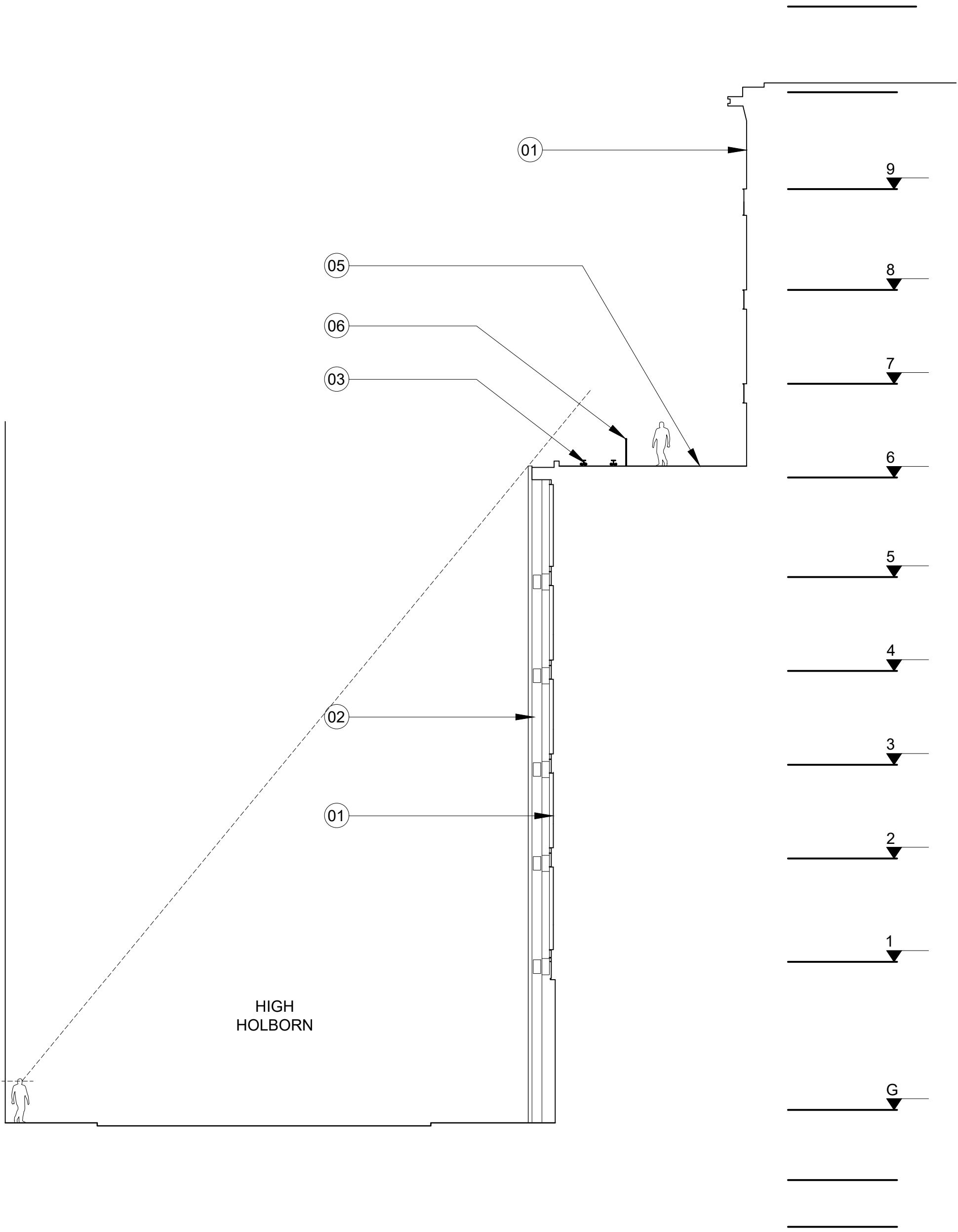
BARR GAZETAS

Note:

- 1. Existing glazed curtain walling.
- 2. Existing column cladding.
- 3. Existing maintenance cradle/ support structure.
- 4. New 12mm toughened clear glass balustrade with satin stainless steel top rail.
- 5. New timber decking to terrace.
- 6. New PPC black metal balustrade.

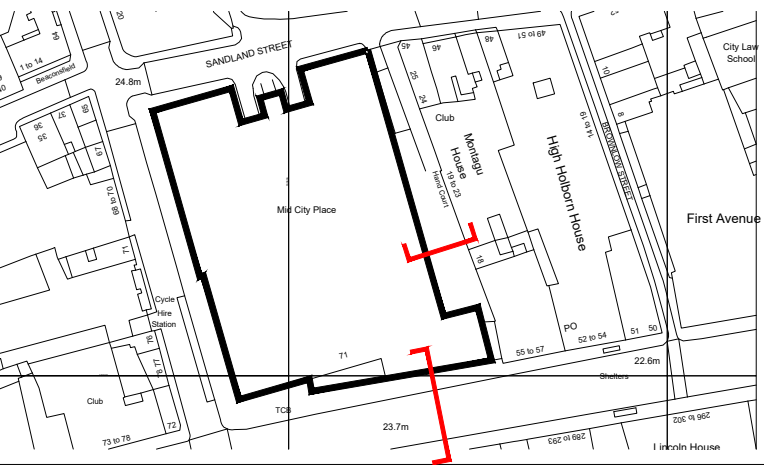


01 Hand Court Section
1:150@A1: 1:300@A3
10.208



02 High Holborn Section
1:150@A1: 1:300@A3
10.208

P3	Issued for Planning	HF	17.04.25
P2	Issued for Planning	TJ	01.02.19
P1	Issued for Planning	TJ	19.12.18
Rev.	Description.	By	Date



Client
Oxford Properties
Project
Mid City Place 6th Floor Terrace
Title

Status	Purpose of issue		RIBA stage	
S2	For Planning		02	
Project No.	Drawn	Checked	Scale	Rev.
1836	SL	TJ	1:100 @ A1 1:200 @ A3	P3

Drawing No.
1836-BG-00-ZZ-DR-A-20.255

Do not scale from this drawing. The Contractor is to take and check all dimensions on site before work commences. Discrepancies must be reported to the Architect. Subcontractors must verify all dimensions on site before making a shop drawing or commencing manufacturing. This drawing is copyright. ©
© Copyright Barr Gazetas Ltd.
A 10 Heddon Street, London, W1B 4BG
T 0207 636 5561
W www.barrgazetas.com