



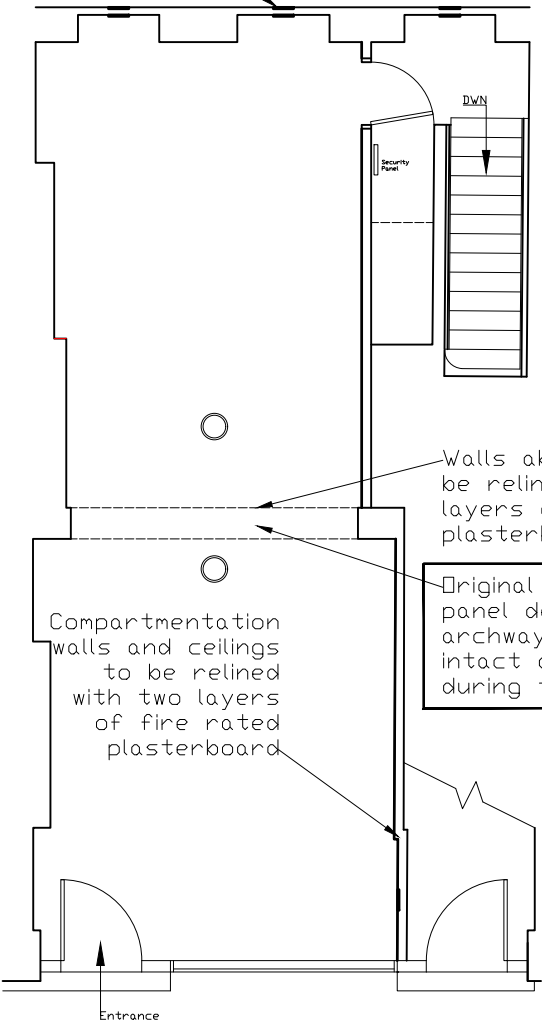
Location Plan Scale: 1/1250



Block Plan Scale: 1/500

# 3 Bloomsbury Street, London WC1B

Existing air grilles to be replaced with intumescent fire rated grilles



Ground Floor

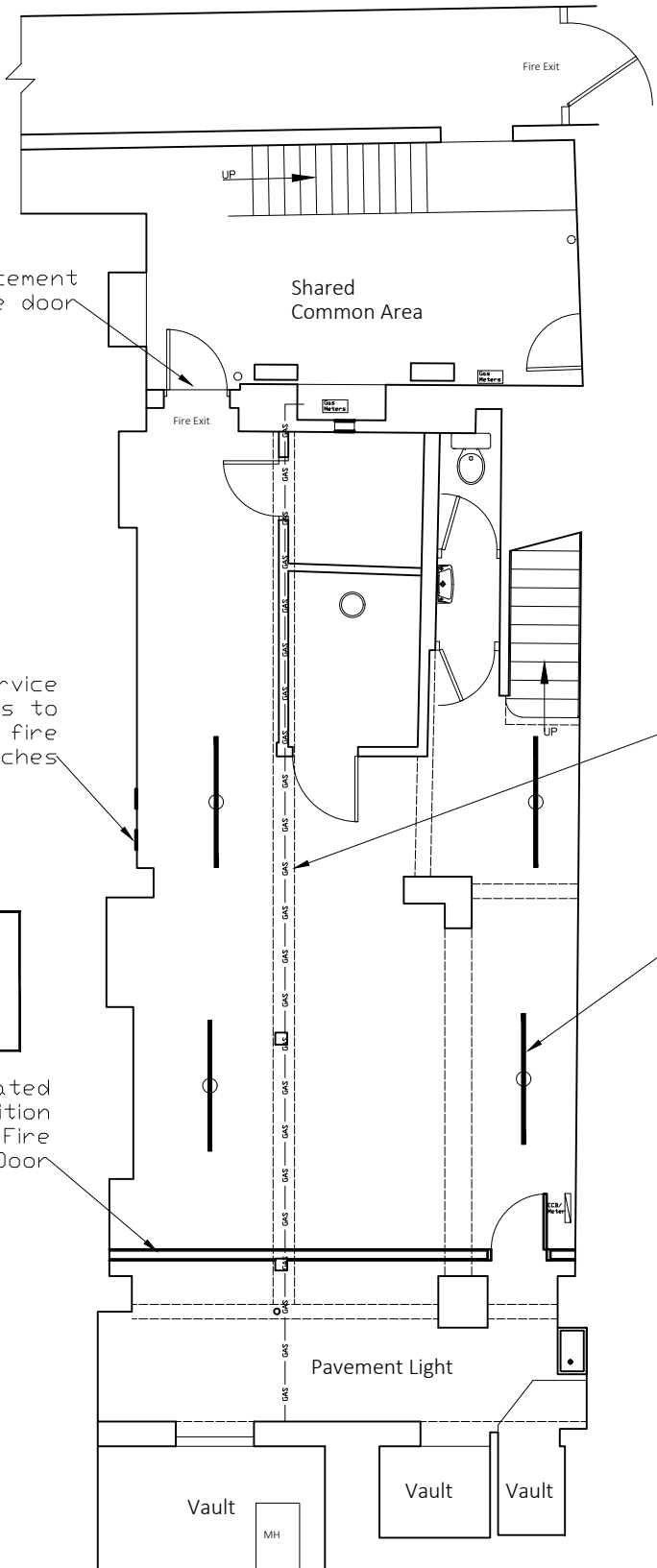
New replacement FD60s fire door

Existing service openings to receive fire rated hatches

Walls above archway to be relined with two layers of fire rated plasterboard

Original mouldings and panel details on the archway are to remain intact and protected during the works

New fire rated Stud Partition and FD30s Fire Door



Basement Floor

This drawing is copyright of Avison Young (UK) Limited.

Do not scale this drawing.  
All dimensions to be checked on site. Drawing to be read in conjunction with any specifications, schedules and Consultants drawings and details.

Rev	Revision Details	By	Chk'd	Date
...	...	...	...	...

**AVISON YOUNG**

08449 02 03 04  
65 Gresham Street, London, EC2V 7NQ  
www.avisonyoung.com

Project Name	Fire Safety Upgrades	Scale @ A3	1/100	Drawn	DL	Checked		Date	04.04.2025
Client	London Borough of Camden	Project No.	02C500317	Drawing No.	001	Rev.	A		
Drawing Title	Proposed Ground and Basement Floor Plans								