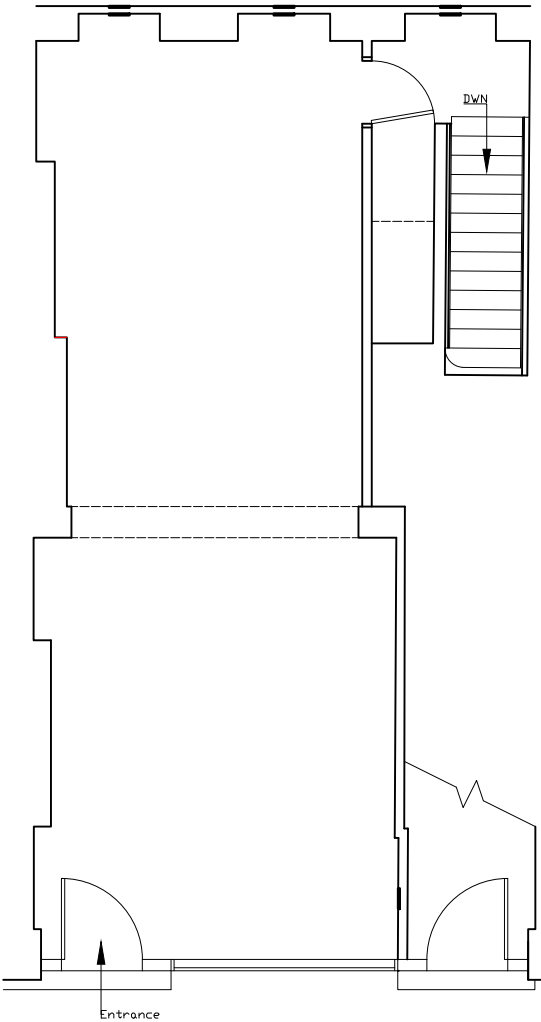


Location Plan Scale: 1/1250

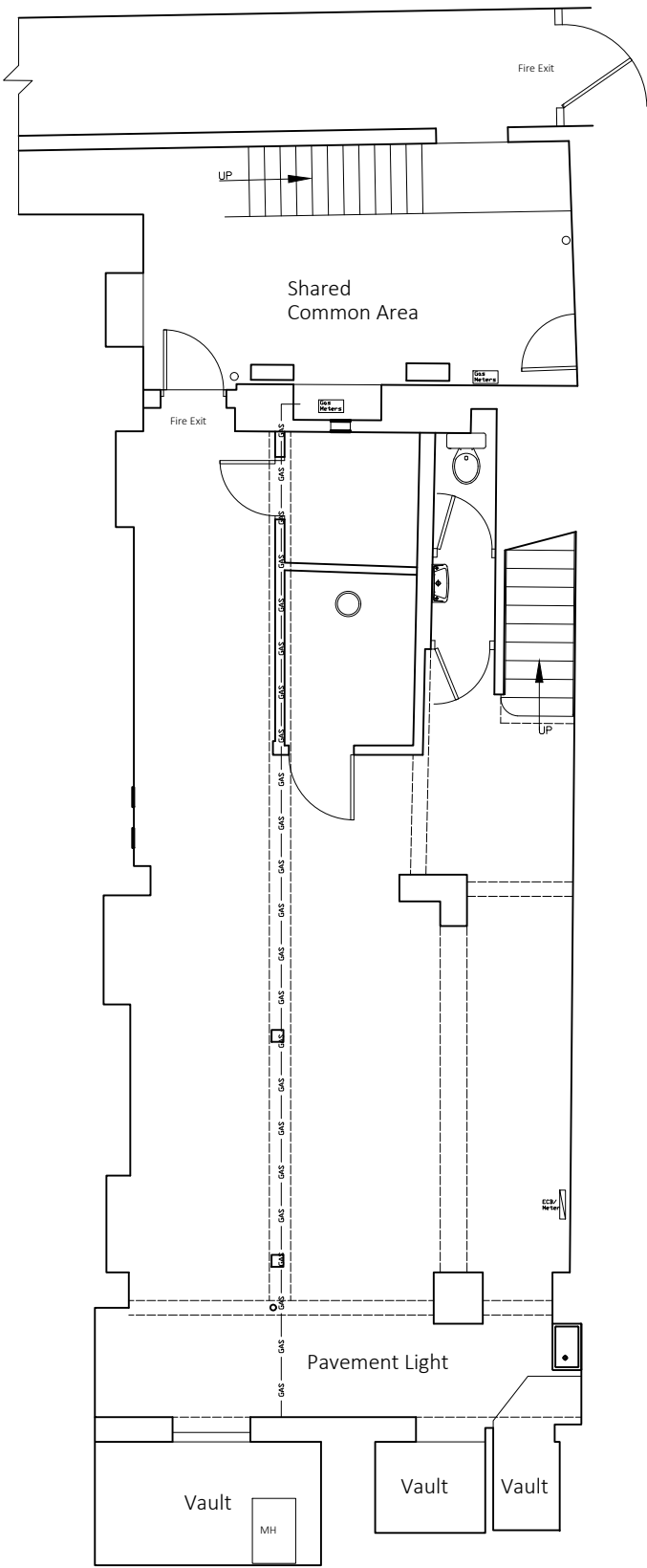


Block Plan Scale: 1/500

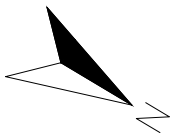
3 Bloomsbury Street, London WC1B



Ground Floor



Basement Floor



This drawing is copyright of Avison Young (UK) Limited.

Do not scale this drawing.
All dimensions to be checked on site. Drawing to be read in conjunction with any specifications, schedules and Consultants drawings and details.

Rev	Revision Details	By	Chk'd	Date
...

**AVISON
YOUNG**

08449 02 03 04
65 Gresham Street, London, EC2V 7NQ
www.avisonyoung.com

Project Name	Fire Safety Upgrades	Scale @ A3	1/100	Drawn	DL	Checked		Date	04.04.2025
Client	London Borough of Camden	Project No.	02C500317	Drawing No.	002	Rev.			
Drawing Title	Existing Ground and Basement Floor Plans								

A3