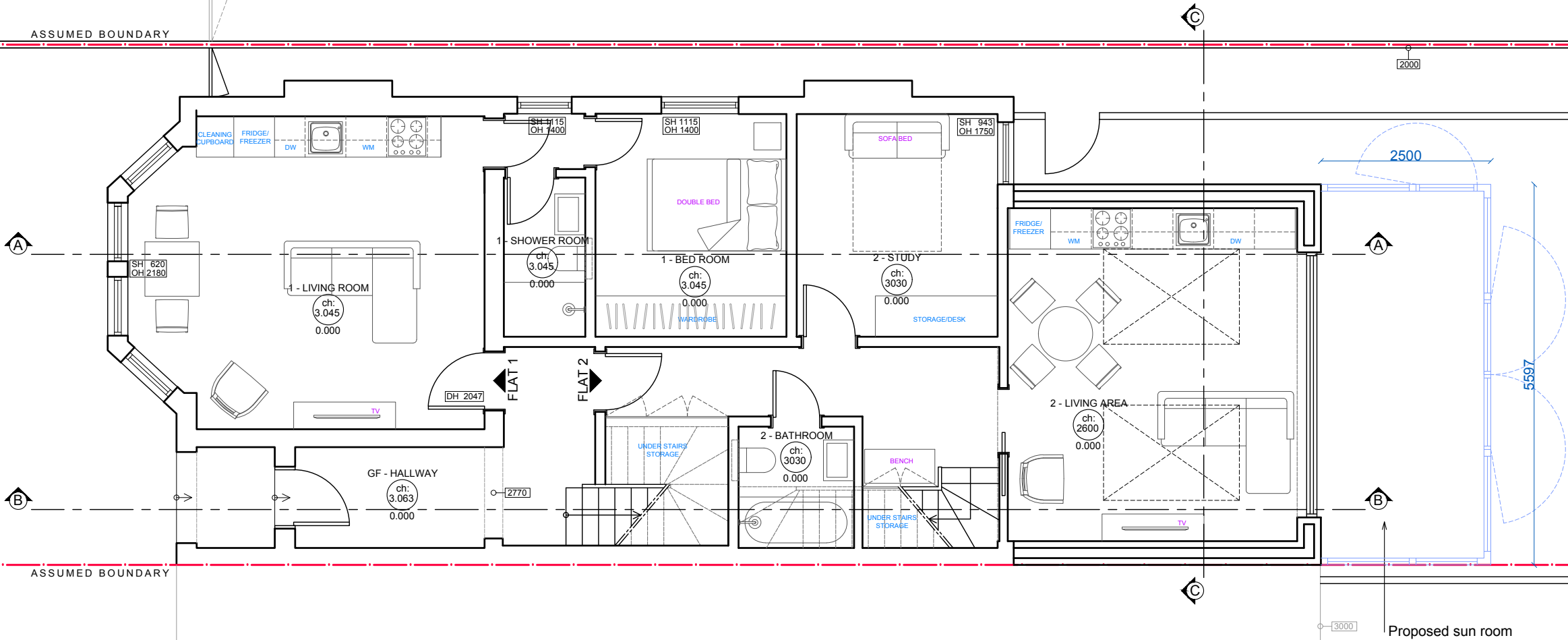


| FLATS LEGEND | |
|--------------|---|
| FLAT 1 | STUDIO FLAT - 37sqm. Ground floor |
| FLAT 2 | 1 BED FLAT - 65.5sqm. Duplex ground-first floor |
| FLAT 3 | STUDIO FLAT - 37sqm. First floor |
| FLAT 4 | STUDIO FLAT - 45sqm. Duplex first-second floor |

51 MINSTER ROAD
49 MINSTER ROAD
47 MINSTER ROAD

ASSUMED BOUNDARY

ASSUMED BOUNDARY



| LEGEND | |
|--------|----------------------------|
| | PROPOSED WALLS |
| | PROPOSED DOORS AND WINDOWS |



00
Location & site plan

01
Existing

02
Proposed

| | | | | | |
|----------------------------|--------------------------------------|--------------------|--|---------------------|-----------|
| Drawing: 49MR - 02 - 01 | Title: Proposed Ground Floor Plan | Scale: 1:75 @A3 | | Date: 03/03/2025 | Revision: |
|----------------------------|--------------------------------------|--------------------|--|---------------------|-----------|

- General Notes:**
- Do not scale off these drawings, check dimensions on site and advise any discrepancies before commencing work.
 - The contractor shall be responsible for the design and implementation of all temporary works, and the safety and stability of the new works and adjacent structures during construction.
 - Information to be read in conjunction with structural Engineer and Mep Engineer package information.
 - Where a product is specified to be obtained from a manufacturer or supplier, the contractor shall install the product in accordance with the instructions supplied by the manufacturer. Should there be any variation between the work specified on the drawings and the manufacturers instructions, the contractor shall refer the matter to the Designer for instruction before proceeding.

Project:

49 Minster Road
London, NW2 3SH

| FLATS LEGEND | |
|--------------|---|
| FLAT 1 | STUDIO FLAT - 37sqm. Ground floor |
| FLAT 2 | 2 BED FLAT - 65.5sqm. Duplex ground-first floor |
| FLAT 3 | STUDIO FLAT - 37sqm. First floor |
| FLAT 4 | STUDIO FLAT - 45sqm. Duplex first-second floor |

51 MINSTER ROAD

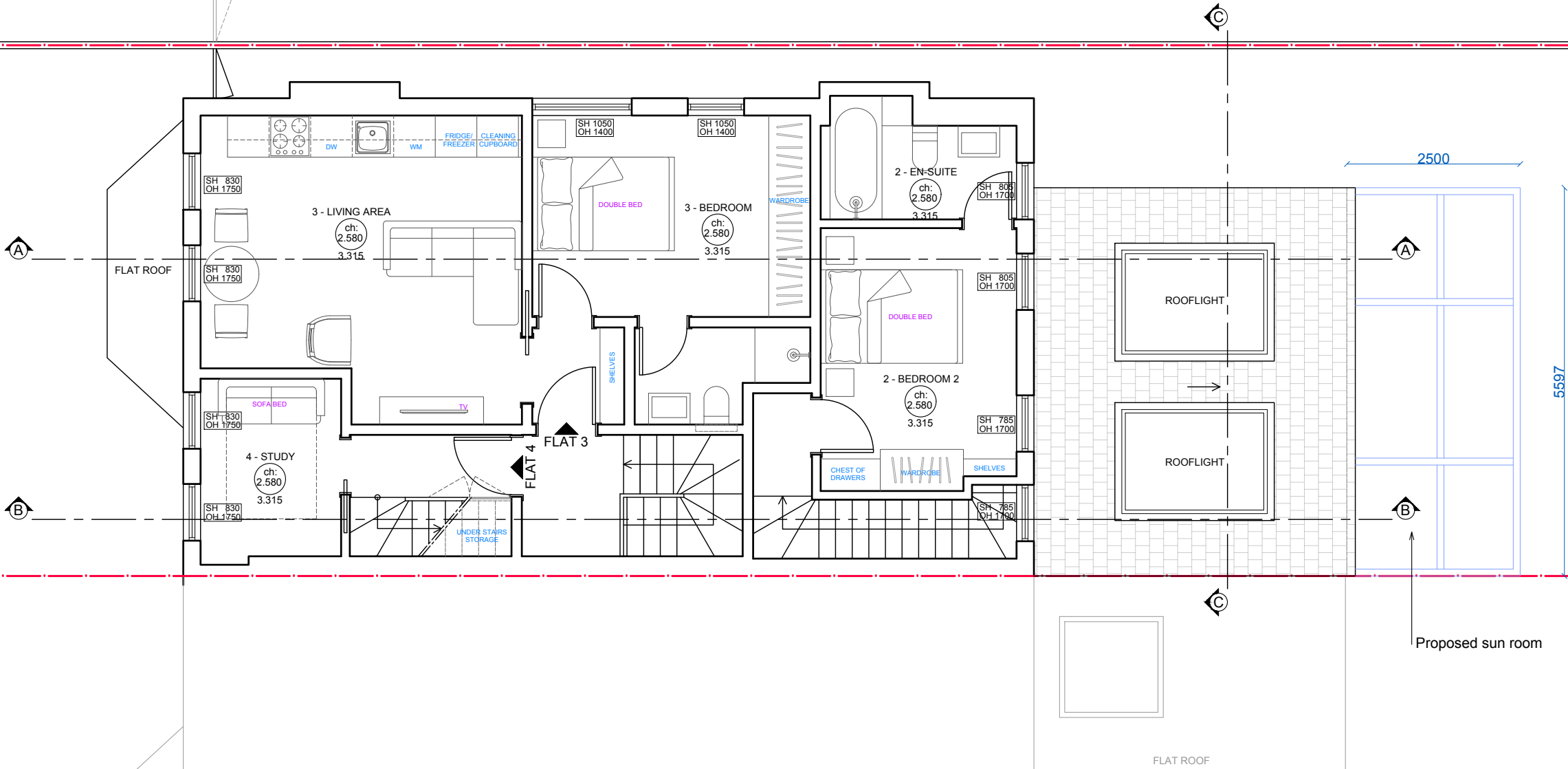
49 MINSTER ROAD

47 MINSTER ROAD

FLAT ROOF

FLAT ROOF

FLAT ROOF



| LEGEND | |
|--------|----------------------------|
| | PROPOSED WALLS |
| | PROPOSED DOORS AND WINDOWS |

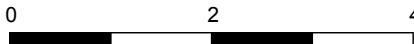


00
Location & site plan

01
Existing

02
Proposed

| | | | | |
|----------------------------|-------------------------------------|--------------------|---------------------|-----------|
| Drawing: 49MR - 02 - 02 | Title: Proposed First Floor Plan | Scale: 1:75 @A3 | Date: 03/03/2025 | Revision: |
|----------------------------|-------------------------------------|--------------------|---------------------|-----------|



General Notes:

- Do not scale off these drawings, check dimensions on site and advise any discrepancies before commencing work.
- The contractor shall be responsible for the design and implementation of all temporary works, and the safety and stability of the new works and adjacent structures during construction.
- Information to be read in conjunction with structural Engineer and Mep Engineer package information.
- Where a product is specified to be obtained from a manufacturer or supplier, the contractor shall intall the product in accordance with the instructions supplied by the manufacturer. Should there be any variation between the work specified on the drawings and the manufacturers instructions, the contractor shall refer the matter to the Designer for instruction before proceeding.

Project:

49 Minster Road
London, NW2 3SH

| FLATS LEGEND | |
|--------------|---|
| FLAT 1 | STUDIO FLAT - 37sqm. Ground floor |
| FLAT 2 | 2 BED FLAT - 65.5sqm. Duplex ground-first floor |
| FLAT 3 | STUDIO FLAT - 37sqm. First floor |
| FLAT 4 | STUDIO FLAT - 45sqm. Duplex first-second floor |

51 MINSTER ROAD

49 MINSTER ROAD

47 MINSTER ROAD

FLAT ROOF

FLAT ROOF

FLAT ROOF

A

B

C

C

UNDER EAVES
WARDROBE

DOUBLE BED

4 - BEDROOM
ch:
2.200
6.115

4 - BATHROOM
ch:
2.200
6.115

4 - LIVING AREA
ch:
2.200
6.115

FREEZER

DW

WM

ROOFLIGHT

ROOFLIGHT

2500

5597

Proposed sun room

| LEGEND | |
|--------|----------------------------|
| | PROPOSED WALLS |
| | PROPOSED DOORS AND WINDOWS |



00
Location & site plan

01
Existing

02
Proposed

Drawing:

49MR - 02 - 03

Title:

Proposed Loft Floor Plan

Scale:

1:75 @A3

0

2

4

Date:

03/03/2025

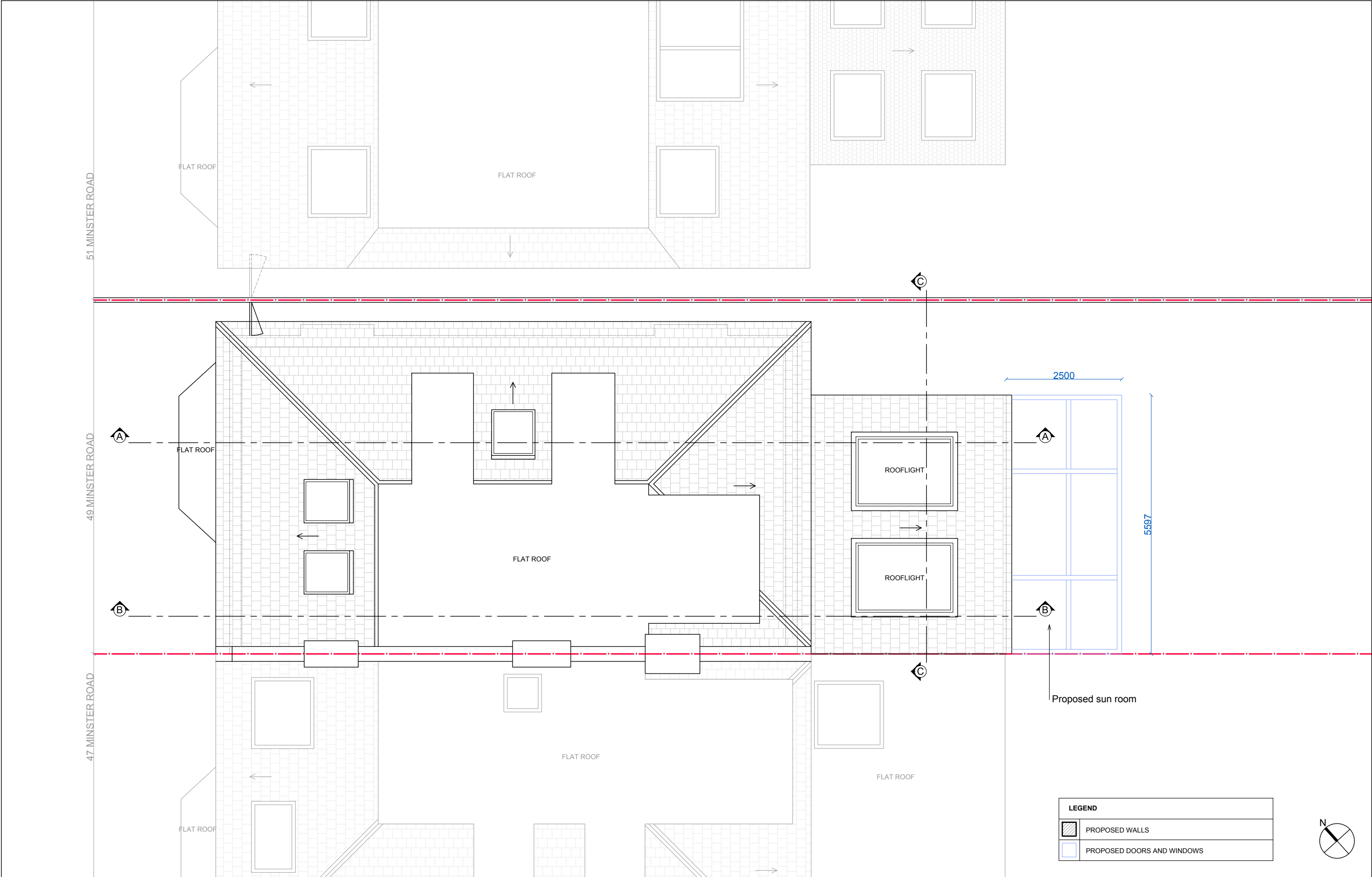
Revision:


General Notes:

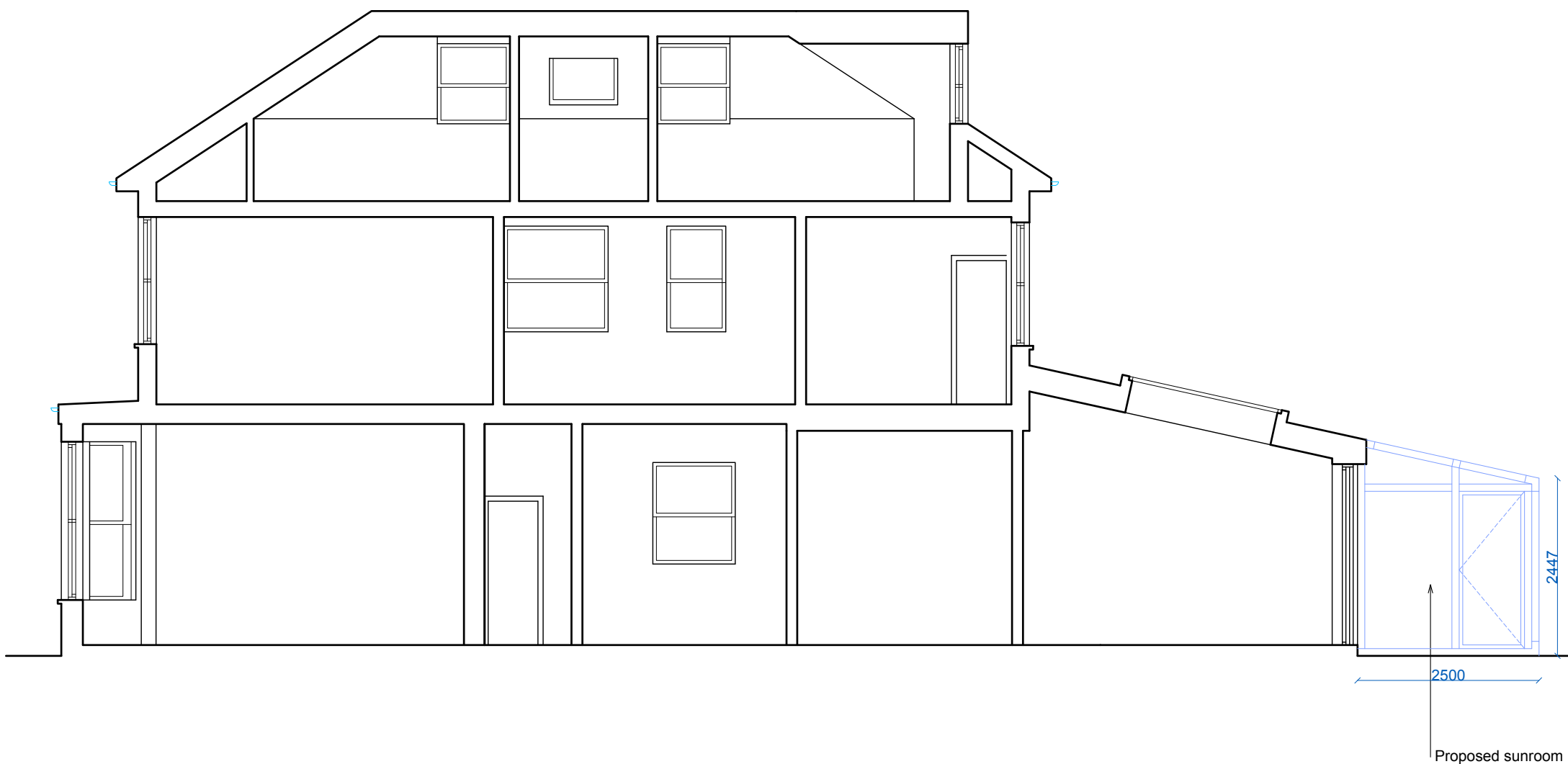
- Do not scale off these drawings, check dimensions on site and advise any discrepancies before commencing work.
- The contractor shall be responsible for the design and implementation of all temporary works, and the safety and stability of the new works and adjacent structures during construction.
- Information to be read in conjunction with structural Engineer and Mep Engineer package information.
- Where a product is specified to be obtained from a manufacturel or supplier, the contractor shall intall the product in accordance with the instructions supplied by the manufacturer. Should there be any variation between the work specified on the drawings and the manufacturers instructions, the contractor shall refer the matter to the Designer for instruction before proceeding.

Project:

49 Minster Road
London, NW2 3SH

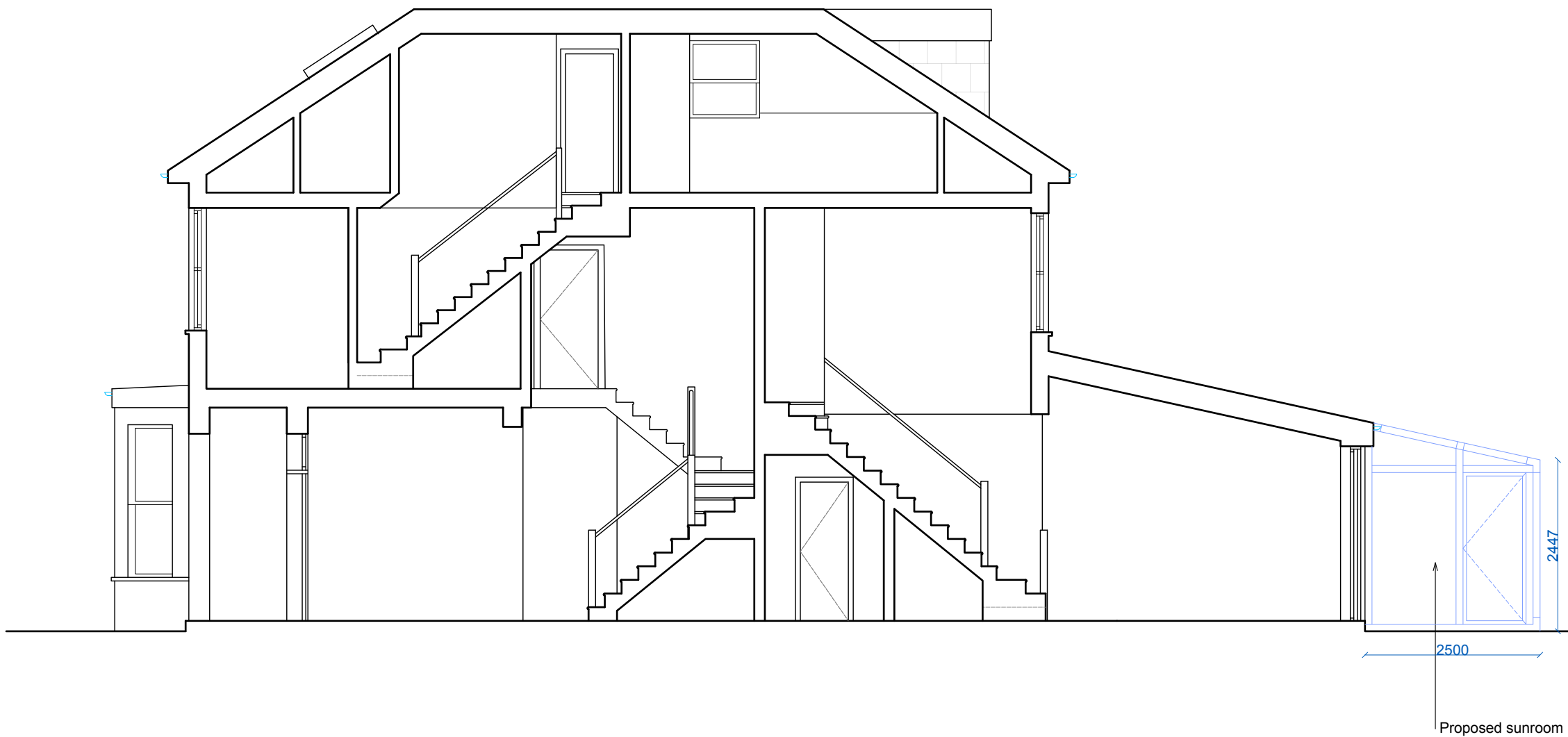


| | | | | | | | | | |
|----------------------------|------------------------------|--------------------|---|----------------|---------------------|---|--|--|--|
| 00 Location & site plan | | 01 Existing | | 02 Proposed | | General Notes: <ul style="list-style-type: none">Do not scale off these drawings, check dimensions on site and advise any discrepancies before commencing work.The contractor shall be responsible for the design and implementation of all temporary works, and the safety and stability of the new works and adjacent structures during construction.Information to be read in conjunction with structural Engineer and Mep Engineer package information.Where a product is specified to be obtained from a manufacturer or supplier, the contractor shall intall the product in accordance with the instructions supplied by the manufacturer. Should there be any variation between the work specified on the drawings and the manufacturers instructions, the contractor shall refer the matter to the Designer for instruction before proceeding. | | Project: 49 Minster Road London, NW2 3SH | |
| Drawing: 49MR - 02 - 04 | Title: Proposed Roof Plan | Scale: 1:75 @A3 |  | | Date: 03/03/2025 | Revision: | | | |



| LEGEND | |
|--------|----------------------------|
| | PROPOSED WALLS |
| | PROPOSED DOORS AND WINDOWS |

| | | | | | | | |
|----------------------------|-------------------------------|--------------------|--|----------------|---------------------|--|--|
| 00 Location & site plan | | 01 Existing | | 02 Proposed | | General Notes: <ul style="list-style-type: none">Do not scale off these drawings, check dimensions on site and advise any discrepancies before commencing work.The contractor shall be responsible for the design and implementation of all temporary works, and the safety and stability of the new works and adjacent structures during construction.Information to be read in conjunction with structural Engineer and Mep Engineer package information.Where a product is specified to be obtained from a manufacture or supplier, the contractor shall intall the product in accordance with the instructions supplied by the manufacturer. Should there be any variation between the work specified on the drawings and the manufacturers instructions, the contractor shall refer the matter to the Designer for instruction before proceeding. | Project: 49 Minster Road London, NW2 3SH |
| Drawing: 49MR - 02 - 05 | Title: Proposed Section AA | Scale: 1:75 @A3 | | | Date: 03/03/2025 | Revision: | |



| LEGEND | |
|--------|----------------------------|
| | PROPOSED WALLS |
| | PROPOSED DOORS AND WINDOWS |

00
Location & site plan

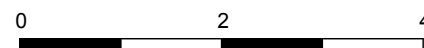
01
Existing

02
Proposed

Drawing:
49MR - 02 - 06

Title:
Proposed Section BB

Scale:
1:75 @A3



Date:
03/03/2025

Revision:



General Notes:

- Do not scale off these drawings, check dimensions on site and advise any discrepancies before commencing work.
- The contractor shall be responsible for the design and implementation of all temporary works, and the safety and stability of the new works and adjacent structures during construction.
- Information to be read in conjunction with structural Engineer and Mep Engineer package information.
- Where a product is specified to be obtained from a manufacture or supplier, the contractor shall intall the product in accordance with the instructions supplied by the manufacturer. Should there be any variation between the work specified on the drawings and the manufacturers instructions, the contractor shall refer the matter to the Designer for instruction before proceeding.

Project:

**49 Minster Road
London, NW2 3SH**



| LEGEND | |
|---|----------------------------|
|  | PROPOSED WALLS |
|  | PROPOSED DOORS AND WINDOWS |



| | | | | | | | |
|----------------------------|--|----------------|--|----------------|--|--|--|
| 00 Location & site plan | | 01 Existing | | 02 Proposed | | <div>General Notes:</div> <div><div><div></div><div></div><div></div><div></div><div></div><div></div><div></div><div></div><div></div><div></div><div></div><div></div><div></div><div></div><div></div><div></div><div></div><div></div><div></div><div></div><div></div><div></div><div></div><div></div><div></div><div></div><div></div><div></div><div></div><div></div><div></div><div></div><div></div><div></div><div></div><div></div><div></div><div></div><div></div><div></div><div></div><div></div><div></div><div></div><div></div><div></div><div></div><div></div><div></div><div></div><div></div><div></div><div></div><div></div><div></div><div></div><div></div><div></div><div></div><div></div><div></div><div></div><div></div><div></div><div></div><div></div><div></div><div></div><div></div><div></div><div></div><div></div><div></div><div></div><div></div><div></div><div></div><div></div><div></div><div></div><div></div><div></div><div></div><div></div><div></div><div></div><div></div><div></div><div></div><div></div><div></div><div></div><div></div><div></div><div></div><div></div><div></div><div></div><div></div><div></div><div></div><div></div><div></div><div></div><div></div><div></div><div></div><div></div><div></div><div></div><div></div><div></div><div></div><div></div><div></div><div></div><div></div><div></div><div></div><div></div><div></div><div></div><div></div><div></div><div></div><div></div><div></div><div></div><div></div><div></div><div></div><div></div><div></div><div></div><div></div><div></div><div></div><div></div><div></div><div></div><div></div><div></div><div></div><div></div><div></div><div></div><div></div><div></div><div></div><div></div><div></div><div></div><div></div><div></div><div></div><div></div><div></div><div></div><div></div><div></div><div></div><div></div><div></div><div></div><div></div><div></div><div></div><div></div><div></div><div></div><div></div><div></div><div></div><div></div><div></div><div></div><div></div><div></div><div></div><div></div><div></div><div></div><div></div><div></div><div></div><div></div><div></div><div></div><div></div><div></div><div></div><div></div><div></div><div></div><div></div><div></div><div></div><div></div><div></div><div></div><div></div><div></div><div></div><div></div><div></div><div></div><div></div><div></div><div></div><div></div><div></div><div></div><div></div><div></div><div></div><div></div><div></div><div></div><div></div><div></div><div></div><div></div><div></div><div></div><div></div><div></div><div></div><div></div><div></div><div></div><div></div><div></div><div></div><div></div><div></div><div></div><div></div><div></div><div></div><div></div><div></div><div></div><div></div><div></div><div></div><div></div><div></div><div></div><div></div><div></div><div></div><div></div><div></div><div></div><div></div><div></div><div></div><div></div><div></div><div></div><div></div><div></div><div></div><div></div><div></div><div></div><div></div><div></div><div></div><div></div><div></div><div></div><div></div><div></div><div></div><div></div><div></div><div></div><div></div><div></div><div></div><div></div><div></div><div></div><div></div><div></div><div></div><div></div><div></div><div></div><div></div><div></div><div></div><div></div><div></div><div></div><div></div><div></div><div></div><div></div><div></div><div></div><div></div><div></div><div></div><div></div><div></div><div></div><div></div><div></div><div></div><div></div><div></div><div></div><div></div><div></div><div></div><div></div><div></div><div></div><div></div><div></div><div></div><div></div><div></div><div></div><div></div><div></div><div></div><div></div><div></div><div></div><div></div><div></div><div></div><div></div><div></div><div></div><div></div><div></div><div></div><div></div><div></div><div></div><div></div><div></div><div></div><div></div><div></div><div></div><div></div><div></div><div></div><div></div><div></div><div></div><div></div><div></div><div></div><div></div><div></div><div></div><div></div><div></div><div></div><div></div><div></div><div></div><div></div><div></div><div></div><div></div><div></div><div></div><div></div><div></div><div></div><div></div><div></div><div></div><div></div><div></div><div></div><div></div><div></div><div></div><div></div><div></div><div></div><div></div><div></div><div></div><div></div><div></div><div></div><div></div><div></div><div></div><div></div><div></div><div></div><div></div><div></div><div></div><div></div><div></div><div></div><div></div><div></div><div></div><div></div><div></div><div></div><div></div><div></div><div></div><div></div><div></div><div></div><div></div><div></div><div></div><div></div><div></div><div></div><div></div><div></div><div></div><div></div><div></div><div></div><div></div><div></div><div></div><div></div><div></div><div></div><div></div><div></div><div></div><div></div><div></div><div></div><div></div><div></div><div></div><div></div><div></div><div></div><div></div><div></div><div></div><div></div><div></div><div></div><div></div><div></div><div></div><div></div><div></div><div></div><div></div><div></div><div></div><div></div><div></div><div></div><div></div><div></div><div></div><div></div><div></div><div></div><div></div><div></div><div></div><div></div><div></div><div></div><div></div><div></div><div></div><div></div><div></div><div></div><div></div><div></div><div></div><div></div><div></div><div></div><div></div><div></div><div></div><div></div><div></div><div></div><div></div><div></div><div></div><div></div><div></div><div></div><div></div><div></div><div></div><div></div><div></div><div></div><div></div><div></div><div></div><div></div><div></div><div></div><div></div><div></div><div></div><div></div><div></div><div></div><div></div><div></div><div></div><div></div><div></div><div></div><div></div><div></div><div></div><div></div><div></div><div></div><div></div><div></div><div></div><div></div><div></div><div></div><div></div><div></div><div></div><div></div><div></div><div></div><div></div><div></div><div></div><div></div><div></div><div></div><div></div><div></div><div></div><div></div><div></div><div></div><div></div><div></div><div></div><div></div><div></div><div></div><div></div><div></div><div></div><div></div><div></div><div></div><div></div><div></div><div></div><div></div><div></div><div></div><div></div><div></div><div></div><div></div><div></div><div></div><div></div><div></div><div></div><div></div><div></div><div></div><div></div><div></div><div></div><div></div><div></div><div></div><div></div><div></div><div></div><div></div><div></div><div></div><div></div><div></div><div></div><div></div><div></div><div></div><div></div><div></div><div></div><div></div><div></div><div></div><div></div><div></div><div></div><div></div><div></div><div></div><div></div><div></div><div></div><div></div><div></div><div></div><div></div><div></div><div></div><div></div><div></div><div></div><div></div><div></div><div></div><div></div><div></div><div></div><div></div><div></div><div></div><div></div><div></div><div></div><div></div><div></div><div></div><div></div><div></div><div></div><div></div><div></div><div></div><div></div><div></div><div></div><div></div><div></div><div></div><div></div><div></div><div></div><div></div><div></div><div></div><div></div><div></div><div></div><div></div><div></div><div></div><div></div><div></div><div></div><div></div><div></div><div></div><div></div><div></div><div></div><div></div><div></div><div></div><div></div><div></div><div></div><div></div><div></div><div></div><div></div><div></div><div></div><div></div><div></div><div></div><div></div><div></div><div></div><div></div><div></div><div></div><div></div><div></div><div></div><div></div><div></div><div></div><div></div><div></div><div></div><div></div><div></div><div></div><div></div><div></div><div></div><div></div><div></div><div></div><div></div><div></div><div></div><div></div><div></div><div></div><div></div><div></div><div></div><div></div><div></div><div></div><div></div><div></div><div></div><div></div><div></div><div></div><div></div><div></div><div></div><div></div><div></div><div></div><div></div><div></div><div></div><div></div><div></div><div></div><div></div><div></div><div></div><div></div><div></div><div></div><div></div><div></div><div></div><div></div><div></div><div></div><div></div><div></div><div></div><div></div><div></div><div></div><div></div><div></div><div></div><div></div><div></div><div></div><div></div><div></div><div></div><div></div><div></div><div></div><div></div><div></div><div></div><div></div><div></div><div></div><div></div><div></div><div></div><div></div><div></div><div></div><div></div><div></div><div></div><div></div><div></div><div></div><div></div><div></div><div></div><div></div><div></div><div></div><div></div><div></div><div></div><div></div><div></div><div></div><div></div><div></div><div></div><div></div><div></div><div></div><div></div><div></div><div></div><div></div><div></div><div></div><div></div><div></div><div></div><div></div><div></div><div></div><div></div><div></div><div></div><div></div><div></div><div></div><div></div><div></div><div></div><div></div><div></div><div></div><div></div><div></div><div></div><div></div><div></div><div></div><div></div><div></div><div></div><div></div><div></div><div></div><div></div><div></div><div></div><div></div><div></div><div></div><div></div><div></div><div></div><div></div><div></div><div></div><div></div><div></div><div></div><div></div><div></div><div></div><div></div><div></div><div></div><div></div><div></div><div></div><div></div><div></div><div></div><div></div><div></div><div></div><div></div><div></div><div></div><div></div><div></div><div></div><div></div><div></div><div></div><div></div><div></div><div></div><div></div><div></div><div></div><div></div><div></div><div></div><div></div><div></div><div></div><div></div><div></div><div></div><div></div><div></div><div></div><div></div><div></div><div></div><div></div><div></div><div></div><div></div><div></div><div></div><div></div><div></div><div></div><div></div><div></div><div></div><div></div><div></div><div></div><div></div><div></div><div></div><div></div><div></div><div></div><div></div><div></div><div></div><div></div><div></div><div></div><div></div><div></div><div></div><div></div><div></div><div></div><div></div><div></div><div></div><div></div><div></div><div></div><div></div><div></div><div></div><div></div><div></div><div></div><div></div><div></div><div></div><div></div><div></div><div></div><div></div><div></div><div></div><div></div><div></div><div></div><div></div><div></div><div></div><div></div><div></div><div></div><div></div><div></div><div></div><div></div><div></div><div></div><div></div><div></div><div></div><div></div><div></div><div></div><div></div><div></div><div></div><div></div><div></div><div></div><div></div><div></div><div></div><div></div><div></div><div></div><div></div><div></div><div></div><div></div><div></div><div></div><div></div><div></div><div></div><div></div><div></div><div></div><div></div><div></div><div></div><div></div><div></div><div></div><div></div><div></div><div></div><div></div><div></div><div></div><div></div><div></div><div></div><div></div><div></div><div></div><div></div><div></div><div></div><div></div><div></div><div></div><div></div><div></div><div></div><div></div><div></div><div></div><div></div><div></div><div></div><div></div><div></div><div></div><div></div><div></div><div></div><div></div><div></div><div></div><div></div><div></div><div></div><div></div><div></div><div></div><div></div><div></div><div></div><div></div><div></div><div></div><div></div><div></div><div></div><div></div><div></div><div></div><div></div><div></div><div></div><div></div><div></div><div></div><div></div><div></div><div></div><div></div><div></div><div></div><div></div><div></div><div></div><div></div><div></div><div></div><div></div><div></div><div></div><div></div><div></div><div></div><div></div><div></div><div></div><div></div><div></div><div></div><div></div><div></div><div></div><div></div><div></div><div></div><div></div><div></div><div></div><div></div><div></div><div></div><div></div><div></div><div></div><div></div><div></div><div></div><div></div><div></div><div></div><div></div><div></div><div></div><div></div><div></div><div></div><div></div><div></div><div></div><div></div><div></div><div></div><div></div><div></div><div></div><div></div><div></div><div></div><div></div><div></div><div></div><div></div><div></div><div></div><div></div><div></div><div></div><div></div><div></div><div></div><div></div><div></div><div></div><div></div><div></div><div></div><div></div><div></div><div></div><div></div><div></div><div></div><div></div><div></div><div></div><div></div></div></div> | |
|----------------------------|--|----------------|--|----------------|--|--|--|



| LEGEND | |
|--------|----------------------------|
| | PROPOSED WALLS |
| | PROPOSED DOORS AND WINDOWS |

| | | | | | | | |
|----------------------------|-----------------------------------|--------------------|--|---------------------|-----------|---|--|
| 00 Location & site plan | | 01 Existing | | 02 Proposed | | General Notes: <ul style="list-style-type: none">Do not scale off these drawings, check dimensions on site and advise any discrepancies before commencing work.The contractor shall be responsible for the design and implementation of all temporary works, and the safety and stability of the new works and adjacent structures during construction.Information to be read in conjunction with structural Engineer and Mep Engineer package information.Where a product is specified to be obtained from a manufacturel or supplier, the contractor shall intall the product in accordance with the instructions supplied by the manufacturer. Should there be any variation between the work specified on the drawings and the manufacturers instructions, the contractor shall refer the matter to the Designer for instruction before proceeding. | Project: 49 Minster Road London, NW2 3SH |
| Drawing: 49MR - 02 - 08 | Title: Proposed Rear Elevation | Scale: 1:75 @A3 | | Date: 03/03/2025 | Revision: | | |



| LEGEND | |
|---|----------------------------|
|  | PROPOSED WALLS |
|  | PROPOSED DOORS AND WINDOWS |

00
Location & site plan

01
Existing

02
Proposed

Drawing:

49MR - 02 - 09

Title:

Proposed Side Elevation

Scale:

1:75 @A3

0

2

4

Date:

03/03/2025

Revision:

General Notes:

- Do not scale off these drawings, check dimensions on site and advise any discrepancies before commencing work.
- The contractor shall be responsible for the design and implementation of all temporary works, and the safety and stability of the new works and adjacent structures during construction.
- Information to be read in conjunction with structural Engineer and Mep Engineer package information.
- Where a product is specified to be obtained from a manufacture or supplier, the contractor shall intall the product in accordance with the instructions supplied by the manufacturer. Should there be any variation between the work specified on the drawings and the manufacturers instructions, the contractor shall refer the matter to the Designer for instruction before proceeding.

Project:

49 Minster Road
London, NW2 3SH



| LEGEND | |
|--------|----------------------------|
| | PROPOSED WALLS |
| | PROPOSED DOORS AND WINDOWS |

00
Location & site plan

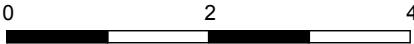
01
Existing

02
Proposed

Drawing:
49MR - 02 - 10

Title:
Proposed Front Elevation

Scale:
1:75 @A3



Date:
03/03/2025

Revision:

General Notes:

- Do not scale off these drawings, check dimensions on site and advise any discrepancies before commencing work.
- The contractor shall be responsible for the design and implementation of all temporary works, and the safety and stability of the new works and adjacent structures during construction.
- Information to be read in conjunction with structural Engineer and Mep Engineer package information.
- Where a product is specified to be obtained from a manufacturel or supplier, the contractor shall intall the product in accordance with the instructions supplied by the manufacturer. Should there be any variation between the work specified on the drawings and the manufacturers instructions, the contractor shall refer the matter to the Designer for instruction before proceeding.

Project:
**49 Minster Road
London, NW2 3SH**