

Appendix A: Site Walkover Records



Image 1: Eastern portion of the Site which is used vehicle parking and used for the storage of timber. Note that there is a skip which contains domestic waste.



Image 2: Contents of the skip.



Image 3: Storefront of the current builders' merchants.

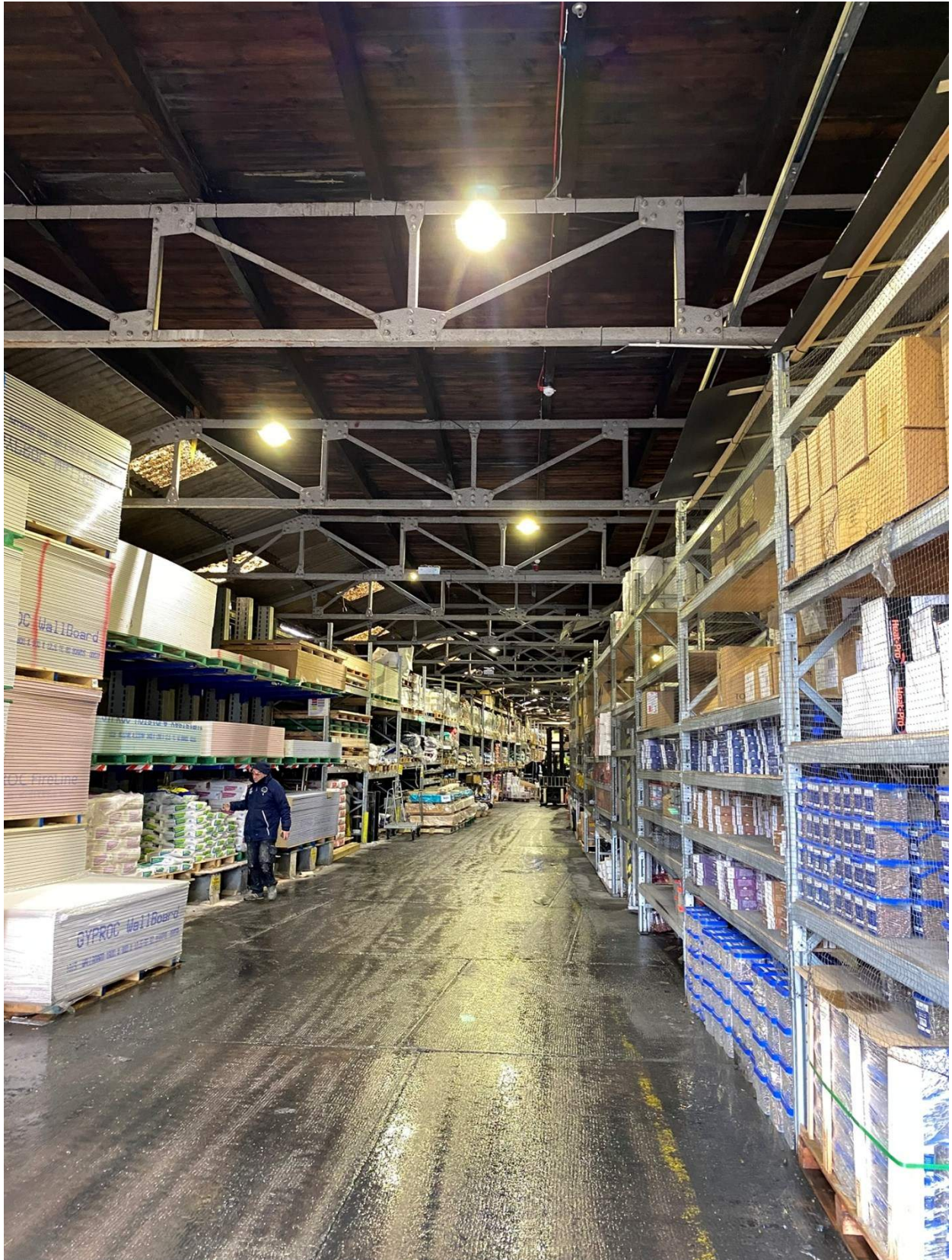


Image 4: Interior of the warehouse.



Figure 5: Electrical Switchroom.



Image 6: Electrical Substation at the northeastern corner of the Site.

Appendix B: Proposed Development Documentation

LEGEND

PBSA Accommodation

- 1B1P
1B1PW

C3 Affordable Residential

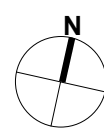
- 1B2P 2B3PW 2B4P
3B5P 3B6P

- Roof Residential Amenity External

- Site Boundary (Site Survey)
Site Boundary (Site Title)
3m Offset from Site Boundary (Site Survey)

DR - Dry Riser FCL - Finished Ceiling Level FFL - Finished Floor Level FFL - Finished Floor Level SL - Soffit Level SSL - Structural Steel Level TOS - Top Of Beam TOS - Top Of Concrete TOS - Top Of Steel TOSc - Top Of Scream
Notes: -
Do not scale from drawings unless by agreement with HTA. Use figured dimensions only. Check all dimensions on site prior to commencing the works. Drawing to be read in conjunction with other relevant consultant information.

This drawing is the copyright of HTA Design LLP and must not be copied or reproduced in part, or in whole, without the express permission of HTA Design LLP. Drawing to be read in conjunction with specification.



FOR INFORMATION

P13	05.03.25	TCO	Planters Removed at Ground Floor, Roof Terraces Added
P12	27.02.25	TCO	Design Freeze Issue
P11	07.02.25	RBN	Issue for Coordination
P10	03.02.25	RBN	Issue for Landscape Coordination
P09	10.01.25	RBN	Issue For Coordination
P08	06.01.25	TCO	WIP Plan Set
P07	06.01.25	TCO	Update to roof terraces
P06	28.11.24	TCO	Issue For Coordination
P05	07.11.24	TCO	Issue For Coordination
P04	29.10.24	TCO	Issue For Landscape Coordination
P03	10.10.24	RBN	Issue For Coordination
P02	20.09.24	TCO	Amendments to PBSA + Ground
P01	13.09.24		Initial Issue
revision	date	drawn	description

C3 Level 06
GA Plan

FST-BRC-HTA-C3-06-SK-A-0228 P13
number revision

Fifth State
14 Blackburn Road

FST-BRC 1:200 @ A1
job reference scale drawn



LEGEND

PBSA Accommodation

- 1B1P
- 1B1PW

C3 Affordable Residential

- 1B2P
- 2B3PW
- 2B4P
- 3B5P
- 3B6P
- Roof
- Residential Amenity External

- Site Boundary (Site Survey)
- Site Boundary (Site Title)
- 3m Offset from Site Boundary (Site Survey)

DR - Dry Riser
FCL - Finished Ceiling Level
TOS - Top Of Beam
DR - Dry Riser Inlet
FFL - Finished Floor Level
TOS - Top Of Concrete
SL - Soffit Level
SSL - Structural Slat Level
TOS - Top Of Steel
TOS - Top Of Scream
Notes: -
Do not scale from drawings unless by agreement with HTA. Use figured dimensions only. Check all dimensions on site prior to commencing the works. Drawing to be read in conjunction with other relevant consultant information.

This drawing is the copyright of HTA Design LLP and must not be copied or reproduced in part, or in whole, without the express permission of HTA Design LLP. Drawing to be read in conjunction with specification.

FOR INFORMATION

P12	05.03.25	TCO	Planters Removed at Ground Floor, Roof Terraces Added
P11	27.02.25	TCO	Design Freeze Issue
P10	07.02.25	RBN	Issue for Coordination
P09	03.02.25	RBN	Issue for Landscape Coordination
P08	10.01.25	RBN	Issue For Coordination
P07	06.01.25	TCO	WIP Plan Set
P06	28.11.24	TCO	Issue For Coordination
P05	07.11.24	TCO	Issue For Coordination
P04	29.10.24	TCO	Issue For Landscape Coordination
P03	10.10.24	RBN	Issue For Coordination
P02	20.09.24	TCO	Amendments to PBSA + Ground
P01	13.09.24		Initial Issue
revision	date	drawn	description

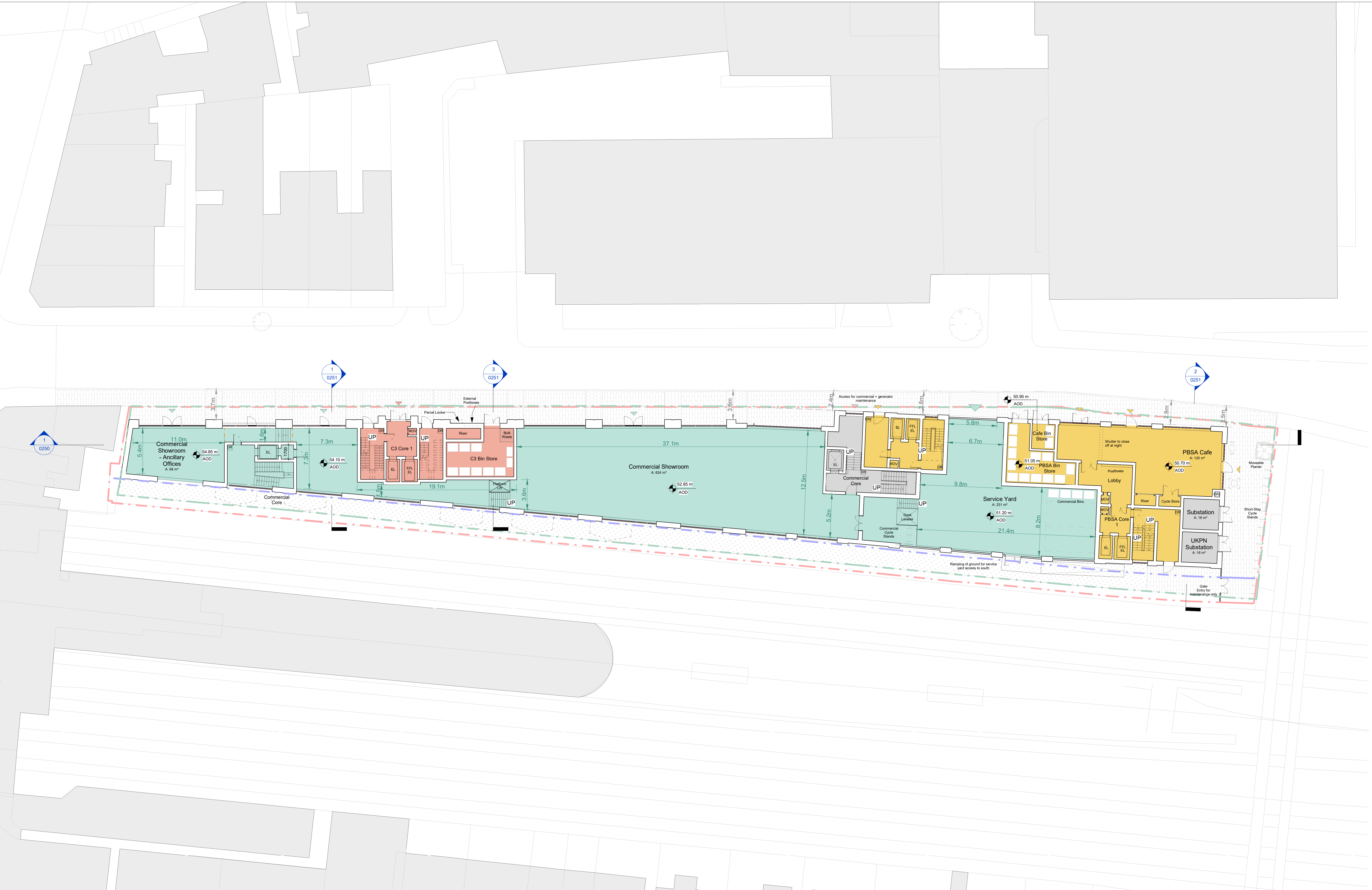
PBSA Level 01
GA Plan

FST-BRC-HTA-PB-01-SK-A-0233 P12
number revision

Fifth State
14 Blackburn Road

FST-BRC 1:200 @ A1
job reference scale drawn





revision	date	drawn	description
P10	10.01.25	RBN	Issue For Coordination
P11	29.01.25	RBN	Issue for Service Yard Tracking
P12	05.02.25	TCO	Issue for Service Yard Tracking
P13	07.02.25	RBN	Issue for Coordination
P14	20.02.25	TCO	Issue for Fire Coordination
P15	21.02.25	TCO	Issue for Coordination
P16	27.02.25	TCO	Design Freeze Issue
P17	05.03.25	TCO	Planters Removed at Ground Floor, Roof Terraces Added

LEGEND	
	PBSA Tenure
	C3 Tenure
	Commercial
	Shared Plant
	PBSA Entrance / Access
	C3 Entrance / Access
	Commercial Entrance / Access
	Site Boundary (Site Survey)
	Site Boundary (Site Title)
	3m Offset from Site Boundary (Site Survey)

Notes: -
Do not scale from drawings unless by agreement with HTA. Use figured dimensions only. Check all dimensions on site prior to commencing the works. Drawing to be read in conjunction with other relevant consultant information.

This drawing is the copyright of HTA Design LLP and must not be copied or reproduced in part, or in whole, without the express permission of HTA Design LLP. Drawing to be read in conjunction with specification.

0m 4m 8m 12m 16m 20m

Level 00 (Street Level)
GA Plan

Fifth State
14 Blackburn Road

FOR INFORMATION

FST-BRC-HTA-XX-00-SK-A-0200
number

1:200 @ A1
scale
HTA Design LLP
www.hta.co.uk
London | Edinburgh | Manchester | Bristol

FST-BRC
job reference

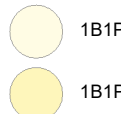
TCO
drawn

P17
revision

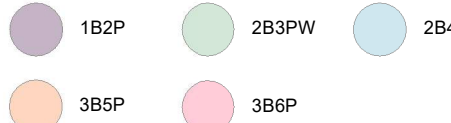
hta

LEGEND

PBSA Accommodation



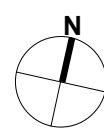
C3 Affordable Residential



DR - Dry Riser DRI - Dry Riser Inlet
FCL - Finished Ceiling Level FFL - Finished Floor Level SL - Soffit Level SSL - Structural Slat Level
TOB - Top Of Beam TOC - Top Of Concrete TOS - Top Of Steel TOSc - Top Of Screed

Notes: -
Do not scale from drawings unless by agreement with HTA. Use figured dimensions only. Check all dimensions on site prior to commencing the works. Drawing to be read in conjunction with other relevant consultant information.

This drawing is the copyright of HTA Design LLP and must not be copied or reproduced in part, or in whole, without the express permission of HTA Design LLP. Drawing to be read in conjunction with specification.



FOR INFORMATION

P13	05.03.25	TCO	Planters Removed at Ground Floor, Roof Terraces Added
P12	27.02.25	TCO	Design Freeze Issue
P11	07.02.25	RBN	Issue for Coordination
P10	03.02.25	RBN	Issue for Landscape Coordination
P09	10.01.25	RBN	Issue For Coordination
P08	06.01.25	TCO	WIP Plan Set
P07	06.01.25	TCO	Update to roof terraces
P06	28.11.24	TCO	Issue For Coordination
P05	07.11.24	TCO	Issue For Coordination
P04	29.10.24	TCO	Issue For Landscape Coordination
P03	10.10.24	RBN	Issue For Coordination
P02	20.09.24	TCO	Amendments to PBSA + Ground
P01	13.09.24		Initial Issue
revision	date	drawn	description

C3 Level 06
GA Plan

FST-BRC-HTA-C3-06-SK-A-0228 P13
number revision

Fifth State
14 Blackburn Road

FST-BRC 1:200 @ A1
job reference scale drawn



LEGEND

PBSA Accommodation

- 1B1P
- 1B1PW

C3 Affordable Residential

- 1B2P
- 2B3PW
- 2B4P
- 3B5P
- 3B6P
- Roof
- Residential Amenity External

- Site Boundary (Site Survey)
- Site Boundary (Site Title)
- 3m Offset from Site Boundary (Site Survey)

DR - Dry Riser
FCL - Finished Ceiling Level
TOS - Top Of Beam

DRi - Dry Riser Inlet
FPL - Finished Floor Level
TOS - Top Of Concrete

SL - Soffit Level
SSL - Structural Slat Level
TOS - Top Of Steel

Notes:-
Do not scale from drawings unless by agreement with HTA. Use figured dimensions only. Check all dimensions on site prior to commencing the works. Drawing to be read in conjunction with other relevant consultant information.

This drawing is the copyright of HTA Design LLP and must not be copied or reproduced in part, or in whole, without the express permission of HTA Design LLP. Drawing to be read in conjunction with specification.



FOR INFORMATION

P12	05.03.25	TCO	Planters Removed at Ground Floor, Roof Terraces Added
P11	27.02.25	TCO	Design Freeze Issue
P10	07.02.25	RBN	Issue for Coordination
P09	03.02.25	RBN	Issue for Landscape Coordination
P08	10.01.25	RBN	Issue For Coordination
P07	06.01.25	TCO	WIP Plan Set
P06	28.11.24	TCO	Issue For Coordination
P05	07.11.24	TCO	Issue For Coordination
P04	29.10.24	TCO	Issue For Landscape Coordination
P03	10.10.24	RBN	Issue For Coordination
P02	20.09.24	TCO	Amendments to PBSA + Ground
P01	13.09.24		Initial Issue
revision	date	drawn	description

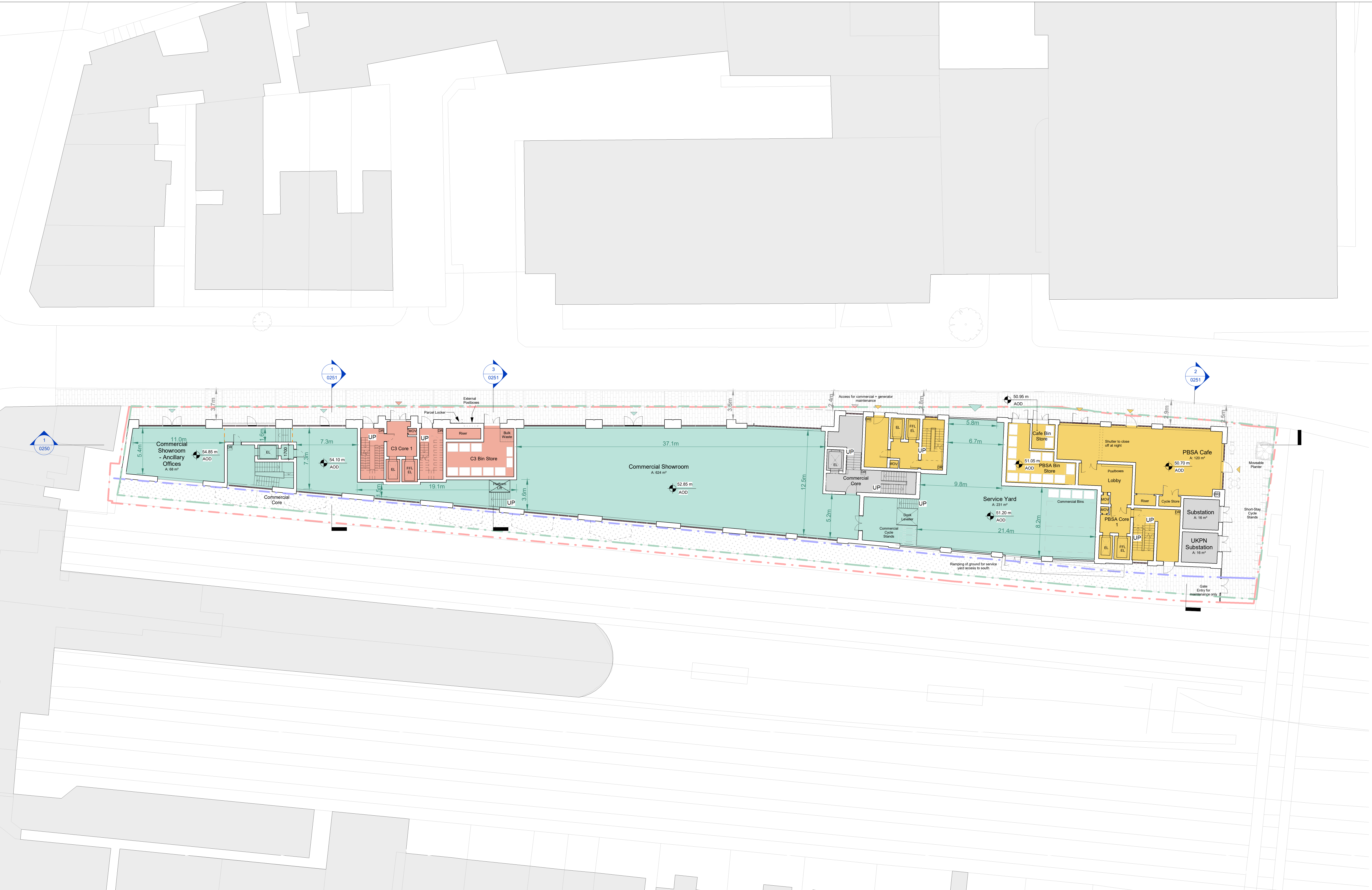
PBSA Level 01
GA Plan

FST-BRC-HTA-PB-01-SK-A-0233 P12
number revision

Fifth State
14 Blackburn Road

FST-BRC 1:200 @ A1
job reference scale drawn





revision	date	drawn	description
P10	10.01.25	RBN	Issue For Coordination
P11	29.01.25	RBN	Issue for Service Yard Tracking
P12	05.02.25	TCO	Issue for Service Yard Tracking
P13	07.02.25	RBN	Issue for Coordination
P14	20.02.25	TCO	Issue for Fire Coordination
P15	21.02.25	TCO	Issue for Coordination
P16	27.02.25	TCO	Design Freeze Issue
P17	05.03.25	TCO	Planters Removed at Ground Floor, Roof Terraces Added

LEGEND	
	PBSA Tenure
	C3 Tenure
	Commercial
	Shared Plant
	PBSA Entrance / Access
	C3 Entrance / Access
	Commercial Entrance / Access
	Site Boundary (Site Survey)
	Site Boundary (Site Title)
	3m Offset from Site Boundary (Site Survey)

Notes: -
Do not scale from drawings unless by agreement with HTA. Use figured dimensions only. Check all dimensions on site prior to commencing the works. Drawing to be read in conjunction with other relevant consultant information.

This drawing is the copyright of HTA Design LLP and must not be copied or reproduced in part, or in whole, without the express permission of HTA Design LLP. Drawing to be read in conjunction with specification.

0m 4m 8m 12m 16m 20m

Level 00 (Street Level)
GA Plan

Fifth State
14 Blackburn Road

FOR INFORMATION

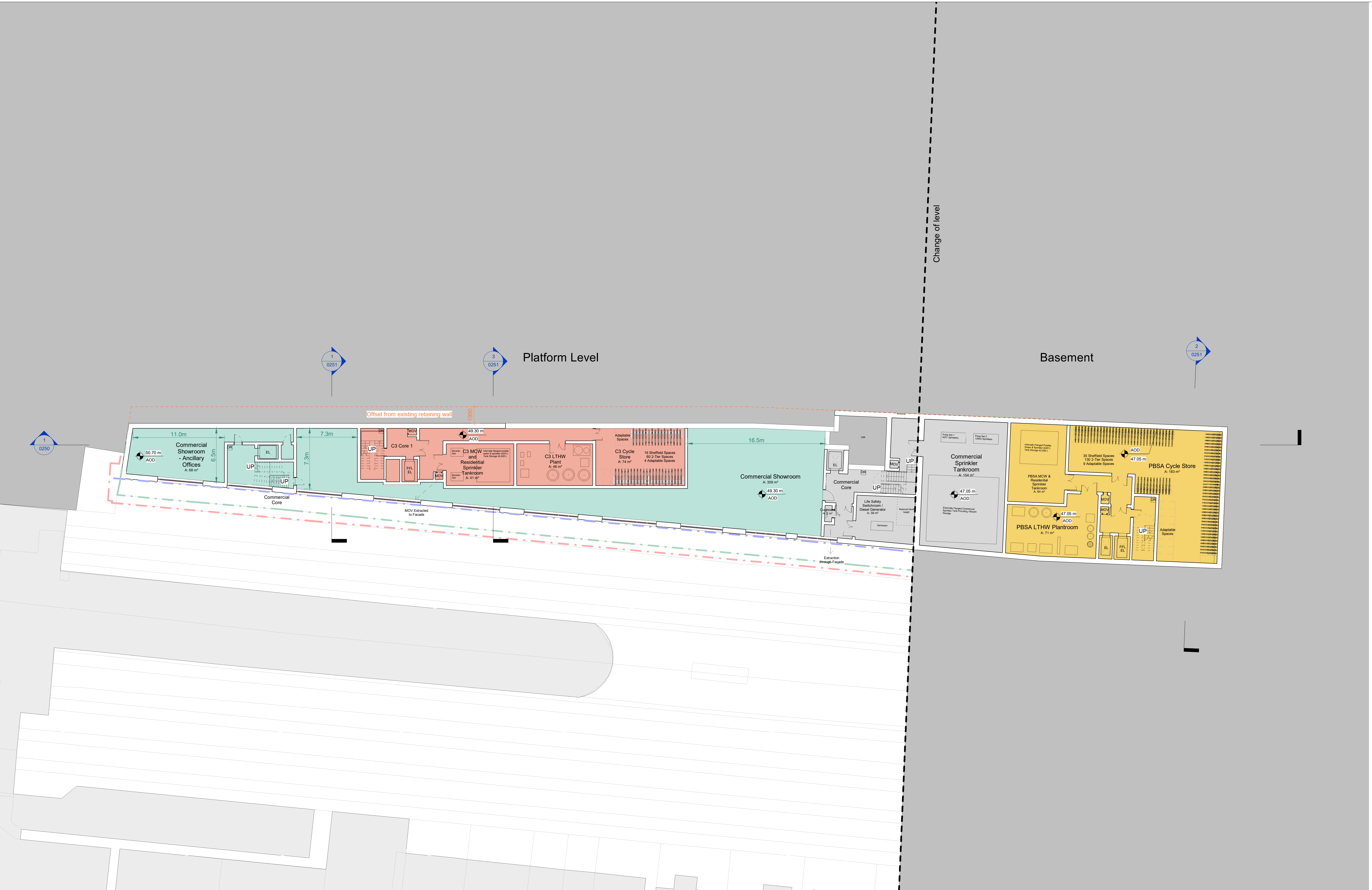
FST-BRC-HTA-XX-00-SK-A-0200
number

1:200 @ A1
scale
HTA Design LLP
www.hta.co.uk
London | Edinburgh | Manchester | Bristol

FST-BRC
job reference

TCO
drawn

P17
revision



revision	date	drawn	description
P04	29.10.24	TCO	Issue For Landscape Coordination
P05	07.11.24	TCO	Issue For Coordination
P06	19.11.24	TCO	Issue For Sustainability
P07	28.11.24	TCO	Issue For Coordination
P08	06.01.25	TCO	WIP Plan Set
P09	10.01.25	RBN	Issue For Coordination
P10	07.02.25	RBN	Issue for Coordination
P11	21.02.25	TCO	Issue for Coordination
P12	27.02.25	TCO	Design Freeze Issue

LEGEND

PBSA Tenure

C3 Tenure

Commercial

Shared Plant

PBSA Entrance / Access

C3 Entrance / Access

Commercial Entrance / Access

Site Boundary (Site Survey)

Site Boundary (Site Title)

3m Offset from Site Boundary (Site Survey)

Notes: -
Do not scale from drawings unless by agreement with HTA. Use
figured dimensions only. Check all dimensions on site prior to
commencing the works. Drawing to be read in conjunction with other
relevant consultant information.

This drawing is the copyright of HTA Design LLP and must not be
copied or reproduced in part, or in whole, without the express
permission of HTA Design LLP. Drawing to be read in conjunction with
specification.

0m

4m

8m

12m

16m

20m

Basement & Platform Level
GA Plan

Fifth State
14 Blackburn Road

FOR INFORMATION

FST-BRC-HTA-XX-B-SK-A-0198
number

1:200 @ A1
scale

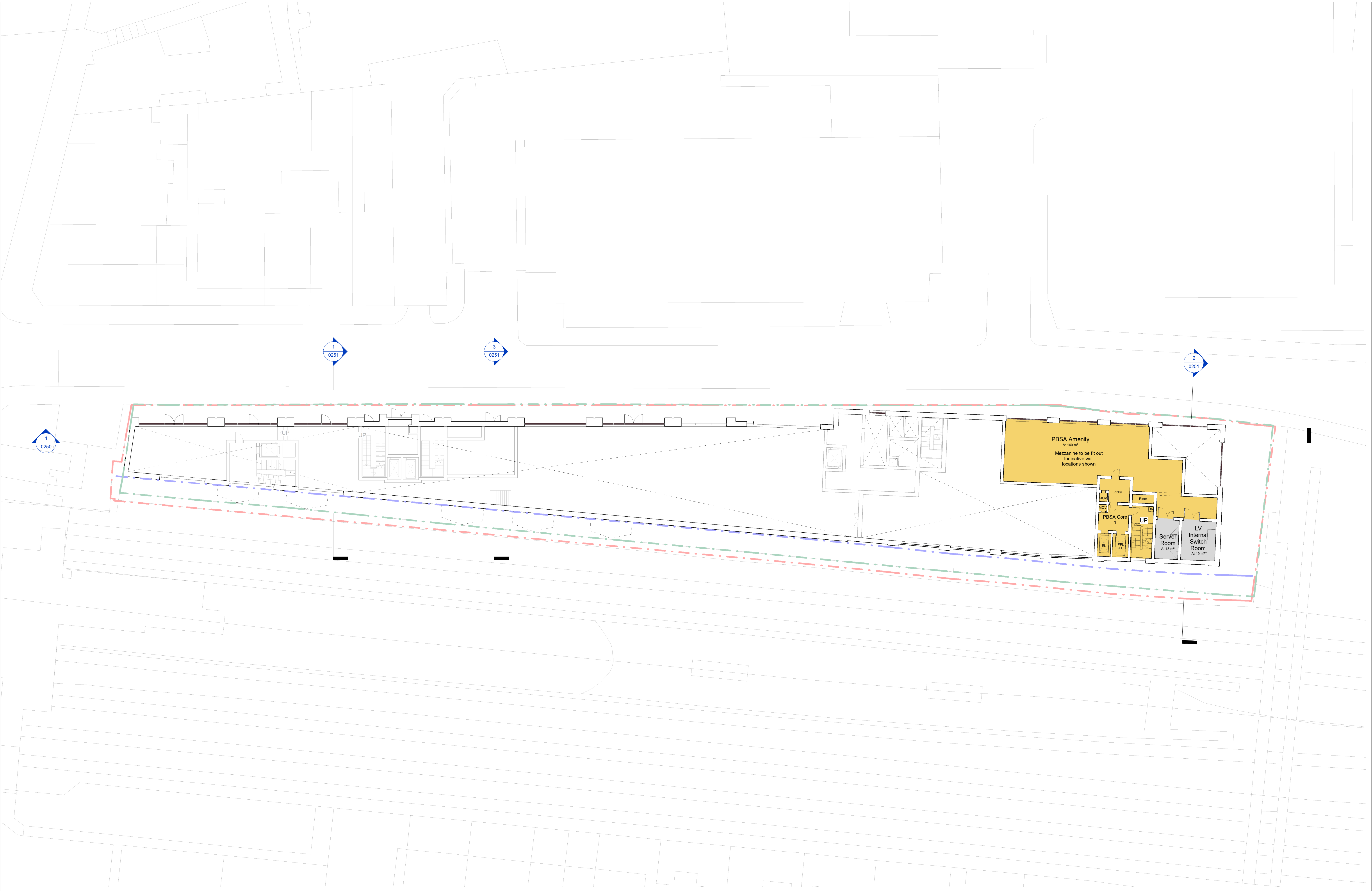
HTA Design LLP
www.hta.co.uk

London | Edinburgh | Manchester | Bristol

P12
revision

TCO
drawn

hta



revision	date	drawn	description
P04	29.10.24	TCO	Issue For Landscape Coordination
P05	07.11.24	TCO	Issue For Coordination
P06	19.11.24	TCO	Issue for Sustainability
P07	28.11.24	TCO	Issue For Coordination
P08	06.01.25	TCO	WIP Plan Set
P09	10.01.25	RBN	Issue For Coordination
P10	07.02.25	RBN	Issue for Coordination
P11	21.02.25	TCO	Issue for Coordination
P12	27.02.25	TCO	Design Freeze Issue

LEGEND

	PBSA Tenure		PBSA Entrance / Access		Site Boundary (Site Survey)
	C3 Tenure		C3 Entrance / Access		Site Boundary (Site Title)
	Commercial		Commercial Entrance / Access		3m Offset from Site Boundary (Site Survey)
	Shared Plant				

Notes: -
Do not scale from drawings unless by agreement with HTA. Use figured dimensions only. Check all dimensions on site prior to commencing the works. Drawing to be read in conjunction with other relevant consultant information.

This drawing is the copyright of HTA Design LLP and must not be copied or reproduced in part, or in whole, without the express permission of HTA Design LLP. Drawing to be read in conjunction with specification.

0m 4m 8m 12m 16m 20m

N

Mezzanine Level
GA Plan

Fifth State
14 Blackburn Road

FOR INFORMATION

FST-BRC-HTA-XX-M-SK-A-0201
number

1:200 @ A1
scale
HTA Design LLP
www.hta.co.uk
London | Edinburgh | Manchester | Bristol

FST-BRC
job reference

P12
revision
TCO
drawn
hta