

The quality and accuracy of any print will depend on your printer, your computer and its print settings. Measurements scaled from this plan may not match measurements between the same points on the ground.



This plan must be used with the attached 'Symbols' document.

Date Requested: 25/03/2025

Job Reference: 36742219

Site Location: 525546 184662

Requested by: Mr Bradley Inston

Your Scheme/Reference:

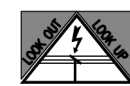
428955

Scale: 1:500 (When plotted at A4)

1. The position of the apparatus shown on this drawing is believed to be correct but the original landmarks may have been altered since the apparatus was installed.
2. The exact position of the apparatus should be verified - use approved cable avoidance tools prior to excavation using suitable hand tools.
3. It is essential that trial holes are carefully made avoiding the use of mechanical tools or picks until the exact location of all the cables have been determined.
4. It must be assumed that there is a service cable into each property, lamp column and street sign, etc.
5. All cables must be treated as being live unless proved otherwise by UK Power Networks.
6. The information provided must be given to all people working near UK Power Networks plant and equipment. Do not use plans more than 3 months after the issue date for excavation purposes.
7. Please be aware that electric cables/lines belonging to other owners of licensed electricity distribution systems may be present and it is your responsibility to identify their location.
8. Please be aware the Low Voltage Overhead power lines are not currently displayed for the Eastern Region via this service, if you require records on the location of these please contact our Plan Provision team directly via plans@ukpowernetworks.co.uk.

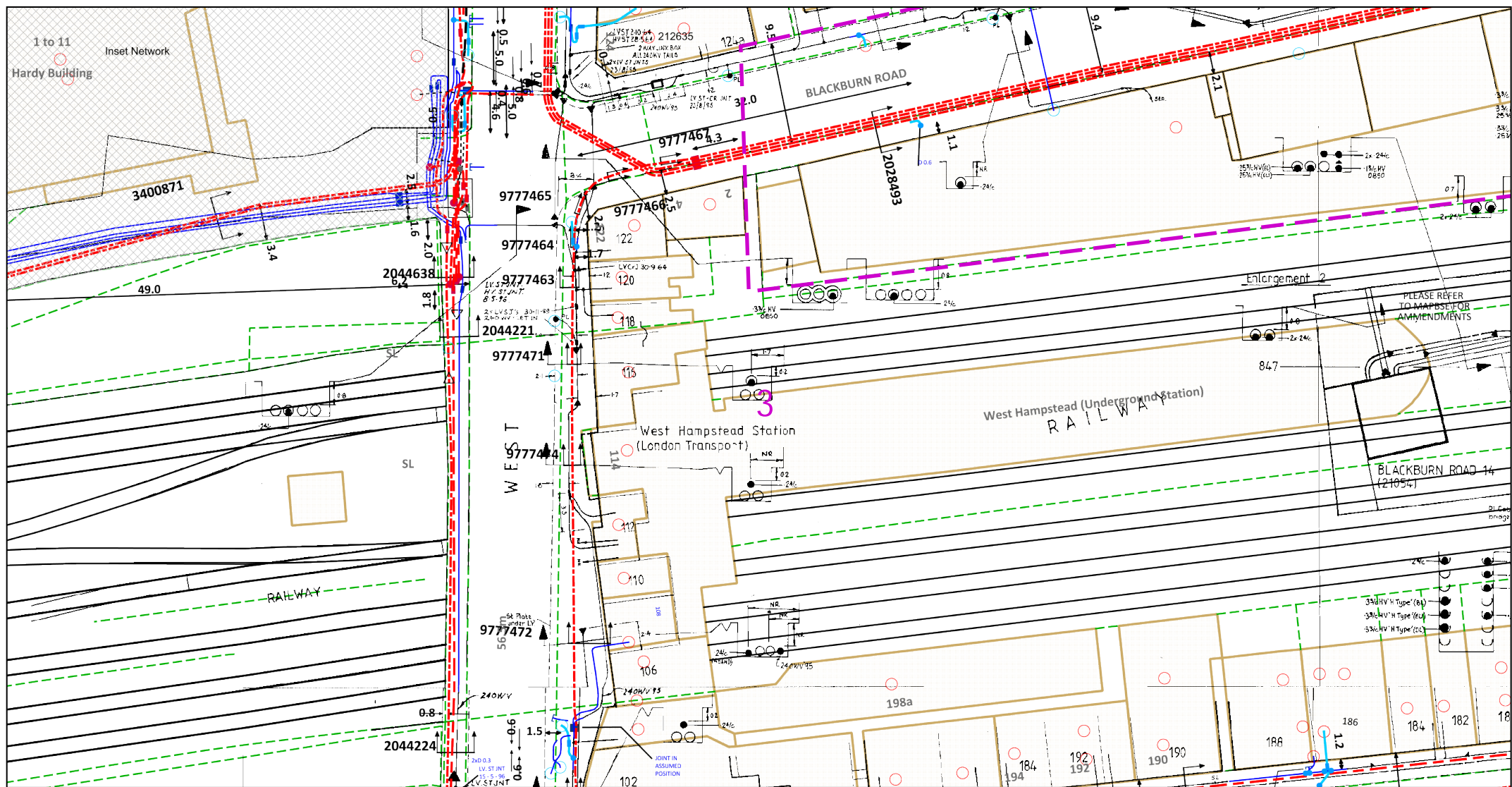
1. UK Power Networks does not warrant that the information provided to you is correct. You rely upon it at your own risk.
2. UK Power Networks does not exclude or limit its liability if it causes the death of any persons or causes personal injury to a person.
3. Subject to paragraph 2 UK Power Networks has no liability to you in contract, in tort (including negligence), for breach of statutory duty or otherwise for any loss, damage, cost, claims, demands, or expenses that you or any third party may suffer or incur as a result of using the information provided whether for physical damage to property or for any economic loss (including without limitation loss of profit, loss of opportunity, loss of savings, loss of goodwill, loss of business, loss of use) or any special or consequential loss or damage whatsoever.
4. This plan has been provided to you on the basis of the terms of use set out in the covering letter that accompanies this plan. If you do not accept and/or do not understand the terms of use set out in the covering letter you must not use the plan and must return it to the sender of the letter.
5. You are responsible for the security of the information provided to you. It must not be given, sold or made available upon payment of a fee to a third party.
6. Please Note: The Overview map does not display UK Power Networks electricity network and should not be used for the location of UK Power Networks assets. For detail of the electricity network please view the relevant page as highlighted in the Overview map.

IF IN DOUBT - ASK! PHONE  
0800 056 5866  
EMERGENCY - If you damage a  
cable or line  
Phone 0800 783 8838 (24hrs)  
URGENTLY



ALWAYS LOOK UP  
BEFORE  
YOU START WORK  
Refer to HSE Guidance  
note GS6

Maps produced at 1:2500 scale are Geo-Schematics which show LV mains cables and overhead lines (in some cases all voltages). Prior to carrying out excavations you must refer to the 1:500 records to determine the location of all known underground plant and equipment.



The quality and accuracy of any print will depend on your printer, your computer and its print settings. Measurements scaled from this plan may not match measurements between the same points on the ground.



IF IN DOUBT - ASK! PHONE  
0800 056 5866  
EMERGENCY - If you damage a  
cable or line  
Phone 0800 783 8838 (24hrs)  
URGENTLY



ALWAYS LOOK UP  
BEFORE  
YOU START WORK  
Refer to HSE Guidance  
note GS6

Maps produced at 1:2500 scale are Geo-Schematics which show LV mains cables and overhead lines (in some cases all voltages). Prior to carrying out excavations you must refer to the 1:500 records to determine the location of all known underground plant and equipment.

This plan must be used with the  
attached 'Symbols' document.

Date Requested: 25/03/2025

Job Reference: 36742219

Site Location: 525546 184662

Requested by: Mr Bradley Inston

Your Scheme/Reference:

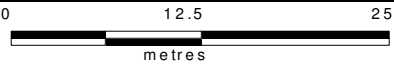
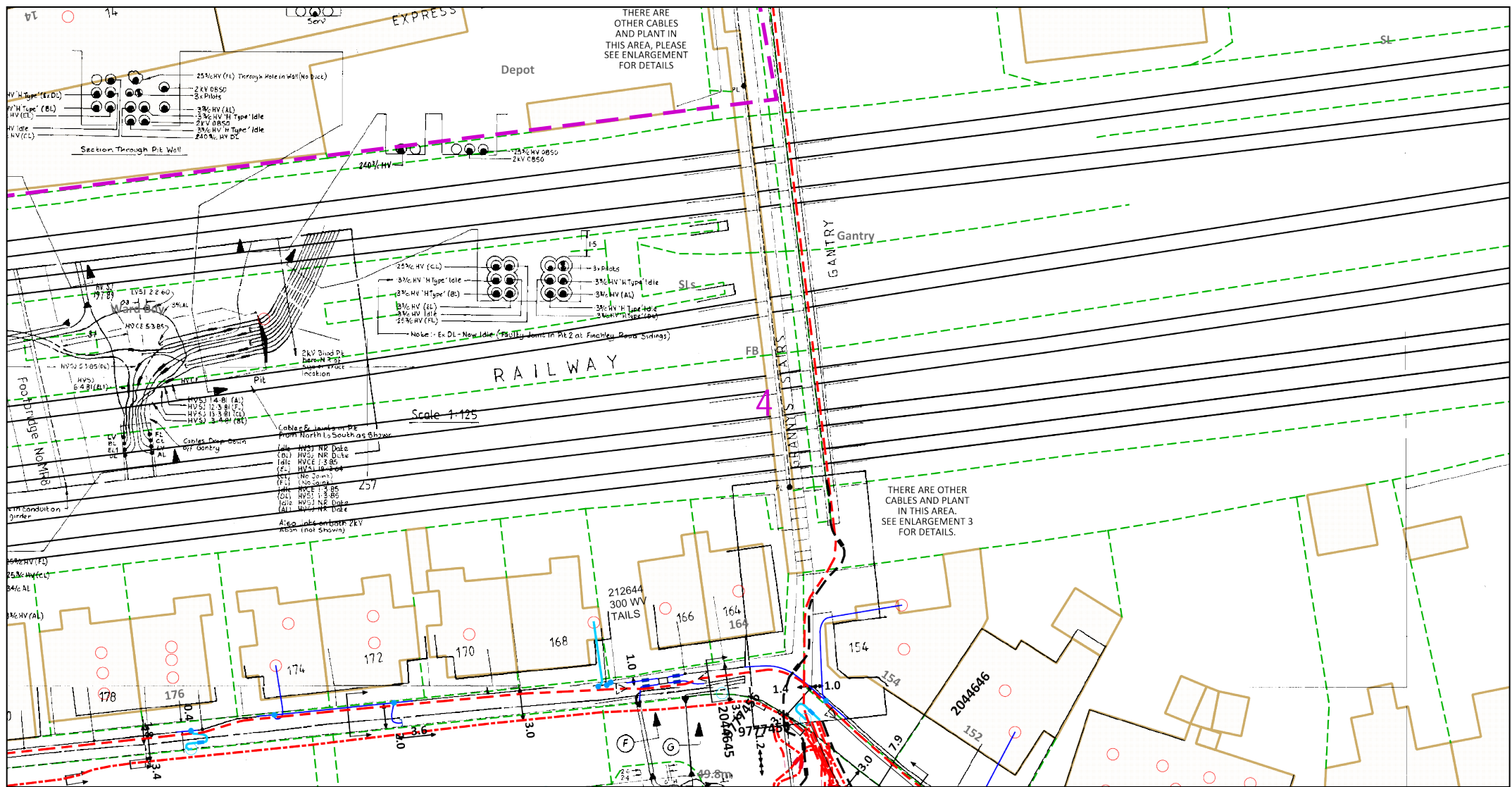
428955

Scale: 1:500 (When plotted at A4)

1. The position of the apparatus shown on this drawing is believed to be correct but the original landmarks may have been altered since the apparatus was installed.
2. The exact position of the apparatus should be verified - use approved cable avoidance tools prior to excavation using suitable hand tools.
3. It is essential that trial holes are carefully made avoiding the use of mechanical tools or picks until the exact location of all the cables have been determined.
4. It must be assumed that there is a service cable into each property, lamp column and street sign, etc.
5. All cables must be treated as being live unless proved otherwise by UK Power Networks.
6. The information proved must be given to all people working near UK Power Networks plant and equipment. Do not use plans more than 3 months after the issue date for excavation purposes.
7. Please be aware that electric cables/lines belonging to other owners of licensed electricity distribution systems may be present and it is your responsibility to identify their location.
8. Please be aware the Low Voltage Overhead power lines are not currently displayed for the Eastern Region via this service, if you require records on the location of these please contact our Plan Provision team directly via plans@ukpowernetworks.co.uk.

1. UK Power Networks does not warrant that the information provided to you is correct. You rely upon it at your own risk.
2. UK Power Networks does not exclude or limit its liability if it causes the death of any persons or causes personal injury to a person.
3. Subject to paragraph 2 UK Power Networks has no liability to you in contract, in tort (including negligence), for breach of statutory duty or otherwise for any loss, damage, cost, claims, demands, or expenses that you or any third party may suffer or incur as a result of using the information provided whether for physical damage to property or for any economic loss (including without limitation loss of profit, loss of opportunity, loss of savings, loss of goodwill, loss of business, loss of use) or any special or consequential loss or damage whatsoever.
4. This plan has been provided to you on the basis of the terms of use set out in the covering letter that accompanies this plan. If you do not accept and/or do not understand the terms of use set out in the covering letter you must not use the plan and must return it to the sender of the letter.
5. You are responsible for the security of the information provided to you. It must not be given, sold or made available upon payment of a fee to a third party.
6. Please Note: The Overview map does not display UK Power Networks electricity network and should not be used for the location of UK Power Networks assets. For detail of the electricity network please view the relevant page as highlighted in the Overview map.





Dig Sites Area:   Line:  

The quality and accuracy of any print will depend on your printer, your computer and its print settings. Measurements scaled from this plan may not match measurements between the same points on the ground.

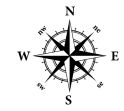
This plan must be used with the attached 'Symbols' document.

Date Requested: 25/03/2025  
Job Reference: 36742219  
Site Location: 525546 184662  
Requested by: Mr Bradley Inston

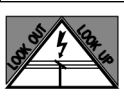
Your Scheme/Reference: 428955  
Scale: 1:500 (When plotted at A4)

1. The position of the apparatus shown on this drawing is believed to be correct but the original landmarks may have been altered since the apparatus was installed.
2. The exact position of the apparatus should be verified - use approved cable avoidance tools prior to excavation using suitable hand tools.
3. It is essential that trial holes are carefully made avoiding the use of mechanical tools or picks until the exact location of all the cables have been determined.
4. It must be assumed that there is a service cable into each property, lamp column and street sign, etc.
5. All cables must be treated as being live unless proved otherwise by UK Power Networks.
6. The information proved must be given to all people working near UK Power Networks plant and equipment. Do not use plans more than 3 months after the issue date for excavation purposes.
7. Please be aware that electric cables/lines belonging to other owners of licensed electricity distribution systems may be present and it is your responsibility to identify their location.
8. Please be aware the Low Voltage Overhead power lines are not currently displayed for the Eastern Region via this service, if you require records on the location of these please contact our Plan Provision team directly via [plans@ukpowernetworks.co.uk](mailto:plans@ukpowernetworks.co.uk).

1. UK Power Networks does not warrant that the information provided to you is correct. You rely upon it at your own risk.
2. UK Power Networks does not exclude or limit its liability if it causes the death of any persons or causes personal injury to a person.
3. Subject to paragraph 2 UK Power Networks has no liability to you in contract, in tort (including negligence), for breach of statutory duty or otherwise for any loss, damage, cost, claims, demands, or expenses that you or any third party may suffer or incur as a result of using the information provided whether for physical damage to property or for any economic loss (including without limitation loss of profit, loss of opportunity, loss of savings, loss of goodwill, loss of business, loss of use) or any special or consequential loss or damage whatsoever.
4. This plan has been provided to you on the basis of the terms of use set out in the covering letter that accompanies this plan. If you do not accept and/or do not understand the terms of use set out in the covering letter you must not use the plan and must return it to the sender of the letter.
5. You are responsible for the security of the information provided to you. It must not be given, sold or made available upon payment of a fee to a third party.
6. Please Note: The Overview map does not display UK Power Networks electricity network and should not be used for the location of UK Power Networks assets. For detail of the electricity network please view the relevant page as highlighted in the Overview map.



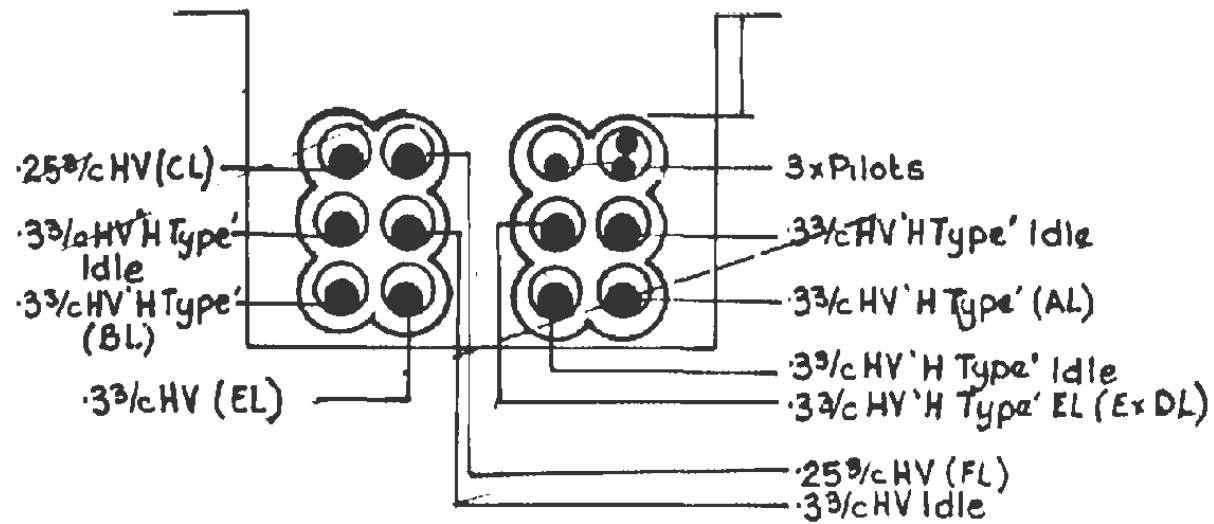
IF IN DOUBT - ASK! PHONE 0800 056 5866  
EMERGENCY - If you damage a cable or line Phone 0800 783 8838 (24hrs) URGENTLY





ALWAYS LOOK UP BEFORE YOU START WORK Refer to HSE Guidance note GS6

Maps produced at 1:2500 scale are Geo-Schematics which show LV mains cables and overhead lines (in some cases all voltages). Prior to carrying out excavations you must refer to the 1:500 records to determine the location of all known underground plant and equipment.

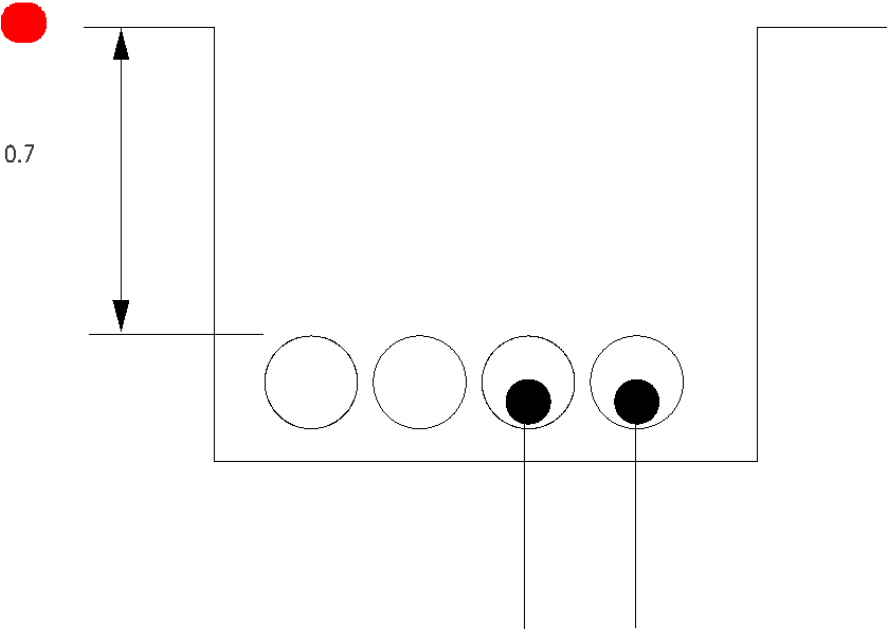
Cross Section : 1107466



Cross Section  
1107466



<p>1. The position of the apparatus shown on this drawing is believed to be correct but the original landmarks may have been altered since the apparatus was installed.</p> <p>2. The exact position of the apparatus should be verified - use approved cable avoidance tools prior to excavation using suitable hand tools.</p> <p>3. It is essential that trial holes are carefully made avoiding the use of mechanical tools or picks until the exact location of all the cables have been determined.</p> <p>4. It must be assumed that there is a service cable into each property, lamp column and street sign, etc.</p> <p>5. All cables must be treated as being live unless proved otherwise by UK Power Networks.</p> <p>6. The information proved must be given to all people working near UK Power Networks plant and equipment. Do not use plans more than 3 months after the issue date for excavation purposes.</p> <p>7. Please be aware that electric cables/lines belonging to other owners of licensed electricity distribution systems may be present and it is your responsibility to identify their location.</p>	<p>1. UK Power Networks does not warrant that the information provided to you is correct. You rely upon it at your own risk.</p> <p>2. UK Power Networks does not exclude or limit its liability if it causes the death of any persons or causes personal injury to a person.</p> <p>3. Subject to paragraph 2 UK Power Networks has no liability to you in contract, in tort (including negligence), for breach of statutory duty or otherwise for any loss, damage, cost, claims, demands, or expenses that you or any third party may suffer or incur as a result of using the information provided whether for physical damage to property or for any economic loss (including without limitation loss of profit, loss of opportunity, loss of savings, loss of goodwill, loss of business, loss of use) or any special or consequential loss or damage whatsoever.</p> <p>4. This plan has been provided to you on the basis of the terms of use set out in the covering letter that accompanies this plan. If you do not accept and/or do not understand the terms of use set out in the covering letter you must not use the plan and must return it to the sender of the letter.</p> <p>5. You are responsible for the security of the information provided to you. It must not be given, sold or made available upon payment of a fee to a third party.</p>	<p>IF IN DOUBT - ASK! PHONE 0800 056 5866 EMERGENCY - If you damage a cable or line Phone 0800 783 8838 (24hrs) URGENTLY</p> 	 <p>ALWAYS LOOK UP BEFORE YOU START WORK Refer to HSE Guidance note GS6</p> <p>Maps produced at 1:2500 scale are Geo-Schematics which show LV mains cables and overhead lines (in some cases all voltages). Prior to carrying out excavations you must refer to the 1:500 records to determine the location of all known underground plant and equipment.</p>
---	--	--	--

Cross Section : 1112807

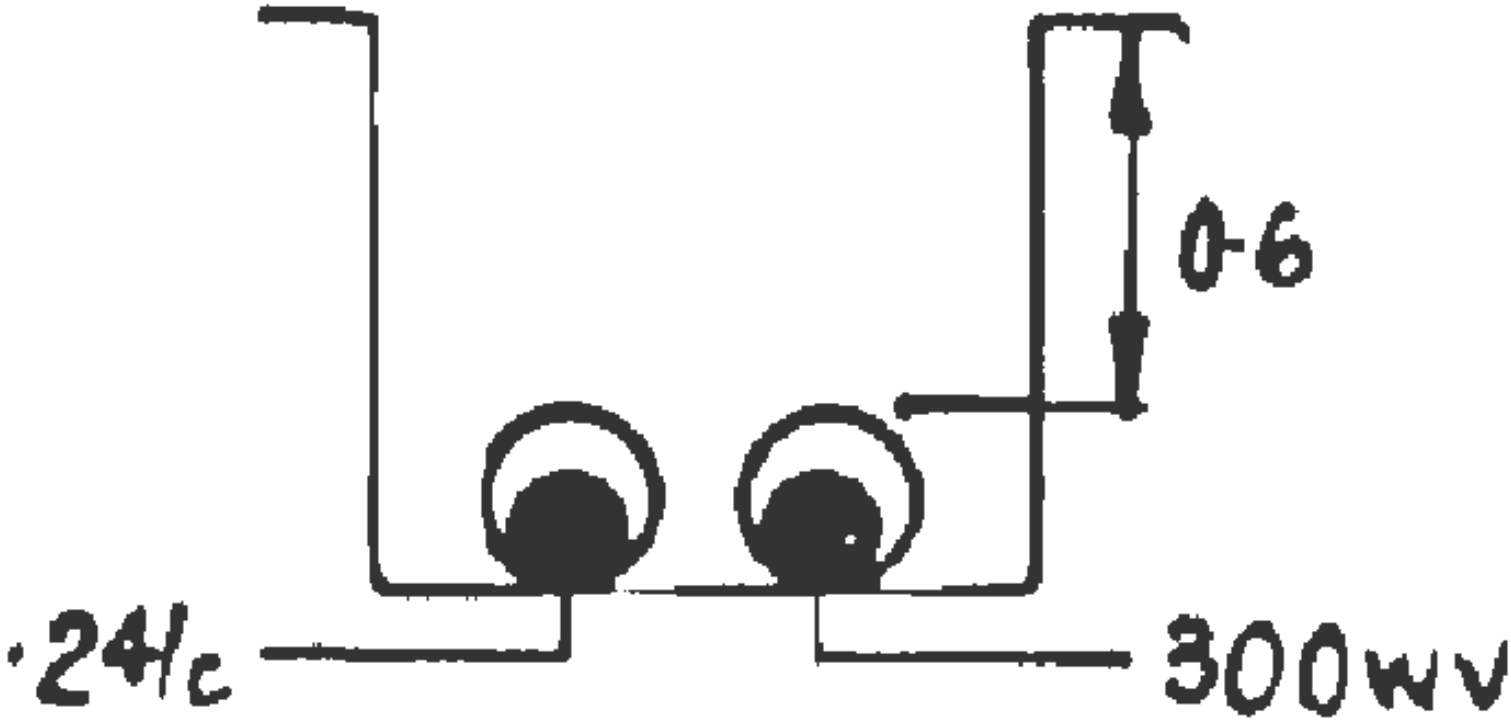


2x240 3cHV



Cross Section  
1112807

<p>1. The position of the apparatus shown on this drawing is believed to be correct but the original landmarks may have been altered since the apparatus was installed.</p> <p>2. The exact position of the apparatus should be verified - use approved cable avoidance tools prior to excavation using suitable hand tools.</p> <p>3. It is essential that trial holes are carefully made avoiding the use of mechanical tools or picks until the exact location of all the cables have been determined.</p> <p>4. It must be assumed that there is a service cable into each property, lamp column and street sign, etc.</p> <p>5. All cables must be treated as being live unless proved otherwise by UK Power Networks.</p> <p>6. The information proved must be given to all people working near UK Power Networks plant and equipment. Do not use plans more than 3 months after the issue date for excavation purposes.</p> <p>7. Please be aware that electric cables/lines belonging to other owners of licensed electricity distribution systems may be present and it is your responsibility to identify their location.</p>	<p>1. UK Power Networks does not warrant that the information provided to you is correct. You rely upon it at your own risk.</p> <p>2. UK Power Networks does not exclude or limit its liability if it causes the death of any persons or causes personal injury to a person.</p> <p>3. Subject to paragraph 2 UK Power Networks has no liability to you in contract, in tort (including negligence), for breach of statutory duty or otherwise for any loss, damage, cost, claims, demands, or expenses that you or any third party may suffer or incur as a result of using the information provided whether for physical damage to property or for any economic loss (including without limitation loss of profit, loss of opportunity, loss of savings, loss of goodwill, loss of business, loss of use) or any special or consequential loss or damage whatsoever.</p> <p>4. This plan has been provided to you on the basis of the terms of use set out in the covering letter that accompanies this plan. If you do not accept and/or do not understand the terms of use set out in the covering letter you must not use the plan and must return it to the sender of the letter.</p> <p>5. You are responsible for the security of the information provided to you. It must not be given, sold or made available upon payment of a fee to a third party.</p>	<p>IF IN DOUBT - ASK! PHONE 0800 056 5866 EMERGENCY - If you damage a cable or line Phone 0800 783 8838 (24hrs) URGENTLY</p>	
			<p>ALWAYS LOOK UP BEFORE YOU START WORK Refer to HSE Guidance note GS6</p>

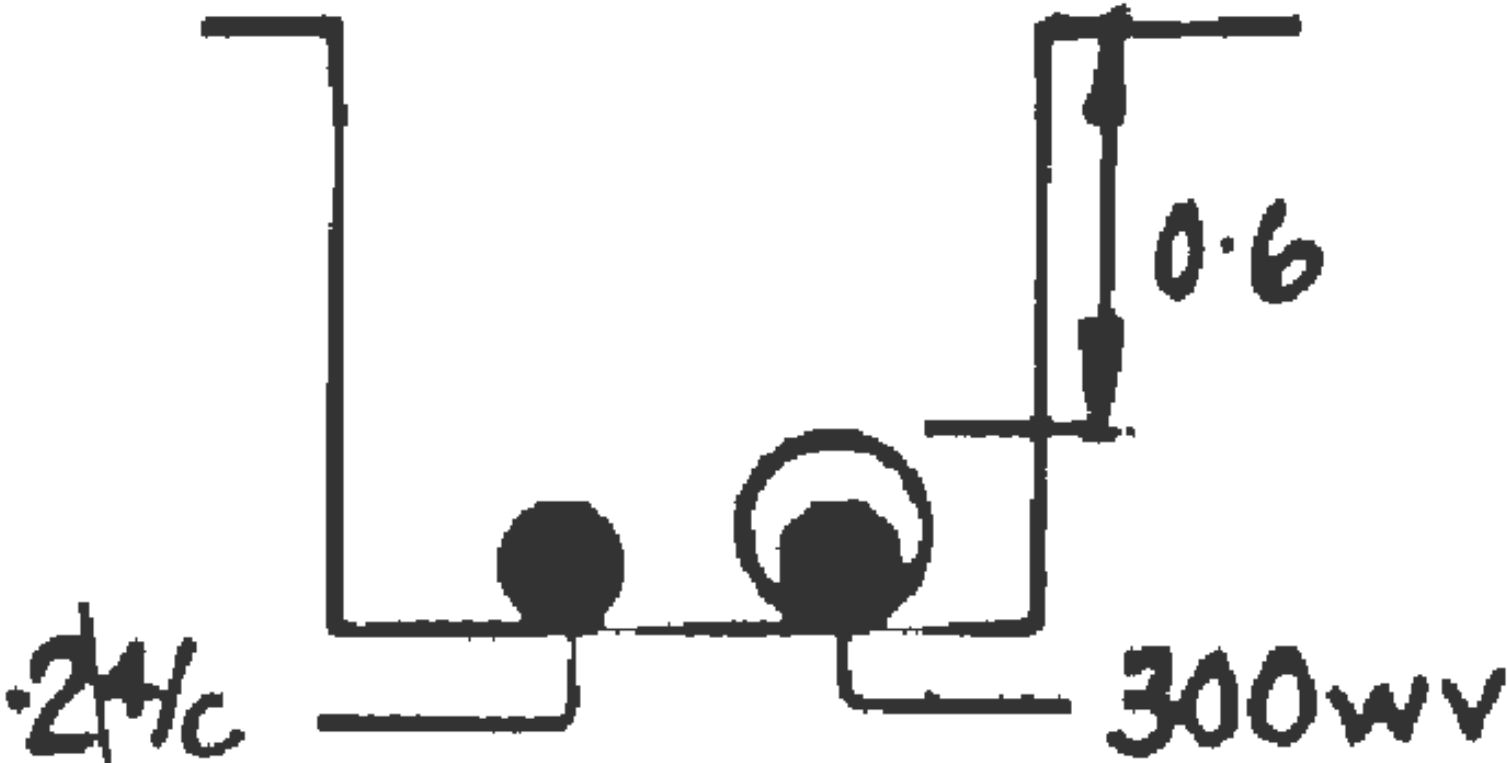
Cross Section : 1112791



Cross Section  
1112791

<p>1. The position of the apparatus shown on this drawing is believed to be correct but the original landmarks may have been altered since the apparatus was installed.</p> <p>2. The exact position of the apparatus should be verified - use approved cable avoidance tools prior to excavation using suitable hand tools.</p> <p>3. It is essential that trial holes are carefully made avoiding the use of mechanical tools or picks until the exact location of all the cables have been determined.</p> <p>4. It must be assumed that there is a service cable into each property, lamp column and street sign, etc.</p> <p>5. All cables must be treated as being live unless proved otherwise by UK Power Networks.</p> <p>6. The information proved must be given to all people working near UK Power Networks plant and equipment. Do not use plans more than 3 months after the issue date for excavation purposes.</p> <p>7. Please be aware that electric cables/lines belonging to other owners of licensed electricity distribution systems may be present and it is your responsibility to identify their location.</p>	<p>1. UK Power Networks does not warrant that the information provided to you is correct. You rely upon it at your own risk.</p> <p>2. UK Power Networks does not exclude or limit its liability if it causes the death of any persons or causes personal injury to a person.</p> <p>3. Subject to paragraph 2 UK Power Networks has no liability to you in contract, in tort (including negligence), for breach of statutory duty or otherwise for any loss, damage, cost, claims, demands, or expenses that you or any third party may suffer or incur as a result of using the information provided whether for physical damage to property or for any economic loss (including without limitation loss of profit, loss of opportunity, loss of savings, loss of goodwill, loss of business, loss of use) or any special or consequential loss or damage whatsoever.</p> <p>4. This plan has been provided to you on the basis of the terms of use set out in the covering letter that accompanies this plan. If you do not accept and/or do not understand the terms of use set out in the covering letter you must not use the plan and must return it to the sender of the letter.</p> <p>5. You are responsible for the security of the information provided to you. It must not be given, sold or made available upon payment of a fee to a third party.</p>	<p>IF IN DOUBT - ASK! PHONE 0800 056 5866 EMERGENCY - If you damage a cable or line Phone 0800 783 8838 (24hrs) URGENTLY</p>	<p><b>UK Power Networks</b></p> 
			<p>ALWAYS LOOK UP BEFORE YOU START WORK Refer to HSE Guidance note GS6</p>
<p>Maps produced at 1:2500 scale are Geo-Schematics which show LV mains cables and overhead lines (in some cases all voltages). Prior to carrying out excavations you must refer to the 1:500 records to determine the location of all known underground plant and equipment.</p>			

Cross Section : 1112792



Cross Section

1112792

1. The position of the apparatus shown on this drawing is believed to be correct but the original landmarks may have been altered since the apparatus was installed.  
2. The exact position of the apparatus should be verified - use approved cable avoidance tools prior to excavation using suitable hand tools.  
3. It is essential that trial holes are carefully made avoiding the use of mechanical tools or picks until the exact location of all the cables have been determined.  
4. It must be assumed that there is a service cable into each property, lamp column and street sign, etc.  
5. All cables must be treated as being live unless proved otherwise by UK Power Networks.  
6. The information proved must be given to all people working near UK Power Networks plant and equipment. Do not use plans more than 3 months after the issue date for excavation purposes.  
7. Please be aware that electric cables/lines belonging to other owners of licensed electricity distribution systems may be present and it is your responsibility to identify their location.

1. UK Power Networks does not warrant that the information provided to you is correct. You rely upon it at your own risk.  
2. UK Power Networks does not exclude or limit its liability if it causes the death of any persons or causes personal injury to a person.  
3. Subject to paragraph 2 UK Power Networks has no liability to you in contract, in tort (including negligence), for breach of statutory duty or otherwise for any loss, damage, cost, claims, demands, or expenses that you or any third party may suffer or incur as a result of using the information provided whether for physical damage to property or for any economic loss (including without limitation loss of profit, loss of opportunity, loss of savings, loss of goodwill, loss of business, loss of use) or any special or consequential loss or damage whatsoever.  
4. This plan has been provided to you on the basis of the terms of use set out in the covering letter that accompanies this plan. If you do not accept and/or do not understand the terms of use set out in the covering letter you must not use the plan and must return it to the sender of the letter.  
5. You are responsible for the security of the information provided to you. It must not be given, sold or made available upon payment of a fee to a third party.

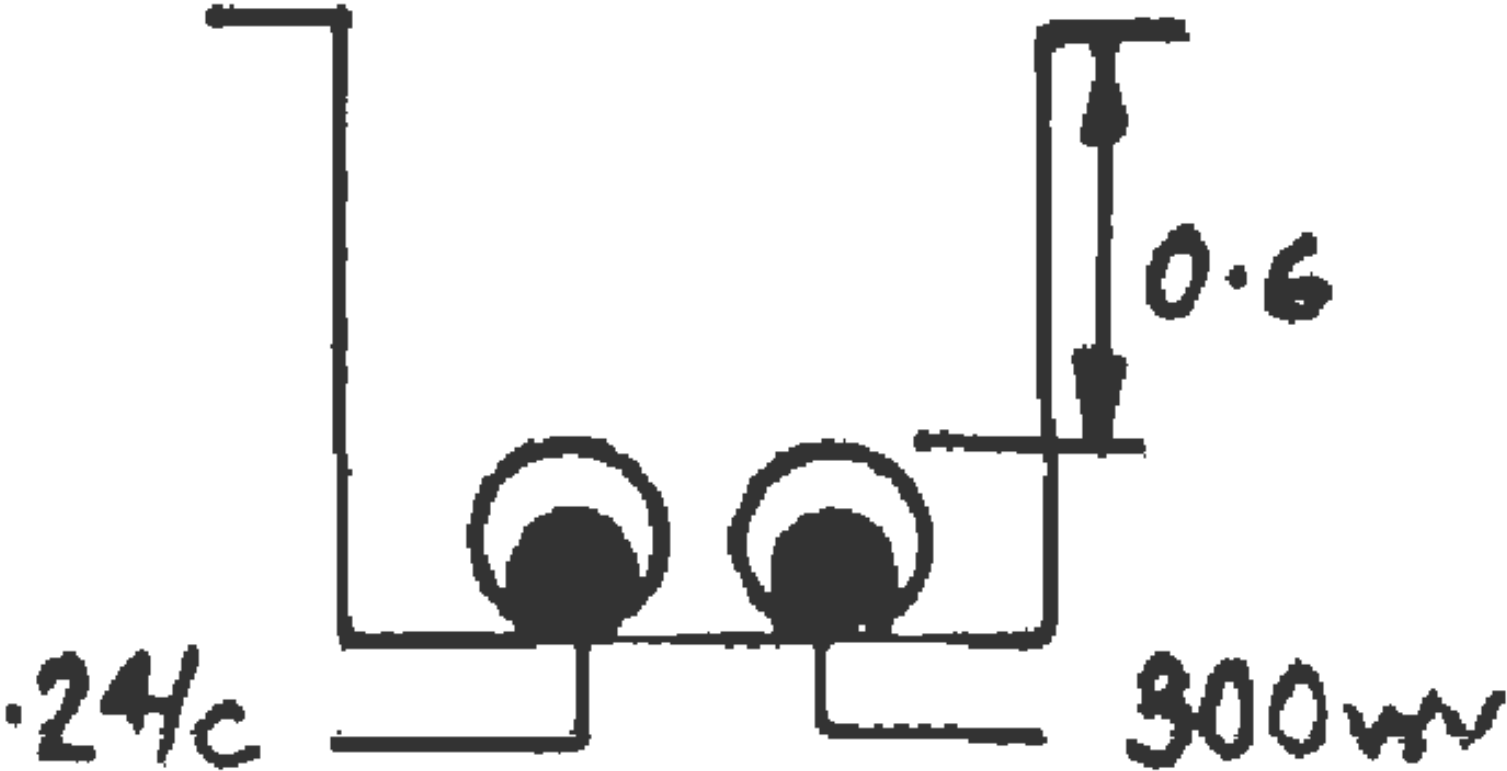
IF IN DOUBT - ASK! PHONE  
0800 056 5866  
EMERGENCY - If you damage  
a cable or line  
Phone 0800 783 8838 (24hrs)  
URGENTLY



ALWAYS LOOK UP BEFORE  
YOU START WORK  
Refer to HSE Guidance note GS6

Maps produced at 1:2500 scale are Geo-Schematics which show LV mains cables and overhead lines (in some cases all voltages). Prior to carrying out excavations you must refer to the 1:500 records to determine the location of all known underground plant and equipment.

Cross Section : 1112793



Cross Section

1112793

1. The position of the apparatus shown on this drawing is believed to be correct but the original landmarks may have been altered since the apparatus was installed.  
2. The exact position of the apparatus should be verified - use approved cable avoidance tools prior to excavation using suitable hand tools.  
3. If it is essential that trial holes are carefully made avoiding the use of mechanical tools or picks until the exact location of all the cables have been determined.  
4. It must be assumed that there is a service cable into each property, lamp column and street sign, etc.  
5. All cables must be treated as being live unless proved otherwise by UK Power Networks.  
6. The information proved must be given to all people working near UK Power Networks plant and equipment. Do not use plans more than 3 months after the issue date for excavation purposes.  
7. Please be aware that electric cables/lines belonging to other owners of licensed electricity distribution systems may be present and it is your responsibility to identify their location.

1. UK Power Networks does not warrant that the information provided to you is correct. You rely upon it at your own risk.  
2. UK Power Networks does not exclude or limit its liability if it causes the death of any persons or causes personal injury to a person.  
3. Subject to paragraph 2 UK Power Networks has no liability to you in contract, in tort (including negligence), for breach of statutory duty or otherwise for any loss, damage, cost, claims, demands, or expenses that you or any third party may suffer or incur as a result of using the information provided whether for physical damage to property or for any economic loss (including without limitation loss of profit, loss of opportunity, loss of savings, loss of goodwill, loss of business, loss of use) or any special or consequential loss or damage whatsoever.  
4. This plan has been provided to you on the basis of the terms of use set out in the covering letter that accompanies this plan. If you do not accept and/or do not understand the terms of use set out in the covering letter you must not use the plan and must return it to the sender of the letter.  
5. You are responsible for the security of the information provided to you. It must not be given, sold or made available upon payment of a fee to a third party.

IF IN DOUBT - ASK! PHONE  
0800 056 5866  
EMERGENCY - If you damage  
a cable or line  
Phone 0800 783 8838 (24hrs)  
URGENTLY



ALWAYS LOOK UP BEFORE  
YOU START WORK  
Refer to HSE Guidance note GS6

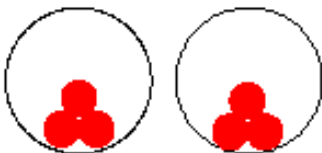
Maps produced at 1:2500 scale are Geo-Schematics which show LV mains cables and overhead lines (in some cases all voltages). Prior to carrying out excavations you must refer to the 1:500 records to determine the location of all known underground plant and equipment.



Cross Section : 2740002

0.75

T/T



2 x 300.0x.11kV

Cross Section

1. UK Power Networks does not warrant that the information provided to you is correct. You rely upon it at your own risk.  
2. UK Power Networks does not exclude or limit its liability if it causes the death of any persons or causes personal injury to a person.  
3. Subject to paragraph 2 UK Power Networks has no liability to you in contract, in tort (including negligence), for breach of statutory duty or otherwise for any loss, damage, cost, claims, demands, or expenses that you or any third party may suffer or incur as a result of using the information provided whether for physical damage to property or for any economic loss (including without limitation loss of profit, loss of opportunity, loss of savings, loss of goodwill, loss of business, loss of use) or any special or consequential loss or damage whatsoever.  
4. This plan has been provided to you on the basis of the terms of use set out in the covering letter that accompanies this plan. If you do not accept and/or do not understand the terms of use set out in the covering letter you must not use the plan and must return it to the sender of the letter.  
5. You are responsible for the security of the information provided to you. It must not be given, sold or made available upon payment of a fee to a third party.

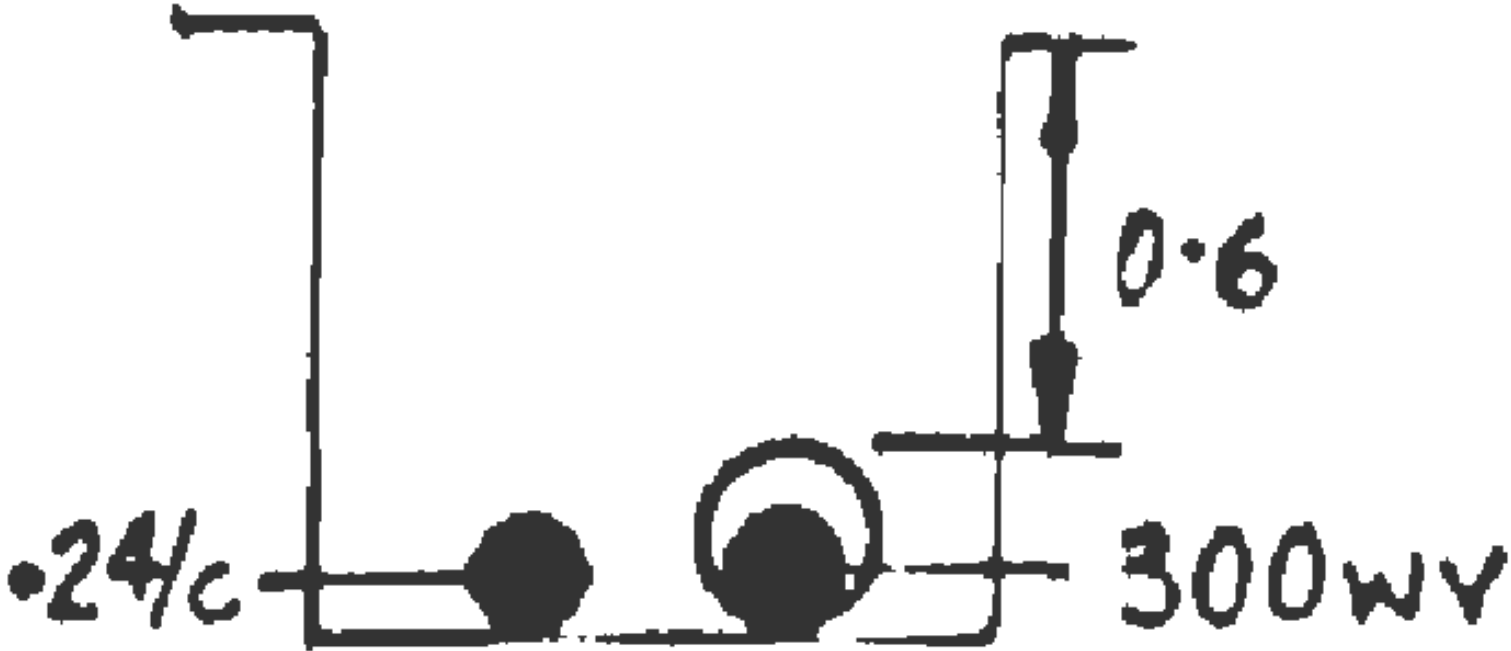
IF IN DOUBT - ASK! PHONE  
0800 056 5866  
EMERGENCY - If you damage  
a cable or line  
Phone 0800 783 8838 (24hrs)  
URGENTLY




ALWAYS LOOK UP BEFORE  
YOU START WORK  
Refer to HSE Guidance note GS6

Maps produced at 1:2500 scale are Geo-Schematics which show LV mains cables and overhead lines (in some cases all voltages). Prior to carrying out excavations you must refer to the 1:500 records to determine the location of all known underground plant and equipment.

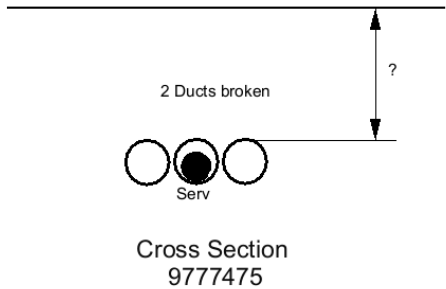
Cross Section : 1112789



Cross Section  
1112789

<p>1. The position of the apparatus shown on this drawing is believed to be correct but the original landmarks may have been altered since the apparatus was installed.</p> <p>2. The exact position of the apparatus should be verified - use approved cable avoidance tools prior to excavation using suitable hand tools.</p> <p>3. It is essential that trial holes are carefully made avoiding the use of mechanical tools or picks until the exact location of all the cables have been determined.</p> <p>4. It must be assumed that there is a service cable into each property, lamp column and street sign, etc.</p> <p>5. All cables must be treated as being live unless proved otherwise by UK Power Networks.</p> <p>6. The information proved must be given to all people working near UK Power Networks plant and equipment. Do not use plans more than 3 months after the issue date for excavation purposes.</p> <p>7. Please be aware that electric cables/lines belonging to other owners of licensed electricity distribution systems may be present and it is your responsibility to identify their location.</p>	<p>1. UK Power Networks does not warrant that the information provided to you is correct. You rely upon it at your own risk.</p> <p>2. UK Power Networks does not exclude or limit its liability if it causes the death of any persons or causes personal injury to a person.</p> <p>3. Subject to paragraph 2 UK Power Networks has no liability to you in contract, in tort (including negligence), for breach of statutory duty or otherwise for any loss, damage, cost, claims, demands, or expenses that you or any third party may suffer or incur as a result of using the information provided whether for physical damage to property or for any economic loss (including without limitation loss of profit, loss of opportunity, loss of savings, loss of goodwill, loss of business, loss of use) or any special or consequential loss or damage whatsoever.</p> <p>4. This plan has been provided to you on the basis of the terms of use set out in the covering letter that accompanies this plan. If you do not accept and/or do not understand the terms of use set out in the covering letter you must not use the plan and must return it to the sender of the letter.</p> <p>5. You are responsible for the security of the information provided to you. It must not be given, sold or made available upon payment of a fee to a third party.</p>	<p>IF IN DOUBT - ASK! PHONE 0800 056 5866 EMERGENCY - If you damage a cable or line Phone 0800 783 8838 (24hrs) URGENTLY</p>	<p><b>UK Power Networks</b></p>
			<p>ALWAYS LOOK UP BEFORE YOU START WORK Refer to HSE Guidance note GS6</p>

Cross Section : 9777475



1. The position of the apparatus shown on this drawing is believed to be correct but the original landmarks may have been altered since the apparatus was installed.  
2. The exact position of the apparatus should be verified - use approved cable avoidance tools prior to excavation using suitable hand tools.  
3. It is essential that trial holes are carefully made avoiding the use of mechanical tools or picks until the exact location of all the cables have been determined.  
4. It must be assumed that there is a service cable into each property, lamp column and street sign, etc.  
5. All cables must be treated as being live unless proved otherwise by UK Power Networks.  
6. The information proved must be given to all people working near UK Power Networks plant and equipment. Do not use plans more than 3 months after the issue date for excavation purposes.  
7. Please be aware that electric cables/lines belonging to other owners of licensed electricity distribution systems may be present and it is your responsibility to identify their location.

1. UK Power Networks does not warrant that the information provided to you is correct. You rely upon it at your own risk.  
2. UK Power Networks does not exclude or limit its liability if it causes the death of any persons or causes personal injury to a person.  
3. Subject to paragraph 2 UK Power Networks has no liability to you in contract, in tort (including negligence), for breach of statutory duty or otherwise for any loss, damage, cost, claims, demands, or expenses that you or any third party may suffer or incur as a result of using the information provided whether for physical damage to property or for any economic loss (including without limitation loss of profit, loss of opportunity, loss of savings, loss of goodwill, loss of business, loss of use) or any special or consequential loss or damage whatsoever.  
4. This plan has been provided to you on the basis of the terms of use set out in the covering letter that accompanies this plan. If you do not accept and/or do not understand the terms of use set out in the covering letter you must not use the plan and must return it to the sender of the letter.  
5. You are responsible for the security of the information provided to you. It must not be given, sold or made available upon payment of a fee to a third party.

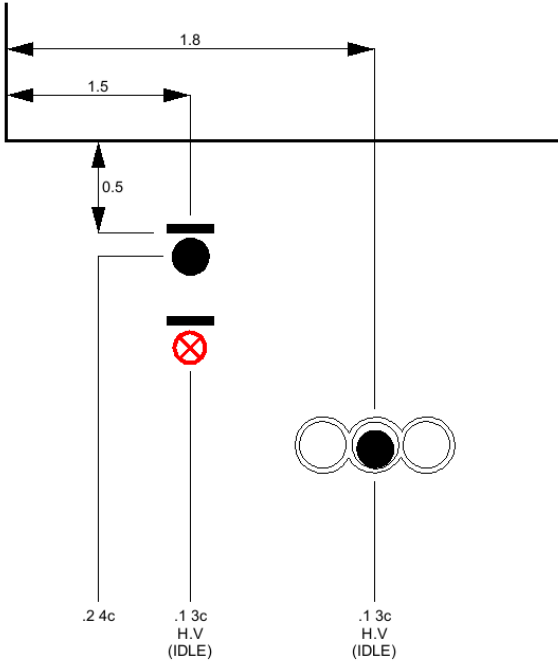
IF IN DOUBT - ASK! PHONE  
0800 056 5866  
EMERGENCY - If you damage  
a cable or line  
Phone 0800 783 8838 (24hrs)  
URGENTLY



ALWAYS LOOK UP BEFORE  
YOU START WORK  
Refer to HSE Guidance note GS6

Maps produced at 1:2500 scale are Geo-Schematics which show LV mains cables and overhead lines (in some cases all voltages). Prior to carrying out excavations you must refer to the 1:500 records to determine the location of all known underground plant and equipment.

Cross Section : 2044643



ASSUMED SECTION

Cross Section  
2044643

1. The position of the apparatus shown on this drawing is believed to be correct but the original landmarks may have been altered since the apparatus was installed.  
2. The exact position of the apparatus should be verified - use approved cable avoidance tools prior to excavation using suitable hand tools.  
3. It is essential that trial holes are carefully made avoiding the use of mechanical tools or picks until the exact location of all the cables have been determined.  
4. It must be assumed that there is a service cable into each property, lamp column and street sign, etc.  
5. All cables must be treated as being live unless proved otherwise by UK Power Networks.  
6. The information proved must be given to all people working near UK Power Networks plant and equipment. Do not use plans more than 3 months after the issue date for excavation purposes.  
7. Please be aware that electric cables/lines belonging to other owners of licensed electricity distribution systems may be present and it is your responsibility to identify their location.

1. UK Power Networks does not warrant that the information provided to you is correct. You rely upon it at your own risk.  
2. UK Power Networks does not exclude or limit its liability if it causes the death of any persons or causes personal injury to a person.  
3. Subject to paragraph 2 UK Power Networks has no liability to you in contract, in tort (including negligence), for breach of statutory duty or otherwise for any loss, damage, cost, claims, demands, or expenses that you or any third party may suffer or incur as a result of using the information provided whether for physical damage to property or for any economic loss (including without limitation loss of profit, loss of opportunity, loss of savings, loss of goodwill, loss of business, loss of use) or any special or consequential loss or damage whatsoever.  
4. This plan has been provided to you on the basis of the terms of use set out in the covering letter that accompanies this plan. If you do not accept and/or do not understand the terms of use set out in the covering letter you must not use the plan and must return it to the sender of the letter.  
5. You are responsible for the security of the information provided to you. It must not be given, sold or made available upon payment of a fee to a third party.

IF IN DOUBT - ASK! PHONE  
0800 056 5866  
EMERGENCY - If you damage  
a cable or line  
Phone 0800 783 8838 (24hrs)  
URGENTLY

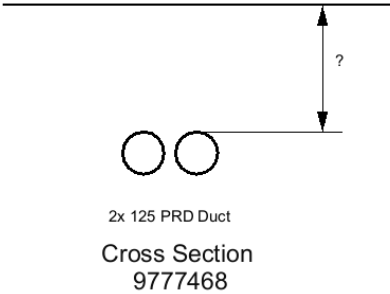


ALWAYS LOOK UP BEFORE  
YOU START WORK  
Refer to HSE Guidance note GS6

Maps produced at 1:2500 scale are Geo-Schematics which show LV mains cables and overhead lines (in some cases all voltages). Prior to carrying out excavations you must refer to the 1:500 records to determine the location of all known underground plant and equipment.

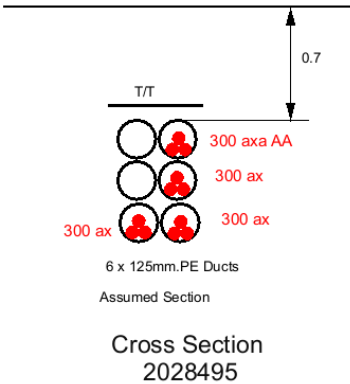


Cross Section : 9777468



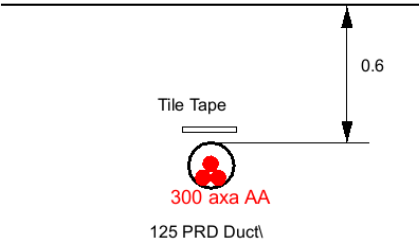
<p>1. The position of the apparatus shown on this drawing is believed to be correct but the original landmarks may have been altered since the apparatus was installed.</p> <p>2. The exact position of the apparatus should be verified - use approved cable avoidance tools prior to excavation using suitable hand tools.</p> <p>3. It is essential that trial holes are carefully made avoiding the use of mechanical tools or picks until the exact location of all the cables have been determined.</p> <p>4. It must be assumed that there is a service cable into each property, lamp column and street sign, etc.</p> <p>5. All cables must be treated as being live unless proved otherwise by UK Power Networks.</p> <p>6. The information proved must be given to all people working near UK Power Networks plant and equipment. Do not use plans more than 3 months after the issue date for excavation purposes.</p> <p>7. Please be aware that electric cables/lines belonging to other owners of licensed electricity distribution systems may be present and it is your responsibility to identify their location.</p>	<p>1. UK Power Networks does not warrant that the information provided to you is correct. You rely upon it at your own risk.</p> <p>2. UK Power Networks does not exclude or limit its liability if it causes the death of any persons or causes personal injury to a person.</p> <p>3. Subject to paragraph 2 UK Power Networks has no liability to you in contract, in tort (including negligence), for breach of statutory duty or otherwise for any loss, damage, cost, claims, demands, or expenses that you or any third party may suffer or incur as a result of using the information provided whether for physical damage to property or for any economic loss (including without limitation loss of profit, loss of opportunity, loss of savings, loss of goodwill, loss of business, loss of use) or any special or consequential loss or damage whatsoever.</p> <p>4. This plan has been provided to you on the basis of the terms of use set out in the covering letter that accompanies this plan. If you do not accept and/or do not understand the terms of use set out in the covering letter you must not use the plan and must return it to the sender of the letter.</p> <p>5. You are responsible for the security of the information provided to you. It must not be given, sold or made available upon payment of a fee to a third party.</p>	<p>IF IN DOUBT - ASK! PHONE 0800 056 5866 EMERGENCY - If you damage a cable or line Phone 0800 783 8838 (24h rs) URGENTLY</p>	<div data-bbox="1912 1193 2231 1305"></div> <div data-bbox="1955 1332 2163 1377"><p>ALWAYS LOOK UP BEFORE YOU START WORK Refer to HSE Guidance note GS6</p></div> <div data-bbox="1704 1337 1827 1417"></div> <div data-bbox="1668 1449 2213 1500"><p>Maps produced at 1:2500 scale are Geo-Schematics which show LV mains cables and overhead lines (in some cases all voltages). Prior to carrying out excavations you must refer to the 1:500 records to determine the location of all known underground plant and equipment.</p></div>
---	--	---	--

Cross Section : 2028495



<p>1. The position of the apparatus shown on this drawing is believed to be correct but the original landmarks may have been altered since the apparatus was installed.</p> <p>2. The exact position of the apparatus should be verified - use approved cable avoidance tools prior to excavation using suitable hand tools.</p> <p>3. It is essential that trial holes are carefully made avoiding the use of mechanical tools or picks until the exact location of all the cables have been determined.</p> <p>4. It must be assumed that there is a service cable into each property, lamp column and street sign, etc.</p> <p>5. All cables must be treated as being live unless proved otherwise by UK Power Networks.</p> <p>6. The information proved must be given to all people working near UK Power Networks plant and equipment. Do not use plans more than 3 months after the issue date for excavation purposes.</p> <p>7. Please be aware that electric cables/lines belonging to other owners of licensed electricity distribution systems may be present and it is your responsibility to identify their location.</p>	<p>1. UK Power Networks does not warrant that the information provided to you is correct. You rely upon it at your own risk.</p> <p>2. UK Power Networks does not exclude or limit its liability if it causes the death of any persons or causes personal injury to a person.</p> <p>3. Subject to paragraph 2 UK Power Networks has no liability to you in contract, in tort (including negligence), for breach of statutory duty or otherwise for any loss, damage, cost, claims, demands, or expenses that you or any third party may suffer or incur as a result of using the information provided whether for physical damage to property or for any economic loss (including without limitation loss of profit, loss of opportunity, loss of savings, loss of goodwill, loss of business, loss of use) or any special or consequential loss or damage whatsoever.</p> <p>4. This plan has been provided to you on the basis of the terms of use set out in the covering letter that accompanies this plan. If you do not accept and/or do not understand the terms of use set out in the covering letter you must not use the plan and must return it to the sender of the letter.</p> <p>5. You are responsible for the security of the information provided to you. It must not be given, sold or made available upon payment of a fee to a third party.</p>	<p>IF IN DOUBT - ASK! PHONE 0800 056 5866 EMERGENCY - If you damage a cable or line Phone 0800 783 8838 (24hrs) URGENTLY</p>	<div data-bbox="1912 1193 2231 1305"></div> <div data-bbox="1953 1334 2163 1378"><p>ALWAYS LOOK UP BEFORE YOU START WORK Refer to HSE Guidance note GS6</p></div> <div data-bbox="1704 1337 1827 1417"></div> <div data-bbox="1668 1445 2213 1500"><p>Maps produced at 1:2500 scale are Geo-Schematics which show LV mains cables and overhead lines (in some cases all voltages). Prior to carrying out excavations you must refer to the 1:500 records to determine the location of all known underground plant and equipment.</p></div>
---	--	--	--

Cross Section : 9777470



Cross Section  
9777470

1. The position of the apparatus shown on this drawing is believed to be correct but the original landmarks may have been altered since the apparatus was installed.  
2. The exact position of the apparatus should be verified - use approved cable avoidance tools prior to excavation using suitable hand tools.  
3. It is essential that trial holes are carefully made avoiding the use of mechanical tools or picks until the exact location of all the cables have been determined.  
4. It must be assumed that there is a service cable into each property, lamp column and street sign, etc.  
5. All cables must be treated as being live unless proved otherwise by UK Power Networks.  
6. The information proved must be given to all people working near UK Power Networks plant and equipment. Do not use plans more than 3 months after the issue date for excavation purposes.  
7. Please be aware that electric cables/lines belonging to other owners of licensed electricity distribution systems may be present and it is your responsibility to identify their location.

1. UK Power Networks does not warrant that the information provided to you is correct. You rely upon it at your own risk.  
2. UK Power Networks does not exclude or limit its liability if it causes the death of any persons or causes personal injury to a person.  
3. Subject to paragraph 2 UK Power Networks has no liability to you in contract, in tort (including negligence), for breach of statutory duty or otherwise for any loss, damage, cost, claims, demands, or expenses that you or any third party may suffer or incur as a result of using the information provided whether for physical damage to property or for any economic loss (including without limitation loss of profit, loss of opportunity, loss of savings, loss of goodwill, loss of business, loss of use) or any special or consequential loss or damage whatsoever.  
4. This plan has been provided to you on the basis of the terms of use set out in the covering letter that accompanies this plan. If you do not accept and/or do not understand the terms of use set out in the covering letter you must not use the plan and must return it to the sender of the letter.  
5. You are responsible for the security of the information provided to you. It must not be given, sold or made available upon payment of a fee to a third party.

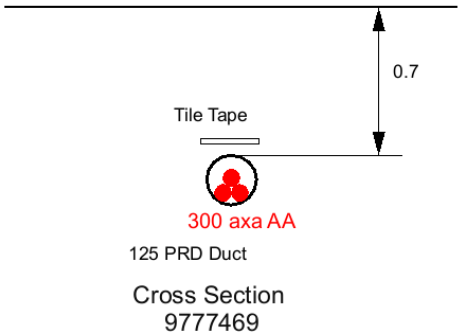
IF IN DOUBT - ASK! PHONE  
0800 056 5866  
EMERGENCY - If you damage  
a cable or line  
Phone 0800 783 8838 (24hrs)  
URGENTLY



ALWAYS LOOK UP BEFORE  
YOU START WORK  
Refer to HSE Guidance note GS6

Maps produced at 1:2500 scale are Geo-Schematics which show LV mains cables and overhead lines (in some cases all voltages). Prior to carrying out excavations you must refer to the 1:500 records to determine the location of all known underground plant and equipment.

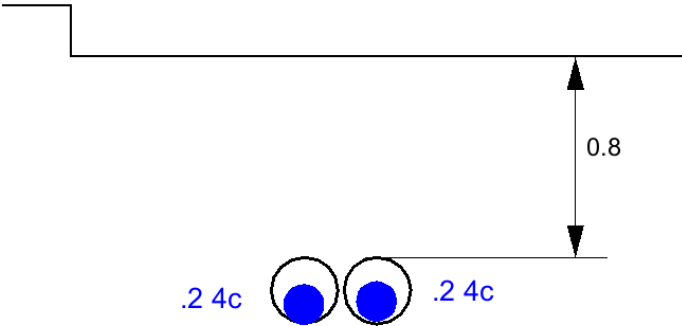
Cross Section : 9777469





<p>1. The position of the apparatus shown on this drawing is believed to be correct but the original landmarks may have been altered since the apparatus was installed.</p> <p>2. The exact position of the apparatus should be verified - use approved cable avoidance tools prior to excavation using suitable hand tools.</p> <p>3. It is essential that trial holes are carefully made avoiding the use of mechanical tools or picks until the exact location of all the cables have been determined.</p> <p>4. It must be assumed that there is a service cable into each property, lamp column and street sign, etc.</p> <p>5. All cables must be treated as being live unless proved otherwise by UK Power Networks.</p> <p>6. The information proved must be given to all people working near UK Power Networks plant and equipment. Do not use plans more than 3 months after the issue date for excavation purposes.</p> <p>7. Please be aware that electric cables/lines belonging to other owners of licensed electricity distribution systems may be present and it is your responsibility to identify their location.</p>	<p>1. UK Power Networks does not warrant that the information provided to you is correct. You rely upon it at your own risk.</p> <p>2. UK Power Networks does not exclude or limit its liability if it causes the death of any persons or causes personal injury to a person.</p> <p>3. Subject to paragraph 2 UK Power Networks has no liability to you in contract, in tort (including negligence), for breach of statutory duty or otherwise for any loss, damage, cost, claims, demands, or expenses that you or any third party may suffer or incur as a result of using the information provided whether for physical damage to property or for any economic loss (including without limitation loss of profit, loss of opportunity, loss of savings, loss of goodwill, loss of business, loss of use) or any special or consequential loss or damage whatsoever.</p> <p>4. This plan has been provided to you on the basis of the terms of use set out in the covering letter that accompanies this plan. If you do not accept and/or do not understand the terms of use set out in the covering letter you must not use the plan and must return it to the sender of the letter.</p> <p>5. You are responsible for the security of the information provided to you. It must not be given, sold or made available upon payment of a fee to a third party.</p>	<p>IF IN DOUBT - ASK! PHONE 0800 056 5866 EMERGENCY - If you damage a cable or line Phone 0800 783 8838 (24h rs) URGENTLY</p>	<p><b>UK Power Networks</b></p>
			<p>ALWAYS LOOK UP BEFORE YOU START WORK Refer to HSE Guidance note GS6</p>



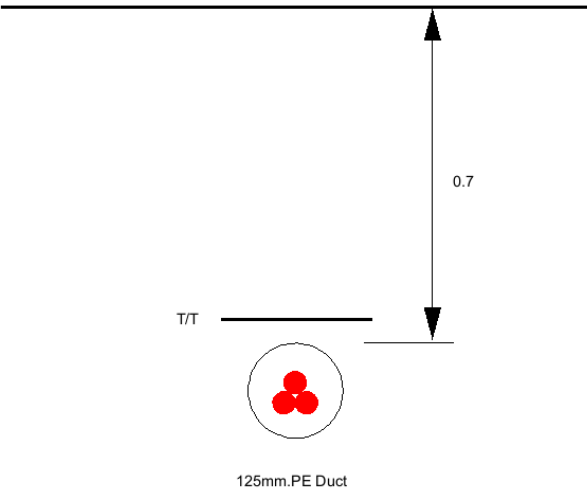
Cross Section : 9777476




Cross Section  
9777476

<p>1. The position of the apparatus shown on this drawing is believed to be correct but the original landmarks may have been altered since the apparatus was installed.</p> <p>2. The exact position of the apparatus should be verified - use approved cable avoidance tools prior to excavation using suitable hand tools.</p> <p>3. It is essential that trial holes are carefully made avoiding the use of mechanical tools or picks until the exact location of all the cables have been determined.</p> <p>4. It must be assumed that there is a service cable into each property, lamp column and street sign, etc.</p> <p>5. All cables must be treated as being live unless proved otherwise by UK Power Networks.</p> <p>6. The information proved must be given to all people working near UK Power Networks plant and equipment. Do not use plans more than 3 months after the issue date for excavation purposes.</p> <p>7. Please be aware that electric cables/lines belonging to other owners of licensed electricity distribution systems may be present and it is your responsibility to identify their location.</p>	<p>1. UK Power Networks does not warrant that the information provided to you is correct. You rely upon it at your own risk.</p> <p>2. UK Power Networks does not exclude or limit its liability if it causes the death of any persons or causes personal injury to a person.</p> <p>3. Subject to paragraph 2 UK Power Networks has no liability to you in contract, in tort (including negligence), for breach of statutory duty or otherwise for any loss, damage, cost, claims, demands, or expenses that you or any third party may suffer or incur as a result of using the information provided whether for physical damage to property or for any economic loss (including without limitation loss of profit, loss of opportunity, loss of savings, loss of goodwill, loss of business, loss of use) or any special or consequential loss or damage whatsoever.</p> <p>4. This plan has been provided to you on the basis of the terms of use set out in the covering letter that accompanies this plan. If you do not accept and/or do not understand the terms of use set out in the covering letter you must not use the plan and must return it to the sender of the letter.</p> <p>5. You are responsible for the security of the information provided to you. It must not be given, sold or made available upon payment of a fee to a third party.</p>	<p>IF IN DOUBT - ASK! PHONE 0800 056 5866 EMERGENCY - If you damage a cable or line Phone 0800 783 8838 (24hrs) URGENTLY</p> 	 <p>ALWAYS LOOK UP BEFORE YOU START WORK Refer to HSE Guidance note GS6</p> <p>Maps produced at 1:2500 scale are Geo-Schematics which show LV mains cables and overhead lines (in some cases all voltages). Prior to carrying out excavations you must refer to the 1:500 records to determine the location of all known underground plant and equipment.</p>
---	--	--	--

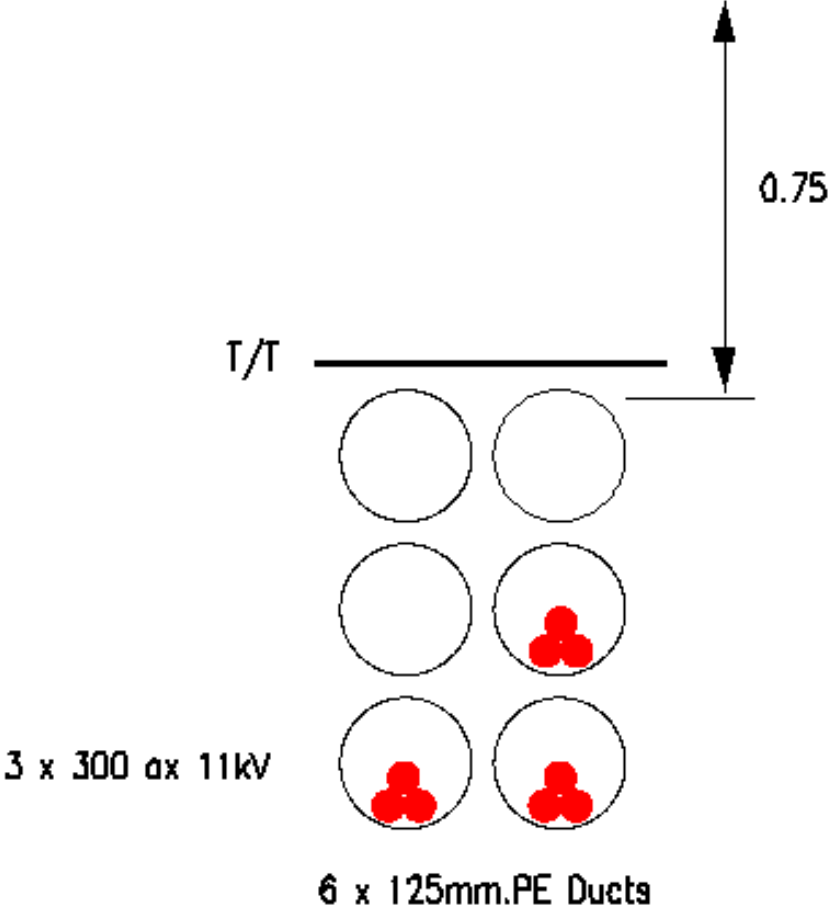
Cross Section : 2028494



Cross Section  
2028494

<p>1. The position of the apparatus shown on this drawing is believed to be correct but the original landmarks may have been altered since the apparatus was installed.</p> <p>2. The exact position of the apparatus should be verified - use approved cable avoidance tools prior to excavation using suitable hand tools.</p> <p>3. It is essential that trial holes are carefully made avoiding the use of mechanical tools or picks until the exact location of all the cables have been determined.</p> <p>4. It must be assumed that there is a service cable into each property, lamp column and street sign, etc.</p> <p>5. All cables must be treated as being live unless proved otherwise by UK Power Networks.</p> <p>6. The information proved must be given to all people working near UK Power Networks plant and equipment. Do not use plans more than 3 months after the issue date for excavation purposes.</p> <p>7. Please be aware that electric cables/lines belonging to other owners of licensed electricity distribution systems may be present and it is your responsibility to identify their location.</p>	<p>1. UK Power Networks does not warrant that the information provided to you is correct. You rely upon it at your own risk.</p> <p>2. UK Power Networks does not exclude or limit its liability if it causes the death of any persons or causes personal injury to a person.</p> <p>3. Subject to paragraph 2 UK Power Networks has no liability to you in contract, in tort (including negligence), for breach of statutory duty or otherwise for any loss, damage, cost, claims, demands, or expenses that you or any third party may suffer or incur as a result of using the information provided whether for physical damage to property or for any economic loss (including without limitation loss of profit, loss of opportunity, loss of savings, loss of goodwill, loss of business, loss of use) or any special or consequential loss or damage whatsoever.</p> <p>4. This plan has been provided to you on the basis of the terms of use set out in the covering letter that accompanies this plan. If you do not accept and/or do not understand the terms of use set out in the covering letter you must not use the plan and must return it to the sender of the letter.</p> <p>5. You are responsible for the security of the information provided to you. It must not be given, sold or made available upon payment of a fee to a third party.</p>	<p>IF IN DOUBT - ASK! PHONE 0800 056 5866 EMERGENCY - If you damage a cable or line Phone 0800 783 8838 (24hrs) URGENTLY</p>	<p><b>UK Power Networks</b></p>
			<p>ALWAYS LOOK UP BEFORE YOU START WORK Refer to HSE Guidance note GS6</p>
<p>Maps produced at 1:2500 scale are Geo-Schematics which show LV mains cables and overhead lines (in some cases all voltages). Prior to carrying out excavations you must refer to the 1:500 records to determine the location of all known underground plant and equipment.</p>			

Cross Section : 2032927



Cross Section

1. UK Power Networks does not warrant that the information provided to you is correct. You rely upon it at your own risk.  
2. UK Power Networks does not exclude or limit its liability if it causes the death of any persons or causes personal injury to a person.  
3. Subject to paragraph 2 UK Power Networks has no liability to you in contract, in tort (including negligence), for breach of statutory duty or otherwise for any loss, damage, cost, claims, demands, or expenses that you or any third party may suffer or incur as a result of using the information provided whether for physical damage to property or for any economic loss (including without limitation loss of profit, loss of opportunity, loss of savings, loss of goodwill, loss of business, loss of use) or any special or consequential loss or damage whatsoever.  
4. This plan has been provided to you on the basis of the terms of use set out in the covering letter that accompanies this plan. If you do not accept and/or do not understand the terms of use set out in the covering letter you must not use the plan and must return it to the sender of the letter.  
5. You are responsible for the security of the information provided to you. It must not be given, sold or made available upon payment of a fee to a third party.

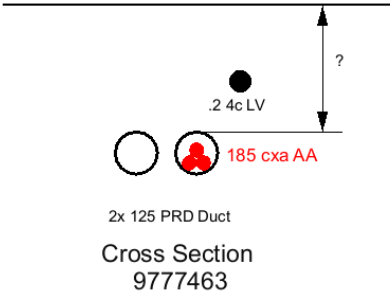
IF IN DOUBT - ASK! PHONE  
0800 056 5866  
EMERGENCY - If you damage  
a cable or line  
Phone 0800 783 8838 (24hrs)  
URGENTLY



ALWAYS LOOK UP BEFORE  
YOU START WORK  
Refer to HSE Guidance note GS6

Maps produced at 1:2500 scale are Geo-Schematics which show LV mains cables and overhead lines (in some cases all voltages). Prior to carrying out excavations you must refer to the 1:500 records to determine the location of all known underground plant and equipment.

Cross Section : 9777463



1. The position of the apparatus shown on this drawing is believed to be correct but the original landmarks may have been altered since the apparatus was installed.  
2. The exact position of the apparatus should be verified - use approved cable avoidance tools prior to excavation using suitable hand tools.  
3. It is essential that trial holes are carefully made avoiding the use of mechanical tools or picks until the exact location of all the cables have been determined.  
4. It must be assumed that there is a service cable into each property, lamp column and street sign, etc.  
5. All cables must be treated as being live unless proved otherwise by UK Power Networks.  
6. The information proved must be given to all people working near UK Power Networks plant and equipment. Do not use plans more than 3 months after the issue date for excavation purposes.  
7. Please be aware that electric cables/lines belonging to other owners of licensed electricity distribution systems may be present and it is your responsibility to identify their location.

1. UK Power Networks does not warrant that the information provided to you is correct. You rely upon it at your own risk.  
2. UK Power Networks does not exclude or limit its liability if it causes the death of any persons or causes personal injury to a person.  
3. Subject to paragraph 2 UK Power Networks has no liability to you in contract, in tort (including negligence), for breach of statutory duty or otherwise for any loss, damage, cost, claims, demands, or expenses that you or any third party may suffer or incur as a result of using the information provided whether for physical damage to property or for any economic loss (including without limitation loss of profit, loss of opportunity, loss of savings, loss of goodwill, loss of business, loss of use) or any special or consequential loss or damage whatsoever.  
4. This plan has been provided to you on the basis of the terms of use set out in the covering letter that accompanies this plan. If you do not accept and/or do not understand the terms of use set out in the covering letter you must not use the plan and must return it to the sender of the letter.  
5. You are responsible for the security of the information provided to you. It must not be given, sold or made available upon payment of a fee to a third party.

IF IN DOUBT - ASK! PHONE  
0800 056 5866  
EMERGENCY - If you damage  
a cable or line  
Phone 0800 783 8838 (24h rs)  
URGENTLY

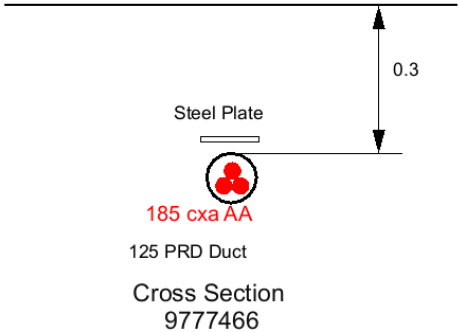


ALWAYS LOOK UP BEFORE  
YOU START WORK  
Refer to HSE Guidance note GS6

Maps produced at 1:2500 scale are Geo-Schematics which show LV mains cables and overhead lines (in some cases all voltages). Prior to carrying out excavations you must refer to the 1:500 records to determine the location of all known underground plant and equipment.



Cross Section : 9777466



1. The position of the apparatus shown on this drawing is believed to be correct but the original landmarks may have been altered since the apparatus was installed.  
2. The exact position of the apparatus should be verified - use approved cable avoidance tools prior to excavation using suitable hand tools.  
3. It is essential that trial holes are carefully made avoiding the use of mechanical tools or picks until the exact location of all the cables have been determined.  
4. It must be assumed that there is a service cable into each property, lamp column and street sign, etc.  
5. All cables must be treated as being live unless proved otherwise by UK Power Networks.  
6. The information proved must be given to all people working near UK Power Networks plant and equipment. Do not use plans more than 3 months after the issue date for excavation purposes.  
7. Please be aware that electric cables/lines belonging to other owners of licensed electricity distribution systems may be present and it is your responsibility to identify their location.

1. UK Power Networks does not warrant that the information provided to you is correct. You rely upon it at your own risk.  
2. UK Power Networks does not exclude or limit its liability if it causes the death of any persons or causes personal injury to a person.  
3. Subject to paragraph 2 UK Power Networks has no liability to you in contract, in tort (including negligence), for breach of statutory duty or otherwise for any loss, damage, cost, claims, demands, or expenses that you or any third party may suffer or incur as a result of using the information provided whether for physical damage to property or for any economic loss (including without limitation loss of profit, loss of opportunity, loss of savings, loss of goodwill, loss of business, loss of use) or any special or consequential loss or damage whatsoever.  
4. This plan has been provided to you on the basis of the terms of use set out in the covering letter that accompanies this plan. If you do not accept and/or do not understand the terms of use set out in the covering letter you must not use the plan and must return it to the sender of the letter.  
5. You are responsible for the security of the information provided to you. It must not be given, sold or made available upon payment of a fee to a third party.

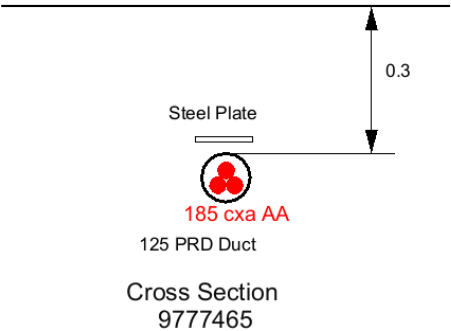
IF IN DOUBT - ASK! PHONE  
0800 056 5866  
EMERGENCY - If you damage  
a cable or line  
Phone 0800 783 8838 (24h rs)  
URGENTLY



ALWAYS LOOK UP BEFORE  
YOU START WORK  
Refer to HSE Guidance note GS6

Maps produced at 1:2500 scale are Geo-Schematics which show LV mains cables and overhead lines (in some cases all voltages). Prior to carrying out excavations you must refer to the 1:500 records to determine the location of all known underground plant and equipment.

Cross Section : 9777465



1. The position of the apparatus shown on this drawing is believed to be correct but the original landmarks may have been altered since the apparatus was installed.  
2. The exact position of the apparatus should be verified - use approved cable avoidance tools prior to excavation using suitable hand tools.  
3. It is essential that trial holes are carefully made avoiding the use of mechanical tools or picks until the exact location of all the cables have been determined.  
4. It must be assumed that there is a service cable into each property, lamp column and street sign, etc.  
5. All cables must be treated as being live unless proved otherwise by UK Power Networks.  
6. The information proved must be given to all people working near UK Power Networks plant and equipment. Do not use plans more than 3 months after the issue date for excavation purposes.  
7. Please be aware that electric cables/lines belonging to other owners of licensed electricity distribution systems may be present and it is your responsibility to identify their location.

1. UK Power Networks does not warrant that the information provided to you is correct. You rely upon it at your own risk.  
2. UK Power Networks does not exclude or limit its liability if it causes the death of any persons or causes personal injury to a person.  
3. Subject to paragraph 2 UK Power Networks has no liability to you in contract, in tort (including negligence), for breach of statutory duty or otherwise for any loss, damage, cost, claims, demands, or expenses that you or any third party may suffer or incur as a result of using the information provided whether for physical damage to property or for any economic loss (including without limitation loss of profit, loss of opportunity, loss of savings, loss of goodwill, loss of business, loss of use) or any special or consequential loss or damage whatsoever.  
4. This plan has been provided to you on the basis of the terms of use set out in the covering letter that accompanies this plan. If you do not accept and/or do not understand the terms of use set out in the covering letter you must not use the plan and must return it to the sender of the letter.  
5. You are responsible for the security of the information provided to you. It must not be given, sold or made available upon payment of a fee to a third party.

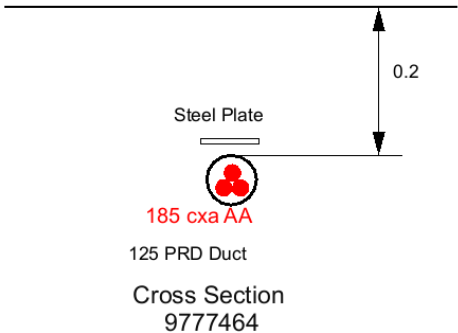
IF IN DOUBT - ASK! PHONE  
0800 056 5866  
EMERGENCY - If you damage  
a cable or line  
Phone 0800 783 8838 (24h rs)  
URGENTLY



ALWAYS LOOK UP BEFORE  
YOU START WORK  
Refer to HSE Guidance note GS6

Maps produced at 1:2500 scale are Geo-Schematics which show LV mains cables and overhead lines (in some cases all voltages). Prior to carrying out excavations you must refer to the 1:500 records to determine the location of all known underground plant and equipment.

Cross Section : 9777464



1. The position of the apparatus shown on this drawing is believed to be correct but the original landmarks may have been altered since the apparatus was installed.  
2. The exact position of the apparatus should be verified - use approved cable avoidance tools prior to excavation using suitable hand tools.  
3. It is essential that trial holes are carefully made avoiding the use of mechanical tools or picks until the exact location of all the cables have been determined.  
4. It must be assumed that there is a service cable into each property, lamp column and street sign, etc.  
5. All cables must be treated as being live unless proved otherwise by UK Power Networks.  
6. The information proved must be given to all people working near UK Power Networks plant and equipment. Do not use plans more than 3 months after the issue date for excavation purposes.  
7. Please be aware that electric cables/lines belonging to other owners of licensed electricity distribution systems may be present and it is your responsibility to identify their location.

1. UK Power Networks does not warrant that the information provided to you is correct. You rely upon it at your own risk.  
2. UK Power Networks does not exclude or limit its liability if it causes the death of any persons or causes personal injury to a person.  
3. Subject to paragraph 2 UK Power Networks has no liability to you in contract, in tort (including negligence), for breach of statutory duty or otherwise for any loss, damage, cost, claims, demands, or expenses that you or any third party may suffer or incur as a result of using the information provided whether for physical damage to property or for any economic loss (including without limitation loss of profit, loss of opportunity, loss of savings, loss of goodwill, loss of business, loss of use) or any special or consequential loss or damage whatsoever.  
4. This plan has been provided to you on the basis of the terms of use set out in the covering letter that accompanies this plan. If you do not accept and/or do not understand the terms of use set out in the covering letter you must not use the plan and must return it to the sender of the letter.  
5. You are responsible for the security of the information provided to you. It must not be given, sold or made available upon payment of a fee to a third party.

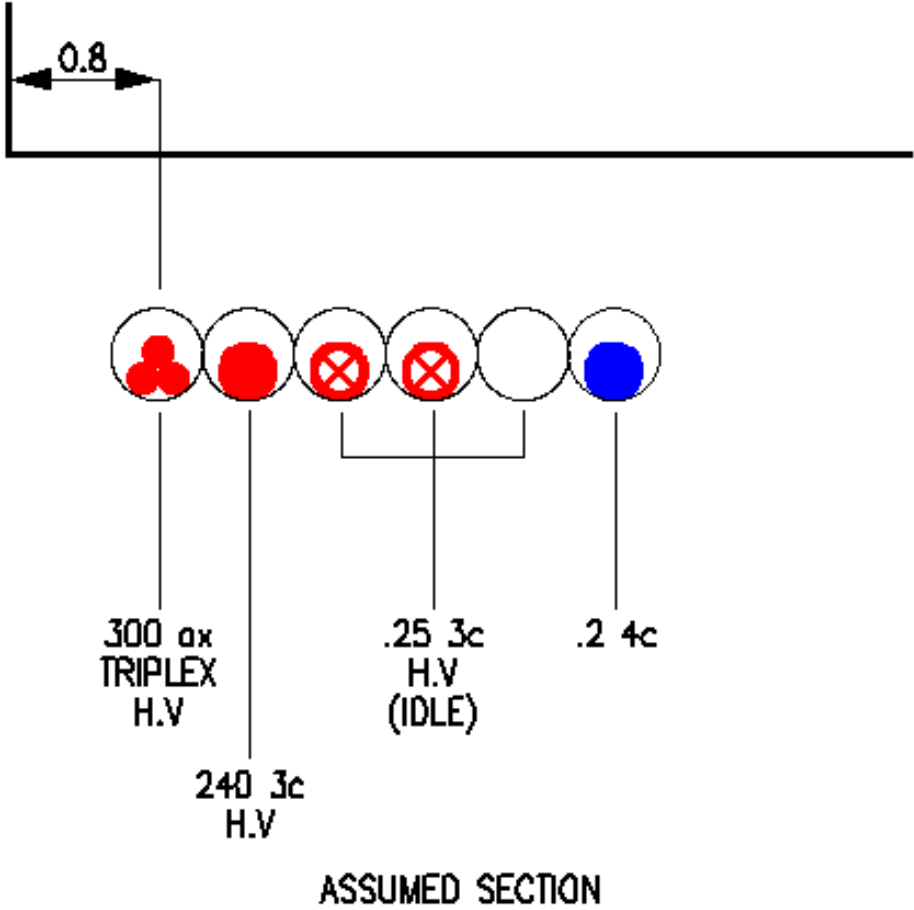
IF IN DOUBT - ASK! PHONE  
0800 056 5866  
EMERGENCY - If you damage  
a cable or line  
Phone 0800 783 8838 (24h rs)  
URGENTLY



ALWAYS LOOK UP BEFORE  
YOU START WORK  
Refer to HSE Guidance note GS6

Maps produced at 1:2500 scale are Geo-Schematics which show LV mains cables and overhead lines (in some cases all voltages). Prior to carrying out excavations you must refer to the 1:500 records to determine the location of all known underground plant and equipment.

Cross Section : 2044638



2044638  
ASSUMED SECTION

Cross Section  
2044638

1. The position of the apparatus shown on this drawing is believed to be correct but the original landmarks may have been altered since the apparatus was installed.  
2. The exact position of the apparatus should be verified - use approved cable avoidance tools prior to excavation using suitable hand tools.  
3. It is essential that trial holes are carefully made avoiding the use of mechanical tools or picks until the exact location of all the cables have been determined.  
4. It must be assumed that there is a service cable into each property, lamp column and street sign, etc.  
5. All cables must be treated as being live unless proved otherwise by UK Power Networks.  
6. The information proved must be given to all people working near UK Power Networks plant and equipment. Do not use plans more than 3 months after the issue date for excavation purposes.  
7. Please be aware that electric cables/lines belonging to other owners of licensed electricity distribution systems may be present and it is your responsibility to identify their location.

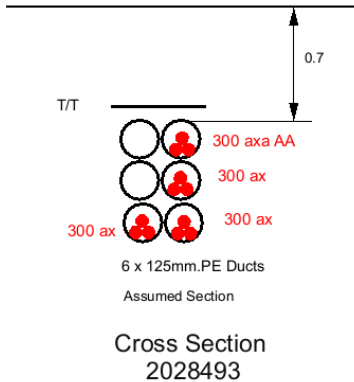
1. UK Power Networks does not warrant that the information provided to you is correct. You rely upon it at your own risk.  
2. UK Power Networks does not exclude or limit its liability if it causes the death of any persons or causes personal injury to a person.  
3. Subject to paragraph 2 UK Power Networks has no liability to you in contract, in tort (including negligence), for breach of statutory duty or otherwise for any loss, damage, cost, claims, demands, or expenses that you or any third party may suffer or incur as a result of using the information provided whether for physical damage to property or for any economic loss (including without limitation loss of profit, loss of opportunity, loss of savings, loss of goodwill, loss of business, loss of use) or any special or consequential loss or damage whatsoever.  
4. This plan has been provided to you on the basis of the terms of use set out in the covering letter that accompanies this plan. If you do not accept and/or do not understand the terms of use set out in the covering letter you must not use the plan and must return it to the sender of the letter.  
5. You are responsible for the security of the information provided to you. It must not be given, sold or made available upon payment of a fee to a third party.

<p>IF IN DOUBT - ASK! PHONE 0800 056 5866 EMERGENCY - If you damage a cable or line Phone 0800 783 8838 (24hrs) URGENTLY</p>	
	<p>ALWAYS LOOK UP BEFORE YOU START WORK Refer to HSE Guidance note GS6</p>

Maps produced at 1:2500 scale are Geo-Schematics which show LV mains cables and overhead lines (in some cases all voltages). Prior to carrying out excavations you must refer to the 1:500 records to determine the location of all known underground plant and equipment.



Cross Section : 2028493



1. The position of the apparatus shown on this drawing is believed to be correct but the original landmarks may have been altered since the apparatus was installed.  
2. The exact position of the apparatus should be verified - use approved cable avoidance tools prior to excavation using suitable hand tools.  
3. It is essential that trial holes are carefully made avoiding the use of mechanical tools or picks until the exact location of all the cables have been determined.  
4. It must be assumed that there is a service cable into each property, lamp column and street sign, etc.  
5. All cables must be treated as being live unless proved otherwise by UK Power Networks.  
6. The information proved must be given to all people working near UK Power Networks plant and equipment. Do not use plans more than 3 months after the issue date for excavation purposes.  
7. Please be aware that electric cables/lines belonging to other owners of licensed electricity distribution systems may be present and it is your responsibility to identify their location.

1. UK Power Networks does not warrant that the information provided to you is correct. You rely upon it at your own risk.  
2. UK Power Networks does not exclude or limit its liability if it causes the death of any persons or causes personal injury to a person.  
3. Subject to paragraph 2 UK Power Networks has no liability to you in contract, in tort (including negligence), for breach of statutory duty or otherwise for any loss, damage, cost, claims, demands, or expenses that you or any third party may suffer or incur as a result of using the information provided whether for physical damage to property or for any economic loss (including without limitation loss of profit, loss of opportunity, loss of savings, loss of goodwill, loss of business, loss of use) or any special or consequential loss or damage whatsoever.  
4. This plan has been provided to you on the basis of the terms of use set out in the covering letter that accompanies this plan. If you do not accept and/or do not understand the terms of use set out in the covering letter you must not use the plan and must return it to the sender of the letter.  
5. You are responsible for the security of the information provided to you. It must not be given, sold or made available upon payment of a fee to a third party.

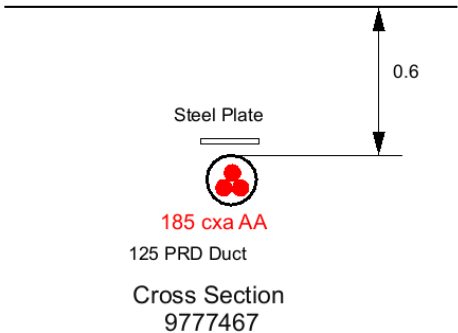
IF IN DOUBT - ASK! PHONE  
0800 056 5866  
EMERGENCY - If you damage  
a cable or line  
Phone 0800 783 8838 (24hrs)  
URGENTLY



ALWAYS LOOK UP BEFORE  
YOU START WORK  
Refer to HSE Guidance note GS6

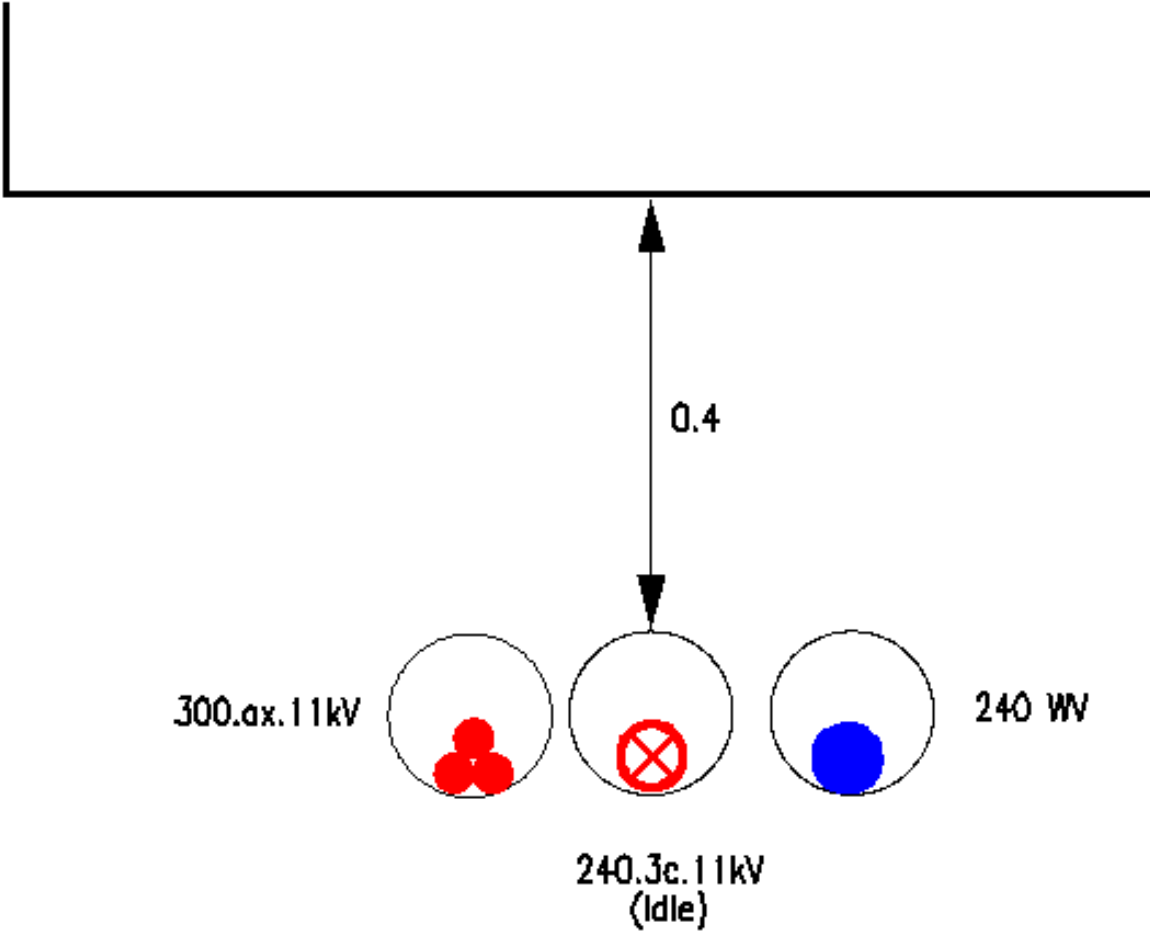
Maps produced at 1:2500 scale are Geo-Schematics which show LV mains cables and overhead lines (in some cases all voltages). Prior to carrying out excavations you must refer to the 1:500 records to determine the location of all known underground plant and equipment.

Cross Section : 9777467



<p>1. The position of the apparatus shown on this drawing is believed to be correct but the original landmarks may have been altered since the apparatus was installed.</p> <p>2. The exact position of the apparatus should be verified - use approved cable avoidance tools prior to excavation using suitable hand tools.</p> <p>3. It is essential that trial holes are carefully made avoiding the use of mechanical tools or picks until the exact location of all the cables have been determined.</p> <p>4. It must be assumed that there is a service cable into each property, lamp column and street sign, etc.</p> <p>5. All cables must be treated as being live unless proved otherwise by UK Power Networks.</p> <p>6. The information proved must be given to all people working near UK Power Networks plant and equipment. Do not use plans more than 3 months after the issue date for excavation purposes.</p> <p>7. Please be aware that electric cables/lines belonging to other owners of licensed electricity distribution systems may be present and it is your responsibility to identify their location.</p>	<p>1. UK Power Networks does not warrant that the information provided to you is correct. You rely upon it at your own risk.</p> <p>2. UK Power Networks does not exclude or limit its liability if it causes the death of any persons or causes personal injury to a person.</p> <p>3. Subject to paragraph 2 UK Power Networks has no liability to you in contract, in tort (including negligence), for breach of statutory duty or otherwise for any loss, damage, cost, claims, demands, or expenses that you or any third party may suffer or incur as a result of using the information provided whether for physical damage to property or for any economic loss (including without limitation loss of profit, loss of opportunity, loss of savings, loss of goodwill, loss of business, loss of use) or any special or consequential loss or damage whatsoever.</p> <p>4. This plan has been provided to you on the basis of the terms of use set out in the covering letter that accompanies this plan. If you do not accept and/or do not understand the terms of use set out in the covering letter you must not use the plan and must return it to the sender of the letter.</p> <p>5. You are responsible for the security of the information provided to you. It must not be given, sold or made available upon payment of a fee to a third party.</p>	<p>IF IN DOUBT - ASK! PHONE 0800 056 5866 EMERGENCY - If you damage a cable or line Phone 0800 783 8838 (24h rs) URGENTLY</p>	<div data-bbox="1912 1193 2231 1305"></div> <div data-bbox="1955 1332 2163 1377"><p>ALWAYS LOOK UP BEFORE YOU START WORK Refer to HSE Guidance note GS6</p></div> <div data-bbox="1704 1337 1827 1417"></div> <div data-bbox="1668 1449 2213 1500"><p>Maps produced at 1:2500 scale are Geo-Schematics which show LV mains cables and overhead lines (in some cases all voltages). Prior to carrying out excavations you must refer to the 1:500 records to determine the location of all known underground plant and equipment.</p></div>
---	--	---	--

Cross Section : 2044221



Cross Section

1. UK Power Networks does not warrant that the information provided to you is correct. You rely upon it at your own risk.  
2. UK Power Networks does not exclude or limit its liability if it causes the death of any persons or causes personal injury to a person.  
3. Subject to paragraph 2 UK Power Networks has no liability to you in contract, in tort (including negligence), for breach of statutory duty or otherwise for any loss, damage, cost, claims, demands, or expenses that you or any third party may suffer or incur as a result of using the information provided whether for physical damage to property or for any economic loss (including without limitation loss of profit, loss of opportunity, loss of savings, loss of goodwill, loss of business, loss of use) or any special or consequential loss or damage whatsoever.  
4. This plan has been provided to you on the basis of the terms of use set out in the covering letter that accompanies this plan. If you do not accept and/or do not understand the terms of use set out in the covering letter you must not use the plan and must return it to the sender of the letter.  
5. You are responsible for the security of the information provided to you. It must not be given, sold or made available upon payment of a fee to a third party.

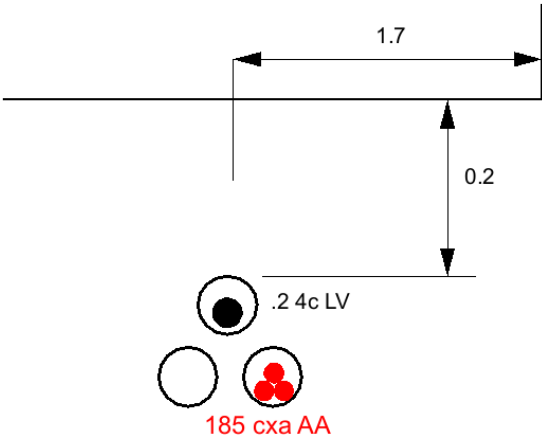
IF IN DOUBT - ASK! PHONE  
0800 056 5866  
EMERGENCY - If you damage  
a cable or line  
Phone 0800 783 8838 (24hrs)  
URGENTLY



ALWAYS LOOK UP BEFORE  
YOU START WORK  
Refer to HSE Guidance note GS6

Maps produced at 1:2500 scale are Geo-Schematics which show LV mains cables and overhead lines (in some cases all voltages). Prior to carrying out excavations you must refer to the 1:500 records to determine the location of all known underground plant and equipment.

Cross Section : 9777471



Cross Section  
9777471

1. The position of the apparatus shown on this drawing is believed to be correct but the original landmarks may have been altered since the apparatus was installed.  
2. The exact position of the apparatus should be verified - use approved cable avoidance tools prior to excavation using suitable hand tools.  
3. It is essential that trial holes are carefully made avoiding the use of mechanical tools or picks until the exact location of all the cables have been determined.  
4. It must be assumed that there is a service cable into each property, lamp column and street sign, etc.  
5. All cables must be treated as being live unless proved otherwise by UK Power Networks.  
6. The information proved must be given to all people working near UK Power Networks plant and equipment. Do not use plans more than 3 months after the issue date for excavation purposes.  
7. Please be aware that electric cables/lines belonging to other owners of licensed electricity distribution systems may be present and it is your responsibility to identify their location.

1. UK Power Networks does not warrant that the information provided to you is correct. You rely upon it at your own risk.  
2. UK Power Networks does not exclude or limit its liability if it causes the death of any persons or causes personal injury to a person.  
3. Subject to paragraph 2 UK Power Networks has no liability to you in contract, in tort (including negligence), for breach of statutory duty or otherwise for any loss, damage, cost, claims, demands, or expenses that you or any third party may suffer or incur as a result of using the information provided whether for physical damage to property or for any economic loss (including without limitation loss of profit, loss of opportunity, loss of savings, loss of goodwill, loss of business, loss of use) or any special or consequential loss or damage whatsoever.  
4. This plan has been provided to you on the basis of the terms of use set out in the covering letter that accompanies this plan. If you do not accept and/or do not understand the terms of use set out in the covering letter you must not use the plan and must return it to the sender of the letter.  
5. You are responsible for the security of the information provided to you. It must not be given, sold or made available upon payment of a fee to a third party.

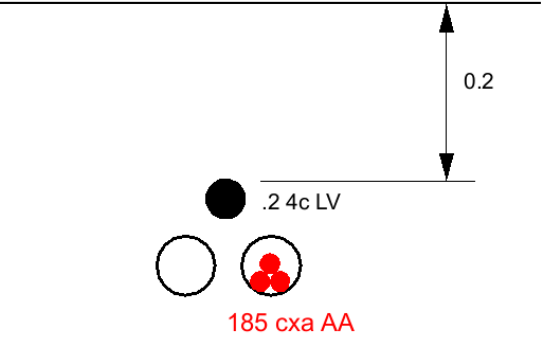
IF IN DOUBT - ASK! PHONE  
0800 056 5866  
EMERGENCY - If you damage  
a cable or line  
Phone 0800 783 8838 (24hrs)  
URGENTLY





ALWAYS LOOK UP BEFORE  
YOU START WORK  
Refer to HSE Guidance note GS6

Maps produced at 1:2500 scale are Geo-Schematics which show LV mains cables and overhead lines (in some cases all voltages). Prior to carrying out excavations you must refer to the 1:500 records to determine the location of all known underground plant and equipment.

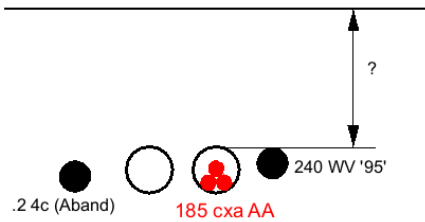
Cross Section : 9777474



Cross Section  
9777474

<p>1. The position of the apparatus shown on this drawing is believed to be correct but the original landmarks may have been altered since the apparatus was installed.</p> <p>2. The exact position of the apparatus should be verified - use approved cable avoidance tools prior to excavation using suitable hand tools.</p> <p>3. It is essential that trial holes are carefully made avoiding the use of mechanical tools or picks until the exact location of all the cables have been determined.</p> <p>4. It must be assumed that there is a service cable into each property, lamp column and street sign, etc.</p> <p>5. All cables must be treated as being live unless proved otherwise by UK Power Networks.</p> <p>6. The information proved must be given to all people working near UK Power Networks plant and equipment. Do not use plans more than 3 months after the issue date for excavation purposes.</p> <p>7. Please be aware that electric cables/lines belonging to other owners of licensed electricity distribution systems may be present and it is your responsibility to identify their location.</p>	<p>1. UK Power Networks does not warrant that the information provided to you is correct. You rely upon it at your own risk.</p> <p>2. UK Power Networks does not exclude or limit its liability if it causes the death of any persons or causes personal injury to a person.</p> <p>3. Subject to paragraph 2 UK Power Networks has no liability to you in contract, in tort (including negligence), for breach of statutory duty or otherwise for any loss, damage, cost, claims, demands, or expenses that you or any third party may suffer or incur as a result of using the information provided whether for physical damage to property or for any economic loss (including without limitation loss of profit, loss of opportunity, loss of savings, loss of goodwill, loss of business, loss of use) or any special or consequential loss or damage whatsoever.</p> <p>4. This plan has been provided to you on the basis of the terms of use set out in the covering letter that accompanies this plan. If you do not accept and/or do not understand the terms of use set out in the covering letter you must not use the plan and must return it to the sender of the letter.</p> <p>5. You are responsible for the security of the information provided to you. It must not be given, sold or made available upon payment of a fee to a third party.</p>	<p>IF IN DOUBT - ASK! PHONE 0800 056 5866 EMERGENCY - If you damage a cable or line Phone 0800 783 8838 (24hrs) URGENTLY</p> 	 <p>ALWAYS LOOK UP BEFORE YOU START WORK Refer to HSE Guidance note GS6</p> <p>Maps produced at 1:2500 scale are Geo-Schematics which show LV mains cables and overhead lines (in some cases all voltages). Prior to carrying out excavations you must refer to the 1:500 records to determine the location of all known underground plant and equipment.</p>
---	--	--	--

Cross Section : 9777472



Cross Section  
9777472

<p>1. The position of the apparatus shown on this drawing is believed to be correct but the original landmarks may have been altered since the apparatus was installed.</p> <p>2. The exact position of the apparatus should be verified - use approved cable avoidance tools prior to excavation using suitable hand tools.</p> <p>3. It is essential that trial holes are carefully made avoiding the use of mechanical tools or picks until the exact location of all the cables have been determined.</p> <p>4. It must be assumed that there is a service cable into each property, lamp column and street sign, etc.</p> <p>5. All cables must be treated as being live unless proved otherwise by UK Power Networks.</p> <p>6. The information proved must be given to all people working near UK Power Networks plant and equipment. Do not use plans more than 3 months after the issue date for excavation purposes.</p> <p>7. Please be aware that electric cables/lines belonging to other owners of licensed electricity distribution systems may be present and it is your responsibility to identify their location.</p>	<p>1. UK Power Networks does not warrant that the information provided to you is correct. You rely upon it at your own risk.</p> <p>2. UK Power Networks does not exclude or limit its liability if it causes the death of any persons or causes personal injury to a person.</p> <p>3. Subject to paragraph 2 UK Power Networks has no liability to you in contract, in tort (including negligence), for breach of statutory duty or otherwise for any loss, damage, cost, claims, demands, or expenses that you or any third party may suffer or incur as a result of using the information provided whether for physical damage to property or for any economic loss (including without limitation loss of profit, loss of opportunity, loss of savings, loss of goodwill, loss of business, loss of use) or any special or consequential loss or damage whatsoever.</p> <p>4. This plan has been provided to you on the basis of the terms of use set out in the covering letter that accompanies this plan. If you do not accept and/or do not understand the terms of use set out in the covering letter you must not use the plan and must return it to the sender of the letter.</p> <p>5. You are responsible for the security of the information provided to you. It must not be given, sold or made available upon payment of a fee to a third party.</p>	<p>IF IN DOUBT - ASK! PHONE 0800 056 5866 EMERGENCY - If you damage a cable or line Phone 0800 783 8838 (24hrs) URGENTLY</p>	<div data-bbox="1912 1193 2231 1305"></div> <div data-bbox="1955 1332 2163 1377"><p>ALWAYS LOOK UP BEFORE YOU START WORK Refer to HSE Guidance note GS6</p></div> <div data-bbox="1704 1337 1827 1417"></div> <div data-bbox="1668 1445 2213 1500"><p>Maps produced at 1:2500 scale are Geo-Schematics which show LV mains cables and overhead lines (in some cases all voltages). Prior to carrying out excavations you must refer to the 1:500 records to determine the location of all known underground plant and equipment.</p></div>
---	--	--	--