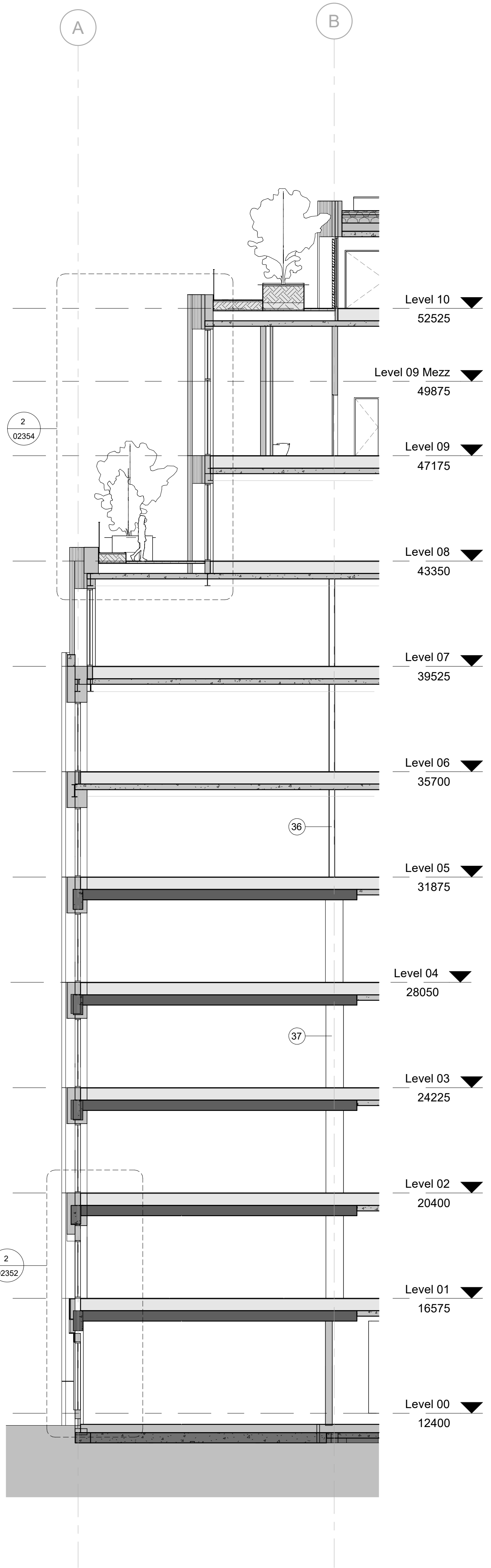
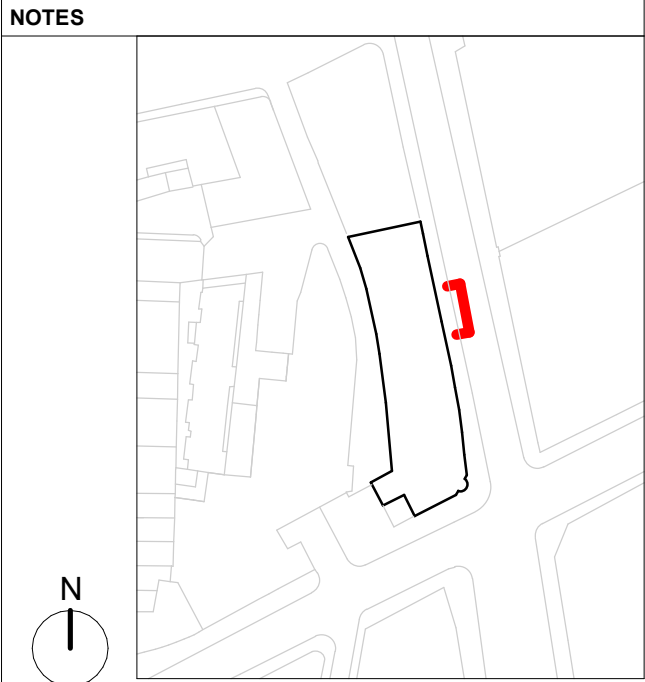


1 Proposed Farrington Detail Elevation  
1 : 100



2 Proposed Farrington Detail Section  
1 : 100



**GENERAL NOTES:**

The internal layouts and ancillary areas of buildings will be subject to design development.

The precise location of walls, internal doors, columns, risers and the detailed layout of bathroom and kitchen areas will be the subject of non-material changes and may vary from the internal layouts set out in these plans.

These minor alterations will not affect the position and arrangements of external doors and windows nor will they affect the relative relationship between habitable rooms and windows.

All materials shown or highlighted are indicative only and may be subject to changes made during detailed design development.

CCTV and external lighting on the external facade.

All structure is subject to ongoing design co-ordination and development.

- Key:**
- GRC/Precast concrete facade
  - Opaque metal panels
  - Terrace doors
  - Fixed glazing with aluminium frame
  - Metal balustrade
  - Rough bed Portland stone facade
  - Fixed glazing with aluminium frame and operable side panels
  - Bioclimate landscaping and tree planting
  - Architectural Louvre
  - Climbing plant wall
  - Existing ribbed concrete slab
  - Louvre facade
  - Bridge terrace
  - Hollowcore concrete slab 200mm
  - Void former
  - Existing slab foundation
  - Louvre plant screen
  - Semicircular sliding doors
  - Decorative metal fixture
  - Polished texture concrete
  - Rough texture concrete
  - Raised access floor with pedestals
  - Mineral wool insulation
  - Fire stop
  - Functional louvres
  - Terrazzo over screed
  - Two layers of plasterboard
  - Non combustible insulation
  - Blue roof
  - Terrazzo
  - Lift overrun
  - Terrace glazed door
  - GRC/Precast concrete lantern
  - Weathered steel to Saffron Hill lower levels
  - Semicircular sliding doors
  - Granite
  - New steel column
  - Retained concrete column
  - PV panels

P01 09/04/25 MMP/MN Planning Submission  
- 31/03/25 MMP/MN Planning Issue

## PLANNING

rev	date	author / check	comments
P01	09/04/25	MMP/MN	Planning Submission
-	31/03/25	MMP/MN	Planning Issue

**DSDHA**  
357 Kennington Lane London SE11 5QY  
T 020 7703 3555  
W www.dsdha.co.uk

project			
<b>19 Charterhouse Street</b> 19 Charterhouse, London, EC1N 6RA			
Farrview Limited			
drawing title			
Proposed Detailed Elevation - Farrington Road			
drawn	date	size	scale
MN	31/03/25	A1	1 : 100
DSDHA Project Ref		revision	
369		Subsidiary Code	P01
drawing number			
19CS -DSD -MB -ZZ -DR -A			-02351
REPORT DISCREPANCIES DO NOT SCALE FROM THIS DRAWING COPYRIGHT DSDHA		USE LATEST REVISION CHECK DIMENSIONS ON SITE DSDHA Limited Registered in England & Wales 4282335	