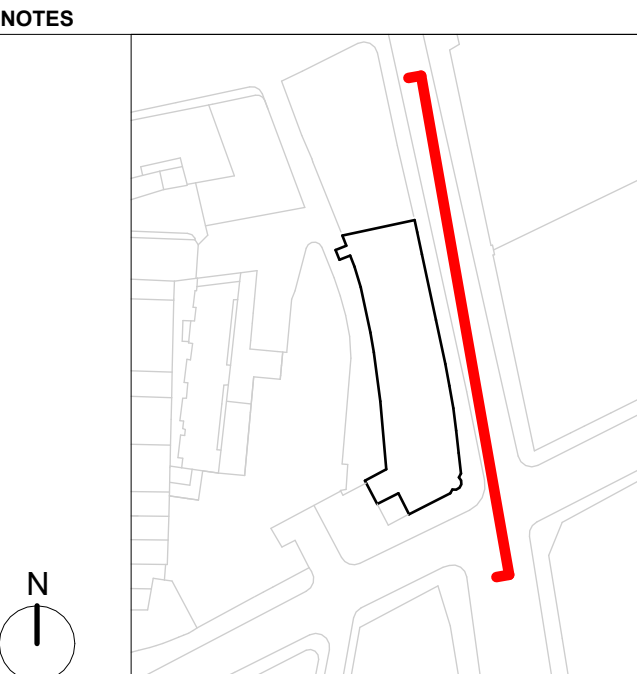




- Lift Overrun
57725
- Roof Level
56075
- Level 10
52525
- Level 09 Mezz
49875
- Level 09
47175
- Level 08
43350
- Level 07
39525
- Level 06
35700
- Level 05
31875
- Level 04
28050
- Level 03
24225
- Level 02
20400
- Level 01
16575
- Level 00
12400



GENERAL NOTES:

The internal layouts and ancillary areas of buildings will be subject to design development.

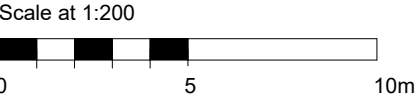
The precise location of walls, internal doors, columns, risers and the detailed layout of bathroom and kitchen areas will be the subject of non-material changes and may vary from the internal layouts set out in these plans.

These minor alterations will not affect the position and arrangements of external doors and windows nor will they affect the relative relationship between habitable rooms and windows.

All materials shown or highlighted are indicative only and may be subject to changes made during detailed design development.

CCTV and external lighting on the external facade.

All structure is subject to ongoing design co-ordination and development.



P01	09/04/25	MMP/IMN	Planning Submission
-	31/03/25	MMP/IMN	Planning Issue

PLANNING

rev	date	author / check	comments
DSDHA 357 Kennington Lane London SE11 5QY T 020 7703 3555 W www.dsdha.co.uk			
project			
19 Charterhouse Street 19 Charterhouse, London, EC1N 6RA			
Farview Limited			
drawing title			
Proposed Context Elevation East - Farringdon Road			
drawn	date	size	scale
SZ	31/03/25	A1	1 : 200
DSDHA Project Ref		revision	
369		Suitability Code	Revision P01
drawing number			
19CS -DSD -MB -ZZ -DR -A			-02405
REPORT DISCREPANCIES DO NOT SCALE FROM THIS DRAWING COPYRIGHT DSDHA		USE LATEST REVISION CHECK DIMENSIONS ON SITE DSDHA Limited Registered in England & Wales 4282335	