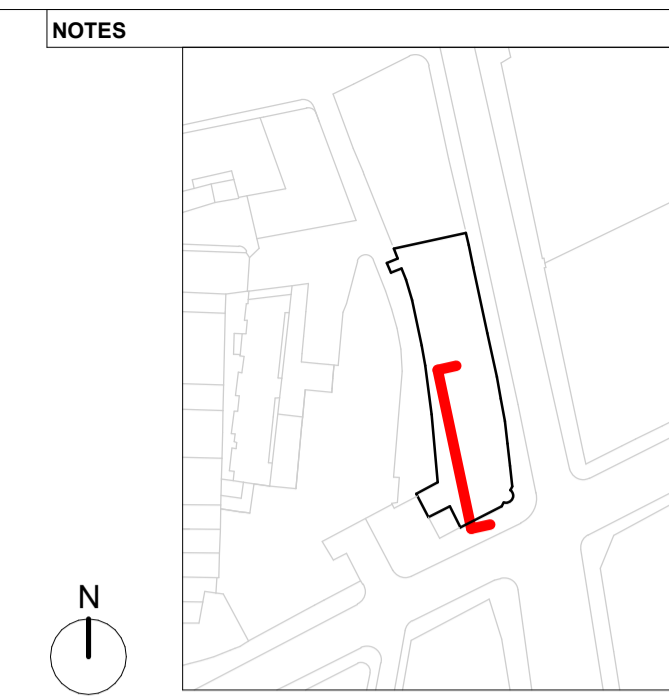


CONTINUES ON 19CS-DSD-MB-DR-A-02301

- Lift Overrun ▼ 57725
- Roof Level ▼ 56075
- Level 10 ▼ 52525
- Level 09 Mezz ▼ 49875
- Level 09 ▼ 47175
- Level 08 ▼ 43350
- Level 07 ▼ 39525
- Level 06 ▼ 35700
- Level 05 ▼ 31875
- Level 04 ▼ 28050
- Level 03 ▼ 24225
- Level 02 ▼ 20400
- Level 01 ▼ 16575
- Level 00 ▼ 12400
- Level -01 ▼ 8650
- Level -02 ▼ 4450



NOTES

GENERAL NOTES:

The internal layouts and ancillary areas of buildings will be subject to design development.

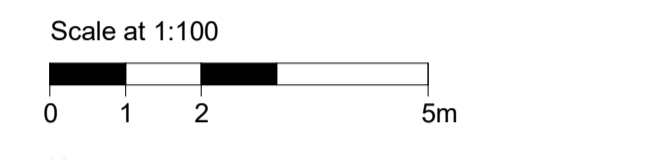
The precise location of walls, internal doors, columns, risers and the detailed layout of bathroom and kitchen areas will be the subject of non-material changes and may vary from the internal layouts set out in these plans.

These minor alterations will not affect the position and arrangements of external doors and windows nor will they affect the relative relationship between habitable rooms and windows.

All materials shown or highlighted are indicative only and may be subject to changes made during detailed design development.

CCTV and external lighting on the external facade.

All structure is subject to ongoing design co-ordination and development.



- Key:**
- 1. Lift overrun
 - 2. GRC/Precast concrete
 - 3. PV Panels
 - 4. Biodiverse landscaping and tree planting
 - 5. Metal balustrade
 - 6. GRC/Precast concrete lantern
 - 7. Fixed glazing with metal frame
 - 8. Fixed glazing with metal frame and operable opaque side panels
 - 9. Roach bed Portland stone
 - 10. Rough texture concrete
 - 11. Existing ribbed concrete slab
 - 12. Louvres
 - 13. Lobby metal stair
 - 14. Bridge garden terrace
 - 15. Hollowcore concrete slab 200mm
 - 16. Void former
 - 17. Existing slab foundation
 - 18. Metal louvred plant screen
 - 19. Plant utility stair
 - 20. Transfer lift
 - 21. Lift shaft
 - 22. Riser
 - 23. Firefighters stair core
 - 24. Two tier cycle track
 - 25. Existing concrete column
 - 26. New steel column
 - 27. RC Slab 375mm
 - 28. Dressing Room Lockers
 - 29. Existing foundation walls
 - 30. Air Handling Unit room
 - 31. Semicircular sliding door
 - 32. Lift lobby
 - 33. Metal reveal
 - 34. Climbing plant wall
 - 35. New steel beams
 - 36. Plant mezzanine floor elephant grating
 - 37. Existing pavement smoke vents
 - 38. Existing piles

- Existing Retained Structure
- Proposed

P01	09/04/25	MMP/IMN	Planning Submission
	31/03/25	MMP/IMN	Planning Issue

PLANNING

rev **date** **author / check** **comments**

DSDHA
 357 Kennington Lane London SE11 5QY
 T 020 7703 3555
 W www.dsdha.co.uk

project
19 Charterhouse Street
 19 Charterhouse, London, EC1N 6RA

Farrview Limited
 drawing title

Proposed Section Looking East EE.2

drawn	date	size	scale
MMP	31/03/25	A1	1 : 100

DSDHA Project Ref	revision
369	Subsidiary Code Revision P01

drawing number
 19CS-DSD-MB-ZZ-DR-A -02307

REPORT DISCREPANCIES DO NOT SCALE FROM THIS DRAWING. CHECK DIMENSIONS ON SITE. COPYRIGHT DSDHA. DSDHA Limited Registered in England & Wales 4282335

506 Central Market

Charterhouse Street