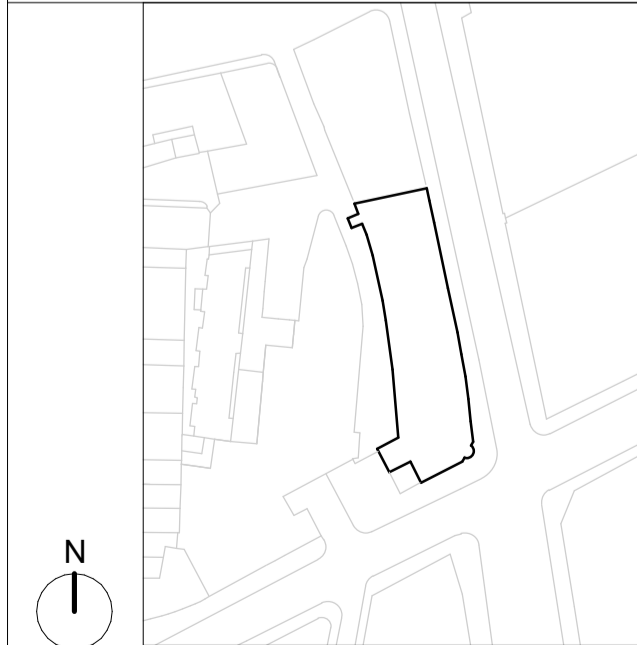


NOTES



Scale at 1:1250
0 10 20 30 40 50m

GENERAL NOTES:

The internal layouts and ancillary areas of buildings will be subject to design development.


The precise location of walls, internal doors, columns, risers and the detailed layout of bathroom and kitchen areas will be the subject of non-material changes and may vary from the internal layouts set out in these plans.

These minor alterations will not affect the position and arrangements of external doors and windows nor will they affect the relative relationship between habitable rooms and windows.

All materials shown or highlighted are indicative only and may be subject to changes made during detailed design development.

CCTV and external lighting on the external facade

All structure is subject to ongoing design co-ordination and development.

 Planning Application Site Boundary Line
(based on the Title boundary as interpreted from
the land registry title Plan ref: NGL 939143)

rev	date	author / check	comments
P01	09/04/25	MMP/MN	Planning Submission
-	31/03/25	MMP/MN	Planning Issue

PLANNING

DSDHA
357 Kennington Lane London SE11 5QY
T 020 7703 3555
W www.dsaha.co.uk

project
19 Charterhouse Street
19 Charterhouse, London, EC1N 6RA

Farrview Limited
drawing title

Proposed Location Plan

drawn	date	size	scale
MMP	31/03/25	A1	1:1250
DSDHA Project Ref	revision		
369	Subsidiary Code	Revision	P01
drawing number		19CS-DSD-MB-ZZ-DR-A -02000	

REPORT DISCREPANCIES DO NOT SCALE FROM THIS DRAWING COPYRIGHT DSDHA
USE LATEST REVISION CHECK DIMENSIONS ON SITE
DSDHA Limited Registered in England & Wales 4282335