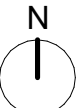
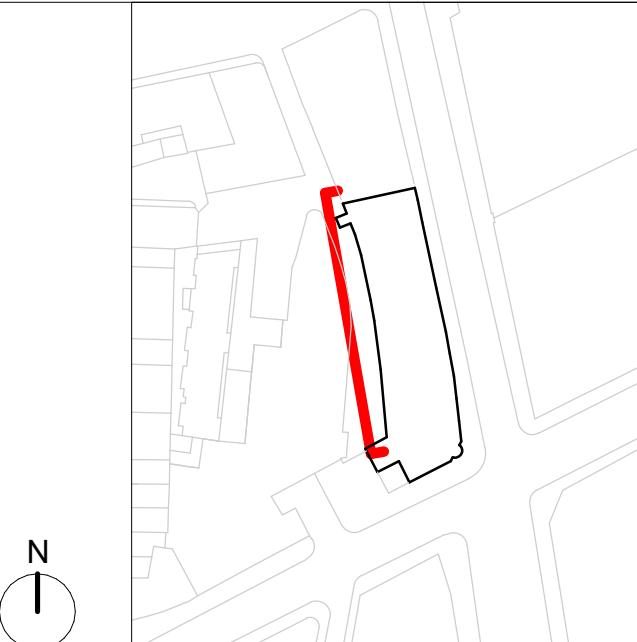


NOTES



GENERAL NOTES:

The internal layouts and ancillary areas of buildings will be subject to design development.

The precise location of walls, internal doors, columns, risers and the detailed layout of bathroom and kitchen areas will be the subject of non-material changes and may vary from the internal layouts set out in these plans.

These minor alterations will not affect the position and arrangements of external doors and windows nor will they affect the relative relationship between habitable rooms and windows.

All materials shown or highlighted are indicative only and may be subject to changes made during detailed design development.

CCTV and external lighting on the external facade.

All structure is subject to ongoing design co-ordination and development.

Scale at 1:100



Existing Retained Structure

Demolished Structure

Non-Loadbearing Elements to be Demolished

Demolished Floors/Roofs/Elevations



P01 09/04/25 MMP/INN Planning Submission  
31/03/25 MMP/INN Planning Issue

# PLANNING

rev date author / check comments  
**DSDHA**  
357 Kennington Lane London SE11 5QY  
T 020 7703 3555  
W www.dsdha.co.uk

project  
**19 Charterhouse Street**  
19 Charterhouse, London, EC1N 6RA

Farrview Limited  
drawing title

Demolition Elevation West - Saffron Hill

drawn	date	size	scale
MMP	31/03/25	A1	1 : 100
DSDHA Project Ref		revision	
369		Suitability Code	Revision P01
drawing number			

19CS -DSD -MB -ZZ -DR -A -11403

REPORT DISCREPANCIES  
DO NOT SCALE FROM THIS DRAWING  
COPYRIGHT DSDHA  
DSDHA Limited Registered in England & Wales 4282335

USE LATEST REVISION  
CHECK DIMENSIONS ON SITE