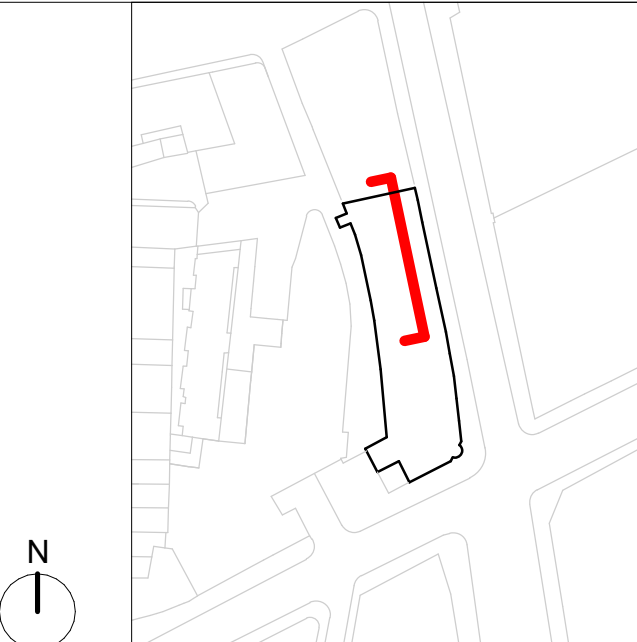


NOTES



GENERAL NOTES:

The internal layouts and ancillary areas of buildings will be subject to design development.

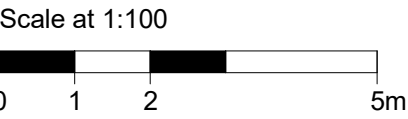
The precise location of walls, internal doors, columns, risers and the detailed layout of bathroom and kitchen areas will be the subject of non-material changes and may vary from the internal layouts set out in these plans.

These minor alterations will not affect the position and arrangements of external doors and windows nor will they affect the relative relationship between habitable rooms and windows.

All materials shown or highlighted are indicative only and may be subject to changes made during detailed design development.

CCTV and external lighting on the external facade.

All structure is subject to ongoing design co-ordination and development.



- Existing Retained Structure
- Demolished Structure
- Non-Loadbearing Elements to be Demolished
- Demolished Floors/Roofs/Elevations

P01	09/04/25	MMP/IMN	Planning Submission
-	31/03/25	MMP/IMN	Planning Issue

PLANNING

rev	date	author / check	comments
DSDHA 357 Kennington Lane London SE11 5QY T 020 7703 3555 W www.dsdha.co.uk			
project 19 Charterhouse Street 19 Charterhouse, London, EC1N 6RA			
Farview Limited			
drawing title Demolition Section Looking West AA.2			
drawn	date	size	scale
MMP	31/03/25	A1	1 : 100
DSDHA Project Ref		revision	
369		Suitability Code	Revision P01
drawing number			
19CS -DSD -MB -ZZ -DR -A			-11302
REPORT DISCREPANCIES DO NOT SCALE FROM THIS DRAWING COPYRIGHT DSDHA			
USE LATEST REVISION CHECK DIMENSIONS ON SITE DSDHA Limited Registered in England & Wales 4282335			

