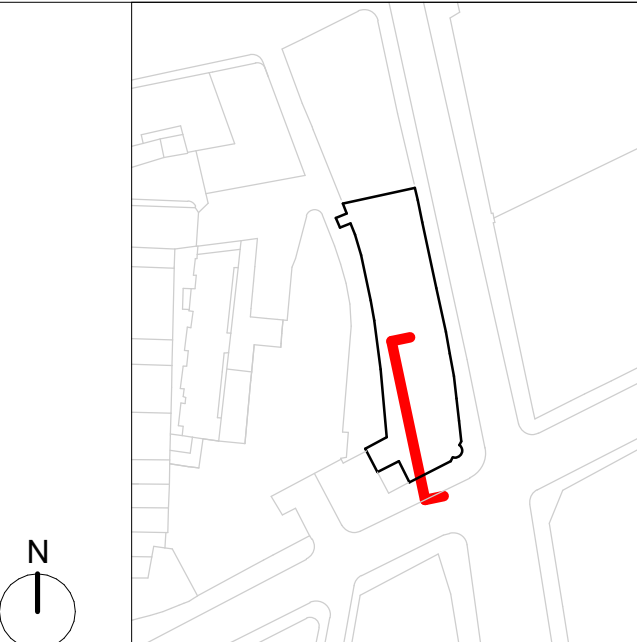


NOTES



GENERAL NOTES:

The internal layouts and ancillary areas of buildings will be subject to design development.

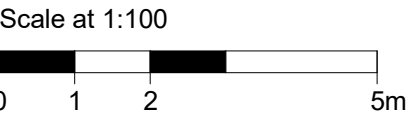
The precise location of walls, internal doors, columns, risers and the detailed layout of bathroom and kitchen areas will be the subject of non-material changes and may vary from the internal layouts set out in these plans.

These minor alterations will not affect the position and arrangements of external doors and windows nor will they affect the relative relationship between habitable rooms and windows.

All materials shown or highlighted are indicative only and may be subject to changes made during detailed design development.

CCTV and external lighting on the external facade.

All structure is subject to ongoing design co-ordination and development.



8

7

6

5

4

3

2

RF Level
40530

Lev 06
35410

Lev 05
31640

Lev 04
27820

Lev 03
23990

Lev 02
20180

Lev 01
16360

Lev GF 2
13410

Lev GF
12410

Charterhouse Street

Lev -01
8000

506 Central
Market

Lev -02
4450

CONTINUES ON 19CS-DSD-MB-DR-A-10301

P01	09/04/25	MMP/IMN	Planning Submission
-	31/03/25	MMP/IMN	Planning Issue

PLANNING

rev	date	author / check	comments
<div>DSDHA</div> <div>357 Kennington Lane London SE11 5QY</div> <div>T 020 7703 3555</div> <div>W www.dsdha.co.uk</div>			
project			
19 Charterhouse Street			
19 Charterhouse, London, EC1N 6RA			
Farview Limited			
drawing title			
Existing Section Looking East EE.2			
drawn	date	size	scale
MMP	31/03/25	A1	1 : 100
DSDHA Project Ref		revision	
369		Suitability Code	Revision
drawing number		P01	
19CS-DSD-MB-ZZ-DR-A		-10307	
REPORT DISCREPANCIES DO NOT SCALE FROM THIS DRAWING COPYRIGHT DSDHA		USE LATEST REVISION CHECK DIMENSIONS ON SITE COPYRIGHT DSDHA	
DSDHA Limited Registered in England & Wales 4282335			