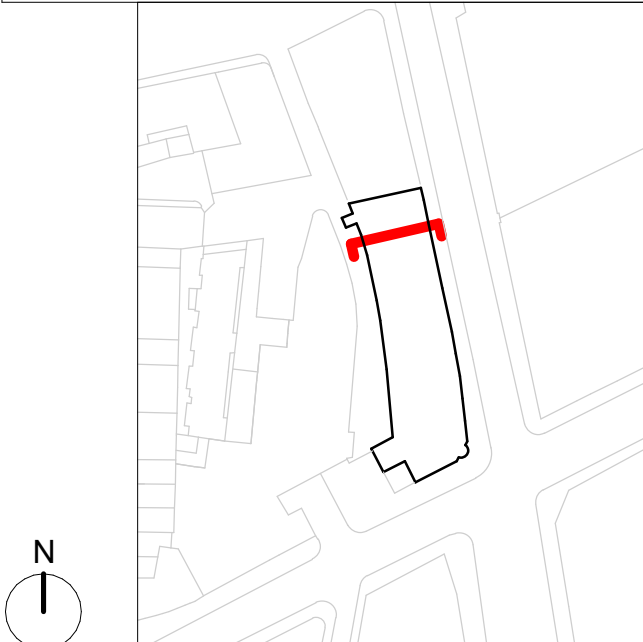




NOTES



GENERAL NOTES:

The internal layouts and ancillary areas of buildings will be subject to design development.

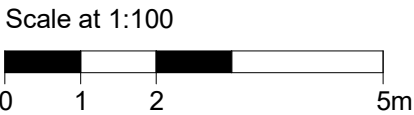
The precise location of walls, internal doors, columns, risers and the detailed layout of bathroom and kitchen areas will be the subject of non-material changes and may vary from the internal layouts set out in these plans.

These minor alterations will not affect the position and arrangements of external doors and windows nor will they affect the relative relationship between habitable rooms and windows.

All materials shown or highlighted are indicative only and may be subject to changes made during detailed design development.

CCTV and external lighting on the external facade.

All structure is subject to ongoing design co-ordination and development.



| | | | |
|-----|----------|---------|---------------------|
| P01 | 09/04/25 | MMP/IMN | Planning Submission |
| - | 31/03/25 | MMP/IMN | Planning Issue |

PLANNING

| rev | date | author / check | comments |
|---|----------|--|----------|
| <div>DSDHA</div> <div>357 Kennington Lane London SE11 5QY</div> <div>T 020 7703 3555</div> <div>W www.dsdha.co.uk</div> | | | |
| project | | | |
| 19 Charterhouse Street | | | |
| 19 Charterhouse, London, EC1N 6RA | | | |
| Farview Limited | | | |
| drawing title | | | |
| Existing Section Looking South BB | | | |
| drawn | date | size | scale |
| MMP | 31/03/25 | A1 | 1 : 100 |
| DSDHA Project Ref | | revision | |
| 369 | | Suitability Code | Revision |
| drawing number | | P01 | |
| 19CS -DSD -MB -ZZ -DR -A | | | -10303 |
| REPORT DISCREPANCIES DO NOT SCALE FROM THIS DRAWING COPYRIGHT DSDHA | | USE LATEST REVISION CHECK DIMENSIONS ON SITE COPYRIGHT DSDHA | |
| DSDHA Limited Registered in England & Wales 4282335 | | | |