

Report on Key Objections to the Proposed Gardeners' Building on the Mound at Highgate Cemetery

Planning Application Reference: 2024/5407/P

Introduction

This report offers a comprehensive review of objections submitted by grave owners, local residents, and stakeholders concerning the proposed Gardeners' Building on the Mound at Highgate Cemetery. The responses, drawn from planning application documents and associated correspondence, reveal a wide range of concerns rooted in heritage preservation, emotional impact, environmental considerations, procedural fairness, and design suitability.

1. Visual and Aesthetic Impact

1.1 Inappropriate Massing and Form

A core objection throughout the responses is that the scale and form of the proposed building is entirely incongruous with the sensitive cemetery setting. Multiple correspondents describe the proposed structure as resembling a "giant garage," a "public toilet," or a "prison block," noting that its large, rectangular volume, harsh materials, and metal shuttered openings are not in keeping with the existing fabric of Highgate Cemetery. The visual intrusion is felt most acutely from the Mound itself, a location surrounded by open skies and quiet landscaping, which the proposed two-storey building would dominate visually.

1.2 Obstruction of Key Views and Site Lines

The East Cemetery and the Mound are celebrated for their sweeping views and visual connections across the landscape. These include views of the surrounding woodlands, the Karl Marx memorial, and mature trees that contribute to the cemetery's tranquil ambiance. The proposed building, positioned along the Mound's path, would obstruct these views, severing sightlines and imposing an urban character on an otherwise naturalistic space. The introduction of elevated walkways, staircases, and service bays further complicates and detracts from the simplicity and elegance of the current environment.

1.3 Shading and Environmental Effects on Landscaping

Photographs and diagrams provided by objectors show that the building's placement would cast substantial shade over grave sites, particularly in winter. This not only alters the microclimate and affects planting schemes (including cherished wildflowers) but also visually alters the character of the site. Grieving families who visit for moments of peace in light-filled natural areas express distress at the idea that their loved ones' resting places will be thrown into permanent shadow.

2. Functional Disruption: Noise, Traffic and Use Incompatibility

2.1 Short-Term Construction Impacts

Nearly every objection notes that the construction process would be especially damaging to the Mound. Due to its central location within the East Cemetery and the narrow pedestrian paths leading to it, the logistics of construction are seen as unfeasible and highly disruptive. Concerns include noise pollution, vibration near fragile graves, disruption

to regular access routes, dust and air pollution, and the difficulty of moving construction machinery without damaging existing graves or landscaping.

2.2 Long-Term Operational Conflicts

Beyond the construction phase, many objectors cite the inappropriate nature of siting a working maintenance building in a cemetery setting. The inclusion of staff areas, public toilets, storage for gardening equipment, and loading bays are expected to generate noise, smells, and increased foot and vehicle traffic—all within a few metres of active graves. The path beside the proposed building is narrow and often requires pedestrians to step between graves to allow passage. Introducing larger volumes of vehicular activity to this path would be hazardous, disruptive, and fundamentally alter the cemetery's character.

2.3 Loss of Tranquillity and Solitude

Numerous letters emphasise that Highgate Cemetery's appeal lies in its silence, solitude, and capacity for deep emotional reflection. The Mound, in particular, is home to the cemetery's newest graves, meaning it sees regular visits from the recently bereaved. Introducing a utilitarian structure into this environment would, in the words of one objector, turn the sacred into the "backyard of an office block." The presence of a functioning service building with vehicle access, staff noise, and operational bustle is seen as fundamentally antithetical to the site's purpose.

3. Emotional and Moral Concerns

3.1 Violation of the Sanctity of the Mound

The Mound is widely considered a sanctuary—a space where mourning is conducted in privacy, often amidst wildflower meadows, olive trees, and birdsong. Grave owners speak of weekly visits, anniversary rituals, and emotional ties to the peacefulness of the landscape. The proposed development is seen as a brutal incursion into this sanctity, disrupting not only the visual experience but the emotional and psychological space of mourning.

3.2 Personal Stories of Loss and Reflection

Dozens of correspondents recount their personal relationships with the graves on the Mound. Widows speak of decades-long marriages and the solace found in sitting quietly beside graves. Parents speak of planting flowers on their children's resting places, and of the quiet community of mourners who tend the Mound as part of their grief. These deeply felt narratives underline the symbolic violence of inserting a working building into what many describe as a sacred landscape.

3.3 Disruption of Intergenerational and Communal Mourning

The Mound supports a mourning culture that includes families, elderly visitors, and young people. Objections describe how the proposed development may inhibit these visitors, especially those with reduced mobility. Narrow paths, new construction, and increased noise would all make these visits more difficult. Moreover, the perceived breach of promises made at the time of grave sales has undermined trust in the cemetery's stewards, causing pain and resentment.

4. Procedural Concerns and Consultation Failures

4.1 Late and Insufficient Notifications

One of the most repeated objections concerns the failure to notify grave owners about the

proposals in a timely manner. Many received emails in March—months after the formal consultation period had ended in January. In several cases, grave owners only learned of the application from fellow mourners or through chance. This lack of proactive engagement is seen as exclusionary and disrespectful, especially given the affected population's emotional vulnerability.

4.2 Lack of Targeted Engagement with Key Stakeholders

Grave owners on the Mound are not casual users of the space—they are central stakeholders. Yet they were not included in early discussions, workshops, or design feedback sessions. Objectors question why the Trust or its architects did not establish a working group or advisory panel including Mound grave owners. There is a strong sentiment that the process was deliberately opaque to reduce the volume of objections.

4.3 Perception of Deliberate Obfuscation

Several letters refer to a sense that the proposal was advanced in secret, or at least without meaningful transparency. This includes the placement of posters and public notices far from the Mound, the lack of on-site signage near active graves, and the absence of clear visualisations showing the structure's impact. Many request photomontages and shadow studies that were not included in the original submission.

5. Policy and Planning Context Conflicts

5.1 Violation of Metropolitan Open Land Protections

Highgate Cemetery is designated as Metropolitan Open Land (MOL), a status that affords it protections akin to Green Belt land. Camden's local planning policies emphasise maintaining openness and restricting development to preserve this character. Many objections cite this policy framework and argue that the Gardeners' Building, due to its mass and function, clearly contravenes these guidelines.

5.2 Undermining Grade I Listed Landscape Character

Highgate Cemetery is listed at Grade I on the Historic England Register of Parks and Gardens of Special Historic Interest. As such, changes must respect its historic landscape design, particularly its separation of service buildings from burial grounds. The proposed building, located centrally within an active area of burial and spiritual activity, is seen as fundamentally incompatible with these heritage values.

5.3 Camden Design Panel Concerns Ignored

The Camden Design Panel (CDP), consulted on the proposals, explicitly raised concerns about the Gardeners' Building and its effect on the openness of the cemetery. Objectors cite these concerns and question why the proposals moved forward unchanged. They call for a return to the original design intent of locating maintenance and support buildings near the cemetery's periphery, not its heart.

6. Alternative Locations and Reasonable Design Changes

6.1 Suggestions for Relocation

Almost every objection includes a recommendation for relocating the Gardeners' Building to a less sensitive site. Common suggestions include:

- The existing maintenance site near the East Cemetery entrance.

- The embankment in the West Cemetery, already designated for operations.
- The area adjacent to the Stoneleigh Terrace garages, which currently hosts skips and maintenance facilities.

6.2 Alternative Structural Approaches

Some respondents accept the need for retaining walls or support structures on the Mound. However, they propose simple landscape-integrated solutions:

- Retaining walls that blend into the slope.
- A low-height, one-storey utility structure embedded into the hill.
- Modular or demountable service buildings.

6.3 Consolidated Facilities in Existing Buildings

Others propose consolidating all service functions within a single building at the cemetery's perimeter. This would keep operational noise and activity away from active graves and streamline staff logistics. Several objectors ask whether modernising the existing entrance facilities could meet operational needs more effectively.

7. Design Representation and Misleading Visuals

7.1 Misleading Renderings

The renderings included with the planning application are widely criticised. Objectors argue that they present an unrealistic picture of the proposed structure, showing empty walkways, no staff or equipment, and sun-drenched concrete that resembles sandstone. These representations are seen as softening the building's real impact.

7.2 Inconsistency with Design Philosophy

The proposal claims to reference traditional English garden walls. However, respondents argue that this is disingenuous: a garden wall does not contain roller-shuttered vehicle bays, staircases, and elevated offices. The structure is widely described as utilitarian and inappropriate.

7.3 Lack of Technical Assessment

Several respondents call for proper environmental, visual, and acoustic studies. They request shadow diagrams, sightline renderings, and impact assessments on existing graves and landscaping. The absence of these documents undermines the proposal's credibility.

8. Ethical Breaches and Loss of Trust

8.1 Misrepresentation During Grave Plot Sales

Several grave owners allege that they were misled at the time of purchase. They were told the Mound would remain a secluded, green, and peaceful area reserved for grave owners. The sudden emergence of development plans for the same area is seen as a breach of trust, with some suggesting it amounts to misrepresentation under consumer protection laws.

8.2 Prioritisation of Tourism and Revenue

A broader theme emerges that the Trust is pivoting the cemetery toward tourism rather

than reverence. The overall development scheme, including ticket halls, cafes, and event spaces, is perceived as prioritising commercial growth at the expense of mourners. The Gardeners' Building, located in an area with high emotional sensitivity, becomes a symbol of this misalignment.

8.3 Emotional Harm and Community Disruption

Many objectors describe a community of mourners who have developed shared rituals of remembrance on the Mound. The proposal threatens this community cohesion. The loss of quiet space and the intrusion of noise, traffic, and strangers is seen not just as a planning misstep, but as a profound emotional betrayal.

Conclusion

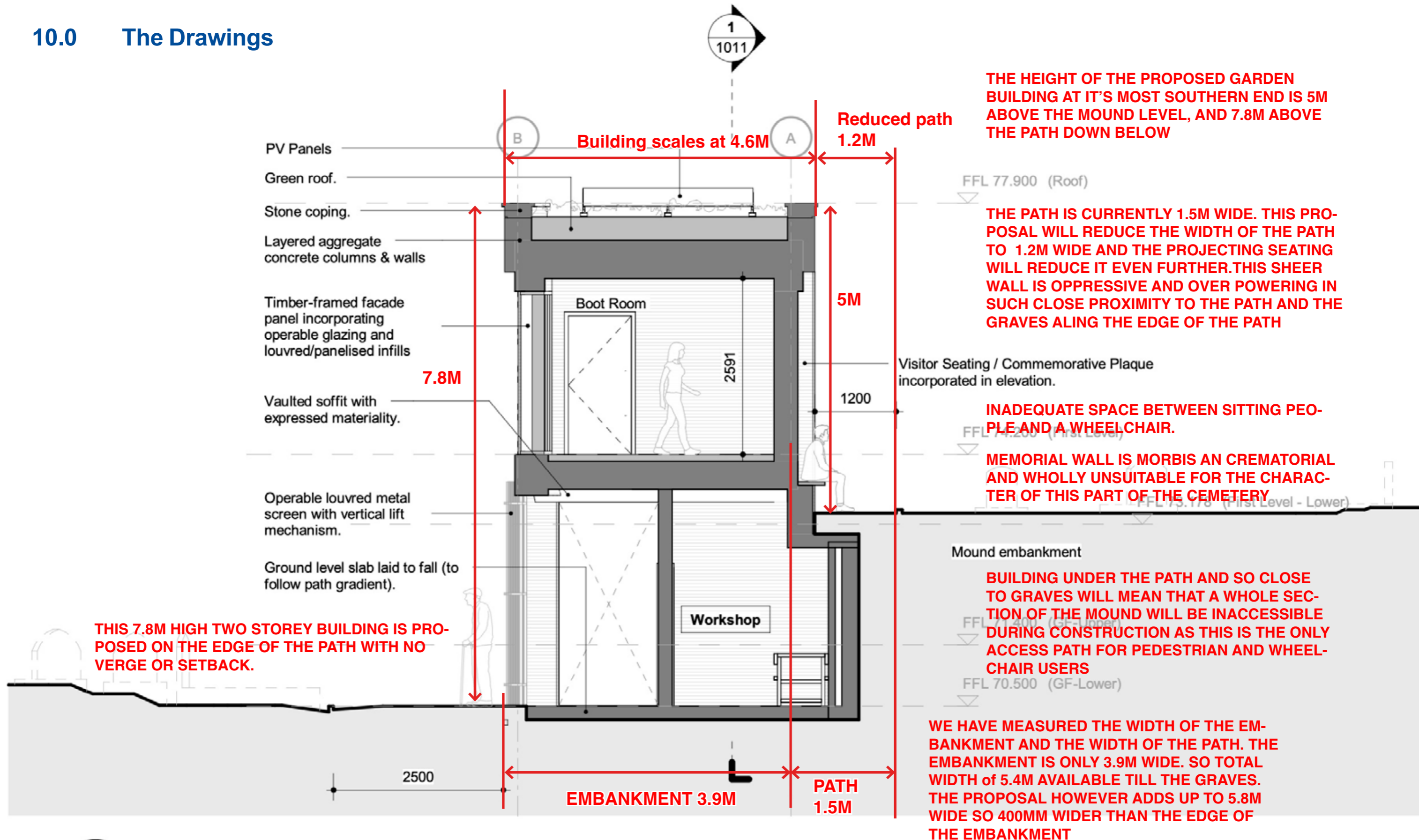
The objections to the proposed Gardeners' Building at Highgate Cemetery's Mound are comprehensive, deeply felt, and well-argued. They draw from emotional testimony, heritage policy, planning law, environmental principles, and architectural critique. The building is perceived not just as a physical imposition, but as a symbolic affront to the cemetery's values, history, and sacred function.

While there is broad support for the conservation and enhancement of Highgate Cemetery, objectors consistently call for a more sensitive approach. Many propose practical alternatives and demonstrate a willingness to collaborate on solutions that preserve the character of the Mound. In light of the evidence and strength of feeling, a reconsideration of the current plans is strongly warranted.

HIGHGATE CEMETERY

Observations on Submitted Proposals

10.0 The Drawings

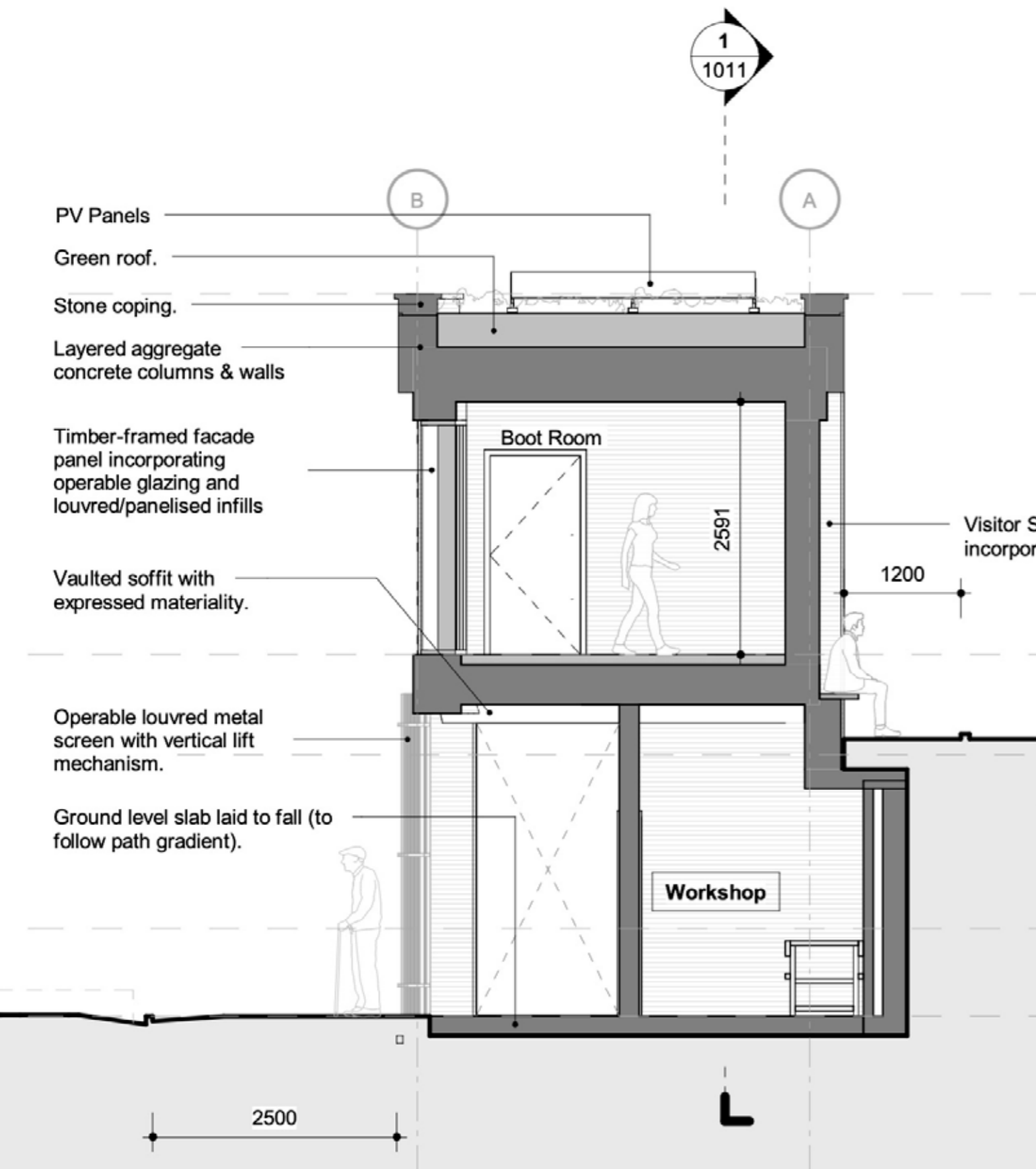


4
1011

Short Section - Workshop

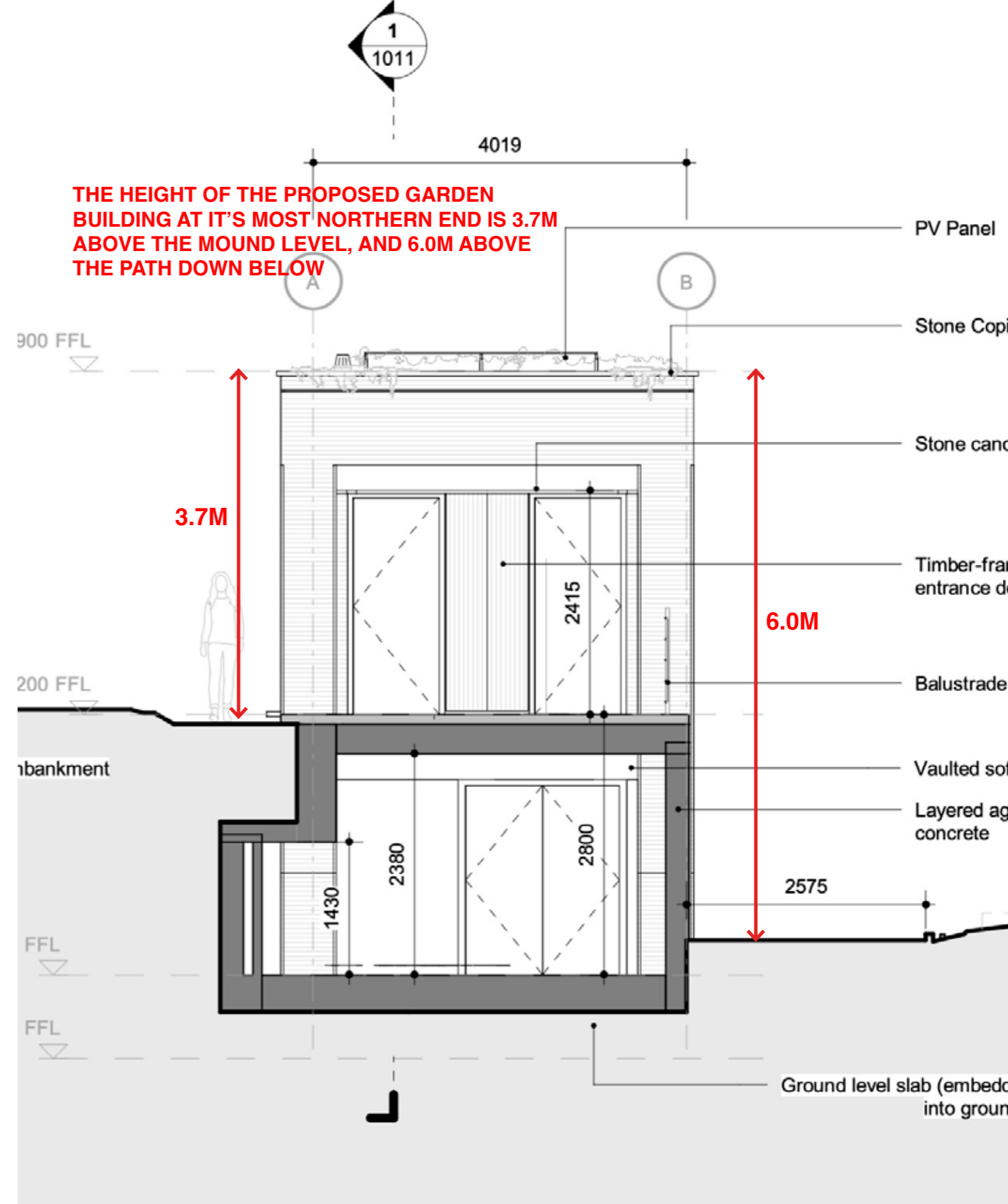
1 : 100

Gardeners' Building



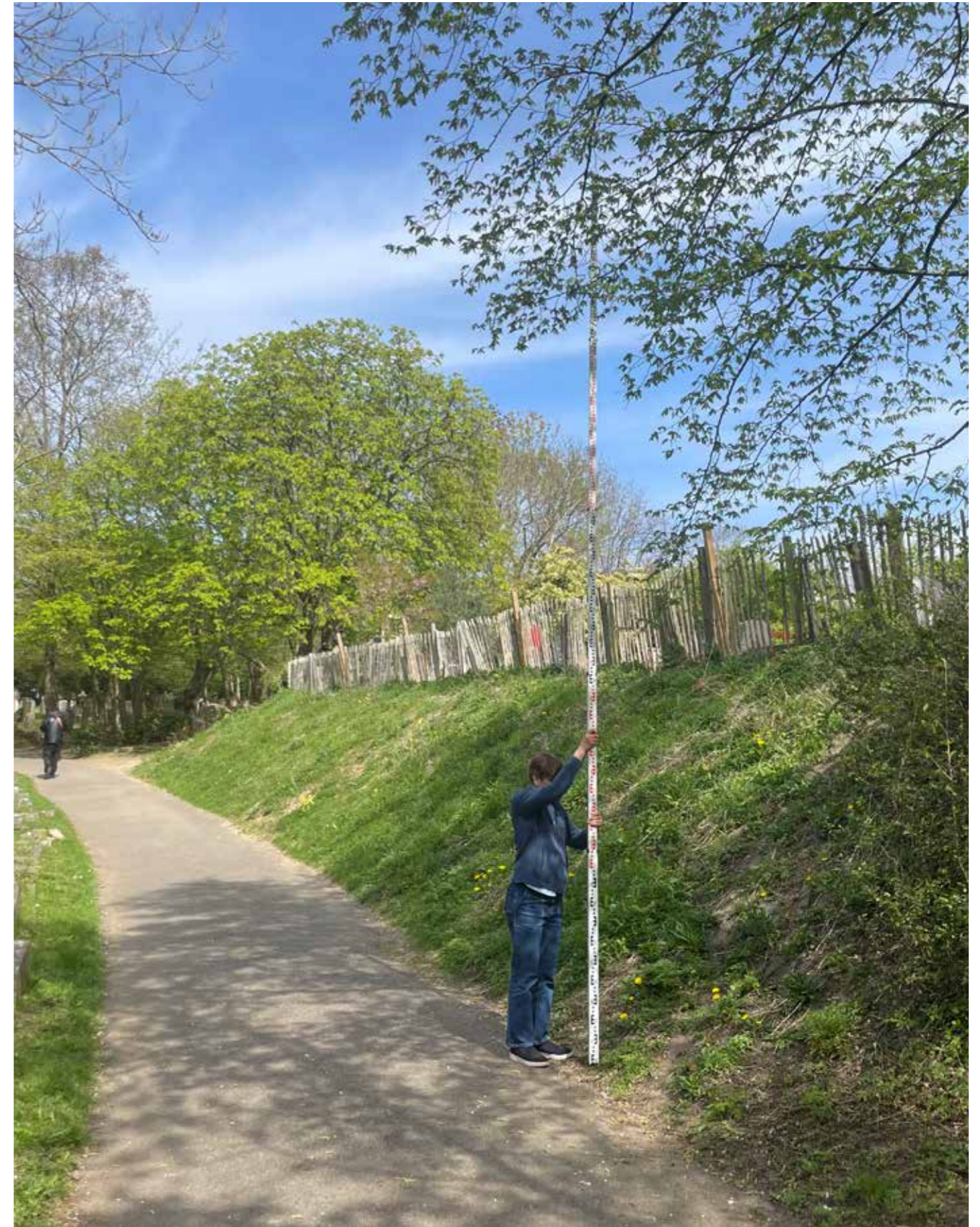
Section - Workshop

Gardeners' Building

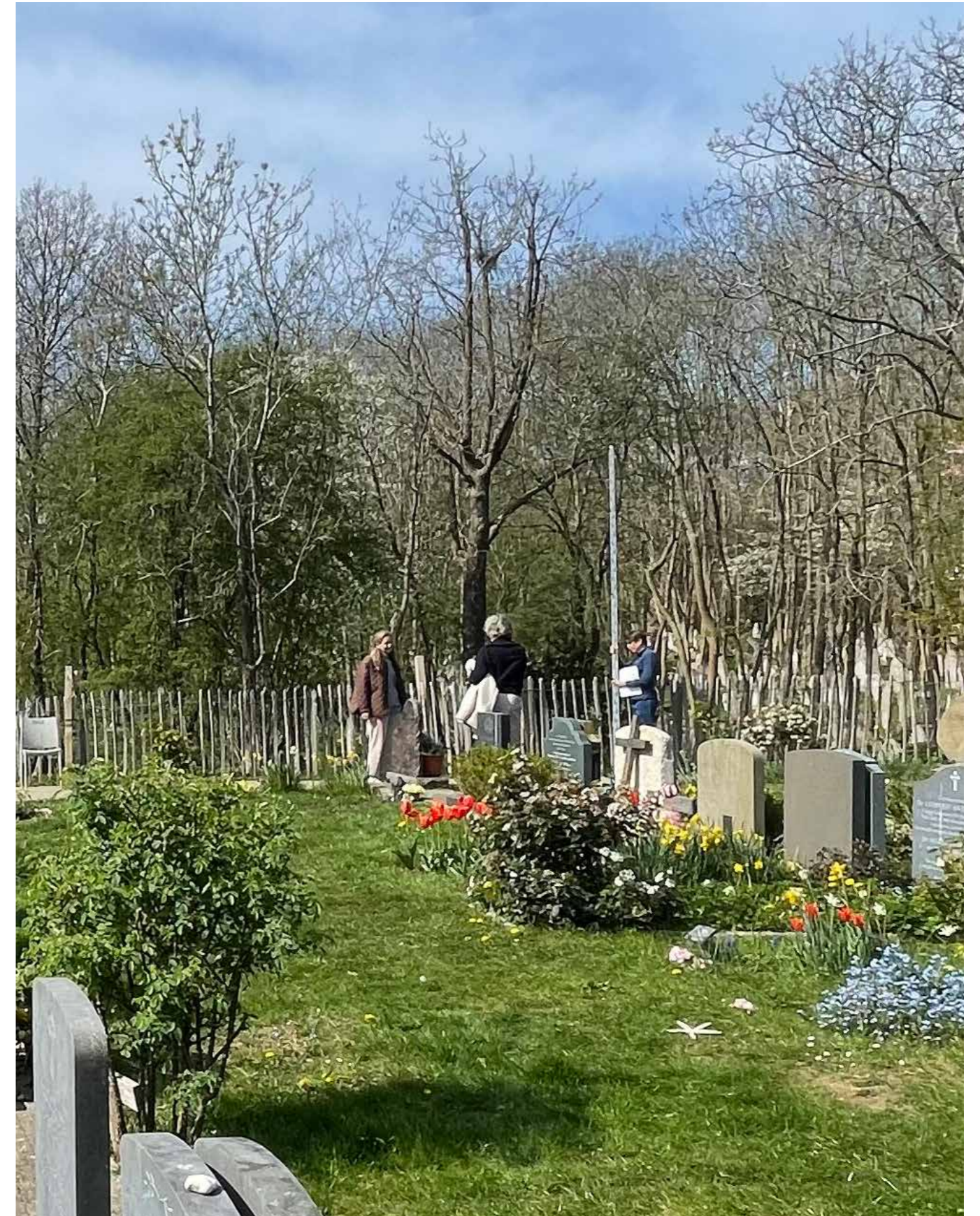
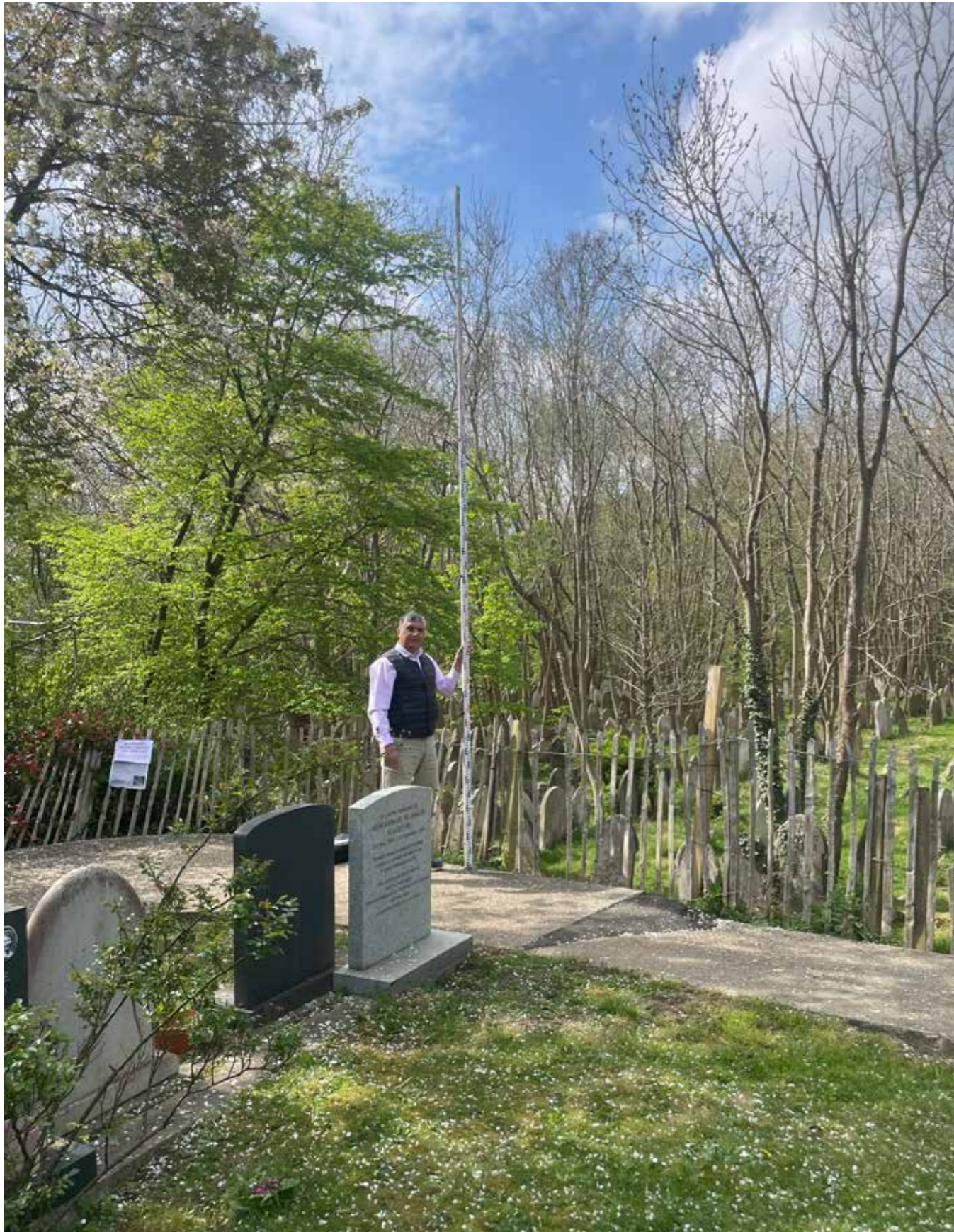


Gardeners' Building

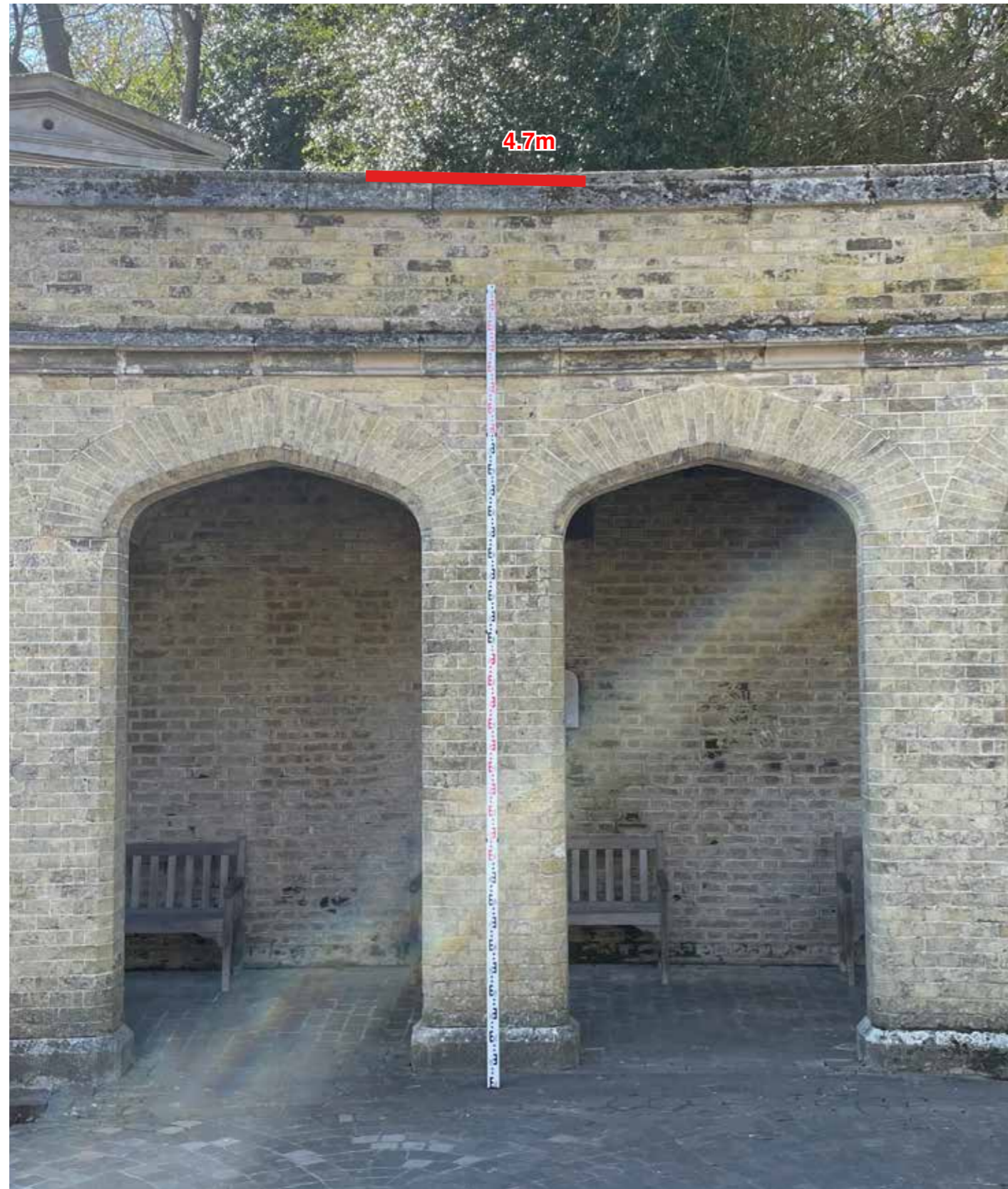
GARDEN BUILDING AS SEEN FROM THE MAIN PATH



GARDEN BUILDING AS SEEN FROM THE MOUND



HEIGHT OF THE TOP SECTION OF THE GARDEN BUILDING
AT IT'S TALLEST POINT FROM THE MOUND LEVEL
COMPARED WITH THE COLONADE HEIGHT



HEIGHT OF THE TOP SECTION OF THE GARDEN BUILDING
AT IT'S LOWEST POINT FROM THE MOUND LEVEL
COMPARED WITH THE COLONADE HEIGHT

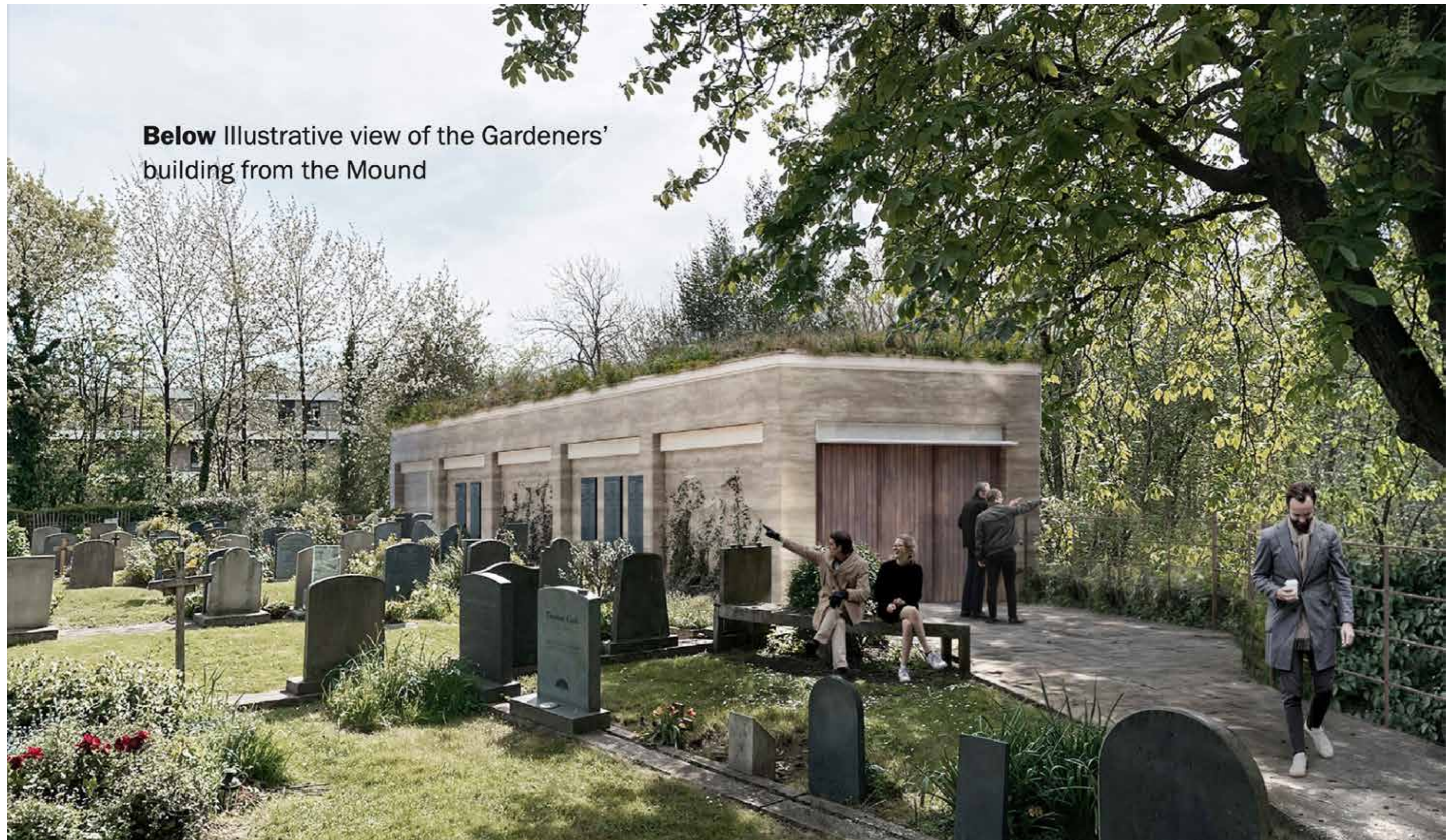


PROPOSED PLAN

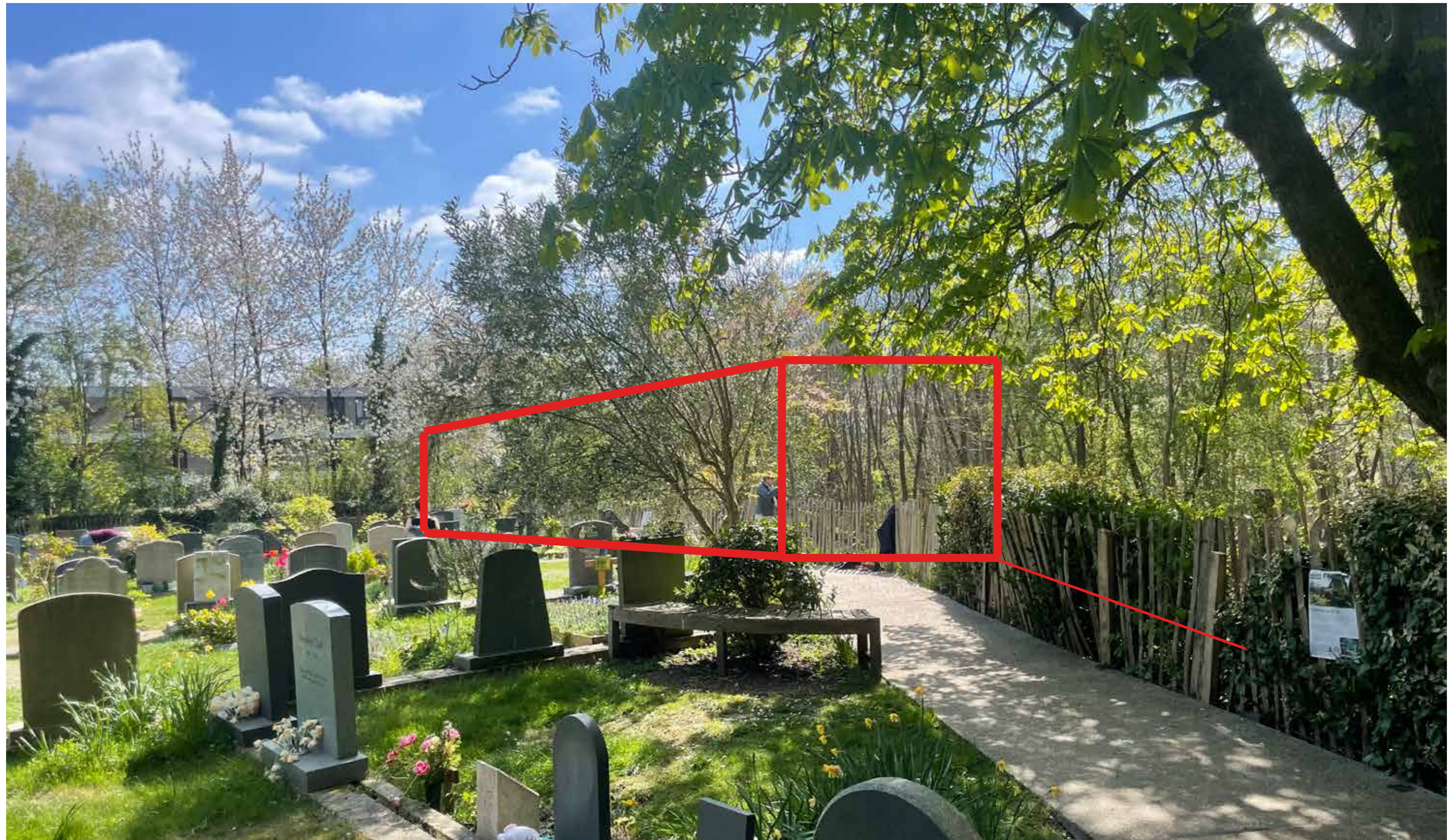
SCALE OF GARDEN BUILDING COMPARED WITH THE COLONADE. DOTTED LINE IN HIGH OF FIRST FLOOR AS SEEN FROM THE MOUND SIDE



PUBLISHED PHOTOMONTAGE IS MORE OF AN IMPRESSION. POSITIONING OF BUILDING NOT ACCURATE AND GIANT PEOPLE GIVE A FALSE IMPRESSION OF THE SCALE OF THE BUILDING



OUTLINE OF BUILDING AS SEEN FROM THE END OF THE PATH ON THE MOUND WITH PERSON AT THE RIGHT SCALE



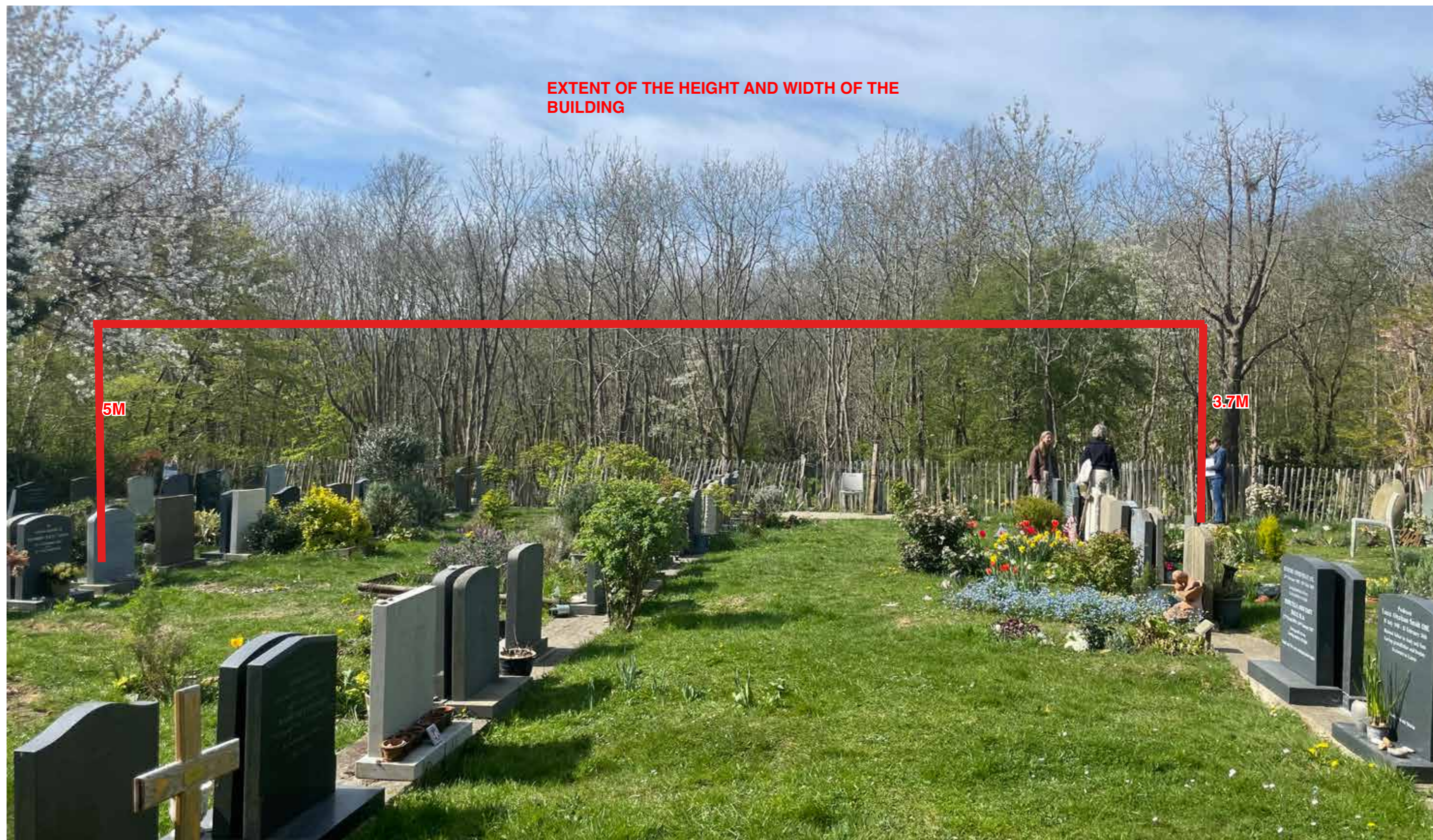
PUBLISHED PHOTOMONTAGE IS MORE OF AN IMPRESSION THAN AN ACCURATE REPRESENTATION OF THE SCALE OF THE PROPOSED GARDEN BUILDING



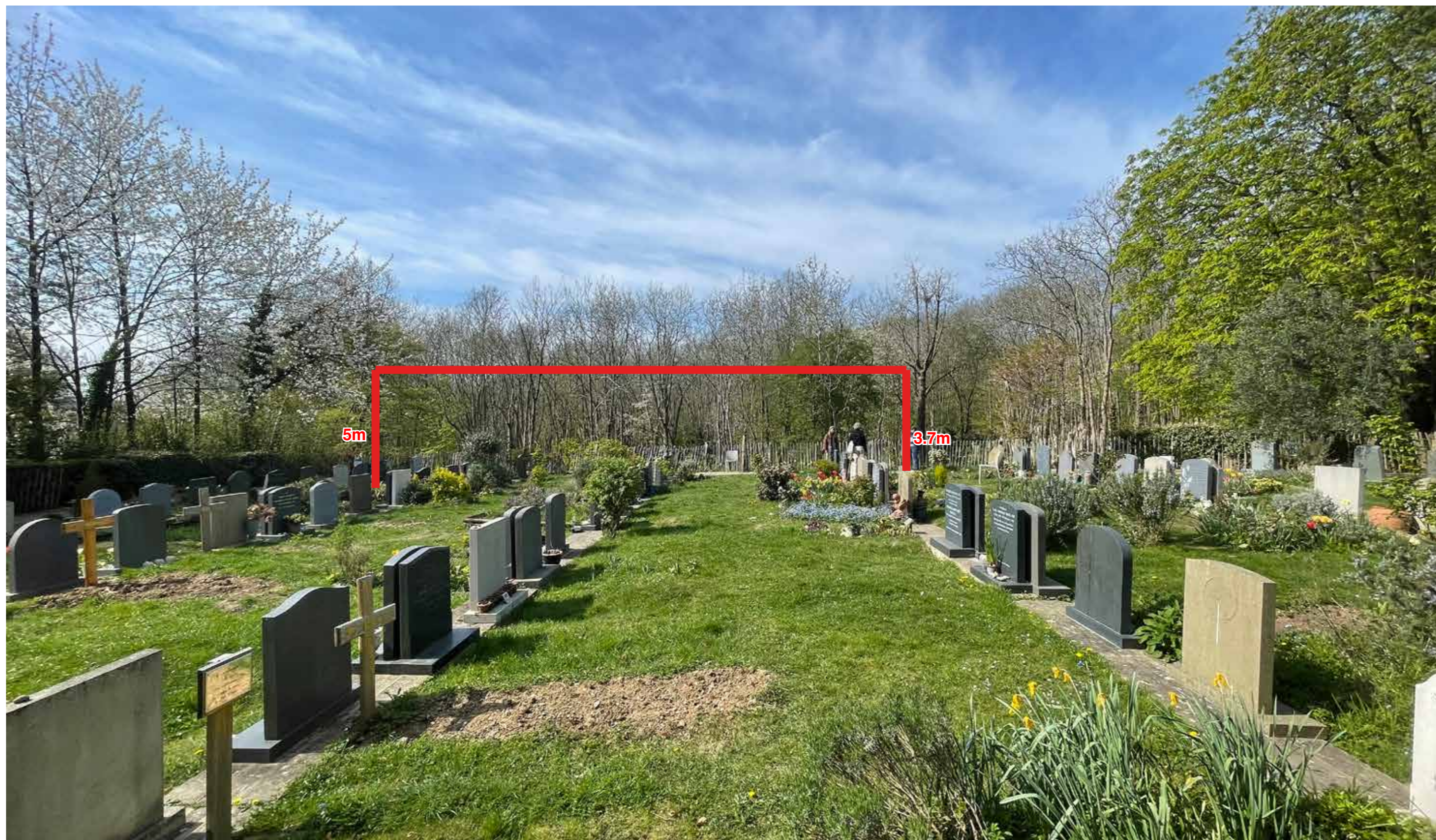
OUTLINE OF BUILDING AS SEEN FROM NEAR THE RAMP ACCESS TO THE MOUND



PROPOSED GARDENERS BUILDING OUTLINE FROM THE MOUND



PROPOSED GARDENERS BUILDING OUTLINE FROM THE MOUND (UNREALISTIC EXTRA WIDE ANGLE)



GARDEN BUILDING AS SEEN FROM THE CEMETERY BLOCKING ANY SENSE OF OPENNESS



GARDEN BUILDING AS SEEN FROM THE PATH. SHEER 7.8M HIGH FACADE WITH NO SET BACK.

