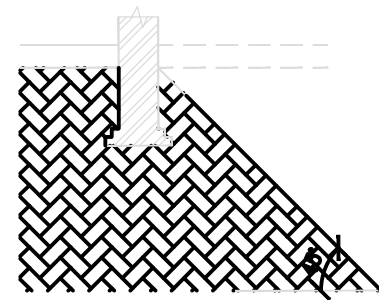
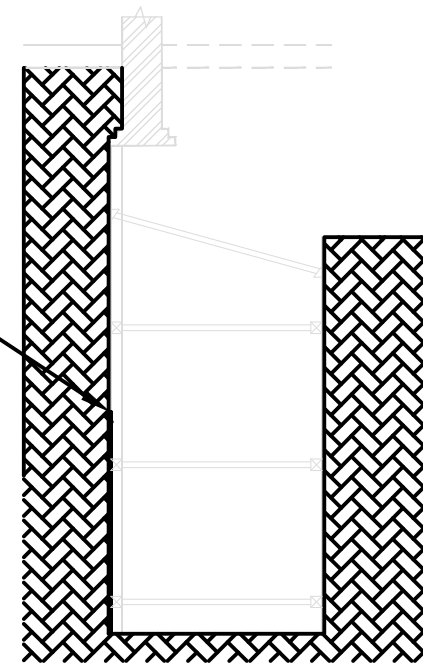


STAGE 1 - EXISTING

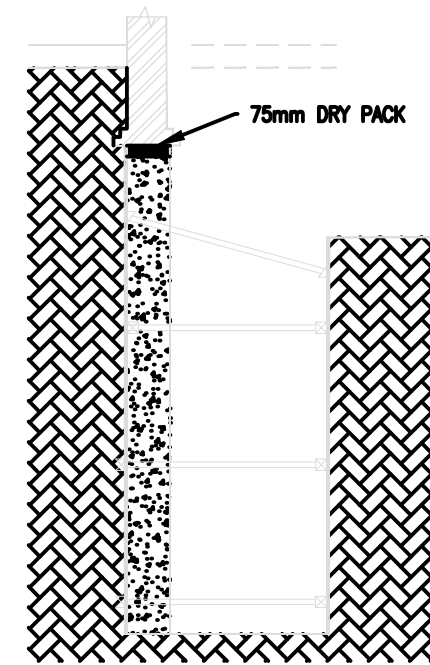


STAGE 2

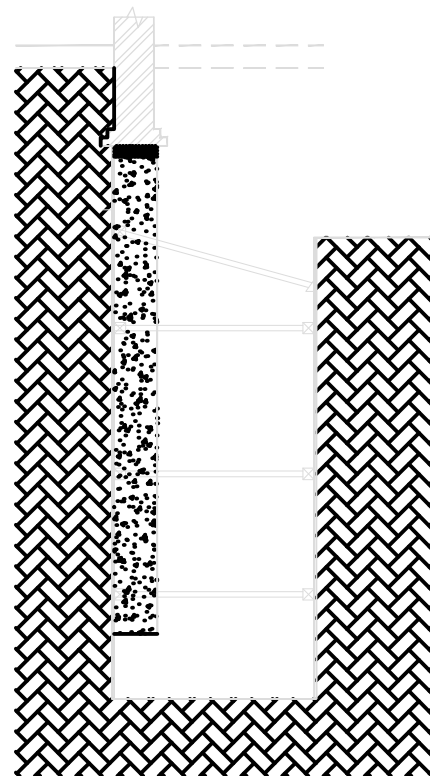
20mm CEMENT BOARD



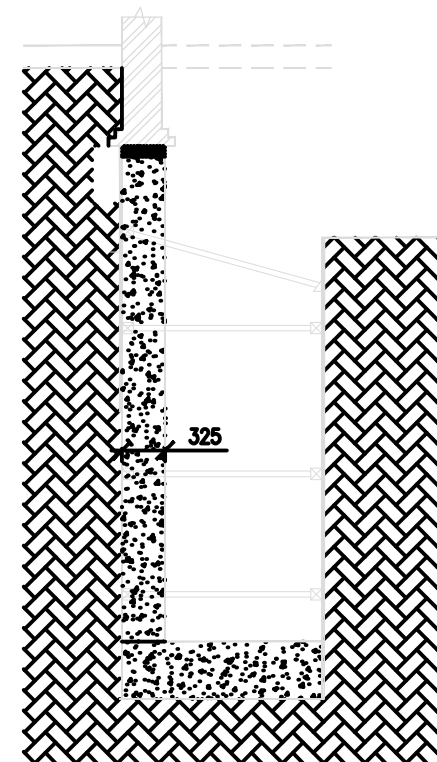
STAGE 3 - EXCAVATE FOR PIN



STAGE 4 - CONCRETE PIN



STAGE 4 - EXCAVATE FOR BASE OF PIN



STAGE 5 - CONCRETE BASE OF PIN

#### METHOD STATEMENT FOR BASEMENT CONSTRUCTION:

1. Excavate for underpinning (see sequence on drawing 810), stages 1-3.
2. Install concrete underpinning (stage 4).
3. Install part of base slab (stage 5). Leaving center of basement unexcavated.
4. Install new ground floor beams to prop base of existing party walls (stage 6).
5. Reduce level of center section of basement and install temporary propping as per stage 7.
6. Complete excavation of centre section of basement (stage 8).
7. Install center section of basement floor slab (stage 8).
8. Remove temporary propping (stage 9).