

## **Fire Doors Report**

### **Element Passive Fire Protection Ltd**

South Hampstead High School (GDST)

South Hampstead High School - All Floors

South Hampstead High School - All Floors

EL1171 - South Hampstead High School - All Floors



**Pin Number:** 0001:28  
**Company:** Element Passive Fire Protection Ltd  
  
**Created By:** Costel Arsene - 28  
**Template:** Door Maintenance

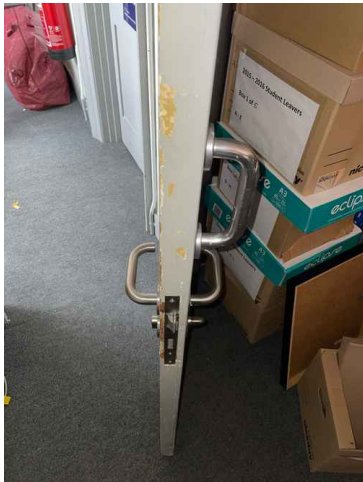
**Date Added:** 29/10/2024 - 09:43  
**Location:** South Hampstead High School / South Hampstead High School - All Floors / South Hampstead High School - All Floors / EL1171 - South Hampstead High School - All Floors  
**Status:** Action required

<b>Door Label</b>	
<b>Floor /Level:</b>	3
<b>Door Reference:</b>	0501 records
<b>Current FR:</b>	30
<b>Required FR:</b>	30
<b>Has the fire door got a third party fire door scheme label or plug fitted?:</b>	No
<b>Can you confirm that the door is in fact a fire door and has been proven as such?:</b>	Nominal fd30
<b>Door type</b>	
<b>Door set type:</b>	Single Leaf - Single Action
<b>Door Aesthetics :</b>	Painted
<b>Architrave type:</b>	Bullnose
<b>Door leaf handing:</b>	Right-handed
<b>Door set condition</b>	
<b>Is the door set free from damage?:</b>	No
<b>Door leaf or door set replacement?:</b>	Replacement door set
<b>Door Leaf</b>	
<b>Does the door leaf sit against the door stop and is it free from distortion?:</b>	N/A
<b>If the door is veneered or lipped, is the glue still holding these products firmly in place?:</b>	N/A
<b>Is the door leaf free from damage affecting its fire integrity?:</b>	N/A
<b>Does the door have the correct signage?:</b>	N/A
<b>Door Frame</b>	
<b>Is the door frame firmly attached to the wall?:</b>	N/A
<b>If a planted door stop is present, is it firmly attached?:</b>	N/A
<b>Are the frame to door leaf gaps in line with the manufacturers installation instructions/testing? :</b>	N/A
<b>Is the door frame free from damage affecting its fire integrity?:</b>	N/A
<b>Is there a consistent gap under the door that allows it to swing without touching floor covering?:</b>	N/A
<b>Is the door to floor covering gap in line with the manufacturer's installation instructions / testing?:</b>	N/A
<b>Intumescent/Smoke/Acoust Seals</b>	
<b>Are intumescent seals in place?:</b>	N/A
<b>Hinges</b>	
<b>Is there a minimum of three hinges with all of the screws fitted?:</b>	N/A
<b>Are all the ironmongery screws secure and the correct size?:</b>	N/A
<b>Are the hinges free of metal fragment and oil leakage, which show signs of wear?:</b>	N/A
<b>Are intumescent packers installed behind hinge?:</b>	N/A
<b>Is all the ironmongery marked with CE stamp or BSEN 1935 grade 13 (or international equivalent)?:</b>	N/A
<b>Is all ironmongery free from damage and operating correctly?:</b>	N/A
<b>Door Closers</b>	
<b>Does the door have a closer?:</b>	N/A
<b>Hold Open Devices</b>	

Does the door have an electronically powered hold open device?:	N/A
Lock And Latch	
Does the door have a lock and/or latch? :	N/A
Glazing And Glass	
Does the door leaf contain a vision panel(s)?:	N/A
Side And Overpanels	
Are there side and overpanels installed?:	N/A
Replacement door leaf/ Replacement door set	
Replacement door set (structural opening) width:	810
Replacement door set (structural opening) height:	2005
Replacement door set (structural opening) wall depth:	150
Architrave width:	70
Summary	
Summary / Recommendations:	
Due to excessive damage on door leaf all door set need to be replaced inclusive of following:	
3x grade 13 hinges	
2x FDKS fixed signage	
1x overhead closer	
15mm intumescent brush strips	
Full lock and latch including handles	
Thumb turn euro cylinder	
Priority	
Priority:	2



Photo(s)  
Photo 1 of 4



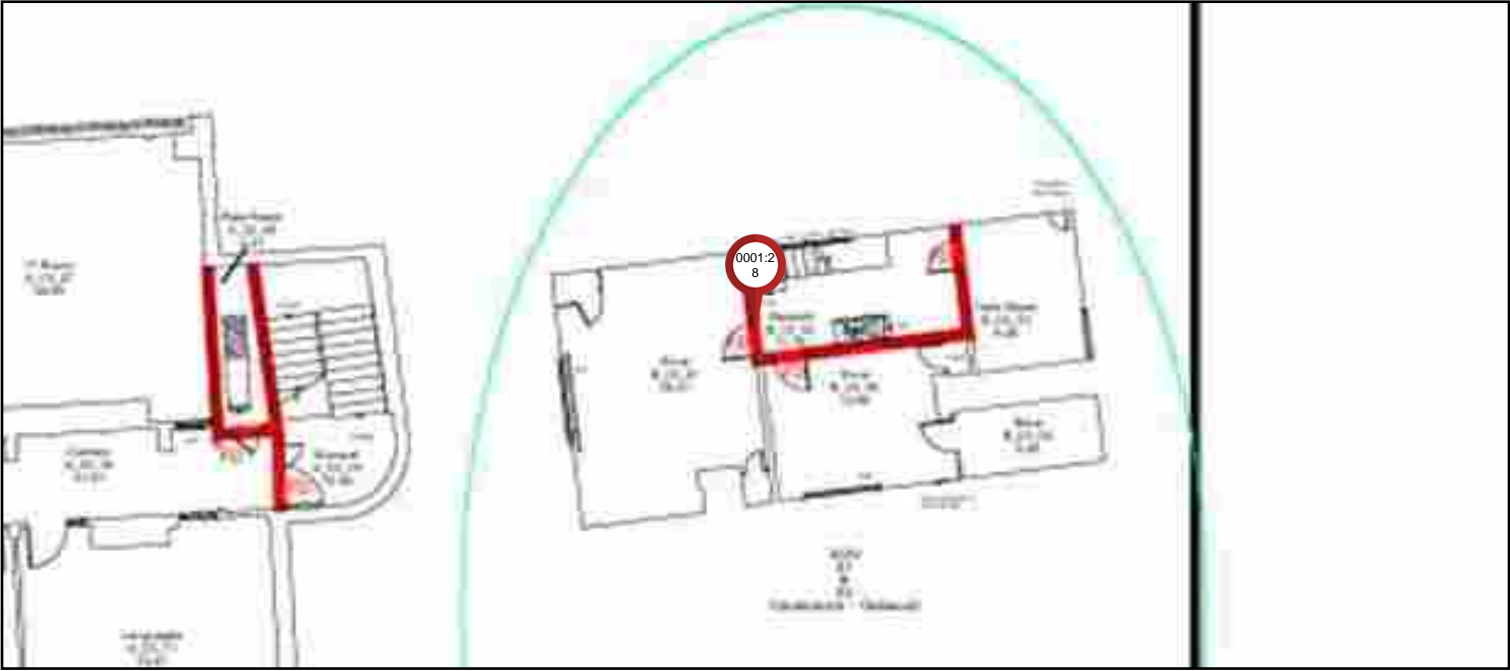
Photo(s)  
Photo 2 of 4



Photo(s)  
Photo 3 of 4



Photo(s)  
Photo 4 of 4



**Pin Number:** 0002:28  
**Company:** Element Passive Fire Protection Ltd  
  
**Created By:** Costel Arsene - 28  
**Template:** Door Maintenance

**Date Added:** 29/10/2024 - 09:48  
**Location:** South Hampstead High School / South Hampstead High School - All Floors / South Hampstead High School - All Floors / EL1171 - South Hampstead High School - All Floors  
**Status:** Action required

<b>Door Label</b>	
<b>Floor /Level:</b>	3
<b>Door Reference:</b>	ICT store 0502
<b>Current FR:</b>	30
<b>Required FR:</b>	30
<b>Has the fire door got a third party fire door scheme label or plug fitted?:</b>	No
<b>Can you confirm that the door is in fact a fire door and has been proven as such?:</b>	Nominal fd30
<b>Door type</b>	
<b>Door set type:</b>	Single Leaf - Single Action
<b>Door Aesthetics :</b>	Painted
<b>Architrave type:</b>	Bullnose
<b>Door leaf handing:</b>	Right-handed
<b>Door set condition</b>	
<b>Is the door set free from damage?:</b>	Yes
<b>Maintenance or no action?:</b>	Maintenance
<b>Door Leaf</b>	
<b>Does the door leaf sit against the door stop and is it free from distortion?:</b>	N/A
<b>If the door is veneered or lipped, is the glue still holding these products firmly in place?:</b>	Yes
<b>Is the door leaf free from damage affecting its fire integrity?:</b>	Yes
<b>Does the door have the correct signage?:</b>	No
<b>Door Frame</b>	
<b>Is the door frame firmly attached to the wall?:</b>	Yes
<b>If a planted door stop is present, is it firmly attached?:</b>	Yes
<b>Are the frame to door leaf gaps in line with the manufacturers installation instructions/testing? :</b>	Yes
<b>Is the door frame free from damage affecting its fire integrity?:</b>	Yes
<b>Is there a consistent gap under the door that allows it to swing without touching floor covering?:</b>	Yes
<b>Is the door to floor covering gap in line with the manufacturer's installation instructions / testing?:</b>	No
<b>Intumescent/Smoke/Acoust Seals</b>	
<b>Are intumescent seals in place?:</b>	No
<b>Hinges</b>	
<b>Is there a minimum of three hinges with all of the screws fitted?:</b>	No
<b>Are all the ironmongery screws secure and the correct size?:</b>	No
<b>Are the hinges free of metal fragment and oil leakage, which show signs of wear?:</b>	Yes
<b>Are intumescent packers installed behind hinge?:</b>	Unable to Verify
<b>Is all the ironmongery marked with CE stamp or BSEN 1935 grade 13 (or international equivalent)?:</b>	No
<b>Is all ironmongery free from damage and operating correctly?:</b>	No
<b>Door Closers</b>	
<b>Does the door have a closer?:</b>	Yes
<b>Open the door to 5 degrees or 75mm. Does it close and engage with the latch?:</b>	No

Is the closer correctly attached to the door and frame?:	Yes
Is the closer free from damage and not leaking?:	Yes
If unlatched, does the closer hold the door in line with the frame and intumescent seal?:	Yes
If hung in pairs, do they close in line if both opened and released together? (optional):	N/A
Does the door close within the specified time required?:	No
<b>Hold Open Devices</b>	
Does the door have an electronically powered hold open device?:	No
<b>Lock And Latch</b>	
Does the door have a lock and/or latch? :	Yes
Does the latch hold the door firmly in place without rattling?:	Yes
<b>Glazing And Glass</b>	
Does the door leaf contain a vision panel(s)?:	No
<b>Side And Overpanels</b>	
Are there side and overpanels installed?:	No
<b>Maintenance Remedial Works Required</b>	
Door gaps:	Ease and Adjustment
Door seals:	15mm intumescent/brush seals
Ironmongery:	3x Grade 13 hinges, Closer replacement/installation
Other:	FDKS
<b>Summary</b>	
<b>Summary / Recommendations:</b>	
Ease and adjustment	
Rebate and install 15mm intumescent brush strips	
3x grade 13 hinges	
1x FDKS fixed signage ( only 1 in place at the moment)	
1x overhead closer	
<b>Priority</b>	
Priority:	2



Photo(s)  
Photo 1 of 4



Photo(s)  
Photo 2 of 4

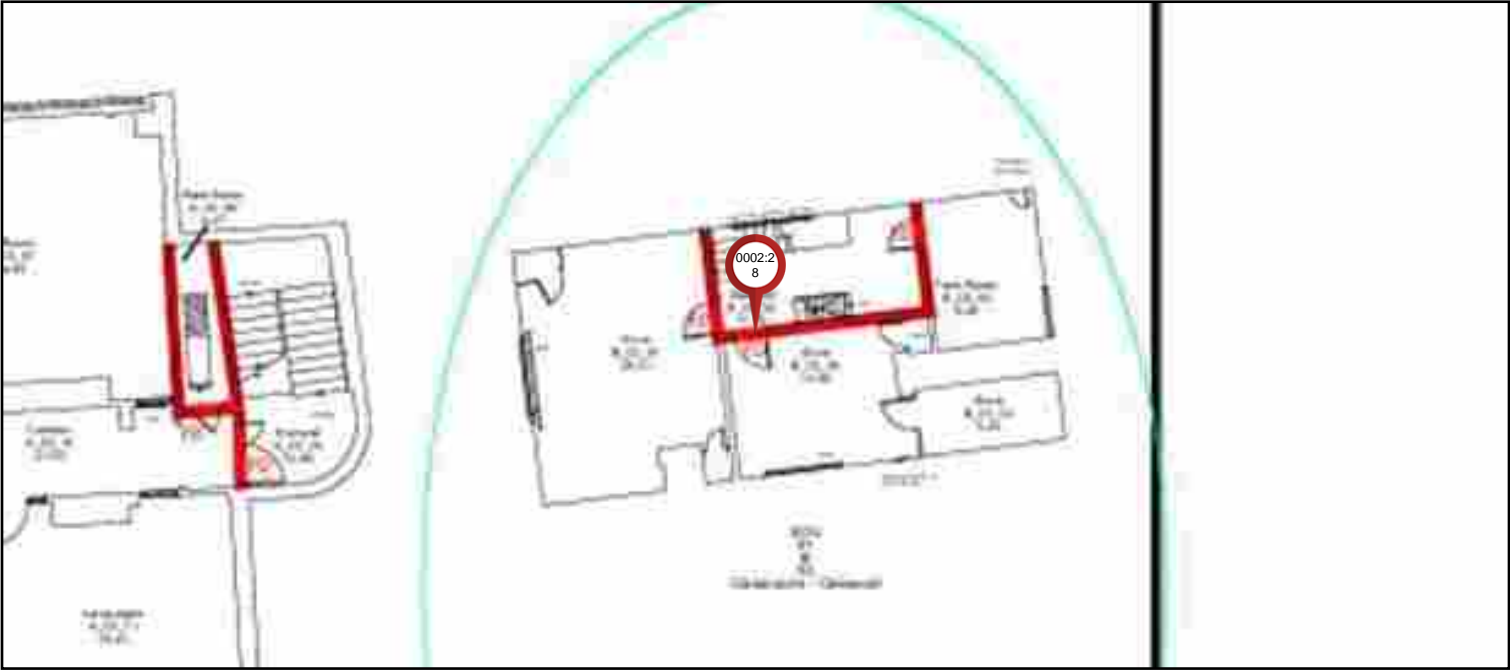


Photo(s)  
Photo 3 of 4



Photo(s)  
Photo 4 of 4







**Pin Number:** 0003:28

**Company:** Element Passive Fire Protection Ltd

**Created By:** Costel Arsene - 28

**Template:** Door Maintenance

**Date Added:** 29/10/2024 - 09:51

**Location:** South Hampstead High School / South Hampstead High School - All Floors / South Hampstead High School - All Floors / EL1171 - South Hampstead High School - All Floors

**Status:** Action required

Door Label	
Floor /Level:	3
Door Reference:	Tank room
Current FR:	60s
Required FR:	60s
Has the fire door got a third party fire door scheme label or plug fitted?:	No
Door type	
Door set type:	Single Leaf - Single Action
Door Aesthetics :	Painted
Architrave type:	Bullnose
Door leaf handing:	Right-handed
Door set condition	
Is the door set free from damage?:	Yes
Maintenance or no action?:	Maintenance
Door Leaf	
Does the door leaf sit against the door stop and is it free from distortion?:	Yes
If the door is veneered or lipped, is the glue still holding these products firmly in place?:	Yes
Is the door leaf free from damage affecting its fire integrity?:	Yes
Does the door have the correct signage?:	No
Door Frame	
Is the door frame firmly attached to the wall?:	Yes
If a planted door stop is present, is it firmly attached?:	Yes
Are the frame to door leaf gaps in line with the manufacturers installation instructions/testing? :	Yes
Is the door frame free from damage affecting its fire integrity?:	Yes
Is there a consistent gap under the door that allows it to swing without touching floor covering?:	Yes
Is the door to floor covering gap in line with the manufacturer's installation instructions / testing?:	Yes
Intumescent/Smoke/Acoust Seals	
Are intumescent seals in place?:	Yes
Are the seals free from damage?:	No
Are the smoke seals free from paint or varnish?:	No
Are the seals well attached inside the groove in the frame or door leaf?:	Yes
Are the seals continuous around the frame or door leaf?:	Yes
Is the smoke seal in full contact with the door giving an effective seal?:	No
Hinges	
Is there a minimum of three hinges with all of the screws fitted?:	No
Are all the ironmongery screws secure and the correct size?:	Yes
Are the hinges free of metal fragment and oil leakage, which show signs of wear?:	Yes
Are intumescent packers installed behind hinge?:	Unable to Verify
Is all the ironmongery marked with CE stamp or BSEN 1935 grade 13 (or international equivalent)?:	Yes

Is all ironmongery free from damage and operating correctly?:	Yes
<b>Door Closers</b>	
Does the door have a closer?:	No
<b>Hold Open Devices</b>	
Does the door have an electronically powered hold open device?:	No
<b>Lock And Latch</b>	
Does the door have a lock and/or latch? :	Yes
Does the latch hold the door firmly in place without rattling?:	Yes
<b>Glazing And Glass</b>	
Does the door leaf contain a vision panel(s)?:	No
<b>Side And Overpanels</b>	
Are there side and overpanels installed?:	No
<b>Maintenance Remedial Works Required</b>	
Door seals:	15mm intumescent/brush seals, 15mm intumescent seals
Ironmongery:	3x Grade 13 hinges
Other:	FDKL
<b>Summary</b>	
<b>Summary / Recomendations:</b>	
3x grade 13 hinges	
15mm intumescent brush strips	
15mm intumescent seals	
1x FDKL fixed signage	
<b>Priority</b>	
Priority:	1



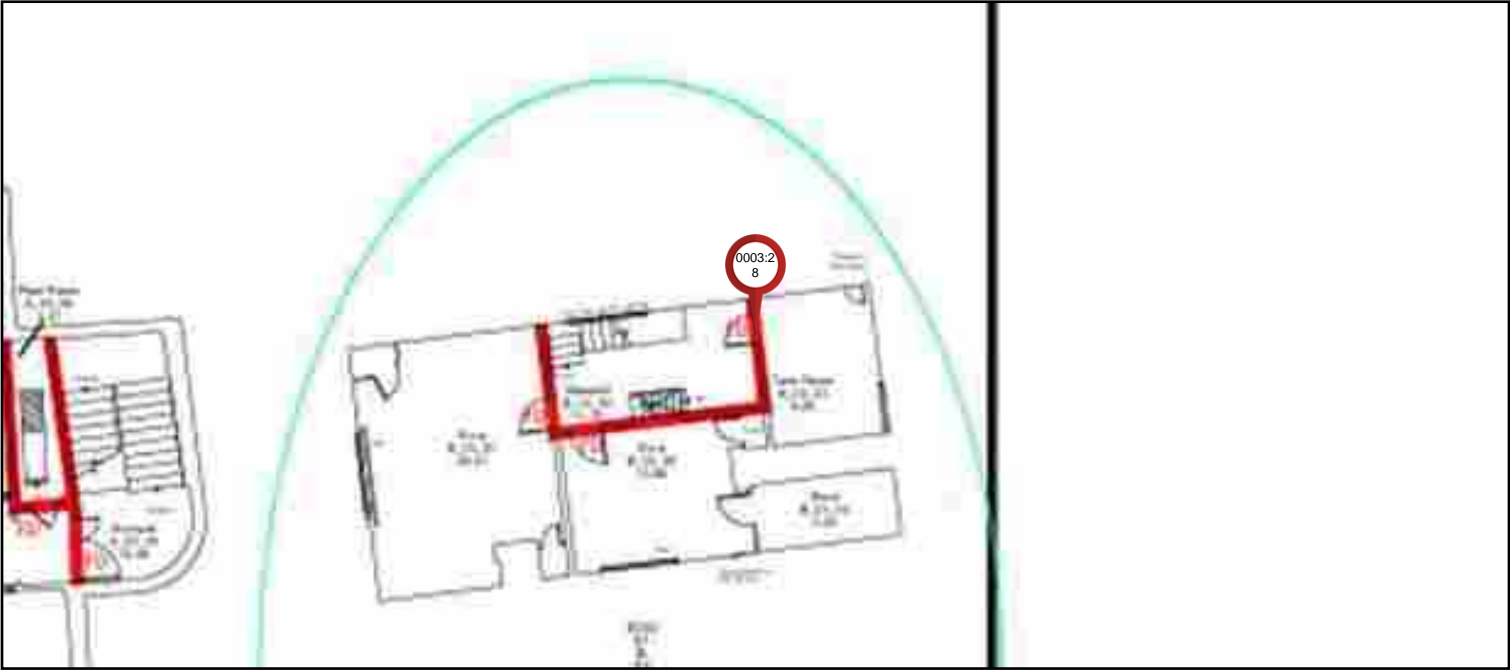
Photo(s)  
Photo 1 of 3



Photo(s)  
Photo 2 of 3



Photo(s)  
Photo 3 of 3



**Pin Number:** 0004:28

**Company:** Element Passive Fire Protection Ltd

**Created By:** Costel Arsene - 28

**Template:** Door Maintenance

**Date Added:** 29/10/2024 - 10:01

**Location:** South Hampstead High School / South Hampstead High School - All Floors / South Hampstead High School - All Floors / EL1171 - South Hampstead High School - All Floors

**Status:** Action required

<b>Door Label</b>	
<b>Floor /Level:</b>	4
<b>Door Reference:</b>	0401 director of philanthropy & alumnae
<b>Current FR:</b>	NR
<b>Required FR:</b>	30
<b>Has the fire door got a third party fire door scheme label or plug fitted?:</b>	No
<b>Can you confirm that the door is in fact a fire door and has been proven as such?:</b>	Non fire rated door set
<b>Door type</b>	
<b>Door set type:</b>	Single Leaf - Single Action
<b>Door Aesthetics :</b>	Painted
<b>Architrave type:</b>	Bullnose
<b>Door leaf handing:</b>	Left-handed
<b>Door set condition</b>	
<b>Is the door set free from damage?:</b>	No
<b>Door leaf or door set replacement?:</b>	Replacement door set
<b>Door Leaf</b>	
<b>Does the door leaf sit against the door stop and is it free from distortion?:</b>	N/A
<b>If the door is veneered or lipped, is the glue still holding these products firmly in place?:</b>	N/A
<b>Is the door leaf free from damage affecting its fire integrity?:</b>	N/A
<b>Does the door have the correct signage?:</b>	N/A
<b>Door Frame</b>	
<b>Is the door frame firmly attached to the wall?:</b>	N/A
<b>If a planted door stop is present, is it firmly attached?:</b>	N/A
<b>Are the frame to door leaf gaps in line with the manufacturers installation instructions/testing? :</b>	N/A
<b>Is the door frame free from damage affecting its fire integrity?:</b>	N/A
<b>Is there a consistent gap under the door that allows it to swing without touching floor covering?:</b>	N/A
<b>Is the door to floor covering gap in line with the manufacturer's installation instructions / testing?:</b>	N/A
<b>Intumescent/Smoke/Acoust Seals</b>	
<b>Are intumescent seals in place?:</b>	N/A
<b>Hinges</b>	
<b>Is there a minimum of three hinges with all of the screws fitted?:</b>	N/A
<b>Are all the ironmongery screws secure and the correct size?:</b>	N/A
<b>Are the hinges free of metal fragment and oil leakage, which show signs of wear?:</b>	N/A
<b>Are intumescent packers installed behind hinge?:</b>	N/A
<b>Is all the ironmongery marked with CE stamp or BSEN 1935 grade 13 (or international equivalent)?:</b>	N/A
<b>Is all ironmongery free from damage and operating correctly?:</b>	N/A
<b>Door Closers</b>	
<b>Does the door have a closer?:</b>	N/A
<b>Hold Open Devices</b>	

Does the door have an electronically powered hold open device?:	N/A
Lock And Latch	
Does the door have a lock and/or latch? :	N/A
Glazing And Glass	
Does the door leaf contain a vision panel(s)?:	N/A
Side And Overpanels	
Are there side and overpanels installed?:	N/A
Replacement door leaf/ Replacement door set	
Replacement door set (structural opening) width:	810
Replacement door set (structural opening) height:	2085
Replacement door set (structural opening) wall depth:	150
Architrave width:	120
Summary	
Summary / Recomendations:	
No fire rated on existing door set , recommended to replace all door set with a timber fd30 door set inclusive of following:	
3x grade 13 hinges	
15mm intumescent brush strips	
1x overhead closer	
2x FDKS fixed signage	
Full lock and latch	
2x vp ( 170x510mm )	
Digi lock	
Priority	
Priority:	2



Photo(s)  
Photo 1 of 4



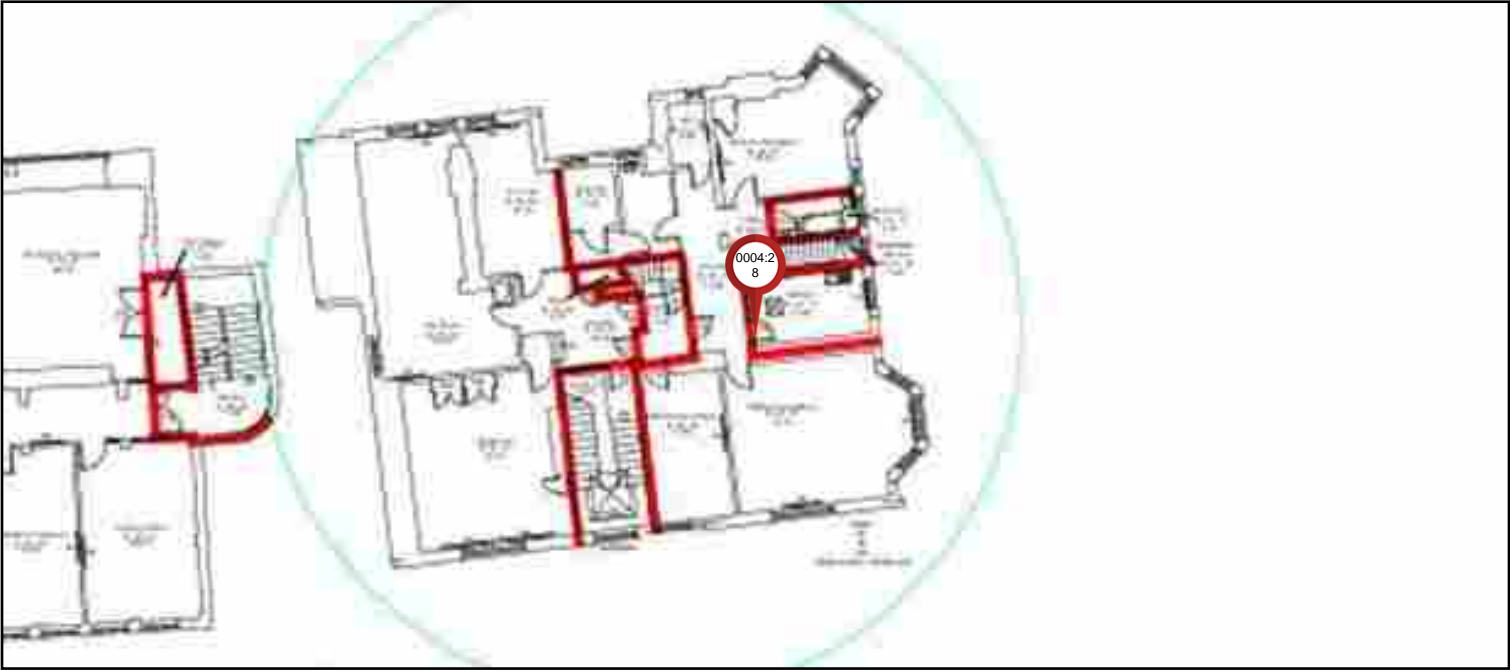
Photo(s)  
Photo 2 of 4



Photo(s)  
Photo 3 of 4



Photo(s)  
Photo 4 of 4



**Pin Number:** 0005:28

**Company:** Element Passive Fire Protection Ltd

**Created By:** Costel Arsene - 28

**Template:** Door Maintenance

**Date Added:** 29/10/2024 - 10:09

**Location:** South Hampstead High School / South Hampstead High School - All Floors / South Hampstead High School - All Floors / EL1171 - South Hampstead High School - All Floors

**Status:** Action required

Door Label	
Floor /Level:	4
Door Reference:	Staircase
Current FR:	60s
Required FR:	60s
Has the fire door got a third party fire door scheme label or plug fitted?:	No
Can you confirm that the door is in fact a fire door and has been proven as such?:	Nominal fd60s
Door type	
Door set type:	Single Leaf - Single Action
Door Aesthetics :	Painted
Architrave type:	Bullnose
Door leaf handing:	Right-handed
Door set condition	
Is the door set free from damage?:	Yes
Maintenance or no action?:	Maintenance
Door Leaf	
Does the door leaf sit against the door stop and is it free from distortion?:	Yes
If the door is veneered or lipped, is the glue still holding these products firmly in place?:	Yes
Is the door leaf free from damage affecting its fire integrity?:	Yes
Does the door have the correct signage?:	No
Door Frame	
Is the door frame firmly attached to the wall?:	Yes
If a planted door stop is present, is it firmly attached?:	Yes
Are the frame to door leaf gaps in line with the manufacturers installation instructions/testing? :	Yes
Meeting Edge Gap:	5
Leading Edge Gap:	3
Top Edge Gap:	5
Is the door frame free from damage affecting its fire integrity?:	Yes
Is there a consistent gap under the door that allows it to swing without touching floor covering?:	Yes
Is the door to floor covering gap in line with the manufacturer's installation instructions / testing?:	No
Threshold Gap:	18
Intumescent/Smoke/Acoust Seals	
Are intumescent seals in place?:	Yes
Are the seals free from damage?:	No
Are the smoke seals free from paint or varnish?:	No
Are the seals well attached inside the groove in the frame or door leaf?:	Yes
Are the seals continuous around the frame or door leaf?:	Yes
Is the smoke seal in full contact with the door giving an effective seal?:	No
Hinges	



Is there a minimum of three hinges with all of the screws fitted?:	Yes
Are all the ironmongery screws secure and the correct size?:	Yes
Are the hinges free of metal fragment and oil leakage, which show signs of wear?:	No
Are intumescent packers installed behind hinge?:	Unable to Verify
Is all the ironmongery marked with CE stamp or BSEN 1935 grade 13 (or international equivalent)?:	Yes
Is all ironmongery free from damage and operating correctly?:	No
<b>Door Closers</b>	
Does the door have a closer?:	Yes
Open the door to 5 degrees or 75mm. Does it close and engage with the latch?:	Yes
Is the closer correctly attached to the door and frame?:	No
Is the closer free from damage and not leaking?:	Yes
If unlatched, does the closer hold the door in line with the frame and intumescent seal?:	Yes
If hung in pairs, do they close in line if both opened and released together? (optional):	N/A
Does the door close within the specified time required?:	Yes
<b>Hold Open Devices</b>	
Does the door have an electronically powered hold open device?:	No
<b>Lock And Latch</b>	
Does the door have a lock and/or latch? :	Yes
Does the latch hold the door firmly in place without rattling?:	Yes
<b>Glazing And Glass</b>	
Does the door leaf contain a vision panel(s)?:	Yes
Is the intumescent seal continuous and attached to the glass and bead?:	Yes
Are the glazing beads correctly attached to the frame from both sides and free from damage?:	Yes
Is the glass free from damage and cracking?:	Yes
Is the glass identified as fire rated?:	Yes
If glazing panels are below 1500mm from bottom of door, is the glass safety glass?:	N/A
<b>Side And Overpanels</b>	
Are there side and overpanels installed?:	No
<b>Maintenance Remedial Works Required</b>	
Door gaps:	Ease and Adjustment, Install face-mounted drop-down seal, Install Lipping (BE)
Door seals:	15mm intumescent/brush seals, 15mm intumescent seals
Ironmongery:	3x Grade 13 hinges, Closer Adjustment
Other:	FDKS
<b>Summary</b>	
<b>Summary / Recomendations:</b>	
Ease and adjustment	
15mm intumescent brush strips	
15mm intumescent seals	
Closer adjustment	
3x grade 13 hinges	
1x FDKS fixed signage ( only 1 in place at the moment )	
BE lipping, BE gap 18mm	
Face mounted drop down seal ( leaf 830mm)	
<b>Priority</b>	

Priority:	2
-----------	---



Photo(s)  
Photo 1 of 4



Photo(s)  
Photo 2 of 4



Photo(s)  
Photo 3 of 4



Photo(s)  
Photo 4 of 4



**Pin Number:** 0006:28

**Company:** Element Passive Fire Protection Ltd

**Created By:** Costel Arsene - 28

**Template:** Door Maintenance

**Date Added:** 29/10/2024 - 10:14

**Location:** South Hampstead High School / South Hampstead High School - All Floors / South Hampstead High School - All Floors / EL1171 - South Hampstead High School - All Floors

**Status:** Action required

<b>Door Label</b>	
<b>Floor /Level:</b>	4
<b>Door Reference:</b>	Kitchen
<b>Current FR:</b>	30
<b>Required FR:</b>	30
<b>Has the fire door got a third party fire door scheme label or plug fitted?:</b>	No
<b>Can you confirm that the door is in fact a fire door and has been proven as such?:</b>	Nominal fd30
<b>Door type</b>	
<b>Door set type:</b>	Single Leaf - Single Action
<b>Door Aesthetics :</b>	Painted
<b>Architrave type:</b>	Bullnose
<b>Door leaf handing:</b>	Left-handed
<b>Door set condition</b>	
<b>Is the door set free from damage?:</b>	No
<b>Door leaf or door set replacement?:</b>	Replacement door set
<b>Door Leaf</b>	
<b>Does the door leaf sit against the door stop and is it free from distortion?:</b>	N/A
<b>If the door is veneered or lipped, is the glue still holding these products firmly in place?:</b>	N/A
<b>Is the door leaf free from damage affecting its fire integrity?:</b>	N/A
<b>Does the door have the correct signage?:</b>	N/A
<b>Door Frame</b>	
<b>Is the door frame firmly attached to the wall?:</b>	N/A
<b>If a planted door stop is present, is it firmly attached?:</b>	N/A
<b>Are the frame to door leaf gaps in line with the manufacturers installation instructions/testing? :</b>	N/A
<b>Is the door frame free from damage affecting its fire integrity?:</b>	N/A
<b>Is there a consistent gap under the door that allows it to swing without touching floor covering?:</b>	N/A
<b>Is the door to floor covering gap in line with the manufacturer's installation instructions / testing?:</b>	N/A
<b>Intumescent/Smoke/Acoust Seals</b>	
<b>Are intumescent seals in place?:</b>	N/A
<b>Hinges</b>	
<b>Is there a minimum of three hinges with all of the screws fitted?:</b>	N/A
<b>Are all the ironmongery screws secure and the correct size?:</b>	N/A
<b>Are the hinges free of metal fragment and oil leakage, which show signs of wear?:</b>	N/A
<b>Are intumescent packers installed behind hinge?:</b>	N/A
<b>Is all the ironmongery marked with CE stamp or BSEN 1935 grade 13 (or international equivalent)?:</b>	N/A
<b>Is all ironmongery free from damage and operating correctly?:</b>	N/A
<b>Door Closers</b>	
<b>Does the door have a closer?:</b>	N/A
<b>Hold Open Devices</b>	

Does the door have an electronically powered hold open device?:	N/A
Lock And Latch	
Does the door have a lock and/or latch? :	N/A
Glazing And Glass	
Does the door leaf contain a vision panel(s)?:	N/A
Side And Overpanels	
Are there side and overpanels installed?:	N/A
Replacement door leaf/ Replacement door set	
Replacement door set (structural opening) width:	875
Replacement door set (structural opening) height:	2065
Replacement door set (structural opening) wall depth:	150
Architrave width:	120
Summary	
Summary / Recommendations:	
Due to excessive damage on door leaf all door set need to be replaced inclusive of following:	
3x grade 13 hinges	
2x FDKS fixed signage	
1x overhead closer	
15mm intumescent brush strips	
Full lock and latch including handles	
Over glass panel (830x300mm)	
Priority	
Priority:	1



Photo(s)  
Photo 1 of 4



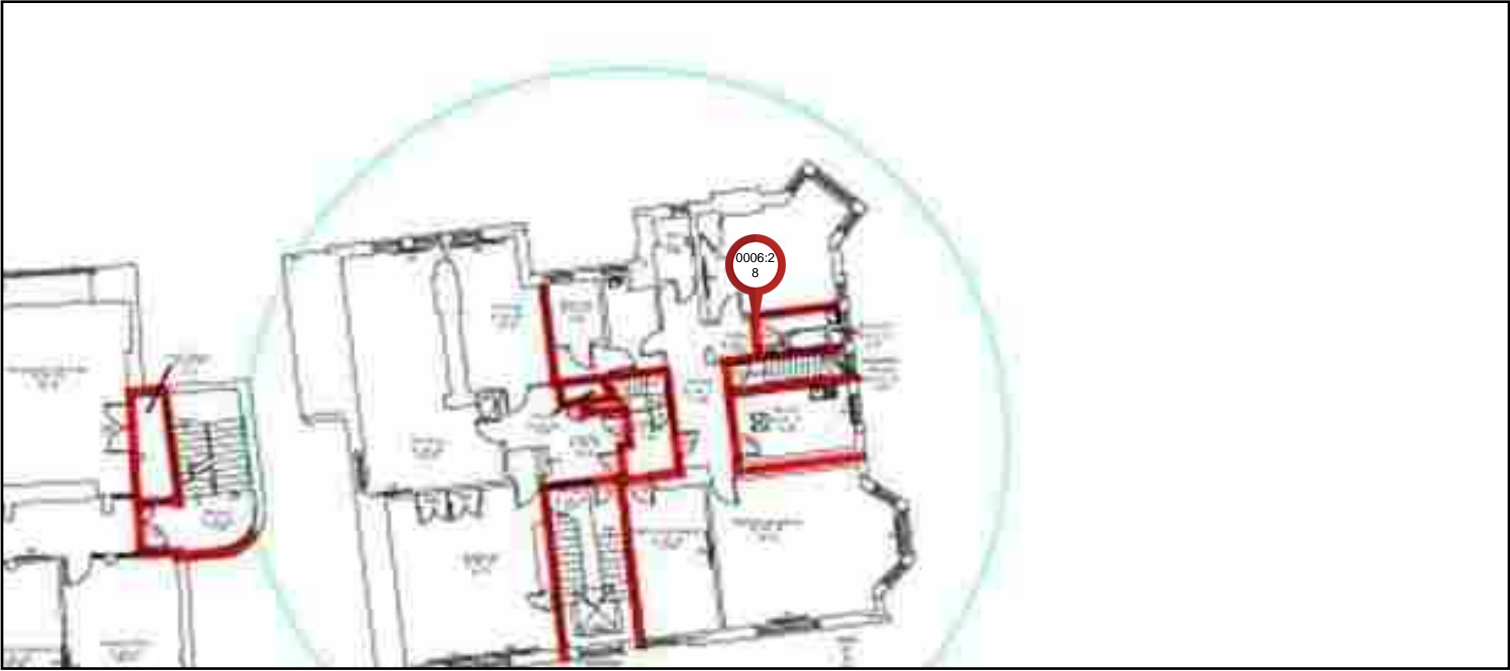
Photo(s)  
Photo 2 of 4



Photo(s)  
Photo 3 of 4



Photo(s)  
Photo 4 of 4



**Pin Number:** 0007:28

**Company:** Element Passive Fire Protection Ltd

**Created By:** Costel Arsene - 28

**Template:** Door Maintenance

**Date Added:** 29/10/2024 - 10:20

**Location:** South Hampstead High School / South Hampstead High School - All Floors / South Hampstead High School - All Floors / EL1171 - South Hampstead High School - All Floors

**Status:** Action required

Door Label	
Floor /Level:	4
Door Reference:	Corridor
Current FR:	60s
Required FR:	60s
Has the fire door got a third party fire door scheme label or plug fitted?:	No
Can you confirm that the door is in fact a fire door and has been proven as such?:	Nominal fd60s
Door type	
Door set type:	Single Leaf - Single Action
Door Aesthetics :	Painted
Architrave type:	Bullnose
Door leaf handing:	Right-handed
Door set condition	
Is the door set free from damage?:	Yes
Maintenance or no action?:	Maintenance
Door Leaf	
Does the door leaf sit against the door stop and is it free from distortion?:	Yes
If the door is veneered or lipped, is the glue still holding these products firmly in place?:	Yes
Is the door leaf free from damage affecting its fire integrity?:	Yes
Does the door have the correct signage?:	No
Door Frame	
Is the door frame firmly attached to the wall?:	Yes
If a planted door stop is present, is it firmly attached?:	Yes
Are the frame to door leaf gaps in line with the manufacturers installation instructions/testing? :	Yes
Meeting Edge Gap:	4
Leading Edge Gap:	2
Top Edge Gap:	5
Is the door frame free from damage affecting its fire integrity?:	No
Is there a consistent gap under the door that allows it to swing without touching floor covering?:	Yes
Is the door to floor covering gap in line with the manufacturer's installation instructions / testing?:	No
Threshold Gap:	7
Intumescent/Smoke/Acoust Seals	
Are intumescent seals in place?:	Yes
Are the seals free from damage?:	Yes
Are the smoke seals free from paint or varnish?:	No
Are the seals well attached inside the groove in the frame or door leaf?:	Yes
Are the seals continuous around the frame or door leaf?:	Yes
Is the smoke seal in full contact with the door giving an effective seal?:	No
Hinges	

Is there a minimum of three hinges with all of the screws fitted?:	Yes
Are all the ironmongery screws secure and the correct size?:	Yes
Are the hinges free of metal fragment and oil leakage, which show signs of wear?:	No
Are intumescent packers installed behind hinge?:	Unable to Verify
Is all the ironmongery marked with CE stamp or BSEN 1935 grade 13 (or international equivalent)?:	Yes
Is all ironmongery free from damage and operating correctly?:	No
<b>Door Closers</b>	
Does the door have a closer?:	Yes
Open the door to 5 degrees or 75mm. Does it close and engage with the latch?:	Yes
Is the closer correctly attached to the door and frame?:	Yes
Is the closer free from damage and not leaking?:	Yes
If unlatched, does the closer hold the door in line with the frame and intumescent seal?:	Yes
If hung in pairs, do they close in line if both opened and released together? (optional):	N/A
Does the door close within the specified time required?:	Yes
<b>Hold Open Devices</b>	
Does the door have an electronically powered hold open device?:	No
<b>Lock And Latch</b>	
Does the door have a lock and/or latch? :	Yes
Does the latch hold the door firmly in place without rattling?:	Yes
<b>Glazing And Glass</b>	
Does the door leaf contain a vision panel(s)?:	Yes
Is the intumescent seal continuous and attached to the glass and bead?:	Yes
Are the glazing beads correctly attached to the frame from both sides and free from damage?:	Yes
Is the glass free from damage and cracking?:	Yes
Is the glass identified as fire rated?:	Yes
If glazing panels are below 1500mm from bottom of door, is the glass safety glass?:	N/A
<b>Side And Overpanels</b>	
Are there side and overpanels installed?:	No
<b>Maintenance Remedial Works Required</b>	
Door gaps:	Ease and Adjustment, Install face-mounted drop-down seal
Door seals:	15mm intumescent/brush seals
Ironmongery:	3x Grade 13 hinges
Other:	FDKS
<b>Summary</b>	
<b>Summary / Recommendations:</b>	
Ease and adjustment	
3x grade 13 hinges	
2x FDKS fixed signage	
Face mounted drop down seal ( leaf 830mm)	
<b>Priority</b>	
Priority:	2





Photo(s)  
Photo 1 of 4



Photo(s)  
Photo 2 of 4



Photo(s)  
Photo 3 of 4



Photo(s)  
Photo 4 of 4



**Pin Number:** 0008:28

**Company:** Element Passive Fire Protection Ltd

**Created By:** Costel Arsene - 28

**Template:** Door Maintenance

**Date Added:** 29/10/2024 - 10:25

**Location:** South Hampstead High School / South Hampstead High School - All Floors / South Hampstead High School - All Floors / EL1171 - South Hampstead High School - All Floors

**Status:** Action required

<b>Door Label</b>	
<b>Floor /Level:</b>	4
<b>Door Reference:</b>	0412 finance office
<b>Current FR:</b>	60s
<b>Required FR:</b>	60s
<b>Has the fire door got a third party fire door scheme label or plug fitted?:</b>	No
<b>Can you confirm that the door is in fact a fire door and has been proven as such?:</b>	Nominal fd60s
<b>Door type</b>	
<b>Door set type:</b>	Single Leaf - Single Action
<b>Door Aesthetics :</b>	Painted
<b>Architrave type:</b>	Bullnose
<b>Door leaf handing:</b>	Right-handed
<b>Door set condition</b>	
<b>Is the door set free from damage?:</b>	Yes
<b>Maintenance or no action?:</b>	Maintenance
<b>Door Leaf</b>	
<b>Does the door leaf sit against the door stop and is it free from distortion?:</b>	Yes
<b>If the door is veneered or lipped, is the glue still holding these products firmly in place?:</b>	Yes
<b>Is the door leaf free from damage affecting its fire integrity?:</b>	Yes
<b>Does the door have the correct signage?:</b>	No
<b>Door Frame</b>	
<b>Is the door frame firmly attached to the wall?:</b>	Yes
<b>If a planted door stop is present, is it firmly attached?:</b>	Yes
<b>Are the frame to door leaf gaps in line with the manufacturers installation instructions/testing? :</b>	Yes
<b>Meeting Edge Gap:</b>	6
<b>Leading Edge Gap:</b>	2
<b>Top Edge Gap:</b>	5
<b>Is the door frame free from damage affecting its fire integrity?:</b>	Yes
<b>Is there a consistent gap under the door that allows it to swing without touching floor covering?:</b>	Yes
<b>Is the door to floor covering gap in line with the manufacturer's installation instructions / testing?:</b>	No
<b>Threshold Gap:</b>	10
<b>Intumescent/Smoke/Acoust Seals</b>	
<b>Are intumescent seals in place?:</b>	Yes
<b>Are the seals free from damage?:</b>	Yes
<b>Are the smoke seals free from paint or varnish?:</b>	Yes
<b>Are the seals well attached inside the groove in the frame or door leaf?:</b>	Yes
<b>Are the seals continuous around the frame or door leaf?:</b>	Yes
<b>Is the smoke seal in full contact with the door giving an effective seal?:</b>	No
<b>Hinges</b>	

Is there a minimum of three hinges with all of the screws fitted?:	Yes
Are all the ironmongery screws secure and the correct size?:	Yes
Are the hinges free of metal fragment and oil leakage, which show signs of wear?:	No
Are intumescent packers installed behind hinge?:	Unable to Verify
Is all the ironmongery marked with CE stamp or BSEN 1935 grade 13 (or international equivalent)?:	Yes
Is all ironmongery free from damage and operating correctly?:	Yes
<b>Door Closers</b>	
Does the door have a closer?:	Yes
Open the door to 5 degrees or 75mm. Does it close and engage with the latch?:	N/A
Is the closer correctly attached to the door and frame?:	Yes
Is the closer free from damage and not leaking?:	No
If unlatched, does the closer hold the door in line with the frame and intumescent seal?:	Yes
If hung in pairs, do they close in line if both opened and released together? (optional):	N/A
Does the door close within the specified time required?:	No
<b>Hold Open Devices</b>	
Does the door have an electronically powered hold open device?:	Yes
Does the hold open device release the door when required?:	Yes
<b>Lock And Latch</b>	
Does the door have a lock and/or latch? :	Yes
Does the latch hold the door firmly in place without rattling?:	Yes
<b>Glazing And Glass</b>	
Does the door leaf contain a vision panel(s)?:	Yes
Is the intumescent seal continuous and attached to the glass and bead?:	Yes
Are the glazing beads correctly attached to the frame from both sides and free from damage?:	Yes
Is the glass free from damage and cracking?:	Yes
Is the glass identified as fire rated?:	Yes
If glazing panels are below 1500mm from bottom of door, is the glass safety glass?:	N/A
<b>Side And Overpanels</b>	
Are there side and overpanels installed?:	No
<b>Maintenance Remedial Works Required</b>	
Door gaps:	Ease and Adjustment, Install face-mounted drop-down seal
Door seals:	15mm intumescent/brush seals
Ironmongery:	3x Grade 13 hinges, Closer replacement/installation
Other:	FDKS
<b>Summary</b>	
<b>Summary / Recommendations:</b>	
Ease and adjustment	
3x grade 13 hinges	
2x FDKS fixed signage	
Face mounted drop down seal ( leaf 830mm)	
1x overhead closer	
<b>Priority</b>	
Priority:	2



Photo(s)  
Photo 1 of 4



Photo(s)  
Photo 2 of 4



Photo(s)  
Photo 3 of 4



Photo(s)  
Photo 4 of 4



**Pin Number:** 0009:28

**Company:** Element Passive Fire Protection Ltd

**Created By:** Costel Arsene - 28

**Template:** Door Maintenance

**Date Added:** 29/10/2024 - 10:31

**Location:** South Hampstead High School / South Hampstead High School - All Floors / South Hampstead High School - All Floors / EL1171 - South Hampstead High School - All Floors

**Status:** Action required

<b>Door Label</b>	
<b>Floor /Level:</b>	4
<b>Door Reference:</b>	Corridor
<b>Current FR:</b>	60s
<b>Required FR:</b>	60s
<b>Has the fire door got a third party fire door scheme label or plug fitted?:</b>	No
<b>Can you confirm that the door is in fact a fire door and has been proven as such?:</b>	Nominal fd60s
<b>Door type</b>	
<b>Door set type:</b>	Single Leaf - Single Action
<b>Door Aesthetics :</b>	Painted
<b>Architrave type:</b>	Bullnose
<b>Door leaf handing:</b>	Left-handed
<b>Door set condition</b>	
<b>Is the door set free from damage?:</b>	Yes
<b>Maintenance or no action?:</b>	Maintenance
<b>Door Leaf</b>	
<b>Does the door leaf sit against the door stop and is it free from distortion?:</b>	Yes
<b>If the door is veneered or lipped, is the glue still holding these products firmly in place?:</b>	Yes
<b>Is the door leaf free from damage affecting its fire integrity?:</b>	Yes
<b>Does the door have the correct signage?:</b>	No
<b>Door Frame</b>	
<b>Is the door frame firmly attached to the wall?:</b>	Yes
<b>If a planted door stop is present, is it firmly attached?:</b>	Yes
<b>Are the frame to door leaf gaps in line with the manufacturers installation instructions/testing? :</b>	No
<b>Meeting Edge Gap:</b>	4
<b>Leading Edge Gap:</b>	1
<b>Top Edge Gap:</b>	5
<b>Is the door frame free from damage affecting its fire integrity?:</b>	Yes
<b>Is there a consistent gap under the door that allows it to swing without touching floor covering?:</b>	Yes
<b>Is the door to floor covering gap in line with the manufacturer's installation instructions / testing?:</b>	Yes
<b>Threshold Gap:</b>	4
<b>Intumescent/Smoke/Acoust Seals</b>	
<b>Are intumescent seals in place?:</b>	Yes
<b>Are the seals free from damage?:</b>	No
<b>Are the smoke seals free from paint or varnish?:</b>	Yes
<b>Are the seals well attached inside the groove in the frame or door leaf?:</b>	Yes
<b>Are the seals continuous around the frame or door leaf?:</b>	Yes
<b>Is the smoke seal in full contact with the door giving an effective seal?:</b>	No
<b>Hinges</b>	

Is there a minimum of three hinges with all of the screws fitted?:	Yes
Are all the ironmongery screws secure and the correct size?:	Yes
Are the hinges free of metal fragment and oil leakage, which show signs of wear?:	No
Are intumescent packers installed behind hinge?:	Unable to Verify
Is all the ironmongery marked with CE stamp or BSEN 1935 grade 13 (or international equivalent)?:	Yes
Is all ironmongery free from damage and operating correctly?:	Yes
<b>Door Closers</b>	
Does the door have a closer?:	Yes
Open the door to 5 degrees or 75mm. Does it close and engage with the latch?:	Yes
Is the closer correctly attached to the door and frame?:	Yes
Is the closer free from damage and not leaking?:	Yes
If unlatched, does the closer hold the door in line with the frame and intumescent seal?:	Yes
If hung in pairs, do they close in line if both opened and released together? (optional):	N/A
Does the door close within the specified time required?:	No
<b>Hold Open Devices</b>	
Does the door have an electronically powered hold open device?:	No
<b>Lock And Latch</b>	
Does the door have a lock and/or latch? :	Yes
Does the latch hold the door firmly in place without rattling?:	Yes
<b>Glazing And Glass</b>	
Does the door leaf contain a vision panel(s)?:	Yes
Is the intumescent seal continuous and attached to the glass and bead?:	Yes
Are the glazing beads correctly attached to the frame from both sides and free from damage?:	Yes
Is the glass free from damage and cracking?:	Yes
Is the glass identified as fire rated?:	Yes
If glazing panels are below 1500mm from bottom of door, is the glass safety glass?:	N/A
<b>Side And Overpanels</b>	
Are there side and overpanels installed?:	No
<b>Maintenance Remedial Works Required</b>	
Door gaps:	Ease and Adjustment
Door seals:	15mm intumescent/brush seals
Ironmongery:	3x Grade 13 hinges, Closer Adjustment
Other:	FDKS
<b>Summary</b>	
<b>Summary / Recommendations:</b>	
Ease and adjustment	
3x grade 13 hinges	
2x FDKS fixed signage	
Closer adjustment	
<b>Priority</b>	
Priority:	2





Photo(s)  
Photo 1 of 4



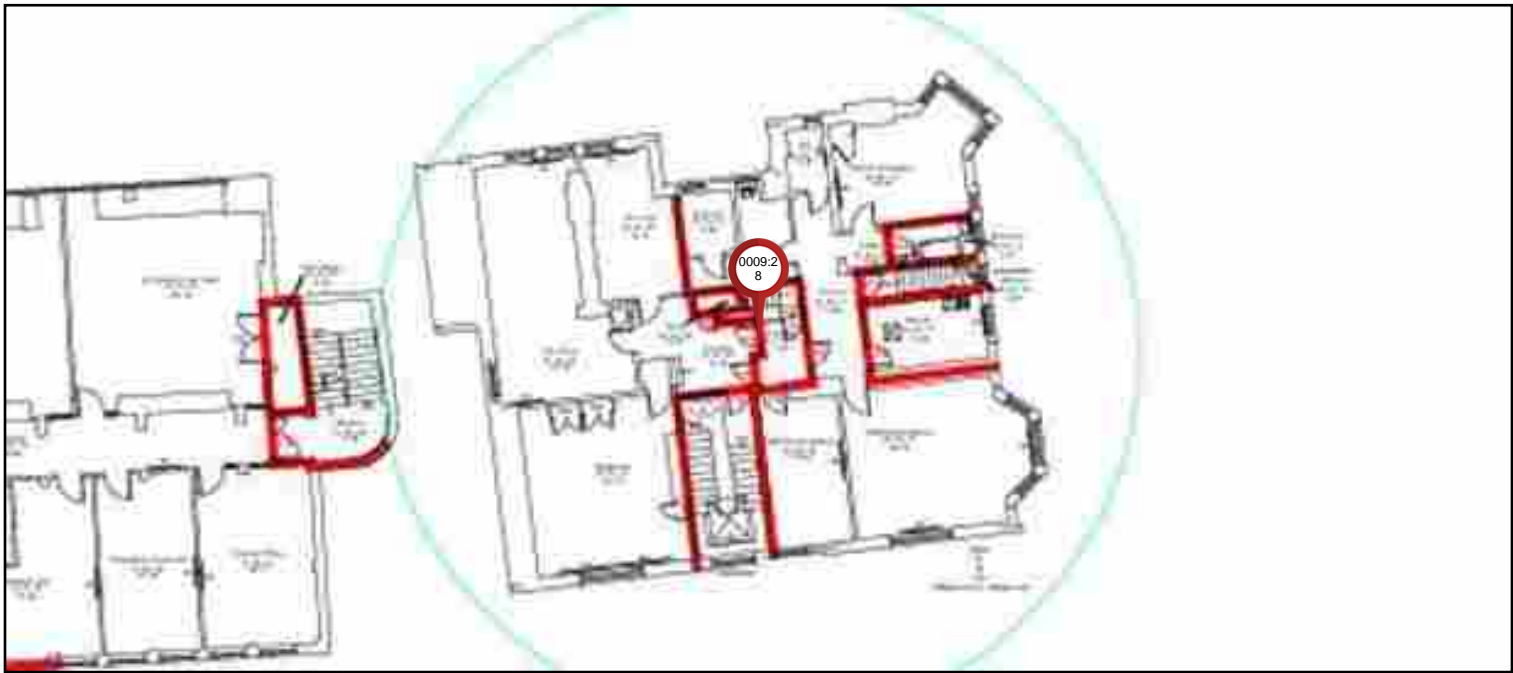
Photo(s)  
Photo 2 of 4



Photo(s)  
Photo 3 of 4



Photo(s)  
Photo 4 of 4





**Pin Number:** 0010:28

**Company:** Element Passive Fire Protection Ltd

**Created By:** Costel Arsene - 28

**Template:** Door Maintenance

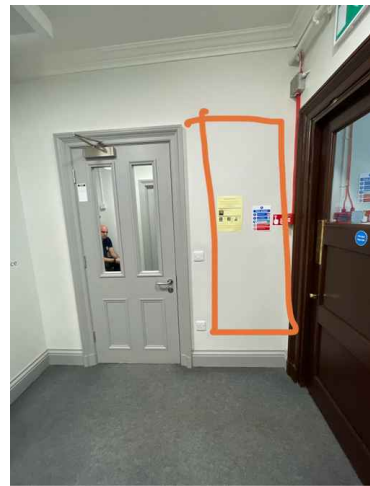
**Date Added:** 29/10/2024 - 10:32

**Location:** South Hampstead High School / South Hampstead High School - All Floors / South Hampstead High School - All Floors / EL1171 - South Hampstead High School - All Floors

**Status:** No action

<b>Door Label</b>	
<b>Floor /Level:</b>	4
<b>Door Reference:</b>	Corridor
<b>Current FR:</b>	NR
<b>Required FR:</b>	NR
<b>Has the fire door got a third party fire door scheme label or plug fitted?:</b>	No
<b>Door type</b>	
<b>Door set type:</b>	Single Leaf - Single Action
<b>Door Aesthetics :</b>	Painted
<b>Architrave type:</b>	Bullnose
<b>Door leaf handing:</b>	Left-handed
<b>Door set condition</b>	
<b>Is the door set free from damage?:</b>	Yes
<b>Maintenance or no action?:</b>	No action
<b>Door Leaf</b>	
<b>Does the door leaf sit against the door stop and is it free from distortion?:</b>	N/A
<b>If the door is veneered or lipped, is the glue still holding these products firmly in place?:</b>	N/A
<b>Is the door leaf free from damage affecting its fire integrity?:</b>	N/A
<b>Does the door have the correct signage?:</b>	N/A
<b>Door Frame</b>	
<b>Is the door frame firmly attached to the wall?:</b>	N/A
<b>If a planted door stop is present, is it firmly attached?:</b>	N/A
<b>Are the frame to door leaf gaps in line with the manufacturers installation instructions/testing? :</b>	N/A
<b>Is the door frame free from damage affecting its fire integrity?:</b>	N/A
<b>Is there a consistent gap under the door that allows it to swing without touching floor covering?:</b>	N/A
<b>Is the door to floor covering gap in line with the manufacturer's installation instructions / testing?:</b>	N/A
<b>Intumescent/Smoke/Acoust Seals</b>	
<b>Are intumescent seals in place?:</b>	N/A
<b>Hinges</b>	
<b>Is there a minimum of three hinges with all of the screws fitted?:</b>	N/A
<b>Are all the ironmongery screws secure and the correct size?:</b>	N/A
<b>Are the hinges free of metal fragment and oil leakage, which show signs of wear?:</b>	N/A
<b>Are intumescent packers installed behind hinge?:</b>	N/A
<b>Is all the ironmongery marked with CE stamp or BSEN 1935 grade 13 (or international equivalent)?:</b>	N/A
<b>Is all ironmongery free from damage and operating correctly?:</b>	N/A
<b>Door Closers</b>	
<b>Does the door have a closer?:</b>	N/A
<b>Hold Open Devices</b>	
<b>Does the door have an electronically powered hold open device?:</b>	N/A

Lock And Latch	
Does the door have a lock and/or latch? :	N/A
Glazing And Glass	
Does the door leaf contain a vision panel(s)?:	N/A
Side And Overpanels	
Are there side and overpanels installed?:	N/A
Summary	
Summary / Recomendations:	
No door set in place as per drawing	



Photo(s)  
Photo 1 of 1



**Pin Number:** 0011:28  
**Company:** Element Passive Fire Protection Ltd  
  
**Created By:** Costel Arsene - 28  
**Template:** Door Maintenance

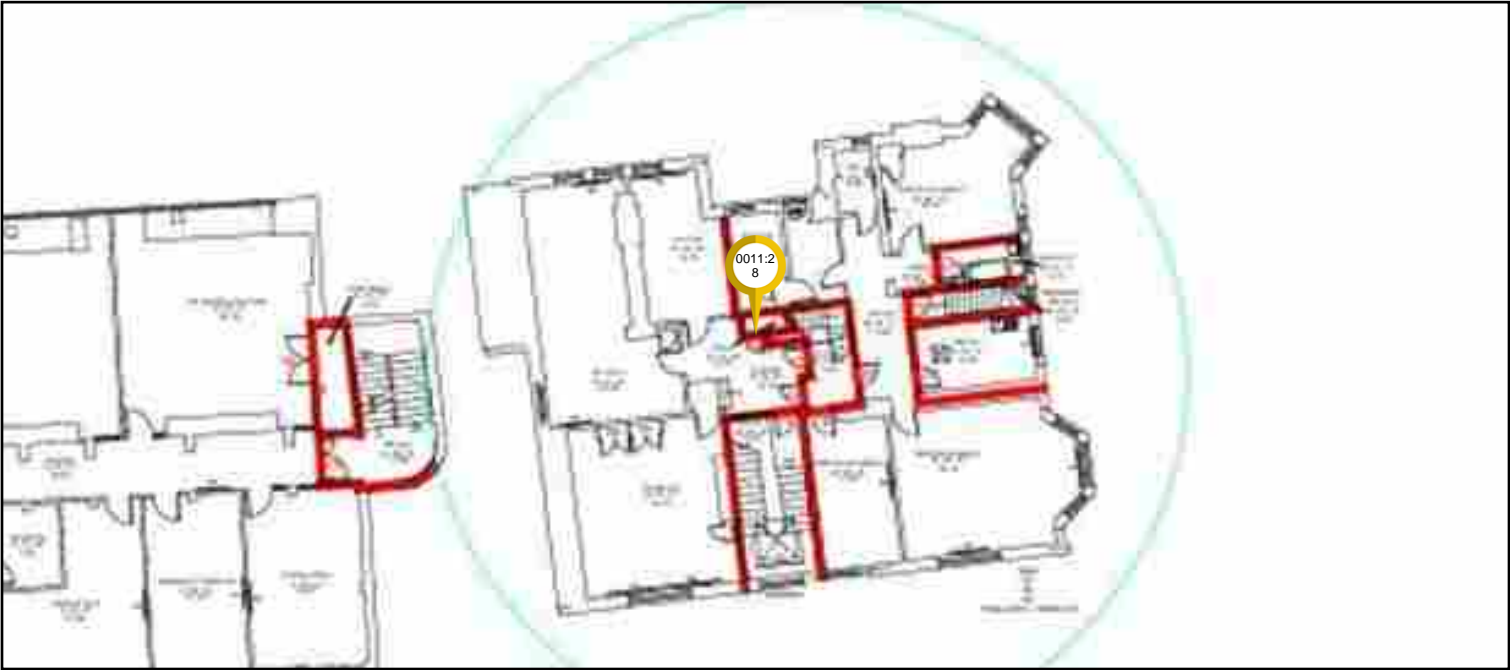
**Date Added:** 29/10/2024 - 10:33  
**Location:** South Hampstead High School / South Hampstead High School - All Floors / South Hampstead High School - All Floors / EL1171 - South Hampstead High School - All Floors  
**Status:** No action

<b>Door Label</b>	
<b>Floor /Level:</b>	3
<b>Door Reference:</b>	Storage room
<b>Current FR:</b>	30
<b>Required FR:</b>	30
<b>Has the fire door got a third party fire door scheme label or plug fitted?:</b>	No
<b>Can you confirm that the door is in fact a fire door and has been proven as such?:</b>	Nominal fd30
<b>Door type</b>	
<b>Door set type:</b>	Single Leaf - Single Action
<b>Door Aesthetics :</b>	Painted
<b>Architrave type:</b>	Bullnose
<b>Door leaf handing:</b>	Right-handed
<b>Door set condition</b>	
<b>Is the door set free from damage?:</b>	Yes
<b>Maintenance or no action?:</b>	No action
<b>Door Leaf</b>	
<b>Does the door leaf sit against the door stop and is it free from distortion?:</b>	N/A
<b>If the door is veneered or lipped, is the glue still holding these products firmly in place?:</b>	N/A
<b>Is the door leaf free from damage affecting its fire integrity?:</b>	N/A
<b>Does the door have the correct signage?:</b>	N/A
<b>Door Frame</b>	
<b>Is the door frame firmly attached to the wall?:</b>	N/A
<b>If a planted door stop is present, is it firmly attached?:</b>	N/A
<b>Are the frame to door leaf gaps in line with the manufacturers installation instructions/testing? :</b>	N/A
<b>Is the door frame free from damage affecting its fire integrity?:</b>	N/A
<b>Is there a consistent gap under the door that allows it to swing without touching floor covering?:</b>	N/A
<b>Is the door to floor covering gap in line with the manufacturer's installation instructions / testing?:</b>	N/A
<b>Intumescent/Smoke/Acoust Seals</b>	
<b>Are intumescent seals in place?:</b>	N/A
<b>Hinges</b>	
<b>Is there a minimum of three hinges with all of the screws fitted?:</b>	N/A
<b>Are all the ironmongery screws secure and the correct size?:</b>	N/A
<b>Are the hinges free of metal fragment and oil leakage, which show signs of wear?:</b>	N/A
<b>Are intumescent packers installed behind hinge?:</b>	N/A
<b>Is all the ironmongery marked with CE stamp or BSEN 1935 grade 13 (or international equivalent)?:</b>	N/A
<b>Is all ironmongery free from damage and operating correctly?:</b>	N/A
<b>Door Closers</b>	
<b>Does the door have a closer?:</b>	N/A
<b>Hold Open Devices</b>	

Does the door have an electronically powered hold open device?:	N/A
Lock And Latch	
Does the door have a lock and/or latch? :	N/A
Glazing And Glass	
Does the door leaf contain a vision panel(s)?:	N/A
Side And Overpanels	
Are there side and overpanels installed?:	N/A
Summary	
Summary / Recomendations:	
No access during the time of survey	



Photo(s)  
Photo 1 of 1



**Pin Number:** 0012:28  
**Company:** Element Passive Fire Protection Ltd  
  
**Created By:** Costel Arsene - 28  
**Template:** Door Maintenance

**Date Added:** 29/10/2024 - 10:39  
**Location:** South Hampstead High School / South Hampstead High School - All Floors / South Hampstead High School - All Floors / EL1171 - South Hampstead High School - All Floors  
**Status:** Action required

<b>Door Label</b>	
<b>Floor /Level:</b>	4
<b>Door Reference:</b>	Staircase
<b>Current FR:</b>	30
<b>Required FR:</b>	30
<b>Has the fire door got a third party fire door scheme label or plug fitted?:</b>	No
<b>Can you confirm that the door is in fact a fire door and has been proven as such?:</b>	Nominal fd30
<b>Door type</b>	
<b>Door set type:</b>	Single Leaf - Single Action
<b>Door Aesthetics :</b>	Painted
<b>Architrave type:</b>	Bullnose
<b>Door leaf handing:</b>	Left-handed
<b>Door set condition</b>	
<b>Is the door set free from damage?:</b>	Yes
<b>Maintenance or no action?:</b>	Maintenance
<b>Door Leaf</b>	
<b>Does the door leaf sit against the door stop and is it free from distortion?:</b>	N/A
<b>If the door is veneered or lipped, is the glue still holding these products firmly in place?:</b>	Yes
<b>Is the door leaf free from damage affecting its fire integrity?:</b>	Yes
<b>Does the door have the correct signage?:</b>	Yes
<b>Door Frame</b>	
<b>Is the door frame firmly attached to the wall?:</b>	Yes
<b>If a planted door stop is present, is it firmly attached?:</b>	Yes
<b>Are the frame to door leaf gaps in line with the manufacturers installation instructions/testing? :</b>	Yes
<b>Is the door frame free from damage affecting its fire integrity?:</b>	Yes
<b>Is there a consistent gap under the door that allows it to swing without touching floor covering?:</b>	Yes
<b>Is the door to floor covering gap in line with the manufacturer's installation instructions / testing?:</b>	No
<b>Intumescent/Smoke/Acoust Seals</b>	
<b>Are intumescent seals in place?:</b>	N/A
<b>Hinges</b>	
<b>Is there a minimum of three hinges with all of the screws fitted?:</b>	No
<b>Are all the ironmongery screws secure and the correct size?:</b>	Yes
<b>Are the hinges free of metal fragment and oil leakage, which show signs of wear?:</b>	Yes
<b>Are intumescent packers installed behind hinge?:</b>	Unable to Verify
<b>Is all the ironmongery marked with CE stamp or BSEN 1935 grade 13 (or international equivalent)?:</b>	No
<b>Is all ironmongery free from damage and operating correctly?:</b>	Yes
<b>Door Closers</b>	
<b>Does the door have a closer?:</b>	Yes
<b>Open the door to 5 degrees or 75mm. Does it close and engage with the latch?:</b>	No

Is the closer correctly attached to the door and frame?:	Yes
Is the closer free from damage and not leaking?:	Yes
If unlatched, does the closer hold the door in line with the frame and intumescent seal?:	Yes
If hung in pairs, do they close in line if both opened and released together? (optional):	N/A
Does the door close within the specified time required?:	No
<b>Hold Open Devices</b>	
Does the door have an electronically powered hold open device?:	No
<b>Lock And Latch</b>	
Does the door have a lock and/or latch? :	Yes
Does the latch hold the door firmly in place without rattling?:	No
<b>Glazing And Glass</b>	
Does the door leaf contain a vision panel(s)?:	Yes
Is the intumescent seal continuous and attached to the glass and bead?:	Yes
Are the glazing beads correctly attached to the frame from both sides and free from damage?:	Yes
Is the glass free from damage and cracking?:	Yes
Is the glass identified as fire rated?:	Yes
If glazing panels are below 1500mm from bottom of door, is the glass safety glass?:	N/A
<b>Side And Overpanels</b>	
Are there side and overpanels installed?:	Yes
Panel Type:	Glass
Is the intumescent seal continuous and attached to the glass and bead?:	Yes
Are the glazing beads correctly attached to the frame from both sides and free from damage?:	Yes
Is the glass free from damage and cracking?:	Yes
Is the Glass identified as fire rated?:	Yes
If glazing panels are below 1500mm from bottom of door, is the glass safety glass?:	N/A
<b>Maintenance Remedial Works Required</b>	
Door gaps:	Ease and Adjustment, Install face-mounted drop-down seal
Door seals:	15mm intumescent/brush seals
Ironmongery:	3x Grade 13 hinges, Lock & Latch Replacement (including handles), Closer Adjustment
<b>Summary</b>	
<b>Summary / Recomendations:</b>	
Ease and adjustment	
15mm intumescent brush strips	
3x grade 13 hinges	
closer adjustment	
Face mounted drop down seal (leaf 780mm)	
<b>Priority</b>	
Priority:	2



Photo(s)  
Photo 1 of 4



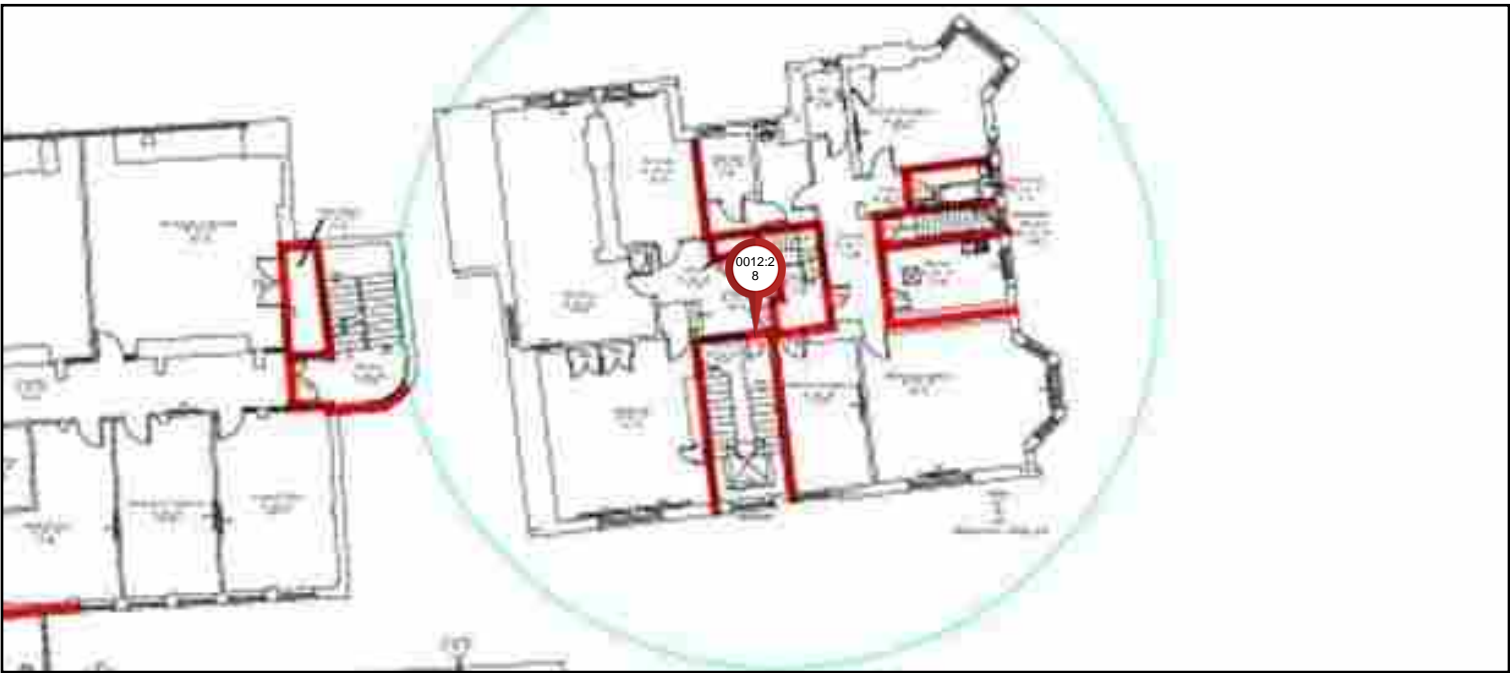
Photo(s)  
Photo 2 of 4



Photo(s)  
Photo 3 of 4



Photo(s)  
Photo 4 of 4





**Pin Number:** 0013:28

**Company:** Element Passive Fire Protection Ltd

**Created By:** Costel Arsene - 28

**Template:** Door Maintenance

**Date Added:** 29/10/2024 - 10:53

**Location:** South Hampstead High School / South Hampstead High School - All Floors / South Hampstead High School - All Floors / EL1171 - South Hampstead High School - All Floors

**Status:** Action required

<b>Door Label</b>	
<b>Floor /Level:</b>	3
<b>Door Reference:</b>	Staircase
<b>Current FR:</b>	30
<b>Required FR:</b>	30
<b>Has the fire door got a third party fire door scheme label or plug fitted?:</b>	No
<b>Can you confirm that the door is in fact a fire door and has been proven as such?:</b>	Nominal fd30
<b>Door type</b>	
<b>Door set type:</b>	Single Leaf - Single Action
<b>Door Aesthetics :</b>	Painted
<b>Architrave type:</b>	Bullnose
<b>Door leaf handing:</b>	Right-handed
<b>Door set condition</b>	
<b>Is the door set free from damage?:</b>	No
<b>Door leaf or door set replacement?:</b>	Replacement door set
<b>Door Leaf</b>	
<b>Does the door leaf sit against the door stop and is it free from distortion?:</b>	N/A
<b>If the door is veneered or lipped, is the glue still holding these products firmly in place?:</b>	N/A
<b>Is the door leaf free from damage affecting its fire integrity?:</b>	N/A
<b>Does the door have the correct signage?:</b>	N/A
<b>Door Frame</b>	
<b>Is the door frame firmly attached to the wall?:</b>	N/A
<b>If a planted door stop is present, is it firmly attached?:</b>	N/A
<b>Are the frame to door leaf gaps in line with the manufacturers installation instructions/testing? :</b>	N/A
<b>Is the door frame free from damage affecting its fire integrity?:</b>	N/A
<b>Is there a consistent gap under the door that allows it to swing without touching floor covering?:</b>	N/A
<b>Is the door to floor covering gap in line with the manufacturer's installation instructions / testing?:</b>	N/A
<b>Intumescent/Smoke/Acoust Seals</b>	
<b>Are intumescent seals in place?:</b>	N/A
<b>Hinges</b>	
<b>Is there a minimum of three hinges with all of the screws fitted?:</b>	N/A
<b>Are all the ironmongery screws secure and the correct size?:</b>	N/A
<b>Are the hinges free of metal fragment and oil leakage, which show signs of wear?:</b>	N/A
<b>Are intumescent packers installed behind hinge?:</b>	N/A
<b>Is all the ironmongery marked with CE stamp or BSEN 1935 grade 13 (or international equivalent)?:</b>	N/A
<b>Is all ironmongery free from damage and operating correctly?:</b>	N/A
<b>Door Closers</b>	
<b>Does the door have a closer?:</b>	N/A
<b>Hold Open Devices</b>	

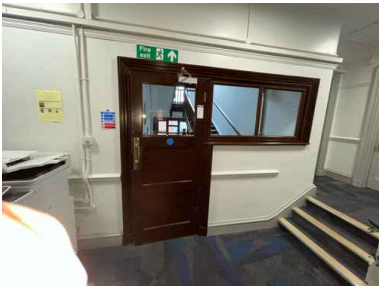
Does the door have an electronically powered hold open device?:	N/A
Lock And Latch	
Does the door have a lock and/or latch? :	N/A
Glazing And Glass	
Does the door leaf contain a vision panel(s)?:	N/A
Side And Overpanels	
Are there side and overpanels installed?:	N/A
Replacement door leaf/ Replacement door set	
Replacement door set (structural opening) width:	865
Replacement door set (structural opening) height:	2045
Replacement door set (structural opening) wall depth:	110
Architrave width:	120
Summary	
Summary / Recomendations:	
Due to excessive damage on door leaf all door set need to be replaced inclusive of following:	
3x grade 13 hinges	
2x FDKS fixed signage	
1x overhead closer	
15mm intumescent brush strips	
1x push plate	
1x pull handle	
Lock and latch	
1x vp ( 590x540mm)	
Glass Side panel ( 1270x600mm)	
Priority	
Priority:	2



Photo(s)  
Photo 1 of 3



Photo(s)  
Photo 2 of 3



Photo(s)  
Photo 3 of 3



**Pin Number:** 0014:28

**Company:** Element Passive Fire Protection Ltd

**Created By:** Costel Arsene - 28

**Template:** Door Maintenance

**Date Added:** 29/10/2024 - 10:59

**Location:** South Hampstead High School / South Hampstead High School - All Floors / South Hampstead High School - All Floors / EL1171 - South Hampstead High School - All Floors

**Status:** Action required

Door Label	
Floor /Level:	3
Door Reference:	Oakwood bridge
Current FR:	30
Required FR:	30
Has the fire door got a third party fire door scheme label or plug fitted?:	No
Can you confirm that the door is in fact a fire door and has been proven as such?:	Nominal fd30
Door type	
Door set type:	Double Leaf - Single Action
Door Aesthetics :	Painted
Architrave type:	Bullnose
Door leaf handing:	Double door
Door set condition	
Is the door set free from damage?:	Yes
Maintenance or no action?:	Maintenance
Door Leaf	
Does the door leaf sit against the door stop and is it free from distortion?:	Yes
If the door is veneered or lipped, is the glue still holding these products firmly in place?:	Yes
Is the door leaf free from damage affecting its fire integrity?:	Yes
Does the door have the correct signage?:	No
Door Frame	
Is the door frame firmly attached to the wall?:	Yes
If a planted door stop is present, is it firmly attached?:	Yes
Are the frame to door leaf gaps in line with the manufacturers installation instructions/testing? :	Yes
Is the door frame free from damage affecting its fire integrity?:	Yes
Is there a consistent gap under the door that allows it to swing without touching floor covering?:	Yes
Is the door to floor covering gap in line with the manufacturer's installation instructions / testing?:	No
Intumescent/Smoke/Acoust Seals	
Are intumescent seals in place?:	Yes
Are the seals free from damage?:	No
Are the smoke seals free from paint or varnish?:	No
Are the seals well attached inside the groove in the frame or door leaf?:	Yes
Are the seals continuous around the frame or door leaf?:	Yes
Is the smoke seal in full contact with the door giving an effective seal?:	No
Hinges	
Is there a minimum of three hinges with all of the screws fitted?:	Yes
Are all the ironmongery screws secure and the correct size?:	Yes
Are the hinges free of metal fragment and oil leakage, which show signs of wear?:	Yes
Are intumescent packers installed behind hinge?:	Unable to Verify

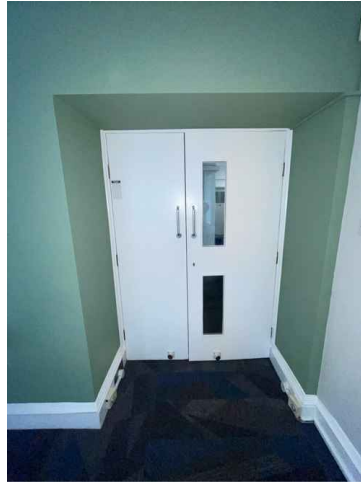
Is all the ironmongery marked with CE stamp or BSEN 1935 grade 13 (or international equivalent)?:	No
Is all ironmongery free from damage and operating correctly?:	Yes
<b>Door Closers</b>	
Does the door have a closer?:	Yes
Open the door to 5 degrees or 75mm. Does it close and engage with the latch?:	No
Is the closer correctly attached to the door and frame?:	Yes
Is the closer free from damage and not leaking?:	Yes
If unlatched, does the closer hold the door in line with the frame and intumescent seal?:	Yes
If hung in pairs, do they close in line if both opened and released together? (optional):	No
Does the door close within the specified time required?:	No
<b>Hold Open Devices</b>	
Does the door have an electronically powered hold open device?:	Yes
Does the hold open device release the door when required?:	Yes
<b>Lock And Latch</b>	
Does the door have a lock and/or latch? :	Yes
Does the latch hold the door firmly in place without rattling?:	Yes
<b>Glazing And Glass</b>	
Does the door leaf contain a vision panel(s)?:	Yes
Is the intumescent seal continuous and attached to the glass and bead?:	Yes
Are the glazing beads correctly attached to the frame from both sides and free from damage?:	Yes
Is the glass free from damage and cracking?:	Yes
Is the glass identified as fire rated?:	Yes
If glazing panels are below 1500mm from bottom of door, is the glass safety glass?:	N/A
<b>Side And Overpanels</b>	
Are there side and overpanels installed?:	No
<b>Maintenance Remedial Works Required</b>	
Door gaps:	Ease and Adjustment
Door seals:	10mm intumescent/brush seals
Ironmongery:	6x Grade 13 hinges, Closer replacement/installation
Other:	AFDCK
<b>Summary</b>	
<b>Summary / Recomendations:</b>	
Ease and adjustment	
10mm intumescent brush strips	
6x grade 13 hinges	
2x AFDCK fixed signage ( only 2 in place at the moment)	
2x overhead closers	
<b>Priority</b>	
Priority:	2



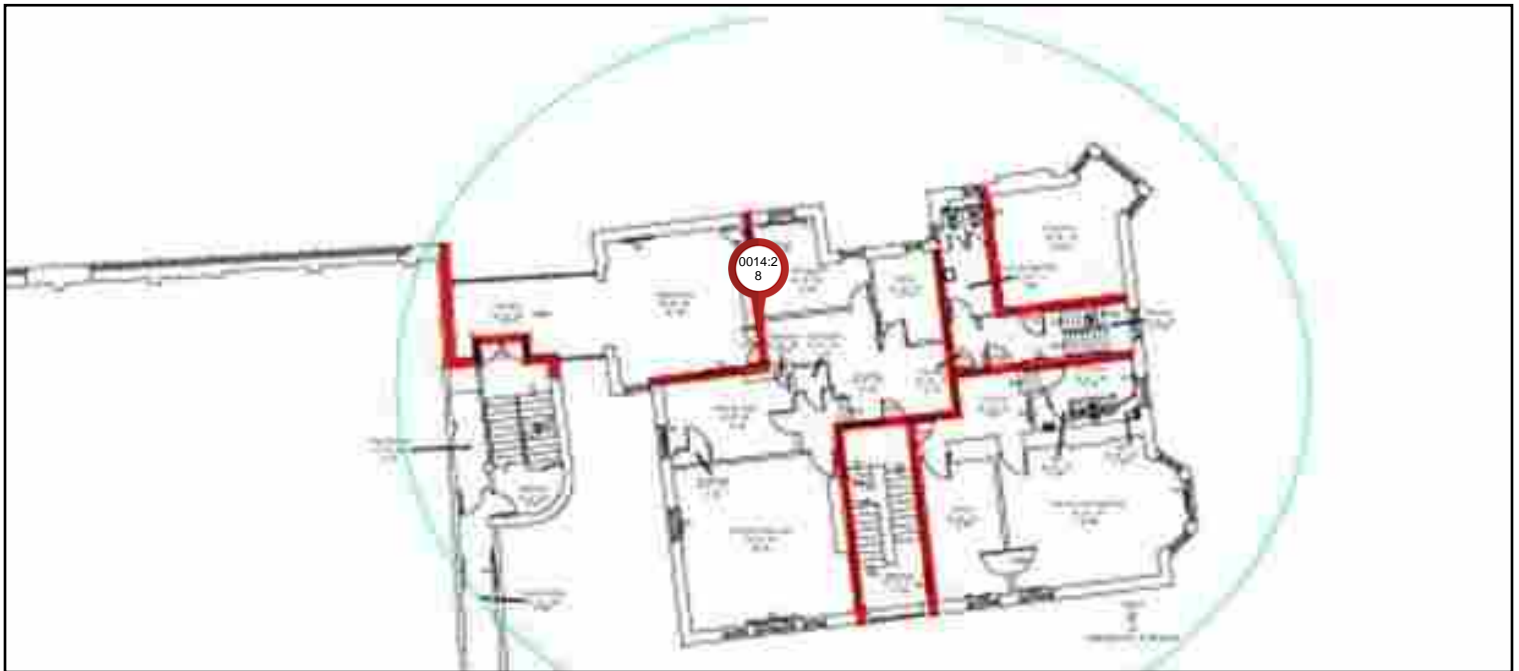
Photo(s)  
Photo 1 of 3



Photo(s)  
Photo 2 of 3



Photo(s)  
Photo 3 of 3



**Pin Number:** 0015:28  
**Company:** Element Passive Fire Protection Ltd  
  
**Created By:** Costel Arsene - 28  
**Template:** Door Maintenance

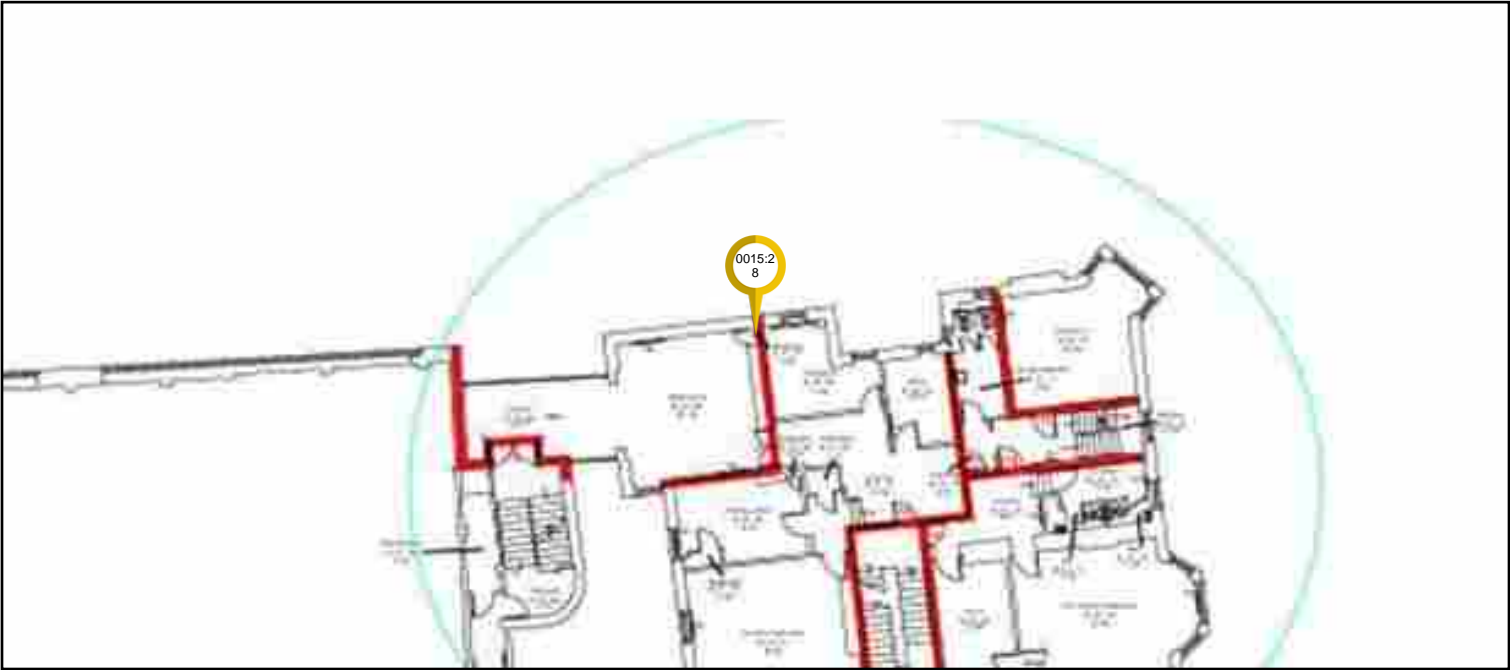
**Date Added:** 29/10/2024 - 11:00  
**Location:** South Hampstead High School / South Hampstead High School - All Floors / South Hampstead High School - All Floors / EL1171 - South Hampstead High School - All Floors  
**Status:** No action

<b>Door Label</b>	
<b>Floor /Level:</b>	3
<b>Door Reference:</b>	Cleaners cupboard
<b>Current FR:</b>	30
<b>Required FR:</b>	30
<b>Has the fire door got a third party fire door scheme label or plug fitted?:</b>	No
<b>Can you confirm that the door is in fact a fire door and has been proven as such?:</b>	Nominal fd30
<b>Door type</b>	
<b>Door set type:</b>	Single Leaf - Single Action
<b>Door Aesthetics :</b>	Painted
<b>Architrave type:</b>	Bullnose
<b>Door leaf handing:</b>	Left-handed
<b>Door set condition</b>	
<b>Is the door set free from damage?:</b>	Yes
<b>Maintenance or no action?:</b>	No action
<b>Door Leaf</b>	
<b>Does the door leaf sit against the door stop and is it free from distortion?:</b>	N/A
<b>If the door is veneered or lipped, is the glue still holding these products firmly in place?:</b>	N/A
<b>Is the door leaf free from damage affecting its fire integrity?:</b>	N/A
<b>Does the door have the correct signage?:</b>	N/A
<b>Door Frame</b>	
<b>Is the door frame firmly attached to the wall?:</b>	N/A
<b>If a planted door stop is present, is it firmly attached?:</b>	N/A
<b>Are the frame to door leaf gaps in line with the manufacturers installation instructions/testing? :</b>	N/A
<b>Is the door frame free from damage affecting its fire integrity?:</b>	N/A
<b>Is there a consistent gap under the door that allows it to swing without touching floor covering?:</b>	N/A
<b>Is the door to floor covering gap in line with the manufacturer's installation instructions / testing?:</b>	N/A
<b>Intumescent/Smoke/Acoust Seals</b>	
<b>Are intumescent seals in place?:</b>	N/A
<b>Hinges</b>	
<b>Is there a minimum of three hinges with all of the screws fitted?:</b>	N/A
<b>Are all the ironmongery screws secure and the correct size?:</b>	N/A
<b>Are the hinges free of metal fragment and oil leakage, which show signs of wear?:</b>	N/A
<b>Are intumescent packers installed behind hinge?:</b>	N/A
<b>Is all the ironmongery marked with CE stamp or BSEN 1935 grade 13 (or international equivalent)?:</b>	N/A
<b>Is all ironmongery free from damage and operating correctly?:</b>	N/A
<b>Door Closers</b>	
<b>Does the door have a closer?:</b>	N/A
<b>Hold Open Devices</b>	

Does the door have an electronically powered hold open device?:	N/A
Lock And Latch	
Does the door have a lock and/or latch? :	N/A
Glazing And Glass	
Does the door leaf contain a vision panel(s)?:	N/A
Side And Overpanels	
Are there side and overpanels installed?:	N/A
Summary	
Summary / Recomendations:	
No access during the time of survey	



Photo(s)  
Photo 1 of 1





**Pin Number:** 0016:28  
**Company:** Element Passive Fire Protection Ltd  
  
**Created By:** Costel Arsene - 28  
**Template:** Door Maintenance

**Date Added:** 29/10/2024 - 11:04  
**Location:** South Hampstead High School / South Hampstead High School - All Floors / South Hampstead High School - All Floors / EL1171 - South Hampstead High School - All Floors  
**Status:** Action required

<b>Door Label</b>	
<b>Floor /Level:</b>	3
<b>Door Reference:</b>	Oakwood bridge
<b>Current FR:</b>	30
<b>Required FR:</b>	30
<b>Has the fire door got a third party fire door scheme label or plug fitted?:</b>	No
<b>Can you confirm that the door is in fact a fire door and has been proven as such?:</b>	Nominal fd30
<b>Door type</b>	
<b>Door set type:</b>	Double Leaf - Single Action
<b>Door Aesthetics :</b>	Painted
<b>Architrave type:</b>	Bullnose
<b>Door leaf handing:</b>	Double door
<b>Door set condition</b>	
<b>Is the door set free from damage?:</b>	Yes
<b>Maintenance or no action?:</b>	Maintenance
<b>Door Leaf</b>	
<b>Does the door leaf sit against the door stop and is it free from distortion?:</b>	Yes
<b>If the door is veneered or lipped, is the glue still holding these products firmly in place?:</b>	Yes
<b>Is the door leaf free from damage affecting its fire integrity?:</b>	Yes
<b>Does the door have the correct signage?:</b>	No
<b>Door Frame</b>	
<b>Is the door frame firmly attached to the wall?:</b>	Yes
<b>If a planted door stop is present, is it firmly attached?:</b>	Yes
<b>Are the frame to door leaf gaps in line with the manufacturers installation instructions/testing? :</b>	Yes
<b>Is the door frame free from damage affecting its fire integrity?:</b>	Yes
<b>Is there a consistent gap under the door that allows it to swing without touching floor covering?:</b>	Yes
<b>Is the door to floor covering gap in line with the manufacturer's installation instructions / testing?:</b>	No
<b>Intumescent/Smoke/Acoust Seals</b>	
<b>Are intumescent seals in place?:</b>	Yes
<b>Are the seals free from damage?:</b>	Yes
<b>Are the smoke seals free from paint or varnish?:</b>	No
<b>Are the seals well attached inside the groove in the frame or door leaf?:</b>	Yes
<b>Are the seals continuous around the frame or door leaf?:</b>	Yes
<b>Is the smoke seal in full contact with the door giving an effective seal?:</b>	No
<b>Hinges</b>	
<b>Is there a minimum of three hinges with all of the screws fitted?:</b>	Yes
<b>Are all the ironmongery screws secure and the correct size?:</b>	Yes
<b>Are the hinges free of metal fragment and oil leakage, which show signs of wear?:</b>	No
<b>Are intumescent packers installed behind hinge?:</b>	Unable to Verify

Is all the ironmongery marked with CE stamp or BSEN 1935 grade 13 (or international equivalent)?:	Yes
Is all ironmongery free from damage and operating correctly?:	Yes
<b>Door Closers</b>	
Does the door have a closer?:	Yes
Open the door to 5 degrees or 75mm. Does it close and engage with the latch?:	No
Is the closer correctly attached to the door and frame?:	Yes
Is the closer free from damage and not leaking?:	Yes
If unlatched, does the closer hold the door in line with the frame and intumescent seal?:	Yes
If hung in pairs, do they close in line if both opened and released together? (optional):	No
Does the door close within the specified time required?:	No
<b>Hold Open Devices</b>	
Does the door have an electronically powered hold open device?:	Yes
Does the hold open device release the door when required?:	Yes
<b>Lock And Latch</b>	
Does the door have a lock and/or latch? :	No
<b>Glazing And Glass</b>	
Does the door leaf contain a vision panel(s)?:	Yes
Is the intumescent seal continuous and attached to the glass and bead?:	Yes
Are the glazing beads correctly attached to the frame from both sides and free from damage?:	Yes
Is the glass free from damage and cracking?:	Yes
Is the glass identified as fire rated?:	Yes
If glazing panels are below 1500mm from bottom of door, is the glass safety glass?:	N/A
<b>Side And Overpanels</b>	
Are there side and overpanels installed?:	Yes
Panel Type:	Glass
Is the intumescent seal continuous and attached to the glass and bead?:	Yes
Are the glazing beads correctly attached to the frame from both sides and free from damage?:	Yes
Is the glass free from damage and cracking?:	Yes
Is the Glass identified as fire rated?:	Yes
If glazing panels are below 1500mm from bottom of door, is the glass safety glass?:	N/A
<b>Maintenance Remedial Works Required</b>	
Door gaps:	Ease and Adjustment, Install face-mounted drop-down seal
Door seals:	15mm intumescent/brush seals
Ironmongery:	6x Grade 13 hinges, Closer Adjustment
Other:	AFDCK
<b>Summary</b>	
<b>Summary / Recomendations:</b>	
Ease and adjustment	
4x AFDKC fixed signage	
6x grade 13 hinges	
15mm intumescent brush strips	
Closers adjustment	
2x face mounted drop down seals ( leaves 840mm)	
<b>Priority</b>	

Priority:	2
-----------	---



Photo(s)  
Photo 1 of 4



Photo(s)  
Photo 2 of 4



Photo(s)  
Photo 3 of 4



Photo(s)  
Photo 4 of 4



**Pin Number:** 0017:28  
**Company:** Element Passive Fire Protection Ltd  
  
**Created By:** Costel Arsene - 28  
**Template:** Door Maintenance

**Date Added:** 29/10/2024 - 11:09  
**Location:** South Hampstead High School / South Hampstead High School - All Floors / South Hampstead High School - All Floors / EL1171 - South Hampstead High School - All Floors  
**Status:** Action required

<b>Door Label</b>	
<b>Floor /Level:</b>	3
<b>Door Reference:</b>	Cross corridor
<b>Current FR:</b>	30
<b>Required FR:</b>	30
<b>Has the fire door got a third party fire door scheme label or plug fitted?:</b>	No
<b>Can you confirm that the door is in fact a fire door and has been proven as such?:</b>	Nominal fd30
<b>Door type</b>	
<b>Door set type:</b>	Single Leaf - Single Action
<b>Door Aesthetics :</b>	Painted
<b>Architrave type:</b>	Bullnose
<b>Door leaf handing:</b>	Left-handed
<b>Door set condition</b>	
<b>Is the door set free from damage?:</b>	Yes
<b>Maintenance or no action?:</b>	Maintenance
<b>Door Leaf</b>	
<b>Does the door leaf sit against the door stop and is it free from distortion?:</b>	Yes
<b>If the door is veneered or lipped, is the glue still holding these products firmly in place?:</b>	Yes
<b>Is the door leaf free from damage affecting its fire integrity?:</b>	Yes
<b>Does the door have the correct signage?:</b>	No
<b>Door Frame</b>	
<b>Is the door frame firmly attached to the wall?:</b>	Yes
<b>If a planted door stop is present, is it firmly attached?:</b>	Yes
<b>Are the frame to door leaf gaps in line with the manufacturers installation instructions/testing? :</b>	Yes
<b>Is the door frame free from damage affecting its fire integrity?:</b>	Yes
<b>Is there a consistent gap under the door that allows it to swing without touching floor covering?:</b>	Yes
<b>Is the door to floor covering gap in line with the manufacturer's installation instructions / testing?:</b>	No
<b>Intumescent/Smoke/Acoust Seals</b>	
<b>Are intumescent seals in place?:</b>	Yes
<b>Are the seals free from damage?:</b>	No
<b>Are the smoke seals free from paint or varnish?:</b>	No
<b>Are the seals well attached inside the groove in the frame or door leaf?:</b>	Yes
<b>Are the seals continuous around the frame or door leaf?:</b>	Yes
<b>Is the smoke seal in full contact with the door giving an effective seal?:</b>	No
<b>Hinges</b>	
<b>Is there a minimum of three hinges with all of the screws fitted?:</b>	Yes
<b>Are all the ironmongery screws secure and the correct size?:</b>	No
<b>Are the hinges free of metal fragment and oil leakage, which show signs of wear?:</b>	No
<b>Are intumescent packers installed behind hinge?:</b>	Unable to Verify

Is all the ironmongery marked with CE stamp or BSEN 1935 grade 13 (or international equivalent)?:	No
Is all ironmongery free from damage and operating correctly?:	No
<b>Door Closers</b>	
Does the door have a closer?:	Yes
Open the door to 5 degrees or 75mm. Does it close and engage with the latch?:	Yes
Is the closer correctly attached to the door and frame?:	Yes
Is the closer free from damage and not leaking?:	Yes
If unlatched, does the closer hold the door in line with the frame and intumescent seal?:	Yes
If hung in pairs, do they close in line if both opened and released together? (optional):	N/A
Does the door close within the specified time required?:	Yes
<b>Hold Open Devices</b>	
Does the door have an electronically powered hold open device?:	No
<b>Lock And Latch</b>	
Does the door have a lock and/or latch? :	No
<b>Glazing And Glass</b>	
Does the door leaf contain a vision panel(s)?:	Yes
Is the intumescent seal continuous and attached to the glass and bead?:	Yes
Are the glazing beads correctly attached to the frame from both sides and free from damage?:	Yes
Is the glass free from damage and cracking?:	N/A
Is the glass identified as fire rated?:	Yes
If glazing panels are below 1500mm from bottom of door, is the glass safety glass?:	N/A
<b>Side And Overpanels</b>	
Are there side and overpanels installed?:	No
<b>Maintenance Remedial Works Required</b>	
Door gaps:	Ease and Adjustment, Install Lipping (BE), Install face-mounted drop-down seal
Door seals:	10mm intumescent/brush seals
Ironmongery:	3x Grade 13 hinges
Other:	FDKS
<b>Summary</b>	
<b>Summary / Recomendations:</b>	
Ease and adjustment	
10mm intumescent brush strips	
3x grade 13 hinges	
BE lipping , BE gap 20mm	
Face mounted drop down seal ( leaf 810mm)	
<b>Priority</b>	
Priority:	2



Photo(s)  
Photo 1 of 4



Photo(s)  
Photo 2 of 4



Photo(s)  
Photo 3 of 4



Photo(s)  
Photo 4 of 4



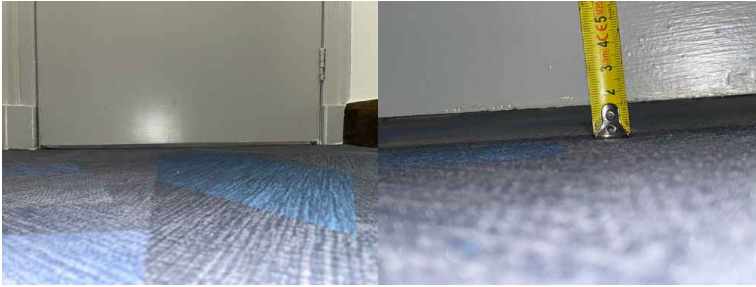
**Pin Number:** 0018:28  
**Company:** Element Passive Fire Protection Ltd  
  
**Created By:** Costel Arsene - 28  
**Template:** Door Maintenance

**Date Added:** 29/10/2024 - 11:15  
**Location:** South Hampstead High School / South Hampstead High School - All Floors / South Hampstead High School - All Floors / EL1171 - South Hampstead High School - All Floors  
**Status:** Action required

<b>Door Label</b>	
<b>Floor /Level:</b>	3
<b>Door Reference:</b>	Cross corridor
<b>Current FR:</b>	30
<b>Required FR:</b>	30
<b>Has the fire door got a third party fire door scheme label or plug fitted?:</b>	No
<b>Can you confirm that the door is in fact a fire door and has been proven as such?:</b>	Nominal fd30
<b>Door type</b>	
<b>Door set type:</b>	Single Leaf - Single Action
<b>Door Aesthetics :</b>	Painted
<b>Architrave type:</b>	Bullnose
<b>Door leaf handing:</b>	Right-handed
<b>Door set condition</b>	
<b>Is the door set free from damage?:</b>	Yes
<b>Maintenance or no action?:</b>	Maintenance
<b>Door Leaf</b>	
<b>Does the door leaf sit against the door stop and is it free from distortion?:</b>	Yes
<b>If the door is veneered or lipped, is the glue still holding these products firmly in place?:</b>	Yes
<b>Is the door leaf free from damage affecting its fire integrity?:</b>	Yes
<b>Does the door have the correct signage?:</b>	N/A
<b>Door Frame</b>	
<b>Is the door frame firmly attached to the wall?:</b>	Yes
<b>If a planted door stop is present, is it firmly attached?:</b>	Yes
<b>Are the frame to door leaf gaps in line with the manufacturers installation instructions/testing? :</b>	Yes
<b>Is the door frame free from damage affecting its fire integrity?:</b>	Yes
<b>Is there a consistent gap under the door that allows it to swing without touching floor covering?:</b>	Yes
<b>Is the door to floor covering gap in line with the manufacturer's installation instructions / testing?:</b>	No
<b>Intumescent/Smoke/Acoust Seals</b>	
<b>Are intumescent seals in place?:</b>	Yes
<b>Are the seals free from damage?:</b>	No
<b>Are the smoke seals free from paint or varnish?:</b>	No
<b>Are the seals well attached inside the groove in the frame or door leaf?:</b>	Yes
<b>Are the seals continuous around the frame or door leaf?:</b>	Yes
<b>Is the smoke seal in full contact with the door giving an effective seal?:</b>	No
<b>Hinges</b>	
<b>Is there a minimum of three hinges with all of the screws fitted?:</b>	Yes
<b>Are all the ironmongery screws secure and the correct size?:</b>	Yes
<b>Are the hinges free of metal fragment and oil leakage, which show signs of wear?:</b>	No
<b>Are intumescent packers installed behind hinge?:</b>	Unable to Verify

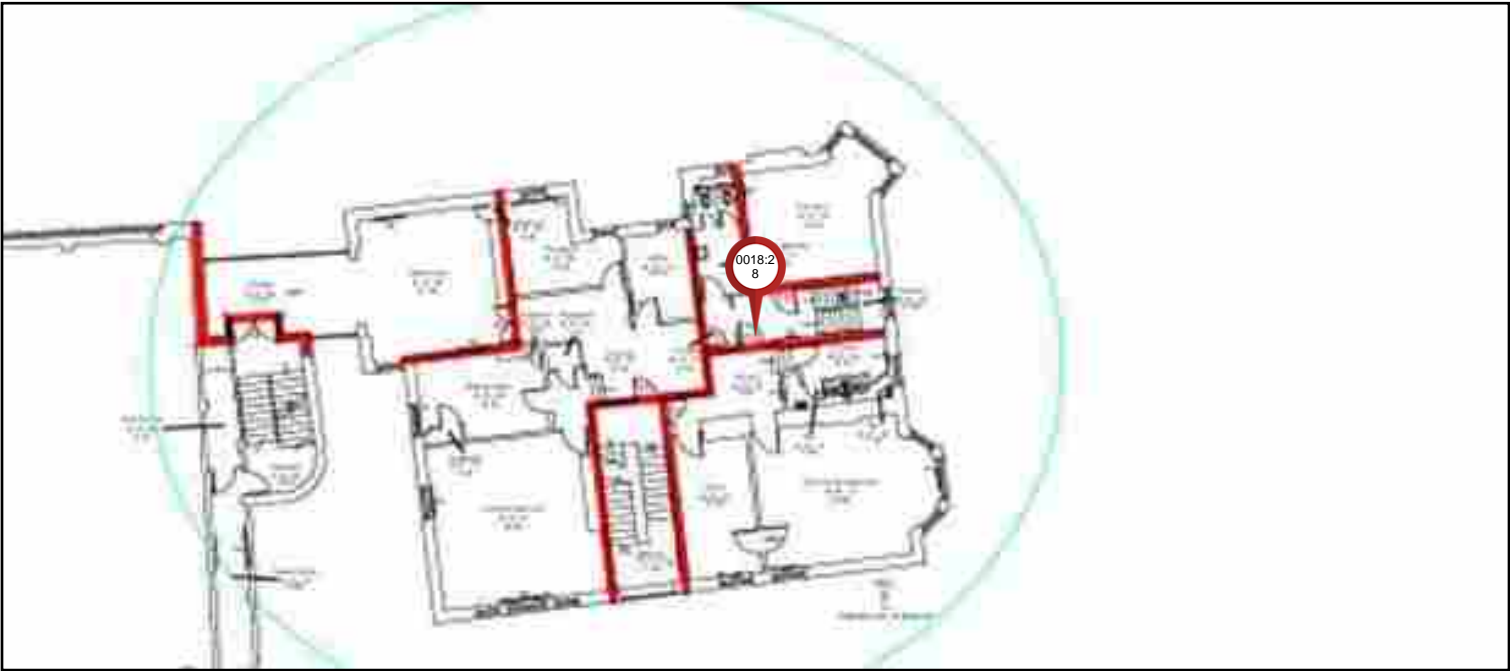
Is all the ironmongery marked with CE stamp or BSEN 1935 grade 13 (or international equivalent)?:	No
Is all ironmongery free from damage and operating correctly?:	Yes
<b>Door Closers</b>	
Does the door have a closer?:	Yes
Open the door to 5 degrees or 75mm. Does it close and engage with the latch?:	Yes
Is the closer correctly attached to the door and frame?:	Yes
Is the closer free from damage and not leaking?:	Yes
If unlatched, does the closer hold the door in line with the frame and intumescent seal?:	Yes
If hung in pairs, do they close in line if both opened and released together? (optional):	N/A
Does the door close within the specified time required?:	Yes
<b>Hold Open Devices</b>	
Does the door have an electronically powered hold open device?:	No
<b>Lock And Latch</b>	
Does the door have a lock and/or latch? :	No
<b>Glazing And Glass</b>	
Does the door leaf contain a vision panel(s)?:	Yes
Is the intumescent seal continuous and attached to the glass and bead?:	Yes
Are the glazing beads correctly attached to the frame from both sides and free from damage?:	Yes
Is the glass free from damage and cracking?:	Yes
Is the glass identified as fire rated?:	Yes
If glazing panels are below 1500mm from bottom of door, is the glass safety glass?:	N/A
<b>Side And Overpanels</b>	
Are there side and overpanels installed?:	No
<b>Maintenance Remedial Works Required</b>	
Door gaps:	Ease and Adjustment, Install face-mounted drop-down seal
Door seals:	10mm intumescent/brush seals
Ironmongery:	3x Grade 13 hinges
<b>Summary</b>	
<b>Summary / Recommendations:</b>	
Ease and adjustment	
10mm intumescent brush strips	
3x grade 13 hinges	
Face mounted drop down seal ( leaf 910mm)	
<b>Priority</b>	
Priority:	2





Photo(s)  
Photo 1 of 2

Photo(s)  
Photo 2 of 2



**Pin Number:** 0019:28

**Company:** Element Passive Fire Protection Ltd

**Created By:** Costel Arsene - 28

**Template:** Door Maintenance

**Date Added:** 29/10/2024 - 11:20

**Location:** South Hampstead High School / South Hampstead High School - All Floors / South Hampstead High School - All Floors / EL1171 - South Hampstead High School - All Floors

**Status:** Action required

<b>Door Label</b>	
<b>Floor /Level:</b>	3
<b>Door Reference:</b>	0308 sixth form teaching
<b>Current FR:</b>	30
<b>Required FR:</b>	30
<b>Has the fire door got a third party fire door scheme label or plug fitted?:</b>	No
<b>Can you confirm that the door is in fact a fire door and has been proven as such?:</b>	Nominal fd30
<b>Door type</b>	
<b>Door set type:</b>	Single Leaf - Single Action
<b>Door Aesthetics :</b>	Painted
<b>Architrave type:</b>	Bullnose
<b>Door leaf handing:</b>	Right-handed
<b>Door set condition</b>	
<b>Is the door set free from damage?:</b>	No
<b>Door leaf or door set replacement?:</b>	Replacement door set
<b>Door Leaf</b>	
<b>Does the door leaf sit against the door stop and is it free from distortion?:</b>	N/A
<b>If the door is veneered or lipped, is the glue still holding these products firmly in place?:</b>	N/A
<b>Is the door leaf free from damage affecting its fire integrity?:</b>	N/A
<b>Does the door have the correct signage?:</b>	N/A
<b>Door Frame</b>	
<b>Is the door frame firmly attached to the wall?:</b>	N/A
<b>If a planted door stop is present, is it firmly attached?:</b>	N/A
<b>Are the frame to door leaf gaps in line with the manufacturers installation instructions/testing? :</b>	N/A
<b>Is the door frame free from damage affecting its fire integrity?:</b>	N/A
<b>Is there a consistent gap under the door that allows it to swing without touching floor covering?:</b>	N/A
<b>Is the door to floor covering gap in line with the manufacturer's installation instructions / testing?:</b>	N/A
<b>Intumescent/Smoke/Acoust Seals</b>	
<b>Are intumescent seals in place?:</b>	N/A
<b>Hinges</b>	
<b>Is there a minimum of three hinges with all of the screws fitted?:</b>	N/A
<b>Are all the ironmongery screws secure and the correct size?:</b>	N/A
<b>Are the hinges free of metal fragment and oil leakage, which show signs of wear?:</b>	N/A
<b>Are intumescent packers installed behind hinge?:</b>	N/A
<b>Is all the ironmongery marked with CE stamp or BSEN 1935 grade 13 (or international equivalent)?:</b>	N/A
<b>Is all ironmongery free from damage and operating correctly?:</b>	N/A
<b>Door Closers</b>	
<b>Does the door have a closer?:</b>	N/A
<b>Hold Open Devices</b>	

Does the door have an electronically powered hold open device?:	N/A
Lock And Latch	
Does the door have a lock and/or latch? :	N/A
Glazing And Glass	
Does the door leaf contain a vision panel(s)?:	N/A
Side And Overpanels	
Are there side and overpanels installed?:	N/A
Replacement door leaf/ Replacement door set	
Replacement door set (structural opening) width:	950
Replacement door set (structural opening) height:	2065
Replacement door set (structural opening) wall depth:	270
Architrave width:	130
Summary	
Summary / Recomendations:	
Due to excessive damage on door leaf all door set need to be replaced inclusive of following:	
3x grade 13 hinges	
2x FDKS fixed signage	
1x overhead closer	
15mm intumescent brush strips	
Full lock and latch including handles	
Thumb turn euro cylinder	
1x vp ( 250x510mm )	
Aesthetic See picture	
Priority	
Priority:	2



Photo(s)  
Photo 1 of 4



Photo(s)  
Photo 2 of 4



Photo(s)  
Photo 3 of 4



Photo(s)  
Photo 4 of 4



**Pin Number:** 0020:28  
**Company:** Element Passive Fire Protection Ltd  
  
**Created By:** Costel Arsene - 28  
**Template:** Door Maintenance

**Date Added:** 29/10/2024 - 11:24  
**Location:** South Hampstead High School / South Hampstead High School - All Floors / South Hampstead High School - All Floors / EL1171 - South Hampstead High School - All Floors  
**Status:** Action required

<b>Door Label</b>	
<b>Floor /Level:</b>	3
<b>Door Reference:</b>	Staircase
<b>Current FR:</b>	30
<b>Required FR:</b>	30
<b>Has the fire door got a third party fire door scheme label or plug fitted?:</b>	No
<b>Can you confirm that the door is in fact a fire door and has been proven as such?:</b>	Nominal fd30
<b>Door type</b>	
<b>Door set type:</b>	Single Leaf - Single Action
<b>Door Aesthetics :</b>	Painted
<b>Architrave type:</b>	Bullnose
<b>Door leaf handing:</b>	Right-handed
<b>Door set condition</b>	
<b>Is the door set free from damage?:</b>	Yes
<b>Maintenance or no action?:</b>	Maintenance
<b>Door Leaf</b>	
<b>Does the door leaf sit against the door stop and is it free from distortion?:</b>	Yes
<b>If the door is veneered or lipped, is the glue still holding these products firmly in place?:</b>	Yes
<b>Is the door leaf free from damage affecting its fire integrity?:</b>	Yes
<b>Does the door have the correct signage?:</b>	Yes
<b>Door Frame</b>	
<b>Is the door frame firmly attached to the wall?:</b>	Yes
<b>If a planted door stop is present, is it firmly attached?:</b>	Yes
<b>Are the frame to door leaf gaps in line with the manufacturers installation instructions/testing? :</b>	Yes
<b>Is the door frame free from damage affecting its fire integrity?:</b>	Yes
<b>Is there a consistent gap under the door that allows it to swing without touching floor covering?:</b>	Yes
<b>Is the door to floor covering gap in line with the manufacturer's installation instructions / testing?:</b>	No
<b>Intumescent/Smoke/Acoust Seals</b>	
<b>Are intumescent seals in place?:</b>	Yes
<b>Are the seals free from damage?:</b>	No
<b>Are the smoke seals free from paint or varnish?:</b>	No
<b>Are the seals well attached inside the groove in the frame or door leaf?:</b>	Yes
<b>Are the seals continuous around the frame or door leaf?:</b>	Yes
<b>Is the smoke seal in full contact with the door giving an effective seal?:</b>	No
<b>Hinges</b>	
<b>Is there a minimum of three hinges with all of the screws fitted?:</b>	No
<b>Are all the ironmongery screws secure and the correct size?:</b>	Yes
<b>Are the hinges free of metal fragment and oil leakage, which show signs of wear?:</b>	Yes
<b>Are intumescent packers installed behind hinge?:</b>	Unable to Verify

Is all the ironmongery marked with CE stamp or BSEN 1935 grade 13 (or international equivalent)?:	No
Is all ironmongery free from damage and operating correctly?:	No
<b>Door Closers</b>	
Does the door have a closer?:	Yes
Open the door to 5 degrees or 75mm. Does it close and engage with the latch?:	No
Is the closer correctly attached to the door and frame?:	Yes
Is the closer free from damage and not leaking?:	No
If unlatched, does the closer hold the door in line with the frame and intumescent seal?:	Yes
If hung in pairs, do they close in line if both opened and released together? (optional):	N/A
Does the door close within the specified time required?:	No
<b>Hold Open Devices</b>	
Does the door have an electronically powered hold open device?:	No
<b>Lock And Latch</b>	
Does the door have a lock and/or latch? :	No
<b>Glazing And Glass</b>	
Does the door leaf contain a vision panel(s)?:	Yes
Is the intumescent seal continuous and attached to the glass and bead?:	Yes
Are the glazing beads correctly attached to the frame from both sides and free from damage?:	Yes
Is the glass free from damage and cracking?:	Yes
Is the glass identified as fire rated?:	Yes
If glazing panels are below 1500mm from bottom of door, is the glass safety glass?:	N/A
<b>Side And Overpanels</b>	
Are there side and overpanels installed?:	No
<b>Maintenance Remedial Works Required</b>	
Door gaps:	Ease and Adjustment, Install face-mounted drop-down seal
Door seals:	10mm intumescent/brush seals
Ironmongery:	3x Grade 13 hinges, Closer replacement/installation
<b>Summary</b>	
<b>Summary / Recommendations:</b>	
Ease and adjustment	
10mm intumescent brush strips	
3x grade 13 hinges	
1x overhead closer	
Face mounted drop down seal ( leaf 790mm)	
<b>Priority</b>	
Priority:	2



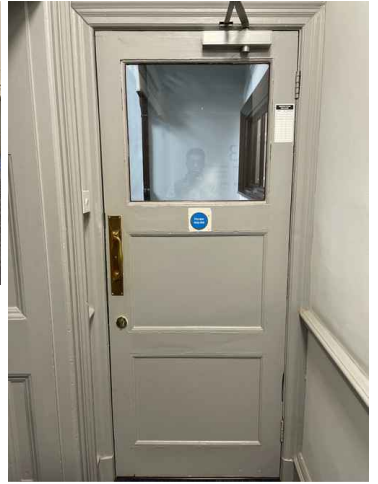
Photo(s)  
Photo 1 of 4



Photo(s)  
Photo 2 of 4



Photo(s)  
Photo 3 of 4



Photo(s)  
Photo 4 of 4





**Pin Number:** 0021:28  
**Company:** Element Passive Fire Protection Ltd  
  
**Created By:** Costel Arsene - 28  
**Template:** Door Maintenance

**Date Added:** 29/10/2024 - 11:51  
**Location:** South Hampstead High School / South Hampstead High School - All Floors / South Hampstead High School - All Floors / EL1171 - South Hampstead High School - All Floors  
**Status:** Action required

<b>Door Label</b>	
<b>Floor /Level:</b>	Lg
<b>Door Reference:</b>	Storage room
<b>Current FR:</b>	30
<b>Required FR:</b>	30
<b>Has the fire door got a third party fire door scheme label or plug fitted?:</b>	No
<b>Can you confirm that the door is in fact a fire door and has been proven as such?:</b>	Nominal fd30
<b>Door type</b>	
<b>Door set type:</b>	Single Leaf - Single Action
<b>Door Aesthetics :</b>	Painted
<b>Architrave type:</b>	Bullnose
<b>Door leaf handing:</b>	Right-handed
<b>Door set condition</b>	
<b>Is the door set free from damage?:</b>	Yes
<b>Maintenance or no action?:</b>	Maintenance
<b>Door Leaf</b>	
<b>Does the door leaf sit against the door stop and is it free from distortion?:</b>	Yes
<b>If the door is veneered or lipped, is the glue still holding these products firmly in place?:</b>	Yes
<b>Is the door leaf free from damage affecting its fire integrity?:</b>	Yes
<b>Does the door have the correct signage?:</b>	No
<b>Door Frame</b>	
<b>Is the door frame firmly attached to the wall?:</b>	Yes
<b>If a planted door stop is present, is it firmly attached?:</b>	Yes
<b>Are the frame to door leaf gaps in line with the manufacturers installation instructions/testing? :</b>	Yes
<b>Is the door frame free from damage affecting its fire integrity?:</b>	Yes
<b>Is there a consistent gap under the door that allows it to swing without touching floor covering?:</b>	Yes
<b>Is the door to floor covering gap in line with the manufacturer's installation instructions / testing?:</b>	Yes
<b>Intumescent/Smoke/Acoust Seals</b>	
<b>Are intumescent seals in place?:</b>	No
<b>Hinges</b>	
<b>Is there a minimum of three hinges with all of the screws fitted?:</b>	No
<b>Are all the ironmongery screws secure and the correct size?:</b>	Yes
<b>Are the hinges free of metal fragment and oil leakage, which show signs of wear?:</b>	Yes
<b>Are intumescent packers installed behind hinge?:</b>	Unable to Verify
<b>Is all the ironmongery marked with CE stamp or BSEN 1935 grade 13 (or international equivalent)?:</b>	No
<b>Is all ironmongery free from damage and operating correctly?:</b>	Yes
<b>Door Closers</b>	
<b>Does the door have a closer?:</b>	No
<b>Hold Open Devices</b>	

Does the door have an electronically powered hold open device?:	No
<b>Lock And Latch</b>	
Does the door have a lock and/or latch? :	No
<b>Glazing And Glass</b>	
Does the door leaf contain a vision panel(s)?:	No
<b>Side And Overpanels</b>	
Are there side and overpanels installed?:	Yes
Panel Type:	Glass
Is the intumescent seal continuous and attached to the glass and bead?:	Yes
Are the glazing beads correctly attached to the frame from both sides and free from damage?:	Yes
Is the glass free from damage and cracking?:	Yes
Is the Glass identified as fire rated?:	Yes
If glazing panels are below 1500mm from bottom of door, is the glass safety glass?:	N/A
<b>Maintenance Remedial Works Required</b>	
Door gaps:	Ease and Adjustment
Door seals:	15mm intumescent/brush seals
Ironmongery:	3x Grade 13 hinges
Other:	FDKL
<b>Summary</b>	
<b>Summary / Recommendations:</b>	
Ease and adjustment	
Rebate and install 15mm intumescent brush strips	
3x grade 13 hinges	
1x FDKL fixed signage	
<b>Priority</b>	
Priority:	2



Photo(s)  
Photo 1 of 3



Photo(s)  
Photo 2 of 3



Photo(s)  
Photo 3 of 3



**Pin Number:** 0022:28  
**Company:** Element Passive Fire Protection Ltd  
  
**Created By:** Costel Arsene - 28  
**Template:** Door Maintenance

**Date Added:** 29/10/2024 - 11:55  
**Location:** South Hampstead High School / South Hampstead High School - All Floors / South Hampstead High School - All Floors / EL1171 - South Hampstead High School - All Floors  
**Status:** Action required

<b>Door Label</b>	
<b>Floor /Level:</b>	Lg
<b>Door Reference:</b>	First aid
<b>Current FR:</b>	30
<b>Required FR:</b>	30
<b>Has the fire door got a third party fire door scheme label or plug fitted?:</b>	No
<b>Can you confirm that the door is in fact a fire door and has been proven as such?:</b>	Nominal fd30
<b>Door type</b>	
<b>Door set type:</b>	Single Leaf - Single Action
<b>Door Aesthetics :</b>	Oak Veneer
<b>Architrave type:</b>	Bullnose
<b>Door leaf handing:</b>	Left-handed
<b>Door set condition</b>	
<b>Is the door set free from damage?:</b>	Yes
<b>Maintenance or no action?:</b>	Maintenance
<b>Door Leaf</b>	
<b>Does the door leaf sit against the door stop and is it free from distortion?:</b>	Yes
<b>If the door is veneered or lipped, is the glue still holding these products firmly in place?:</b>	Yes
<b>Is the door leaf free from damage affecting its fire integrity?:</b>	Yes
<b>Does the door have the correct signage?:</b>	No
<b>Door Frame</b>	
<b>Is the door frame firmly attached to the wall?:</b>	Yes
<b>If a planted door stop is present, is it firmly attached?:</b>	Yes
<b>Are the frame to door leaf gaps in line with the manufacturers installation instructions/testing? :</b>	Yes
<b>Is the door frame free from damage affecting its fire integrity?:</b>	Yes
<b>Is there a consistent gap under the door that allows it to swing without touching floor covering?:</b>	Yes
<b>Is the door to floor covering gap in line with the manufacturer's installation instructions / testing?:</b>	No
<b>Intumescent/Smoke/Acoust Seals</b>	
<b>Are intumescent seals in place?:</b>	Yes
<b>Are the seals free from damage?:</b>	No
<b>Are the smoke seals free from paint or varnish?:</b>	Yes
<b>Are the seals well attached inside the groove in the frame or door leaf?:</b>	Yes
<b>Are the seals continuous around the frame or door leaf?:</b>	Yes
<b>Is the smoke seal in full contact with the door giving an effective seal?:</b>	No
<b>Hinges</b>	
<b>Is there a minimum of three hinges with all of the screws fitted?:</b>	Yes
<b>Are all the ironmongery screws secure and the correct size?:</b>	No
<b>Are the hinges free of metal fragment and oil leakage, which show signs of wear?:</b>	Yes
<b>Are intumescent packers installed behind hinge?:</b>	Unable to Verify

Is all the ironmongery marked with CE stamp or BSEN 1935 grade 13 (or international equivalent)?:	Yes
Is all ironmongery free from damage and operating correctly?:	Yes
<b>Door Closers</b>	
Does the door have a closer?:	Yes
Open the door to 5 degrees or 75mm. Does it close and engage with the latch?:	Yes
Is the closer correctly attached to the door and frame?:	Yes
Is the closer free from damage and not leaking?:	Yes
If unlatched, does the closer hold the door in line with the frame and intumescent seal?:	Yes
If hung in pairs, do they close in line if both opened and released together? (optional):	N/A
Does the door close within the specified time required?:	Yes
<b>Hold Open Devices</b>	
Does the door have an electronically powered hold open device?:	Yes
Does the hold open device release the door when required?:	Yes
<b>Lock And Latch</b>	
Does the door have a lock and/or latch? :	Yes
Does the latch hold the door firmly in place without rattling?:	No
<b>Glazing And Glass</b>	
Does the door leaf contain a vision panel(s)?:	Yes
Is the intumescent seal continuous and attached to the glass and bead?:	Yes
Are the glazing beads correctly attached to the frame from both sides and free from damage?:	Yes
Is the glass free from damage and cracking?:	Yes
Is the glass identified as fire rated?:	Yes
If glazing panels are below 1500mm from bottom of door, is the glass safety glass?:	N/A
<b>Side And Overpanels</b>	
Are there side and overpanels installed?:	No
<b>Maintenance Remedial Works Required</b>	
Door gaps:	Ease and Adjustment
Door seals:	15mm intumescent/brush seals
Ironmongery:	Replacement screws
Other:	AFDCK
<b>Summary</b>	
<b>Summary / Recomendations:</b>	
Ease and adjustment	
Screws missing from hinges	
20mm intumescent brush strips	
Escutcheon	
2x AFDCK fixed signage	
<b>Priority</b>	
Priority:	2



Photo(s)  
Photo 1 of 4



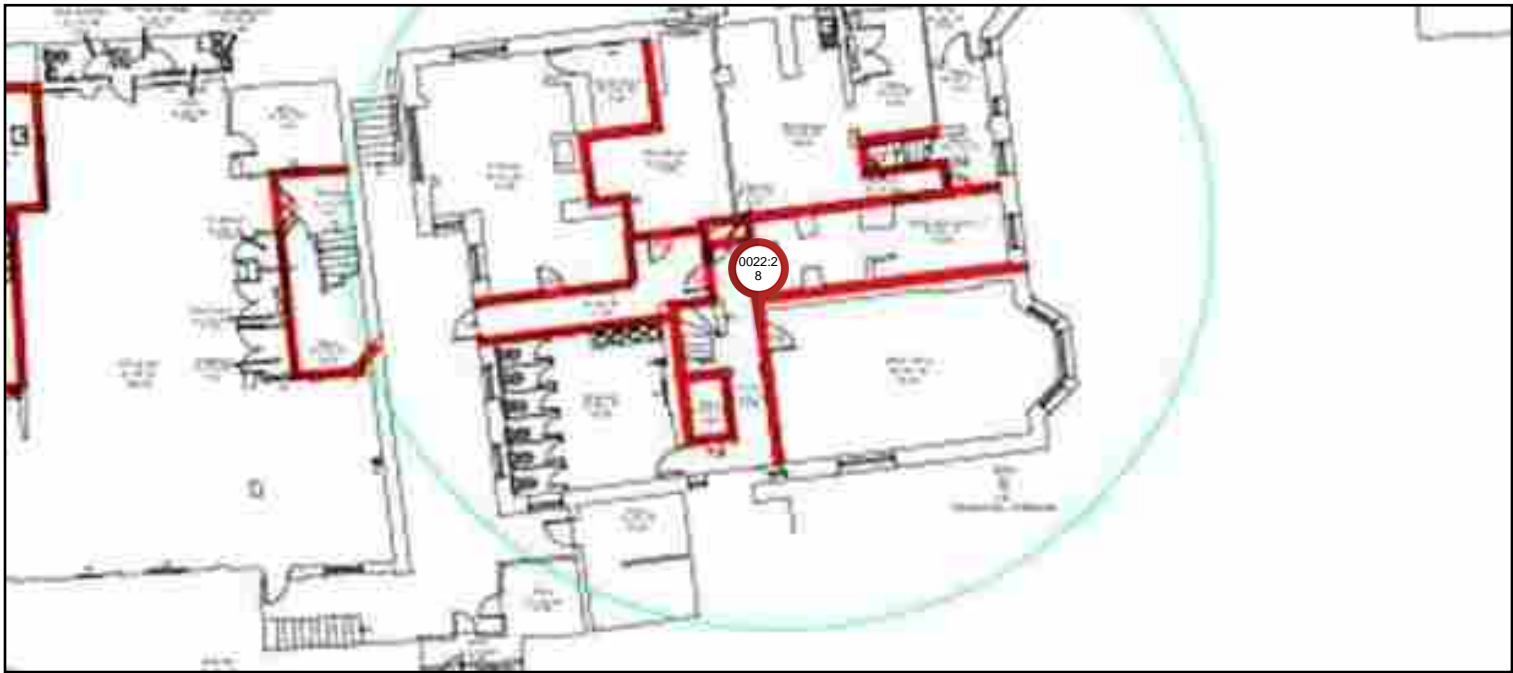
Photo(s)  
Photo 2 of 4



Photo(s)  
Photo 3 of 4



Photo(s)  
Photo 4 of 4



**Pin Number:** 0023:28  
**Company:** Element Passive Fire Protection Ltd  
  
**Created By:** Costel Arsene - 28  
**Template:** Door Maintenance

**Date Added:** 29/10/2024 - 11:57  
**Location:** South Hampstead High School / South Hampstead High School - All Floors / South Hampstead High School - All Floors / EL1171 - South Hampstead High School - All Floors  
**Status:** No action

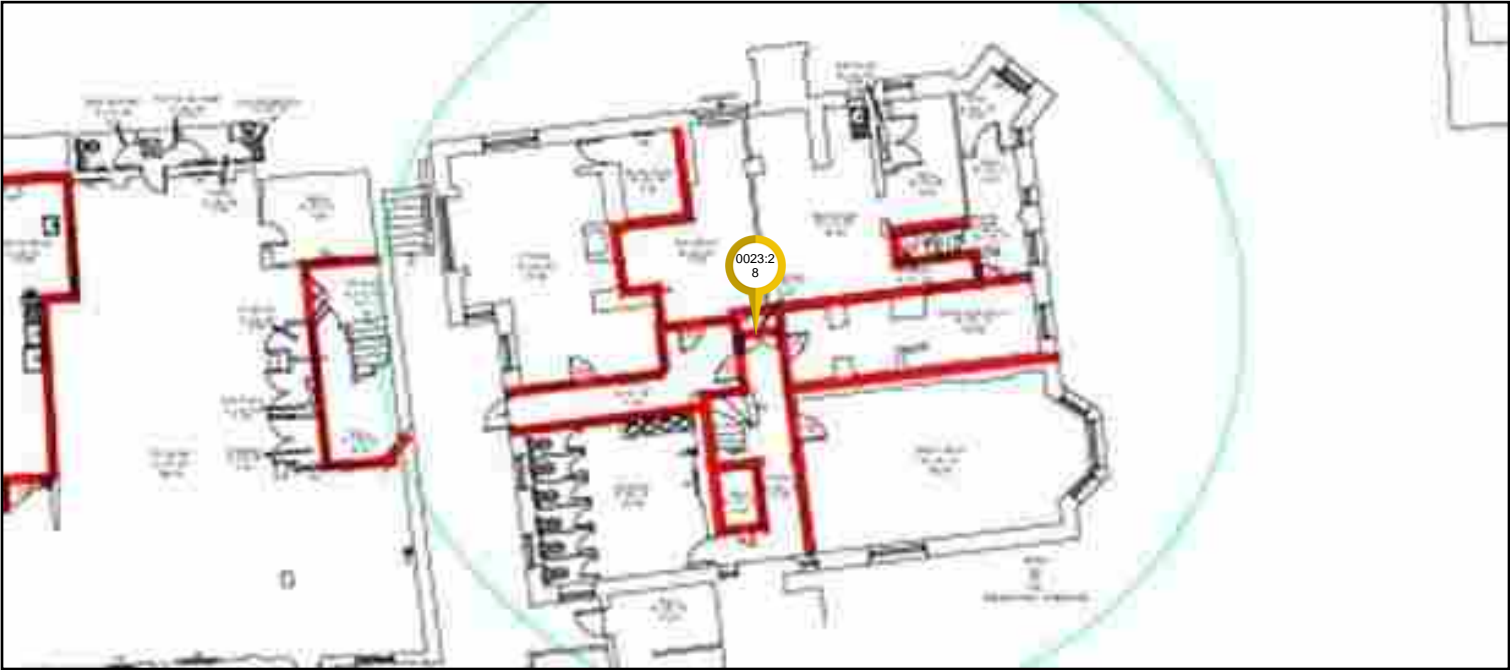
<b>Door Label</b>	
<b>Floor /Level:</b>	Lg
<b>Door Reference:</b>	Riser
<b>Current FR:</b>	30
<b>Required FR:</b>	30
<b>Has the fire door got a third party fire door scheme label or plug fitted?:</b>	No
<b>Can you confirm that the door is in fact a fire door and has been proven as such?:</b>	Nominal fd30
<b>Door type</b>	
<b>Door set type:</b>	Double Leaf - Single Action
<b>Door Aesthetics :</b>	Painted
<b>Architrave type:</b>	Bullnose
<b>Door leaf handing:</b>	Double door
<b>Door set condition</b>	
<b>Is the door set free from damage?:</b>	Yes
<b>Maintenance or no action?:</b>	No action
<b>Door Leaf</b>	
<b>Does the door leaf sit against the door stop and is it free from distortion?:</b>	N/A
<b>If the door is veneered or lipped, is the glue still holding these products firmly in place?:</b>	N/A
<b>Is the door leaf free from damage affecting its fire integrity?:</b>	N/A
<b>Does the door have the correct signage?:</b>	N/A
<b>Door Frame</b>	
<b>Is the door frame firmly attached to the wall?:</b>	N/A
<b>If a planted door stop is present, is it firmly attached?:</b>	N/A
<b>Are the frame to door leaf gaps in line with the manufacturers installation instructions/testing? :</b>	N/A
<b>Is the door frame free from damage affecting its fire integrity?:</b>	N/A
<b>Is there a consistent gap under the door that allows it to swing without touching floor covering?:</b>	N/A
<b>Is the door to floor covering gap in line with the manufacturer's installation instructions / testing?:</b>	N/A
<b>Intumescent/Smoke/Acoust Seals</b>	
<b>Are intumescent seals in place?:</b>	N/A
<b>Hinges</b>	
<b>Is there a minimum of three hinges with all of the screws fitted?:</b>	N/A
<b>Are all the ironmongery screws secure and the correct size?:</b>	N/A
<b>Are the hinges free of metal fragment and oil leakage, which show signs of wear?:</b>	N/A
<b>Are intumescent packers installed behind hinge?:</b>	N/A
<b>Is all the ironmongery marked with CE stamp or BSEN 1935 grade 13 (or international equivalent)?:</b>	N/A
<b>Is all ironmongery free from damage and operating correctly?:</b>	N/A
<b>Door Closers</b>	
<b>Does the door have a closer?:</b>	N/A
<b>Hold Open Devices</b>	



Does the door have an electronically powered hold open device?:	N/A
Lock And Latch	
Does the door have a lock and/or latch? :	N/A
Glazing And Glass	
Does the door leaf contain a vision panel(s)?:	N/A
Side And Overpanels	
Are there side and overpanels installed?:	N/A
Summary	
Summary / Recomendations:	
No access during the time of survey	



Photo(s)  
Photo 1 of 1



**Pin Number:** 0024:28  
**Company:** Element Passive Fire Protection Ltd  
  
**Created By:** Costel Arsene - 28  
**Template:** Door Maintenance

**Date Added:** 29/10/2024 - 12:00  
**Location:** South Hampstead High School / South Hampstead High School - All Floors / South Hampstead High School - All Floors / EL1171 - South Hampstead High School - All Floors  
**Status:** Action required

<b>Door Label</b>	
<b>Floor /Level:</b>	Lg
<b>Door Reference:</b>	Lockers room
<b>Current FR:</b>	30
<b>Required FR:</b>	30
<b>Has the fire door got a third party fire door scheme label or plug fitted?:</b>	No
<b>Can you confirm that the door is in fact a fire door and has been proven as such?:</b>	Nominal fd30
<b>Door type</b>	
<b>Door set type:</b>	Single Leaf - Single Action
<b>Door Aesthetics :</b>	Oak Veneer
<b>Architrave type:</b>	Bullnose
<b>Door leaf handing:</b>	Right-handed
<b>Door set condition</b>	
<b>Is the door set free from damage?:</b>	Yes
<b>Maintenance or no action?:</b>	Maintenance
<b>Door Leaf</b>	
<b>Does the door leaf sit against the door stop and is it free from distortion?:</b>	Yes
<b>If the door is veneered or lipped, is the glue still holding these products firmly in place?:</b>	Yes
<b>Is the door leaf free from damage affecting its fire integrity?:</b>	Yes
<b>Does the door have the correct signage?:</b>	No
<b>Door Frame</b>	
<b>Is the door frame firmly attached to the wall?:</b>	Yes
<b>If a planted door stop is present, is it firmly attached?:</b>	Yes
<b>Are the frame to door leaf gaps in line with the manufacturers installation instructions/testing? :</b>	Yes
<b>Is the door frame free from damage affecting its fire integrity?:</b>	Yes
<b>Is there a consistent gap under the door that allows it to swing without touching floor covering?:</b>	Yes
<b>Is the door to floor covering gap in line with the manufacturer's installation instructions / testing?:</b>	No
<b>Threshold Gap:</b>	15
<b>Intumescent/Smoke/Acoust Seals</b>	
<b>Are intumescent seals in place?:</b>	Yes
<b>Are the seals free from damage?:</b>	No
<b>Are the smoke seals free from paint or varnish?:</b>	No
<b>Are the seals well attached inside the groove in the frame or door leaf?:</b>	Yes
<b>Are the seals continuous around the frame or door leaf?:</b>	Yes
<b>Is the smoke seal in full contact with the door giving an effective seal?:</b>	No
<b>Hinges</b>	
<b>Is there a minimum of three hinges with all of the screws fitted?:</b>	Yes
<b>Are all the ironmongery screws secure and the correct size?:</b>	Yes
<b>Are the hinges free of metal fragment and oil leakage, which show signs of wear?:</b>	No

Are intumescent packers installed behind hinge?:	Unable to Verify
Is all the ironmongery marked with CE stamp or BSEN 1935 grade 13 (or international equivalent)?:	Yes
Is all ironmongery free from damage and operating correctly?:	Yes
<b>Door Closers</b>	
Does the door have a closer?:	Yes
Open the door to 5 degrees or 75mm. Does it close and engage with the latch?:	Yes
Is the closer correctly attached to the door and frame?:	Yes
Is the closer free from damage and not leaking?:	Yes
If unlatched, does the closer hold the door in line with the frame and intumescent seal?:	Yes
If hung in pairs, do they close in line if both opened and released together? (optional):	N/A
Does the door close within the specified time required?:	Yes
<b>Hold Open Devices</b>	
Does the door have an electronically powered hold open device?:	No
<b>Lock And Latch</b>	
Does the door have a lock and/or latch? :	Yes
Does the latch hold the door firmly in place without rattling?:	Yes
<b>Glazing And Glass</b>	
Does the door leaf contain a vision panel(s)?:	Yes
Is the intumescent seal continuous and attached to the glass and bead?:	Yes
Are the glazing beads correctly attached to the frame from both sides and free from damage?:	Yes
Is the glass free from damage and cracking?:	Yes
Is the glass identified as fire rated?:	Yes
If glazing panels are below 1500mm from bottom of door, is the glass safety glass?:	N/A
<b>Side And Overpanels</b>	
Are there side and overpanels installed?:	No
<b>Maintenance Remedial Works Required</b>	
Door gaps:	Ease and Adjustment, Install face-mounted drop-down seal
Door seals:	15mm intumescent/brush seals
Ironmongery:	3x Grade 13 hinges
Other:	FDKS
<b>Summary</b>	
<b>Summary / Recommendations:</b>	
Ease and adjustment	
3x grade 13 hinges	
20mm intumescent brush strips	
2x FDKS fixed signage	
Face mounted drop down seal ( leaf 810mm)	
<b>Priority</b>	
Priority:	2



Photo(s)  
Photo 1 of 4



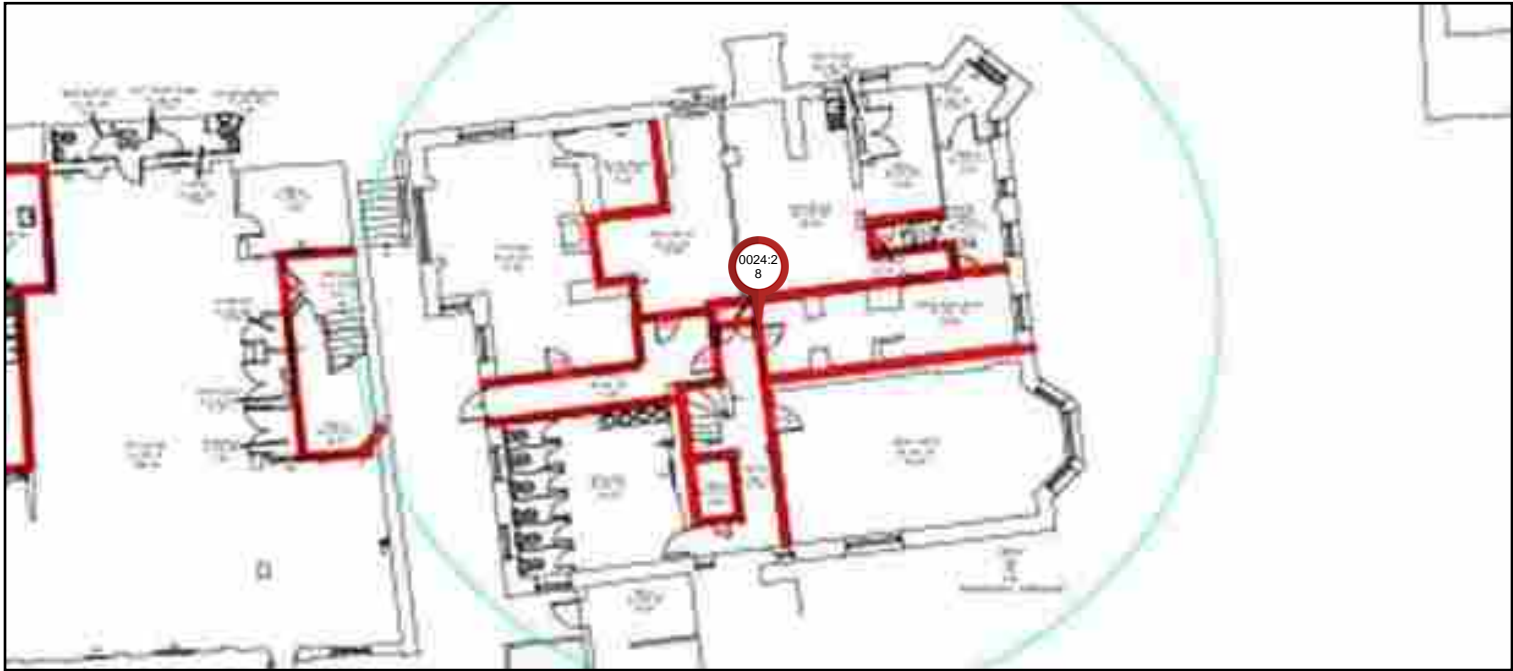
Photo(s)  
Photo 2 of 4



Photo(s)  
Photo 3 of 4



Photo(s)  
Photo 4 of 4



**Pin Number:** 0025:28

**Company:** Element Passive Fire Protection Ltd

**Created By:** Costel Arsene - 28

**Template:** Door Maintenance

**Date Added:** 29/10/2024 - 12:02

**Location:** South Hampstead High School / South Hampstead High School - All Floors / South Hampstead High School - All Floors / EL1171 - South Hampstead High School - All Floors

**Status:** No action

<b>Door Label</b>	
<b>Floor /Level:</b>	Lg
<b>Door Reference:</b>	Entrance to staircase from locker room
<b>Current FR:</b>	30
<b>Required FR:</b>	30
<b>Has the fire door got a third party fire door scheme label or plug fitted?:</b>	No
<b>Can you confirm that the door is in fact a fire door and has been proven as such?:</b>	Nominal fd30
<b>Door type</b>	
<b>Door set type:</b>	Single Leaf - Single Action
<b>Door Aesthetics :</b>	Painted
<b>Architrave type:</b>	Bullnose
<b>Door leaf handing:</b>	Right-handed
<b>Door set condition</b>	
<b>Is the door set free from damage?:</b>	Yes
<b>Maintenance or no action?:</b>	No action
<b>Door Leaf</b>	
<b>Does the door leaf sit against the door stop and is it free from distortion?:</b>	N/A
<b>If the door is veneered or lipped, is the glue still holding these products firmly in place?:</b>	N/A
<b>Is the door leaf free from damage affecting its fire integrity?:</b>	N/A
<b>Does the door have the correct signage?:</b>	N/A
<b>Door Frame</b>	
<b>Is the door frame firmly attached to the wall?:</b>	N/A
<b>If a planted door stop is present, is it firmly attached?:</b>	N/A
<b>Are the frame to door leaf gaps in line with the manufacturers installation instructions/testing? :</b>	N/A
<b>Is the door frame free from damage affecting its fire integrity?:</b>	N/A
<b>Is there a consistent gap under the door that allows it to swing without touching floor covering?:</b>	N/A
<b>Is the door to floor covering gap in line with the manufacturer's installation instructions / testing?:</b>	N/A
<b>Intumescent/Smoke/Acoust Seals</b>	
<b>Are intumescent seals in place?:</b>	N/A
<b>Hinges</b>	
<b>Is there a minimum of three hinges with all of the screws fitted?:</b>	N/A
<b>Are all the ironmongery screws secure and the correct size?:</b>	N/A
<b>Are the hinges free of metal fragment and oil leakage, which show signs of wear?:</b>	N/A
<b>Are intumescent packers installed behind hinge?:</b>	N/A
<b>Is all the ironmongery marked with CE stamp or BSEN 1935 grade 13 (or international equivalent)?:</b>	N/A
<b>Is all ironmongery free from damage and operating correctly?:</b>	N/A
<b>Door Closers</b>	
<b>Does the door have a closer?:</b>	N/A
<b>Hold Open Devices</b>	

Does the door have an electronically powered hold open device?:	N/A
Lock And Latch	
Does the door have a lock and/or latch? :	N/A
Glazing And Glass	
Does the door leaf contain a vision panel(s)?:	N/A
Side And Overpanels	
Are there side and overpanels installed?:	N/A
Summary	
Summary / Recomendations:	
No access during the time of survey	
No keys provided	



Photo(s)  
Photo 1 of 1



**Pin Number:** 0026:28

**Company:** Element Passive Fire Protection Ltd

**Created By:** Costel Arsene - 28

**Template:** Door Maintenance

**Date Added:** 29/10/2024 - 12:04

**Location:** South Hampstead High School / South Hampstead High School - All Floors / South Hampstead High School - All Floors / EL1171 - South Hampstead High School - All Floors

**Status:** No action

<b>Door Label</b>	
<b>Floor /Level:</b>	Lg
<b>Door Reference:</b>	Plant room
<b>Current FR:</b>	30
<b>Required FR:</b>	30
<b>Has the fire door got a third party fire door scheme label or plug fitted?:</b>	No
<b>Can you confirm that the door is in fact a fire door and has been proven as such?:</b>	Nominal fd30
<b>Door type</b>	
<b>Door set type:</b>	Single Leaf - Single Action
<b>Door Aesthetics :</b>	Oak Veneer
<b>Architrave type:</b>	Bullnose
<b>Door leaf handing:</b>	Left-handed
<b>Door set condition</b>	
<b>Is the door set free from damage?:</b>	Yes
<b>Maintenance or no action?:</b>	No action
<b>Door Leaf</b>	
<b>Does the door leaf sit against the door stop and is it free from distortion?:</b>	N/A
<b>If the door is veneered or lipped, is the glue still holding these products firmly in place?:</b>	N/A
<b>Is the door leaf free from damage affecting its fire integrity?:</b>	N/A
<b>Does the door have the correct signage?:</b>	N/A
<b>Door Frame</b>	
<b>Is the door frame firmly attached to the wall?:</b>	N/A
<b>If a planted door stop is present, is it firmly attached?:</b>	N/A
<b>Are the frame to door leaf gaps in line with the manufacturers installation instructions/testing? :</b>	N/A
<b>Is the door frame free from damage affecting its fire integrity?:</b>	N/A
<b>Is there a consistent gap under the door that allows it to swing without touching floor covering?:</b>	N/A
<b>Is the door to floor covering gap in line with the manufacturer's installation instructions / testing?:</b>	N/A
<b>Intumescent/Smoke/Acoust Seals</b>	
<b>Are intumescent seals in place?:</b>	N/A
<b>Hinges</b>	
<b>Is there a minimum of three hinges with all of the screws fitted?:</b>	N/A
<b>Are all the ironmongery screws secure and the correct size?:</b>	N/A
<b>Are the hinges free of metal fragment and oil leakage, which show signs of wear?:</b>	N/A
<b>Are intumescent packers installed behind hinge?:</b>	N/A
<b>Is all the ironmongery marked with CE stamp or BSEN 1935 grade 13 (or international equivalent)?:</b>	N/A
<b>Is all ironmongery free from damage and operating correctly?:</b>	N/A
<b>Door Closers</b>	
<b>Does the door have a closer?:</b>	N/A
<b>Hold Open Devices</b>	



Does the door have an electronically powered hold open device?:	N/A
Lock And Latch	
Does the door have a lock and/or latch? :	N/A
Glazing And Glass	
Does the door leaf contain a vision panel(s)?:	N/A
Side And Overpanels	
Are there side and overpanels installed?:	N/A
Summary	
Summary / Recomendations:	
No access during the time of survey	
No keys provided	



Photo(s)  
Photo 1 of 1





**Pin Number:** 0027:28  
**Company:** Element Passive Fire Protection Ltd  
  
**Created By:** Costel Arsene - 28  
**Template:** Door Maintenance

**Date Added:** 29/10/2024 - 12:07  
**Location:** South Hampstead High School / South Hampstead High School - All Floors / South Hampstead High School - All Floors / EL1171 - South Hampstead High School - All Floors  
**Status:** Action required

<b>Door Label</b>	
<b>Floor /Level:</b>	Lg
<b>Door Reference:</b>	0101
<b>Current FR:</b>	30
<b>Required FR:</b>	30
<b>Has the fire door got a third party fire door scheme label or plug fitted?:</b>	No
<b>Can you confirm that the door is in fact a fire door and has been proven as such?:</b>	Nominal fd30
<b>Door type</b>	
<b>Door set type:</b>	Single Leaf - Single Action
<b>Door Aesthetics :</b>	Oak Veneer
<b>Architrave type:</b>	Bullnose
<b>Door leaf handing:</b>	Right-handed
<b>Door set condition</b>	
<b>Is the door set free from damage?:</b>	Yes
<b>Maintenance or no action?:</b>	Maintenance
<b>Door Leaf</b>	
<b>Does the door leaf sit against the door stop and is it free from distortion?:</b>	Yes
<b>If the door is veneered or lipped, is the glue still holding these products firmly in place?:</b>	Yes
<b>Is the door leaf free from damage affecting its fire integrity?:</b>	Yes
<b>Does the door have the correct signage?:</b>	No
<b>Door Frame</b>	
<b>Is the door frame firmly attached to the wall?:</b>	Yes
<b>If a planted door stop is present, is it firmly attached?:</b>	Yes
<b>Are the frame to door leaf gaps in line with the manufacturers installation instructions/testing? :</b>	Yes
<b>Is the door frame free from damage affecting its fire integrity?:</b>	Yes
<b>Is there a consistent gap under the door that allows it to swing without touching floor covering?:</b>	Yes
<b>Is the door to floor covering gap in line with the manufacturer's installation instructions / testing?:</b>	No
<b>Intumescent/Smoke/Acoust Seals</b>	
<b>Are intumescent seals in place?:</b>	Yes
<b>Are the seals free from damage?:</b>	No
<b>Are the smoke seals free from paint or varnish?:</b>	No
<b>Are the seals well attached inside the groove in the frame or door leaf?:</b>	Yes
<b>Are the seals continuous around the frame or door leaf?:</b>	Yes
<b>Is the smoke seal in full contact with the door giving an effective seal?:</b>	No
<b>Hinges</b>	
<b>Is there a minimum of three hinges with all of the screws fitted?:</b>	Yes
<b>Are all the ironmongery screws secure and the correct size?:</b>	Yes
<b>Are the hinges free of metal fragment and oil leakage, which show signs of wear?:</b>	No
<b>Are intumescent packers installed behind hinge?:</b>	Unable to Verify

Is all the ironmongery marked with CE stamp or BSEN 1935 grade 13 (or international equivalent)?:	Yes
Is all ironmongery free from damage and operating correctly?:	No
<b>Door Closers</b>	
Does the door have a closer?:	Yes
Open the door to 5 degrees or 75mm. Does it close and engage with the latch?:	No
Is the closer correctly attached to the door and frame?:	Yes
Is the closer free from damage and not leaking?:	Yes
If unlatched, does the closer hold the door in line with the frame and intumescent seal?:	Yes
If hung in pairs, do they close in line if both opened and released together? (optional):	N/A
Does the door close within the specified time required?:	No
<b>Hold Open Devices</b>	
Does the door have an electronically powered hold open device?:	No
<b>Lock And Latch</b>	
Does the door have a lock and/or latch? :	Yes
Does the latch hold the door firmly in place without rattling?:	Yes
<b>Glazing And Glass</b>	
Does the door leaf contain a vision panel(s)?:	Yes
Is the intumescent seal continuous and attached to the glass and bead?:	Yes
Are the glazing beads correctly attached to the frame from both sides and free from damage?:	Yes
Is the glass free from damage and cracking?:	Yes
Is the glass identified as fire rated?:	Yes
If glazing panels are below 1500mm from bottom of door, is the glass safety glass?:	N/A
<b>Side And Overpanels</b>	
Are there side and overpanels installed?:	No
<b>Maintenance Remedial Works Required</b>	
Door gaps:	Ease and Adjustment
Door seals:	15mm intumescent/brush seals
Ironmongery:	3x Grade 13 hinges, Closer replacement/installation
Other:	FDKS
<b>Summary</b>	
<b>Summary / Recommendations:</b>	
Ease and adjustment	
20mm intumescent brush strips	
3x grade 13 hinges	
2x FDKS fixed signage	
<b>Priority</b>	
Priority:	2



Photo(s)  
Photo 1 of 4



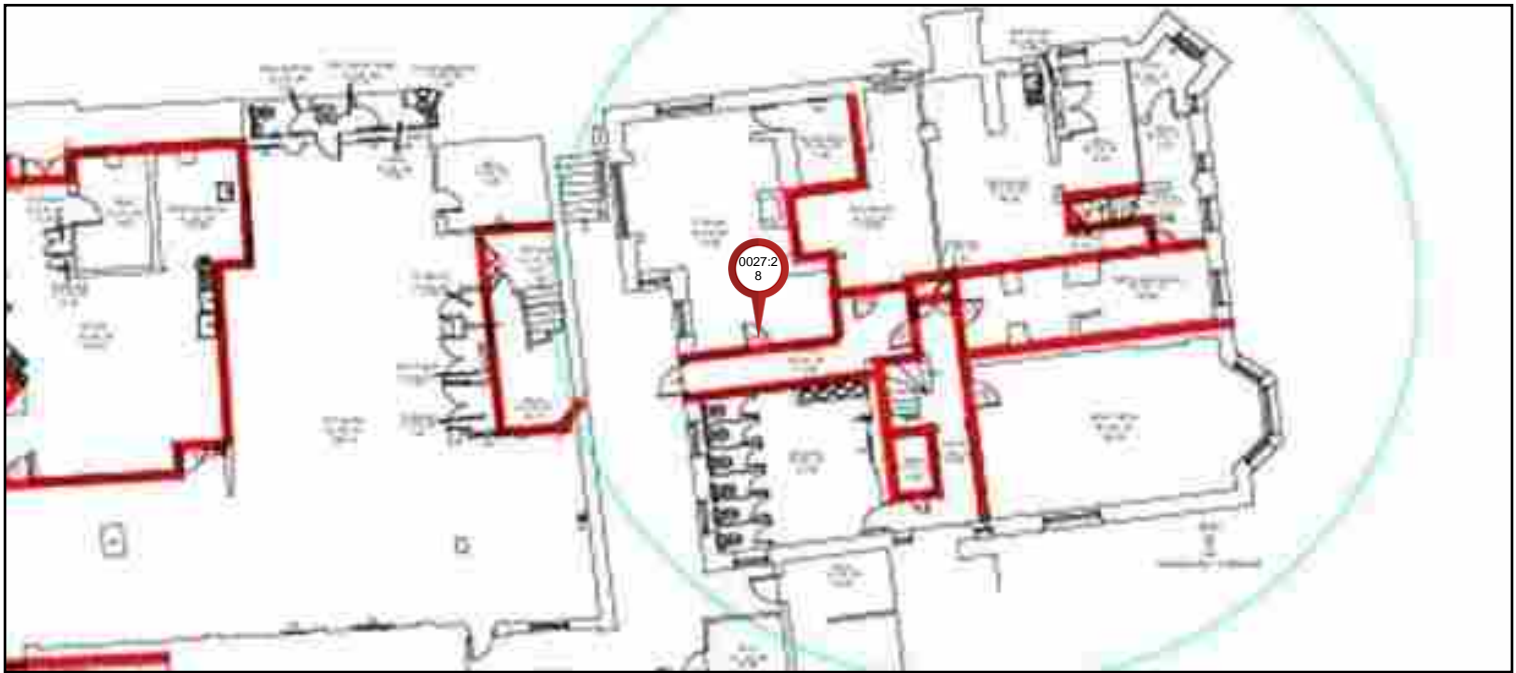
Photo(s)  
Photo 2 of 4



Photo(s)  
Photo 3 of 4



Photo(s)  
Photo 4 of 4



**Pin Number:** 0028:28  
**Company:** Element Passive Fire Protection Ltd  
  
**Created By:** Costel Arsene - 28  
**Template:** Door Maintenance

**Date Added:** 29/10/2024 - 12:11  
**Location:** South Hampstead High School / South Hampstead High School - All Floors / South Hampstead High School - All Floors / EL1171 - South Hampstead High School - All Floors  
**Status:** Action required

<b>Door Label</b>	
<b>Floor /Level:</b>	Lg
<b>Door Reference:</b>	Cross corridor
<b>Current FR:</b>	30s
<b>Required FR:</b>	30s
<b>Has the fire door got a third party fire door scheme label or plug fitted?:</b>	No
<b>Can you confirm that the door is in fact a fire door and has been proven as such?:</b>	Nominal fd30s
<b>Door type</b>	
<b>Door set type:</b>	Unequal Pair Leaf - Single Action
<b>Door Aesthetics :</b>	Oak Veneer
<b>Architrave type:</b>	Bullnose
<b>Door leaf handing:</b>	Double door
<b>Door set condition</b>	
<b>Is the door set free from damage?:</b>	Yes
<b>Maintenance or no action?:</b>	Maintenance
<b>Door Leaf</b>	
<b>Does the door leaf sit against the door stop and is it free from distortion?:</b>	Yes
<b>If the door is veneered or lipped, is the glue still holding these products firmly in place?:</b>	Yes
<b>Is the door leaf free from damage affecting its fire integrity?:</b>	Yes
<b>Does the door have the correct signage?:</b>	No
<b>Door Frame</b>	
<b>Is the door frame firmly attached to the wall?:</b>	Yes
<b>If a planted door stop is present, is it firmly attached?:</b>	Yes
<b>Are the frame to door leaf gaps in line with the manufacturers installation instructions/testing? :</b>	Yes
<b>Is the door frame free from damage affecting its fire integrity?:</b>	Yes
<b>Is there a consistent gap under the door that allows it to swing without touching floor covering?:</b>	Yes
<b>Is the door to floor covering gap in line with the manufacturer's installation instructions / testing?:</b>	Yes
<b>Intumescent/Smoke/Acoust Seals</b>	
<b>Are intumescent seals in place?:</b>	Yes
<b>Are the seals free from damage?:</b>	No
<b>Are the smoke seals free from paint or varnish?:</b>	Yes
<b>Are the seals well attached inside the groove in the frame or door leaf?:</b>	Yes
<b>Are the seals continuous around the frame or door leaf?:</b>	No
<b>Is the smoke seal in full contact with the door giving an effective seal?:</b>	No
<b>Hinges</b>	
<b>Is there a minimum of three hinges with all of the screws fitted?:</b>	Yes
<b>Are all the ironmongery screws secure and the correct size?:</b>	Yes
<b>Are the hinges free of metal fragment and oil leakage, which show signs of wear?:</b>	No
<b>Are intumescent packers installed behind hinge?:</b>	Unable to Verify

Is all the ironmongery marked with CE stamp or BSEN 1935 grade 13 (or international equivalent)?:	Yes
Is all ironmongery free from damage and operating correctly?:	Yes
<b>Door Closers</b>	
Does the door have a closer?:	Yes
Open the door to 5 degrees or 75mm. Does it close and engage with the latch?:	Yes
Is the closer correctly attached to the door and frame?:	Yes
Is the closer free from damage and not leaking?:	Yes
If unlatched, does the closer hold the door in line with the frame and intumescent seal?:	Yes
If hung in pairs, do they close in line if both opened and released together? (optional):	Yes
Does the door close within the specified time required?:	Yes
<b>Hold Open Devices</b>	
Does the door have an electronically powered hold open device?:	Yes
Does the hold open device release the door when required?:	Yes
<b>Lock And Latch</b>	
Does the door have a lock and/or latch? :	No
<b>Glazing And Glass</b>	
Does the door leaf contain a vision panel(s)?:	Yes
Is the intumescent seal continuous and attached to the glass and bead?:	Yes
Are the glazing beads correctly attached to the frame from both sides and free from damage?:	Yes
Is the glass free from damage and cracking?:	Yes
Is the glass identified as fire rated?:	Yes
If glazing panels are below 1500mm from bottom of door, is the glass safety glass?:	N/A
<b>Side And Overpanels</b>	
Are there side and overpanels installed?:	No
<b>Maintenance Remedial Works Required</b>	
Door seals:	10mm intumescent/brush seals
Ironmongery:	6x Grade 13 hinges
Other:	FDKS
<b>Summary</b>	
<b>Summary / Recommendations:</b>	
10mm intumescent brush strips	
6x grade 13 hinges	
4x FDKS fixed signage	
<b>Priority</b>	
Priority:	2



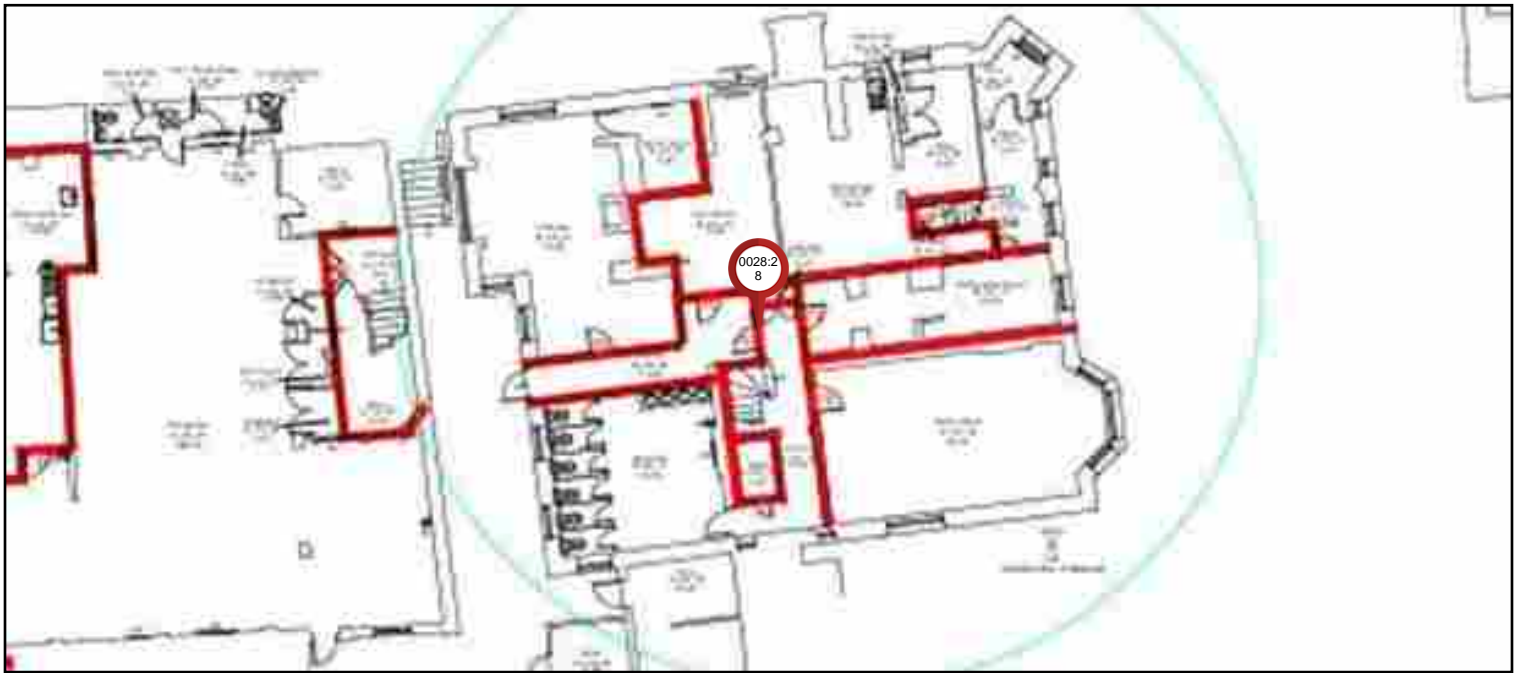
Photo(s)  
Photo 1 of 3



Photo(s)  
Photo 2 of 3



Photo(s)  
Photo 3 of 3





**Pin Number:** 0029:28

**Company:** Element Passive Fire Protection Ltd

**Created By:** Costel Arsene - 28

**Template:** Door Maintenance

**Date Added:** 29/10/2024 - 12:12

**Location:** South Hampstead High School / South Hampstead High School - All Floors / South Hampstead High School - All Floors / EL1171 - South Hampstead High School - All Floors

**Status:** No action

<b>Door Label</b>	
<b>Floor /Level:</b>	Lg
<b>Door Reference:</b>	Staircase
<b>Current FR:</b>	30
<b>Required FR:</b>	30
<b>Has the fire door got a third party fire door scheme label or plug fitted?:</b>	No
<b>Can you confirm that the door is in fact a fire door and has been proven as such?:</b>	Nominal fd30
<b>Door type</b>	
<b>Door set type:</b>	Single Leaf - Single Action
<b>Door Aesthetics :</b>	Painted
<b>Architrave type:</b>	Bullnose
<b>Door leaf handing:</b>	Right-handed
<b>Door set condition</b>	
<b>Is the door set free from damage?:</b>	Yes
<b>Maintenance or no action?:</b>	No action
<b>Door Leaf</b>	
<b>Does the door leaf sit against the door stop and is it free from distortion?:</b>	N/A
<b>If the door is veneered or lipped, is the glue still holding these products firmly in place?:</b>	N/A
<b>Is the door leaf free from damage affecting its fire integrity?:</b>	N/A
<b>Does the door have the correct signage?:</b>	N/A
<b>Door Frame</b>	
<b>Is the door frame firmly attached to the wall?:</b>	N/A
<b>If a planted door stop is present, is it firmly attached?:</b>	N/A
<b>Are the frame to door leaf gaps in line with the manufacturers installation instructions/testing? :</b>	N/A
<b>Is the door frame free from damage affecting its fire integrity?:</b>	N/A
<b>Is there a consistent gap under the door that allows it to swing without touching floor covering?:</b>	N/A
<b>Is the door to floor covering gap in line with the manufacturer's installation instructions / testing?:</b>	N/A
<b>Intumescent/Smoke/Acoust Seals</b>	
<b>Are intumescent seals in place?:</b>	N/A
<b>Hinges</b>	
<b>Is there a minimum of three hinges with all of the screws fitted?:</b>	N/A
<b>Are all the ironmongery screws secure and the correct size?:</b>	N/A
<b>Are the hinges free of metal fragment and oil leakage, which show signs of wear?:</b>	N/A
<b>Are intumescent packers installed behind hinge?:</b>	N/A
<b>Is all the ironmongery marked with CE stamp or BSEN 1935 grade 13 (or international equivalent)?:</b>	N/A
<b>Is all ironmongery free from damage and operating correctly?:</b>	N/A
<b>Door Closers</b>	
<b>Does the door have a closer?:</b>	N/A
<b>Hold Open Devices</b>	

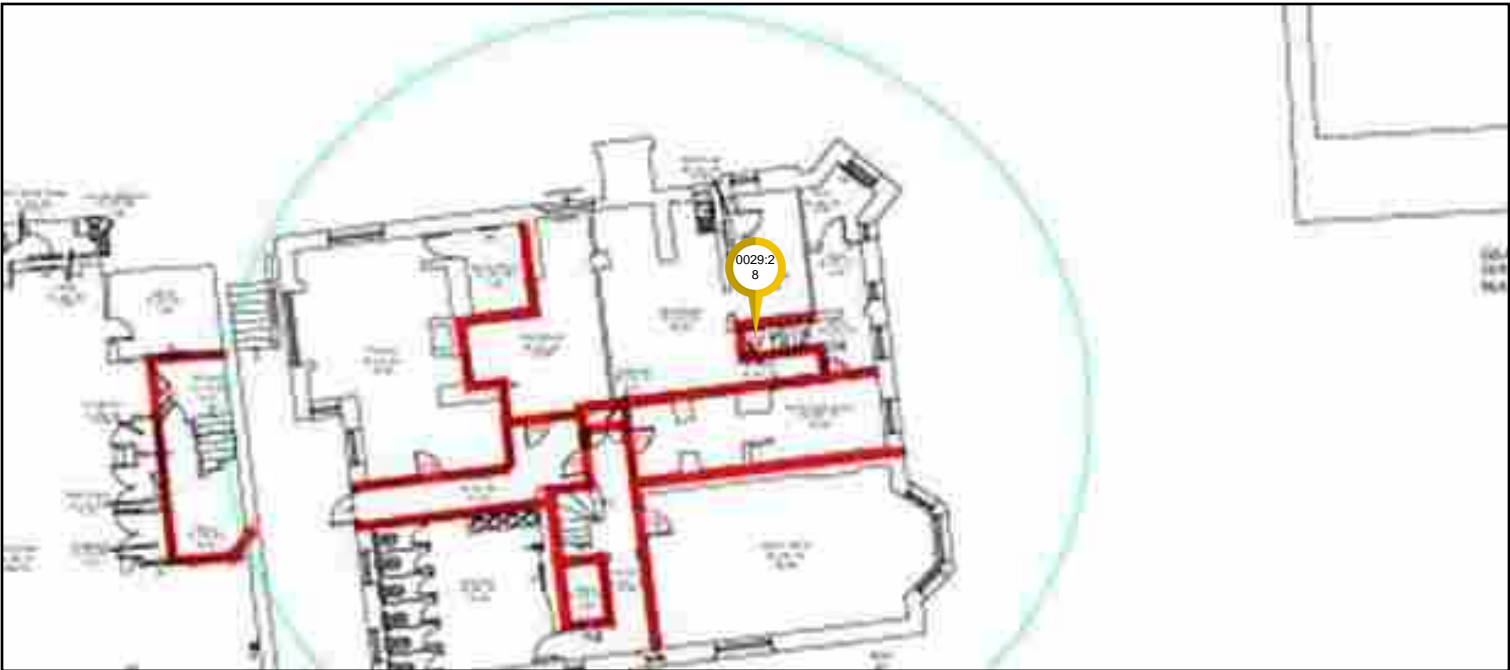
Does the door have an electronically powered hold open device?:	N/A
Lock And Latch	
Does the door have a lock and/or latch? :	N/A
Glazing And Glass	
Does the door leaf contain a vision panel(s)?:	N/A
Side And Overpanels	
Are there side and overpanels installed?:	N/A
Summary	
Summary / Recomendations:	
No access during the time of survey	
No keys provided	
Access from locker room	



Photo(s)  
Photo 1 of 2



Photo(s)  
Photo 2 of 2





**Pin Number:** 0030:28  
**Company:** Element Passive Fire Protection Ltd  
  
**Created By:** Costel Arsene - 28  
**Template:** Door Maintenance

**Date Added:** 29/10/2024 - 12:15  
**Location:** South Hampstead High School / South Hampstead High School - All Floors / South Hampstead High School - All Floors / EL1171 - South Hampstead High School - All Floors  
**Status:** No action

<b>Door Label</b>	
<b>Floor /Level:</b>	G
<b>Door Reference:</b>	Kitchen
<b>Current FR:</b>	30
<b>Required FR:</b>	30
<b>Has the fire door got a third party fire door scheme label or plug fitted?:</b>	No
<b>Can you confirm that the door is in fact a fire door and has been proven as such?:</b>	Nominal fd30 listed door set
<b>Door type</b>	
<b>Door set type:</b>	Double Leaf - Single Action
<b>Door Aesthetics :</b>	Painted
<b>Architrave type:</b>	Bullnose
<b>Door leaf handing:</b>	Double door
<b>Door set condition</b>	
<b>Is the door set free from damage?:</b>	Yes
<b>Maintenance or no action?:</b>	No action
<b>Door Leaf</b>	
<b>Does the door leaf sit against the door stop and is it free from distortion?:</b>	N/A
<b>If the door is veneered or lipped, is the glue still holding these products firmly in place?:</b>	N/A
<b>Is the door leaf free from damage affecting its fire integrity?:</b>	N/A
<b>Does the door have the correct signage?:</b>	N/A
<b>Door Frame</b>	
<b>Is the door frame firmly attached to the wall?:</b>	N/A
<b>If a planted door stop is present, is it firmly attached?:</b>	N/A
<b>Are the frame to door leaf gaps in line with the manufacturers installation instructions/testing? :</b>	N/A
<b>Is the door frame free from damage affecting its fire integrity?:</b>	N/A
<b>Is there a consistent gap under the door that allows it to swing without touching floor covering?:</b>	N/A
<b>Is the door to floor covering gap in line with the manufacturer's installation instructions / testing?:</b>	N/A
<b>Intumescent/Smoke/Acoust Seals</b>	
<b>Are intumescent seals in place?:</b>	N/A
<b>Hinges</b>	
<b>Is there a minimum of three hinges with all of the screws fitted?:</b>	N/A
<b>Are all the ironmongery screws secure and the correct size?:</b>	N/A
<b>Are the hinges free of metal fragment and oil leakage, which show signs of wear?:</b>	N/A
<b>Are intumescent packers installed behind hinge?:</b>	N/A
<b>Is all the ironmongery marked with CE stamp or BSEN 1935 grade 13 (or international equivalent)?:</b>	N/A
<b>Is all ironmongery free from damage and operating correctly?:</b>	N/A
<b>Door Closers</b>	
<b>Does the door have a closer?:</b>	N/A
<b>Hold Open Devices</b>	

Does the door have an electronically powered hold open device?:	N/A
Lock And Latch	
Does the door have a lock and/or latch? :	N/A
Glazing And Glass	
Does the door leaf contain a vision panel(s)?:	N/A
Side And Overpanels	
Are there side and overpanels installed?:	N/A
Summary	
Summary / Recomendations:	
No access during the time of survey	



Photo(s)  
Photo 1 of 1

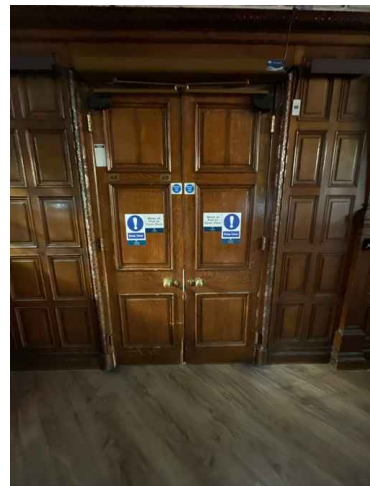


**Pin Number:** 0031:28  
**Company:** Element Passive Fire Protection Ltd  
  
**Created By:** Costel Arsene - 28  
**Template:** Door Maintenance

**Date Added:** 29/10/2024 - 12:25  
**Location:** South Hampstead High School / South Hampstead High School - All Floors / South Hampstead High School - All Floors / EL1171 - South Hampstead High School - All Floors  
**Status:** Action required

<b>Door Label</b>	
<b>Floor /Level:</b>	G
<b>Door Reference:</b>	Common room
<b>Current FR:</b>	30
<b>Required FR:</b>	30
<b>Has the fire door got a third party fire door scheme label or plug fitted?:</b>	No
<b>Can you confirm that the door is in fact a fire door and has been proven as such?:</b>	Nominal fd30
<b>Door type</b>	
<b>Door set type:</b>	Double Leaf - Single Action
<b>Door Aesthetics :</b>	Painted, Walnut Veneer
<b>Architrave type:</b>	Bullnose
<b>Door leaf handing:</b>	Double door
<b>Door set condition</b>	
<b>Is the door set free from damage?:</b>	No
<b>Door leaf or door set replacement?:</b>	Replacement door set
<b>Door Leaf</b>	
<b>Does the door leaf sit against the door stop and is it free from distortion?:</b>	N/A
<b>If the door is veneered or lipped, is the glue still holding these products firmly in place?:</b>	N/A
<b>Is the door leaf free from damage affecting its fire integrity?:</b>	N/A
<b>Does the door have the correct signage?:</b>	N/A
<b>Door Frame</b>	
<b>Is the door frame firmly attached to the wall?:</b>	N/A
<b>If a planted door stop is present, is it firmly attached?:</b>	N/A
<b>Are the frame to door leaf gaps in line with the manufacturers installation instructions/testing? :</b>	N/A
<b>Is the door frame free from damage affecting its fire integrity?:</b>	N/A
<b>Is there a consistent gap under the door that allows it to swing without touching floor covering?:</b>	N/A
<b>Is the door to floor covering gap in line with the manufacturer's installation instructions / testing?:</b>	N/A
<b>Intumescent/Smoke/Acoust Seals</b>	
<b>Are intumescent seals in place?:</b>	N/A
<b>Hinges</b>	
<b>Is there a minimum of three hinges with all of the screws fitted?:</b>	N/A
<b>Are all the ironmongery screws secure and the correct size?:</b>	N/A
<b>Are the hinges free of metal fragment and oil leakage, which show signs of wear?:</b>	N/A
<b>Are intumescent packers installed behind hinge?:</b>	N/A
<b>Is all the ironmongery marked with CE stamp or BSEN 1935 grade 13 (or international equivalent)?:</b>	N/A
<b>Is all ironmongery free from damage and operating correctly?:</b>	N/A
<b>Door Closers</b>	
<b>Does the door have a closer?:</b>	N/A
<b>Hold Open Devices</b>	

Does the door have an electronically powered hold open device?:	N/A
<b>Lock And Latch</b>	
Does the door have a lock and/or latch? :	N/A
<b>Glazing And Glass</b>	
Does the door leaf contain a vision panel(s)?:	N/A
<b>Side And Overpanels</b>	
Are there side and overpanels installed?:	N/A
<b>Replacement door leaf/ Replacement door set</b>	
Replacement door set (structural opening) width:	1350
Replacement door set (structural opening) height:	2300
Replacement door set (structural opening) wall depth:	300
Architrave width:	120
<b>Summary</b>	
<b>Summary / Recomendations:</b>	
Due to listed doorset in situ, remedial works limited to:	
Surface mount brush strips(10mm )	
6 grade 13 hinges	
FDKS Sticker signage	
Leaf repair	
Frame repair	
*Due to extensive damage to door frame and leaf ,FD30 double door set replacement recommended inclusive of following:	
6grade 13 hinges	
10mm intumescent brush strips	
4x AFDCK fixed signage	
2x automatic door closers	
Full lock and latch	
4x FDKS sticker signage	
Aesthetic see pictures	
<b>Priority</b>	
Priority:	2



Photo(s)  
Photo 1 of 4



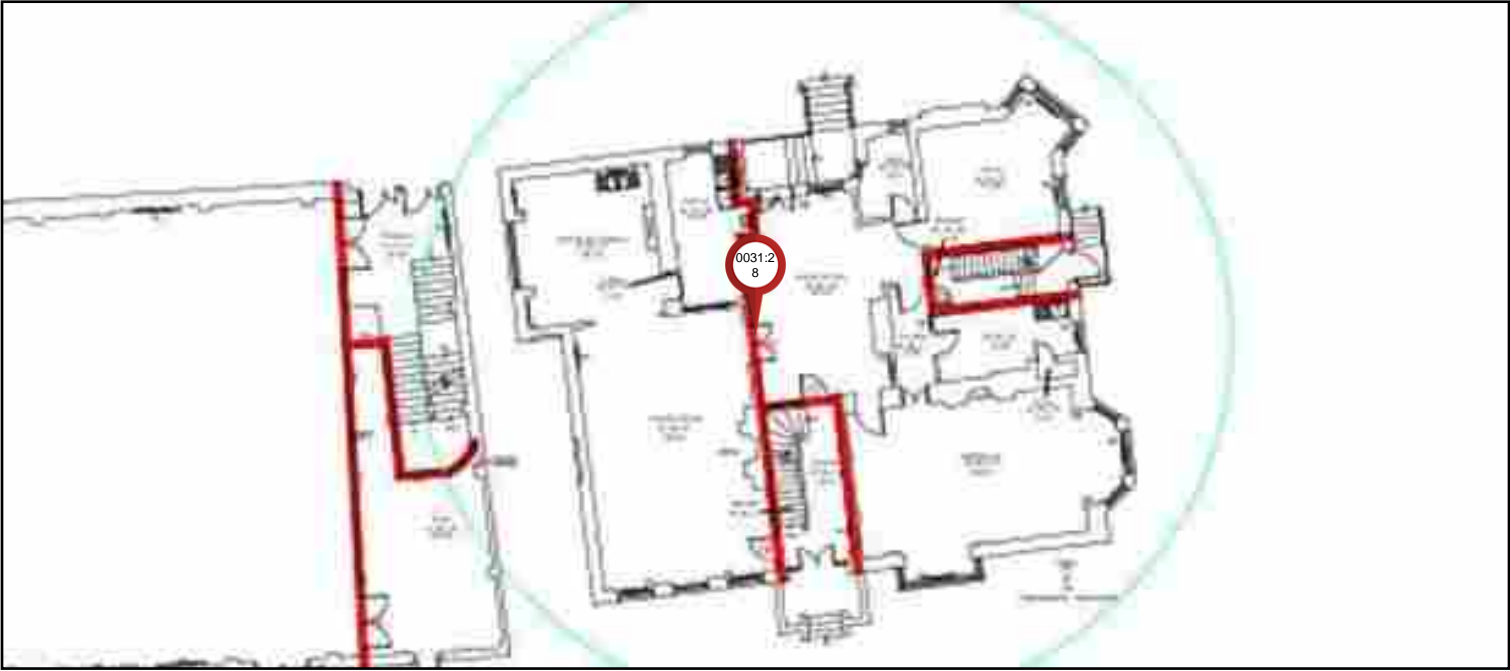
Photo(s)  
Photo 2 of 4



Photo(s)  
Photo 3 of 4



Photo(s)  
Photo 4 of 4



**Pin Number:** 0032:28  
**Company:** Element Passive Fire Protection Ltd  
  
**Created By:** Costel Arsene - 28  
**Template:** Door Maintenance

**Date Added:** 29/10/2024 - 12:31  
**Location:** South Hampstead High School / South Hampstead High School - All Floors / South Hampstead High School - All Floors / EL1171 - South Hampstead High School - All Floors  
**Status:** Action required

<b>Door Label</b>	
<b>Floor /Level:</b>	G
<b>Door Reference:</b>	Entrance to staircase
<b>Current FR:</b>	30
<b>Required FR:</b>	30
<b>Has the fire door got a third party fire door scheme label or plug fitted?:</b>	No
<b>Can you confirm that the door is in fact a fire door and has been proven as such?:</b>	Nominal fd30
<b>Door type</b>	
<b>Door set type:</b>	Single Leaf - Single Action
<b>Door Aesthetics :</b>	Painted, Walnut Veneer
<b>Architrave type:</b>	Bullnose
<b>Door leaf handing:</b>	Left-handed
<b>Door set condition</b>	
<b>Is the door set free from damage?:</b>	Yes
<b>Maintenance or no action?:</b>	Maintenance
<b>Door Leaf</b>	
<b>Does the door leaf sit against the door stop and is it free from distortion?:</b>	Yes
<b>If the door is veneered or lipped, is the glue still holding these products firmly in place?:</b>	Yes
<b>Is the door leaf free from damage affecting its fire integrity?:</b>	Yes
<b>Does the door have the correct signage?:</b>	No
<b>Door Frame</b>	
<b>Is the door frame firmly attached to the wall?:</b>	Yes
<b>If a planted door stop is present, is it firmly attached?:</b>	Yes
<b>Are the frame to door leaf gaps in line with the manufacturers installation instructions/testing? :</b>	Yes
<b>Is the door frame free from damage affecting its fire integrity?:</b>	Yes
<b>Is there a consistent gap under the door that allows it to swing without touching floor covering?:</b>	Yes
<b>Is the door to floor covering gap in line with the manufacturer's installation instructions / testing?:</b>	No
<b>Threshold Gap:</b>	23
<b>Intumescent/Smoke/Acoust Seals</b>	
<b>Are intumescent seals in place?:</b>	Yes
<b>Are the seals free from damage?:</b>	No
<b>Are the smoke seals free from paint or varnish?:</b>	Yes
<b>Are the seals well attached inside the groove in the frame or door leaf?:</b>	Yes
<b>Are the seals continuous around the frame or door leaf?:</b>	Yes
<b>Is the smoke seal in full contact with the door giving an effective seal?:</b>	No
<b>Hinges</b>	
<b>Is there a minimum of three hinges with all of the screws fitted?:</b>	Yes
<b>Are all the ironmongery screws secure and the correct size?:</b>	Yes
<b>Are the hinges free of metal fragment and oil leakage, which show signs of wear?:</b>	Yes

Are intumescent packers installed behind hinge?:	Unable to Verify
Is all the ironmongery marked with CE stamp or BSEN 1935 grade 13 (or international equivalent)?:	No
Is all ironmongery free from damage and operating correctly?:	Yes
<b>Door Closers</b>	
Does the door have a closer?:	Yes
Open the door to 5 degrees or 75mm. Does it close and engage with the latch?:	Yes
Is the closer correctly attached to the door and frame?:	Yes
Is the closer free from damage and not leaking?:	Yes
If unlatched, does the closer hold the door in line with the frame and intumescent seal?:	Yes
If hung in pairs, do they close in line if both opened and released together? (optional):	No
Does the door close within the specified time required?:	Yes
<b>Hold Open Devices</b>	
Does the door have an electronically powered hold open device?:	Yes
Does the hold open device release the door when required?:	Yes
<b>Lock And Latch</b>	
Does the door have a lock and/or latch? :	No
<b>Glazing And Glass</b>	
Does the door leaf contain a vision panel(s)?:	Yes
Is the intumescent seal continuous and attached to the glass and bead?:	Yes
Are the glazing beads correctly attached to the frame from both sides and free from damage?:	Yes
Is the glass free from damage and cracking?:	Yes
Is the glass identified as fire rated?:	Yes
If glazing panels are below 1500mm from bottom of door, is the glass safety glass?:	N/A
<b>Side And Overpanels</b>	
Are there side and overpanels installed?:	Yes
Panel Type:	Glass
Is the intumescent seal continuous and attached to the glass and bead?:	Yes
Are the glazing beads correctly attached to the frame from both sides and free from damage?:	Yes
Is the glass free from damage and cracking?:	Yes
Is the Glass identified as fire rated?:	Unable to Verify
If glazing panels are below 1500mm from bottom of door, is the glass safety glass?:	N/A
<b>Maintenance Remedial Works Required</b>	
Door gaps:	Ease and Adjustment, Install Lipping (BE), Install face-mounted drop-down seal
Door seals:	15mm intumescent/brush seals
Ironmongery:	3x Grade 13 hinges
Other:	FDKS
<b>Summary</b>	
<b>Summary / Recommendations:</b>	
Due to listed doorset in situ, remedial works limited to:	
Surface mount brush strips(15mm )	
4 grade 13 hinges	
FDKS Sticker signage	
BE lipping, BE gap 23mm	
Face mounted drop down seal ( leaf 940mm)	



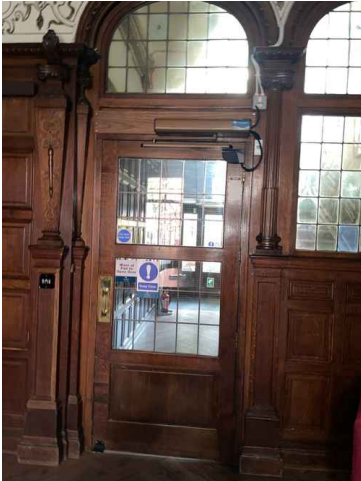
Priority	
Priority:	2



Photo(s)  
Photo 1 of 4



Photo(s)  
Photo 2 of 4



Photo(s)  
Photo 3 of 4



Photo(s)  
Photo 4 of 4





**Pin Number:** 0033:28  
**Company:** Element Passive Fire Protection Ltd  
  
**Created By:** Costel Arsene - 28  
**Template:** Door Maintenance

**Date Added:** 29/10/2024 - 12:37  
**Location:** South Hampstead High School / South Hampstead High School - All Floors / South Hampstead High School - All Floors / EL1171 - South Hampstead High School - All Floors  
**Status:** Action required

Door Label	
Floor /Level:	G
Door Reference:	Staircase
Current FR:	30
Required FR:	30
Has the fire door got a third party fire door scheme label or plug fitted?:	No
Can you confirm that the door is in fact a fire door and has been proven as such?:	Nominal fd30
Door type	
Door set type:	Single Leaf - Single Action
Door Aesthetics :	Painted, Walnut Veneer
Architrave type:	Bullnose
Door leaf handing:	Left-handed
Door set condition	
Is the door set free from damage?:	Yes
Maintenance or no action?:	Maintenance
Door Leaf	
Does the door leaf sit against the door stop and is it free from distortion?:	Yes
If the door is veneered or lipped, is the glue still holding these products firmly in place?:	Yes
Is the door leaf free from damage affecting its fire integrity?:	Yes
Does the door have the correct signage?:	No
Door Frame	
Is the door frame firmly attached to the wall?:	Yes
If a planted door stop is present, is it firmly attached?:	Yes
Are the frame to door leaf gaps in line with the manufacturers installation instructions/testing? :	Yes
Is the door frame free from damage affecting its fire integrity?:	Yes
Is there a consistent gap under the door that allows it to swing without touching floor covering?:	Yes
Is the door to floor covering gap in line with the manufacturer's installation instructions / testing?:	No
Threshold Gap:	18
Intumescent/Smoke/Acoust Seals	
Are intumescent seals in place?:	No
Hinges	
Is there a minimum of three hinges with all of the screws fitted?:	No
Are all the ironmongery screws secure and the correct size?:	Yes
Are the hinges free of metal fragment and oil leakage, which show signs of wear?:	No
Are intumescent packers installed behind hinge?:	Unable to Verify
Is all the ironmongery marked with CE stamp or BSEN 1935 grade 13 (or international equivalent)?:	No
Is all ironmongery free from damage and operating correctly?:	No
Door Closers	
Does the door have a closer?:	Yes

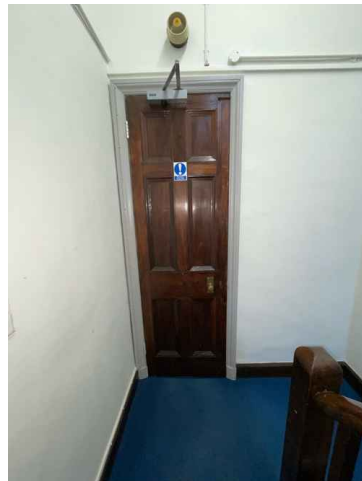
Open the door to 5 degrees or 75mm. Does it close and engage with the latch?:	Yes
Is the closer correctly attached to the door and frame?:	Yes
Is the closer free from damage and not leaking?:	Yes
If unlatched, does the closer hold the door in line with the frame and intumescent seal?:	Yes
If hung in pairs, do they close in line if both opened and released together? (optional):	N/A
Does the door close within the specified time required?:	No
<b>Hold Open Devices</b>	
Does the door have an electronically powered hold open device?:	No
<b>Lock And Latch</b>	
Does the door have a lock and/or latch? :	Yes
Does the latch hold the door firmly in place without rattling?:	Yes
<b>Glazing And Glass</b>	
Does the door leaf contain a vision panel(s)?:	No
<b>Side And Overpanels</b>	
Are there side and overpanels installed?:	No
<b>Maintenance Remedial Works Required</b>	
Door gaps:	Ease and Adjustment, Install face-mounted drop-down seal
Door seals:	15mm intumescent/brush seals
Ironmongery:	3x Grade 13 hinges, Closer Adjustment
Other:	FDKS
<b>Summary</b>	
<b>Summary / Recomendations:</b>	
Due to listed doorset in situ, remedial works limited to:	
Surface mount brush strips(15mm )	
3 grade 13 hinges	
FDKS Sticker signage	
Face mounted drop down seal (leaf 680mm)	
Closer adjustment	
<b>Priority</b>	
Priority:	2



Photo(s)  
Photo 1 of 4



Photo(s)  
Photo 2 of 4



Photo(s)  
Photo 3 of 4



Photo(s)  
Photo 4 of 4



**Pin Number:** 0034:28

**Company:** Element Passive Fire Protection Ltd

**Created By:** Costel Arsene - 28

**Template:** Door Maintenance

**Date Added:** 29/10/2024 - 12:39

**Location:** South Hampstead High School / South Hampstead High School - All Floors / South Hampstead High School - All Floors / EL1171 - South Hampstead High School - All Floors

**Status:** No action

<b>Door Label</b>	
<b>Floor /Level:</b>	5
<b>Door Reference:</b>	Top floor
<b>Current FR:</b>	30
<b>Required FR:</b>	30
<b>Has the fire door got a third party fire door scheme label or plug fitted?:</b>	No
<b>Door type</b>	
<b>Door set type:</b>	Single Leaf - Single Action
<b>Door Aesthetics :</b>	Painted
<b>Architrave type:</b>	Torus
<b>Door leaf handing:</b>	Right-handed
<b>Door set condition</b>	
<b>Is the door set free from damage?:</b>	Yes
<b>Maintenance or no action?:</b>	No action
<b>Door Leaf</b>	
<b>Does the door leaf sit against the door stop and is it free from distortion?:</b>	N/A
<b>If the door is veneered or lipped, is the glue still holding these products firmly in place?:</b>	N/A
<b>Is the door leaf free from damage affecting its fire integrity?:</b>	N/A
<b>Does the door have the correct signage?:</b>	N/A
<b>Door Frame</b>	
<b>Is the door frame firmly attached to the wall?:</b>	N/A
<b>If a planted door stop is present, is it firmly attached?:</b>	N/A
<b>Are the frame to door leaf gaps in line with the manufacturers installation instructions/testing? :</b>	N/A
<b>Is the door frame free from damage affecting its fire integrity?:</b>	N/A
<b>Is there a consistent gap under the door that allows it to swing without touching floor covering?:</b>	N/A
<b>Is the door to floor covering gap in line with the manufacturer's installation instructions / testing?:</b>	N/A
<b>Intumescent/Smoke/Acoust Seals</b>	
<b>Are intumescent seals in place?:</b>	N/A
<b>Are the seals free from damage?:</b>	N/A
<b>Are the smoke seals free from paint or varnish?:</b>	N/A
<b>Are the seals well attached inside the groove in the frame or door leaf?:</b>	N/A
<b>Are the seals continuous around the frame or door leaf?:</b>	N/A
<b>Is the smoke seal in full contact with the door giving an effective seal?:</b>	N/A
<b>Hinges</b>	
<b>Is there a minimum of three hinges with all of the screws fitted?:</b>	N/A
<b>Are all the ironmongery screws secure and the correct size?:</b>	N/A
<b>Are the hinges free of metal fragment and oil leakage, which show signs of wear?:</b>	N/A
<b>Are intumescent packers installed behind hinge?:</b>	N/A
<b>Is all the ironmongery marked with CE stamp or BSEN 1935 grade 13 (or international equivalent)?:</b>	N/A

Is all ironmongery free from damage and operating correctly?:	N/A
<b>Door Closers</b>	
Does the door have a closer?:	N/A
Open the door to 5 degrees or 75mm. Does it close and engage with the latch?:	N/A
Is the closer correctly attached to the door and frame?:	N/A
Is the closer free from damage and not leaking?:	N/A
If unlatched, does the closer hold the door in line with the frame and intumescent seal?:	N/A
If hung in pairs, do they close in line if both opened and released together? (optional):	N/A
Does the door close within the specified time required?:	N/A
<b>Hold Open Devices</b>	
Does the door have an electronically powered hold open device?:	N/A
Does the hold open device release the door when required?:	N/A
<b>Lock And Latch</b>	
Does the door have a lock and/or latch? :	N/A
Does the latch hold the door firmly in place without rattling?:	N/A
<b>Glazing And Glass</b>	
Does the door leaf contain a vision panel(s)?:	N/A
Is the intumescent seal continuous and attached to the glass and bead?:	N/A
Are the glazing beads correctly attached to the frame from both sides and free from damage?:	N/A
Is the glass free from damage and cracking?:	N/A
Is the glass identified as fire rated?:	N/A
If glazing panels are below 1500mm from bottom of door, is the glass safety glass?:	N/A
<b>Side And Overpanels</b>	
Are there side and overpanels installed?:	N/A
Is the intumescent seal continuous and attached to the glass and bead?:	N/A
Are the glazing beads correctly attached to the frame from both sides and free from damage?:	N/A
Is the glass free from damage and cracking?:	N/A
Is the Glass identified as fire rated?:	N/A
If glazing panels are below 1500mm from bottom of door, is the glass safety glass?:	N/A
Is the panel free from damage?:	N/A
is the panel the same integrity as the door?:	N/A
<b>Summary</b>	
<b>Summary / Recommendations:</b>	
Maintenance informed us that this area is a duplicate of the floor plan above. Therefore, no remedial works required.	



Photo(s)  
Photo 1 of 1

