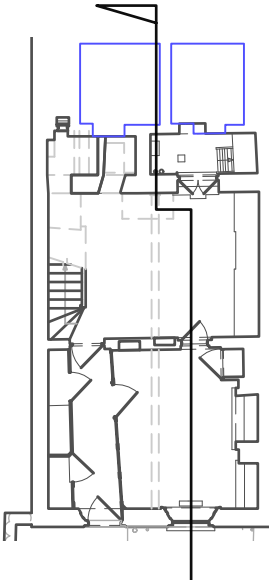
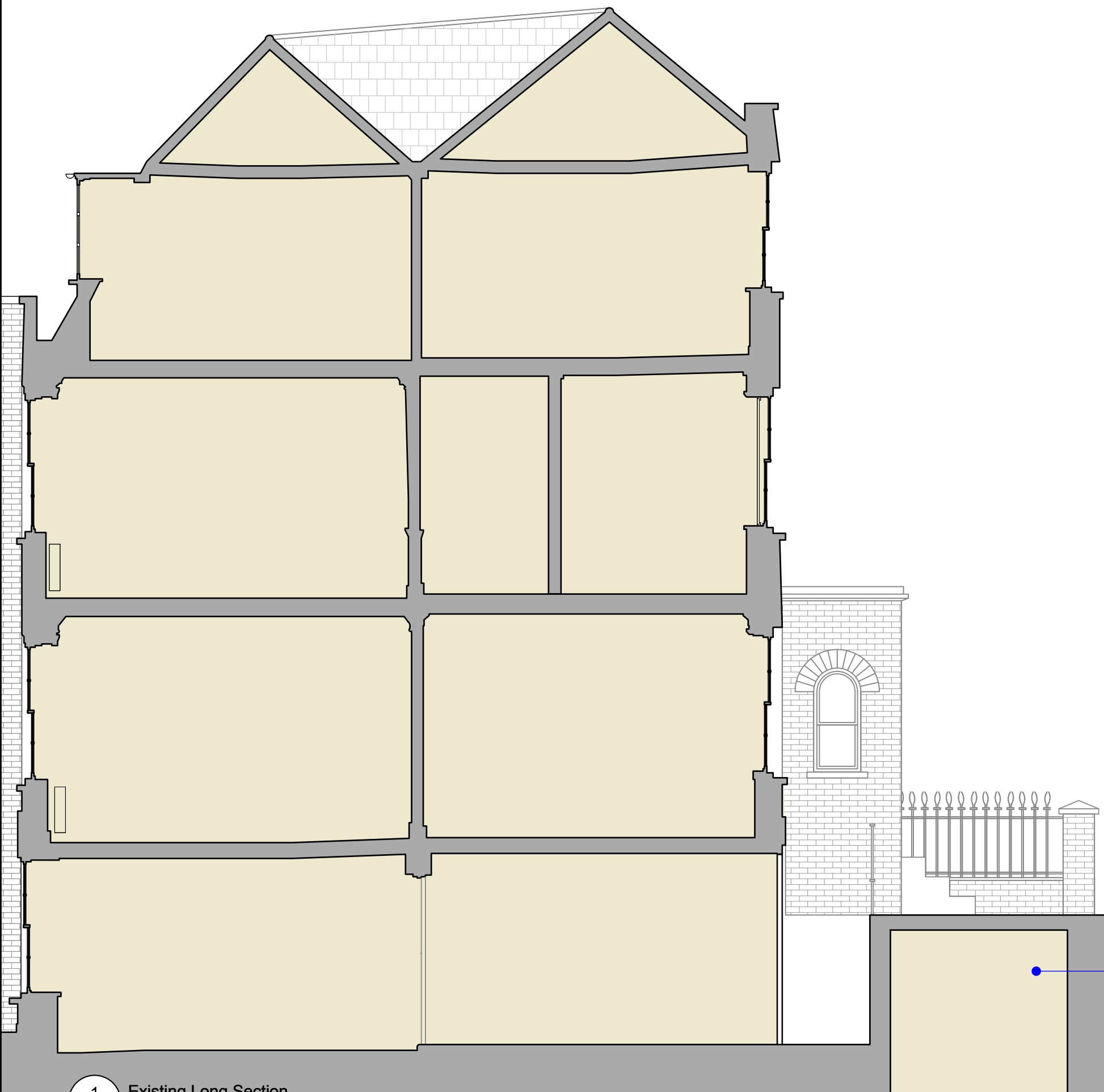


EXISTING - SECTION



2 Key Plan
201 Scale NTS

No.	Date	By	Revision Notes

Note

Although O.S. Coordinates may be shown on this plan the grid is to be treated as arbitrary. No scale factor has been applied to the survey therefore the any coordinates shown are not true O.S. Coordinates.

All dimensions to be checked on site



Roberts & Treguer

29 Clerkenwell Green
London
EC1R 0DU

Roberts and Treguer It

Client _____

32 Well Walk
NW3 1BX

Project Title _____

32 Well Walk

Sheet Title

EXISTING Long Section

Drawn By	Project ID
----------	------------

CB	2302
----	------

Reviewed By CB	Scale 1:50 @ A2
-------------------	--------------------

GR	1.50 @ A3
Date	Signed/No.

Date	Sheet NO.
------	-----------

06/02/2023	2302-201
------------	----------

	2002-2003
--	-----------

	1980	1985	1990	1995	2000	2005	2010	2015	2020
Population	76.5	80.5	84.5	88.5	92.5	96.5	100.0	103.5	107.0
GDP per capita	1,000	1,200	1,400	1,600	1,800	2,000	2,200	2,400	2,600
Life expectancy at birth	65	68	71	74	77	80	83	86	89
Urban population (%)	35	40	45	50	55	60	65	70	75
Employment rate (%)	55	58	61	64	67	70	73	76	79
Unemployment rate (%)	15	12	10	8	7	6	5	4	3
Government expenditure as % of GDP	15	18	21	24	27	30	33	36	39
Private consumption as % of GDP	55	58	61	64	67	70	73	76	79
Investment as % of GDP	10	12	14	16	18	20	22	24	26
Exports as % of GDP	10	12	14	16	18	20	22	24	26
Imports as % of GDP	10	12	14	16	18	20	22	24	26
Current account balance as % of GDP	-5	-4	-3	-2	-1	0	1	2	3
Foreign debt as % of GDP	10	12	14	16	18	20	22	24	26
Public debt as % of GDP	15	18	21	24	27	30	33	36	39
Private debt as % of GDP	10	12	14	16	18	20	22	24	26
Total debt as % of GDP	25	30	35	40	45	50	55	60	65
Government revenue as % of GDP	15	18	21	24	27	30	33	36	39
Private savings as % of GDP	10	12	14	16	18	20	22	24	26
Corporate savings as % of GDP	5	6	7	8	9	10	11	12	13
Household savings as % of GDP	5	6	7	8	9	10	11	12	13
Capital formation as % of GDP	10	12	14	16	18	20	22	24	26
Fixed capital formation as % of GDP	8	9	10	11	12	13	14	15	16
Consumption of fixed capital as % of GDP	2	3	4	5	6	7	8	9	10
Net capital formation as % of GDP	8	9	10	11	12	13	14	15	16
Government revenue as % of GDP	15	18	21	24	27	30	33	36	39
Government expenditure as % of GDP	15	18	21	24	27	30	33	36	39
Balance of payments as % of GDP	-5	-4	-3	-2	-1	0	1	2	3
Trade balance as % of GDP	-5	-4	-3	-2	-1	0	1	2	3
Services balance as % of GDP	0	0	0	0	0	0	0	0	0
Primary income balance as % of GDP	0	0	0	0	0	0	0	0	0
Secondary income balance as % of GDP	0	0	0	0	0	0	0	0	0
Direct investment as % of GDP	5	6	7	8	9	10	11	12	13
Portfolio investment as % of GDP	5	6	7	8	9	10	11	12	13
Other investment as % of GDP	5	6	7	8	9	10	11	12	13
Reserve assets as % of GDP	5	6	7	8	9	10	11	12	13
Liability reserves as % of GDP	5	6	7	8	9	10	11	12	13
Net international reserves as % of GDP	0	0	0	0	0	0	0	0	0
Official development assistance as % of GDP	0	0	0	0	0	0	0	0	0
Grants as % of GDP	0	0	0	0	0	0	0	0	0
Loans as % of GDP	0	0	0	0	0	0	0	0	0
Guarantees as % of GDP	0	0	0	0	0	0	0	0	0
Repayments as % of GDP	0	0	0	0	0	0	0	0	0
Interest as % of GDP	0	0	0	0	0	0	0	0	0
Dividends as % of GDP	0	0	0	0	0	0	0	0	0
Royalties as % of GDP	0	0	0	0	0	0	0	0	0
Income from abroad as % of GDP	0	0	0	0	0	0	0	0	0
Income from direct investment as % of GDP	0	0	0	0	0	0	0	0	0
Income from portfolio investment as % of GDP	0	0	0	0	0	0	0	0	0
Income from other investment as % of GDP	0	0	0	0	0	0	0	0	0
Income from government as % of GDP	0	0	0	0	0	0	0	0	0
Income from private as % of GDP	0	0	0	0	0	0	0	0	0
Income from foreign as % of GDP	0	0	0	0	0	0	0	0	0
Income from domestic as % of GDP	0	0							