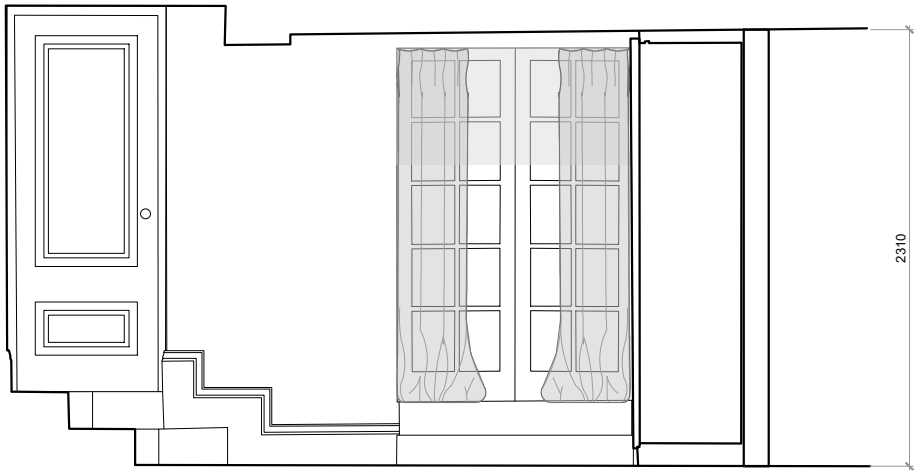
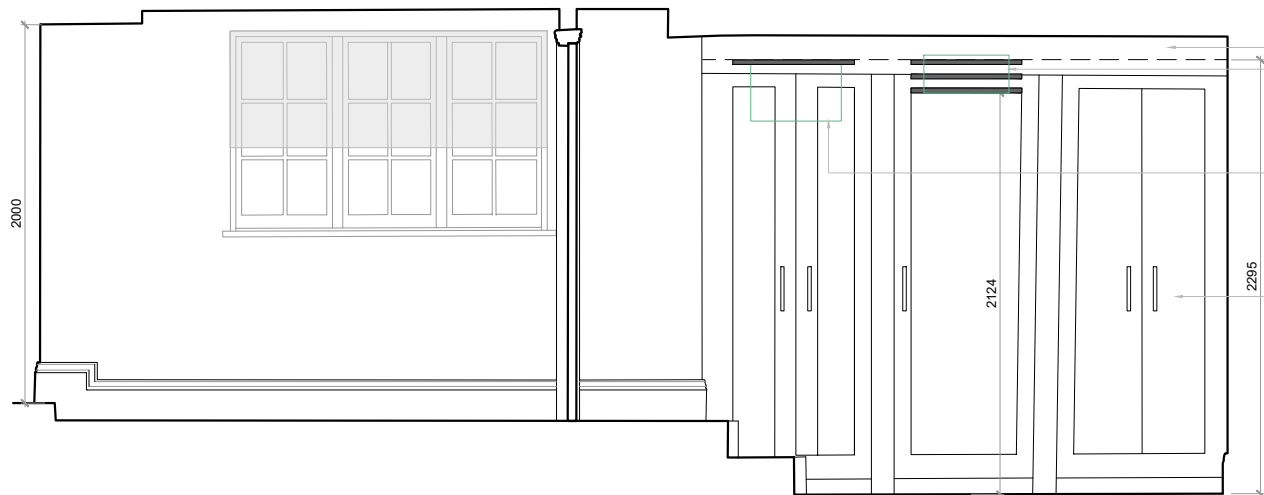


ELEVATION A - EXISTING



ELEVATION D - EXISTING

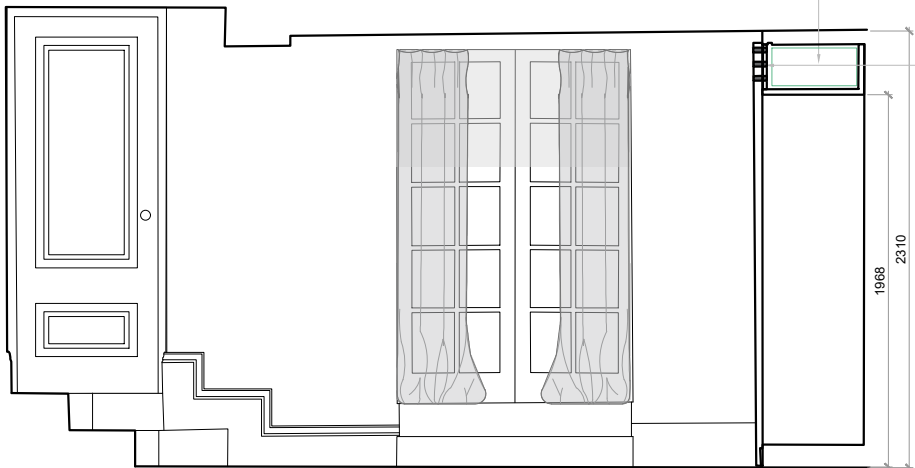


ELEVATION A - PROPOSED

EXISTING BEAM
AC POSITION ABOVE BATHROOM
DOOR INTEGRATED IN
WARDROBE - JOINERY TO BE
ADAPTED ACCORDINGLY.
VENTILATION REQUIREMENTS
TBC BY AC CONSULTANT

CONDENSER POSITION
INTEGRATED IN WARDROBE -
JOINERY TO BE ADAPTED
ACCORDINGLY. VENTILATION
REQUIREMENTS TBC BY AC
CONSULTANT

EXISTING WARDROBES
REPOSITIONED



ELEVATION D - PROPOSED

AC POSITION
INTEGRATED IN
WARDROBE - JOINERY
TO BE ADAPTED
ACCORDINGLY

GRILLE OR FABRIC TO
HIDE AC WHEN DOOR
TO BATHROOM OPEN.

CONDENSER POSITION
INTEGRATED IN
WARDROBE - JOINERY
TO BE ADAPTED
ACCORDINGLY

HAZEL COLLINS DESIGN
x
STUDIO VIRIDIANA
INTERIOR ARCHITECTURE & DESIGN
WWW.STUDIOVIRIDIANA.COM - WWW.HAZELCOLLINS.COM
84 GAYNES MEWS, NW3 5BH

BEDROOM 03 - AC ELEVATIONS

ETON AVENUE, LONDON

All dimensions in mm unless otherwise noted. All dimensions to be checked on site. Drawing not to be scaled. PDF copies to be printed at actual size. All drawings are design intent and not valid for construction/fabrication. All discrepancies to be reported to the designer.

A - 24.11.05 - RL - ISSUED FOR PLANNING

PROJECT	ETON AVENUE
TITLE	BEDROOM 03
	AC ELEVATIONS
DWN BY	RL
DATE	24/09/27
SCALE	1:20 @ A1 / 1:40@A3
DWG. No	EA-00-LGF04-AC-02
REV.	A