

Federica Cammarota  
Design Studio

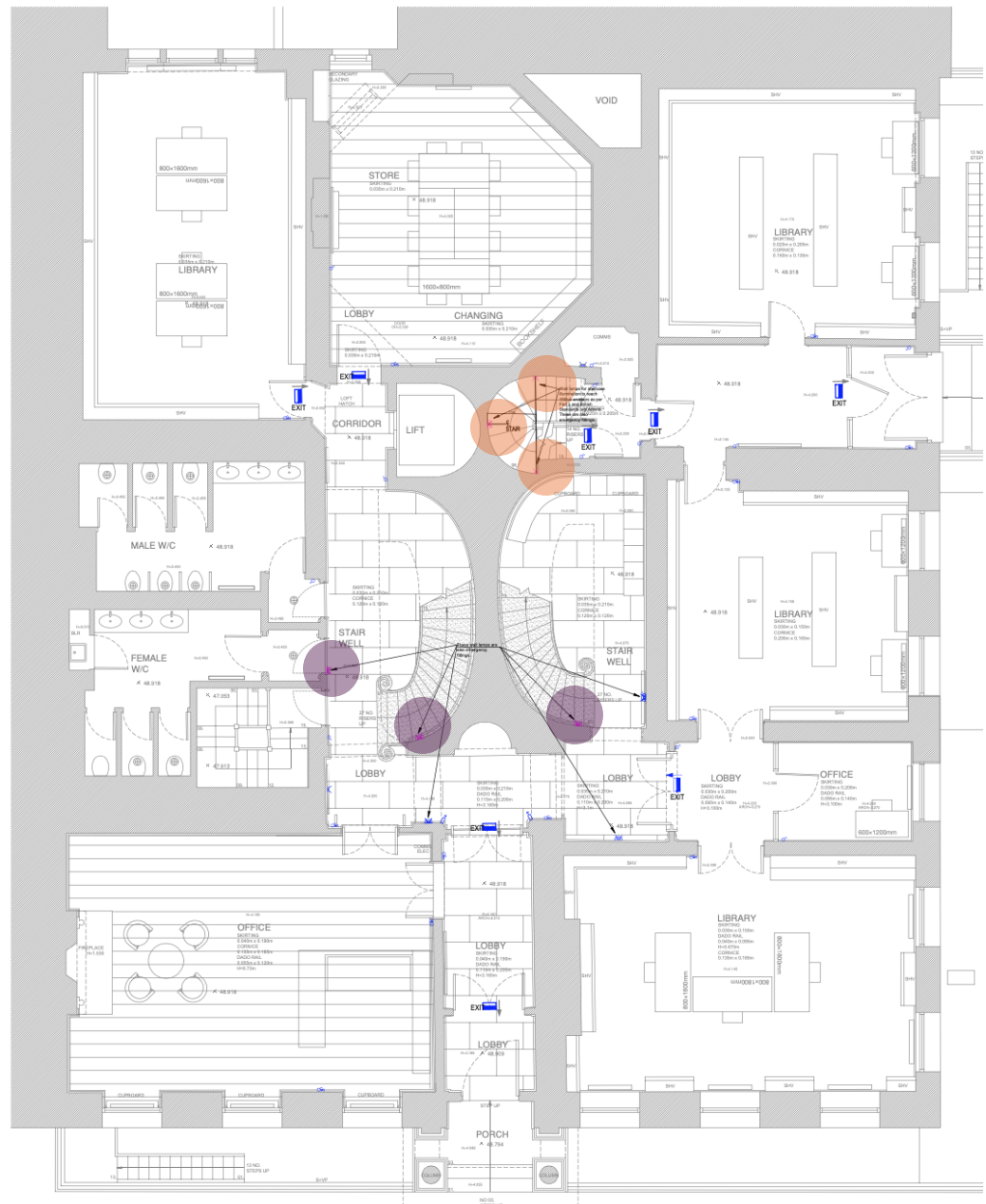
**Lighting Design**  
**Fittings with new position/fixing points**

**17 Bloomsbury Square**

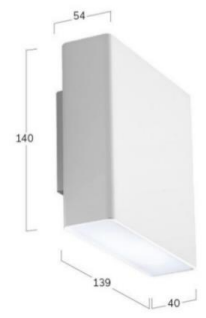
**German Historical Institute of London**

*4/04/2025*

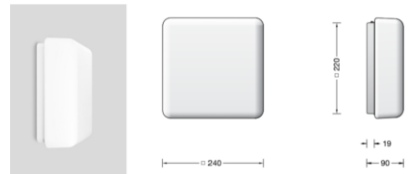
# Ground Floor – Low level Plan



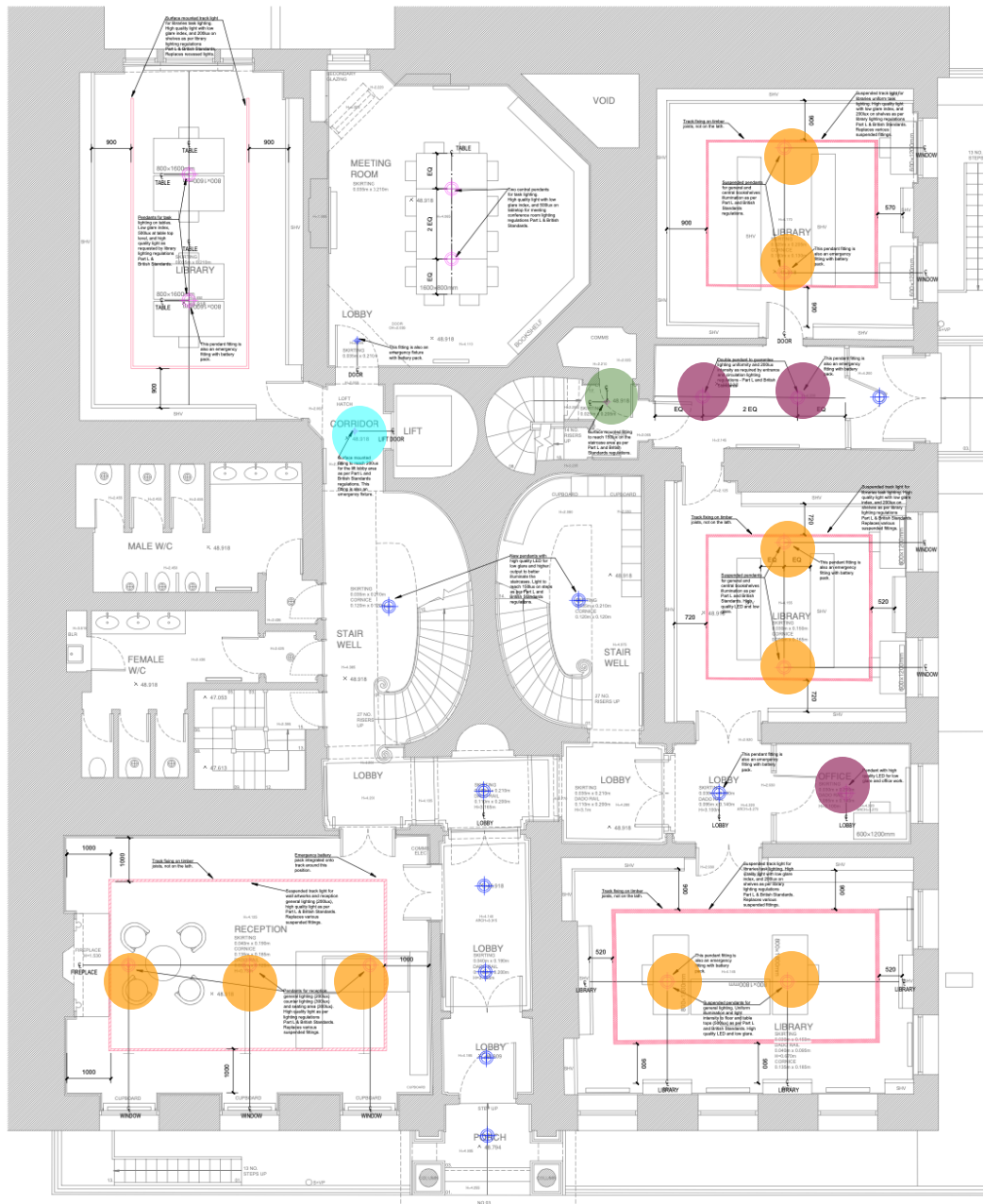
**Fixture WL5 & W5-E**  
Optelma Compact+ Wall - Wall mounted fitting with uplighting and downlighting effect.  
WL5-E: emergency fitting.



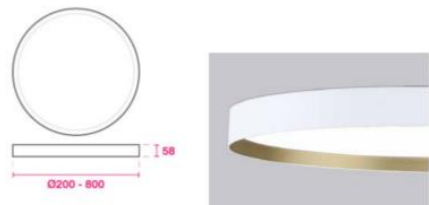
**Fixture WL6-E**  
Bega 50 300 k27 –  
Wall mounted fitting for diffused lighting effect, 9.5W.  
Emergency fittings.



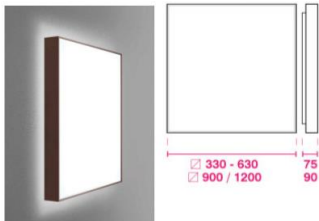
# Ground Floor – Reflected Ceiling Plan



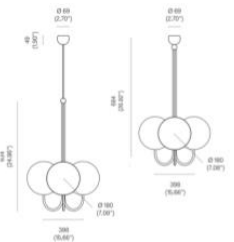
**Fixture CL6-E**  
Optelma – Lexa –  
Surface mounted ceiling lamp for  
diffused general lighting. Emergency.



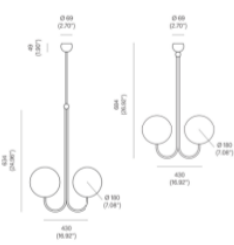
**Fixture CL5**  
Optelma Xata Wall –  
Surface mounted ceiling lamp  
for diffused general lighting.  
White finish (not as photo)



**Fixture PL2 – Fitting to be confirmed.**  
Michael Anastassiades  
Double Angle Pendant-  
Classic-inspired suspended chandelier; satin  
brass and glass finishes for use with LED  
bulbs.



**Fixture PL1 – Fitting to be confirmed**  
Michael Anastassiades  
Double Angle Pendant-  
Classic-inspired suspended chandelier;  
satin brass and glass finishes for use with  
LED bulbs.



**MEETING ROOM**  
MEETING ROOM  
12000 x 12000  
This room is designed for use as a meeting room. It features a large table and chairs. The lighting is designed to provide a high level of illumination, with a focus on the table area. The room is also equipped with a large screen and a sound system.

**LOBBY**  
LOBBY  
12000 x 12000  
This lobby is designed to provide a high level of illumination. It features a large table and chairs. The lighting is designed to provide a high level of illumination, with a focus on the table area. The room is also equipped with a large screen and a sound system.

**CORRIDOR**  
CORRIDOR  
12000 x 12000  
This corridor is designed to provide a high level of illumination. It features a large table and chairs. The lighting is designed to provide a high level of illumination, with a focus on the table area. The room is also equipped with a large screen and a sound system.

**STAIR WELL**  
STAIR WELL  
12000 x 12000  
This stair well is designed to provide a high level of illumination. It features a large table and chairs. The lighting is designed to provide a high level of illumination, with a focus on the table area. The room is also equipped with a large screen and a sound system.

**RECEPTION**  
RECEPTION  
12000 x 12000  
This reception area is designed to provide a high level of illumination. It features a large table and chairs. The lighting is designed to provide a high level of illumination, with a focus on the table area. The room is also equipped with a large screen and a sound system.

**LIBRARY**  
LIBRARY  
12000 x 12000  
This library is designed to provide a high level of illumination. It features a large table and chairs. The lighting is designed to provide a high level of illumination, with a focus on the table area. The room is also equipped with a large screen and a sound system.

**OFFICE**  
OFFICE  
12000 x 12000  
This office is designed to provide a high level of illumination. It features a large table and chairs. The lighting is designed to provide a high level of illumination, with a focus on the table area. The room is also equipped with a large screen and a sound system.

**MALE W/C**  
MALE W/C  
12000 x 12000  
This male restroom is designed to provide a high level of illumination. It features a large table and chairs. The lighting is designed to provide a high level of illumination, with a focus on the table area. The room is also equipped with a large screen and a sound system.

**FEMALE W/C**  
FEMALE W/C  
12000 x 12000  
This female restroom is designed to provide a high level of illumination. It features a large table and chairs. The lighting is designed to provide a high level of illumination, with a focus on the table area. The room is also equipped with a large screen and a sound system.

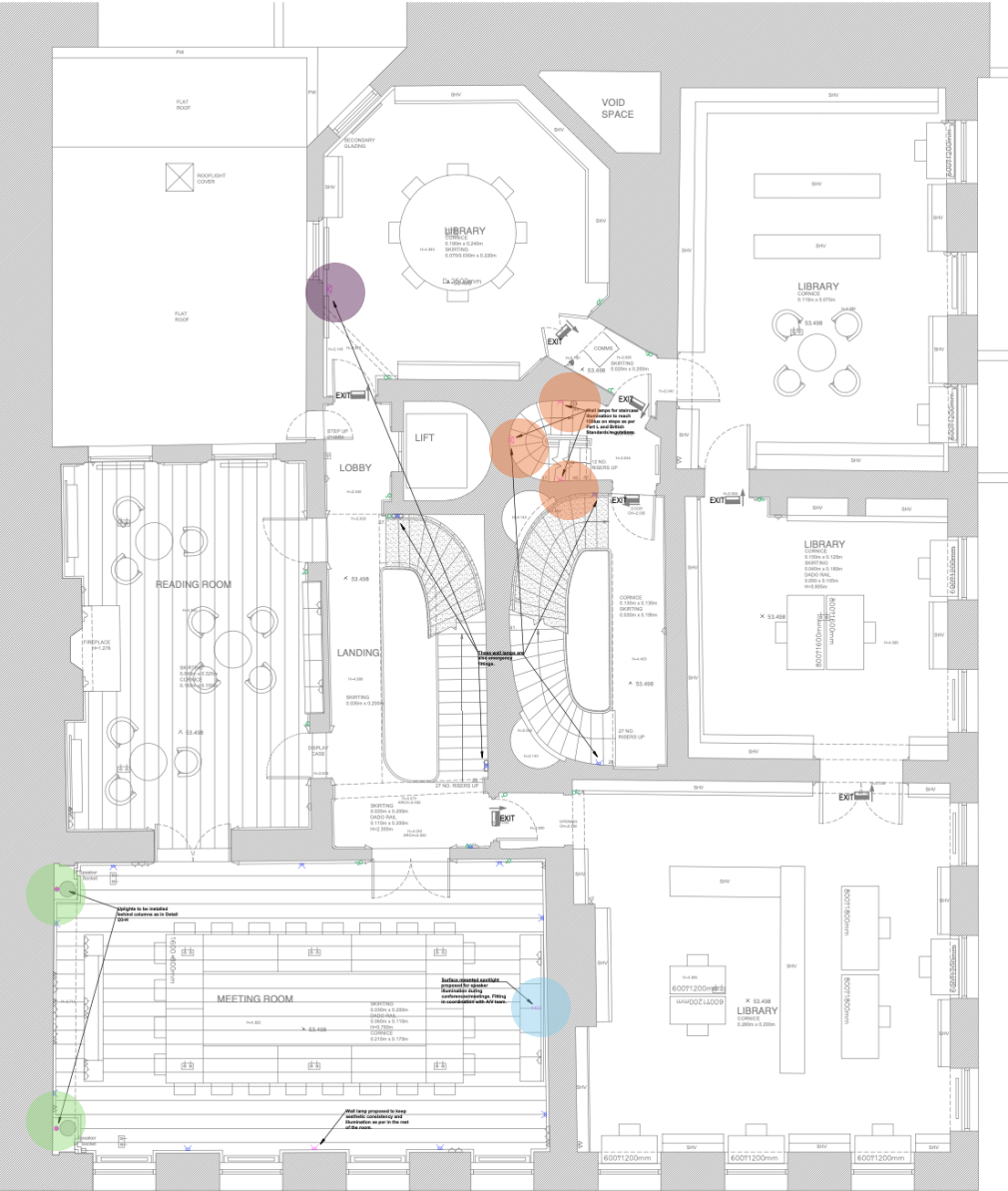
**PERCH**  
PERCH  
12000 x 12000  
This perch area is designed to provide a high level of illumination. It features a large table and chairs. The lighting is designed to provide a high level of illumination, with a focus on the table area. The room is also equipped with a large screen and a sound system.

[illegible]

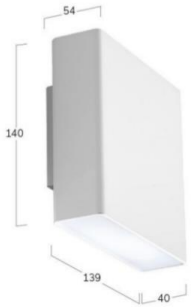
Technical drawing of the 'L' table. The side view on the left shows a table with a height of 45 and a width of 25. The top view on the right shows a rectangular table with a length of 100 and a width of 100. The table has a central pedestal with a diameter of 55.



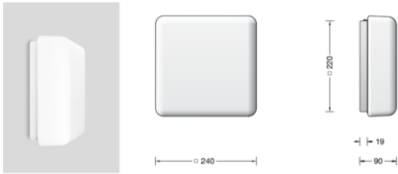
1<sup>st</sup> Floor – Low level Plan



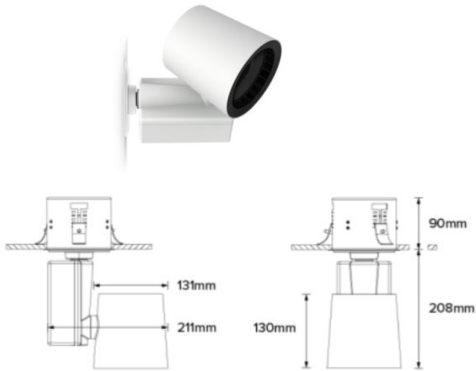
**Fixture WL5**  
Optelma Compact+ Wall  
Wall mounted fitting with  
uplighting and downlighting  
effect.



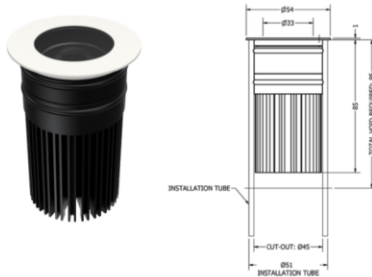
**Fixture WL6-E**  
Bega 50 300 k27 –  
Wall mounted fitting for  
diffused lighting effect and  
emergency lighting.



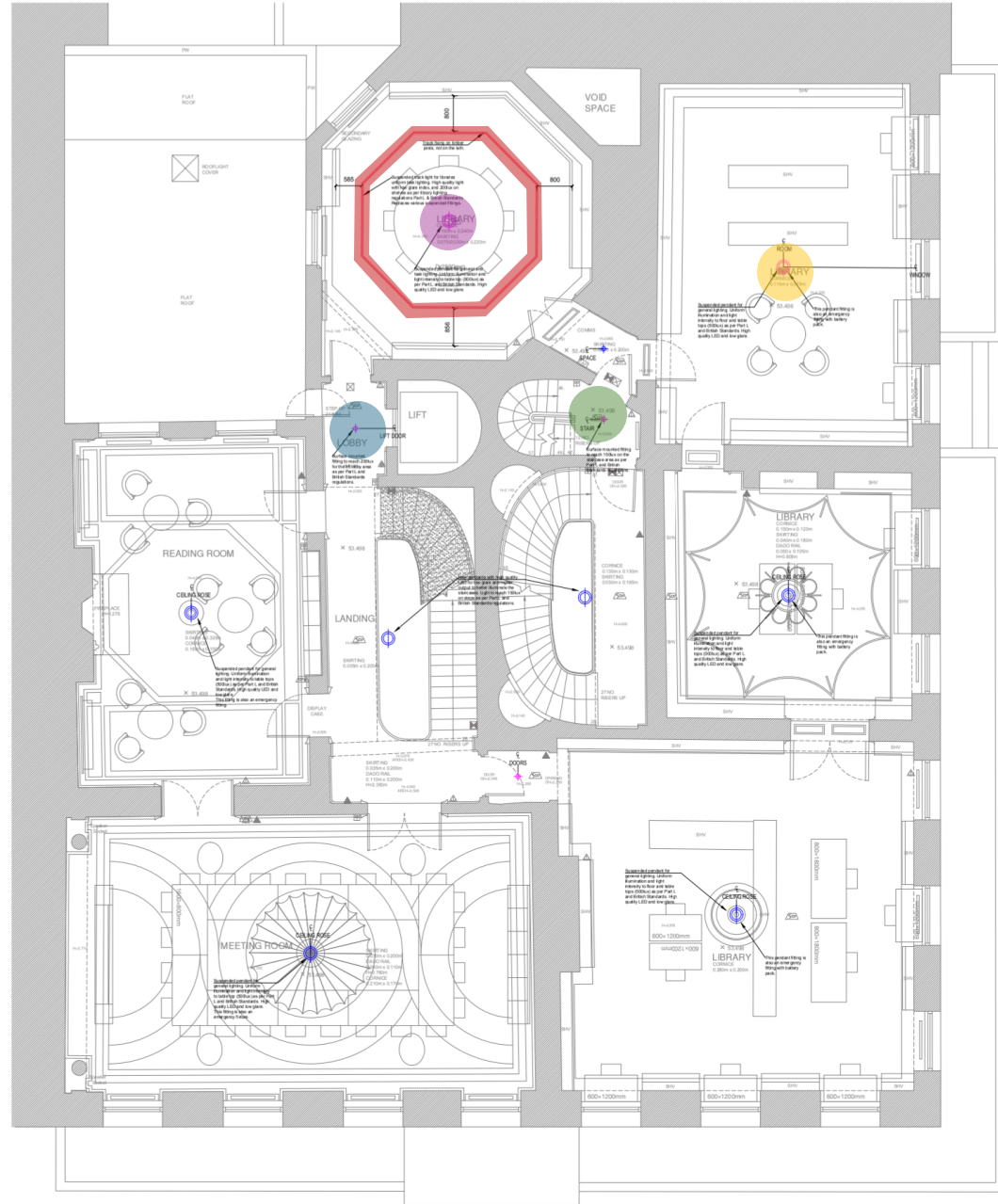
**Fixture SP3**  
RCL by luminii - DRX2 Monopoint–  
Monopoint compact spotlight with motorized  
movement, dimming, beam angle, and light intensity  
for the complete personalization of use by handheld  
remote. Light for conferences.



**Fixture U2**  
Phos - Nano Pano Midi –  
Low glare inground uplight, medium beam.

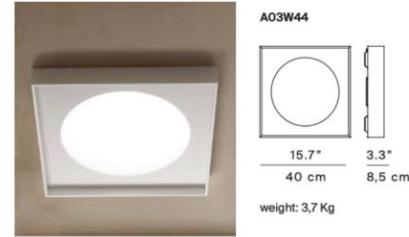


# 1<sup>st</sup> Floor – Reflected Ceiling Plan



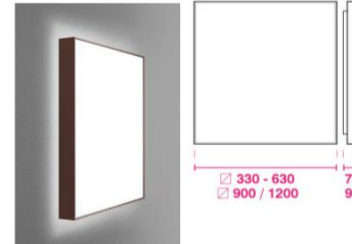
## Fixture CL2

Luceplan Cassette –  
Surface mounted ceiling lamp  
for diffused general lighting



## Fixture CL5

Optelma Xata Wall –  
Surface mounted ceiling lamp  
for diffused general lighting.  
White finish (not as per photo)



## Fixture PL3

Xal Task 900 Circle Suspended –  
Round luminaire with extremely  
flat design and diffuse direct and  
indirect lighting effect.



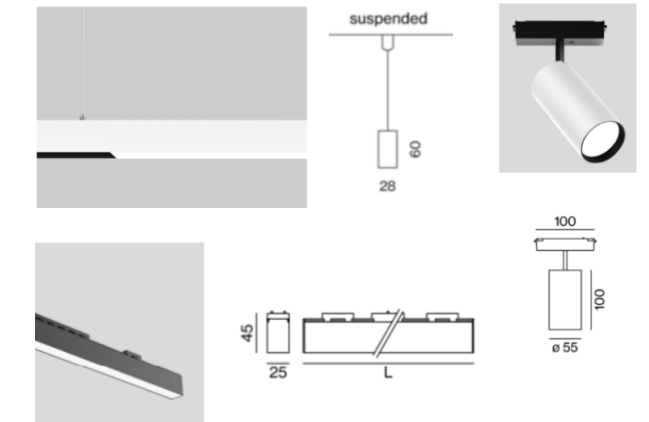
## Fixture PL7

Optelma Lexa Deco –  
Decorative pendant with  
suspension rod, direct and indirect  
lighting and opal diffuser.

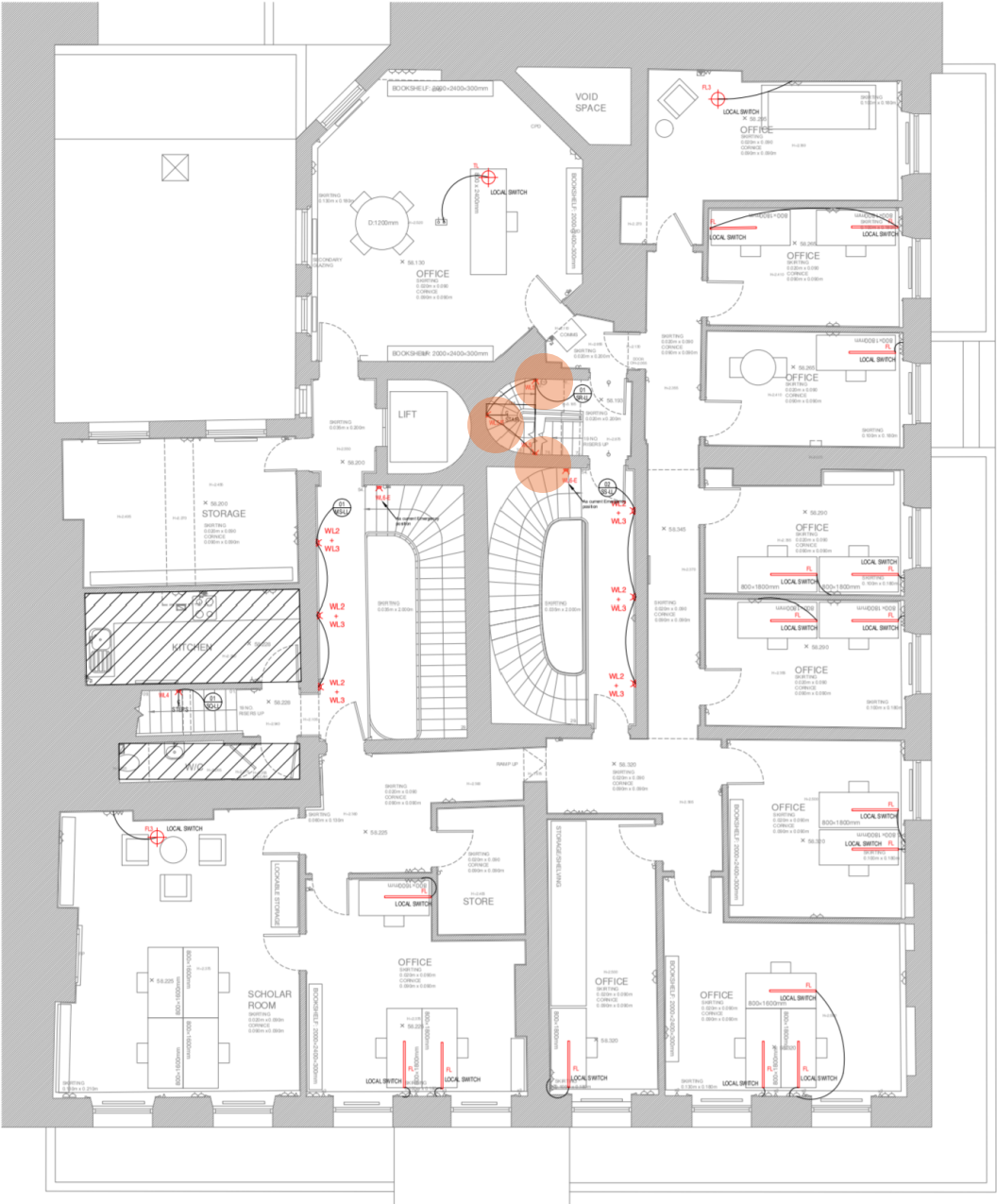


## Fixture TR2 + SP5, SP5a & WW-6

Xal - Suspended Move it 25 + Just 55 spot + Wall  
washer flush –  
Suspended track system for use with track mounted  
lighting in different beam angles + linear wall  
washer.



2<sup>nd</sup> Floor – Low level Plan



**Fixture WL5**  
Optelma Compact+ Wall - Wall  
mounted fitting with uplighting  
and downlighting effect.

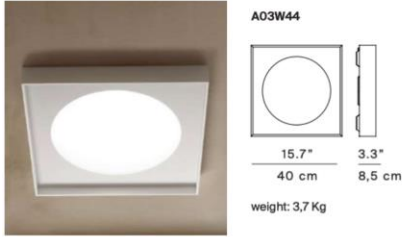




2nd Floor – Reflected Ceiling Plan



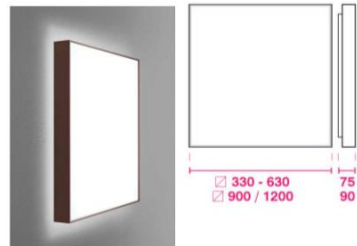
**Fixture CL2**  
Luceplan Cassette –  
Surface mounted ceiling lamp  
for diffused general lighting



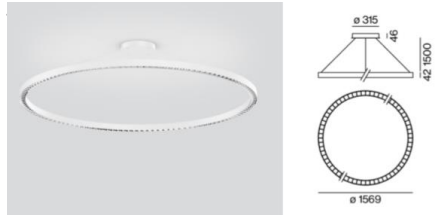
**Fixture CL3**  
Vibia - Duo Ceiling –  
Surface mounted ceiling lamp  
for diffused general lighting



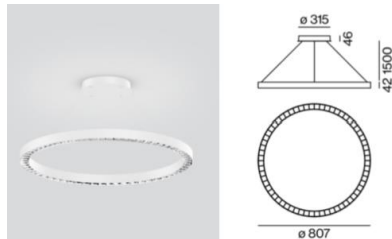
**Fixture CL5**  
Optelma Xata Wall –  
Surface mounted ceiling lamp  
for diffused general lighting.  
White finish (not as per photo)



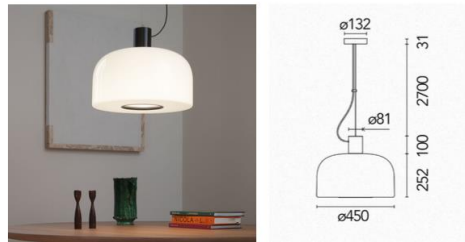
**Fixture PL8-E**  
Xal - Beto circle 1569mm–  
Rig pendant with special emergency kit,  
with direct and indirect lighting effect.



**Fixture PL9**  
Xal - Beto circle 800mm–  
Rig shape pendant, with direct and  
indirect lighting effect.

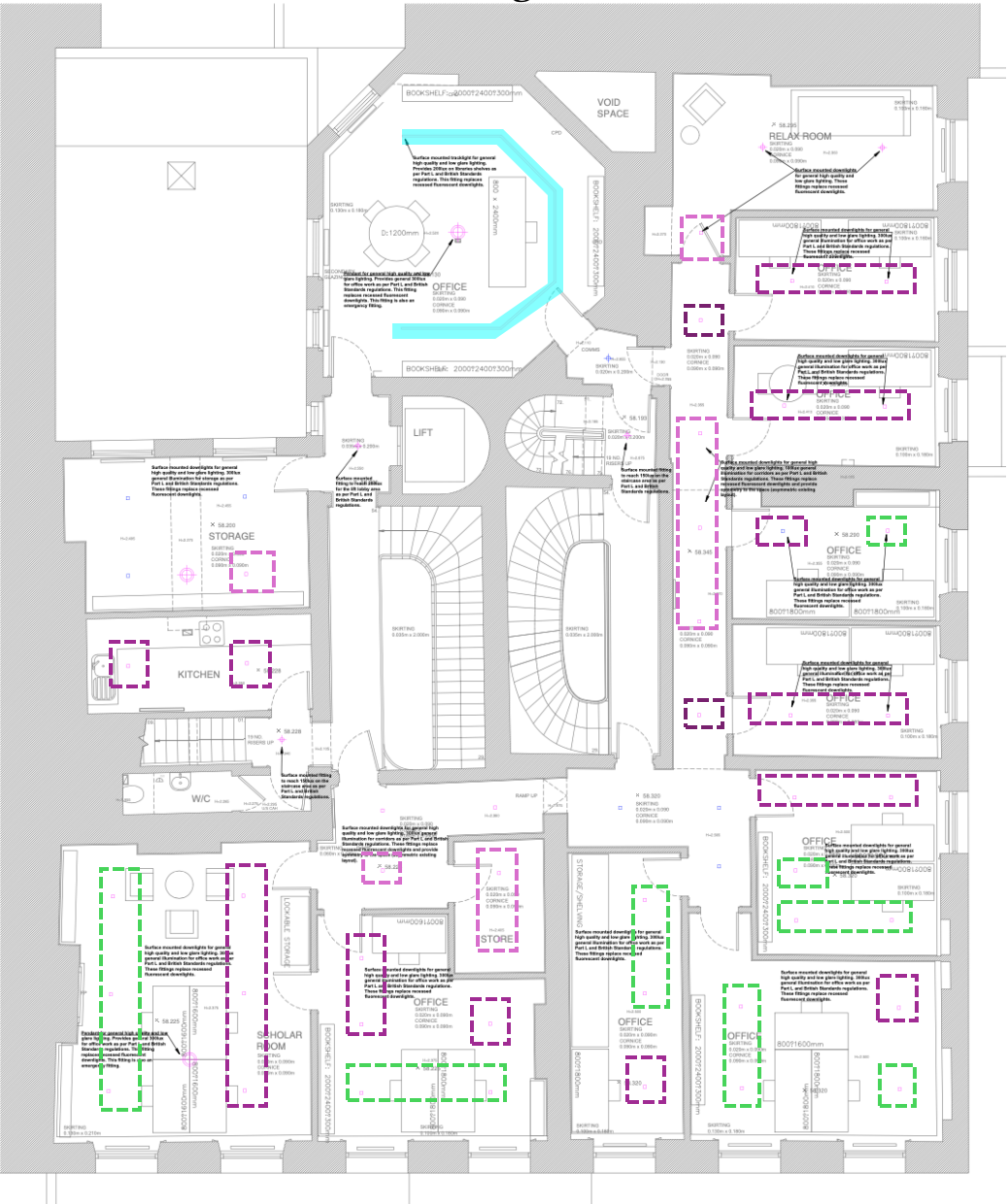


**Fixture PL13**  
Flos Bellhop Glass –  
Ceiling pendant lamp for  
diffused general lighting.





2nd Floor – Reflected Ceiling Plan



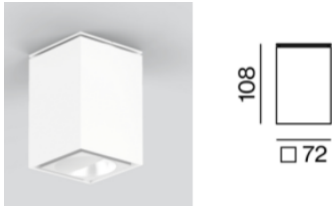
- D
- D1
- D1-E

**Fixtures D, D1 & D1-E**  
XAL - Sasso 60 Square Downlight -  
Square ceiling mounted spotlight for  
diffused general lighting.  
Ref. D: 44deg beam  
Ref. D1: 51deg beam  
Ref. D1-E: 51deg beam + emergency

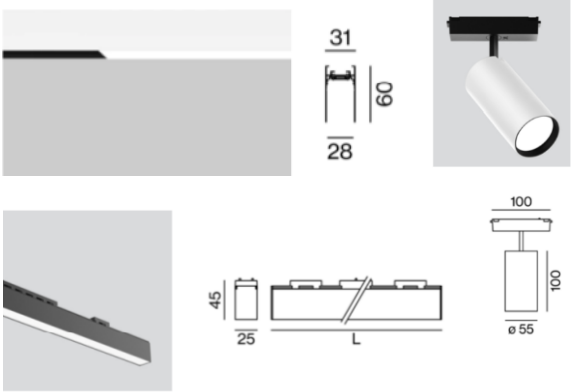


- D2

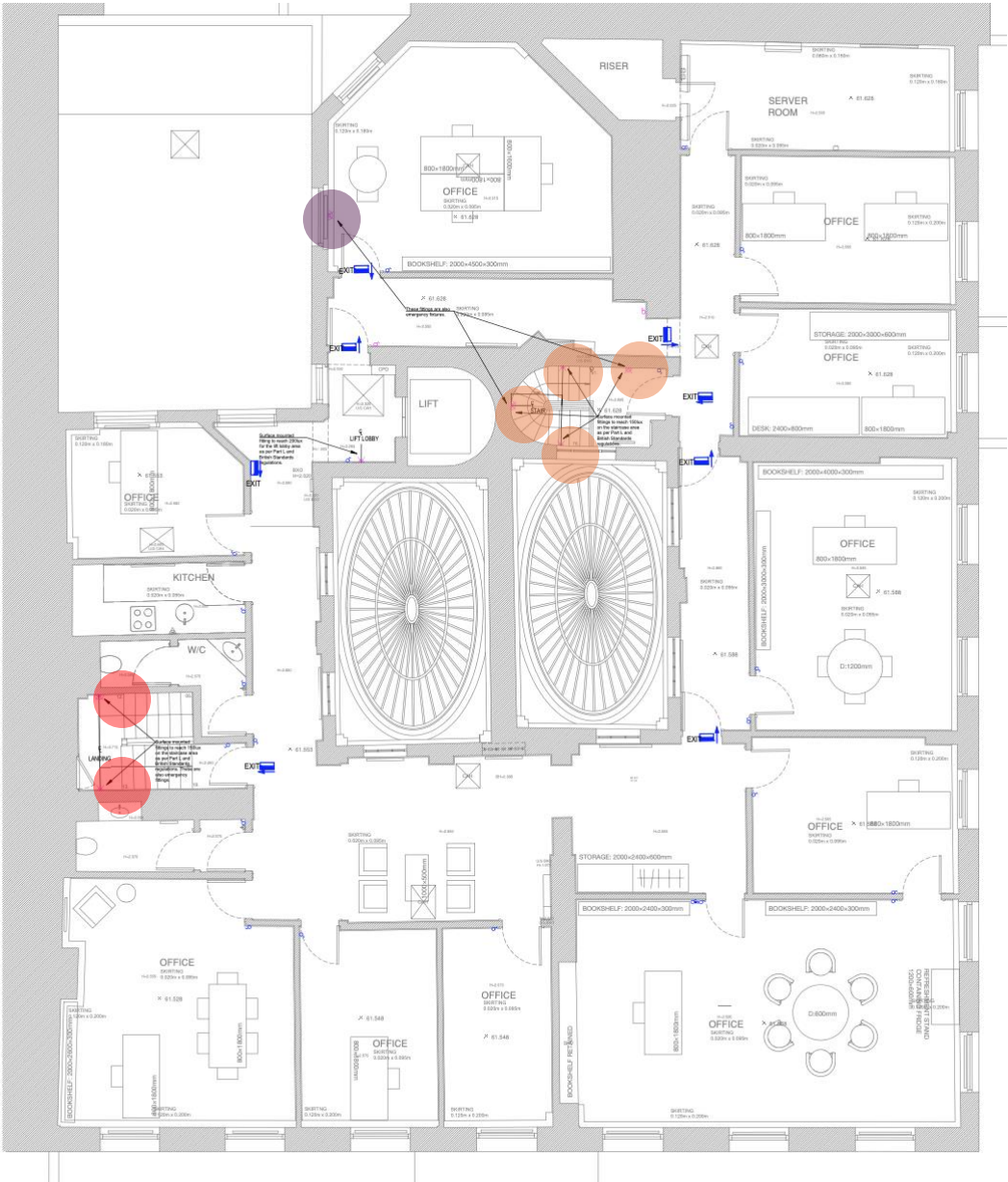
**Fixture D2**  
XAL - Sasso 60 Square Wall washer -  
Square ceiling mounted spotlight with  
wall washer lighting effect.



**TR3A + SP5, WW-12**  
Xal – Surface mounted Move it 25 + Just 55  
spot + Wall washer flush –  
Surface mounted track system for use with  
track mounted spotlights and linear wall  
washer.



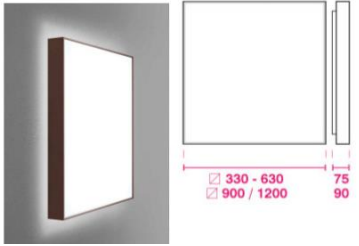
3<sup>rd</sup> Floor – Low level Plan



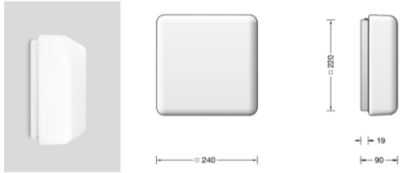
**Fixture WL5 & WL5-E**  
Optelma Compact+ Wall - Wall  
mounted fitting with uplighting  
and downlighting effect.  
WL5-E: also emergency.



**Fixture WL4 & WL4-E**  
Optelma Xata  
Wall mounted fitting for  
diffused lighting effect, 19W.  
WL4-E: Emergency fitting.  
White finish (not as per photo)



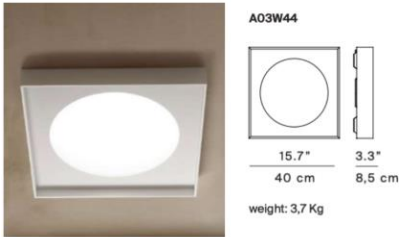
**Fixture WL6-E**  
Bega 50 300 k27 –  
Wall mounted fitting for  
diffused lighting effect, 9.5W.  
Emergency fitting.



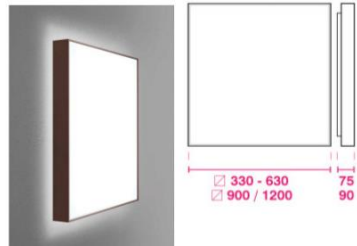
3<sup>rd</sup> Floor – Reflected Ceiling Plan



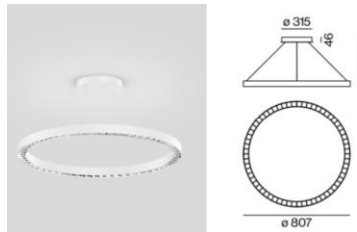
**Fixture CL2**  
Luceplan Cassette –  
Surface mounted ceiling lamp  
for diffused general lighting



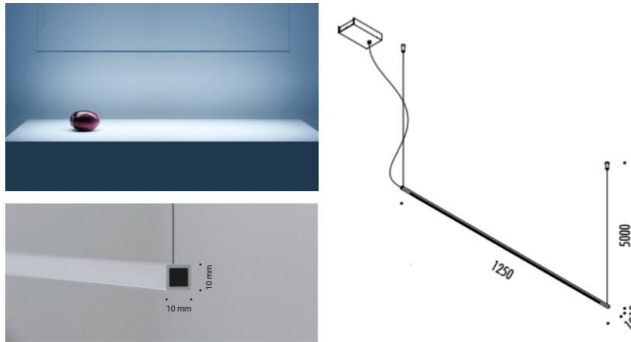
**Fixture CL5**  
Optelma Xata Wall –  
Surface mounted ceiling lamp  
for diffused general lighting.  
White finish (not as photo)



**Fixture PL9**  
Xal - Beto circle 800 –  
Ring shaped suspended light for  
office work, with direct emission.



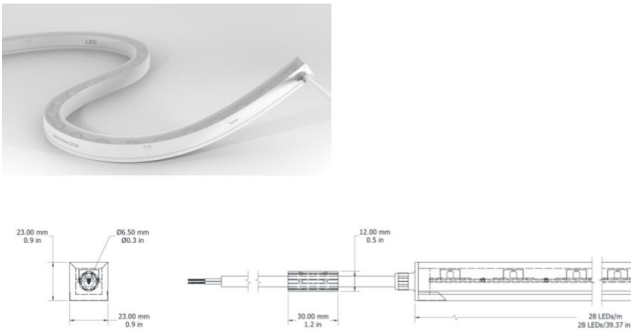
**PL10**  
Davide Groppi - Shangai Suspended –  
Extremely thin aluminium profile for minimal  
application, direct emission.



**Fixture PL11**  
Manufacturer & spec TBC –

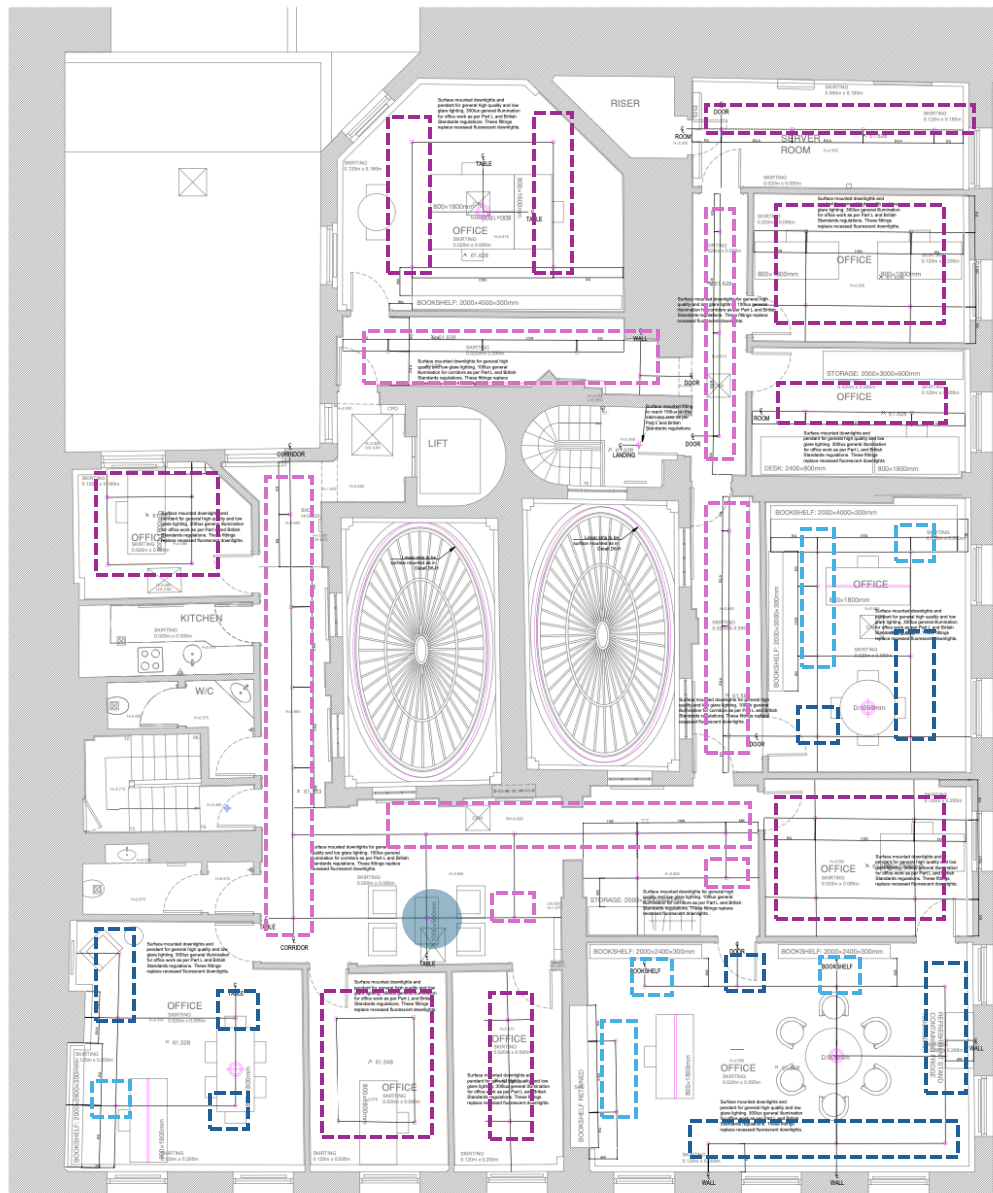


**L3**  
Ledflex – Optico Neon 23 3D–  
LED strip + profile fitting for seamless application,  
with 30° optics.





3<sup>rd</sup> Floor – Reflected Ceiling Plan



D

Fixtures D & D1

XAL - Sasso 60 Square Downlight -  
Square ceiling mounted spotlight for  
diffused general lighting into offices.  
Ref. D: 44deg beam  
Ref. D1: 51deg beam.



R1

Fixtures R1 & R2

XAL - Sasso 60 Round Adjustable-  
Ceiling rccessed trimless downlight  
for general lighting into offices.  
Ref. R1: various beams  
Ref. R2: wall washer.

