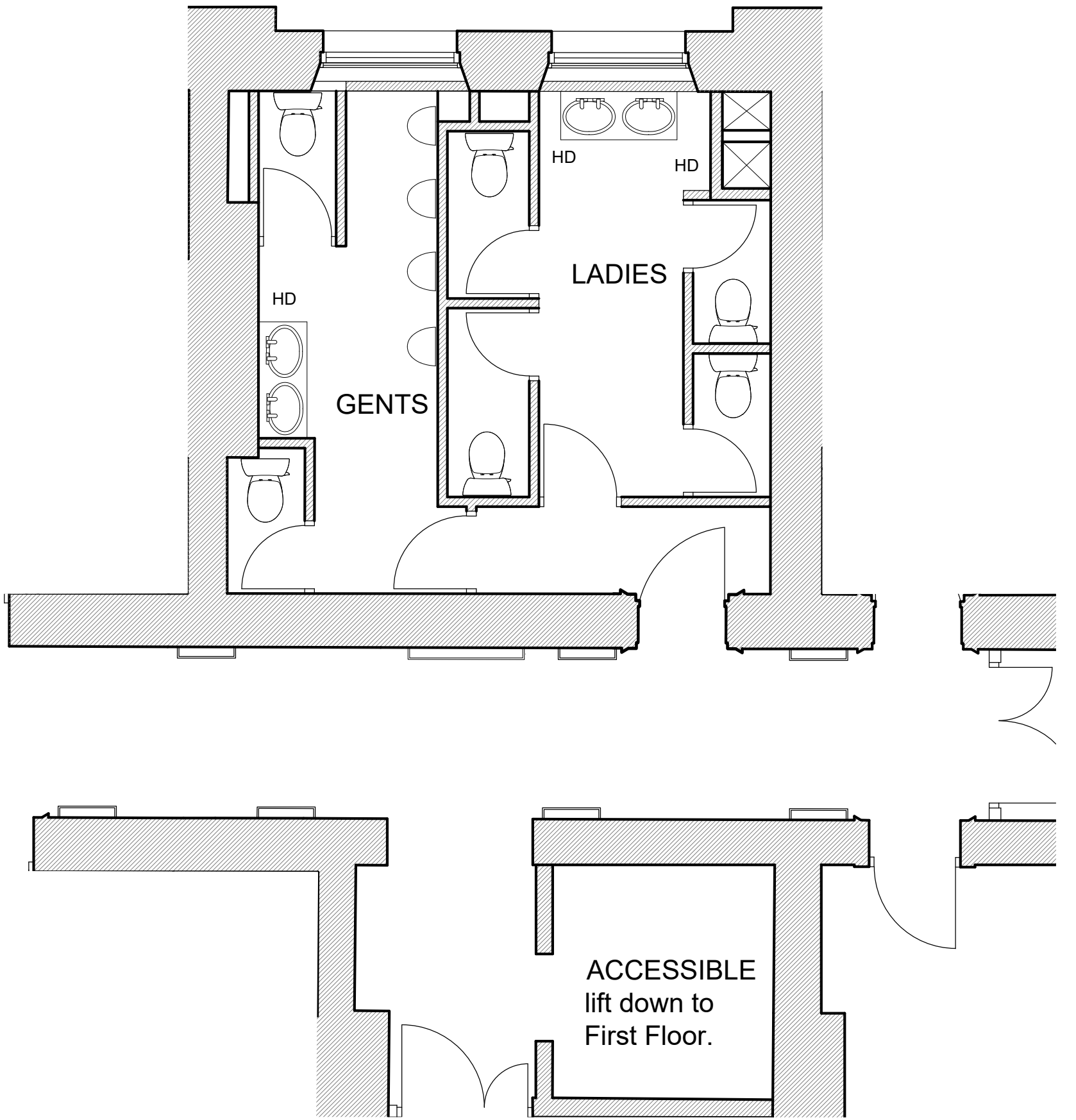
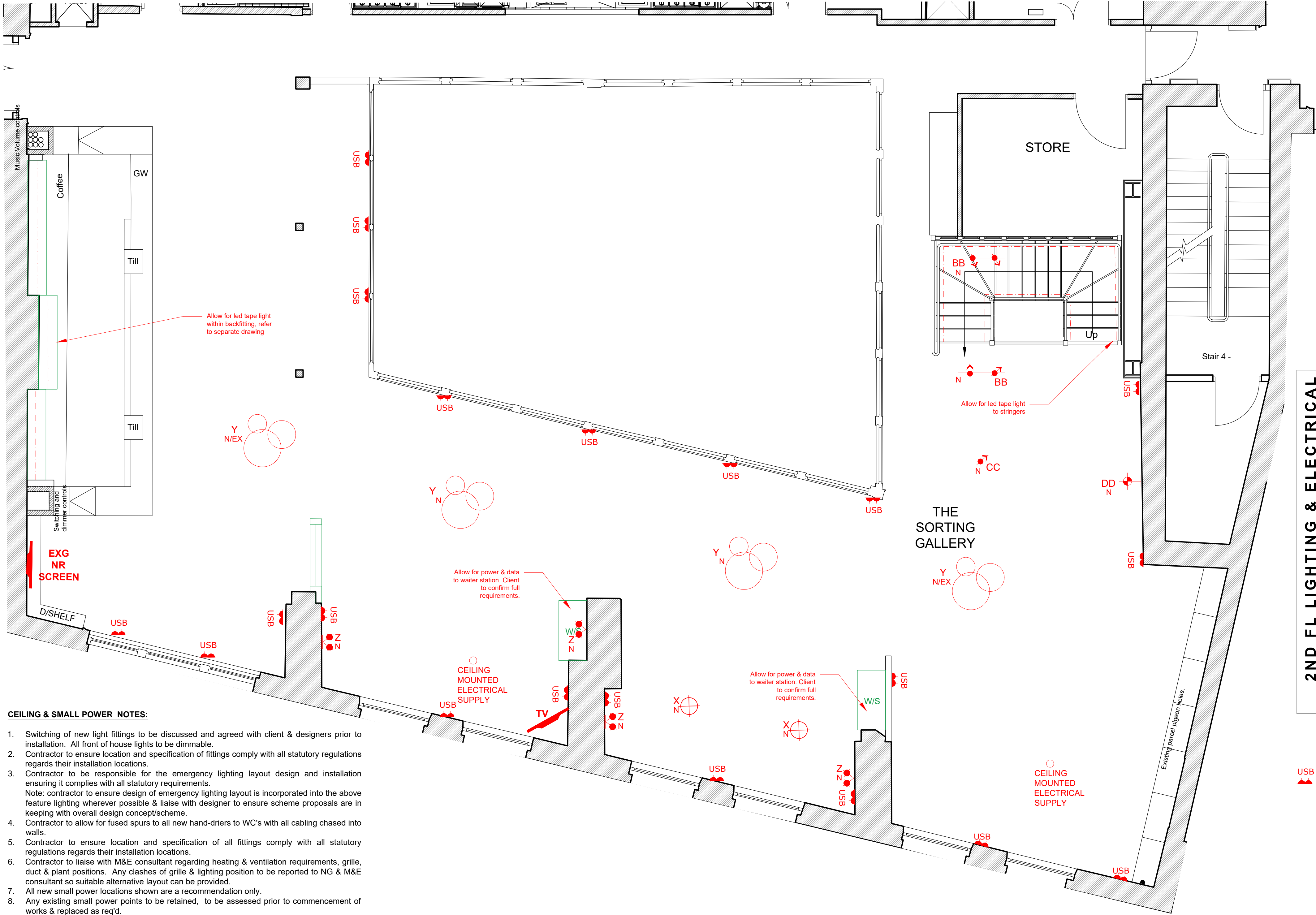


This drawing should be read in conjunction with all drawings prepared as part of the detail design package. Ensure site dimensions are checked prior to manufacture and installation. Ensure all joinery is restrained to structural envelope as necessary. All finishes to be applied as manufacturers instructions.

These drawings are for design intent purposes only. Contractor to develop construction design accordingly.



spec.	symbol	description
Y		Pendant cluster
Z		Double wall light
BB		Directional spot on track
CC		Directional spot
DD		Single wall light
		LED tape lighting within joinery, supplied & installed by electrical contractor. See separate drawings for exact position.
ALL EXISTING LIGHTING POINTS TO REMAIN AS EXISTING		
NEW LIGHT POINTS TO NEW POSITIONS TO BE TAKEN FROM EXISTING POINT IN SURFACE MOUNTED CONDUIT TO MATCH EXISTING / WITHIN EXISTING CABLE TRAY		

NEW 13AMP TWIN SOCKET WITH USB OUTLET.
ALL OUTLETS TO BE LOCATED LOW LEVEL
SURFACE WIRE IN CONDUIT FROM EXISTING
POINT.
ALL EXISTING SMALL POWER POSITIONS
RETAINED AS EXISTING

Rev.	Revision	Details	xx	00.00.00
			Initials	Date

newman|gauge

E.design@newmangaugae.com T. 0121 212 9800
47A George St. Birmingham B3 1QA
newmangaugae.com

Client

FULLER'S

Project

**THE PARCEL YARD
KINGS CORSS STN**

Drawing Title

**SECOND FLOOR
LIGHTING & ELECTRICAL**

Project Type

LANDLORDS APPROVAL

Date	Scale	Drawn By
MAR'25	1:50@A1	SMP
Project No.	Drawing No.	Revision
3185	0073	

This drawing is the property of NEWMAN GAUGE DESIGN ASSOCIATES. Copyright is reserved by them and the drawing is issued on the condition that it is not copied either wholly or in part without the prior consent in writing of Newman Gauge Design Associates. All dimensions are to be checked on site prior to the commencement of any work or shop drawings. This drawing is to be read in conjunction with other drawings and specifications where existing.

0 1 2 3 4 5
1:50 metres