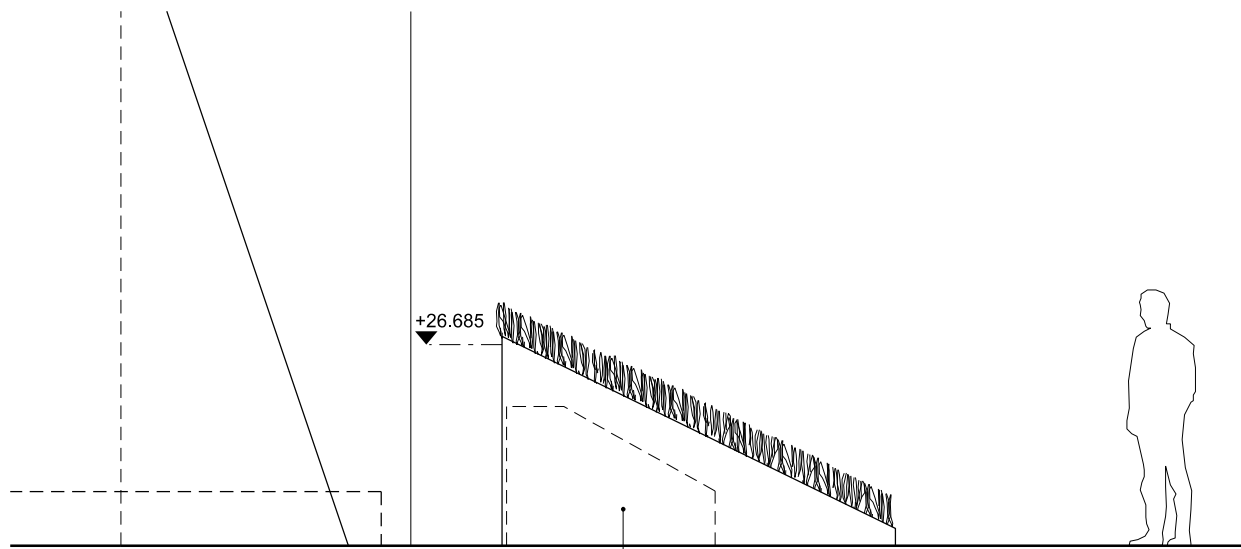


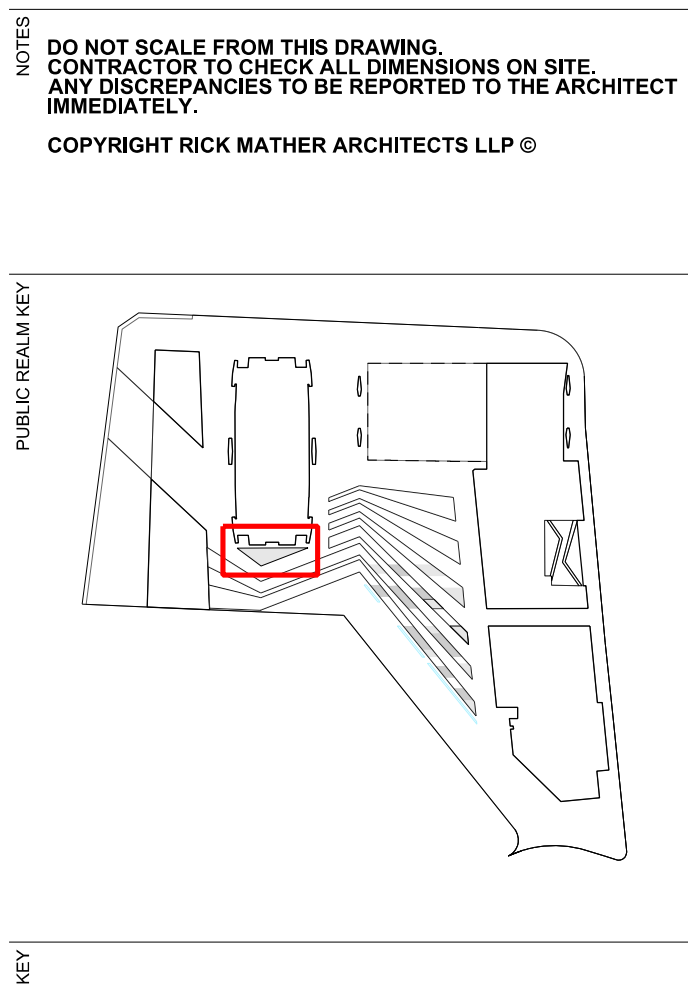
Proposed Elevation - South

01 647-17303

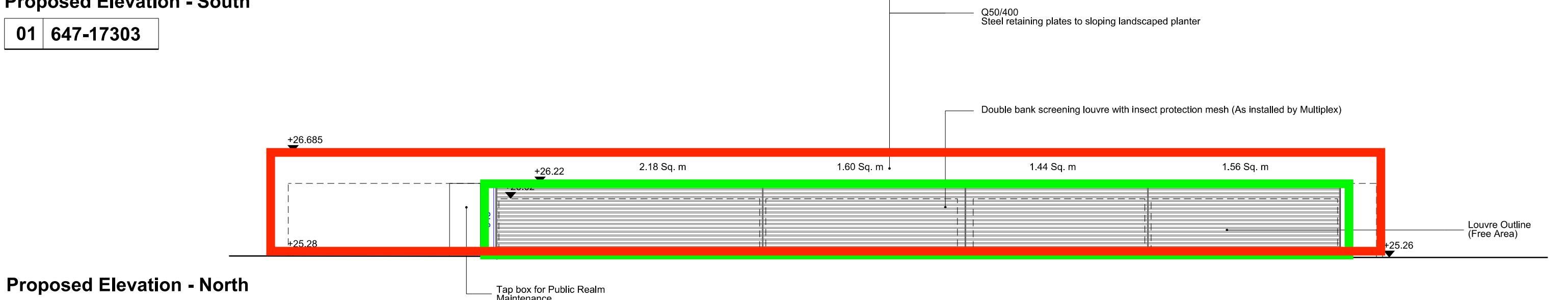


Proposed Elevation - West

03 647-17303

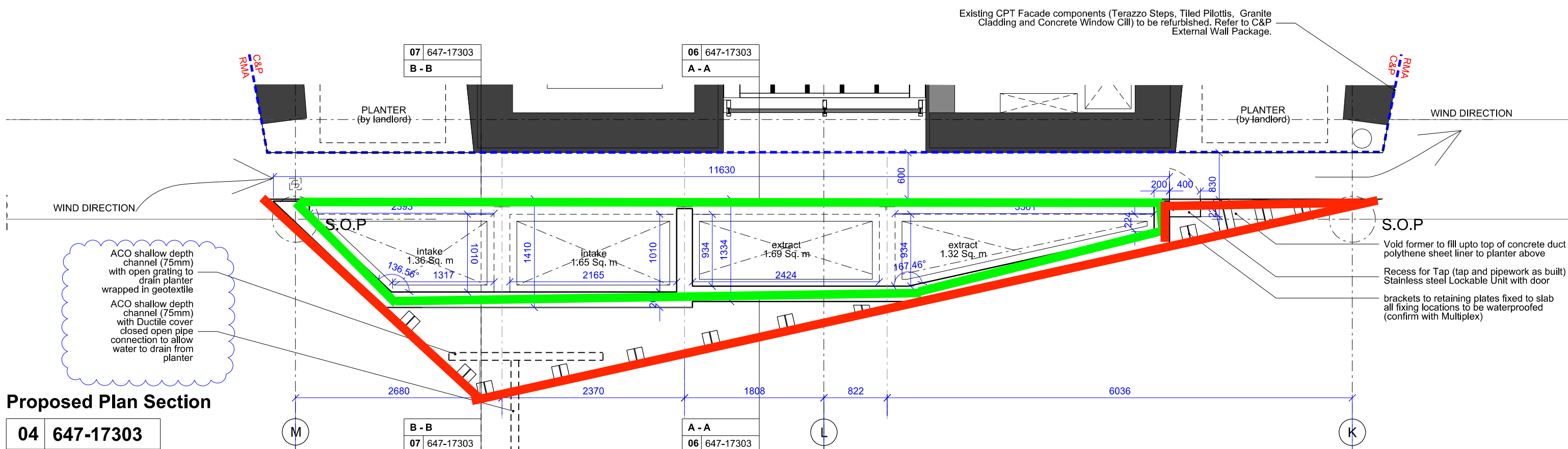


KEY



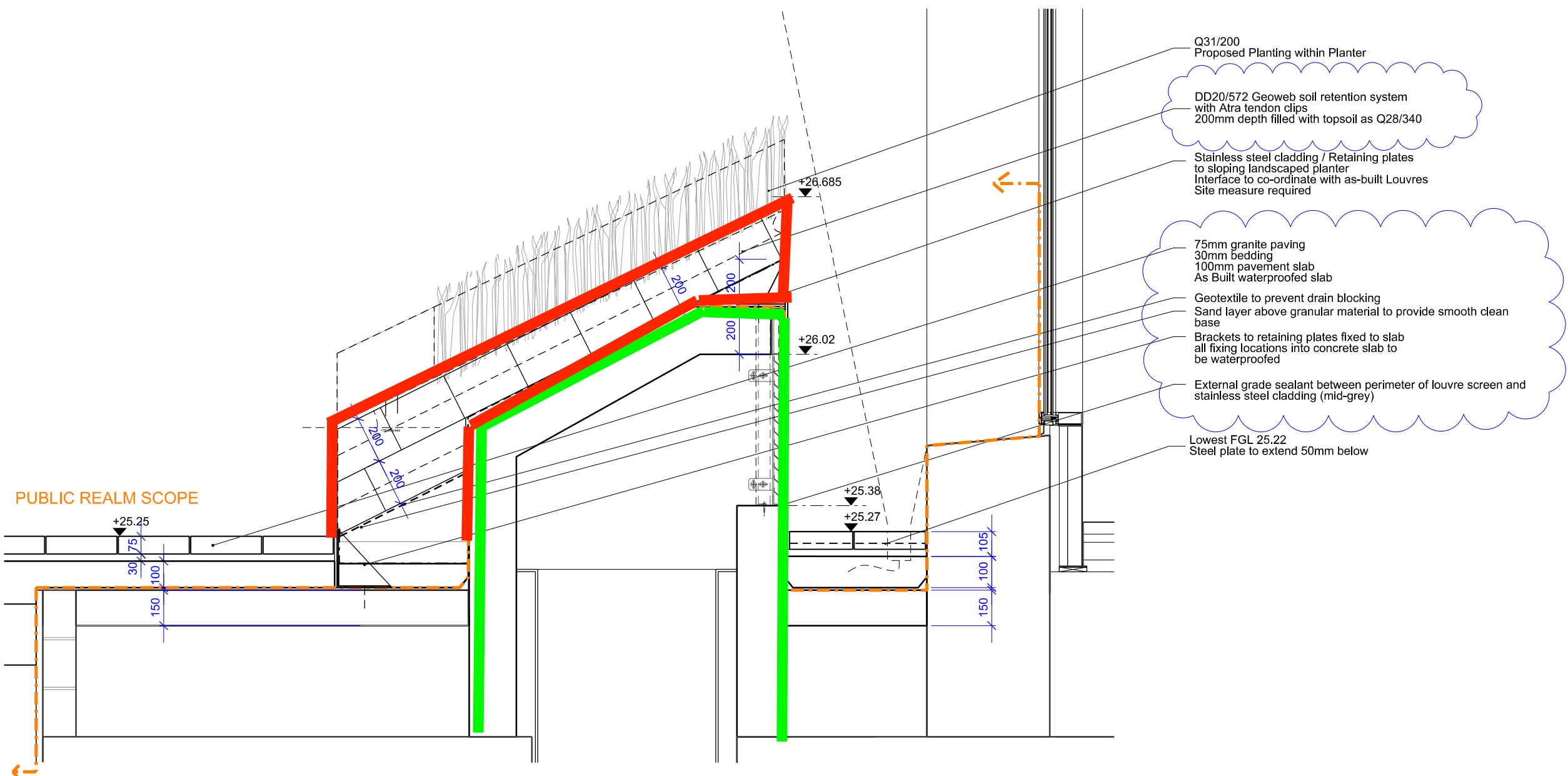
Proposed Elevation - North

02 647-17303



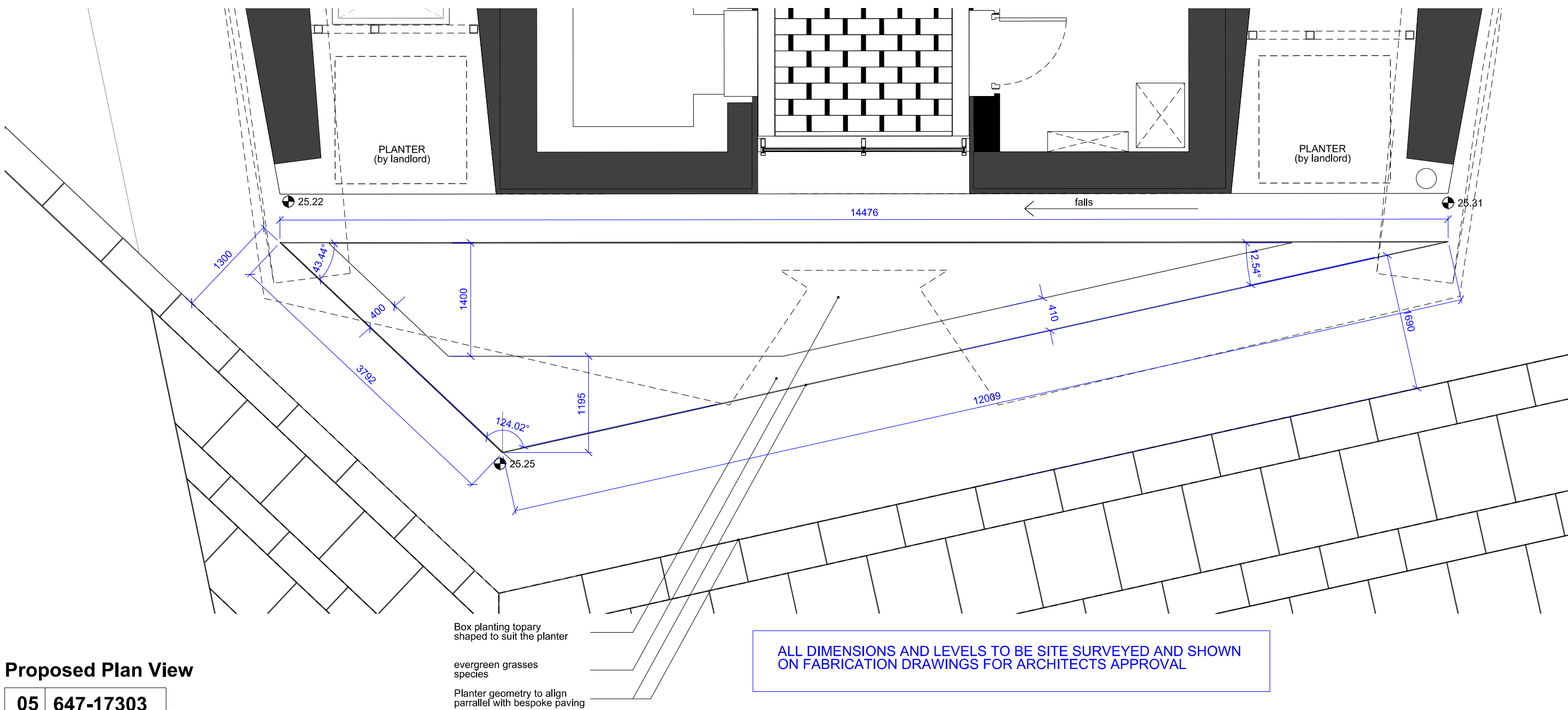
Proposed Plan Section

04 647-17303



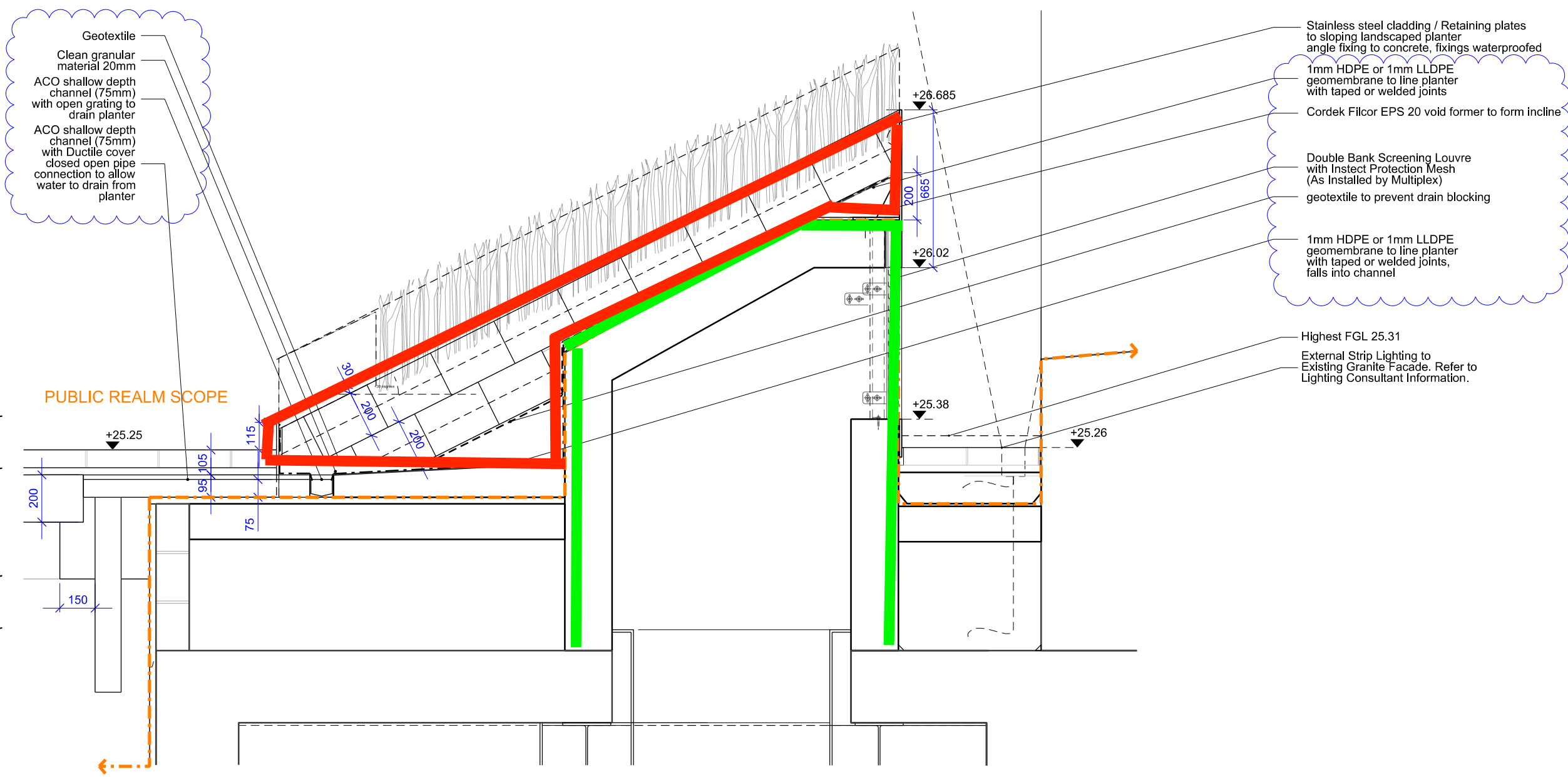
Proposed Section AA

06 647-17303



Proposed Plan View

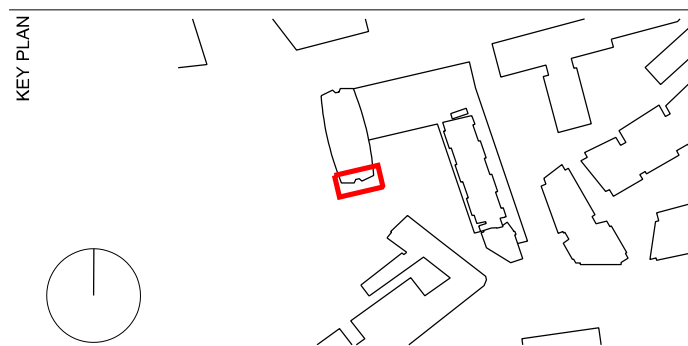
05 647-17303



Proposed Section BB

07 647-17303

REVISIONS		
C2	28.03.19	Issued for Construction
C1	21.06.18	ISSUED FOR CONSTRUCTION
T1	20.07.17	Issued for Tender
REV	DATE	DESCRIPTION



STATUS

CONSTRUCTION

RICK MATHER ARCHITECTS ©

123 Camden High Street London NW1 7JR
T: 020 7284 1727 F: 020 7281 7826
info@rickmather.com www.rickmather.com

JOB #

ST. GILES SQUARE
New Oxford Street
London

TITLE

LANDSCAPING
UKPN PLANTER
CENTRE POINT AMALGAMATED

DRAWN	US	JOB #	647	DRG #	17303	REV	C2
CHECKED	GM	SCALE	A1	DATE	MAR 14	REV DATE	28.03.19