

Prior to commencement of development, full details in respect of the living roof in the area indicated on the approved roof plan shall be submitted to and approved by the local planning authority. The details shall include

- i. a detailed scheme of maintenance*
- ii. sections at a scale of 1:20 with manufacturers details demonstrating the construction and materials used*
- iii. full details of planting species and density*



Proposed roof plan showing sedum roof

Proposed System - BauderEXTENSIVE LIGHTWEIGHTsedum

	Function	Product name	Thickness (mm)	Weight (kg/m ²)
1	Vegetation*	BauderGREEN XF 301 Sedum Blanket*	28	44
2	Edge trim	BauderGREEN AL 40 drainage trim	40	Nominal
3	Drainage Mat	BauderGREEN SDF drainage and protection mat	20	0.6
4	Underlying Waterproofing	Bauder's underlying waterproofing system	Not Included	Not Included
System Build-up			48	45

Extensive lightweight sedum system



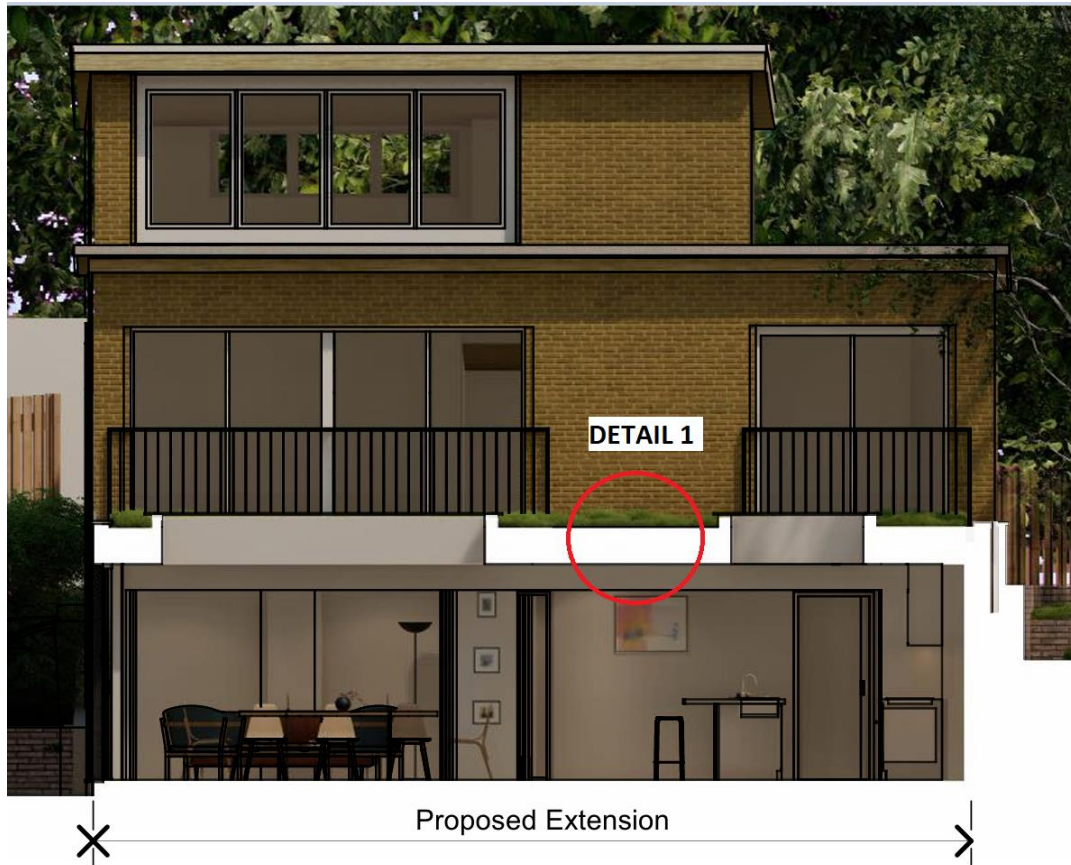
Maintenance

The roof shall be maintained/inspected twice a year to remove unwanted weeds and seedling.

Remove all dead vegetation and debris from the roof surface, taking particular care to ensure that all chute outlets, gutters and downpipes are clear.

Formulated fertiliser are applied once a year to specialist's specifications to the green roof and to be applied during March/April, to helps the plants to prepare for extreme weather conditions.

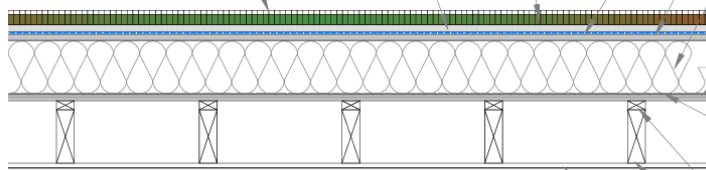
Sedum roof to be irrigated during extreme draught weather or prolonged dry weather



BauderGREEN XF 301 - Lightweight sedum blanket system including integral moisture mat

BauderGREEN SDF - Lightweight drainage and protection mat. Nylon loop mesh between two layers of geotextile fleece

BauderGREEN AL40 - 40mm high edge trim



Fully adhered Sarnafil single ply membrane to manufacturers details

18mm WPB ply deck

150mm Kingspan Thermaroom TR27

18mm WPB ply deck

Sarnafil Vapour control layer to manufacturers specification

Timber furring pieces laid to 1:80 falls on ceiling joists

Proposed 150x50 C24 flat roof Joists @ 400c/c

Plasterboard + skim finish

DETAIL 1 (1:20)
Green Roof Construction