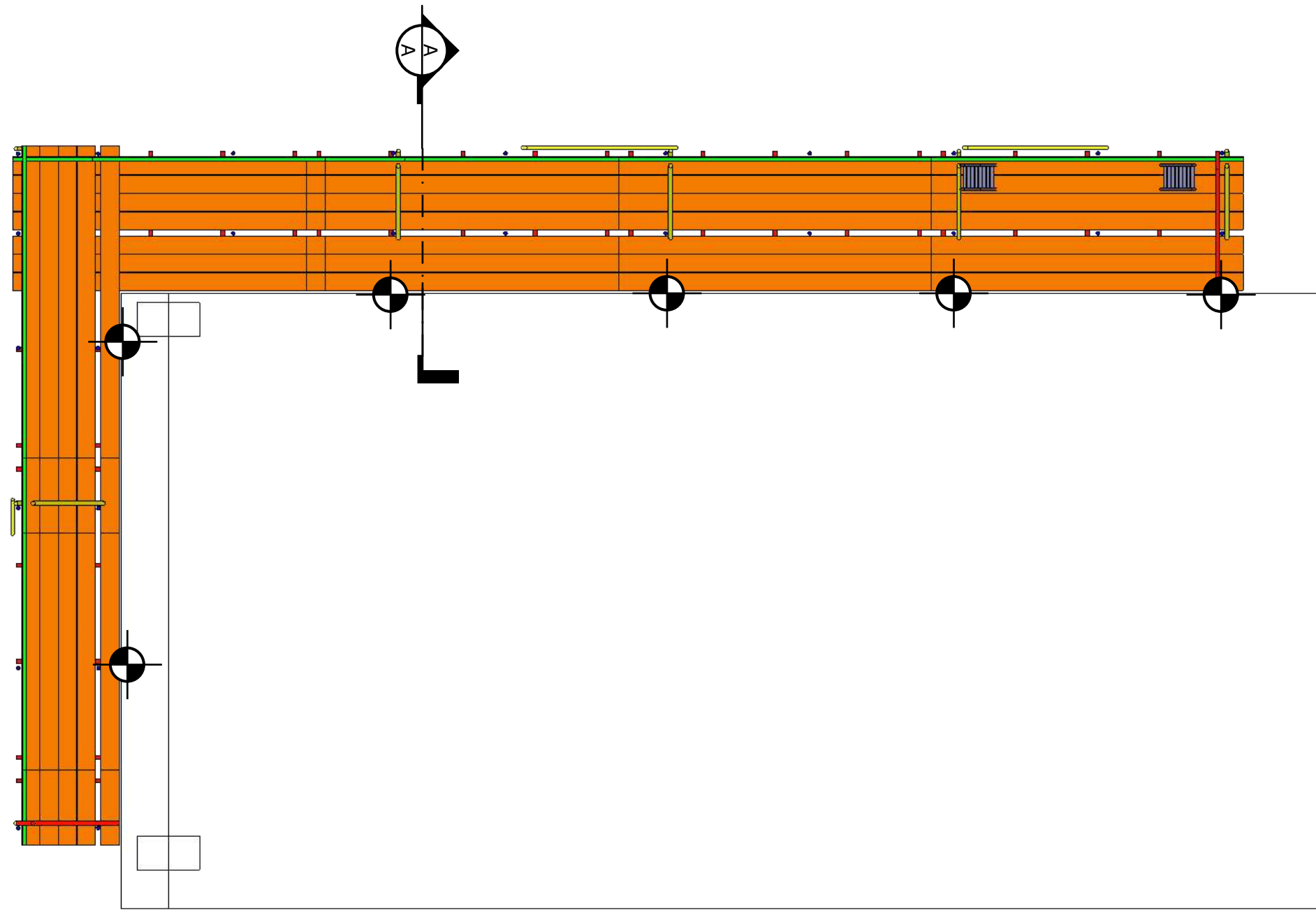
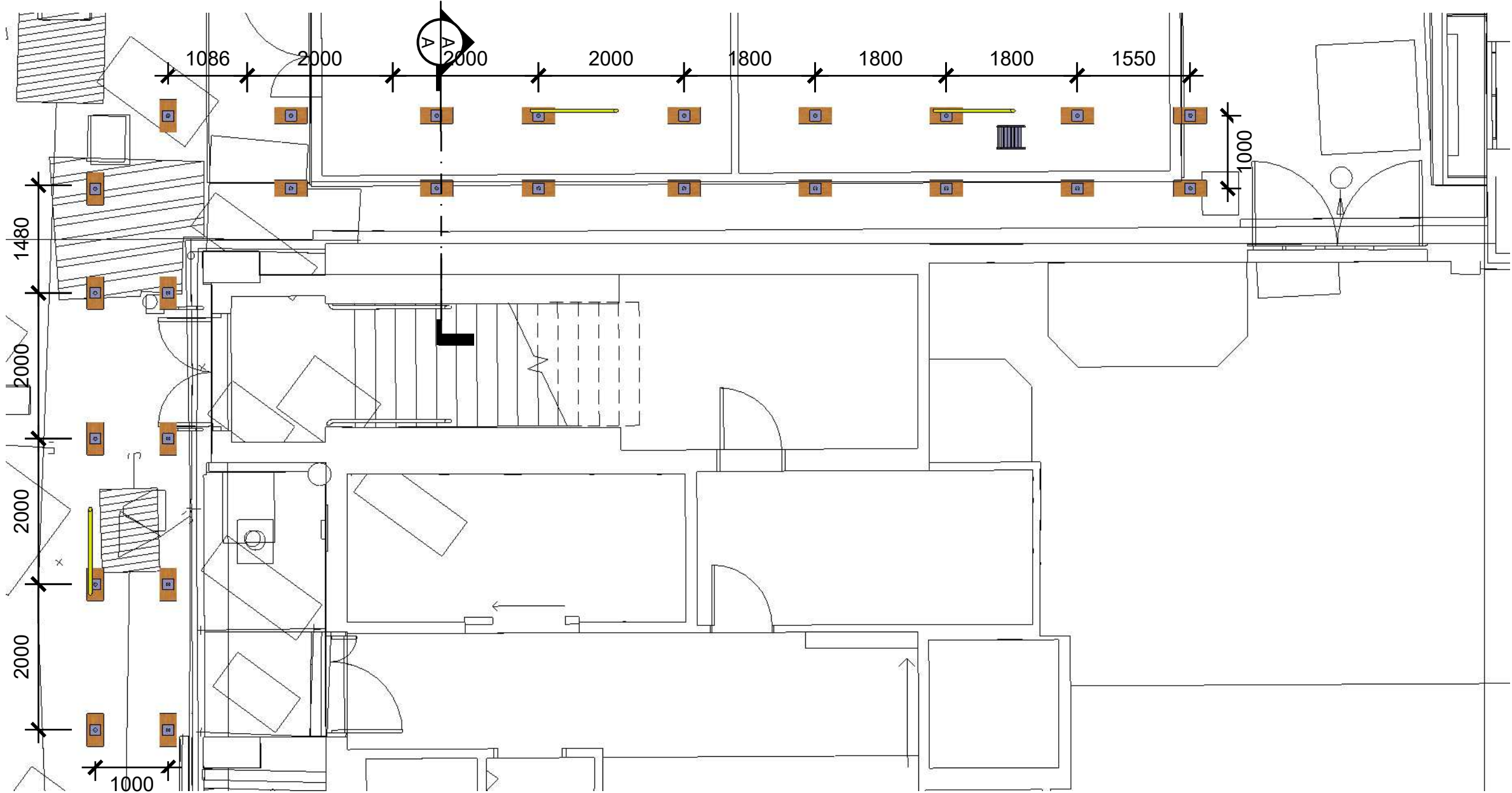


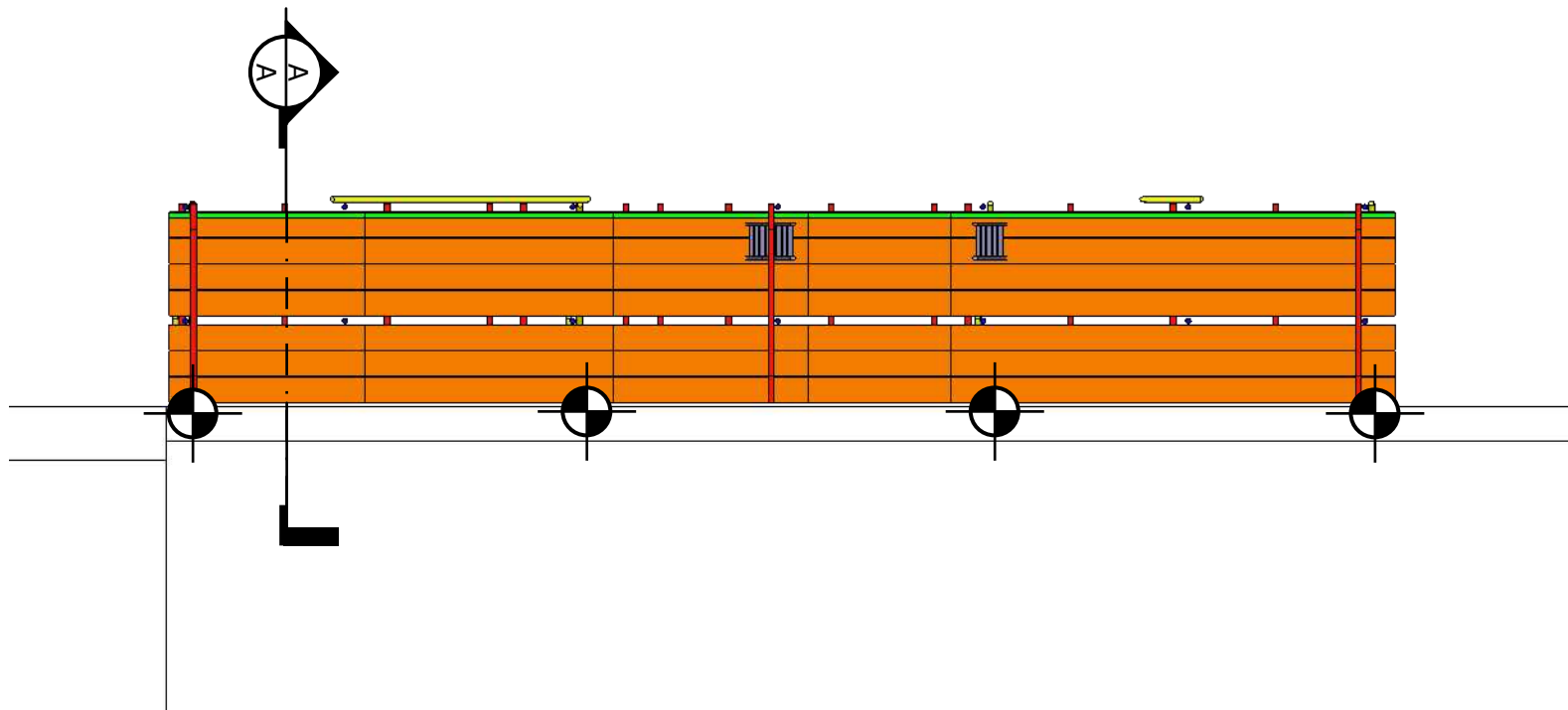
SECOND LIFT PLAN



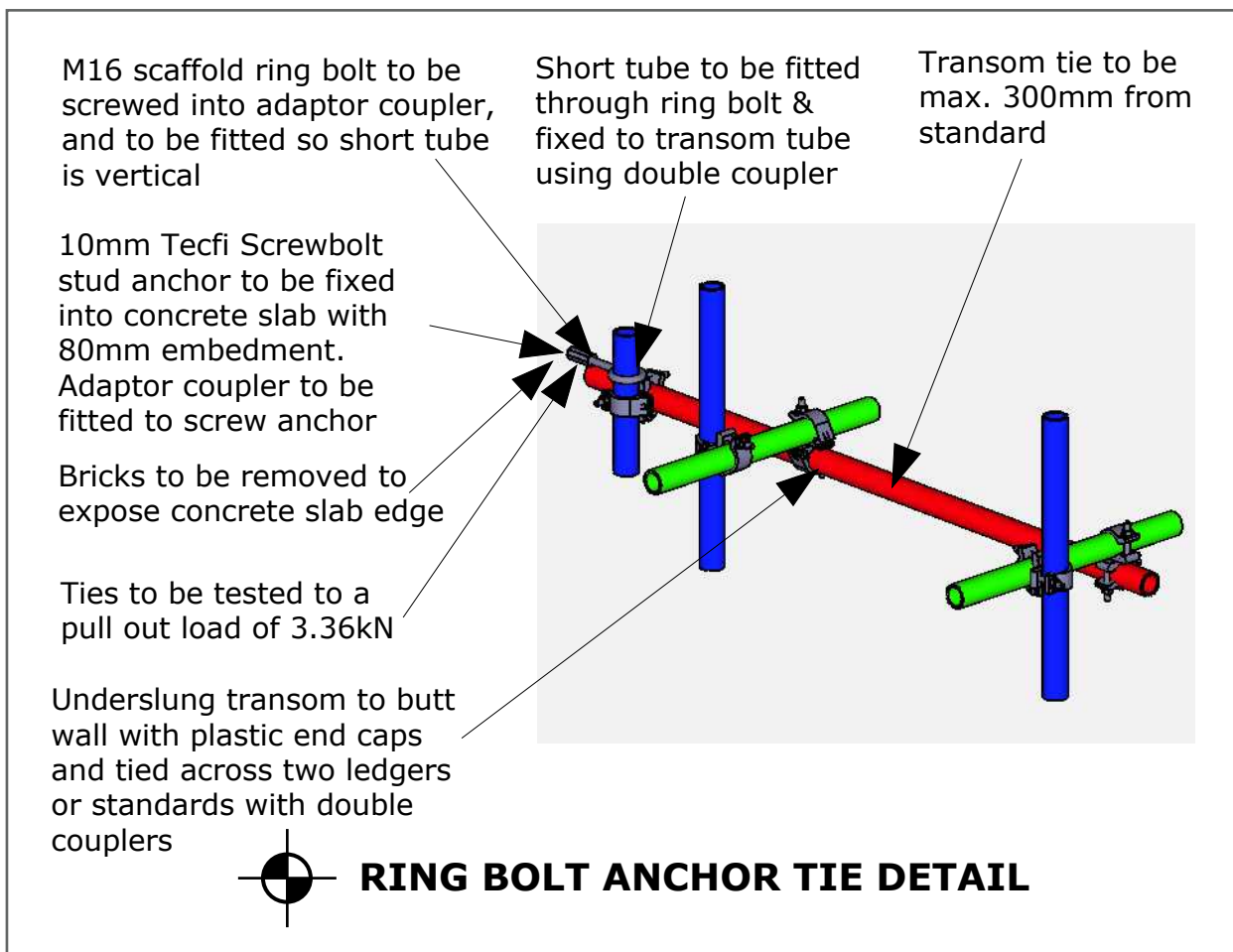
THIRD LIFT PLAN



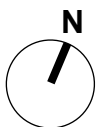
GROUND FLOOR PLAN



TOP LIFT PLAN



Rev	Date	By	Comments
a	16/03	CJB	Tie positions moved - Preliminary drg
b	26/03	CJB	Tie detail & loads updated - Preliminary drg



GENERAL NOTES

- A. This drawing is confidential and the exclusive property of the Client. No unauthorised use, copy or disclosure is to be made and it is to be returned upon request.
- B. All services, plant, equipment and materials supplied are subject to our conditions of Contract, Hire or Sale as applicable.
- C. This drawing has been prepared from details supplied to us by the enquirer/ client, who should check that we have correctly interpreted their requirements, and that all loadings, dimensions, details, erection and striking sequences are correct and practicable. No alterations may be made without reference to the Client.
- D. The Client is to prepare and ensure that the foundations are suitable for supporting the loads imposed upon it by our scaffold including its working load.
- E. No sheeting whatsoever, unless already shown, will be added to the scaffold without reference to the Client.
- F. It is the responsibility of the enquirer / Client to ensure that adequate facilities for tying the scaffold are made available and that the building or structure is capable of withstanding the loads applied to it by the scaffold and its working load.
- G. No ties or braces are to be removed or any modifications to be made to the scaffold without reference and approval from the Client.
- H. The enquirer / Client is to design, supply and fix all necessary auxiliary equipment, including, but not limited to, shuttering, timbers, bearers, steel joists and to ensure that such auxiliary equipment is capable of safely transmitting the loads to the standards.
- I. The enquirer/ Client will be responsible for the setting out and final levelling of scaffolding or similar equipment used as a system of support.
- J. All dimensions are as stated or as calculated. Drawing must not be scaled.
- K. This drawing has been prepared on the assumption that all loads will be applied axially to the tubes unless stated otherwise.
- L. Scaffold has been designed in accordance with TG20:21.
- M. The enquirer / Client to ensure that the loads as stated on the drawings are adequate for the works. Scaffold Designers Ltd to be advised if these loads are not acceptable, or if there any specific loading requirements.
- N. Scaffold Designers Ltd will not accept liability for the scaffold design should the scaffold structure be erected with Tender, Preliminary or Approval drawings.
- O. Scaffold Designers Ltd have provided this drawing from information provided and to the best of our knowledge and experience. Scaffold Designers Ltd will not accept any additional costs if the design does not cover all requirements unless raised prior to the issue of working drawings. Any additional items or revisions will be at the liability of the Client or Scaffold Contractor.
- P. Any discrepancies or revisions required to be advised and agreed with Scaffold Designers Ltd before they are commenced. Scaffold Designers Ltd will not accept any charges if they are not agreed first.
- Q. Scaffold Designers Ltd will not accept liability for any damage to the ground or building structure from the scaffold standards, ties, props or other support due to the movement and loads applied by the scaffold.
- R. Scaffold Designers Ltd will not accept liability if the scaffold has not been built as per the drawing and design details.

SPECIAL NOTES

NOTE : Scaffold has been designed for a maximum imposed load of 1.50 kN/sq.m. on one number working lift at any one time and one access lift of 0.75 kN/sq.m. Inside boards have been designed for a maximum imposed load of 0.75 kN/sq.m.

Not for construction until over printed working drawing

PRELIMINARY DRAWING

Any Queries relating to this drawing should be directed to the Christchurch Design Office 01425 283988



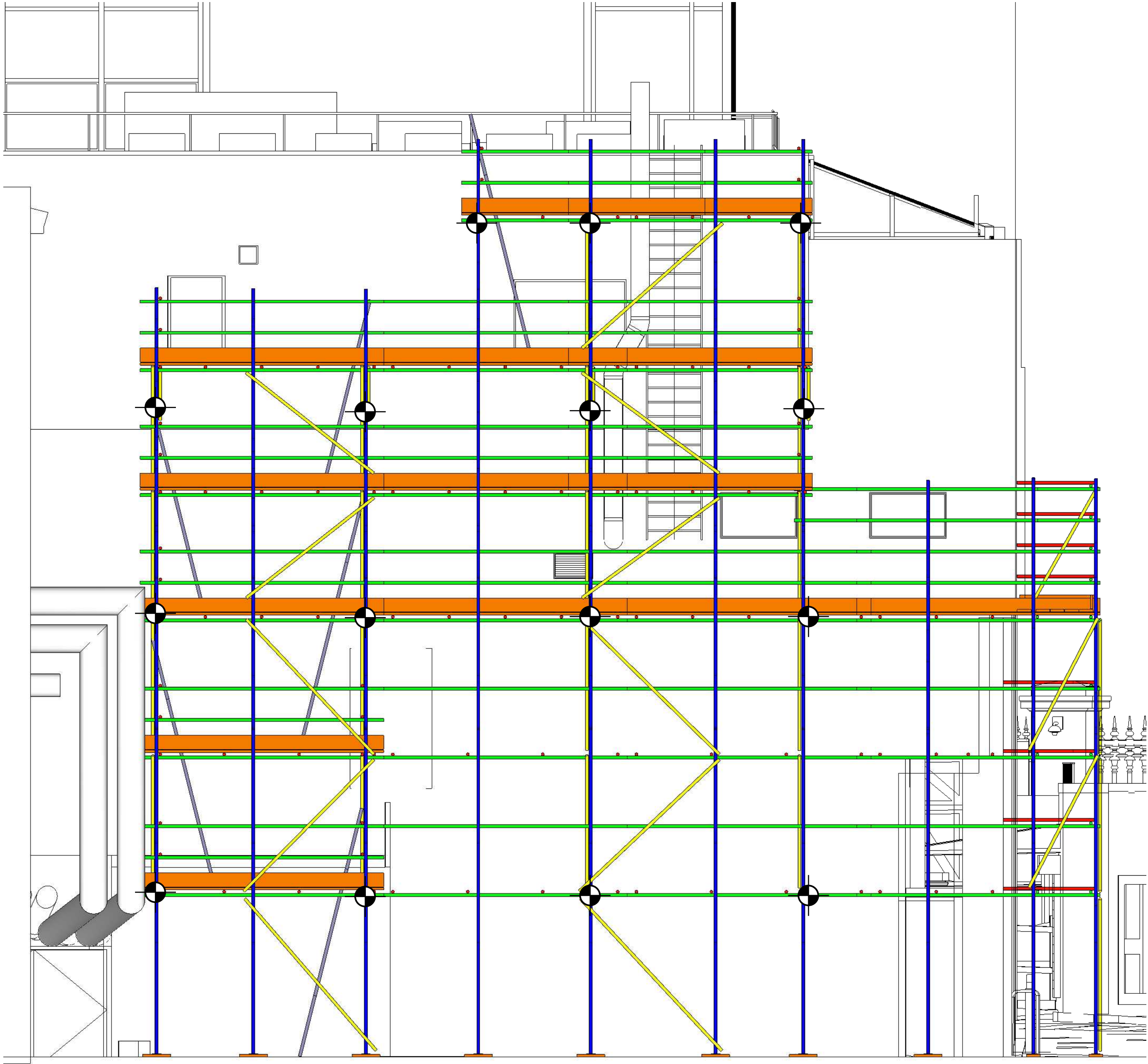
DESIGNER: **SCAFFOLD DESIGNERS LTD**
Unit 6A, Priory Industrial Estate, Airstead Road
Christchurch, Dorset. BH23 4HD.
Tel : 01425 283988 www.scaffolddesigners.co.uk

TITLE : **INDEPENDENT ACCESS SCAFFOLD**
NEW WING, BRITISH MUSEUM LONDON

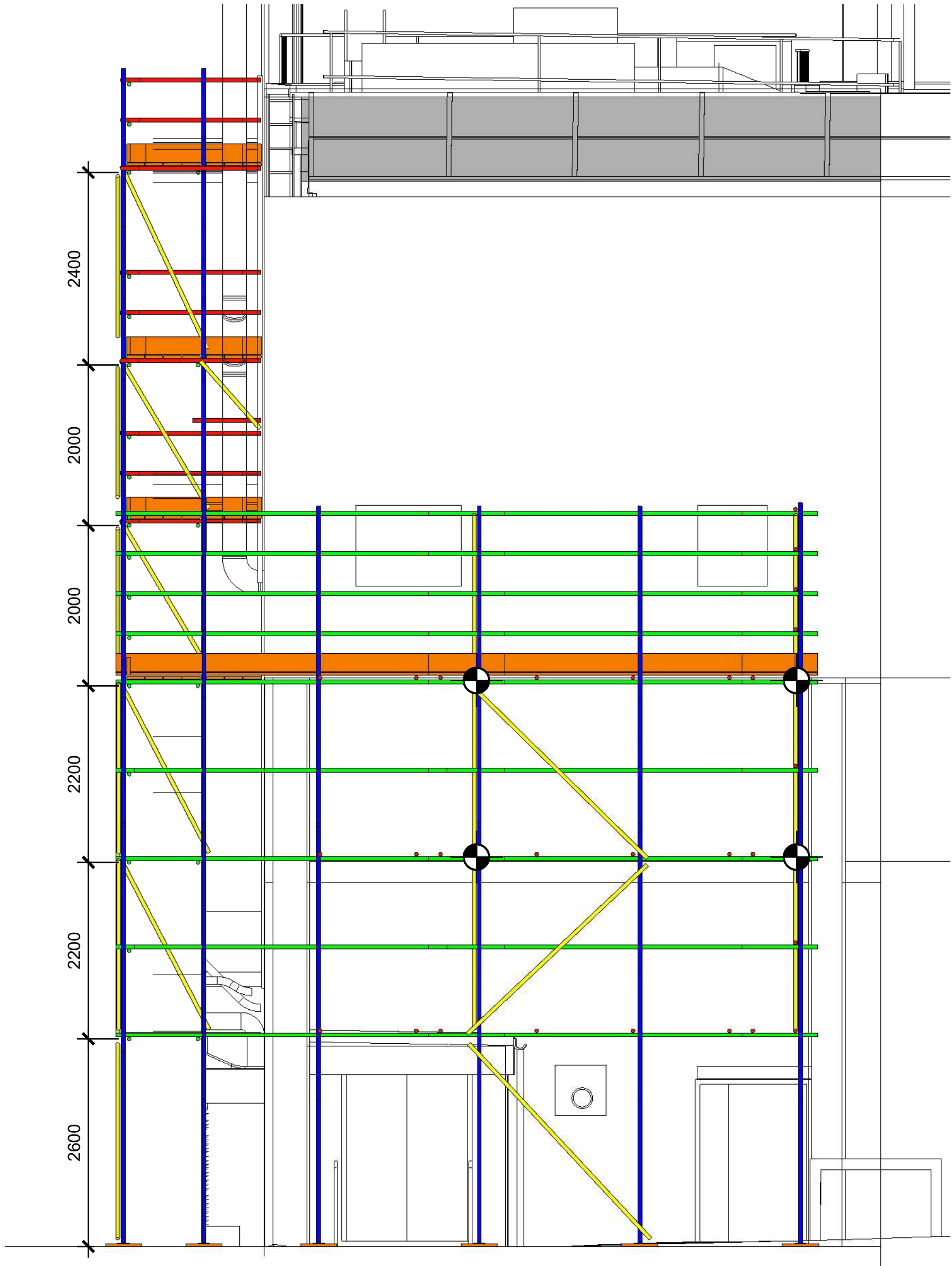
CLIENT : **T.B.A.**

DRAWN BY : **CJB** CHECKED BY : **---** DATE : **29th Jan 2025**

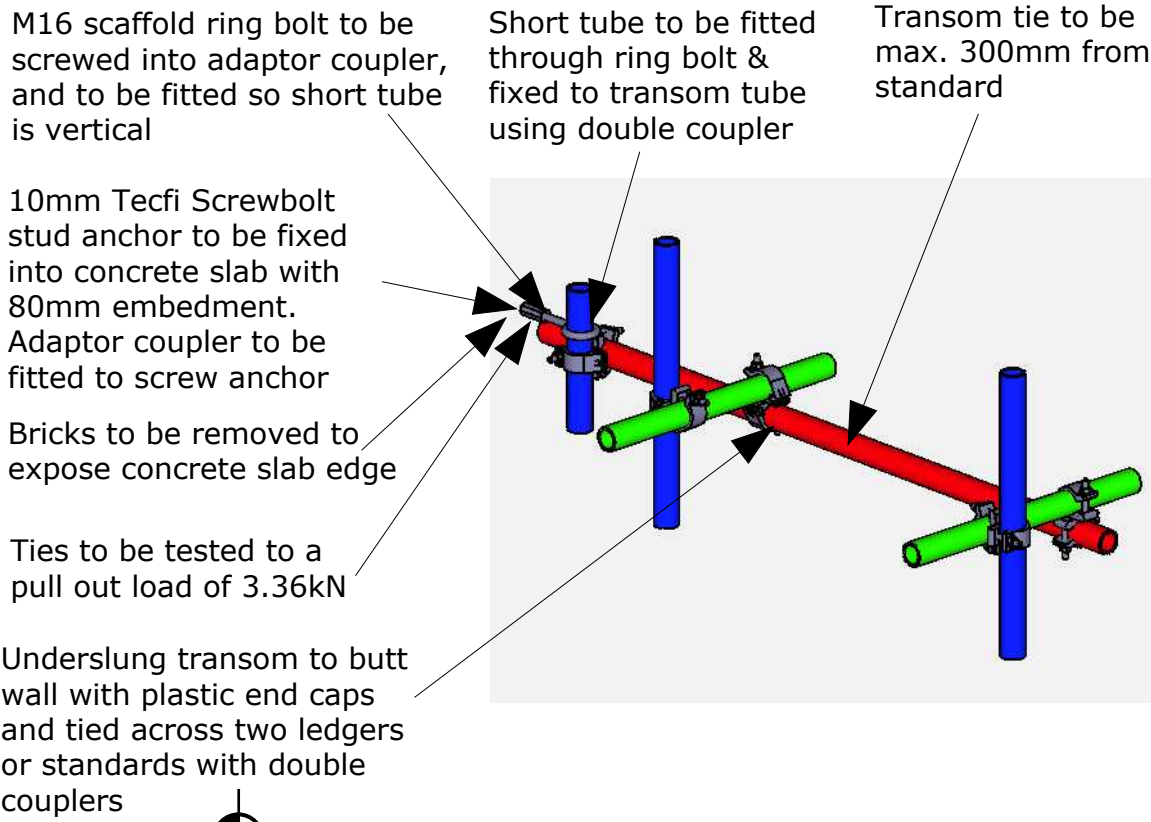
SCALE : **1:66 at A1** DRAWING : **9045-24-06b**



NORTH ELEVATION



WEST ELEVATION



- GENERAL NOTES**
- A. This drawing is confidential and the exclusive property of the Client. No unauthorised use, copy or disclosure is to be made and it is to be returned upon request.
- B. All services, plant, equipment and materials supplied are subject to our conditions of Contract, Hire or Sale as applicable.
- C. This drawing has been prepared from details supplied to us by the enquirer/ client, who should check that we have correctly interpreted their requirements, and that all loadings, dimensions, details, erection and striking sequences are correct and practicable. No alterations may be made without reference to the Client.
- D. The Client is to prepare and ensure that the foundations are suitable for supporting the loads imposed upon it by our scaffold including its working load.
- E. No sheeting whatsoever, unless already shown, will be added to the scaffold without reference to the Client.
- F. It is the responsibility of the enquirer / Client to ensure that adequate facilities for tying the scaffold are made available and that the building or structure is capable of withstanding the loads applied to it by the scaffold and its working load.
- G. No ties or braces are to be removed or any modifications to be made to the scaffold without reference and approval from the Client.
- H. The enquirer / Client is to design, supply and fix all necessary auxiliary equipment, including, but not limited to, shuttering, timbers, bearers, steel joists and to ensure that such auxiliary equipment is capable of safely transmitting the loads to the standards.
- I. The enquirer/ Client will be responsible for the setting out and final levelling of scaffolding or similar equipment used as a system of support.
- J. All dimensions are as stated or as calculated. Drawing must not be scaled.
- K. This drawing has been prepared on the assumption that all loads will be applied axially to the tubes unless stated otherwise.
- L. Scaffold has been designed in accordance with TG20:21.
- M. The enquirer / Client to ensure that the loads as stated on the drawings are adequate for the works. Scaffold Designers Ltd to be advised if these loads are not acceptable, or if there any specific loading requirements.
- N. Scaffold Designers Ltd will not accept liability for the scaffold design should the scaffold structure be erected with Tender, Preliminary or Approval drawings.
- O. Scaffold Designers Ltd have provided this drawing from information provided and to the best of our knowledge and experience. Scaffold Designers Ltd will not accept any additional costs if the design does not cover all requirements unless raised prior to the issue of working drawings. Any additional items or revisions will be at the liability of the Client or Scaffold Contractor.
- P. Any discrepancies or revisions required to be advised and agreed with Scaffold Designers Ltd before they are commenced. Scaffold Designers Ltd will not accept any charges if they are not agreed first.
- Q. Scaffold Designers Ltd will not accept liability for any damage to the ground or building structure from the scaffold standards, ties, props or other support due to the movement and loads applied by the scaffold.
- R. Scaffold Designers Ltd will not accept liability if the scaffold has not been built as per the drawing and design details.

SPECIAL NOTES

NOTE : Scaffold has been designed for a maximum imposed load of 1.50 kN/sq.m. on one number working lift at any one time and one access lift of 0.75 kN/sq.m. Inside boards have been designed for a maximum imposed load of 0.75 kN/sq.m.

Not for construction until over printed working drawing

PRELIMINARY DRAWING

Any Queries relating to this drawing should be directed to the Christchurch Design Office 01425 283988

GSL **GRIFFIN**
Scaffolding London

332/336 Holloway Road
London
N7 6HJ **Tel : 0207 607 1651**

DESIGNER: **SCAFFOLD DESIGNERS LTD**
Unit 6A, Priory Industrial Estate, Airstead Road
Christchurch, Dorset. BH23 4HD.
Tel : 01425 283988 www.scaffolddesigners.co.uk

TITLE :
INDEPENDENT ACCESS SCAFFOLD

NEW WING, BRITISH MUSEUM
LONDON

CLIENT :
T.B.A.

DRAWN BY :
CJB

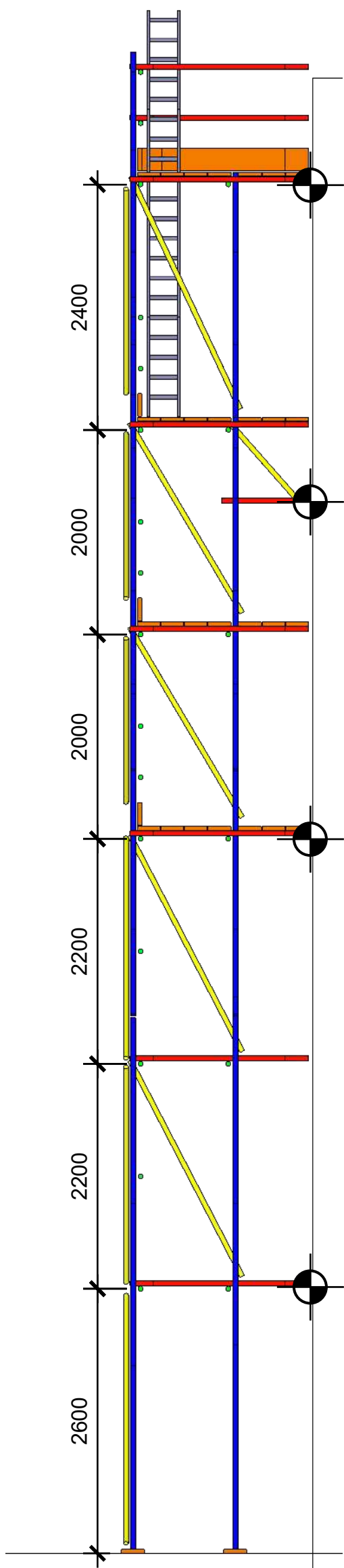
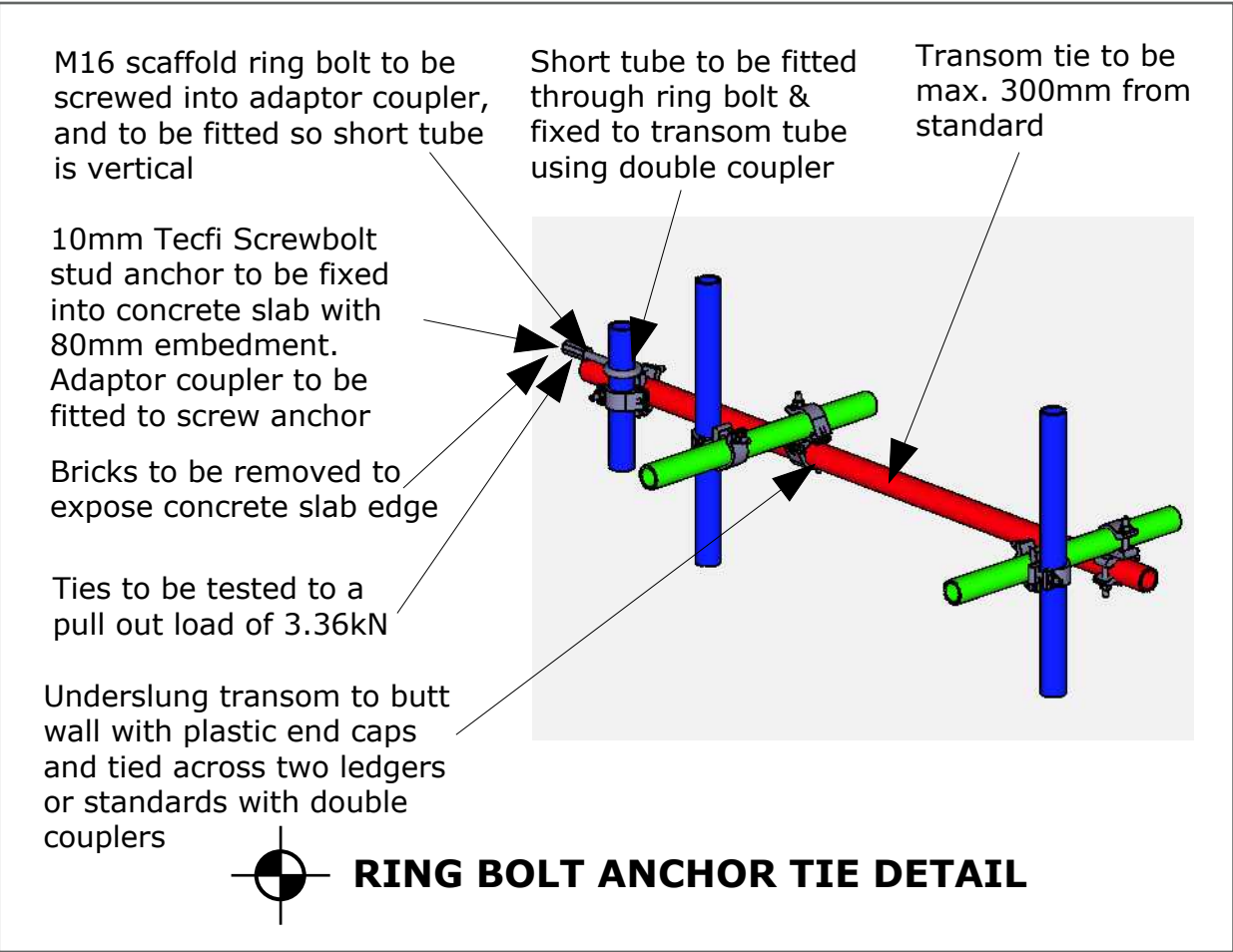
CHECKED BY :

DATE :
29th Jan 2025

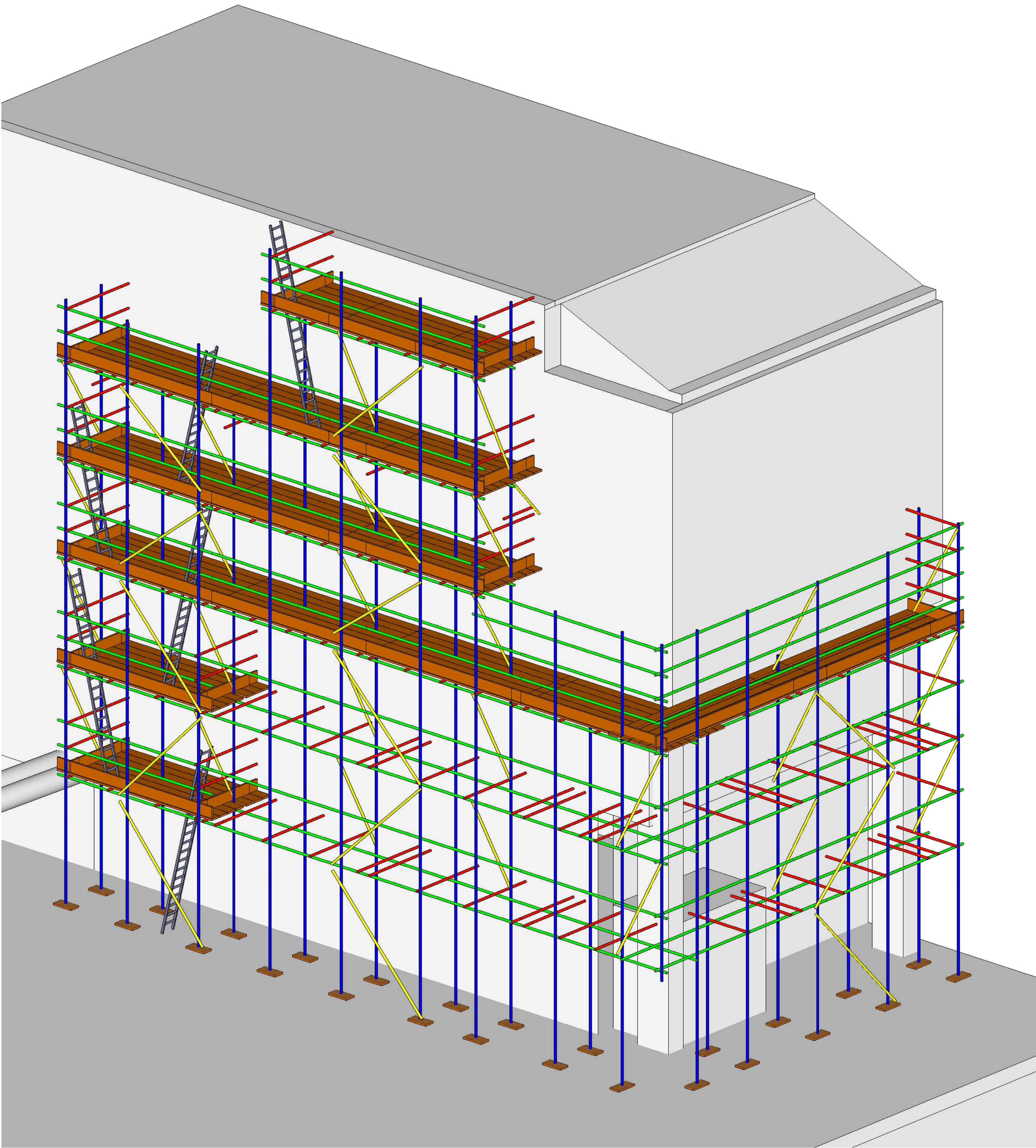
SCALE :
1:50 at A1

DRAWING :
9045-24-07b

Rev	Date	By	Comments
a	16/03	CJB	Tie positions moved - Preliminary drg
b	26/03	CJB	Tie detail & loads updated - Preliminary drg



SECTION A - A



ISOMETRIC VIEW

Rev	Date	By	Comments
a	16/03	CJB	Tie positions moved - Preliminary drg
b	26/03	CJB	Tie detail & loads updated - Preliminary drg

GENERAL NOTES

- A. This drawing is confidential and the exclusive property of the Client. No unauthorised use, copy or disclosure is to be made and it is to be returned upon request.
- B. All services, plant, equipment and materials supplied are subject to our conditions of Contract, Hire or Sale as applicable.
- C. This drawing has been prepared from details supplied to us by the enquirer/ client, who should check that we have correctly interpreted their requirements, and that all loadings, dimensions, details, erection and striking sequences are correct and practicable. No alterations may be made without reference to the Client.
- D. The Client is to prepare and ensure that the foundations are suitable for supporting the loads imposed upon it by our scaffold including its working load.
- E. No sheeting whatsoever, unless already shown, will be added to the scaffold without reference to the Client.
- F. It is the responsibility of the enquirer / Client to ensure that adequate facilities for tying the scaffold are made available and that the building or structure is capable of withstanding the loads applied to it by the scaffold and its working load.
- G. No ties or braces are to be removed or any modifications to be made to the scaffold without reference and approval from the Client.
- H. The enquirer / Client is to design, supply and fix all necessary auxiliary equipment, including, but not limited to, shuttering, timbers, bearers, steel joists and to ensure that such auxiliary equipment is capable of safely transmitting the loads to the standards.
- I. The enquirer/ Client will be responsible for the setting out and final levelling of scaffolding or similar equipment used as a system of support.
- J. All dimensions are as stated or as calculated. Drawing must not be scaled.
- K. This drawing has been prepared on the assumption that all loads will be applied axially to the tubes unless stated otherwise.
- L. Scaffold has been designed in accordance with TG20:21.
- M. The enquirer / Client to ensure that the loads as stated on the drawings are adequate for the works. Scaffold Designers Ltd to be advised if these loads are not acceptable, or if there any specific loading requirements.
- N. Scaffold Designers Ltd will not accept liability for the scaffold design should the scaffold structure be erected with Tender, Preliminary or Approval drawings.
- O. Scaffold Designers Ltd have provided this drawing from information provided and to the best of our knowledge and experience. Scaffold Designers Ltd will not accept any additional costs if the design does not cover all requirements unless raised prior to the issue of working drawings. Any additional items or revisions will be at the liability of the Client or Scaffold Contractor.
- P. Any discrepancies or revisions required to be advised and agreed with Scaffold Designers Ltd before they are commenced. Scaffold Designers Ltd will not accept any charges if they are not agreed first.
- Q. Scaffold Designers Ltd will not accept liability for any damage to the ground or building structure from the scaffold standards, ties, props or other support due to the movement and loads applied by the scaffold.
- R. Scaffold Designers Ltd will not accept liability if the scaffold has not been built as per the drawing and design details.

SPECIAL NOTES

NOTE : Scaffold has been designed for a maximum imposed load of 1.50 kN/sq.m. on one number working lift at any one time and one access lift of 0.75 kN/sq.m. Inside boards have been designed for a maximum imposed load of 0.75 kN/sq.m.

Not for construction until over printed working drawing

PRELIMINARY DRAWING

Any Queries relating to this drawing should be directed to the Christchurch Design Office 01425 283988

GSL

GRIFFIN

Scaffolding London

332/336 Holloway Road

London

N7 6HJ

Tel : 0207 607 1651

DESIGNER:

SCAFFOLD DESIGNERS LTD

Unit 6A, Priory Industrial Estate, Airstead Road

Christchurch, Dorset. BH23 4HD.

Tel : 01425 283988 www.scaffolddesigners.co.uk

TITLE :
INDEPENDENT ACCESS SCAFFOLD

NEW WING, BRITISH MUSEUM LONDON

CLIENT :
T.B.A.

DRAWN BY : CJB	CHECKED BY : ---	DATE : 29th Jan 2025
--------------------------	---------------------	--------------------------------

SCALE : 1:50 at A1	DRAWING : 9045-24-08b
------------------------------	---------------------------------