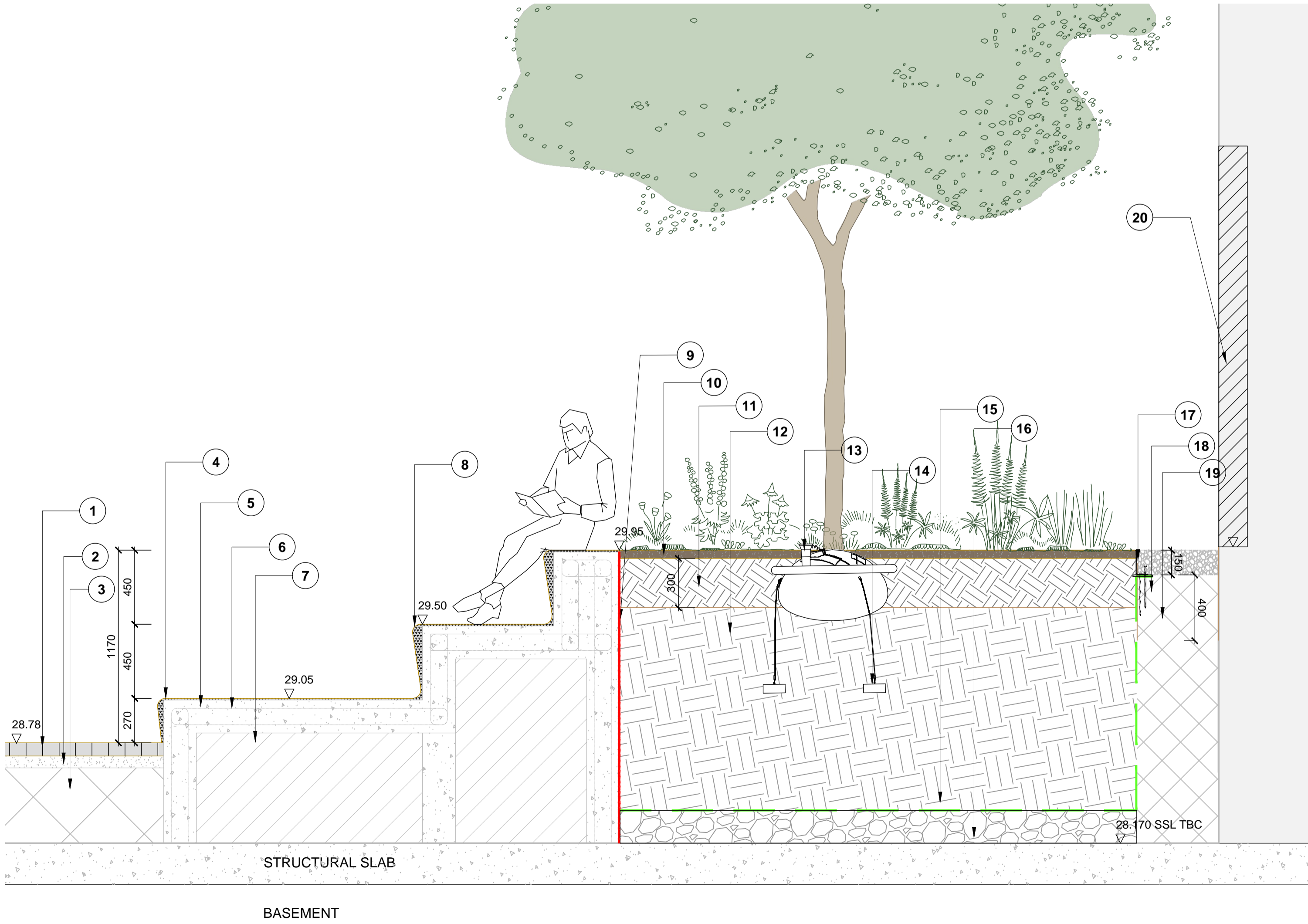
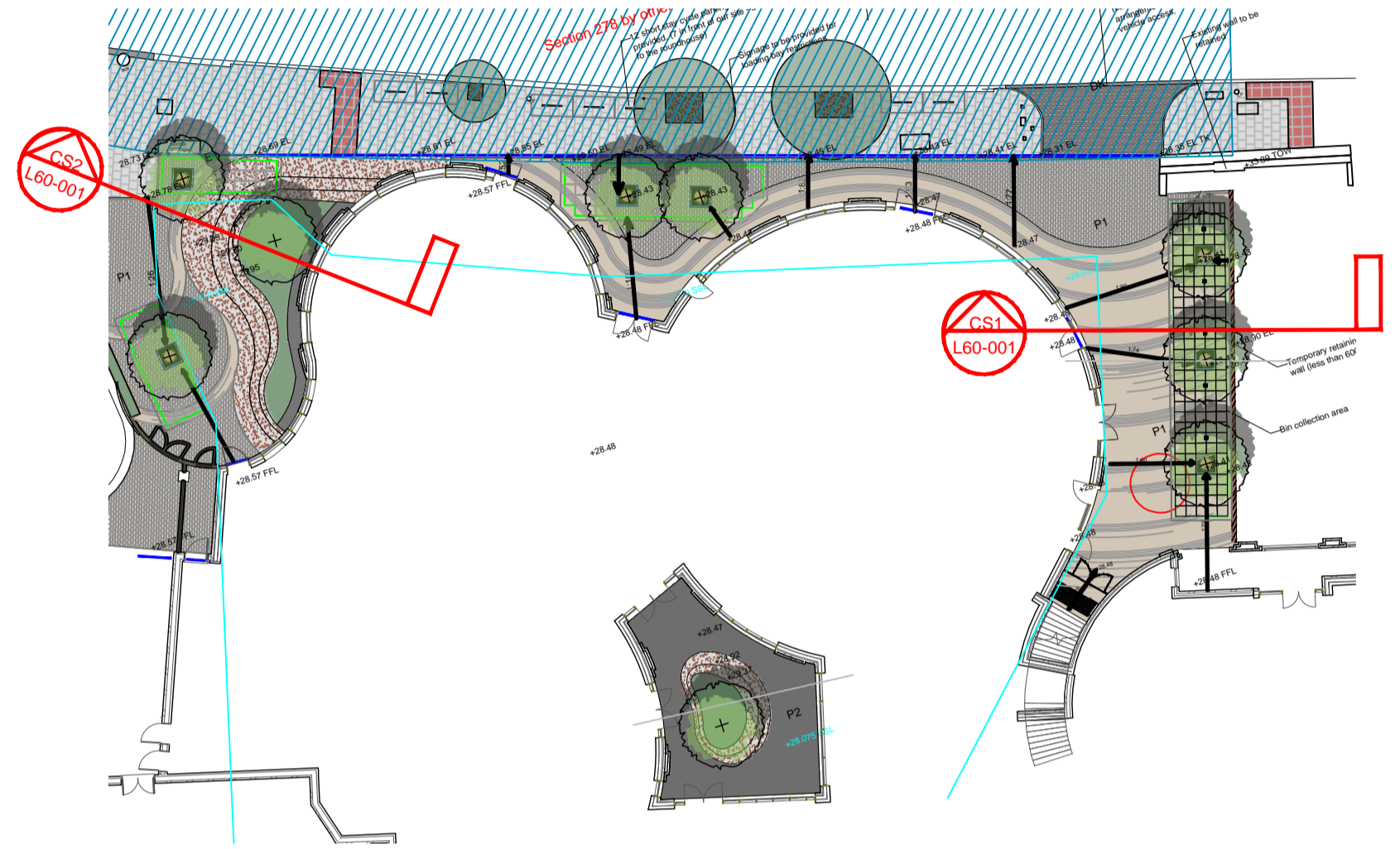


CS1-L60-001:Typical Section through Tree Underground Crates (1:20@A1)

- Rootspace @ 1000mm depth (2 unit deep) c/w twin walled geonet & open reinforcing mesh - gburs64a
 - Rootrain arborvent cast aluminum trafficable aeration inlet with 150mm square top and manifold - rrarbv150b
 - Rootsoil 20 topsoil for use within top 600 of soil profile - rootsoil20
 - Rootsoil sub subsoil for use within soil profiles 600mm or deeper - rootsoilsuba
 - Stormform100 SUD's system c/w 4 side section and corners - SF100A
 - Ullswater vertical steel tree guard 1800mm high x600mm diam, including tree guard tie - ullssp6a
 - Rootstart professional mycorrhiza fungi allow 200g per tree - rspmf2.5la
 - ArborResin precast tree grille 750x750mm with glavanized support frame to fit stormform system
 - Arbormulch bark mulch - GBUMULCHA
 - Arborguy anchorplater strapped anchor system - SASP06A
 - Twin walled structural geonet (included in item 1) see note 1 - gltwgna
 - 20mm open reinforcing mesh (included in item 1) see note 1 - gm20a
 - Hessian biodegradable filter sheet for use within SUDs application. See not A - GBUHESA
 - Root Barrier GBU ReRoot Ribbed. 1000mm high ~ Spec Q31-510
 - 10mm - 20mm clean angular drainage aggregate - gbudrsa
 - P1 - Stone setts to be granite sets in radial layout with different sizes - Layout as per plan - Sizes 100x200x80mm & 200x300x80mm. Colour: Buff/Yellow granite. ~ Spec Q25-140
 - 30mm Bedding course ~ Spec Q25-140
 - MOT Type1 to Civil Engineer's detail & specification
 - Geotextile ~ Spec Q25-365
 - Brick retaining wall - Brick to match architect's brickwork. Foundation to engineer's detail & specification. ~ Spec F10-110
- A. Allow 20% additional for geotextile and reinforced geogrid for overlap and cutting requirements
B. Install rootspace side panels to installation as directed by engineer
C. Positive drainage pipe (110mm perforated pipe)



CS2-L60-002:Typical Section through terraced bench/planter (1:20@A1)

- P1 - Stone setts to be granite sets in radial layout with different sizes. Exact layout TBC - Sizes 100x200x80mm & 200x300x80mm. Colour: Buff granite ~ Spec Q25-140
- 30mm min Bedding course ~ Spec Q25-140
- MOT Type 1 depth to Civil engineer's detail & specification.
- 10mm terrazzo finish. Light Grey cement incorporating recycled brick from existing wall demolished on site. ~ Spec M41-100
- 200mm concrete planter structure ~ Spec E05-100
- Steel reinforcement to engineer's details and specification.
- Void Former (if required - manufacturer to advise)
- Corners to be curved
- Waterproofing ~ Spec J30-110
- 50mm ornamental bark mulch ~ Spec Q28-155
- 300mm imported lightweight topsoil to BS 3882:2015 from Bourne Amenity Ltd (or similar approved) ~ Spec Q28-125
- 700mm min imported lightweight subsoil to BS 8601:2013 from Bourne Amenity Ltd to make up levels. ~ Spec Q28-125
- RootRain urban irrigation system ~ Spec Q31-512
- Underground guying system to be GreenBlue Urban's ArborGuy Deadman Anchor. ~ Spec Q31-526
- Geotextile ~ Spec Q25-365
- 100mm pea gravel drainage layer. ~ Spec Q28-345
- 150mm Kinley 'AluExcel' aluminium edging ~ Spec Q11-201
- 150mm loose gravel fire break ~ Spec Q23-160
- MOT Type1 ~ Spec Q20-210
- Waterproofing

P5	28.11.24	Issued for BSR Gateway 2 Submission
P4	27.11.24	Issued for BSR Gateway 2 Submission
P3	12.11.24	Issued for comment
P2	24.10.24	Updated sections
P1	30.08.24	Issued for comment
Rev	Date	Details



Client:
Regal London

Project:
100 Chalk Farm Road

Drawing Title:
Typical Sections - Ground Floor Sheet 1

Phase: S4 - For Stage Approval	Rev: P5	Date: 29.08.24
Drawing Number: CHALF-AFA-DR-L-YY-L60-001	Drawn by: HC/AL	Scale: 1:20 @ A1
DO NOT SCALE FROM DRAWING.		