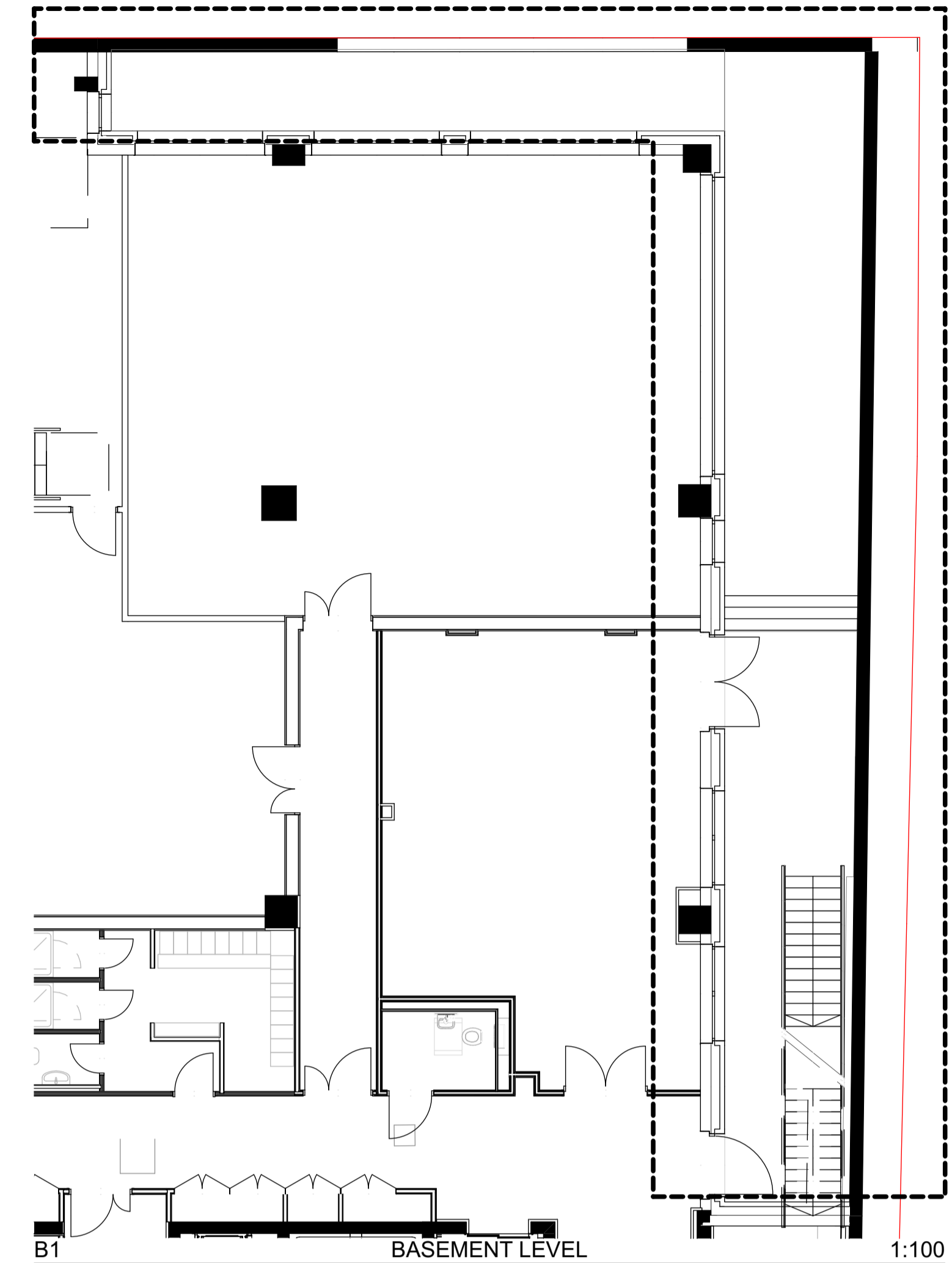


Refer to L-30001

B1: BASEMENT LEVEL



Refer to L-30001



B1 BASEMENT LEVEL 1:100

Notes  
Check all dimensions on site. Do not scale from this drawing. Report any discrepancies and omissions to HLM Architects. This Drawing is Copyright ©

- LIGHTING PLAN KEY**  
Refer to Arup MEP drawings and lighting schedule for full details and specification
- Type L03  
Recessed strip light to benches  
Flexible LED fitting with architectural detail
  - Type EW2  
Mini ground-recessed LED projector - uplighter
  - Type EB3  
Bollard lighting
  - Type EB2  
Wall / Planter mounted, LED down light.  
Refer to Detail D34 for planter mounted detail
  - Type EC1  
Light Column
  - Type EW4  
Recessed strip light to building perimeter

NOTE: TO BE READ WITH BPD-HLM-NB-XX-SP-L-00601 LANDSCAPE SPECIFICATION FOR DETAILS.

Hard Landscape GA Key NEW BUILD

- SP3** Stone Paving Type 3 - Tactile  
Marshalls Vietnamese Granite Flag Paving (50mm)  
Tactile Paving, Malasana colour, 400 x 400mm.  
SPEC REF: Q25/320
- SP5** Stone Paving Type 5 - Existing  
Slab Paving (Existing)  
Made good where necessary.
- SP6** Stone Paving Type 6  
Indian Sandstone Paving (50mm). Sandblast finish.  
Laid on rigid bed system. Unit size, 300 x random length 300-600mm
- SP6A** - Vehicle loading  
**SP6B** - Vehicle loading over podium  
**SP6C** - Pedestrian loading over podium with permevoid  
**SP6D** - Pedestrian loading over podium  
SPEC REF: Q25/140E
- SP7** Stone Paving Type 7  
Indian Sandstone Paving (50mm). Sandblast finish.  
Laid on rigid bed system. Unit size, 200 x 200mm
- SP7A** - Vehicle loading  
**SP7B** - Vehicle loading over podium  
**SP7C** - Pedestrian loading over podium with permevoid  
SPEC REF: Q25/140F
- SP8** Stone Paving Type 8  
Indian Sandstone Paving (50mm). Sandblast finish. Laid on Rigid bed System. Pedestrian loading over podium with permevoid. Unit size, 200 x random length 200-400mm  
SPEC REF: Q25/140G
- GrV** Decorative Gravel  
CED Flat White Pebbles 20-40mm  
To be dressed over drainage channel.  
SPEC REF: Q23/160B
- D1** Decking  
Enviro Build Frontier Composite Decking (22mm)  
Iroko, 143 x 22 x 4000mm  
SPEC REF: Q55/380A
- E1a** Edging Type 1a  
Logic Edinburgh Straight Module Planter System, (E1a) Corten Steel Finish  
SPEC REF: Q10/150C
- E2** Edging Type 2  
Logic Edinburgh Edge Straight System, Galvanised Steel Powder Coated Finish, 3(W) x 70(H) x 2000(L)mm  
SPEC REF: Q10/150F
- E2b** Edging Type 2b  
Logic Edinburgh Edge Straight System, Galvanised steel polyester powder coated black finish, 3(W) x 200(H) x 2000(L)mm x 100(Base width)mm. 100mm upstand  
SPEC REF: Q10/150E
- E4** Edging Type 4  
Indian Sandstone Bespoke kerb. Sandblast finish. Unit size: 200(W) x 525(H) x 915(L)mm - 125-325mm upstand  
SPEC REF: Q10/200
- G3** Gate Type 3  
MRI Suite - Side Entrance Gate - Double Leaf  
Steel, Style to match existing Gate Type 1, 1800(H)mm  
SPEC REF: Q40/560C
- G4** Gate Type 4  
Maintenance access gate to Quench Pipe area  
1.5m high, 1.2m clear opening. Gate infill to match fence F01  
SPEC REF: Q40/560D

- Bench Type 1 - Surface Fixed**  
Escofet Boxland benches - various  
a 2000 x 500 x 450mm - full seat - white  
b 2000 x 500 x 450mm - full seat - grey  
c 2000 x 500 x 450mm - backless seat - white  
d 2000 x 500 x 450mm - backless seat - grey  
e 500 x 500 x 450mm - white  
f 2000 x 500 x 450mm - grey  
g 1000 x 500 x 450mm - grey  
h nexus hexagon - grey  
SPEC REF: Q50/220
- Bollard**  
StreetLife Rough and Ready (1-Removable) (2-Fixed)  
Bollard. Hardwood Timber with steel frame, 750(H)mm.  
SPEC REF: Q50/196 & Q50/196A
- Fencing F01**  
Railing / Trellis to quench pipes  
Black powder coated 1500mm high  
SPEC REF Q40 / 220E
- Cycle Stand**  
Marshalls Orlerton Cycle Stand - Black Polyester Powder Coated Steel 750(H) x 48(W) x 750(L)mm  
SPEC REF: Q50/210
- Litter Bin**  
Helsinki Litter Bin, Black powder coated finish, 755 mm(L) x 570 mm (W) x 1230 mm(H)  
SPEC REF: Q50/240
- Signage S1**  
Refer to drawing BPD-HLM-NB-XX-DR-L-30402 for details
- Signage S2 - Totem**  
1600(h)x600(w)x300(d)mm
- Open Vent/Grille**  
To Architect's Details
- Surface Drainage Channel**  
Refer to Aecom Civils Drainage plans
- Expansion/ Movement Joint**  
Refer to Aecom Civils Drawing for Details
- Recessed Access Covers.**  
**MH** - Manholes Q10/215  
(Refer to Aecom Civils Drainage plans and schedules)  
**IC** - Inspection Chambers  
(Refer to Aecom Civils Drainage Plans)  
**YG** - Yard Gullies  
(Refer to Aecom Civils Drainage Plans)
- RWO** - Rain Water Outlet  
Manhole covers 300x300 Spec Ref Q10/215A  
(Refer to AECOM Civils New Build Drainage plans)  
**DP** - Down pipes  
(Refer to AECOM Civils New Build Drainage plans)
- Attenuation Tank**  
Refer to AECOM Civils Drainage plans
- Lighting Column**  
Santa & Cole Rama LED Column, 900(L) x 200(W)mm, Height TBC. Refer to Electrical Engineer's drawings for exact numbers and location

Rev	Description	Date	By	CHK
C03	SANDSTONE SPEC AMENDED & TOTEM SIGN ADDED	31.03.25	HV	AO
C02	AMENDMENTS AS PER LPS COMMENT	06.09.23	HV	AO
C01	REVISED SITE LAYOUT AS CLOUDED	02.08.23	HV	AO
T04	AMENDED AS NOTED	11.04.22	HV	AO
T03	AMENDED AS NOTED	18.03.22	HV	AO
T02	AMENDMENTS AS BUBBLED	23.09.21	AO	AO
T01	NB STAGE 4 TENDER ISSUE	12.02.21	HV	AO

Revisions				
Project				
<b>BEDFORD PASSAGE DEVELOPMENT</b>				
Client				
<b>MIDDLESEX ANNEXE LLP</b>				
Title				
<b>HARD LANDSCAPE GA PLAN - GROUND FLOOR - SHEET 02</b>				

Drawing No.	Revision
<b>BPD-HLM-NB-00-DR-L-30002</b>	<b>C03</b>
Scale @ A1	Drawn
1:100	HV
Date	Checked
12.02.2021	HLM

HLM Architects  
© HLM Architects  
2nd Floor  
The Ruskin Building  
Tudor Square  
Sheffield S1 2LA  
www.hlmarchitects.com  
T. +44 (0) 114 263 9600  
F. +44 (0) 114 263 9650  
sheffield@hlmarchitects.com