

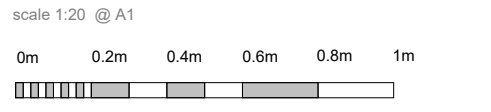
Bell Design Consultants Limited will not accept responsibility for errors made by others in scaling from this drawing. All construction information should be taken from the indicated dimensions only.

All site dimensions are in millimetres unless noted otherwise. Dimensions to be verified by the contractor and discrepancies must be reported to Bell Design Consultants Limited.

All work carried out and all materials used must be in accordance with the relevant Building Control Approved Document Part A through to Part S and including Regulation 7 as well as all relevant BS, BS EN and BS ISO Standards.

Copyright © Bell Design Consultants Limited.

sheet classification	
Category	Type
G - General	0 - General
E - Existing	1 - Elevations
T - Temporary	2 - Plans
D - Demolished	3 - Building sections
P - Proposed	4 - Enlarged plans, interior elevations & sections
S - Services	5 - Details
F - Fire	6 - 3D views



All Fire and Life Safety equipment to be fully tested and confirmed as to meeting current UK standards. Any elements not achieving this to be replaced/upgraded to achieve compliance.

First issue.	05.03.25
rev	notes
notes	date



project

OFFSPRING
Camden

project stage

ADV CON APP

drawing title

Existing Shopfront Elevations

drawing number

BDC217-001-E1001

revision

BDC

scale

1 : 20

first issue date

26.03.2025

site address

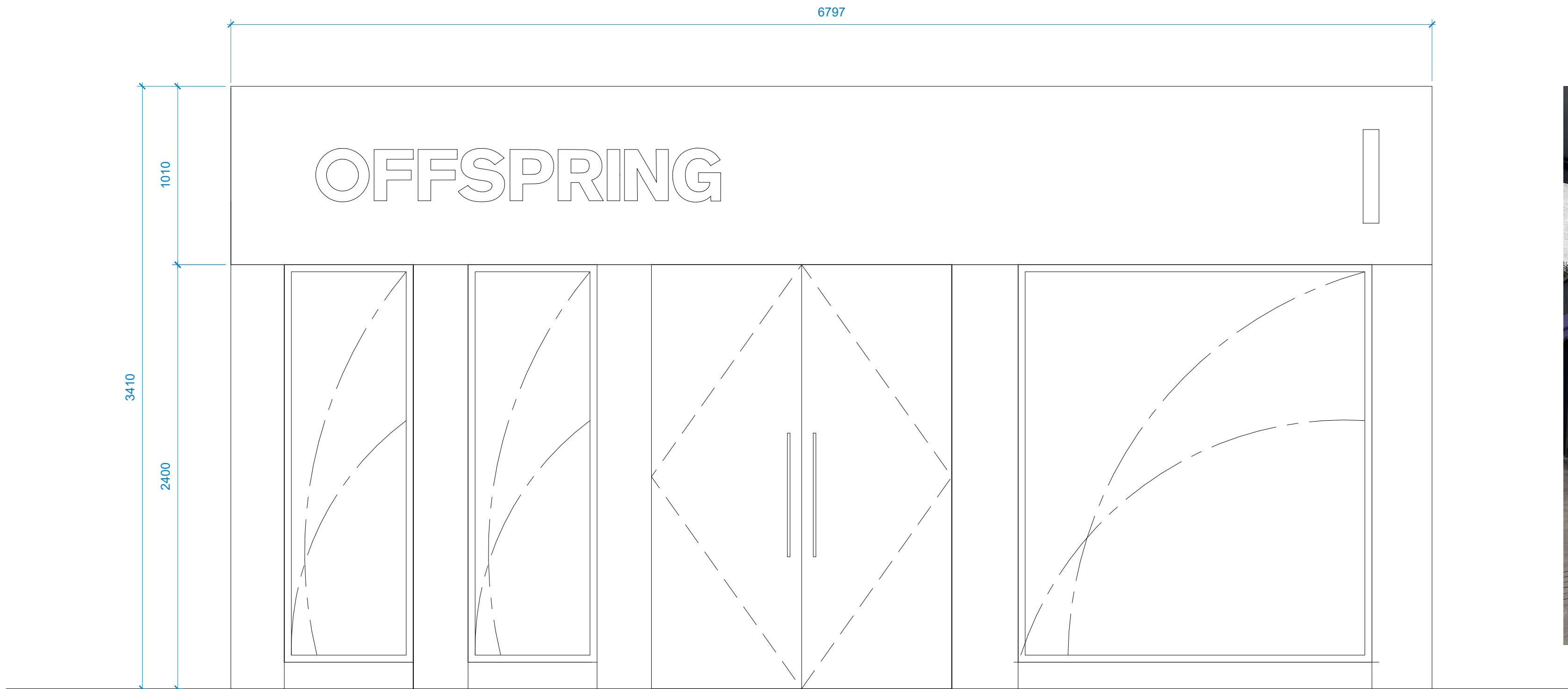
221 Camden High Street, London NW1 7BU



commercial interior designers

t: +44 (0) 1666 502 422

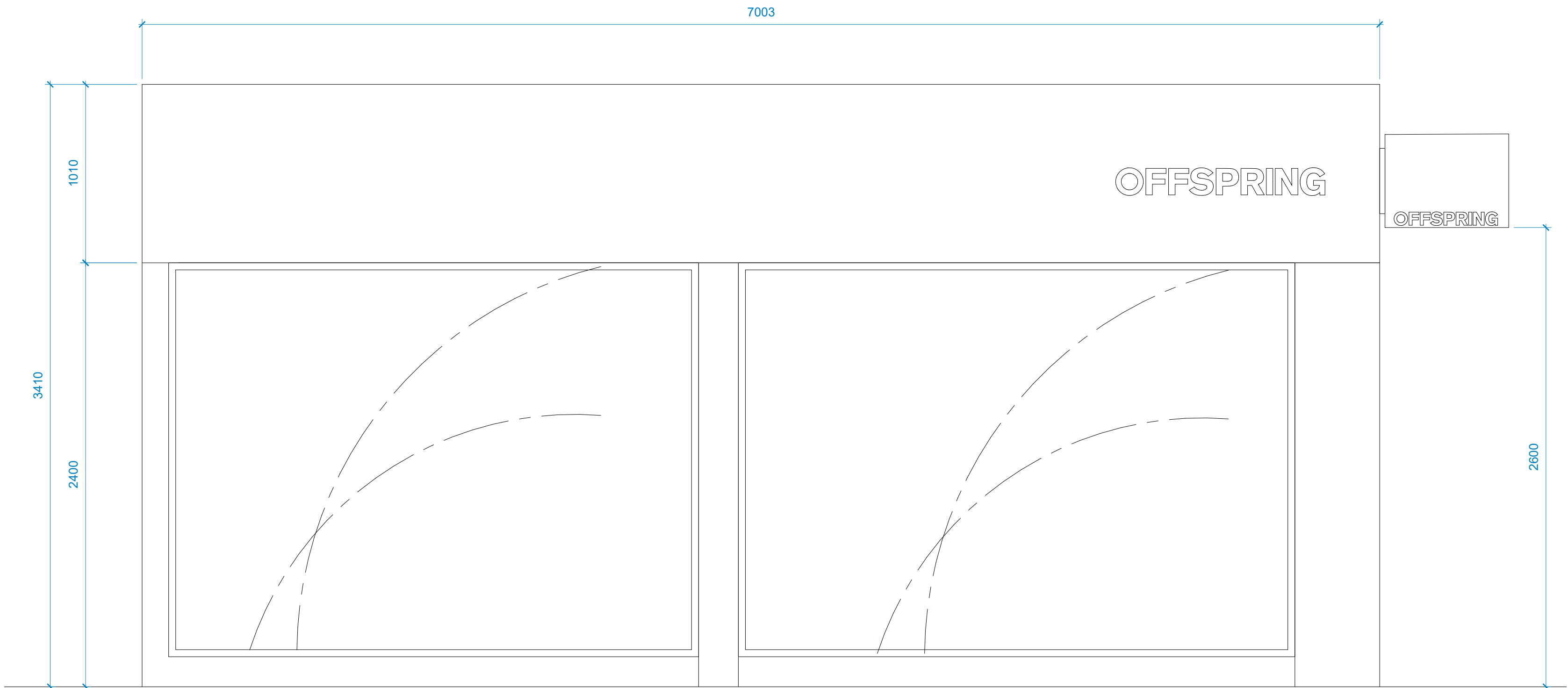
www.belldesignconsultants.com



SHOPFRONT ELEVATION - CAMDEN HIGH STREET
Scale 1:20



EXISTING SHOPFRONT



SHOPFRONT ELEVATION - INVERNESS STREET
Scale 1:20