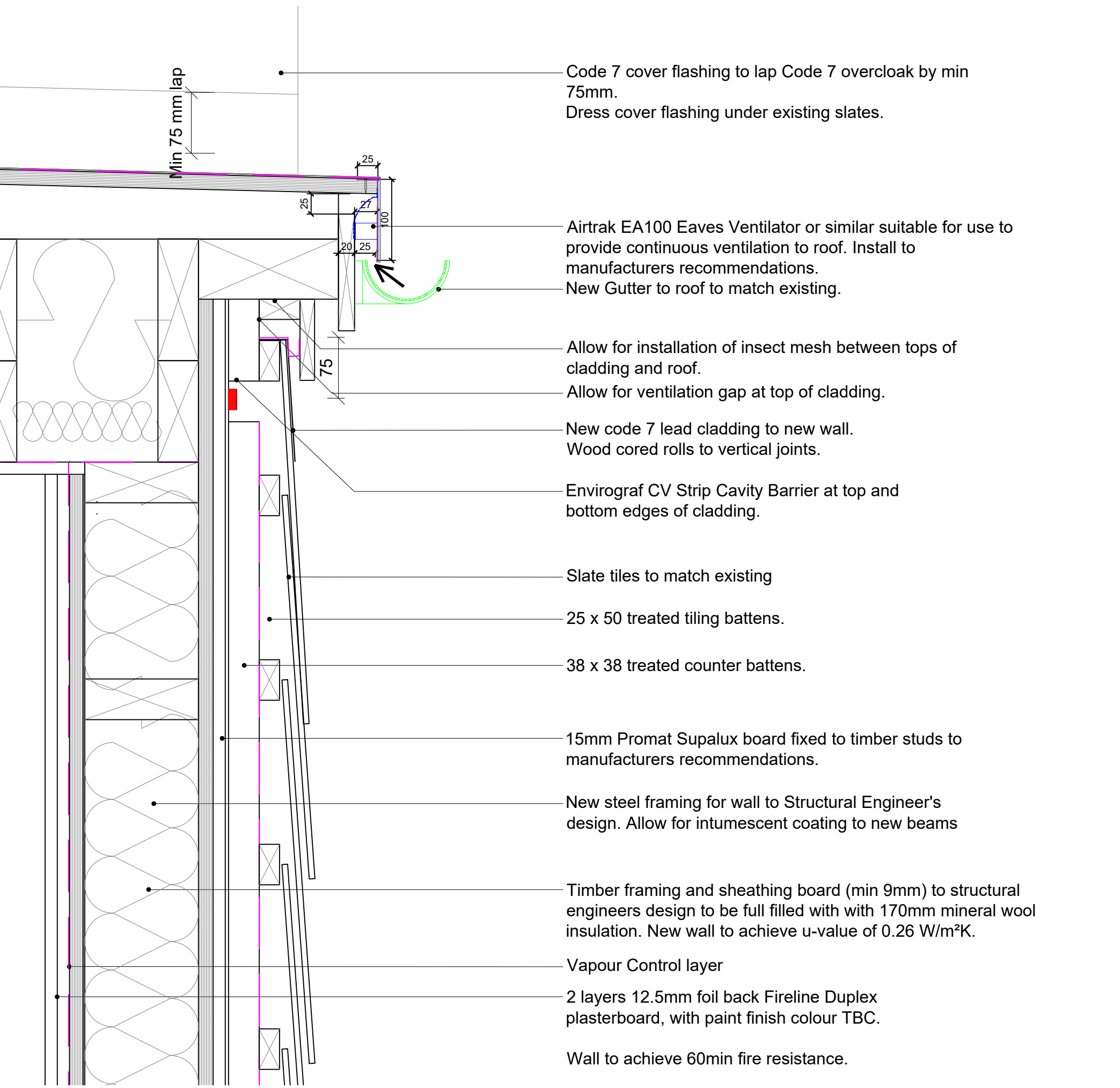


PROPOSED FLAT ROOF ABUTMENT DETAIL 1:5 @ A1



PROPOSED EAVES AND WALL DETAIL 1:5 @ A1

**NOTE**  
Existing construction details are assumed, further on site investigation required to determine actual existing construction.

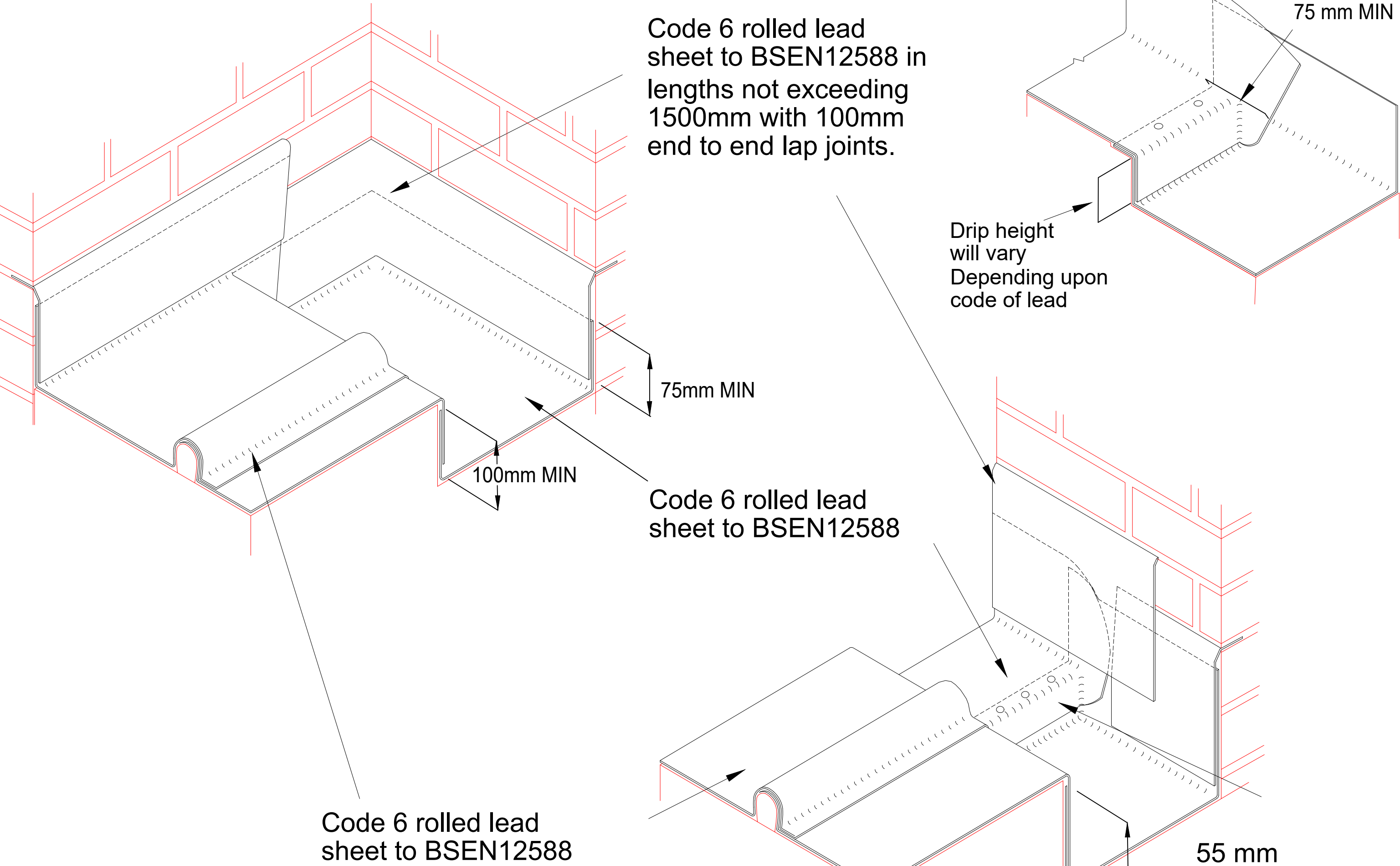
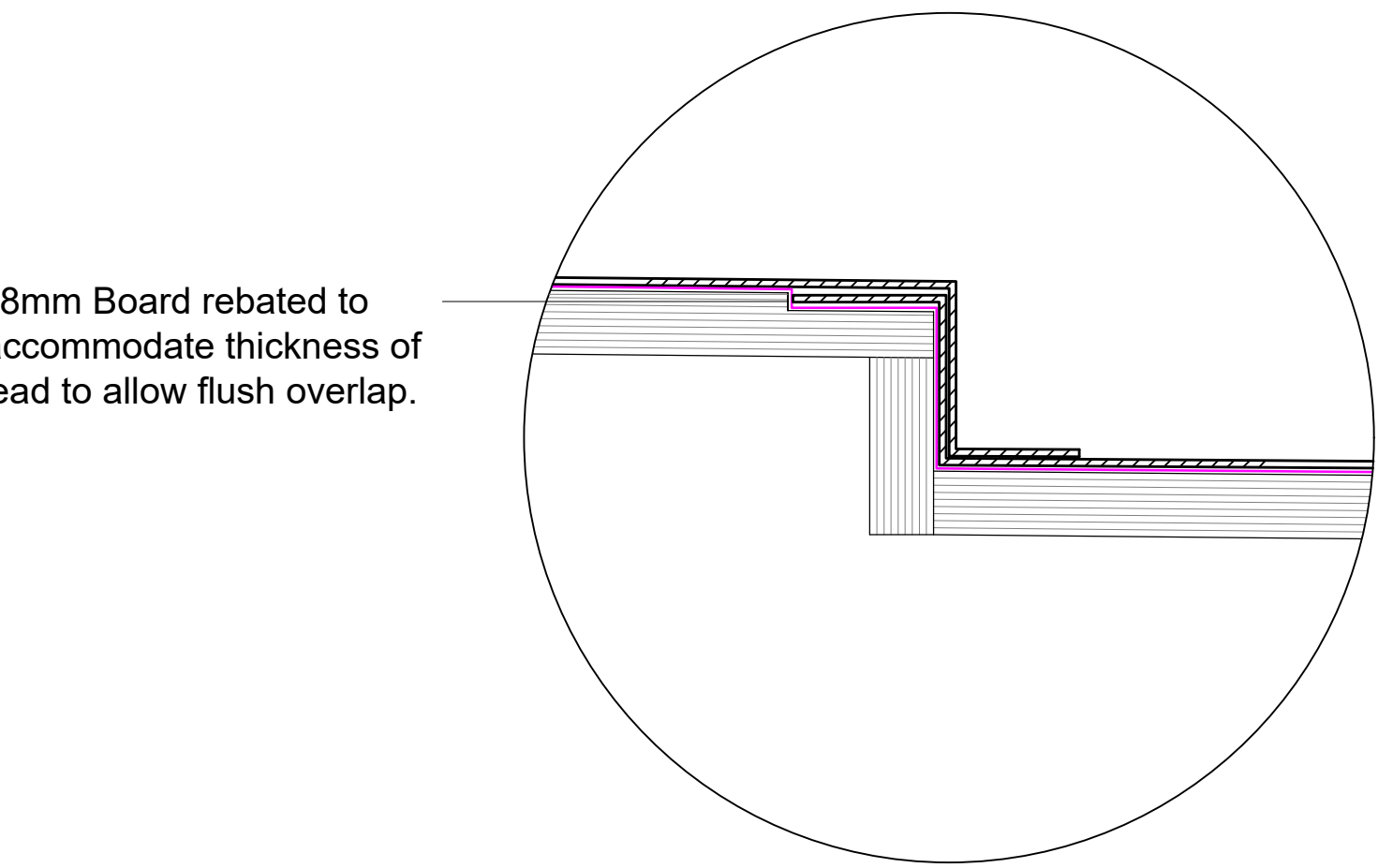


Table 3 Flat Roofs		
BSEN12588 Code No.	Max.spacing of joints with the fall mm	Max.spacing between drips mm
4	500	1500
5	600	2000
6	675	2250
7	675	2500
8	750	3000

Table 7		Table 8	
Max.Length between drips mm	Max.overall girth	Gutters without rolls minimum drip height(mm)	Gutters divided with rolls
1500	750	50	55
2000	800	50	55
2250	850	50	55
2500	900	60	60
3000	1000	60	60

STANDARD STEP/ DRIP DETAILS 1:5 @ A1



PROPOSED STEP/ DRIP DETAIL 1:2 @ A1

- GENERAL NOTES
1. Do not scale from this print or use as a template.
  2. All dimensions must be verified on site before any work is put in hand and any discrepancies must be reported to the Architect. Where any variations occur between small scale and detailed drawings, detail drawings should be worked from.
  3. Copyright of this drawing is reserved by Osbornes and is issued on condition that it is not copied or disclosed to any third party either wholly or in part without the consent of Osbornes in writing.
  4. This drawing is to be read in conjunction with all relevant specifications and drawings issued by the Architect, Engineer and other specialists.

75 mm MIN

Drip height will vary Depending upon code of lead

Code 6 rolled lead sheet to BSEN12588

55 mm drip height

200mm MAX Codes 5 and 6  
300mm MAX Codes 7 and 8

REVC : 01/04/2025 Cladding finish changed  
REVB : 26/02/2025 Roof detail updated  
REVA : 22/01/2025 updated following SE information.



PO Box 395 • Malvern • Worcestershire • WR14 9LL  
T: 01684 311303 E: architecture@osbornesarchitects.com W: osbornesarchitects.com

DRAFT ☐ ISSUE ☒ TENDER ☐ CONTRACT ☐ RECORD ☐

CLIENT ATG ENTERTAINMENT  
PROJECT AMBASSADORS ROOF  
TITLE PROPOSED FLAT ROOF DETAILS  
SCALE 1:5 @ A1  
DATE JAN 2025  
DRAWN TL

DRAWING NUMBER 24-127-D101C