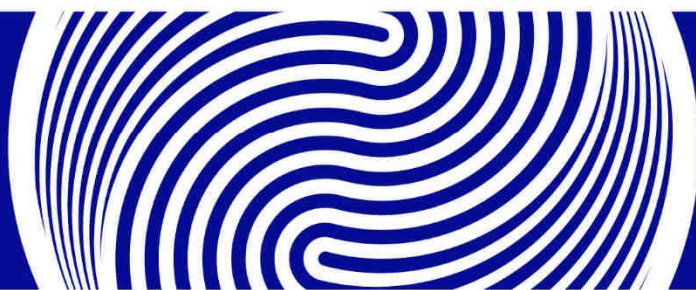


## 29 Bedford Row London



**Planning Compliance Report  
Report 29763.PCR.01**

**Bedford Row Chambers Ltd.  
29 Bedford Row  
London WC1R 4HE**

Report 29763.PCR.01			
Revision History			
First Issue Date: 21/02/2025			
A	05/03/2024 – Minor amendments made prior to client review.	D	
B		E	
C		F	
Written by:		Checked by:	
Aidan Tolkien MIOA Associate Director		Jamie Murray MIOA Principal Acoustic Consultant	
<b>Disclaimer</b> KP Acoustics Ltd. has used reasonable skill and care to complete this technical document, within the terms of its brief and contract with the resources devoted to it by agreement with the client. We disclaim any responsibility to the client and others in respect of any matters outside the stated scope. This report is confidential to the client and we accept no responsibility to third parties to whom this report, or any part thereof, is made known. KP Acoustics Ltd. accepts no responsibility for data provided by other bodies and no legal liability arising from the use by other persons of data or opinions contained in this report. KP Acoustics Ltd. 2025			

## Contents

1.0	INTRODUCTION .....	1
2.0	SITE SURVEYS .....	1
2.1	Site Description .....	1
2.2	Environmental Noise Survey Procedure .....	2
2.3	Equipment.....	4
3.0	RESULTS.....	4
4.0	NOISE ASSESSMENT GUIDANCE.....	5
4.1	BS4142: 2014 ' <i>Methods for rating and assessing industrial and commercial sound</i> ' .....	5
4.2	Local Authority Guidance.....	6
4.3	Commercial Properties .....	7
5.0	NOISE IMPACT ASSESSMENT .....	8
5.1	Existing Plant Installations .....	8
5.2	Calculations.....	10
6.0	ANTI-VIBRATION MOUNTING STRATEGY.....	10
7.0	CONCLUSION.....	10

### List of Attachments

29763.TH1	Environmental Noise Time History
29763.Daytime L90.TH1	Statistical analysis for representative daytime $L_{A90}$
29763.Night-time L90.TH1	Statistical analysis for representative night-time $L_{A90}$
Appendix A	Glossary of Acoustics Terminology
Appendix B	Acoustic Calculations
Appendix C	Anti-Vibration Mounting Specification Reference Document

## 1.0 INTRODUCTION

KP Acoustics Ltd has been commissioned by Bedford Row Chambers Ltd, 29 Bedford Row, London, WC1R 4HE to undertake a noise impact assessment of an existing plant unit installation serving the building at 29 Bedford Row, London, WC1R 4HE.

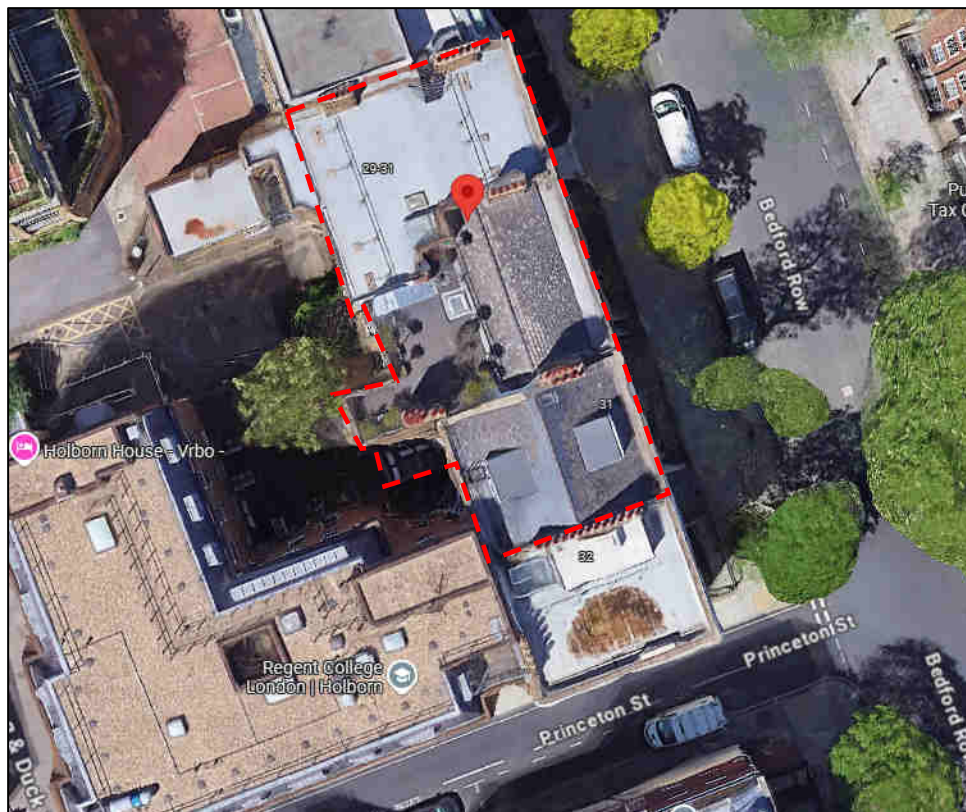
A 24-hour environmental noise survey has been undertaken on site in order to prepare a noise impact assessment in accordance with BS4142:2014 '*Method for rating and assessing industrial and commercial sound*' as part of the planning requirements of the London Borough of Camden.

This report presents the methodology and results from the environmental survey, followed by calculations in accordance with BS4142 to provide an indication as to the likelihood of the noise emissions from the existing plant unit installation having an adverse impact on the closest noise sensitive receiver. Mitigation measures will be outlined as appropriate.

## 2.0 SITE SURVEYS

### 2.1 Site Description

As shown in Figure 2.1, the site is bounded by commercial properties, with Bedford Row to the east.



**Figure 2.1 Site Location Plan (Image Source: Google Maps)**

Initial inspection of the site revealed that the background noise profile at the monitoring location was typical of an urban cityscape environment, with the dominant source being road traffic noise from the surrounding roads.

## 2.2 Environmental Noise Survey Procedure

Continuous automated monitoring was undertaken for the duration of the noise survey between 13:00 on 07/02/2025 and 14:15 on 10/02/2025.

In addition to the continuous automated monitoring, three, 15 minute manual noise measurements were made at various locations throughout the property, as detailed within Table 2.1. The measurements were undertaken to verify the noise levels emitted by various existing plant units.

A representative from the various air conditioning maintenance companies was present on site to manually override each of the plant installation locations, to provide an operational scenario of when the plant units are operating at capacity.

The environmental noise measurement position, existing plant installation locations, and the closest noise sensitive receiver relative to the plant installations are described within Table 2.1 and shown within Figure 2.2.

Icon	Descriptor	Location Description
①	Noise Measurement Position 1	The microphone was installed on a tripod on the roof of 31 Bedford Row, as shown in Figure 2.2. The microphone was positioned within free-field conditions at least 1.5 metres from the nearest surface.
②	Manual Noise Measurement Position 1	Plant Location 1 as shown in Figure 2.2 The microphone was positioned within free-field conditions at least 1.5 metres from the nearest surface. The measurement was taken at a distance of 1.2m from each plant installation.
③	Manual Noise Measurement Position 2	Plant Location 2 as shown in Figure 2.2 The microphone was positioned within free-field conditions at least 1.5 metres from the nearest surface. The measurement was taken at a distance of 1.2m from each plant installation.
④	Manual Noise Measurement Position 3	Plant Location 3 as shown in Figure 2.2 The microphone was positioned within free-field conditions at least 1.5 metres from the nearest surface. The measurement was taken at a distance of 1.2m from each plant installation.





Icon	Descriptor	Location Description
	Nearest noise sensitive receptors	Various windows belonging to Regent College, London
	Existing plant installation location	Existing plant installations are outlined in Section 5.1.

Table 2.1 Measurement positions and descriptions

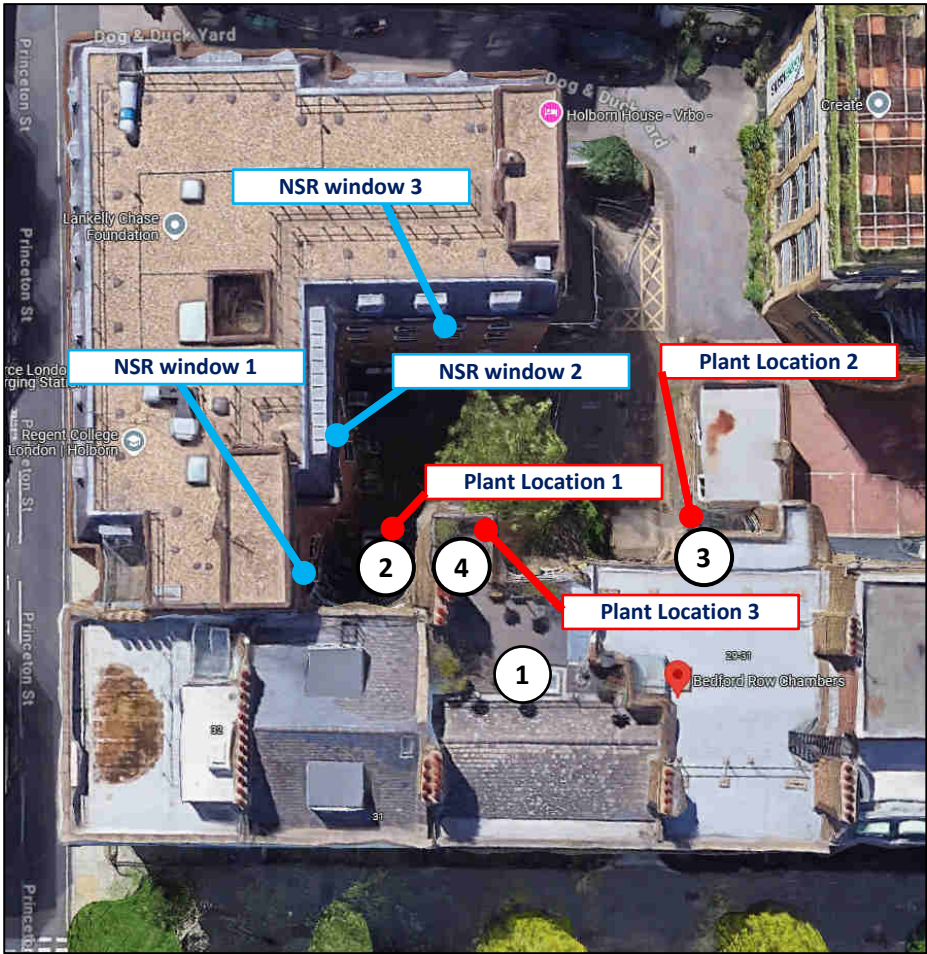


Figure 2.1 Site measurement positions (Image Source: Google Maps)

The choice of the position was based both on accessibility and on collecting representative noise data in relation to the nearest noise sensitive receivers and the existing plant installation locations.

Weather conditions were generally dry with light winds and therefore suitable for the measurement of environmental noise. The measurement procedure complied with ISO 1996-2:2017 Acoustics ‘Description, measurement and assessment of environmental noise – Part 2: Determination of environmental noise levels’.

### 2.3 Equipment

The equipment calibration was verified before and after use and no abnormalities were observed. The equipment used is described within Table 2.2.

Measurement instrumentation		Serial no.	Date	Cert no.
Noise Kit 21	NTI Audio XL2 Class 1 Sound Level Meter	A2A-21099-E0	11/07/2024	TCRT24/1525
	Free-field microphone NTI Acoustics MC230A	A23571		
	Preamp NTI Acoustics MA220	10996		
	NTI Audio External Weatherproof Shroud	-	-	-
B&K Type 4231 Class 1 Calibrator		2147411	14/06/2024	UKAS24/06438

**Table 2.2 Measurement instrumentation**

### 3.0 RESULTS

The  $L_{Aeq}$ : 5min,  $L_{Amax}$ : 5min,  $L_{A10}$ : 5min and  $L_{A90}$ : 5min acoustic parameters were measured throughout the duration of the survey. Measured levels are shown as a time history in Figure 29763.TH1.

Representative background noise levels are shown in Table 3.1 for daytime and night-time.

It should be noted that the representative background noise level has been derived based on the guidance of BS4142 Section 8.1.4 from the  $L_{A90,5min}$  levels measured during the environmental noise survey undertaken on site, as shown in 29763.Daytime L90.TH1 and 29763.Night-time L90.TH1 attached.

Time Period	Representative background noise level $L_{A90}$ dB(A)
Daytime (07:00-23:00)	34dB
Night-time (23:00-07:00)	31dB

**Table 3.1 Representative background noise levels**

## 4.0 NOISE ASSESSMENT GUIDANCE

### 4.1 BS4142: 2014 '*Methods for rating and assessing industrial and commercial sound*'

British Standard BS4142:2014 '*Methods for rating and assessing industrial and commercial sound*' describes a method for rating and assessing sound of an industrial and/or commercial nature, which includes:

- Sound from industrial and manufacturing processes
- Sound from fixed installations which comprise mechanical and electrical plant and equipment
- Sound from the loading and unloading of goods and materials at industrial and/or commercial premises, and
- Sound from mobile plant and vehicles that is an intrinsic part of the overall sound emanating from premises or processes.

This Standard compares the Rating Level due to the noise source/s under assessment for a one-hour period during the daytime (07:00 – 23:00 hours) and a fifteen-minute period during the night-time (23:00 – 07:00 hours) with the existing background noise level in terms of an  $L_{A90}$  when the noise source is not operating.

It should be noted that the Rating Level is the Specific Sound Level in question ( $L_{Aeq, Tr}$ ), including any relevant acoustic feature corrections, as follows:

- **Tonality** – '*For sound ranging from not tonal to prominently tonal the Joint Nordic Method gives a correction of between 0dB and +6dB for tonality. Subjectively, this can be converted to a penalty of 2dB for a tone which is just perceptible at the noise receptor, 4dB where it is clearly perceptible, and 6dB where it is highly perceptible*'
- **Impulsivity** – '*A correction of up to +9dB can be applied for sound that is highly impulsive, considering both the rapidity of the change in sound level and the overall change in sound level. Subjectively, this can be converted to a penalty of 3dB for impulsivity which is just perceptible at the noise receptor, 6dB where it is clearly perceptible, and 9dB where it is highly perceptible*'
- **Intermittency** – '*If the intermittency is readily distinctive against the residual acoustic environment, a penalty of 3dB can be applied*'



- **Other sound characteristics** – *‘Where the specific sound features characteristics that are neither tonal nor impulsive, though otherwise are readily distinctive against the residual acoustic environment, a penalty of 3dB can be applied’*

Once the Rating Level has been obtained, the representative background sound level is subtracted from the Rating Level to obtain an initial estimate of the impact, as follows:

- Typically, the greater this difference, the greater the magnitude of the impact
- A difference of around +10 dB or more is likely to be an indication of a significant adverse impact, depending on the context
- A difference of around +5 dB could be an indication of an adverse impact, depending on the context
- The lower the rating level is relative to the measured background sound level, the less likely it is that there will be an adverse impact or significant adverse impact. Where the rating level does not exceed the background sound level, this is an indication of the specific sound having a low impact, depending on the context

*NOTE: Adverse impacts may include but not be limited to annoyance and sleep disturbance. Not all adverse impacts will lead to complaints and not every complaint is proof of an adverse impact.*

The initial estimate of the impact may then be modified by taking consideration of the context in which the sound occurs.

#### **4.2 Local Authority Guidance**

Policy A4 (Noise and vibration) of the 2017 Camden Local Plan states that development should have regard to Camden’s Noise and Vibration Thresholds at Appendix 3 of the Local Plan. The Appendix 3 guidance provided by The London Borough of Camden for noise emissions of new plant in this instance is as follows:

*The noise criteria, as per the Local Plan 2017 of London Borough of Camden, British Standard 4142:2014 ‘Methods for rating and assessing industrial and commercial sound’ should be considered as the main reference document for the assessment. The resultant ‘Rating Level’ would be considered as follows:*

Period	Assessment Location	Rating Level Acceptability Range		
		Green: noise is considered to be at an acceptable level	Amber: noise is observed to have an adverse effect level, but which may be considered acceptable when assessed in the context of other merits of the development	Red: noise is observed to have a significant adverse effect.
Daytime (7:00-23:00)	Garden used for main amenity (free field) and Outside living or dining or Bedroom window (façade)	10dB below background	9 dB below and 5dB above background	5dB above background
Night-time (23:00-7:00)	Outside bedroom window (façade)	10dB below background and no events exceeding 57dB $L_{Amax}$	9db below and 5dB above background or noise events between 57dB and 88dB $L_{Amax}$	5dB above background and/or events exceeding 88dB $L_{Amax}$

**Table 4.1 Camden noise criteria for plant and machinery**

### 4.3 Commercial Properties

We understand that, at the nearest commercial properties, the requirements of British Standard BS8233:2014 *Guidance on sound insulation and noise reduction for buildings* should be satisfied.

Table 6 of that standard states that, for study and work requiring concentration, the internal ambient noise level in executive offices design range should not normally exceed 35-40dBA  $L_{eq,T}$ .

In addition, BS8233 states that attenuation of approximately 15dB can be provided by an open window. Hence, the external noise levels outside the nearest office façade must a noise level no greater than 50-55dBA  $L_{eq,T}$ .

We would therefore propose that the criteria for all plant items should not exceed **50dBA** at 1m from the closest office window. This includes all potential acoustic feature corrections as per BS4142:2014.

## 5.0 NOISE IMPACT ASSESSMENT

### 5.1 Existing Plant Installations

It is understood that the existing plant installations are comprised of the following units:

#### Plant Location 1

- 1 no. Daikin FVXG25K2V1B
- 1 no. Daikin FTXS50K3V1B
- 1 no. Daikin FVXG35L2V1B
- 1 no. Daikin FVXG25K2V1B

#### Plant Location 2

- 2 no. Daikin RXM35R5V1B9
- 1 no. Daikin RXM50R5V1B
- 1 no. Daikin RXM25R5V1B9

#### Plant Location 3

- 1 no. Daikin REYQ10U7Y1B

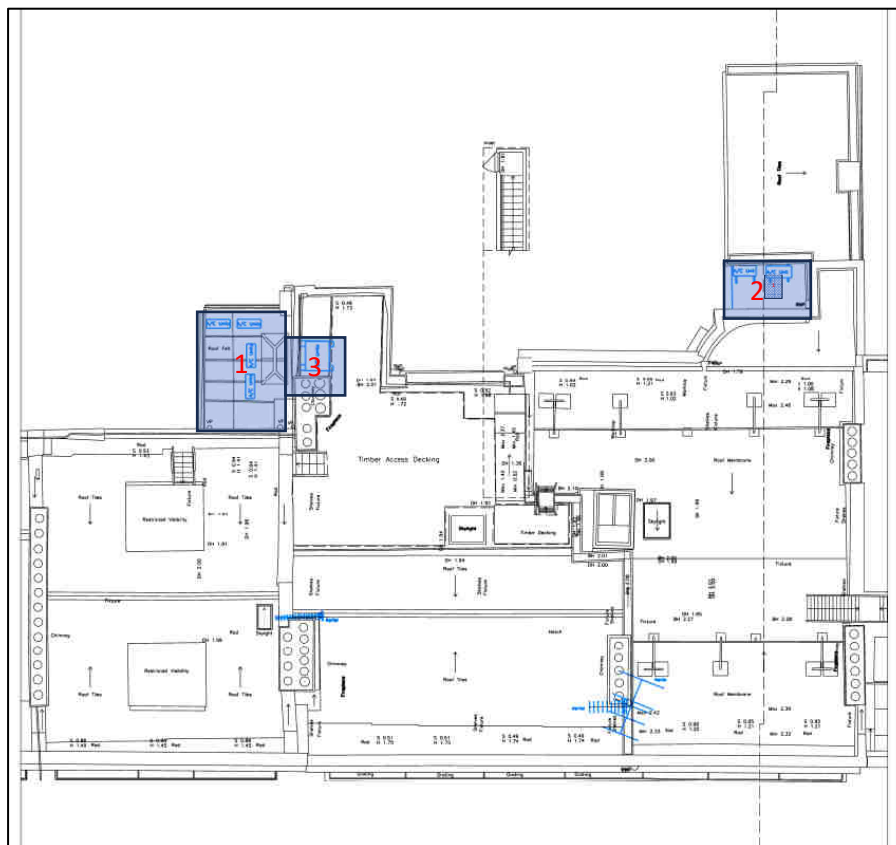
The existing installation locations for the individual plant units are as per Figure 2.1.

The noise emission levels as measured at each location are shown in Table 5.1. The manual noise measurement takes into the actual number of external units as installed on site as well as any local reflections.

Location	Descriptor	Octave Frequency Band (Hz)								Overall (dBA)
		63	125	250	500	1k	2k	4k	8k	
Plant Location 1	SPL@1m (dB)	64	61	56	54	50	47	40	33	60
Plant Location 2	SPL@1m (dB)	55	58	54	52	47	44	36	31	59
Plant Location 3	SPL@1m (dB)	61	60	59	58	57	58	44	38	67

**Table 5.1 Plant Units Noise Emission Levels as provided by the manufacturer**

The existing plant layouts are presented in the figure below:



**Figure 5.1. – Existing Plant Layout (Image Source: Duncan Mitchell – Architect)**

The closest noise sensitive receivers to the existing installation locations have been identified as being various windows belonging to Regent College, located at the approximate distances from the existing plant installation locations, as shown in Table 5.2.

Receivers	Plant Location 1	Plant Location 2	Plant Location 3
NSR Window 1	5m	N/A	8m
NSR Window 2	5m	N/A	8m
NSR Window 3	12m	15m	11m

**Table 5.2 Noise sensitive receivers and plant locations**

It should be noted that there is significant screening from the building envelope between Plant Location 2 and NSR Window 1 & 2, therefore any resultant noise emissions should be insignificant compared to those from nearer plant locations.

## 5.2 Calculations

Taking all acoustic corrections into consideration, the noise level contribution expected at the closest window from the existing plant would be as shown in Table 5.3. Detailed calculations are shown in Appendix B.

Receiver	Criterion	Noise Level at 1m From the Closest Noise Sensitive Window
NSR Window 1	50dB(A)	47dB
NSR Window 2	50dB(A)	47dB
NSR Window 3	50dB(A)	42dB

**Table 5.3 Predicted noise level and criterion at nearest noise sensitive location**

As shown in Appendix B and Table 5.3, transmission of noise to the nearest sensitive windows due to the effects of the existing plant unit installations satisfies the emissions criterion of the London Borough of Camden without the requirement for any further noise control measures.

## 6.0 ANTI-VIBRATION MOUNTING STRATEGY

In the case of all plant units, appropriate anti-vibration mounts should be installed in order to ensure that vibrations do not give rise to structure-borne noise. Appendix C outlines detailed advice in order to ensure that the system installer selects the appropriate anti-vibration mount for the installation.

It is the supplier's responsibility to ensure that all mountings offered are suitable for the loads, operating and environmental conditions which will prevail.

## 7.0 CONCLUSION

An environmental noise survey has been undertaken at 29 Bedford Row, London, WC1R 4HE by KP Acoustics Ltd between 13:00 on 07/02/2025 and 14:15 on 10/02/2025.

Manufacturer's noise data of existing plant units has been used to obtain Specific and Rated Noise Level at the nearest noise sensitive receiver in accordance with British Standard BS4142:2014 for compliance with the London Borough of Camden's requirements.

The rating level was compared with the agreed noise emissions criterion to assess the likelihood of impact considering the environmental noise context of the area as per the requirements of BS4142:2014.

---

It has been concluded that noise emissions from the existing plant units would not have an adverse impact on the nearest receivers.



29 Bedford Row Chambers, Bedford Row, London - Position 1  
Environmental Time History  
07/02/2025 to 10/02/2025

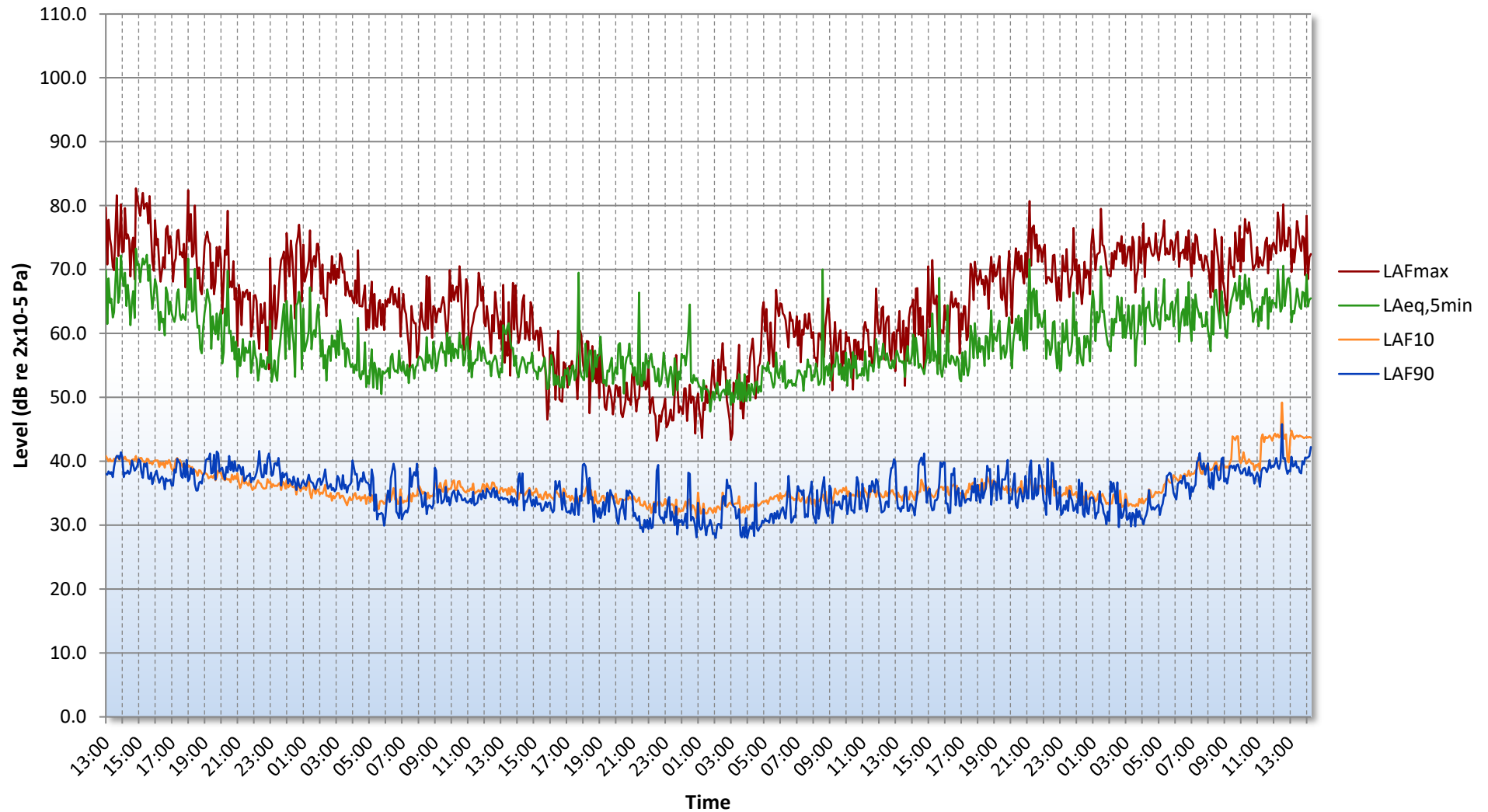


Figure 29763.TH1

29 Bedford Row Chambers, Bedford Row, London - Position 1  
Representative Daytime Background Noise Level  
07/02/2025 to 10/02/2025

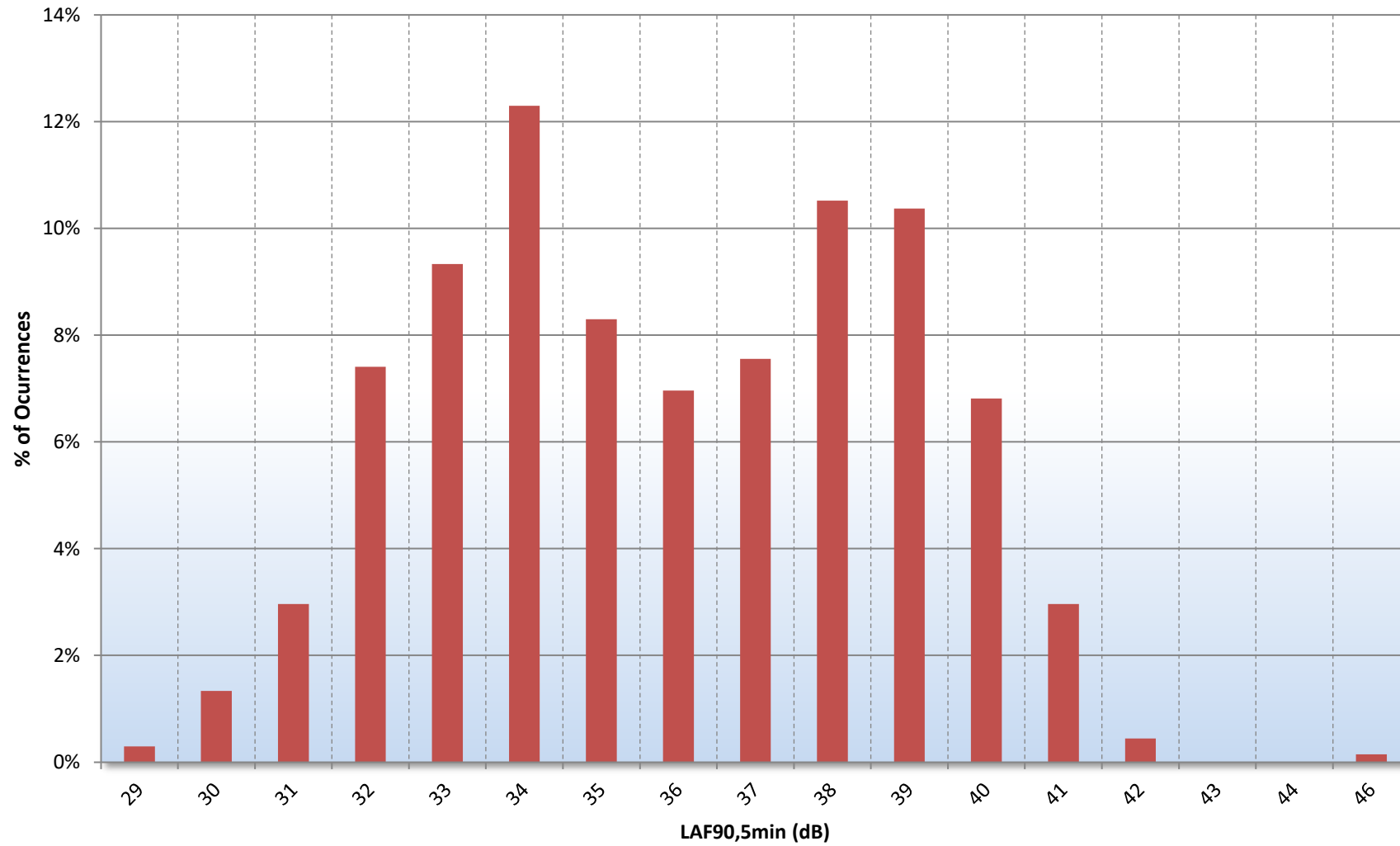


Figure 29763.Daytime L90.TH1

29 Bedford Row Chambers, Bedford Row, London - Position 1  
Representative Night-time Background Noise Level  
07/02/2025 to 10/02/2025

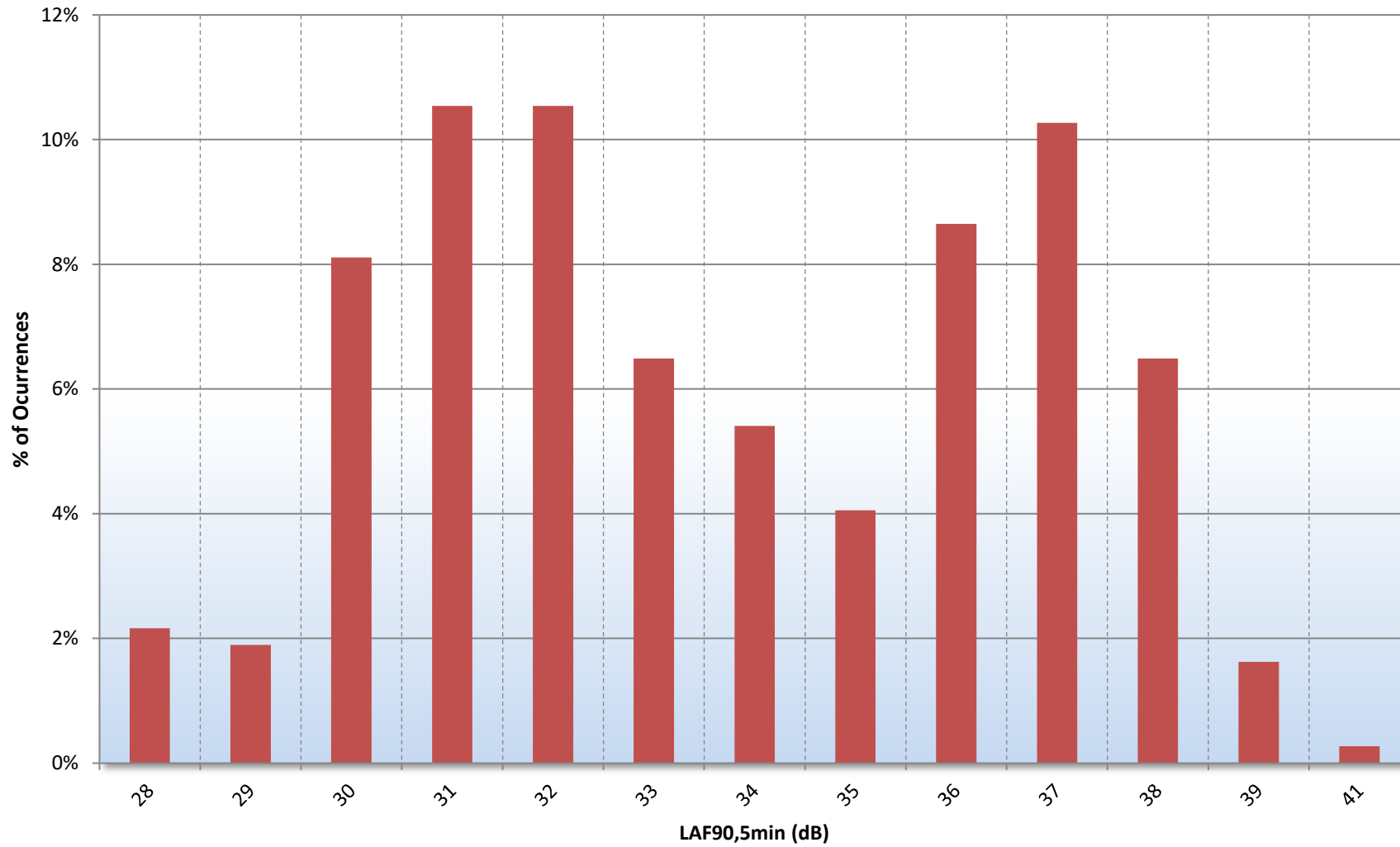


Figure 29763.Night-time L90.TH1

## GENERAL ACOUSTIC TERMINOLOGY

### Decibel scale - dB

In practice, when sound intensity or sound pressure is measured, a logarithmic scale is used in which the unit is the 'decibel', dB. This is derived from the human auditory system, where the dynamic range of human hearing is so large, in the order of  $10^{13}$  units, that only a logarithmic scale is the sensible solution for displaying such a range.

### Decibel scale, 'A' weighted - dB(A)

The human ear is less sensitive at frequency extremes, below 125Hz and above 16Khz. A sound level meter models the ears variable sensitivity to sound at different frequencies. This is achieved by building a filter into the Sound Level Meter with a similar frequency response to that of the ear, an A-weighted filter where the unit is dB(A).

### $L_{eq}$

The sound from noise sources often fluctuates widely during a given period of time. An average value can be measured, the equivalent sound pressure level  $L_{eq}$ . The  $L_{eq}$  is the equivalent sound level which would deliver the same sound energy as the actual fluctuating sound measured in the same time period.

### $L_{10}$

This is the level exceeded for no more than 10% of the time. This parameter is often used as a "not to exceed" criterion for noise.

### $L_{90}$

This is the level exceeded for no more than 90% of the time. This parameter is often used as a descriptor of "background noise" for environmental impact studies.

### $L_{max}$

This is the maximum sound pressure level that has been measured over a period.

### Octave Bands

In order to completely determine the composition of a sound it is necessary to determine the sound level at each frequency individually. Usually, values are stated in octave bands. The audible frequency region is divided into 11 such octave bands whose centre frequencies are defined in accordance with international standards. These centre frequencies are: 16, 31.5, 63, 125, 250, 500, 1000, 2000, 4000, 8000 and 16000 Hertz.

Environmental noise terms are defined in BS7445, *Description and Measurement of Environmental Noise*.

## APPLIED ACOUSTIC TERMINOLOGY

### Addition of noise from several sources

Noise from different sound sources combines to produce a sound level higher than that from any individual source. Two equally intense sound sources operating together produce a sound level which is 3dB higher than a single source and 4 sources produce a 6dB higher sound level.

### Attenuation by distance

Sound which propagates from a point source in free air attenuates by 6dB for each doubling of distance from the noise source. Sound energy from line sources (e.g. stream of cars) drops off by 3dB for each doubling of distance.

### Subjective impression of noise

Hearing perception is highly individualised. Sensitivity to noise also depends on frequency content, time of occurrence, duration of sound and psychological factors such as emotion and expectations. The following table is a guide to explain increases or decreases in sound levels for many scenarios.

Change in sound level (dB)	Change in perceived loudness
1	Imperceptible
3	Just barely perceptible
6	Clearly noticeable
10	About twice as loud

### Transmission path(s)

The transmission path is the path the sound takes from the source to the receiver. Where multiple paths exist in parallel, the reduction in each path should be calculated and summed at the receiving point. Outdoor barriers can block transmission paths, for example traffic noise. The effectiveness of barriers is dependent on factors such as its distance from the noise source and the receiver, its height and construction.

### Ground-borne vibration

In addition to airborne noise levels caused by transportation, construction, and industrial sources there is also the generation of ground-borne vibration to consider. This can lead to structure-borne noise, perceptible vibration, or in rare cases, building damage.

### Sound insulation - Absorption within porous materials

Upon encountering a porous material, sound energy is absorbed. Porous materials which are intended to absorb sound are known as absorbents, and usually absorb 50 to 90% of the energy and are frequency dependent. Some are designed to absorb low frequencies, some for high frequencies and more exotic designs being able to absorb very wide ranges of frequencies. The energy is converted into both mechanical movement and heat within the material; both the stiffness and mass of panels affect the sound insulation performance.

## APPENDIX B

### 29 Bedford Row, London

#### PLANT NOISE EMISSIONS CALCULATIONS

Source: Plant Locations	Frequency, Hz								dB(A)
Receiver: Noise Sensitive Receivers (Regency College)	63	125	250	500	1k	2k	4k	8k	
Receiver 1									
Plant Location 1 - Measured Noise Level (Sound Pressure Level @1m)	64	61	56	54	50	47	40	33	42
Minimum attenuation provided by distance (5m), dB	-14	-14	-14	-14	-14	-14	-14	-14	
Total specific noise level at Noise Sensitive Receiver 1	50	47	42	40	36	33	26	19	
Plant Location 3 - Measured Noise Level (Sound Pressure Level @1m)									
Minimum attenuation due to building envelope, dB	-5	-5	-5	-5	-5	-5	-5	-5	40
Minimum attenuation provided by distance (8m), dB	-18	-18	-18	-18	-18	-18	-18	-18	
Total specific noise level at Noise Sensitive Receiver 1	38	37	36	35	34	35	21	15	
Cumulative specific noise level at Noise Sensitive Receiver 1	50	47	43	41	38	37	27	21	47
BS4142 Acoustic Feature Correction (Impulsivity)	3	3	3	3	3	3	3	3	
Cumulative Rating Level of all Plant Unit Installations at Receiver 1	53	50	46	44	41	40	30	24	
Receiver 2									
Plant Location 1 - Measured Noise Level (Sound Pressure Level @1m)	64	61	56	54	50	47	40	33	42
Minimum attenuation provided by distance (5m), dB	-14	-14	-14	-14	-14	-14	-14	-14	
Total specific noise level at Noise Sensitive Receiver 2	50	47	42	40	36	33	26	19	
Plant Location 3 - Measured Noise Level (Sound Pressure Level @1m)									
Minimum attenuation due to building envelope, dB	-5	-5	-5	-5	-5	-5	-5	-5	40
Minimum attenuation provided by distance (8m), dB	-18	-18	-18	-18	-18	-18	-18	-18	
Total specific noise level at Noise Sensitive Receiver 2	38	37	36	35	34	35	21	15	
Cumulative specific noise level at Noise Sensitive Receiver 2	50	47	43	41	38	37	27	21	47
BS4142 Acoustic Feature Correction (Impulsivity)	3	3	3	3	3	3	3	3	
Cumulative Rating Level of all Plant Unit Installations at Receiver 2	53	50	46	44	41	40	30	24	
Receiver 3									
Plant Location 1 - Measured Noise Level (Sound Pressure Level @1m)	64	61	56	54	50	47	40	33	34
Minimum attenuation provided by distance (12m), dB	-22	-22	-22	-22	-22	-22	-22	-22	
Total specific noise level at Noise Sensitive Receiver 3	42	39	34	32	28	25	18	11	
Plant Location 2 - Measured Noise Level (Sound Pressure Level @1m)									
Minimum attenuation due to building envelope, dB	-5	-5	-5	-5	-5	-5	-5	-5	24
Minimum attenuation provided by distance (15m), dB	-24	-24	-24	-24	-24	-24	-24	-24	
Total sound specific level at Noise Sensitive Receiver 3	26	29	25	23	18	15	7	2	
Plant Location 3 - Measured Noise Level (Sound Pressure Level @1m)									
Minimum attenuation due to building envelope, dB	-5	-5	-5	-5	-5	-5	-5	-5	37
Minimum attenuation provided by distance (11m), dB	-21	-21	-21	-21	-21	-21	-21	-21	
Total specific noise level at Noise Sensitive Receiver 3	35	34	33	32	31	32	18	12	
Cumulative specific noise level at Noise Sensitive Receiver 3	43	41	37	35	33	33	21	15	42
BS4142 Acoustic Feature Correction (Impulsivity)	3	3	3	3	3	3	3	3	
Cumulative Rating Level of all Plant Unit Installations at Receiver 3	46	44	40	38	36	36	24	18	
	Design Criterion						50		



## ANTI-VIBRATION MOUNTING SPECIFICATION REFERENCE DOCUMENT

### 1.0 General

- 1.1 All mountings shall provide the static deflection, under the equipment weight, shown in the schedules. Mounting selection should allow for any eccentric load distribution or torque reaction, so that the design deflection is achieved on all mountings under the equipment, under operating conditions.
- 1.2 It is the supplier's responsibility to ensure that all mountings offered are suitable for the loads, operating and environmental conditions which will prevail. Particular attention should be paid to mountings which will be exposed to atmospheric conditions to prevent corrosion.
- 1.3 All mountings shall be colour coded, or otherwise marked, to indicate their load capacity, to facilitate identification during installation.

Where use of resilient supports allows omission of pipe flexible connections for vibration/noise isolation, it shall be the Mechanical Service Consultant's or Contractor's responsibility to decide whether such devices are required to compensate for misalignment or thermal strain.

### 2.1 Type A Mounting (Caged Spring Type)

- 2.1.1 Each mounting shall consist of cast or fabricated telescopic top and bottom housings enclosing one or more helical steel springs as the principle isolation elements, and shall incorporate a built-in levelling device. The housing should be designed to permit visual inspection of the springs after installation, i.e. the spring must not be totally enclosed.
- 2.1.2 The springs shall have an outside diameter of not less than 75% of the operating height, and be selected to have at least 50% overload capacity before becoming coil-bound.
- 2.1.3 The bottom plate of each mounting shall have bonded to it a rubber/neoprene pad designed to attenuate any high frequency energy transmitted by the springs.
- 2.1.4 Mountings incorporating snubbers or restraining devices shall be designed so that the snubbing, damping or restraining mechanism is capable of being adjusted to have no significant effect during the normal running of the isolated machine.
- 2.1.5 All nuts, bolts or other elements used for adjustment of a mounting shall incorporate locking mechanisms to prevent the isolator going out of adjustment as a result of vibration or accidental or unauthorised tampering.

### 2.2 Type B Mounting (Open Spring Type)

- 2.2.1 Each mounting shall consist of one or more helical steel springs as the principal isolation elements, and shall incorporate a built-in levelling device.
- 2.2.2 The springs shall be fixed or otherwise securely located to cast or fabricated top and bottom plates, shall have an outside diameter of not less than 75% of the operating height, and shall be selected to have at least 50% overload capacity before becoming coil-bound.
- 2.2.3 The bottom plate shall have bonded to it a rubber/ neoprene pad designed to attenuate any high frequency energy transmitted by the springs.

## **2.3 Type C Mounting (Rubber/Neoprene Type)**

Each mounting shall consist of a steel top plate and base plate completely embedded in oil resistant rubber/neoprene. Each mounting shall be capable of being fitted with a levelling device, and should have bolt holes in the base plate and a threaded metal insert in the top plate so that they can be bolted to the floor and equipment where required.

## **3.0 Plant Bases**

### **3.1 Type A Bases (A.V. Rails)**

An A.V. Rail shall comprise a steel beam with two or more height-saving brackets. The steel sections must be sufficiently rigid to prevent undue strain in the equipment and if necessary should be checked by the Structural Engineer.

### **3.2 Type B Bases (Steel Plant Bases)**

Steel plant bases shall comprise an all-welded steel framework of sufficient rigidity to provide adequate support for the equipment, and fitted with isolator height saving brackets. The frame depth shall be approximately 1/10 of the longest dimension of the equipment with a minimum of 150 mm. This form of base may be used as a composite A.V. rail system.

### **3.3 Type C Bases (Concrete Inertia Base: for use with steel springs)**

These shall consist of an all-welded steel pouring frame-work with height saving brackets, and a frame depth of approximately 1/12 of the longest dimension of the equipment, with a minimum of 100 mm. The bottom of the pouring frame should be blanked off, and concrete (2300 kg/m<sup>3</sup>) poured in over steel reinforcing rods positioned 35 mm above the bottom. The inertia base should be sufficiently large to provide support for all parts of the equipment, including any components which over-hang the equipment base, such as suction and discharge elbows on centrifugal pumps.